

## DAIKIN MXS SERIES MULTI-ZONE HEATING & COOLING SYSTEMS

1.5-4 TON, 2-5 ZONE SYSTEMS  
Up to 20.2 SEER / Up to 12.5 HSPF  
Up to 12.7 EER  
VARIABLE-SPEED COMPRESSOR  
RESIDENTIAL AND LIGHT  
COMMERCIAL APPLICATIONS

**Today, the air is perfect.** Perfect temperature. Perfect humidity. Perfectly clean and fresh, like just after a rainstorm. And the only thing more perfect than this outdoor scenario is that it's all happening inside. Because that's where we work. That's where we play, where we sleep, where we truly live.

And that's why at Daikin, we aim to make the air inside as refreshing as the outside. Better comfort. Better control and efficiency. Better quality. So you can create your own unique ecosystem. And everyday is perfect.

**Inside and out.**

## Daikin Multi-Zone Heat Pump

INVERTER, VARIABLE-SPEED COMPRESSOR



### **AIR INTELLIGENCE™ built-inside**

A better understanding of how people inhabit their living spaces has led to products designed to create indoor environments that help use energy resources more effectively. Heat pumps extract or reject heat from the outside air, even in cold weather. They use an electrically powered compressor and are extremely effective at heating and

cooling an apartment or a house. Daikin heat pumps are quiet and discreet, and use state-of-the-art technology to keep your energy bills low. With a Daikin heat pump, a large portion of the energy used to heat or cool your home comes from the outside air, a free and infinitely renewable resource.





## Comfort

We offer a wide range of products, and always provide you with the ideal solution, whether for an apartment, condo or a house. Our units are whisper quiet and, with their specially designed airflow pattern, they create your ideal indoor climate.

Daikin units are designed to include features that let you create your own unique ecosystem. From the wide-angle louver design to the auto-swing and comfortable mode controller settings, effective heating and cooling is ensured throughout the space.

## Smart inverter technology

Integrated with an inverter variable-speed compressor, Daikin systems deliver the capacity required to maintain desired room conditions, typically reducing energy consumption by up to 30% or more (compared to traditional fixed-speed ducted systems). This technology minimizes temperature fluctuations and provides continuous cooling and heating comfort.

## Energy efficiency

Our products are designed to be highly efficient all year round, and their low energy consumption is reflected in low energy bills for you.

## Control\*\*

Our expertise makes life easier for you, allowing you to control your system via a smartphone app or a user-friendly remote control.

## Reliability

Daikin products are renowned for their reliability. And you can rely on service to match, with industry leading warranties.\*



\* Complete warranty details available from your local dealer/contractor or at [www.daikincomfort.com](http://www.daikincomfort.com). To receive the 12-Year Parts Limited Warranty, online registration must be completed within 60 days of installation. Online registration is not required in California or Quebec.

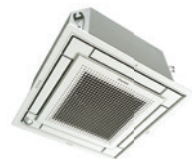
\*\* Comfort Control app not compatible with FDMQ or VISTA indoor units.

## Compatible indoor units:



### EMURA™ – Designed to perfectly balance technological capability and the beauty of aerodynamics

- » Iconic award winning design and engineering excellence
- » Elegant finish in pure matte white or modern silver
- » Two-area intelligent eye sensor controls comfort and allows for energy savings during unoccupied periods
- » Titanium apatite photo-catalytic air purification



### VISTA™ – Unique design that integrates seamlessly into the ceiling

- » Iconic award winning design and engineering excellence
- » Elegant finish in white or silver / white combination
- » DC fan motor and two optional intelligence sensors for energy efficiency



### FTXS – Discreet wall mounted unit providing high efficiency and comfort

- » Discreet, stylish front panel blends easily with the wall, and matches all interior decors
- » Dry program allows humidity levels to be reduced without variations in room temperature
- » Intelligent Eye function reduces heating or cooling operation during unoccupied periods



### FVXS – Floor mounted unit for optimal heating comfort thanks to dual airflow

- » Its low height enables the unit to fit perfectly beneath a window
- » Can be installed against a wall or recessed
- » Vertical auto swing moves the louver up and down for efficient air and temperature distribution



### FDMQ – Ducted Concealed Indoor Unit capable of up to .6 esp

- » Higher external static pressure capabilities allow for longer duct runs and easily implementing high MERV filters
- » Drain pan inspection port makes it easy to observe drain pan conditions
- » Rear or bottom return air configurations for installation flexibility



### FDXS/CDXS – Slim Ducted Concealed Ceiling Unit capable of up to 0.18 esp

- » External static pressure facilitates unit's use with minimal length of duct runs
- » Discretely concealed in the ceiling: only the suction and discharge grills are visible
- » DC fan motor for low energy consumption

## Knowledge is power

In general, system performance is measured by a higher Seasonal Energy Efficiency Ratio (SEER) and Energy Efficiency Ratio (EER). Higher ratings mean lower operating costs. Similarly, a higher rated Heating Seasonal Performance Factor (HSPF) and Coefficient of Performance (COP) means a more efficient air-source heat pump.

## Why is it important?

The COP of a heat pump is the ratio of:  $COP = \frac{\text{energy out}}{\text{energy in}}$

When the COP is >1, the result is a system providing more heating energy than energy consumed. As the COP increases, the higher the efficiency — resulting in lower utility costs.

Up to

**20.2**  
**SEER**

**12.7**  
**EER**

**12.5**  
**HSPF**

**4.6**  
**COP**

(Coefficient of Performance)

Multi-Zone Heat Pump  
Efficiency ratings

COP



**MXS**

**Up to 4.6**  
(Multi-Zone)



## Individual comfort and control

Daikin systems come standard with an infrared remote controller allowing you to access all functions at the click of a button.

## From anywhere in the world. Or your living room.\*\*

It can happen to anyone. You forgot to change the temperature of your heat pump system or air conditioner before leaving the house, or you will be delayed returning home and wish to avoid needlessly heating or cooling your home. What in the past would have resulted in wasted energy is no longer a problem. With the new Daikin Comfort Control App, you are always in control. You can use your tablet or smart-phone to access your Daikin system via the internet.

\* Comfort Control app not compatible with FDMQ or VISTA indoor units.

+ Requires purchase and installation of adapter (BRP072A43)



# MXS Series Multi-Zone Heating and Cooling Systems

## Multi-Zone systems provide high efficiency and comfort

Daikin's Multi-Zone Systems are ideal for multi-room applications desiring individual room comfort in a space-saving design. With the ability to connect two, three, four, or five indoor units to a single outdoor unit, over 1,000 combinations are possible with the choice of wall mount units, ducted units, ceiling cassette units, floor mounts or a combination. Suitable for both new build and renovation projects, Daikin Multi-Split Systems are the smart, reliable solution for your home.

## Premium comfort features:

- » Energy Efficient – Up to 20.2 SEER, 12.5 HSPF, up to 12.7 EER – Variable-Speed Inverter Compressor
- » Cooling Range 14° - 115°F
- » Heating Range 5° - 60°F

## Ideal solution for:

- » Entire homes or floors of homes
- » Multiple zones
- » New construction
- » Primary living areas (master bedrooms and living rooms)
- » Basements

## Outdoor unit features:



**Anti-Corrosion Treatment on Heat Exchanger**



**Quick Warming Function** – Prevents the compressor from pumping liquid refrigerant in low-ambient conditions.



**Automatic Defrosting** – Sensor performs automatic defrosting of the outdoor heat exchanger if necessary, ensuring optimum heating performance.



**Outdoor Unit Quiet Operation** – Outdoor unit sound levels can be reduced by 3dB for times when quieter operation is needed.

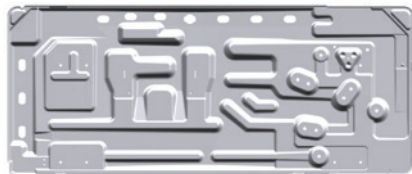


**Intelligent Defrost Mode\*** – The outdoor unit will enable this mode to help prevent frost/ice from building up in cold climate conditions. It will also help with longer heating operation time for additional comfort for occupants (compared to HVAC systems without this function).

\*Available on 5MXS only

## New drain pan

- » Newly designed drain pan on 5MXS outdoor unit to help prevent condensate from freezing and causing damage to the fan and coil.



Outdoor Units	2-Port (2MXS18NMVJU)		3-Port (3MXS24RMVJU)		4-Port (4MXS36RMVJU)		5-Port (5MXS48TVJU)	
	Efficiency	AHRI#	Efficiency	AHRI#	Efficiency	AHRI#	Efficiency	AHRI#
Non-Ducted	18.9 SEER / 12.5 EER / 10.7 HSPF	8103542	18 SEER / 12.7 EER / 12.5 HSPF	201851575	17.7 SEER / 9.2 EER / 12.2 HSPF	201851579	20.2 SEER / 10.5 EER / 11.1 HSPF	201851575
Ducted	14 SEER / 9.5 EER / 8.2 HSPF	8103477	14 SEER / 9.7 EER / 8.2 HSPF	201851576	14 SEER / 7.9 EER / 8.2 HSPF	201851580	15.3 SEER / 8.6 EER / 9.85 HSPF	201851575
Mixed	16.45 SEER / 11 EER / 9.45 HSPF	8104492	15.95 SEER / 11.2 EER / 10.35 HSPF	201851581	15.85 SEER / 8.55 EER / 10.2 HSPF	201851583	17.75 SEER / 9.55 EER / 8.5 HSPF	201851575

Indoor Units / Dimensions (HxWxD)	Unit Class					
	07	09	12	15	18	24
EMURA™ (Wall Mount)		FTXR09TVJUW/S	FTXR12TVJUW/S		FTXR18TVJUW/S	
		11 <sup>15</sup> / <sub>16</sub> x 39 <sup>5</sup> / <sub>16</sub> x 8 <sup>3</sup> / <sub>8</sub>			11 <sup>15</sup> / <sub>16</sub> x 39 <sup>5</sup> / <sub>16</sub> x 8 <sup>3</sup> / <sub>8</sub>	
FFQ09Q2VJU		FFQ12Q2VJU	FFQ15Q2VJU	FFQ18Q2VJU		
10 ¼ x 22 <sup>5</sup> / <sub>8</sub> x 22 <sup>5</sup> / <sub>8</sub>						
FTXS Wall Mount	CTXS07LVJU	FTXS09LVJU	FTXS12LVJU	FTXS15LVJU	FTXS18LVJU	FTXS24LVJU
	11 ⅝ x 31 ½ x 8 7/16			13 ⅜ x 41 ⅝ x 9 ¾		
FVXS Floor/Low Wall Mount		FVXS09NVJU	FVXS12NVJU	FVXS15NVJU	FVXS18NVJU	
		23 ⅝ x 27 ⅞ x 8 ¼				
FDMQ		FDMQ09RVJU	FDMQ12RVJU	FDMQ15RVJU	FDMQ18RVJU	FDMQ24RVJU
Ducted Concealed		9 ⅝ x 27 ⅞ x 31 ½			9 ⅝ x 39 ⅜ x 31 ½	
FDXS/CDXS Slim Duct	CDXS07LVJU	FDXS09LVJU	FDXS12LVJU	CDXS15LVJU	CDXS18LVJU	CDXS24LVJU
	7 7/8 x 27 ⅞ x 24 7/16			7 7/8 x 35 7/16 x 24 7/16		3 7/8 x 43 ⅝ x 24 7/16



Proper sizing and installation of equipment is critical to achieve optimal performance. Split system air conditioners and heat pumps must be matched with appropriate coil components to meet **ENERGY STAR**® criteria. Ask your contractor for details or visit [www.energystar.gov](http://www.energystar.gov).

## Why choose Daikin?

Daikin is the world leader when it comes to heating and cooling. Thanks to our constant innovation in comfort, energy efficiency, control and reliability, we define the benchmarks for quality within the industry.

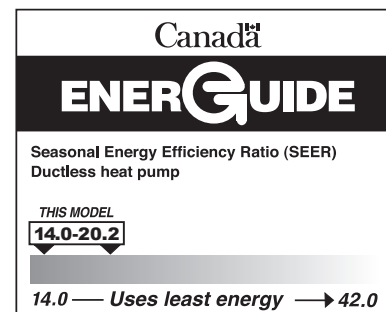
## Expert reviews from our most important critics.

Daikin offers a wide selection of choices for energy-efficient indoor comfort. As a worldwide leader in heating and cooling technology, Daikin is also a highly-rated brand. See for yourself at [www.daikincomfort.com/reviews](http://www.daikincomfort.com/reviews).

### ADDITIONAL INFORMATION

Before purchasing this appliance, read important information about its estimated annual energy consumption, yearly operating cost, or energy efficiency rating that is available from your retailer.

Daikin and its design are trademarks owned by Daikin.



Our continuing commitment to quality products may mean a change in specifications without notice.  
© 2019 **DAIKIN NORTH AMERICA LLC** · Houston, Texas · USA · [www.daikincomfort.com](http://www.daikincomfort.com) or [www.daikinac.com](http://www.daikinac.com)

CB-MXS 3-19