



Air Conditioning & Heating

GMES92

HEATING INPUT: 40,000–120,000 BTU/H

**SINGLE-STAGE, MULTI-SPEED
GAS FURNACE
UP TO 92% AFUE**



Contents

Nomenclature.....	2
Product Specifications.....	3
Dimensions	4
Airflow Specifications.....	5
Wiring Diagram.....	10
Accessories	11

Standard Features

- Heavy-duty aluminized-steel tubular heat exchanger
- Stainless-steel secondary heat exchanger
- Single-stage gas valve
- Durable Silicon Nitride igniter
- Multi-speed ECM blower motor
- Quiet single-speed induced draft blower
- Self-diagnostic control board
- All models comply with California 40 ng/J Low NOx emissions standard
- For installation in California's South Coast Air Quality Management District (SCAQMD) only: This furnace does not meet the SCAQMD Rule 1111 14 ng/J NOx emission limit, and thus is subject to a mitigation fee of up to \$450. This furnace is not eligible for the SCAQMD Clean Air Furnace Rebate Program: www.CleanAirFurnaceRebate.com.
- AHRI Certified; ETL Listed

Cabinet Features

- Designed for multi-position installation — GMES92: upflow, horizontal left or right
- Certified for direct vent (2-pipe) or non-direct vent (1-pipe)
- Easy-to-install top venting with optional side venting — GMES92/upflow models only
- Convenient left or right connection for gas and electrical service
- Cabinet air leakage ($Q_{Leak} \leq 2\%$)
- Heavy-gauge steel cabinet with durable finish
- Foil-faced insulated heat exchanger cabinet
- Airtight solid bottom or side return with easy-cut tabs for effortless removal in bottom air-inlet applications

LIFETIME
HEAT EXCHANGER
LIMITED WARRANTY*

10 PARTS
YEAR LIMITED
WARRANTY*



COMPANY WITH
QUALITY SYSTEM
CERTIFIED BY DNV GL
■ ISO 9001 ■

COMPANY WITH
ENVIRONMENTAL SYSTEM
CERTIFIED BY DNV GL
■ ISO 14001 ■



* Complete warranty details available from your local dealer or at www.goodmanmfg.com. To receive the Lifetime Heat Exchanger Limited Warranty (good for as long as you own your home), and 10-Year Parts Limited Warranty, online registration must be completed within 60 days of installation. Online registration is not required in California or Québec.

	G	M	E	S	92	060	3	B	N	**	
	1	2	3	4	5,6	7,8,9	10	11	12	13,14	
BRAND											ENGINEERING
G- Goodman® Brand											Major / Minor Revisions * Not used for inventory control.
CONFIGURATION											NOX
M- Upflow/Horizontal C- Downflow/Horizontal											N- Low NOx
MOTOR											CABINET WIDTH
V- Variable Speed ECM / ComfortNet E- Multi-Speed ECM S- Single Speed											A- 14" B- 17½" C- 21" D- 24½"
GAS VALVE											MAXIMUM CFM
M- Modulating C- Two- Stage S- Single Stage											2- 800 CFM 3- 1200 CFM 4- 1600 CFM 5- 2000 CFM
AFUE											MBTU/H
97- 97% AFUE 92- 92% AFUE											040- 40,000 BTU/h 060- 60,000 BTU/h 120- 120,000 BTU/h

	GMES92 0403AN	GMES92 0603BN	GMES92 0803BN	GMES92 0804CN	GMES92 0805CN	GMES92 1004CN	GMES92 1005CN	GMES92 1205DN
HEATING DATA								
High Fire Input ¹	40,000	60,000	80,000	80,000	80,000	100,000	100,000	120,000
High Fire Output ¹	36,840	55,260	73,680	73,680	73,680	92,100	92,100	110,520
AFUE ²	92	92	92	92	92	92	92	92
Temperature Rise Range (°F)	30-60	35-65	35-65	35-65	25-55	35-65	35-65	35-65
Vent Diameter ³	2" - 3"	2" - 3"	2" - 3"	2" - 3"	2" - 3"	2" - 3"	2" - 3"	3"
NO. OF BURNERS	2	3	4	4	4	5	5	6
CIRCULATOR BLOWER								
Available AC @ 0.5" ESP	1.5- 3	1.5- 3	1.5- 3	43,528	3- 5	3- 5	3- 5	3- 5
Size (D x W)	10" x 6"	10" x 8"	10" x 8"	10" x 10"	11" x 10"	10" x 10"	11" x 10"	11" x 11"
Horsepower @ 1075 RPM	1/2	1/2	1/2	3/4	1	3/4	1	1
Speed	5	5	5	5	5	5	5	5
FILTER SIZE (IN²) (QTY)	(1) 16 x 25 (side) or (1) 14 X 25 (bottom)	(1) 16 x 25 (side or bottom)	(1) 16 x 25 (side or bottom)	(1) 16 x 25 (side or bottom)	(1) 20 x 25 (bottom) or (2) 16 x 25 (side)	(1) 16 x 25 (side or bottom)	(1) 20 x 25 (bottom) or (2) 16 x 25 (side)	(1) 20 x 25 (bottom) or (2) 16 x 25 (side)
ELECTRICAL DATA								
Min. Circuit Ampacity ⁴	10.3	10.3	10.3	14.1	16.9	14.1	16.9	16.9
Max. Overcurrent Device (amps) ⁵	15	15	15	15	20	15	20	20
SHIPPING WEIGHT (LBS)	106	114	117	139	140	141	141	154

¹ Natural Gas BTU/h

² DOE AFUE based upon Isolated Combustion System (ICS)

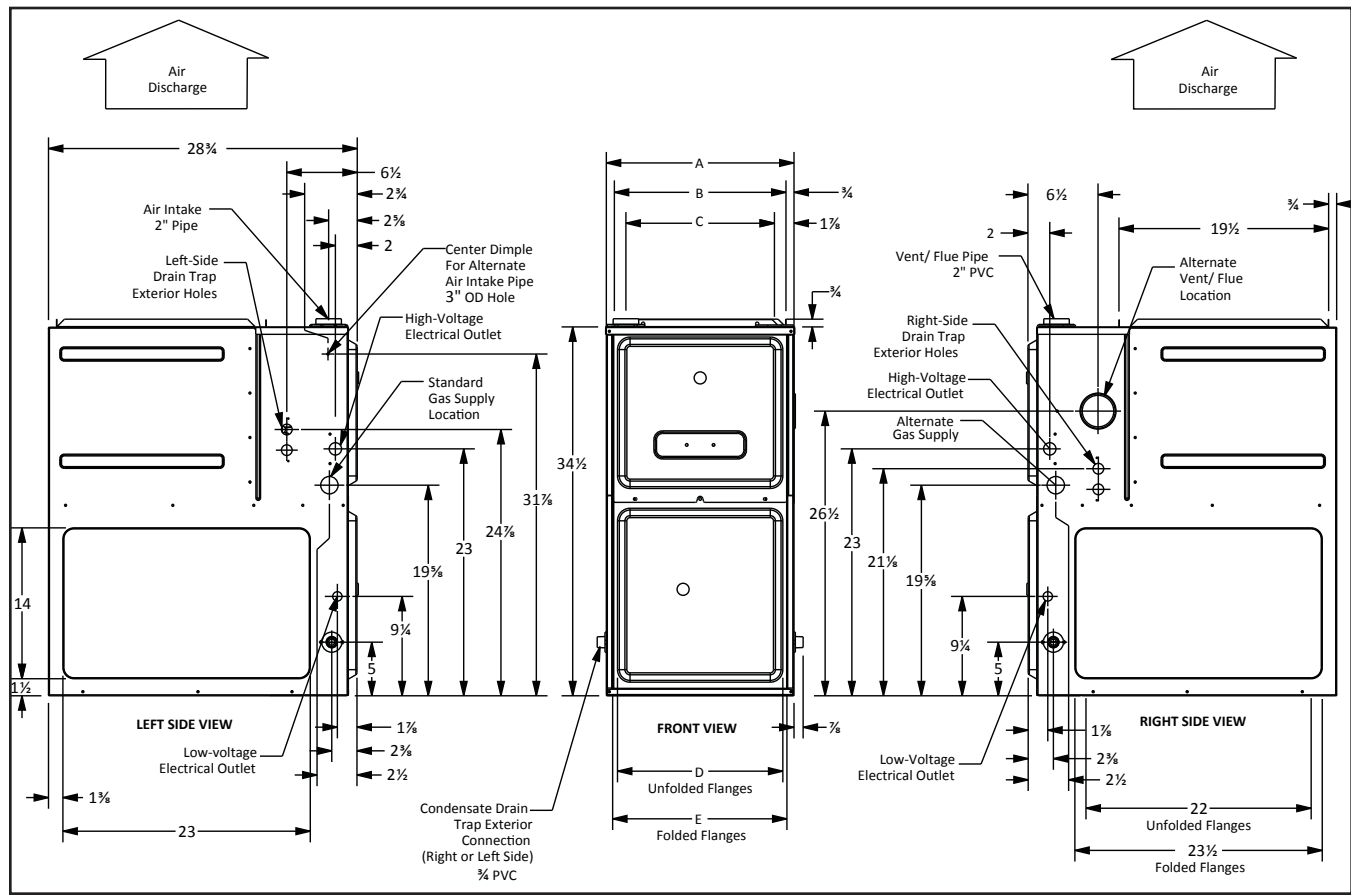
³ Installer must supply one or two PVC pipes: one for combustion air (optional) and one for the flue outlet (required). Vent pipe must be either 2" or 3" in diameter, depending upon furnace input, number of elbows, length of run and installation (1 or 2 pipes). The optional Combustion Air Pipe is dependent on installation/code requirements and must be 2" or 3" diameter PVC.

⁴ Minimum Circuit Ampacity = (1.25 x Circulator Blower Amps) + ID Blower amps. Wire size should be determined in accordance with National Electrical Codes. Extensive wire runs will require larger wire sizes.

⁵ Maximum Overcurrent Protection Device refers to maximum recommended fuse or circuit breaker size. May use fuses or HACR-type circuit breakers of the same size as noted.

NOTES

- All furnaces are manufactured for use on 115 VAC, 60 Hz, single-phase electrical supply.
- Gas Service Connection ½" FPT
- Important: Size fuses and wires properly and make electrical connections in accordance with the National Electrical Code and/or all existing local codes.
- For bottom return: Failure to unfold flanges may reduce airflow by up to 18%. This could result in performance and noise issues.
- For servicing or cleaning, a 24" front clearance is required. Unit connections (electrical, flue and drain) may necessitate greater clearances than the minimum clearances listed above. In all cases, accessibility clearance must take precedence over clearances from the enclosure where accessibility clearances are greater.



MODEL	HEATING CAPACITY ¹		AFUE %	TONS A/C ²	DIMENSIONS			SHIP WEIGHT (LBS)
	INPUT	OUTPUT			W"	D"	H"	
GMES920403A*	40,000	36,840	92	3	14"	28⅞	34½	106
GMES920603B*	60,000	55,260	92	3	17½	28⅞	34½	114
GMES920803B*	80,000	73,680	92	3	17½	28⅞	34½	117
GMES920804C*	80,000	73,680	92	4	21"	28⅞	34½	139
GMES920805C*	80,000	73,680	92	5	21"	28⅞	34½	140
GMES921004C*	100,000	92,100	92	4	21"	28⅞	34½	141
GMES921005C*	100,000	92,100	92	5	21"	28⅞	34½	142
GMES921205D*	120,000	110,520	92	5	24½	28⅞	34½	154

MINIMUM CLEARANCES TO COMBUSTIBLE MATERIALS

POSITION	SIDES	REAR	FRONT	BOTTOM	FLUE	TOP
Upflow	0"	0"	3"	C	0"	1"
Horizontal	6"	0"	3"	C	0"	6"

C = If placed on combustible floor, the floor **MUST** be wood **ONLY**.

CFM & TEMPERATURE RISE VS. EXTERNAL STATIC PRESSURE

MODEL	DIP SWITCHES S2-1, S2-2	EXTERNAL STATIC PRESSURE, (INCHES WATER COLUMN)												
		0.1		0.2		0.3		0.4		0.5		0.6	0.7	0.8
		CFM	RISE	CFM	RISE	CFM	RISE	CFM	RISE	CFM	RISE	CFM	CFM	CFM
GMES92 0403A	OFF OFF	628	54	582	59	530	N/A	478	N/A	428	N/A	370	319	282
	ON OFF*	806	42	762	45	719	47	676	50	633	54	594	551	506
	ON ON**	927	37	883	39	844	40	808	42	793	43	756	719	680
	OFF ON**	1111	31	1071	32	1033	33	1002	34	971	35	936	905	871
GMES92 0603B	OFF OFF	725	N/A	662	N/A	599	N/A	519	N/A	479	N/A	418	348	285
	ON OFF*	1068	48	1018	50	971	53	926	55	880	58	834	789	767
	ON ON	940	54	891	57	836	61	787	65	762	N/A	714	666	619
	OFF ON**	1139	N/A	1089	N/A	1040	N/A	998	N/A	958	N/A	911	870	829
GMES92 0803B	OFF OFF	737	92	669	102	609	112	550	124	490	139	425	361	303
	ON OFF*	1223	56	1171	58	1125	61	1081	63	1036	66	987	945	905
	ON ON	983	69	922	74	870	78	818	83	793	86	747	696	645
	OFF ON	1160	59	1112	61	1066	64	1020	67	977	70	933	889	849
GMES92 0804C	OFF OFF	795	N/A	721	N/A	646	N/A	580	N/A	507	N/A	399	326	275
	ON OFF*	1417	48	1378	49	1324	51	1284	53	1238	55	1191	1146	1092
	ON ON**	1587	N/A	1541	N/A	1496	N/A	1450	N/A	1411	N/A	1383	1339	1298
	OFF ON**	1794	N/A	1733	N/A	1694	N/A	1661	N/A	1623	N/A	1591	1544	1508
GMES92 0805C	OFF OFF	761	N/A	685	N/A	608	N/A	540	N/A	471	N/A	369	302	262
	ON OFF*	1439	47	1395	49	1364	50	1316	52	1270	54	1227	1181	1135
	ON ON**	1596	N/A	1552	N/A	1508	N/A	1467	N/A	1425	N/A	1405	1354	1314
	OFF ON**	1800	N/A	1757	N/A	1716	N/A	1680	N/A	1644	N/A	1605	1570	1528
GMES92 1004C	OFF OFF	814	N/A	741	N/A	661	N/A	592	N/A	523	N/A	451	377	306
	ON OFF*	1596	53	1539	55	1485	57	1443	59	1401	61	1372	1325	1280
	ON ON	1434	59	1369	62	1317	65	1273	N/A	1228	N/A	1178	1129	1081
	OFF ON**	1796	N/A	1744	N/A	1691	N/A	1648	N/A	1606	N/A	1568	1533	1493
GMES92 1005C	OFF OFF	804	N/A	750	N/A	671	N/A	598	N/A	539	N/A	471	390	322
	ON OFF*	1624	52	1560	55	1508	56	1465	58	1422	60	1389	1338	1295
	ON ON	1440	59	1390	61	1335	64	1288	N/A	1236	N/A	1186	1137	1090
	OFF ON**	1812	N/A	1755	N/A	1708	N/A	1662	N/A	1623	N/A	1585	1548	1507
GMES92 1205D	OFF OFF	1250	N/A	1003	N/A	868	N/A	788	N/A	669	N/A	572	488	406
	ON OFF*	2110	48	2058	50	2008	51	1957	52	1906	54	1852	1800	1750
	ON ON	1536	N/A	1462	N/A	1408	N/A	1335	N/A	1258	N/A	1185	1109	1026
	OFF ON	1884	54	1821	56	1757	58	1698	60	1628	63	1550	1492	1422

¹ at 0.5" ESP**Notes:**

- CFM in chart is without filter(s). Filters do not ship with this furnace, but must be provided by the installer. If the furnace requires two return filters, this chart assumes both filters are installed.
- All furnaces ship as high-speed cooling and medium-speed heating. Installer must adjust blower cooling and heating speed as needed.
- For most jobs, about 400 CFM per ton when cooling is desirable.
- INSTALLATION IS TO BE ADJUSTED TO OBTAIN TEMPERATURE RISE WITHIN THE RANGE SPECIFIED ON THE RATING PLATE.
- This chart is for information only. For satisfactory operation, external static pressure must not exceed value shown on the rating plate.
- The dashed (---) areas indicate a temperature rise not recommended for this model.
- At higher altitudes, a properly derated unit will have approximately the same temperature rise at a particular CFM, while ESP at the CFM will be lower.

MINIMUM FILTER SIZES

	GMES92 0403ANA	GMES92 0603BNA	GMES92 0803BNA	GMES92 0804CNA	GMES92 0805CNA	GMES92 1004CNA	GMES92 1005CNA	GMES92 1205DNA
Filter Size (in ²) (Qty)	(1) 16 x 25 (side) or (1) 14 x 25 (bottom)	(1) 16 x 25 (side or bottom)			(1) 20 x 25 (bottom) or (2) 16 x 25 (side)	(1) 16 x 25 (side or bottom)	(1) 20 x 25 (bottom) or (2) 16 x 25 (side)	

Note: Other size filters of equal or greater dimensions may be used. Filters may also be centrally located.

CFM & TEMPERATURE RISE VS. EXTERNAL STATIC PRESSURE

MODEL	DIP SWITCHES S2-3, S2-4	EXTERNAL STATIC PRESSURE, (INCHES WATER COLUMN)									
		0.1	0.2	0.3	0.4	0.5	0.6	0.7	0.8	0.9	1
		CFM	CFM	CFM	CFM	CFM	CFM	CFM	CFM	CFM	CFM
GMES92 0403A	OFF OFF*	628	582	530	478	428	370	319	282	239	201
	ON OFF	806	762	719	676	633	594	551	506	463	418
	OFF ON	1111	1071	1033	1002	971	936	905	871	839	807
	ON ON	1359	1322	1290	1258	1229	1203	1176	1148	1122	1095
GMES92 0603B	OFF OFF*	725	662	599	519	479	418	348	285	239	207
	ON OFF	1068	1018	971	926	880	834	789	767	725	679
	OFF ON	1139	1089	1040	998	958	911	870	829	806	771
	ON ON	1378	1337	1301	1264	1223	1188	1150	1113	1073	971
GMES92 0803B	OFF OFF*	737	669	609	550	490	425	361	303	251	208
	ON OFF	1223	1171	1125	1081	1036	987	945	905	859	838
	OFF ON	1160	1112	1066	1020	977	933	889	849	824	780
	ON ON	1431	1394	1358	1322	1281	1241	1204	1163	1131	1098
GMES92 0804C	OFF OFF*	795	721	646	580	507	399	326	275	235	207
	ON OFF	1417	1378	1324	1284	1238	1191	1146	1092	1055	1010
	OFF ON	1794	1733	1694	1661	1623	1591	1544	1508	1469	1426
	ON ON	1819	1771	1727	1689	1653	1615	1574	1538	1497	1465
GMES92 0805C	OFF OFF*	761	685	608	540	471	369	302	262	224	187
	ON OFF	1439	1395	1364	1316	1270	1227	1181	1135	1093	1051
	OFF ON	1800	1757	1716	1680	1644	1605	1570	1528	1488	1450
	ON ON	2186	2148	2113	2082	2016	2005	1981	1952	1936	1903
GMES92 1004C	OFF OFF*	814	741	661	592	523	451	377	306	272	215
	ON OFF	1596	1539	1485	1443	1401	1372	1325	1280	1241	1192
	OFF ON	1796	1744	1691	1648	1606	1568	1533	1493	1445	1409
	ON ON	1833	1772	1724	1677	1636	1601	1563	1521	1484	1441
GMES92 1005C	OFF OFF*	804	750	671	598	539	471	390	322	276	221
	ON OFF	1624	1560	1508	1465	1422	1389	1338	1295	1253	1211
	OFF ON	1812	1755	1708	1662	1623	1585	1548	1507	1466	1425
	ON ON	2223	2176	2127	2084	2046	2014	1993	1977	1948	1913
GMES92 1205D	OFF OFF*	1250	1003	868	788	669	572	488	406	330	236
	ON OFF	2110	2058	2008	1957	1906	1852	1800	1750	1697	1646
	OFF ON	1884	1821	1757	1698	1628	1550	1492	1422	1375	1305
	ON ON	2233	2177	2129	2085	2036	1981	1928	1881	1833	1783

¹ at 0.5" ESP**Notes:**

- CFM in chart is without filter(s). Filters do not ship with this furnace, but must be provided by the installer. If the furnace requires two return filters, this chart assumes both filters are installed.
- All furnaces ship as high-speed cooling and medium-speed heating. Installer must adjust blower cooling and heating speed as needed.

CFM & TEMPERATURE RISE VS. EXTERNAL STATIC PRESSURE

MODEL	DIP SWITCHES S1-1, S1-2, S1-3	EXTERNAL STATIC PRESSURE, (INCHES WATER COLUMN)									
		0.1	0.2	0.3	0.4	0.5	0.6	0.7	0.8	0.9	1
		CFM	CFM	CFM	CFM	CFM	CFM	CFM	CFM	CFM	CFM
GMES92 0403A	OFF OFF OFF	628	582	530	478	428	370	319	282	239	201
	OFF ON ON	628	582	530	478	428	370	319	282	239	201
	ON OFF ON	628	582	530	478	428	370	319	282	239	201
	ON ON ON	628	582	530	478	428	370	319	282	239	201
	ON OFF OFF	806	762	719	676	633	594	551	506	463	418
	ON ON OFF	927	883	844	808	793	756	719	680	646	605
	OFF ON OFF	1111	1071	1033	1002	971	936	905	871	839	807
	OFF OFF ON*	1359	1322	1290	1258	1229	1203	1176	1148	1122	1095
GMES92 0603B	OFF OFF OFF	725	662	599	519	479	418	348	285	239	207
	OFF ON ON	725	662	599	519	479	418	348	285	239	207
	ON OFF ON	725	662	599	519	479	418	348	285	239	207
	ON ON ON	725	662	599	519	479	418	348	285	239	207
	ON OFF OFF	1068	1018	971	926	880	834	789	767	725	679
	ON ON OFF	940	891	836	787	762	714	666	619	570	520
	OFF ON OFF	1139	1089	1040	998	958	911	870	829	806	771
	OFF OFF ON*	1378	1337	1301	1264	1223	1188	1150	1113	1073	971
GMES92 0803B	OFF OFF OFF	737	669	609	550	490	425	361	303	251	208
	OFF ON ON	737	669	609	550	490	425	361	303	251	208
	ON OFF ON	737	669	609	550	490	425	361	303	251	208
	ON ON ON	737	669	609	550	490	425	361	303	251	208
	ON OFF OFF	1223	1171	1125	1081	1036	987	945	905	859	838
	ON ON OFF	983	922	870	818	793	747	696	645	598	546
	OFF ON OFF	1160	1112	1066	1020	977	933	889	849	824	780
	OFF OFF ON*	1431	1394	1358	1322	1281	1241	1204	1163	1131	1098
GMES92 0804C	OFF OFF OFF	795	721	646	580	507	399	326	275	235	207
	OFF ON ON	795	721	646	580	507	399	326	275	235	207
	ON OFF ON	795	721	646	580	507	399	326	275	235	207
	ON ON ON	795	721	646	580	507	399	326	275	235	207
	ON OFF OFF	1417	1378	1324	1284	1238	1191	1146	1092	1055	1010
	ON ON OFF	1587	1541	1496	1450	1411	1383	1339	1298	1261	1215
	OFF ON OFF	1794	1733	1694	1661	1623	1591	1544	1508	1469	1426
	OFF OFF ON*	1819	1771	1727	1689	1653	1615	1574	1538	1497	1465
GMES92 0805C	OFF OFF OFF	761	685	608	540	471	369	302	262	224	187
	OFF ON ON	761	685	608	540	471	369	302	262	224	187
	ON OFF ON	761	685	608	540	471	369	302	262	224	187
	ON ON ON	761	685	608	540	471	369	302	262	224	187
	ON OFF OFF	1439	1395	1364	1316	1270	1227	1181	1135	1093	1051
	ON ON OFF	1596	1552	1508	1467	1425	1405	1354	1314	1272	1237
	OFF ON OFF	1800	1757	1716	1680	1644	1605	1570	1528	1488	1450
	OFF OFF ON*	2186	2148	2113	2082	2016	2005	1981	1952	1936	1903

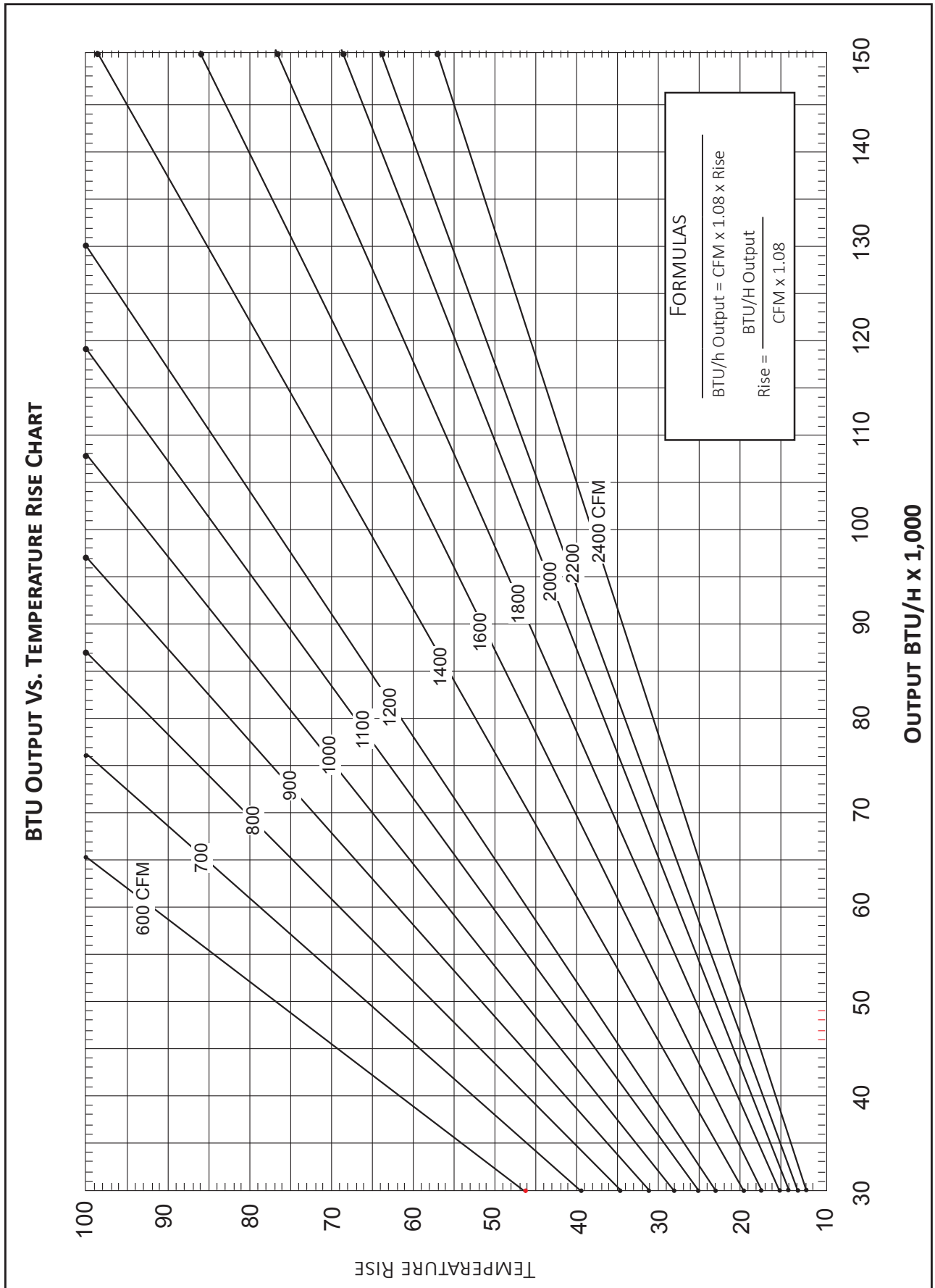
CFM & TEMPERATURE RISE VS. EXTERNAL STATIC PRESSURE

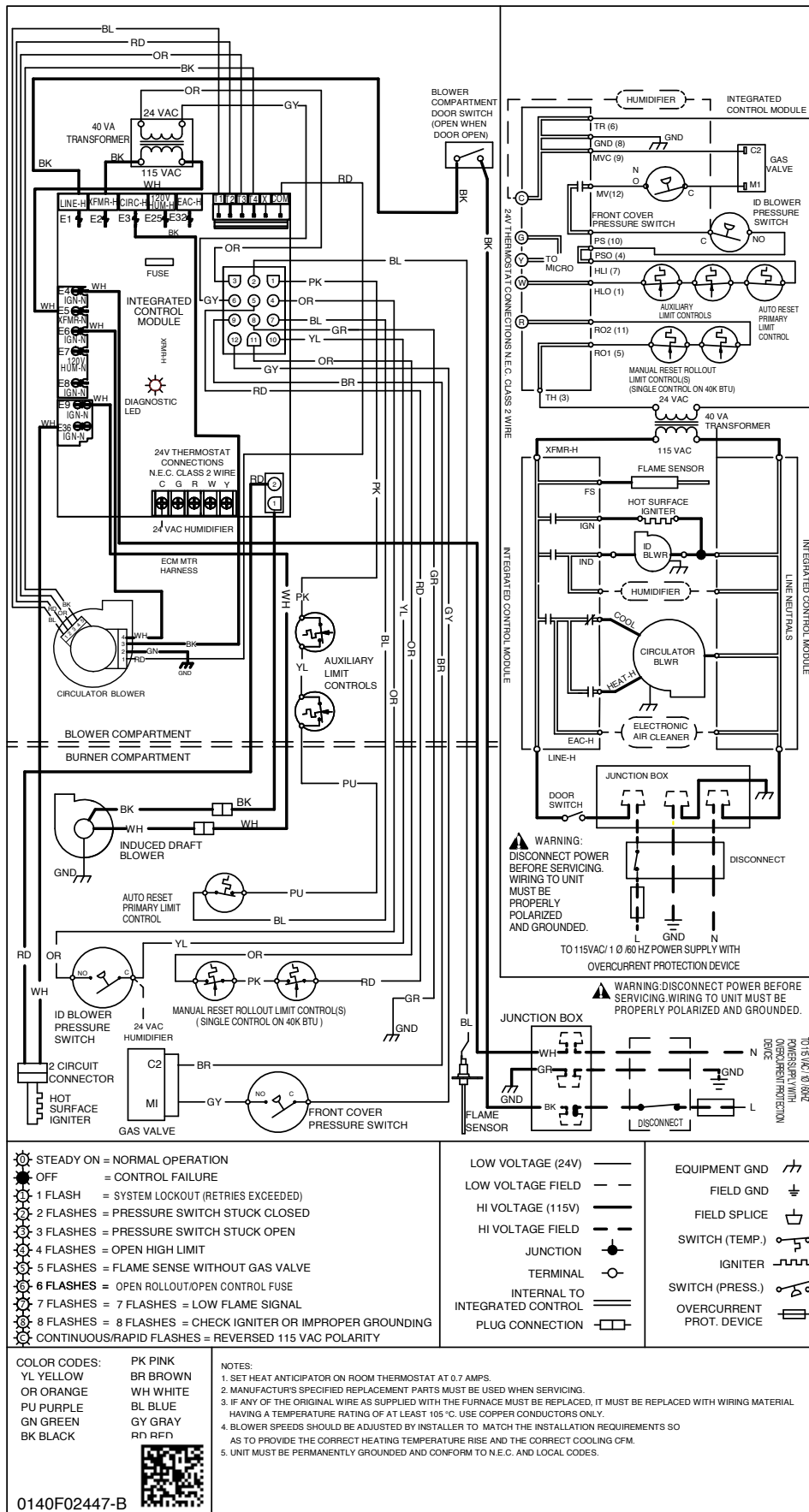
MODEL	DIP SWITCHES S1-1, S1-2, S1-3	EXTERNAL STATIC PRESSURE, (INCHES WATER COLUMN)									
		0.1	0.2	0.3	0.4	0.5	0.6	0.7	0.8	0.9	1
		CFM	CFM	CFM	CFM	CFM	CFM	CFM	CFM	CFM	CFM
GMES92 1004C	OFF OFF OFF	814	741	661	592	523	451	377	306	272	215
	OFF ON ON	814	741	661	592	523	451	377	306	272	215
	ON OFF ON	814	741	661	592	523	451	377	306	272	215
	ON ON ON	814	741	661	592	523	451	377	306	272	215
	ON OFF OFF	1596	1539	1485	1443	1401	1372	1325	1280	1241	1192
	ON ON OFF	1434	1369	1317	1273	1228	1178	1129	1081	1030	983
	OFF ON OFF	1796	1744	1691	1648	1606	1568	1533	1493	1445	1409
	OFF OFF ON*	1833	1772	1724	1677	1636	1601	1563	1521	1484	1441
GMES92 1005C	OFF OFF OFF	804	750	671	598	539	471	390	322	276	221
	OFF ON ON	804	750	671	598	539	471	390	322	276	221
	ON OFF ON	804	750	671	598	539	471	390	322	276	221
	ON ON ON	804	750	671	598	539	471	390	322	276	221
	ON OFF OFF	1624	1560	1508	1465	1422	1389	1338	1295	1253	1211
	ON ON OFF	1440	1390	1335	1288	1236	1186	1137	1090	1042	999
	OFF ON OFF	1812	1755	1708	1662	1623	1585	1548	1507	1466	1425
	OFF OFF ON*	2223	2176	2127	2084	2046	2014	1993	1977	1948	1913
GMES92 1205D	OFF OFF OFF	1250	1003	868	788	669	572	488	406	330	236
	OFF ON ON	1250	1003	868	788	669	572	488	406	330	236
	ON OFF ON	1250	1003	868	788	669	572	488	406	330	236
	ON ON ON	1250	1003	868	788	669	572	488	406	330	236
	ON OFF OFF	2110	2058	2008	1957	1906	1852	1800	1750	1697	1646
	ON ON OFF	1536	1462	1408	1335	1258	1185	1109	1026	941	853
	OFF ON OFF	1884	1821	1757	1698	1628	1550	1492	1422	1375	1305
	OFF OFF ON*	2233	2177	2129	2085	2036	1981	1928	1881	1833	1783

¹ at 0.5" ESP

Notes:

- CFM in chart is without filter(s). Filters do not ship with this furnace, but must be provided by the installer. If the furnace requires two return filters, this chart assumes both filters are installed.
- All furnaces ship as high-speed cooling and medium-speed heating. Installer must adjust blower cooling and heating speed as needed.
- For most jobs, about 400 CFM per ton when cooling is desirable.
- INSTALLATION IS TO BE ADJUSTED TO OBTAIN TEMPERATURE RISE WITHIN THE RANGE SPECIFIED ON THE RATING PLATE.
- This chart is for information only. For satisfactory operation, external static pressure must not exceed value shown on the rating plate.
- The dashed (----) areas indicate a temperature rise not recommended for this model.
- At higher altitudes, a properly derated unit will have approximately the same temperature rise at a particular CFM, while ESP at the CFM will be lower





MODEL	DESCRIPTION	GMES92 0403ANA	GMES92 0603BNA	GMES92 0803BNA	GMES92 0804CNA	GMES92 0805CNA	GMES92 1004CNA	GMES92 1005CNA	GMES92 1205DNA
CVENT-2	Concentric Vent Kit (2")	✓	✓	✓	✓	✓	✓	✓	---
CVENT-3	Concentric Vent Kit (3")	✓	✓	✓	✓	✓	✓	✓	✓
CFSB17	Downflow Sub-Base 17.5"	---	---	---	---	---	---	---	---
CFSB21	Downflow Sub-Base 21"	---	---	---	---	---	---	---	---
CFSB24	Downflow Sub-Base 24"	---	---	---	---	---	---	---	---
RF000142	Drain Kit-Horizontal Left Vertical Flue	✓	✓	✓	✓	✓	✓	✓	✓
EFR02	External Filter Rack with 16"x25" Permanent Filter	✓	✓	✓	✓	---	✓	---	---
0170K00000S	Flush Mount Vent Kit- 3" or 2"	✓	✓	✓	✓	✓	✓	✓	✓
0170K00001S	Flush Mount Vent Kit- 2"	✓	✓	✓	✓	✓	✓	✓	---
AFE18-60A	Fossil Fuel (Dual Fuel) Kit	✓	✓	✓	✓	✓	✓	✓	✓
HASFK	High-Altitude Natural Gas Kit	TBD	HASFK-4	HASFK-4	HASFK-4	HASFK-4	HASFK-4	HASFK-4	HASFK-4
HASFK	High-Altitude LP Gas Kit	TBD	HASFK-4	HASFK-5	HASFK-4	HASFK-4	HASFK-4	HASFK-5	HASFK-4
LPLP03	Low LP Gas Pressure Switch	✓	✓	✓	✓	✓	✓	✓	✓
LPM-07	LP Conversion Kits	✓	✓	✓	✓	✓	✓	✓	✓
TK-400	Twinning Kit	✓	✓	✓	✓	✓	✓	✓	✓

