

M-SERIES

SUBMITTAL DATA: MLZ-KP12NA

12,000 BTU/H ONE-WAY CEILING-CASSETTE INDOOR UNIT FOR MXZ MULTI-ZONE HEAT-PUMP SYSTEMS



Job Name:

System Reference:

Date:



INDOOR UNIT FEATURES

- Available sizes: 9, 12, 18 kBtu/h
- Fits between 16" joists
- Stylish, square design panel
- Built in condensate lift mechanism (19.6")
- Serviceable from the bottom (electrical and flare connections)
- Adjustable fan speeds and vane directions
- Pocket inside the unit for kumo cloud® wireless interface

SPECIFICATIONS: MLZ-KP12NA

MODEL NAME			MLZ-KP12NA
Cooling Capacity*1		Btu/h	12,000
Heating Capacity*2		Btu/h	15,000
Electrical	Voltage, Phase, Frequency		208 / 230V, 1-phase, 60 Hz
	Guaranteed Voltage Range		198 – 253
	Voltage: Indoor - Outdoor, S1-S2		208 / 230
	Voltage: Indoor - Outdoor, S2-S3		24
	Voltage: Indoor - Remote controller		12
MCA		A	1
Fan Motor Full Load Amperage		A	0.68
Fan Motor Output		W	30
Airflow Rate, Dry, Cooling		CFM	212-258-297-332
Airflow Rate, Dry, Heating		CFM	212-272-311-350
External Static Pressure		in. WG	-
Sound Pressure Level Cooling		dB(A)	27-32-36-40
Sound Pressure Level Heating		dB(A)	26-32-36-40
Drain Pipe Size		In. (mm)	Ø1 [26mm]
Condensate Lift Mechanism, Max. Distance		In. (mm)	19 11/16 [500]
Heat Exchanger Type			Plate fin coil
External Finish Color			White
Unit Dimensions	W: In. (mm)		43-3/8 [1,102]
	D: In. (mm)		14-3/16 [360]
	H: In. (mm)		7-5/16 [185]
Package Dimensions	W: In.		46 - 5/16 [1,177]
	D: In.		15-3/4 [400]
	H: In.		11 [279]
Unit Weight		Lbs. (kg)	34 [15]
Package Weight		Lbs.	41 [18]
Refrigerant Type			R410A
Piping	Gas Pipe Size O.D. (Flared)		3/8 [9.52]
	Liquid Pipe Size O.D. (Flared)		1/4 [6.35]

AHRI Rated Conditions (Rated data is determined at a fixed compressor speed)	*1 Cooling (Indoor // Outdoor)	°F	80°F DB, 67°F WB // 95°F DB, 75°F WB
	*2 Heating at 47°F (Indoor // Outdoor)	°F	70°F DB, 60°F WB // 47°F DB, 43°F WB

For data on specific indoor units (all ducted, all non-ducted, and both ducted and non-ducted) combinations, see the MXZ Technical and Service Manual.
Applications should be restricted to comfort cooling only; equipment cooling applications are not recommended for low ambient temperature conditions.

ACCESSORIES: MLZ-KP09NA

Anti-Allergy Enzyme Filter	□ MAC-408FT-E
Grille (required)	□ MLP-444W
Backlit, Wall-mounted, Wireless Controller	□ MHK1
Portable Central Controller	□ MCCH1
Wired MA Controller	□ PAR-33MAA
Simple MA Controller	□ PAC-YT53CRAU
Touch MA Controller	□ PAR-CT01MAU-SB
Wireless Temperature and Humidity Sensor	□ PAC-USWHS003-TH-1
System Control Interface	□ MAC-333IF-E*1
Wireless Interface	□ PAC-USWHS002-WF-1
Thermostat Interface	□ PAC-US444CN-1
kumo station™	□ PAC-WHS01HC-E
USNAP Interface	□ PAC-WHS01UP-E
IT Extender	□ PAC-WHS01IE-E
BACNET® Interface	□ PAC-UKPRC001-CN-1
External Fan / Heater Control Relay Adapter	□ CN24RELAY-KIT-CM3
Advanced Blue Diamond Mini-Condensation pump w/ Reservoir & Sensor — 208/230V application	□ X87-835 - 110 to 250V
MaxiBlue Advanced Blue Diamond Mini-Condensation pump w/ Reservoir & Sensor (110V) up to 48,000 Btu/h [recommended]	□ X87-711 - 110V
MaxiBlue Advanced Blue Diamond Mini-Condensation pump w/ Reservoir & Sensor (208/230V) up to 48,000 Btu/h [recommended]	□ X87-721 - 208/230V
MegaBlue Blue Diamond Condensate Pump (110-230V) up to 170,000 Btu/h	□ X87-835
Drain Pan Level Sensor	□ DPLS2
(30A/600V/UL) [fits 2" X 4" utility box]	□ TAZ-MS303

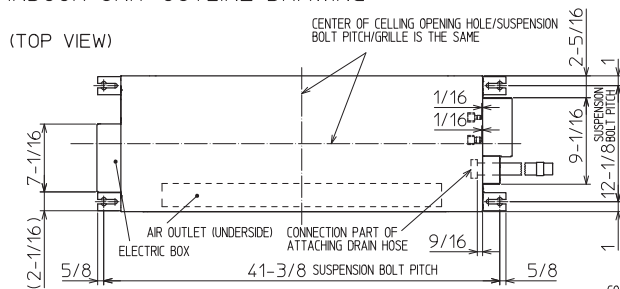
*1 Allows M-Series indoor units to connect to a MA controller

DIMENSIONS: MLZ-KP12NA

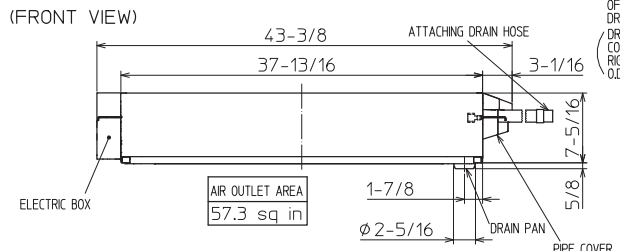
Unit: inch

INDOOR UNIT OUTLINE DRAWING

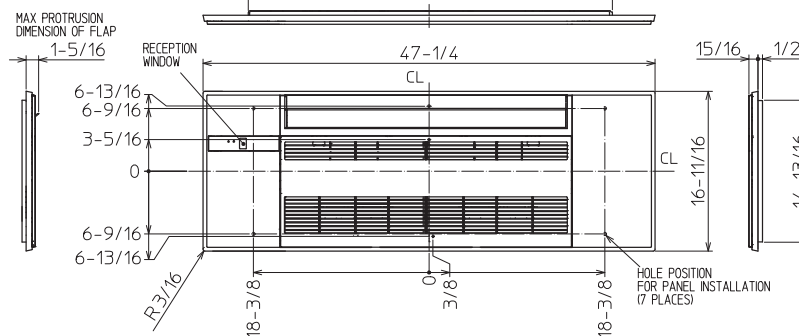
(TOP VIEW)



(FRONT VIEW)

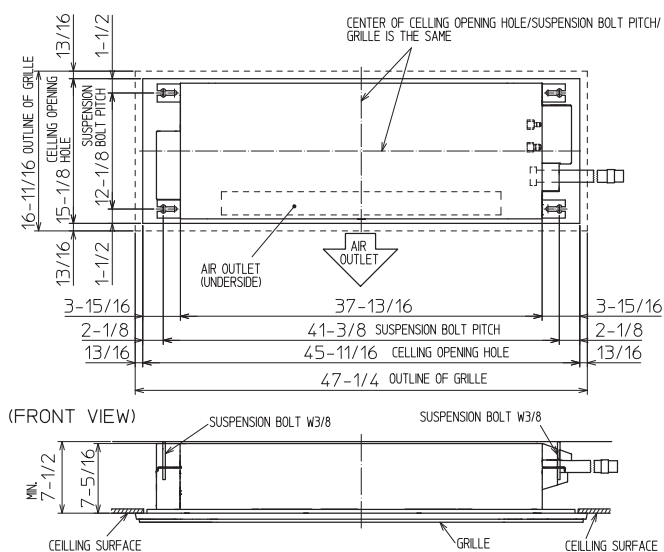


GRILLE OUTLINE DRAWING
(MLP-444W)

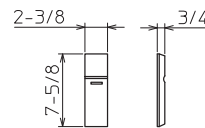


INDOOR UNIT DETAIL VIEW
(TOP VIEW)

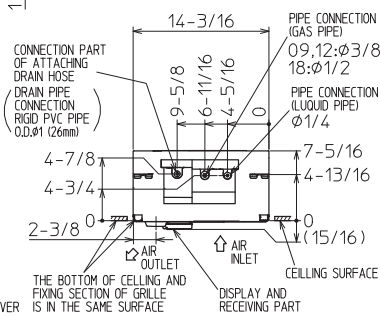
(TOP VIEW)



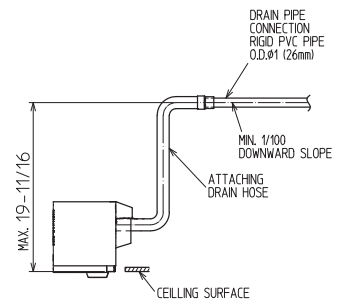
REMOTE CONTROLLER OUTLINE DRAWING



(RIGHT SIDE VIEW)

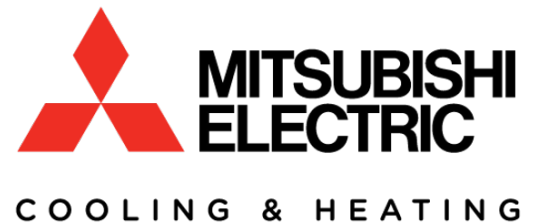


THE METHOD FOR STANDING
DRAIN FROM INDOOR UNIT
※ CUT THE DRAIN HOSE (ACCESSORY)
FOR USE, IF NECESSARY.



		KP09/12NA	KP18NA
EXTENSION PIPE	LIQUID PIPE O.D.	$\phi 1/4$	
	GAS PIPE O.D.	$\phi 3/8$	$\phi 1/2$
CONNECTIONS OF PIPE	LIQUID PIPE	FLARED CONNECTION $\phi 1/4$	
	GAS PIPE	FLARED CONNECTION $\phi 3/8$	FLARED CONNECTION $\phi 1/2$
DRAIN HOSE		HEAT INSULATOR O.D.	CONNECTION I.D. EFFECTIVE LENGTH $\phi 1-1/4$ $\phi 1$ $18-7/8$
DRAIN PIPE CONNECTION		RIGID PVC PIPE O.D. $\phi 1$ (26mm)	

NOTE1. CUT THE DRAIN HOSE (ACCESSORY) FOR USE, IF NECESSARY.



1340 Satellite Boulevard, Suwanee, GA 30024
Toll Free: 800-433-4822 www.mehvac.com



FORM# MLZ-KP12NA For MXZ MULTI-ZONE SYSTEMS - 201803

Specifications are subject to change without notice.

Copyright © 2018 Mitsubishi Electric US, Inc.