

Submittal Data Sheet

15.0 SEER, Heat Pump System, 3.0 Ton, Outdoor Unit-GSZ160361B*

Submitted By : Goodman/Amana Unitary Test System

Submitted To : N/A

Tags : AHRI 201667795 Products [GSZ160361B* , ASPT37B14A*] , SEER 15.0 , EER 12.5 , HSPF

STANDARD FEATURES:

- Energy-efficient compressor
- Single-speed PSC condenser fan motor
- Factory-installed filter drier
- Factory-installed suction line accumulator
- Factory-installed compressor crankcase heater
- Factory-installed high-capacity muffler
- Factory-installed high and low-pressure switches
- SmartShift® technology with short-cycle protection to ensure quiet, reliable defrost
- Contactor with lug connection
- Fully charged for fifteen feet of tubing length
- AHRI Certified-ETL Listed
- Copper tube & enhanced aluminum fin coil.

CABINET FEATURES:

- Heavy-gauge galvanized steel cabinet and louvered coil guards
- Service valves with sweat connections and easy-access gauge ports
- Engineered sound control top design
- Baked-on powder-paint finish with 500-hour salt-spray approval
- Single-panel access to controls with space for field-installed accessories
- Service port and controls are accessible while unit is operating
- Compact footprint
- Rust-resistant screws
- When properly anchored, meets the 2017 Florida Building Code unit integrity requirements for hurricane-type winds (Anchor bracket kits available.)



At Goodman, we believe in American dependability. Units are designed, engineered and assembled in the U.S.A.



Submittal Data Sheet

15.0 SEER, Heat Pump System,3.0 Ton, Outdoor Unit-GSZ160361B*

Submitted By : Goodman/Amana Unitary Test System

Submitted To : N/A

Tags : AHRI 201667795 Products [GSZ160361B* , ASPT37B14A*] , SEER 15.0 , EER 12.5 , HSPF

SYSTEM PERFORMANCE

Outdoor Unit Model No.:	GSZ160361B*	Description :	15.0 SEER, Heat Pump System, 3.0 Ton Outdoor System
Indoor Unit Model No.:	ASPT37B14A*		
TXV/PISTON :	Factory		
Rated Cooling Conditions:	Outdoor (°F DB/WB):95/75 Indoor (°F DB/WB):80/67	Rated Heating Conditions:	Outdoor (°F DB/WB):47/43 Indoor (°F DB/WB):70/60
Rated Cooling Capacity (Btu/hr):	33600	OD Rated Heating Capacity (Btu/hr)	35000
EER:	12.5	Heating COP:	3.8
SEER:	15.0	* HSPF:	N/A

OUTDOOR UNIT DETAILS : GSZ160361B*

Power Supply (V/Hz/Ph):	208/230/60/1	Compressor Type:	Scroll
Min. Circuit Amps MCA (A):	18.9	Compressor Stages:	Single Stage
Max Overcurrent Protection (MOP) (A):	30	Suction Valve Connection Size (in):	7/8
Compressor Rated Load Amps :	14.1	Liquid Valve Connection Size (in):	3/8
Refrigerant Type:	R-410A	Sound Power(High/Med/Low) (dBA):	73 / - / N/A
Holding Refrigerant Charge (oz):	175	Cooling Operation Range (°F DB):	55 - 125
Additional Charge (oz/ft):	0.60	Heating Operation Range (°F DB):	-20 - 70
Pre-charge Piping (Length) (ft):	15	Net Weight (lb):	220
Dimensions (HxWxD) (in):	42-1/4 x 35-3/4 x 35-3/4	Gross Weight (lb):	246
*Max. Pipe Length (Vertical) (ft):	50	*Max. Pipe Length (Total) (ft):	80

**Refer to Long Line Set Application TP-107 for lines greater than 80 ft. or vertical elevation changes more than 50 ft. for single stage equipment and 25 ft. for 2-stage equipment.*



At Goodman, we believe in American dependability. Units are designed, engineered and assembled in the U.S.A.



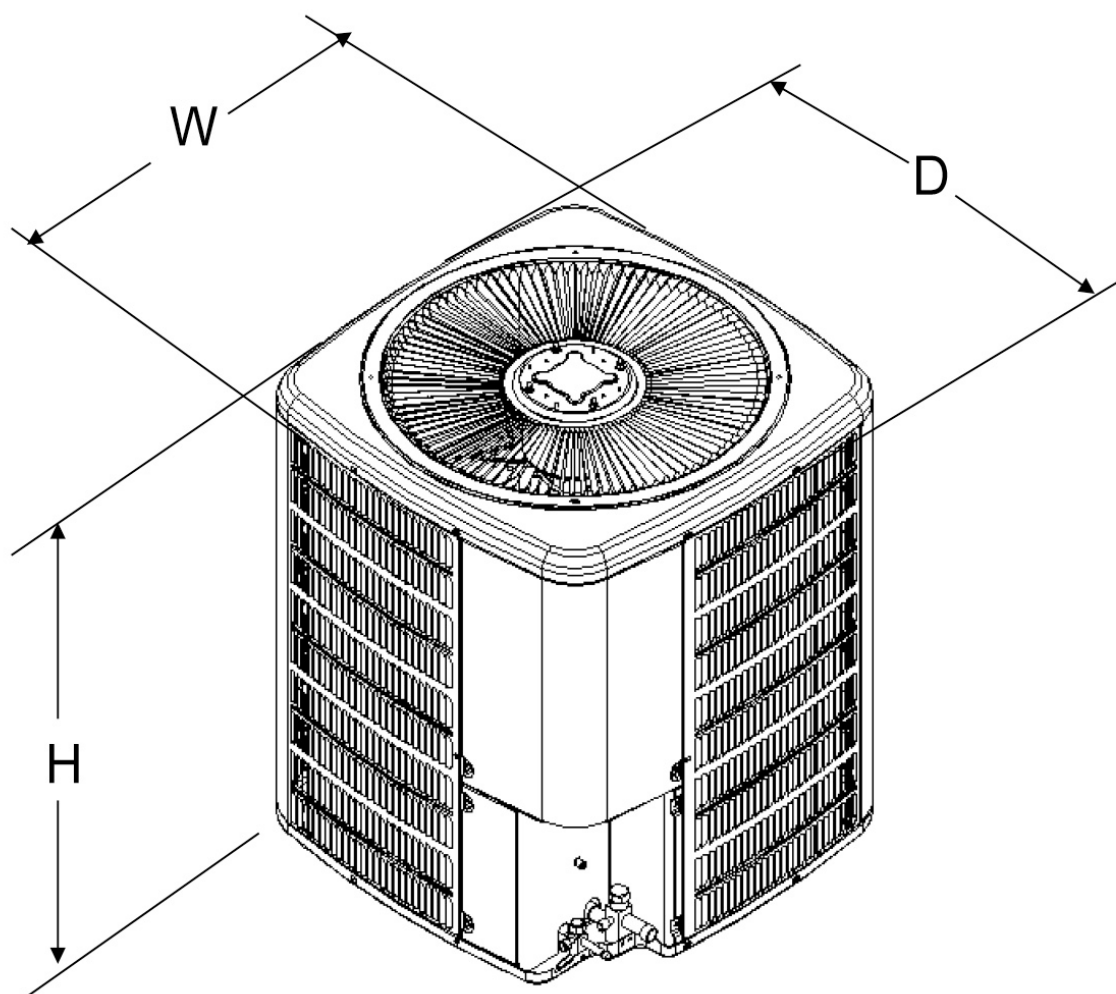
Submittal Data Sheet

15.0 SEER, Heat Pump System, 3.0 Ton, Outdoor Unit-GSZ160361B*

Submitted By : Goodman/Amana Unitary Test System

Submitted To : N/A

Tags : AHRI 201667795 Products [GSZ160361B* , ASPT37B14A*] , SEER 15.0 , EER 12.5 , HSPF



At Goodman, we believe in American dependability. Units are designed, engineered and assembled in the U.S.A.



Submittal Data Sheet

15.0 SEER, Heat Pump System, 3.0 Ton, Outdoor Unit-GSZ160361B*

Submitted By : Goodman/Amana Unitary Test System

Submitted To : N/A

Tags : AHRI 201667795 Products [GSZ160361B* , ASPT37B14A*] , SEER 15.0 , EER 12.5 , HSPF

STANDARD FEATURES:

- Internal factory-installed thermal expansion valves for cooling and heat pump applications
- Direct drive, multi-speed ECM blower motor
- All-aluminum evaporator coil
- Coil mounting track for quick repositioning
- Optimized for use with R-410A refrigerant
- Cabinet air leakage less than 2.0% at 1.0 inch H2O when tested in accordance with ASHRAE standard 193
- Cabinet air leakage less than 1.4% at 0.5 inch H2O when tested in accordance with ASHRAE standard 193
- 3 kW – 25 kW electric heater kits
- AHRI certified
- ETL listed

CABINET FEATURES:

- Rigid SmartFrame cabinet
- Horizontal or vertical configuration capabilities
- 21" depth for easier attic access
- DecaBDE-free thermoplastic drain pan with secondary drain connections
- Screw-less sides and back helps to reduce condensation when installed in humid locations
- Foil-faced insulation covers the internal casing to reduce cabinet condensation
- Galvanized, leather grain-embossed finish
- Glue-less cabinet insulation retention
- Tool-less filter access

Data Missing



At Goodman, we believe in American dependability. Units are designed, engineered and assembled in the U.S.A.



Submittal Data Sheet

15.0 SEER, Heat Pump System,3.0 Ton, Outdoor Unit-GSZ160361B*

Submitted By : Goodman/Amana Unitary Test System

Submitted To : N/A

Tags : AHRI 201667795 Products [GSZ160361B* , ASPT37B14A*] , SEER 15.0 , EER 12.5 , HSPF

INDOOR AIR HANDLER UNIT DETAILS : ASPT37B14

Power Supply (V/Hz/Ph):	208/240/60/1	Suction Connection Size (in):	7/8
Min. Circuit Amps MCA (A):	5.6/5.6	Liquid Connection Size (in):	3/8
Max Overcurrent Protection (MOP) (A):	15	Condensate Connection (in):	3/4
Net Weight (lb):	129	Dimensions (HxWxD) (in):	53-1/2 x 17-1/2 x 21
Gross Weight (lb):	125		

The Electrical data shown here in submittal is for Air Handler only with no heat added. When adding Heat Kit please refer to Heat Kit Spec Sheet for electrical requirements



At Goodman, we believe in American dependability. Units are designed, engineered and assembled in the U.S.A.



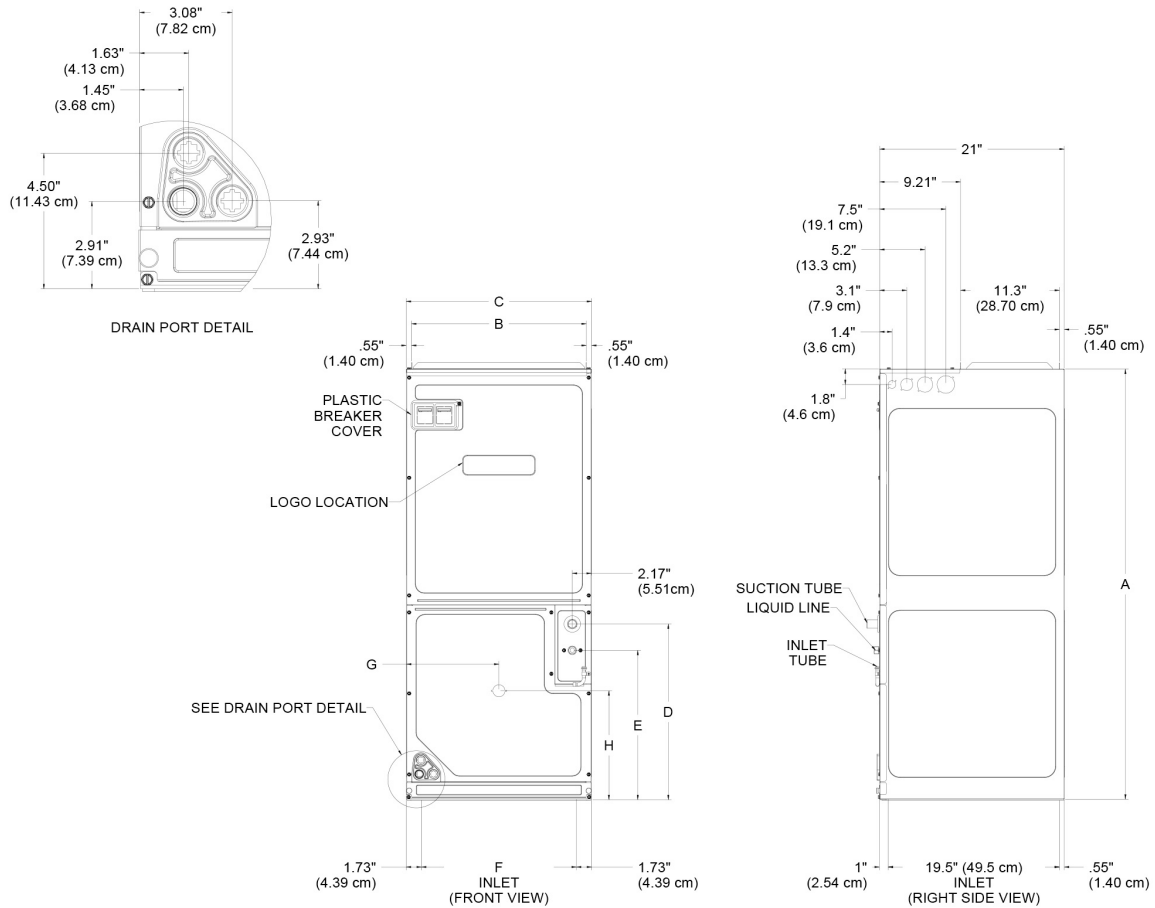
Submittal Data Sheet

15.0 SEER, Heat Pump System,3.0 Ton, Outdoor Unit-GSZ160361B*

Submitted By : Goodman/Amana Unitary Test System

Submitted To : N/A

Tags : AHRI 201667795 Products [GSZ160361B* , ASPT37B14A*] , SEER 15.0 , EER 12.5 , HSPF



At Goodman, we believe in American dependability. Units are designed, engineered and assembled in the U.S.A.

