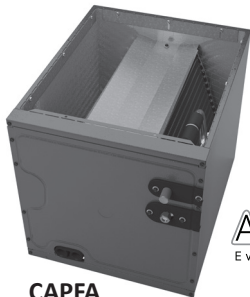
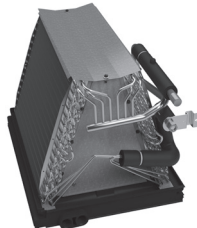


*CASED, PAINTED UPFLOW/DOWNFLOW,
UNCASED UPFLOW/DOWNFLOW,
HORIZONTAL "A", AND HORIZONTAL SLAB*



**CAPFA
Cased**

AlumaFin7
Evaporator Coil



**CAUFA
Uncased**

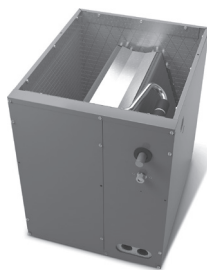


**CAUF
Uncased**



**CAPF
Cased**

**CHPF
Horizontal "A"**



**CAPT
Cased with Internal TXV**



**CSCF
Horizontal Slab**

Note: Do not use these coils on oil furnaces or any applications where the temperature on the drain pan may exceed 300°F. If these coils are applied with an oil furnace or another application where high temperatures threaten or jeopardize the durability of the drain pan, you must replace the factory-installed drain pan with a high-temperature drain pan. High-temperature drain pan kits are available as field-installed accessories.

Standard Features

- All-Aluminum evaporator coil
- Optimized for use with R-410A refrigerant
- Some models suitable for use with R-410A or R-22 refrigerant
- CAPT models feature factory-installed thermal expansion valves for cooling and heat pump applications
- Check flowrator for cooling and heat pump applications
- Vertical and horizontal models available
- 21" depth for easier attic access
- Foil-faced insulation covers the internal casing to reduce cabinet condensation
- Galvanized, leather grain-embossed finish
- Rust resistant, thermoplastic drain pans featuring a low water-retention design
- DecaBDE-free thermoplastic drain pan with secondary drain connections
- UV-resistant drain pan
- AHRI certified; ETL listed



* Complete warranty details available from your local dealer or at www.franklinhvacsyste.ms.com. To receive the 10-Year Parts Limited Warranty, online registration must be completed within 60 days of installation. Online registration is not required in California or Québec.



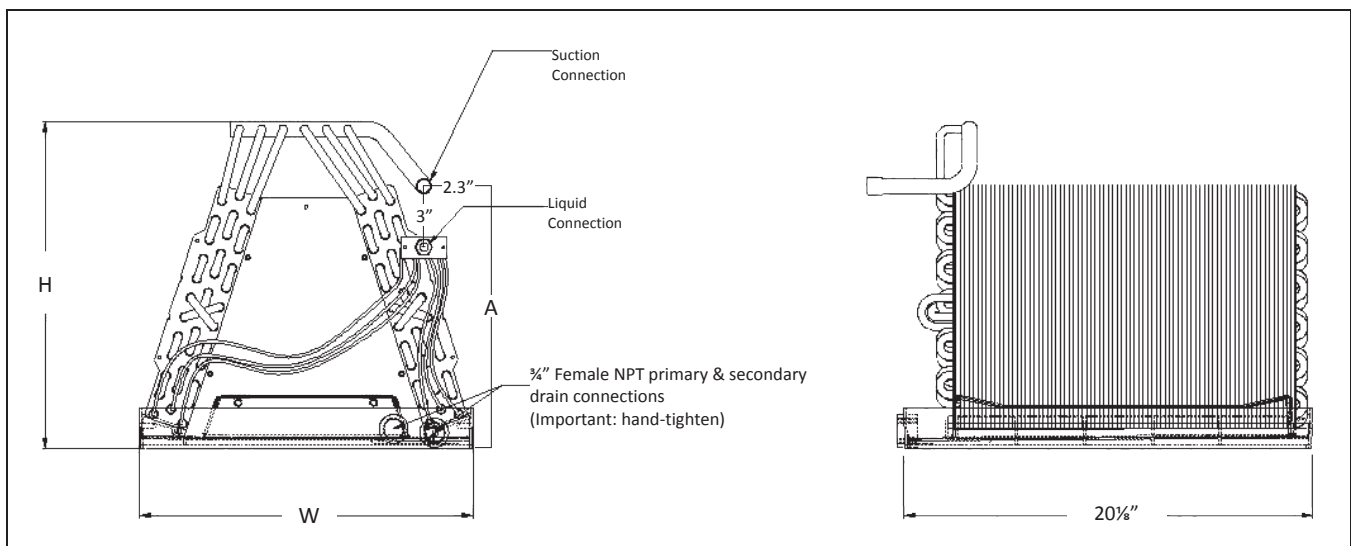
SPECIFICATIONS

| MODEL | UNIT DIMENSIONS | | | NOMINAL TONS | CONNECTION | | PISTON SIZE* | SHIP WEIGHT (LBS) |
|------------|-----------------|------|-----|--------------|------------|---------|--------------|-------------------|
| | W | H | A | | LIQUID | SUCTION | | |
| CAUF1824A6 | 13" | 16¼" | 13" | 1½-2 | ⅜" | ¾" | .059 | 18 |
| CAUF1824B6 | 16½" | 16⅝" | 13" | 1½-2 | ⅜" | ¾" | .059 | 23 |
| CAUF1824C6 | 20" | 16⅝" | 17" | 1½-2 | ⅜" | ¾" | .059 | 27 |
| CAUF3030A6 | 13" | 20⅞" | 17" | 2½ | ⅜" | ¾" | .065 | 25 |
| CAUF3030B6 | 16½" | 18¾" | 17" | 2½ | ⅜" | ¾" | .065 | 22 |
| CAUF3030C6 | 20" | 17⅞" | 17" | 2½ | ⅜" | ¾" | .065 | 25 |
| CAUF3030D6 | 23" | 17⅞" | 17" | 2½ | ⅜" | ¾" | .065 | 32 |
| CAUF3131B6 | 16½" | 20⅞" | 17" | 2½ | ⅜" | ¾" | .068 | 27 |
| CAUF3137B6 | 16½" | 27" | 25" | 2½-3 | ⅜" | ¾" | .071 | 53 |
| CAUF3131C6 | 20" | 20" | 17" | 2½ | ⅜" | ¾" | .068 | 31 |
| CAUF3636A6 | 13" | 19½" | 17" | 3 | ⅜" | ¾" | .071 | 30 |
| CAUF3636B6 | 16½" | 19⅝" | 17" | 3 | ⅜" | ¾" | .071 | 25 |
| CAUF3636C6 | 20" | 19⅝" | 17" | 3 | ⅜" | ¾" | .071 | 28 |
| CAUF3636D6 | 23" | 19⅝" | 17" | 3 | ⅜" | ¾" | .071 | 36 |
| CAUF3642C6 | 20" | 19" | 17" | 3-3½ | ⅜" | ¾" | .078 | 29 |
| CAUF3642D6 | 23" | 19⅝" | 17" | 3-3½ | ⅜" | ¾" | .078 | 34 |
| CAUF3743C6 | 20" | 28⅞" | 25" | 3-3½ | ⅜" | ⅞" | .078 | 46 |
| CAUF3743D6 | 23" | 27⅞" | 25" | 3-3½ | ⅜" | ⅞" | .078 | 43 |
| CAUF4860C6 | 20" | 28" | 25" | 4-5 | ⅜" | ⅞" | .093 | 48 |
| CAUF4860D6 | 23" | 28" | 25" | 4-5 | ⅜" | ⅞" | .093 | 39 |
| CAUF4961C6 | 20" | 28" | 25" | 4-5 | ⅜" | ⅞" | .093 | 54 |
| CAUF4961D6 | 23" | 27" | 25" | 4-5 | ⅜" | ⅞" | .093 | 59 |

* Shipped with Coil

Note: For a properly matched system and piston sizing information, refer to the piston kit chart of the corresponding outdoor unit.

DIMENSIONS



SPECIFICATIONS

AlumaFin⁷
Evaporator Coil

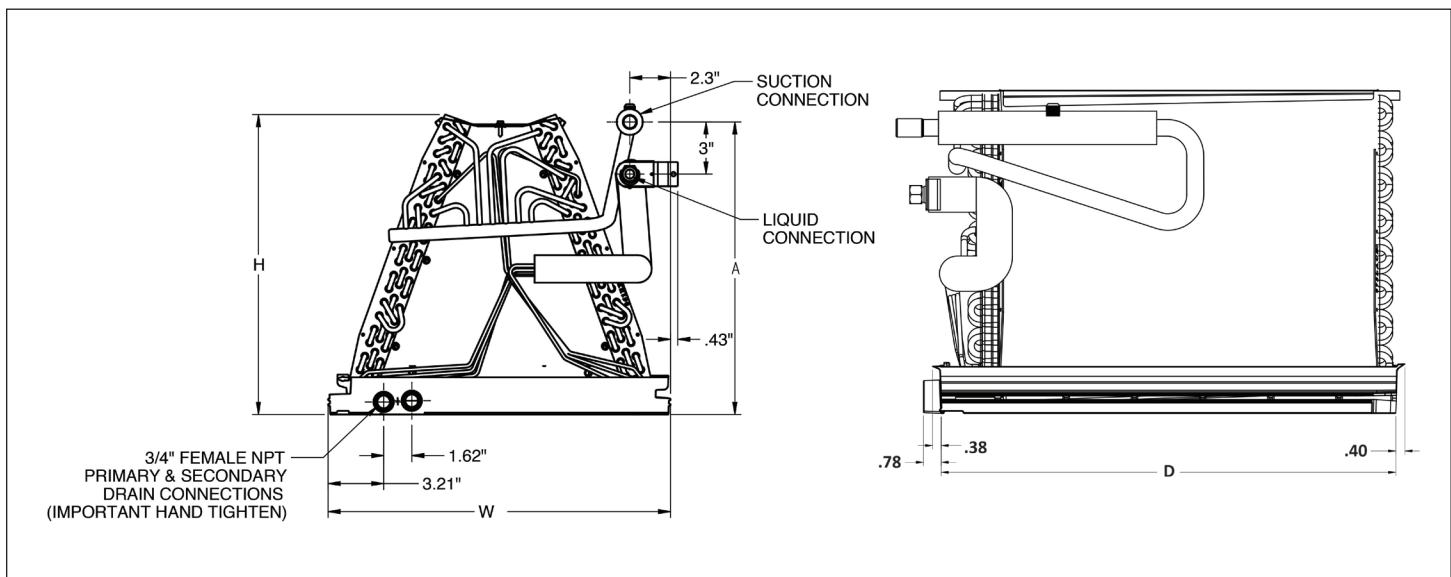


| MODEL | UNIT DIMENSIONS | | | | NOMINAL TONS | CONNECTION | | PISTON SIZE* | SHIP WEIGHT (LBS) |
|-------------|-----------------|---------|---------|---------|--------------|------------|---------|--------------|-------------------|
| | W | D | H | A | | LIQUID | SUCTION | | |
| CAUFA1714A6 | 12 7/8" | 20 7/8" | 11 1/4" | 5 7/8" | 1½ | 3/8" | 3/4" | 0.051 | 16 |
| CAUFA1714B6 | 16 3/8" | 20 7/8" | 11 1/8" | 5 7/8" | 1½ | 3/8" | 3/4" | 0.051 | 18 |
| CAUFA1818A6 | 12 7/8" | 20 7/8" | 14 5/8" | 12 7/8" | 1½ | 3/8" | 3/4" | 0.055 | 18 |
| CAUFA1818B6 | 16 3/8" | 20 7/8" | 14 1/2" | 12 7/8" | 1½ | 3/8" | 3/4" | 0.055 | 20 |
| CAUFA1818C6 | 19 7/8" | 20 7/8" | 14 3/8" | 12 7/8" | 1½ | 3/8" | 3/4" | 0.055 | 26 |
| CAUFA2318A6 | 12 7/8" | 20 7/8" | 14 5/8" | 12 7/8" | 2 | 3/8" | 3/4" | 0.057 | 18 |
| CAUFA2318B6 | 16 3/8" | 20 7/8" | 14 1/2" | 12 7/8" | 2 | 3/8" | 3/4" | 0.057 | 20 |
| CAUFA2318C6 | 19 7/8" | 20 7/8" | 14 3/8" | 12 7/8" | 2 | 3/8" | 3/4" | 0.057 | 26 |
| CAUFA2418A6 | 12 7/8" | 20 7/8" | 14 5/8" | 12 7/8" | 2 | 3/8" | 3/4" | 0.057 | 18 |
| CAUFA2418B6 | 16 3/8" | 20 7/8" | 14 1/2" | 12 7/8" | 2 | 3/8" | 3/4" | 0.057 | 20 |
| CAUFA2418C6 | 19 7/8" | 20 7/8" | 14 3/8" | 12 7/8" | 2 | 3/8" | 3/4" | 0.057 | 26 |
| CAUFA2422A6 | 12 7/8" | 20 7/8" | 18 1/8" | 16 7/8" | 2 | 3/8" | 3/4" | 0.059 | 26 |
| CAUFA2422B6 | 16 3/8" | 20 7/8" | 17 7/8" | 16 7/8" | 2 | 3/8" | 3/4" | 0.059 | 28 |
| CAUFA2422C6 | 19 7/8" | 20 7/8" | 17 3/8" | 16 7/8" | 2 | 3/8" | 3/4" | 0.059 | 30 |
| CAUFA3022A6 | 12 7/8" | 20 7/8" | 18 1/8" | 16 7/8" | 2½ | 3/8" | 3/4" | 0.063 | 26 |
| CAUFA3022B6 | 16 3/8" | 20 7/8" | 17 7/8" | 16 7/8" | 2½ | 3/8" | 3/4" | 0.063 | 28 |
| CAUFA3022C6 | 19 7/8" | 20 7/8" | 17 7/8" | 16 7/8" | 2½ | 3/8" | 3/4" | 0.063 | 30 |
| CAUFA3022D6 | 23 3/8" | 20 7/8" | 17 1/4" | 16 7/8" | 2½ | 3/8" | 3/4" | 0.063 | 32 |
| CAUFA3626B6 | 16 3/8" | 20 7/8" | 21" | 20 7/8" | 3 | 3/8" | 7/8" | 0.065 | 30 |
| CAUFA3626C6 | 19 7/8" | 20 7/8" | 20 3/4" | 20 7/8" | 3 | 3/8" | 7/8" | 0.065 | 31 |
| CAUFA3626D6 | 23 3/8" | 20 7/8" | 20 5/8" | 20 7/8" | 3 | 3/8" | 7/8" | 0.065 | 35 |

* Shipped with Coil

Note: For a properly matched system and piston sizing information, refer to the piston kit chart of the corresponding outdoor unit.

DIMENSIONS



SPECIFICATIONS

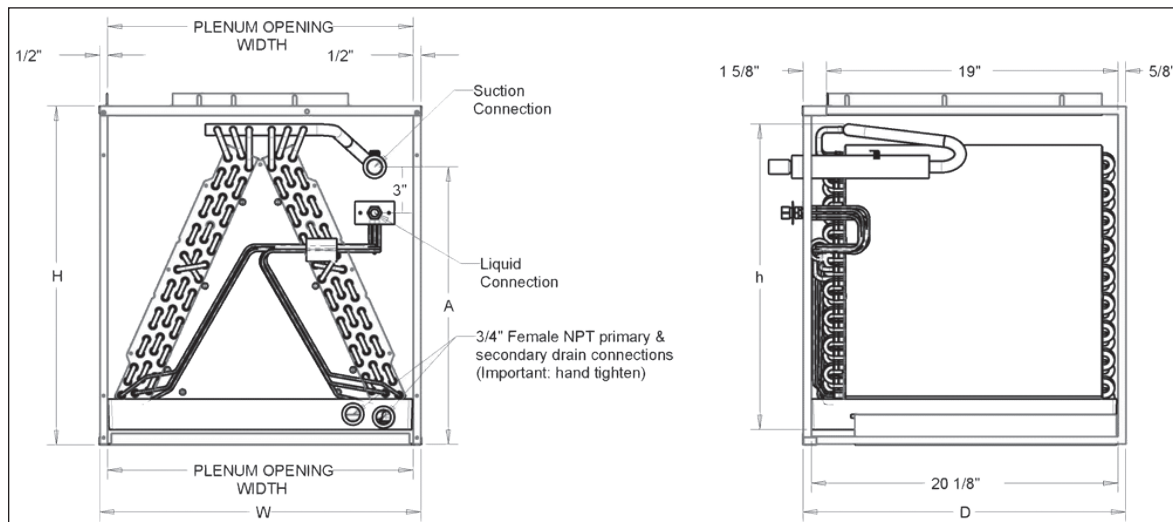


| MODEL | UNIT DIMENSIONS | | | NOMINAL TONS | CONNECTION | | PISTON SIZE* | SHIP WEIGHT (LBS) |
|------------|--------------------|--------------------|-----|--------------------|-----------------|-----------------|--------------|-------------------|
| | W | D | H | | LIQUID | SUCTION | | |
| CAPF1824A6 | 14" | 21 $\frac{1}{8}$ " | 18" | 1 $\frac{1}{2}$ -2 | $\frac{3}{8}$ " | $\frac{3}{4}$ " | .059 | 32 |
| CAPF1824B6 | 17 $\frac{1}{2}$ " | 21 $\frac{1}{8}$ " | 18" | 1 $\frac{1}{2}$ -2 | $\frac{3}{8}$ " | $\frac{3}{4}$ " | .059 | 35 |
| CAPF1824C6 | 21" | 21 $\frac{1}{8}$ " | 22" | 1 $\frac{1}{2}$ -2 | $\frac{3}{8}$ " | $\frac{3}{4}$ " | .059 | 42 |
| CAPF3030A6 | 14" | 21 $\frac{1}{8}$ " | 22" | 2 $\frac{1}{2}$ | $\frac{3}{8}$ " | $\frac{3}{4}$ " | .065 | 41 |
| CAPF3030B6 | 17 $\frac{1}{2}$ " | 21 $\frac{1}{8}$ " | 22" | 2 $\frac{1}{2}$ | $\frac{3}{8}$ " | $\frac{3}{4}$ " | .065 | 43 |
| CAPF3030C6 | 21" | 21 $\frac{1}{8}$ " | 22" | 2 $\frac{1}{2}$ | $\frac{3}{8}$ " | $\frac{3}{4}$ " | .065 | 44 |
| CAPF3030D6 | 24 $\frac{1}{2}$ " | 21 $\frac{1}{8}$ " | 22" | 2 $\frac{1}{2}$ | $\frac{3}{8}$ " | $\frac{3}{4}$ " | .065 | 52 |
| CAPF3131B6 | 17 $\frac{1}{2}$ " | 21 $\frac{1}{8}$ " | 22" | 2 $\frac{1}{2}$ | $\frac{3}{8}$ " | $\frac{3}{4}$ " | .068 | 46 |
| CAPF3137B6 | 17 $\frac{1}{2}$ " | 21 $\frac{1}{8}$ " | 30" | 2 $\frac{1}{2}$ -3 | $\frac{3}{8}$ " | $\frac{3}{4}$ " | .071 | 53 |
| CAPF3131C6 | 21" | 21 $\frac{1}{8}$ " | 22" | 2 $\frac{1}{2}$ | $\frac{3}{8}$ " | $\frac{3}{4}$ " | .068 | 50 |
| CAPF3636A6 | 14" | 21 $\frac{1}{8}$ " | 22" | 3 | $\frac{3}{8}$ " | $\frac{3}{4}$ " | .071 | 40 |
| CAPF3636B6 | 17 $\frac{1}{2}$ " | 21 $\frac{1}{8}$ " | 22" | 3 | $\frac{3}{8}$ " | $\frac{3}{4}$ " | .071 | 44 |
| CAPF3636C6 | 21" | 21 $\frac{1}{8}$ " | 22" | 3 | $\frac{3}{8}$ " | $\frac{3}{4}$ " | .071 | 53 |
| CAPF3636D6 | 24 $\frac{1}{2}$ " | 21 $\frac{1}{8}$ " | 22" | 3 | $\frac{3}{8}$ " | $\frac{3}{4}$ " | .071 | 51 |
| CAPF3642C6 | 21" | 21 $\frac{1}{8}$ " | 22" | 3-3 $\frac{1}{2}$ | $\frac{3}{8}$ " | $\frac{3}{4}$ " | .078 | 49 |
| CAPF3642D6 | 24 $\frac{1}{2}$ " | 21 $\frac{1}{8}$ " | 22" | 3-3 $\frac{1}{2}$ | $\frac{3}{8}$ " | $\frac{3}{4}$ " | .078 | 52 |
| CAPF3743C6 | 21" | 21 $\frac{1}{8}$ " | 30" | 3-3 $\frac{1}{2}$ | $\frac{3}{8}$ " | $\frac{7}{8}$ " | .078 | 63 |
| CAPF3743D6 | 24 $\frac{1}{2}$ " | 21 $\frac{1}{8}$ " | 30" | 3-3 $\frac{1}{2}$ | $\frac{3}{8}$ " | $\frac{7}{8}$ " | .078 | 75 |
| CAPF4860C6 | 21" | 21 $\frac{1}{8}$ " | 30" | 4-5 | $\frac{3}{8}$ " | $\frac{7}{8}$ " | .093 | 65 |
| CAPF4860D6 | 24 $\frac{1}{2}$ " | 21 $\frac{1}{8}$ " | 30" | 4-5 | $\frac{3}{8}$ " | $\frac{7}{8}$ " | .093 | 68 |
| CAPF4961C6 | 21" | 21 $\frac{1}{8}$ " | 30" | 4-5 | $\frac{3}{8}$ " | $\frac{7}{8}$ " | .093 | 73 |
| CAPF4961D6 | 24 $\frac{1}{2}$ " | 21 $\frac{1}{8}$ " | 30" | 4-5 | $\frac{3}{8}$ " | $\frac{7}{8}$ " | .093 | 76 |

* Shipped with Coil

Note: For a properly matched system and piston sizing information, refer to the piston kit chart of the corresponding outdoor unit.

DIMENSIONS



SPECIFICATIONS

AlumaFin⁷
Evaporator Coil

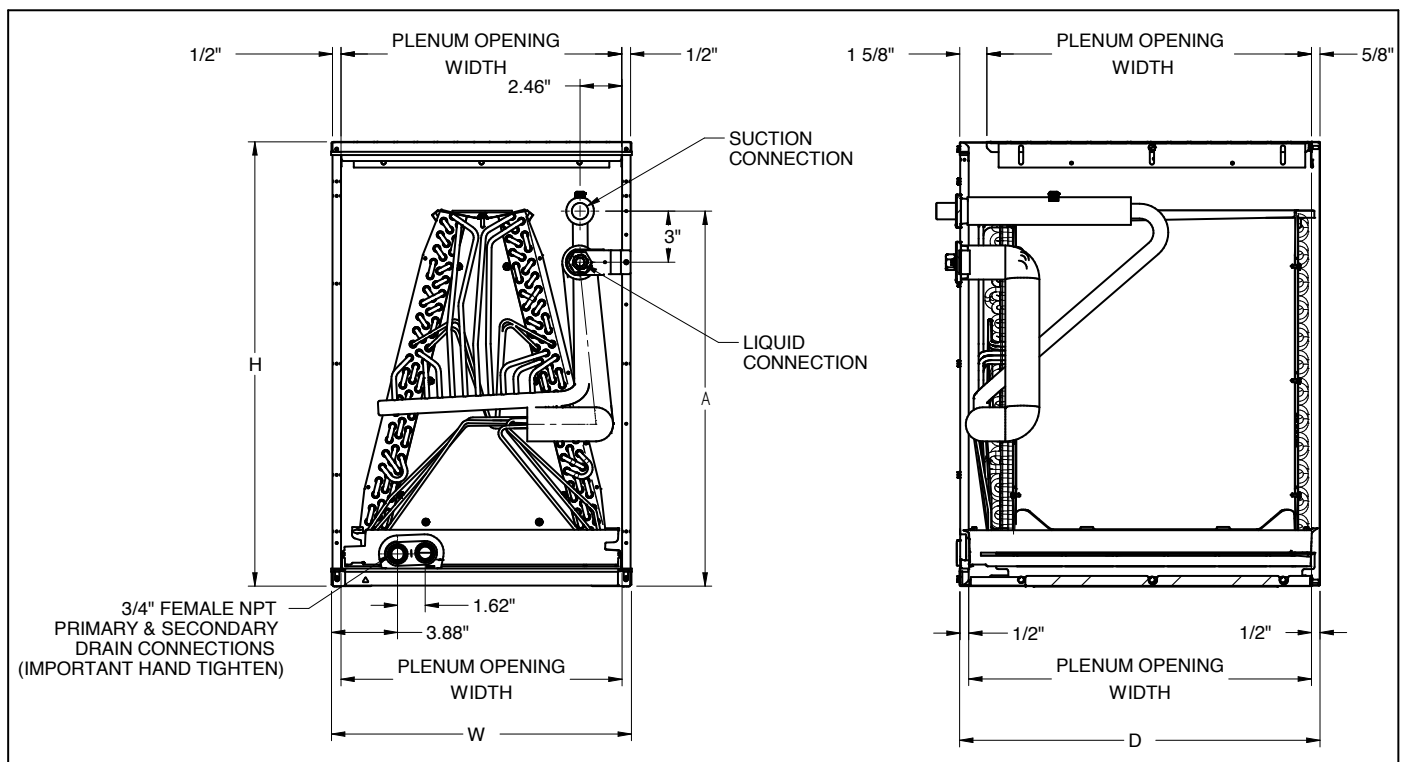


| MODEL | UNIT DIMENSIONS | | | | NOMINAL TONS | CONNECTION | | PISTON SIZE* | SHIP WEIGHT (LBS) |
|-------------|-----------------|-----|-----|-----|--------------|------------|---------|--------------|-------------------|
| | W | D | H | A | | LIQUID | SUCTION | | |
| CAPFA1714A6 | 14" | 21" | 14" | 6" | 1½ | ⅜" | ¾" | 0.051 | 29 |
| CAPFA1714B6 | 17½" | 21" | 14" | 6" | 1½ | ⅜" | ¾" | 0.051 | 33 |
| CAPFA1818A6 | 14" | 21" | 18" | 14" | 1½ | ⅜" | ¾" | 0.055 | 33 |
| CAPFA1818B6 | 17½" | 21" | 18" | 14" | 1½ | ⅜" | ¾" | 0.055 | 38 |
| CAPFA1818C6 | 21" | 21" | 18" | 14" | 1½ | ⅜" | ¾" | 0.055 | 43 |
| CAPFA2318A6 | 14" | 21" | 18" | 14" | 2 | ⅜" | ¾" | 0.057 | 33 |
| CAPFA2318B6 | 17½" | 21" | 18" | 14" | 2 | ⅜" | ¾" | 0.057 | 38 |
| CAPFA2318C6 | 21" | 21" | 18" | 14" | 2 | ⅜" | ¾" | 0.057 | 43 |
| CAPFA2418A6 | 14" | 21" | 18" | 14" | 2 | ⅜" | ¾" | 0.057 | 33 |
| CAPFA2418B6 | 17½" | 21" | 18" | 14" | 2 | ⅜" | ¾" | 0.057 | 38 |
| CAPFA2418C6 | 21" | 21" | 18" | 14" | 2 | ⅜" | ¾" | 0.057 | 43 |
| CAPFA2422A6 | 14" | 21" | 22" | 18" | 2 | ⅜" | ¾" | 0.059 | 41 |
| CAPFA2422B6 | 17½" | 21" | 22" | 18" | 2 | ⅜" | ¾" | 0.059 | 45 |
| CAPFA2422C6 | 21" | 21" | 22" | 18" | 2 | ⅜" | ¾" | 0.059 | 50 |
| CAPFA3022A6 | 14" | 21" | 22" | 18" | 2½ | ⅜" | ¾" | 0.063 | 41 |
| CAPFA3022B6 | 17½" | 21" | 22" | 18" | 2½ | ⅜" | ¾" | 0.063 | 45 |
| CAPFA3022C6 | 21" | 21" | 22" | 18" | 2½ | ⅜" | ¾" | 0.063 | 50 |
| CAPFA3022D6 | 24½" | 21" | 22" | 18" | 2½ | ⅜" | ¾" | 0.063 | 52 |
| CAPFA3626B6 | 17½" | 21" | 26" | 22" | 3 | ⅜" | 7⁄8" | 0.065 | 47 |
| CAPFA3626C6 | 21" | 21" | 26" | 22" | 3 | ⅜" | 7⁄8" | 0.065 | 49 |
| CAPFA3626D6 | 24½" | 21" | 26" | 22" | 3 | ⅜" | 7⁄8" | 0.065 | 56 |

* Shipped with Coil

Note: For a properly matched system and piston sizing information, refer to the piston kit chart of the corresponding outdoor unit.

DIMENSIONS

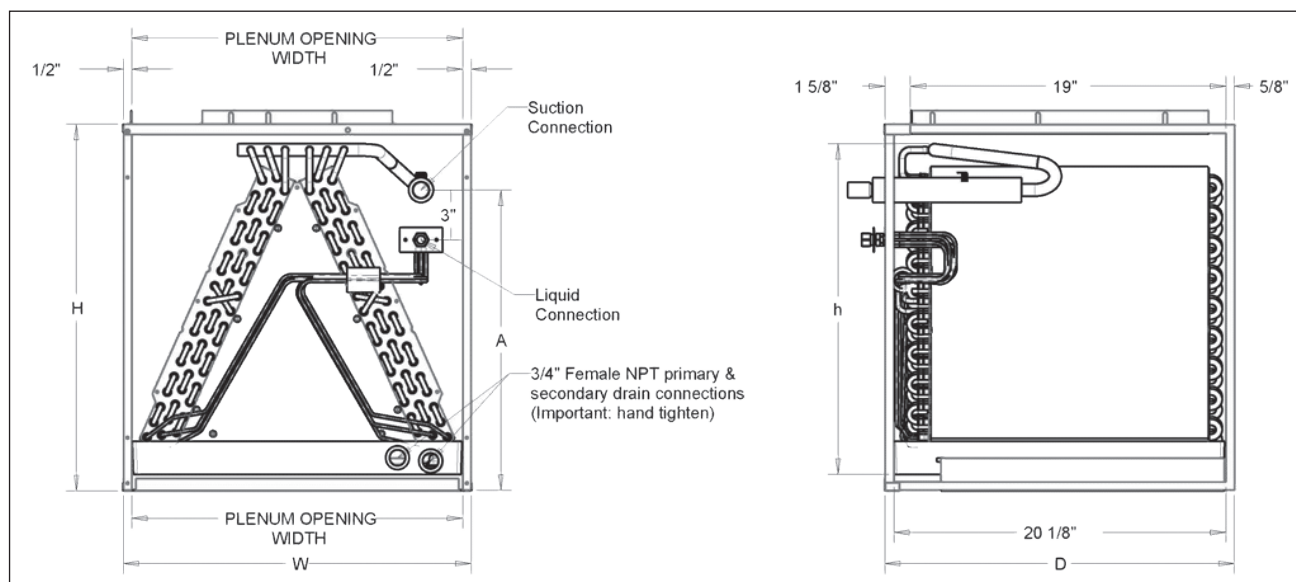




SPECIFICATIONS

| MODEL | UNIT DIMENSIONS | | | NOMINAL TONS | CONNECTION | | SHIP WEIGHT (LBS) |
|------------|-----------------|-----|-----|-----------------|------------|---------|-------------------------|
| | W | D | H | | LIQUID | SUCTION | |
| CAPT3131B4 | 17½" | 21" | 22" | 2½ | ⅜" | ¾" | 46 |
| CAPT3131C4 | 21" | 21" | 22" | 2½ | ⅜" | ¾" | 50 |
| CAPT3743C4 | 21" | 21" | 30" | 3-3½ | ⅜" | ¾" | 63 |
| CAPT3743D4 | 24½" | 21" | 30" | 3-3½ | ⅜" | ¾" | 75 |
| CAPT4961C4 | 21" | 21" | 30" | 4-5 | ⅜" | ¾" | 73 |
| CAPT4961D4 | 24½" | 21" | 30" | 4-5 | ⅜" | ¾" | 76 |

DIMENSIONS



SPECIFICATIONS



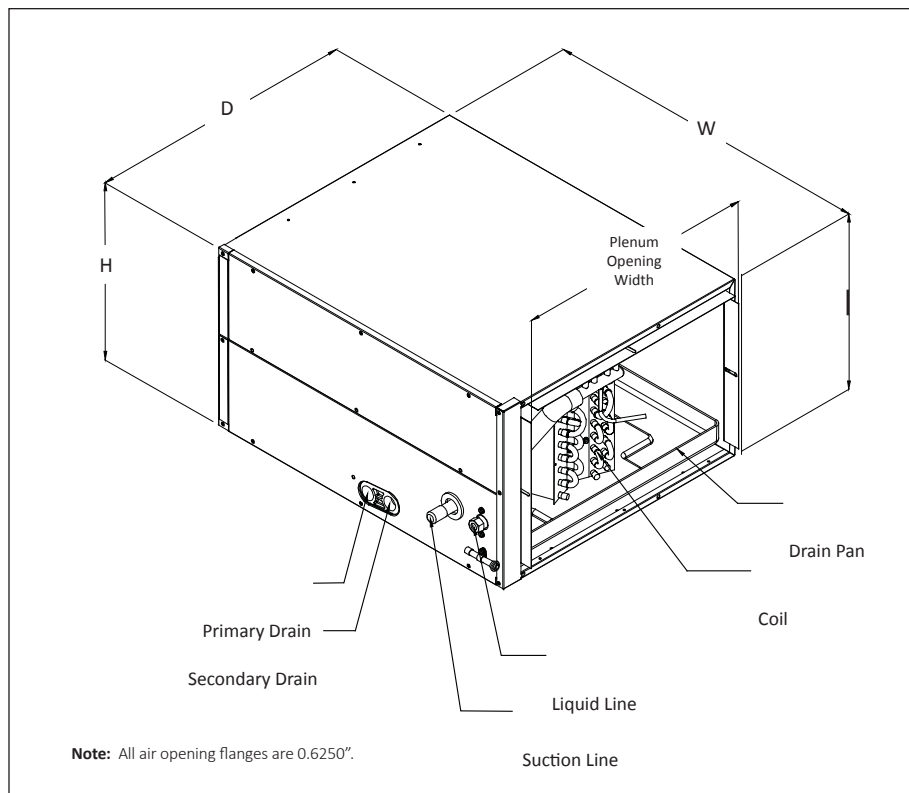
| MODEL | CABINET DIMENSIONS | | | PLENUM | | NOMINAL TONS | CONNECTION | | PISTON SIZE ² | SHIP WEIGHT (LBS) |
|------------|--------------------|-----|--------------------|--------|--------------------|--------------------|-----------------|-----------------|-----------------------------|-------------------------|
| | D | W | H | D | H | | LIQUID | SUCTION | | |
| CHPF1824A6 | 21 $\frac{1}{8}$ " | 26" | 14" | 19" | 13" | 1 $\frac{1}{2}$ -2 | $\frac{3}{8}$ " | $\frac{3}{4}$ " | .059 | 36 |
| CHPF2430B6 | 21 $\frac{1}{8}$ " | 26" | 17 $\frac{1}{2}$ " | 19" | 16 $\frac{1}{2}$ " | 2-2 $\frac{1}{2}$ | $\frac{3}{8}$ " | $\frac{3}{4}$ " | .065 | 55 |
| CHPF3636B6 | 21 $\frac{1}{8}$ " | 26" | 17 $\frac{1}{2}$ " | 19" | 16 $\frac{1}{2}$ " | 3 | $\frac{3}{8}$ " | $\frac{3}{4}$ " | .074 | 50 |
| CHPF3642C6 | 21 $\frac{1}{8}$ " | 26" | 21" | 19" | 20" | 3-3 $\frac{1}{2}$ | $\frac{3}{8}$ " | $\frac{3}{4}$ " | .076 | 63 |
| CHPF3743C6 | 21 $\frac{1}{8}$ " | 26" | 21" | 19" | 20" | 3-3 $\frac{1}{2}$ | $\frac{3}{8}$ " | $\frac{7}{8}$ " | .076 | 63 |
| CHPF4860D6 | 21 $\frac{1}{8}$ " | 26" | 24 $\frac{1}{2}$ " | 19" | 23 $\frac{1}{2}$ " | 4-5 | $\frac{3}{8}$ " | $\frac{7}{8}$ " | .093 | 77 |

¹ (ft²)

² Shipped with Coil

Note: For a properly matched system and piston sizing information, refer to the piston kit chart of the corresponding outdoor unit.

DIMENSIONS



SPECIFICATIONS



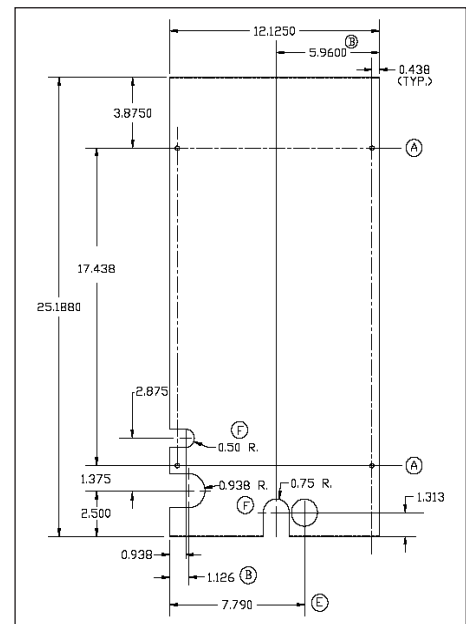
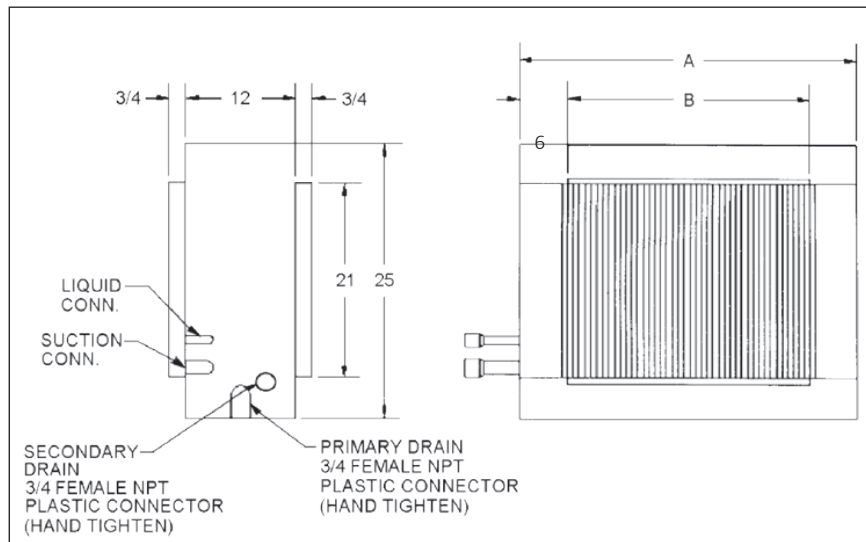
| MODEL | CAPACITY (TONS) | EVAP COIL FACE AREA ¹ | CONNECTION SIZE | | PISTON SIZE ² | SHIP WEIGHT (LBS) |
|------------|--------------------|-------------------------------------|-----------------|---------|-----------------------------|-------------------------|
| | | | LIQUID | SUCTION | | |
| CSCF1824N6 | 1½-2 | 3½ | ¾" | ¾" | .059 | 43 |
| CSCF3036N6 | 2½-3 | 4½ | ¾" | 7⁄8" | .074 | 52.5 |
| CSCF3642N6 | 3-3½ | 5½ | ¾" | 7⁄8" | .078 | 43 |
| CSCF4860N6 | 4-5 | 5½ | ¾" | 7⁄8" | .093 | 60 |

¹ (ft²)² Shipped with Coil

Note: For a properly matched system and piston sizing information, refer to the piston kit chart of the corresponding outdoor unit.

DIMENSIONS

| MODEL | UNIT DIMENSIONS | | | PLENUM OPENING | |
|------------|--------------------|-----|-----|-------------------|-----|
| | D (A) | W | H | D (B) | H |
| CSCF1824N6 | 25½" | 12" | 25" | 16" | 21" |
| CSCF3036N6 | 33½" | 12" | 25" | 24" | 21" |
| CSCF3642N6 | 39½" | 12" | 25" | 30" | 21" |
| CSCF4860N6 | 39½" | 12" | 25" | 30" | 21" |



DETAIL OF ACCESS DOOR

| | SCFM | 400 | 500 | 600 | 700 | 800 | 900 | 1000 | 1100 | 1200 | 1300 | 1400 | 1500 | |
|-------------------------------|------|-------|-------|-------|-------|-------|-------|-------|-------|-------|-------|-------|-------|-----|
| CA*FA1714A6* | Wet | 0.120 | 0.180 | 0.250 | 0.330 | 0.410 | 0.500 | 0.600 | 0.710 | 0.820 | --- | --- | --- | |
| | Dry | 0.100 | 0.150 | 0.200 | 0.270 | 0.340 | 0.420 | 0.520 | 0.610 | 0.720 | --- | --- | --- | |
| CA*FA1714B6* | Wet | 0.100 | 0.150 | 0.210 | 0.280 | 0.340 | 0.420 | 0.500 | 0.580 | 0.660 | --- | --- | --- | |
| | Dry | 0.080 | 0.130 | 0.170 | 0.230 | 0.290 | 0.360 | 0.420 | 0.500 | 0.650 | --- | --- | --- | |
| CA*FA1818A6*/ CA*FA2318A6* | Wet | 0.110 | 0.160 | 0.220 | 0.290 | 0.370 | 0.460 | 0.550 | 0.650 | 0.760 | 0.830 | 0.950 | 1.080 | |
| | Dry | 0.074 | 0.100 | 0.132 | 0.168 | 0.220 | 0.264 | 0.317 | 0.377 | 0.434 | 0.503 | 0.584 | 0.667 | |
| CA*FA1818B6*/ CA*FA2318B6* | Wet | 0.100 | 0.140 | 0.190 | 0.250 | 0.310 | 0.380 | 0.450 | 0.530 | 0.610 | 0.670 | 0.770 | 0.870 | |
| | Dry | 0.066 | 0.087 | 0.115 | 0.144 | 0.175 | 0.218 | 0.260 | 0.301 | 0.347 | 0.401 | 0.460 | 0.521 | |
| CA*FA1818C6/ CA*FA2318C6* | Wet | 0.093 | 0.130 | 0.172 | 0.221 | 0.275 | 0.335 | 0.400 | 0.471 | 0.548 | 0.631 | 0.719 | 0.813 | |
| | Dry | 0.064 | 0.086 | 0.110 | 0.139 | 0.170 | 0.205 | 0.243 | 0.284 | 0.328 | 0.376 | 0.427 | 0.481 | |
| CA*F1824A6* | Wet | 0.071 | 0.099 | 0.142 | 0.183 | 0.230 | 0.280 | 0.331 | 0.389 | --- | --- | --- | --- | |
| | Dry | 0.062 | 0.090 | 0.122 | 0.154 | 0.189 | 0.231 | 0.278 | 0.331 | 0.390 | --- | --- | --- | |
| CA*F1824B6* | Wet | 0.021 | 0.032 | 0.049 | 0.071 | 0.089 | 0.120 | 0.128 | 0.159 | 0.190 | --- | --- | --- | |
| | Dry | 0.011 | 0.022 | 0.029 | 0.041 | 0.052 | 0.069 | 0.078 | 0.101 | 0.120 | --- | --- | --- | |
| CA*F1824C6* | Wet | 0.017 | 0.025 | 0.043 | 0.061 | 0.079 | 0.107 | 0.114 | 0.140 | 0.164 | --- | --- | --- | |
| | Dry | 0.011 | 0.017 | 0.024 | 0.035 | 0.044 | 0.063 | 0.075 | 0.094 | 0.113 | --- | --- | --- | |
| CA*FA1818C6* | Wet | 0.093 | 0.130 | 0.172 | 0.221 | 0.275 | 0.335 | 0.400 | 0.471 | 0.548 | 0.631 | 0.719 | 0.813 | |
| | Dry | 0.064 | 0.086 | 0.110 | 0.139 | 0.170 | 0.205 | 0.243 | 0.284 | 0.328 | 0.376 | 0.427 | 0.481 | |
| | SCFM | 400 | 500 | 600 | 700 | 800 | 900 | 1000 | 1100 | 1200 | 1300 | 1400 | 1500 | |
| CA*FA2422A6* | Wet | 0.091 | 0.128 | 0.181 | 0.240 | 0.304 | 0.374 | 0.454 | 0.541 | 0.635 | 0.733 | 0.837 | 0.958 | |
| | Dry | 0.084 | 0.112 | 0.148 | 0.191 | 0.241 | 0.299 | 0.366 | 0.440 | 0.522 | 0.611 | 0.704 | 0.803 | |
| CA*FA2422B6* | Wet | 0.084 | 0.117 | 0.155 | 0.199 | 0.249 | 0.304 | 0.364 | 0.430 | 0.502 | 0.578 | 0.661 | 0.748 | |
| | Dry | 0.055 | 0.077 | 0.102 | 0.130 | 0.162 | 0.196 | 0.234 | 0.276 | 0.320 | 0.368 | 0.419 | 0.473 | |
| CA*FA2422C6* | Wet | 0.064 | 0.091 | 0.120 | 0.153 | 0.189 | 0.228 | 0.269 | 0.314 | 0.361 | 0.411 | 0.464 | 0.520 | |
| | Dry | 0.055 | 0.074 | 0.095 | 0.119 | 0.146 | 0.175 | 0.207 | 0.242 | 0.280 | 0.320 | 0.363 | 0.408 | |
| | SCFM | 400 | 500 | 600 | 700 | 800 | 900 | 1000 | 1100 | 1200 | 1300 | 1400 | 1500 | |
| CA*FA3022A6* | Wet | 0.091 | 0.128 | 0.181 | 0.240 | 0.304 | 0.374 | 0.454 | 0.541 | 0.635 | 0.733 | 0.837 | 0.958 | |
| | Dry | 0.084 | 0.112 | 0.148 | 0.191 | 0.241 | 0.299 | 0.366 | 0.440 | 0.522 | 0.611 | 0.704 | 0.803 | |
| CA*FA3022B6* | Wet | 0.084 | 0.117 | 0.155 | 0.199 | 0.249 | 0.304 | 0.364 | 0.430 | 0.502 | 0.578 | 0.661 | 0.748 | |
| | Dry | 0.055 | 0.077 | 0.102 | 0.130 | 0.162 | 0.196 | 0.234 | 0.276 | 0.320 | 0.368 | 0.419 | 0.473 | |
| CA*FA3022C6* | Wet | 0.064 | 0.091 | 0.120 | 0.153 | 0.189 | 0.228 | 0.269 | 0.314 | 0.361 | 0.411 | 0.464 | 0.520 | |
| | Dry | 0.055 | 0.074 | 0.095 | 0.119 | 0.146 | 0.175 | 0.207 | 0.242 | 0.280 | 0.320 | 0.363 | 0.408 | |
| CA*FA3022D6* | Wet | 0.064 | 0.089 | 0.118 | 0.149 | 0.184 | 0.222 | 0.262 | 0.306 | 0.353 | 0.402 | 0.455 | 0.511 | |
| | Dry | 0.055 | 0.072 | 0.092 | 0.114 | 0.139 | 0.167 | 0.198 | 0.231 | 0.267 | 0.306 | 0.348 | 0.392 | |
| | SCFM | 400 | 500 | 600 | 700 | 800 | 900 | 1000 | 1100 | 1200 | 1300 | 1400 | 1500 | |
| CA*FA3626B6* | Wet | 0.067 | 0.085 | 0.109 | 0.136 | 0.167 | 0.203 | 0.244 | 0.288 | 0.337 | 0.390 | 0.447 | 0.508 | |
| | Dry | 0.045 | 0.061 | 0.080 | 0.103 | 0.130 | 0.159 | 0.193 | 0.229 | 0.269 | 0.313 | 0.360 | 0.410 | |
| CA*FA3626C6* | Wet | 0.057 | 0.079 | 0.103 | 0.132 | 0.163 | 0.199 | 0.237 | 0.280 | 0.325 | 0.374 | 0.427 | 0.483 | |
| | Dry | 0.041 | 0.056 | 0.072 | 0.091 | 0.112 | 0.134 | 0.159 | 0.185 | 0.214 | 0.245 | 0.277 | 0.312 | |
| CA*FA3626D6* | Wet | 0.055 | 0.076 | 0.099 | 0.124 | 0.152 | 0.182 | 0.215 | 0.250 | 0.288 | 0.328 | 0.370 | 0.415 | |
| | Dry | 0.042 | 0.055 | 0.070 | 0.088 | 0.108 | 0.130 | 0.154 | 0.180 | 0.208 | 0.239 | 0.271 | 0.306 | |
| | SCFM | 600 | 700 | 800 | 900 | 1000 | 1100 | 1200 | 1300 | 1400 | 1500 | | | |
| CA*F3030A6* | Wet | 0.151 | 0.173 | 0.204 | 0.238 | 0.267 | 0.281 | 0.326 | 0.380 | 0.406 | 0.451 | --- | --- | --- |
| | Dry | 0.069 | 0.083 | 0.117 | 0.132 | 0.148 | 0.183 | 0.206 | 0.239 | 0.290 | 0.338 | --- | --- | --- |
| CA*F3030B6* | Wet | 0.090 | 0.120 | 0.150 | 0.180 | 0.210 | 0.240 | 0.280 | 0.330 | 0.370 | 0.420 | --- | --- | --- |
| | Dry | 0.080 | 0.100 | 0.130 | 0.150 | 0.180 | 0.210 | 0.250 | 0.280 | 0.320 | 0.360 | --- | --- | --- |
| CA*F3030C6* | Wet | 0.071 | 0.087 | 0.120 | 0.134 | 0.155 | 0.180 | 0.209 | 0.249 | 0.284 | 0.328 | --- | --- | --- |
| | Dry | 0.050 | 0.067 | 0.098 | 0.113 | 0.135 | 0.169 | 0.189 | 0.213 | 0.245 | 0.275 | --- | --- | --- |
| CA*F3030D6* | Wet | 0.069 | 0.078 | 0.090 | 0.108 | 0.136 | 0.168 | 0.206 | 0.244 | 0.288 | 0.337 | --- | --- | --- |
| | Dry | 0.029 | 0.043 | 0.070 | 0.082 | 0.098 | 0.125 | 0.141 | 0.153 | 0.177 | 0.200 | --- | --- | --- |

| | SCFM | 600 | 700 | 800 | 900 | 1000 | 1100 | 1200 | 1300 | 1400 | 1500 | 1600 | | | | | | |
|--------------|------|-------|-------|-------|-------|-------|-------|-------|-------|-------|-------|-------|-------|-------|-------|-------|-------|-------|
| CA*F3131B26* | Wet | 0.041 | 0.049 | 0.061 | 0.078 | 0.090 | 0.113 | 0.131 | 0.140 | 0.162 | 0.178 | 0.210 | --- | --- | --- | | | |
| | Dry | 0.021 | 0.031 | 0.039 | 0.048 | 0.061 | 0.072 | 0.079 | 0.091 | 0.110 | 0.122 | 0.141 | --- | --- | --- | | | |
| CA*F3131C6* | Wet | 0.035 | 0.036 | 0.038 | 0.051 | 0.059 | 0.073 | 0.087 | 0.094 | 0.110 | 0.125 | 0.145 | --- | --- | --- | | | |
| | Dry | 0.014 | 0.022 | 0.028 | 0.036 | 0.045 | 0.054 | 0.061 | 0.068 | 0.081 | 0.091 | 0.108 | --- | --- | --- | | | |
| | SCFM | 600 | 700 | 800 | 900 | 1000 | 1100 | 1200 | 1300 | 1400 | 1500 | 1600 | 1700 | 1800 | 1900 | 2000 | 2100 | |
| CA*F3137B6* | Wet | 0.090 | 0.110 | 0.140 | 0.170 | 0.200 | 0.230 | 0.270 | 0.300 | 0.350 | 0.390 | 0.440 | 0.5 | 0.550 | 0.620 | 0.670 | 0.740 | --- |
| | Dry | 0.080 | 0.100 | 0.130 | 0.160 | 0.190 | 0.220 | 0.250 | 0.290 | 0.340 | 0.380 | 0.430 | 0.48 | 0.530 | 0.590 | 0.660 | 0.710 | --- |
| | SCFM | 600 | 700 | 800 | 900 | 1000 | 1100 | 1200 | 1300 | 1400 | 1500 | 1600 | 1700 | 1800 | 1900 | 2000 | 2100 | 2200 |
| CA*F3636A6* | Wet | 0.135 | 0.170 | 0.220 | 0.280 | 0.310 | 0.380 | 0.450 | 0.530 | 0.610 | 0.690 | 0.790 | 0.870 | 0.910 | 0.950 | 1.030 | 1.130 | 1.190 |
| | Dry | 0.130 | 0.160 | 0.200 | 0.230 | 0.280 | 0.320 | 0.380 | 0.450 | 0.520 | 0.590 | 0.670 | 0.710 | 0.790 | 0.870 | 0.970 | 1.060 | 1.160 |
| CA*F3636B6* | Wet | 0.115 | 0.135 | 0.170 | 0.180 | 0.220 | 0.260 | 0.300 | 0.350 | 0.400 | 0.460 | 0.520 | 0.570 | 0.600 | 0.660 | 0.720 | 0.790 | 0.850 |
| | Dry | 0.110 | 0.130 | 0.160 | 0.170 | 0.210 | 0.240 | 0.270 | 0.330 | 0.370 | 0.420 | 0.470 | 0.520 | 0.550 | 0.610 | 0.660 | 0.720 | 0.770 |
| CA*F3636C6* | Wet | 0.100 | 0.120 | 0.160 | 0.170 | 0.210 | 0.250 | 0.290 | 0.340 | 0.380 | 0.430 | 0.480 | 0.540 | 0.550 | 0.610 | 0.670 | 0.720 | 0.780 |
| | Dry | 0.090 | 0.110 | 0.130 | 0.140 | 0.160 | 0.180 | 0.220 | 0.250 | 0.280 | 0.320 | 0.350 | 0.370 | 0.410 | 0.450 | 0.490 | 0.530 | 0.570 |
| CA*F3636D6* | Wet | 0.095 | 0.115 | 0.140 | 0.150 | 0.170 | 0.200 | 0.230 | 0.270 | 0.310 | 0.350 | 0.390 | 0.430 | 0.460 | 0.500 | 0.560 | 0.620 | 0.660 |
| | Dry | 0.090 | 0.110 | 0.130 | 0.140 | 0.160 | 0.190 | 0.220 | 0.240 | 0.270 | 0.300 | 0.340 | 0.380 | 0.410 | 0.440 | 0.490 | 0.530 | 0.580 |
| | SCFM | 600 | 700 | 800 | 900 | 1000 | 1100 | 1200 | 1300 | 1400 | 1500 | 1600 | 1700 | 1800 | 1900 | | | |
| CA*F3642C6* | Wet | 0.075 | 0.090 | 0.110 | 0.120 | 0.140 | 0.170 | 0.200 | 0.230 | 0.260 | 0.290 | 0.330 | 0.360 | 0.380 | 0.420 | --- | --- | --- |
| | Dry | 0.070 | 0.080 | 0.100 | 0.110 | 0.130 | 0.150 | 0.170 | 0.200 | 0.230 | 0.250 | 0.280 | 0.310 | 0.330 | 0.370 | --- | --- | --- |
| CA*F3642D6* | Wet | 0.070 | 0.090 | 0.110 | 0.124 | 0.140 | 0.160 | 0.190 | 0.210 | 0.240 | 0.270 | 0.300 | 0.330 | 0.350 | 0.380 | --- | --- | --- |
| | Dry | 0.060 | 0.080 | 0.090 | 0.100 | 0.110 | 0.130 | 0.150 | 0.170 | 0.190 | 0.220 | 0.240 | 0.260 | 0.280 | 0.300 | --- | --- | --- |
| | SCFM | 800 | 900 | 1000 | 1100 | 1200 | 1300 | 1400 | 1500 | 1600 | 1700 | 1800 | 1900 | 2000 | 2100 | | | |
| CA*F3743C6* | Wet | 0.083 | 0.093 | 0.113 | 0.133 | 0.143 | 0.163 | 0.183 | 0.213 | 0.243 | 0.263 | 0.293 | 0.323 | 0.353 | 0.383 | --- | --- | --- |
| | Dry | 0.073 | 0.083 | 0.103 | 0.113 | 0.133 | 0.153 | 0.163 | 0.193 | 0.213 | 0.233 | 0.263 | 0.293 | 0.313 | 0.343 | --- | --- | --- |
| CA*F3743D6* | Wet | 0.074 | 0.080 | 0.089 | 0.107 | 0.120 | 0.129 | 0.138 | 0.169 | 0.188 | 0.209 | 0.229 | 0.251 | 0.273 | 0.279 | --- | --- | --- |
| | Dry | 0.046 | 0.056 | 0.074 | 0.076 | 0.086 | 0.107 | 0.110 | 0.126 | 0.147 | 0.160 | 0.176 | 0.196 | 0.210 | 0.230 | --- | --- | --- |
| | SCFM | 1000 | 1100 | 1200 | 1300 | 1400 | 1500 | 1600 | 1700 | 1800 | 1900 | 2000 | 2100 | 2200 | | | | |
| CA*F4860C6* | Wet | 0.167 | 0.191 | 0.219 | 0.244 | 0.266 | 0.299 | 0.355 | 0.370 | 0.413 | 0.454 | 0.498 | 0.586 | 0.643 | --- | --- | --- | |
| | Dry | 0.160 | 0.177 | 0.194 | 0.206 | 0.246 | 0.264 | 0.264 | 0.265 | 0.290 | 0.309 | 0.364 | 0.389 | 0.604 | --- | --- | --- | |
| CA*F4860D6* | Wet | 0.138 | 0.156 | 0.177 | 0.196 | 0.226 | 0.247 | 0.275 | 0.298 | 0.327 | 0.349 | 0.395 | 0.460 | 0.487 | --- | --- | --- | |
| | Dry | 0.126 | 0.138 | 0.157 | 0.176 | 0.187 | 0.200 | 0.205 | 0.210 | 0.230 | 0.250 | 0.280 | 0.300 | 0.419 | --- | --- | --- | |
| | SCFM | 1000 | 1100 | 1200 | 1300 | 1400 | 1500 | 1600 | 1700 | 1800 | 1900 | 2000 | 2100 | 2200 | | | | |
| CA*F4961C6* | Wet | 0.209 | 0.233 | 0.255 | 0.286 | 0.308 | 0.341 | 0.397 | 0.412 | 0.455 | 0.496 | 0.540 | 0.628 | 0.643 | --- | --- | --- | |
| | Dry | 0.202 | 0.219 | 0.236 | 0.248 | 0.288 | 0.306 | 0.306 | 0.307 | 0.332 | 0.351 | 0.406 | 0.431 | 0.604 | --- | --- | --- | |
| CA*F4961D6* | Wet | 0.140 | 0.158 | 0.179 | 0.198 | 0.228 | 0.249 | 0.277 | 0.300 | 0.329 | 0.351 | 0.397 | 0.462 | 0.487 | --- | --- | --- | |
| | Dry | 0.128 | 0.140 | 0.159 | 0.178 | 0.189 | 0.202 | 0.206 | 0.212 | 0.232 | 0.252 | 0.282 | 0.302 | 0.419 | --- | --- | --- | |

AIR QUANTITY (SCFM) VS. PRESSURE DROP (IN. WC)

CAPT

| | SCFM | 600 | 700 | 800 | 900 | 1000 | 1100 | 1200 | 1300 | 1400 | 1500 | 1600 | 1700 | 1800 | 1900 | 2000 | 2100 | 2200 |
|-------------|------|-------|-------|-------|-------|-------|-------|-------|-------|-------|-------|-------|-------|-------|-------|-------|------|------|
| CAPT3131B4* | Wet | 0.041 | 0.049 | 0.061 | 0.078 | 0.090 | 0.113 | 0.131 | 0.140 | 0.162 | 0.178 | 0.210 | | | | | | |
| | Dry | 0.021 | 0.031 | 0.039 | 0.048 | 0.061 | 0.072 | 0.079 | 0.091 | 0.110 | 0.122 | 0.141 | | | | | | |
| CAPT3131C4* | Wet | 0.035 | 0.036 | 0.038 | 0.051 | 0.059 | 0.073 | 0.087 | 0.094 | 0.110 | 0.125 | 0.145 | | | | | | |
| | Dry | 0.014 | 0.022 | 0.028 | 0.036 | 0.045 | 0.054 | 0.061 | 0.068 | 0.081 | 0.091 | 0.108 | | | | | | |
| CAPT3743C4* | Wet | 0.083 | 0.093 | 0.113 | 0.133 | 0.143 | 0.163 | 0.183 | 0.213 | 0.243 | 0.263 | 0.293 | 0.323 | 0.353 | 0.383 | 0.423 | | |
| | Dry | 0.073 | 0.083 | 0.103 | 0.113 | 0.133 | 0.153 | 0.163 | 0.193 | 0.213 | 0.233 | 0.263 | 0.293 | 0.313 | 0.343 | 0.373 | | |
| CAPT3743D4* | Wet | 0.074 | 0.080 | 0.089 | 0.107 | 0.120 | 0.129 | 0.138 | 0.169 | 0.188 | 0.209 | 0.229 | 0.251 | 0.273 | 0.279 | 0.306 | | |
| | Dry | 0.046 | 0.056 | 0.070 | 0.076 | 0.086 | 0.107 | 0.110 | 0.126 | 0.147 | 0.160 | 0.176 | 0.196 | 0.210 | 0.230 | 0.253 | | |
| CAPT4961C4* | Wet | 0.209 | 0.233 | 0.255 | 0.286 | 0.308 | 0.341 | 0.397 | 0.412 | 0.455 | 0.496 | 0.540 | 0.628 | 0.643 | | | | |
| | Dry | 0.202 | 0.219 | 0.236 | 0.248 | 0.288 | 0.300 | 0.306 | 0.315 | 0.332 | 0.351 | 0.406 | 0.431 | 0.604 | | | | |
| CAPT4961D4* | Wet | 0.140 | 0.158 | 0.179 | 0.198 | 0.228 | 0.249 | 0.277 | 0.300 | 0.329 | 0.351 | 0.397 | 0.462 | 0.487 | | | | |
| | Dry | 0.128 | 0.140 | 0.159 | 0.178 | 0.189 | 0.202 | 0.206 | 0.212 | 0.232 | 0.252 | 0.282 | 0.302 | 0.419 | | | | |

CSCF

| | SCFM | 500 | 600 | 700 | 800 | 900 | 1000 | 1100 | 1200 | 1300 | 1400 | 1500 | 1600 | 1700 | 1800 | 1900 | 2000 | 2100 | 2200 |
|--------------|------|-------|-------|-------|-------|-------|-------|-------|-------|------|------|------|------|------|------|------|------|------|------|
| CSCF1824N6D* | Wet | 0.104 | 0.143 | 0.176 | 0.212 | 0.255 | 0.292 | 0.321 | 0.344 | | | | | | | | | | |
| | Dry | 0.048 | 0.067 | 0.086 | 0.108 | 0.132 | 0.159 | 0.186 | 0.206 | | | | | | | | | | |
| CSCF3036N6D* | Wet | --- | --- | --- | --- | --- | --- | --- | --- | --- | --- | --- | --- | --- | --- | --- | --- | --- | --- |
| | Dry | --- | --- | --- | --- | --- | --- | --- | --- | --- | --- | --- | --- | --- | --- | --- | --- | --- | --- |
| CSCF3642N6D* | Wet | --- | --- | --- | --- | --- | --- | --- | --- | --- | --- | --- | --- | --- | --- | --- | --- | --- | --- |
| | Dry | --- | --- | --- | --- | --- | --- | --- | --- | --- | --- | --- | --- | --- | --- | --- | --- | --- | --- |
| CSCF4860N6D* | Wet | --- | --- | --- | --- | --- | --- | --- | --- | --- | --- | --- | --- | --- | --- | --- | --- | --- | --- |
| | Dry | --- | --- | --- | --- | --- | --- | --- | --- | --- | --- | --- | --- | --- | --- | --- | --- | --- | --- |

** Maximum SCFM = 2146

AIR QUANTITY (SCFM) VS. PRESSURE DROP (IN. WC)

| | SCFM | 600 | 700 | 800 | 900 | 1000 | 1100 | 1200 | 1300 | 1400 | | | | | | |
|-----------------|------|-------|-------|-------|-------|-------|-------|-------|-------|-------|-------|-------|-------|-------|-------|------|
| CHPF 1824A6* | Wet | 0.132 | 0.179 | 0.222 | 0.272 | 0.327 | 0.381 | 0.456 | 0.522 | 0.605 | | | | | | |
| | Dry | 0.126 | 0.165 | 0.206 | 0.249 | 0.302 | 0.354 | 0.414 | 0.478 | 0.563 | | | | | | |
| | SCFM | 600 | 700 | 800 | 900 | 1000 | 1100 | 1200 | 1300 | 1400 | 1500 | 1600 | | | | |
| CHPF 2430B6* | Wet | 0.106 | 0.124 | 0.152 | 0.184 | 0.218 | 0.258 | 0.301 | 0.350 | 0.406 | 0.460 | 0.514 | | | | |
| | Dry | 0.101 | 0.122 | 0.145 | 0.174 | 0.209 | 0.247 | 0.288 | 0.333 | 0.381 | 0.428 | 0.484 | | | | |
| | SCFM | 600 | 700 | 800 | 900 | 1000 | 1100 | 1200 | 1300 | 1400 | 1500 | 1600 | | | | |
| CHPF 3636B6* | Wet | 0.107 | 0.131 | 0.167 | 0.199 | 0.239 | 0.291 | 0.338 | 0.389 | 0.439 | 0.494 | 0.552 | | | | |
| | Dry | 0.102 | 0.126 | 0.152 | 0.184 | 0.220 | 0.259 | 0.303 | 0.349 | 0.401 | 0.458 | 0.516 | | | | |
| | SCFM | 800 | 900 | 1000 | 1100 | 1200 | 1300 | 1400 | 1500 | 1600 | 1700 | 1800 | 1900 | 2000 | 2100 | 2200 |
| CHPF 3642C6* | Wet | 0.083 | 0.103 | 0.126 | 0.151 | 0.178 | 0.208 | 0.240 | 0.274 | 0.310 | 0.346 | 0.383 | --- | --- | --- | --- |
| | Dry | 0.073 | 0.096 | 0.120 | 0.144 | 0.169 | 0.196 | 0.224 | 0.254 | 0.286 | 0.319 | 0.354 | --- | --- | --- | --- |
| | SCFM | 800 | 900 | 1000 | 1100 | 1200 | 1300 | 1400 | 1500 | 1600 | 1700 | 1800 | 1900 | 2000 | 2100 | 2200 |
| CHPF 3743C6* | Wet | 0.133 | 0.153 | 0.176 | 0.201 | 0.228 | 0.258 | 0.290 | 0.324 | 0.360 | 0.396 | 0.433 | --- | --- | --- | --- |
| | Dry | 0.123 | 0.146 | 0.170 | 0.194 | 0.219 | 0.246 | 0.274 | 0.304 | 0.336 | 0.369 | 0.404 | --- | --- | --- | --- |
| | SCFM | 900 | 1000 | 1100 | 1200 | 1300 | 1400 | 1500 | 1600 | 1700 | 1800 | 1900 | 2000 | 2100 | 2200 | |
| CHPF 4860D6* | Wet | 0.111 | 0.131 | 0.151 | 0.171 | 0.191 | 0.211 | 0.231 | 0.261 | 0.291 | 0.321 | 0.361 | 0.391 | 0.431 | 0.471 | |
| | Dry | 0.101 | 0.121 | 0.141 | 0.161 | 0.181 | 0.201 | 0.221 | 0.251 | 0.281 | 0.311 | 0.341 | 0.371 | 0.411 | 0.441 | |

EXPANSION VALVE KITS FOR NON-TXV COILS

| KIT NUMBER | DESCRIPTION | APPLICATION | REFRIGERANT | TONNAGE: OUTDOOR UNIT |
|---------------------|-----------------|-------------|-------------|--------------------------|
| TXV-30 ² | Non-bleed Valve | AC Only | R-410A | 1½- 2½ Ton |
| TXV-42 ² | Non-bleed Valve | AC Only | R-410A | 3- 3½ Ton |
| TXV-48 ² | Non-bleed Valve | AC Only | R-410A | 4 Ton |
| TXV-60 ² | Non-bleed Valve | AC Only | R-410A | 5 Ton |
| TX2N4A | Non-bleed Valve | AC or HP | R-410A | 1½- 2 Ton |
| TX3N4 | Non-bleed Valve | AC or HP | R-410A | 2½- 3 Ton |
| TX5N4 | Non-bleed Valve | AC or HP | R-410A | 3½- 5 Ton |

Note: Condensing units and heat pumps with reciprocating compressors require the use of start-assist components when used in conjunction with an indoor coil using a non-bleed thermal expansion valve refrigerant metering device.

HIGH-TEMP DRAIN PAN KITS

| DRAIN PAN KITS | FURNACE SIZE |
|----------------|---------------|
| HTP-A | 14" furnaces |
| HTP-B | 17½" furnaces |
| HTP-C | 21" furnaces |
| HTP-D | 24½" furnaces |