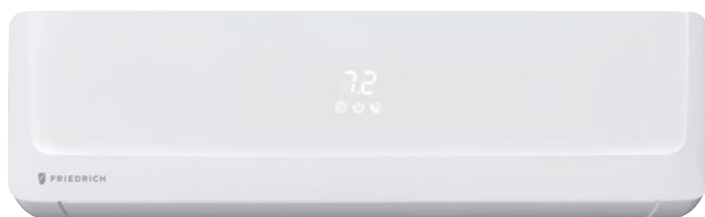


SINGLE ZONE • WALL-MOUNTED HEAT PUMPS

The contractor's line with extensive features to make installation and service faster and easier. Exceptional efficiency and dependable performance.



Wi-Fi available on select models for control anytime, anywhere

- Easy to use FriedrichGo™ app
- Control with smartphone
- Compatible with Amazon Alexa and Google Home



WIRELESS REMOTE WITH THE ABILITY TO CHANGE TO A COOL-ONLY REMOTE



Features for comfort and convenience

- Create customizable, 7-day schedules
- Precision Inverter® technology (variable speed compressor)
- Fast Pro® design for the fastest access for maintenance of any wall-mounted ductless system
- Soft start compressor
- BLDC motor
- Auto Clean indoor coil
- Cooling/Heating/Fan/Auto mode
- LCD remote
- Surge Cool/Heat
- Tangential fan for optimum air flow
- Ultra quiet operation
- Sleep mode
- Auto restart
- Auto changeover
- 24-hour on/off timer
- ENERGY STAR® qualified models
- Easy-to-read temperature display

Operates in extreme conditions

- Low ambient operation down to 5°F (Cooling mode)
- Low ambient operation down to -4°F (Heating mode)
- Low temperature compressor start-up protection



PRO SERIES SPECIFICATIONS

PERFORMANCE RATINGS		115 volt models		230/208 volt models	
SYSTEM MODEL NO.		FPHW091 FPHW09A <i>Wi-Fi</i>	FPHW121 FPHW12A <i>Wi-Fi</i>	FPHW093 FPHW093A <i>Wi-Fi</i>	FPHW123 FPHW123A <i>Wi-Fi</i>
INDOOR MODEL		FPHSW09A1A FPHSW09A1B <i>Wi-Fi</i>	FPHSW12A1A FPHSW12A1B <i>Wi-Fi</i>	FPHFW09A3A FPHFW09A3B <i>Wi-Fi</i>	FPHFW12A3A FPHFW12A3B <i>Wi-Fi</i>
OUTDOOR MODEL		FPHSR09A1A	FPHSR12A1A	FPHSR09A3A	FPHSR12A3A
SPECIFICATIONS					
CAPACITY COOLING (RATED)	Btu	9000	12000	9000	12000
CAPACITY COOLING MIN - MAX	Btu	3600-10000	4000-13500	3600-10000	4000-13500
CAPACITY HEATING (RATED) @ 47°F	Btu	9500	13000	9500	13000
CAPACITY HEATING (RATED) @ 17°F	Btu	5000	7500	5000	7500
CAPACITY HEATING MIN - MAX	Btu	3600-10500	4000-14000	3600-10500	4000-14000
SENSIBLE HEAT RATIO		76%	77%	76%	77%
COP		3.56	3.46	3.88	3.42
HSPF		10.0	10.5	10.7	10.5
SEER		19.5	22.0	22.5	22.0
EER		12.8	13.0	13.7	13.0
ENERGY STAR		YES	YES	YES	YES
MOISTURE REMOVAL	Pts/h	1.9	2.5	1.9	2.5
AIRFLOW (HIGH/MED/LOW/QUIET)	CFM	424/382/323/247	424/382/323/247	424/382/323/247	424/382/323/247
SOUND RATING - INDOOR (HIGH/MED/LOW/QUIET)	dB-A	39/32/29/26	39/32/29/26	39/32/29/26	39/32/29/26
SOUND RATING - OUTDOOR	dB-A	53	53	53	53
OPERATING RANGE (HEATING)	°F	[-4° - 75°]	[-4° - 75°]	[-4° - 75°]	[-4° - 75°]
OPERATING RANGE (COOLING)	°F	[5° - 115°]	[5° - 115°]	[5° - 115°]	[5° - 115°]
EST. YEARLY OPERATING COST	U.S. \$	\$61	\$72	\$53	\$72
ELECTRICAL DATA					
POWER SOURCE	V-Hz-Phase	115-60-1	115-60-1	230/208-60-1	230/208-60-1
MIN. AMPACITY	A	13.5	16.5	10	10
COOLING WATTS	W	700	950	655	960
COOLING AMPS		6.3	8.3	2.9	4.3
HEATING WATTS	W	780	1100	720	1110
HEATING AMPS		7.0	9.7	3.1	5.0
MAX. TD FUSE/BREAKER	A	20	25	15	15
POWER AND COMMUNICATION CABLE	No. x AWG	4 x 14AWG	4 x 14AWG	4 x 14AWG	4 x 14AWG
REFRIGERATION SYSTEM					
REFRIGERANT		R410a	R410a	R410a	R410a
COMPRESSOR TYPE		Rotary	Rotary	Rotary	Rotary
CONNECTIONS		Flare	Flare	Flare	Flare
LIQUID LINE O.D.	in	1/4	1/4	1/4	1/4
SUCTION LINE O.D.	in	3/8	3/8	3/8	3/8
REFRIGERANT CHARGE	oz.	33.5	40.9	33.5	40.9
FACTORY PRECHARGE	ft.	25	25	25	25
MIN. / MAX. LINE LENGTH	ft	9.8-50	9.8-50	9.8-50	9.8-50
MAX. HEIGHT DIFFERENCE	ft	33	33	33	33
DIMENSIONS & WEIGHT					
INDOOR UNIT					
W x H x D	in	33 7/8 x 11 1/8 x 8 1/2		33 7/8 x 11 1/8 x 8 1/2	
NET WEIGHT	lbs	20	20	20	20
SHIPPING WEIGHT	lbs	24.25	24.25	24.25	24.25
OUTDOOR UNIT					
W x H x D	in	28 1/8 x 19 x 9 1/2	31 7/8 x 23 x 11	28 1/8 x 19 x 9 1/2	31 7/8 x 23 x 11
NET WEIGHT	lbs	65	78	59.5	72.5
SHIPPING WEIGHT	lbs	68	82.5	65	79
TOTAL NET WEIGHT	lbs	85	98	79.5	92.5
TOTAL SHIPPING WEIGHT	lbs	92.25	106.75	89.25	103.25

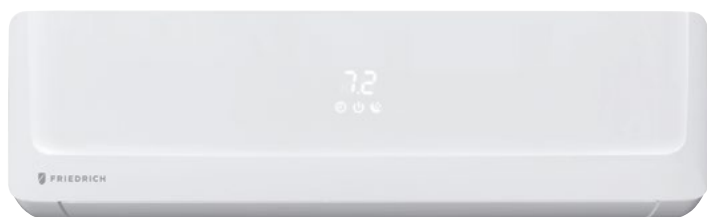
Your operating costs will depend on your utility rates and use. The estimated operating cost is based on a electricity cost of \$.12 per kWh. For more information, visit www.ftc.gov/energy.

Due to continuing research in new energy-saving technology, specifications are subject to change without notice.

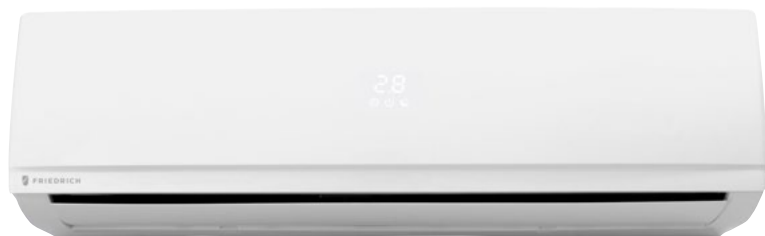


SINGLE ZONE • WALL-MOUNTED HEAT PUMPS

The contractor's line with extensive features to make installation and service faster and easier. Exceptional efficiency and dependable performance.



FPHFW18A3A, FPHFW24A3A, FPHFW18A3B, FPHFW24A3B



FPHSW36A3A, FPHSW36A3B

Wi-Fi available on select models for control anytime, anywhere

- Easy to use FriedrichGo™ app
- Control with smartphone
- Compatible with Amazon Alexa and Google Home



WIRELESS REMOTE WITH THE ABILITY TO CHANGE TO A COOL-ONLY REMOTE



Features for comfort and convenience

- Create customizable, 7-day schedules
- Precision Inverter® technology (variable speed compressor)
- Fast Pro® design for the fastest access for maintenance of any wall-mounted ductless. Feature not on model FPHSW36A3A (B)
- Soft start compressor
- BLDC motor
- Auto Clean indoor coil
- Cooling/Heating/Fan/Auto mode
- LCD remote
- Surge Cool/Heat
- Tangential fan for optimum air flow
- Ultra quiet operation
- Sleep mode
- Auto restart
- Auto changeover
- 24-hour on/off timer
- ENERGY STAR® qualified model
- Easy-to-read temperature display

Operates in extreme conditions

- Low ambient operation down to 5°F (Cooling mode)
- Low ambient operation down to -4°F (Heating mode)
- Low temperature compressor start-up protection



PRO SERIES SPECIFICATIONS

PERFORMANCE RATINGS		230/208 volt models		
SYSTEM MODEL NO.		FPHW183 FPHW183A <i>Wi-Fi</i>	FPHW243 FPHW243A <i>Wi-Fi</i>	FPHW363 FPHW363A <i>Wi-Fi</i>
INDOOR MODEL		FPHFW18A3A FPHFW18A3B <i>Wi-Fi</i>	FPHFW24A3A FPHFW24A3B <i>Wi-Fi</i>	FPHSW36A3A FPHSW36A3B <i>Wi-Fi</i>
OUTDOOR MODEL		FPHSR18A3A	FPHSR24A3A	FPHSR36A3A
SPECIFICATIONS				
CAPACITY COOLING (RATED)	Btu	18000	23500	36000
CAPACITY COOLING MIN - MAX	Btu	6500-19500	8000-26500	12000-38000
CAPACITY HEATING (RATED) @ 47°F	Btu	19000	26000	36000
CAPACITY HEATING (RATED) @ 17°F	Btu	11600	14500	18700
CAPACITY HEATING MIN - MAX	Btu	6500-20000	8000-26500	12000-38000
SENSIBLE HEAT RATIO		80%	76%	79%
COP		3.40	3.05	3.05
HSPF		11.6	10.5	8.8
SEER		23.3	21.0	16.4
EER		13	12.5	8.6
ENERGY STAR		YES	YES	—
MOISTURE REMOVAL	Pts/h	3.2	5.1	6.8
AIRFLOW (HIGH/MED/LOW/QUIET)	CFM	618/565/482/382	735/665/559/441	1030/824/706/588
SOUND RATING - INDOOR (HIGH/MED/LOW/QUIET)	dB-A	45/41/37/34	47/42/36/33	50/45/40/38
SOUND RATING - OUTDOOR	dB-A	55	58	60
OPERATING RANGE (HEATING)	°F	-4° - 75°	-4° - 75°	-4° - 75°
OPERATING RANGE (COOLING)	°F	5° - 115°	5° - 115°	5° - 115°
EST. YEARLY OPERATING COST	U.S. \$	\$124	\$169	\$376
ELECTRICAL DATA				
POWER SOURCE	V-Hz-Phase	230/208-60-1	230/208-60-1	230/208-60-1
MIN. AMPACITY	A	15	20	30
COOLING WATTS	W	1385	1880	4186
COOLING AMPS		6.3	8.3	18.5
HEATING WATTS	W	1638	2500	3459
HEATING AMPS		7.2	11.1	16
MAX. TD FUSE/BREAKER	A	20	30	35
POWER AND COMMUNICATION CABLE	No.x AWG	4 x 14AWG	4 x 14AWG	4 x 14AWG
REFRIGERATION SYSTEM				
REFRIGERANT		R410a	R410a	R410a
COMPRESSOR TYPE		Rotary	Rotary	Rotary
CONNECTIONS		Flare	Flare	Flare
LIQUID LINE O.D.	in	1/4	3/8	3/8
SUCTION LINE O.D.	in	1/2	5/8	3/4
REFRIGERANT CHARGE	oz.	54.7	66.3	81.2
FACTORY PRECHARGE	ft.	25	25	25
MIN. / MAX. LINE LENGTH	ft	9.8-66	9.8-66	9.8-66
MAX. HEIGHT DIFFERENCE	ft	33	33	33
DIMENSIONS & WEIGHT				
INDOOR UNIT				
W x H x D	in	45 1/8 x 13 1/8 x 10		50 5/8 x 13 5/8 x 10 1/4
NET WEIGHT	lbs	33	33	40
SHIPPING WEIGHT	lbs	38.5	38.5	48
OUTDOOR UNIT				
W x H x D	in	33 7/8 x 25 1/2 x 12 1/8	34 7/8 x 31 1/4 x 14 3/8	34 7/8 x 31 1/4 x 14 3/8
NET WEIGHT	lbs	99	123.5	141
SHIPPING WEIGHT	lbs	108	141	152
TOTAL NET WEIGHT	lbs	132	156.5	181
TOTAL SHIPPING WEIGHT	lbs	146.5	179.5	200

Your operating costs will depend on your utility rates and use. The estimated operating cost is based on a electricity cost of \$.12 per kWh. For more information, visit www.ftc.gov/energy.

Due to continuing research in new energy-saving technology, specifications are subject to change without notice.



SINGLE ZONE • CEILING CASSETTE HEAT PUMPS

Compact cassette units install in a drop ceiling and mount flush to the ceiling for a clean look and efficient installation.



Wi-Fi available on select models for control anytime, anywhere

- Easy to use FriedrichGo™ app
- Control with smartphone
- Compatible with Amazon Alexa and Google Home



WIRELESS REMOTE
WITH THE ABILITY
TO CHANGE TO A
COOL-ONLY REMOTE

Features for comfort and convenience

- Create customizable, 7-day schedules
- 24-hour on/off timer
- Precision Inverter® technology (variable speed compressor)
- Soft start compressor
- Natural air flow
- 4-way cooling
- Surge Cool/Heat
- Cooling/Heating/Fan mode
- Dry mode
- Sleep mode
- Independent vane control
- 3 fan speeds
- Ultra-quiet turbo fan
- Evaporator frost control
- Auto restart
- Auto changeover
- DiamonGold Advanced Corrosion Protection™
- Clean, modern look
- Flexible installation
- ENERGY STAR® qualified models
- Precise air distribution

Operates in extreme conditions

- Built-in low ambient, down to 5°F on 9k/12k/18k models, down to -4°F on 24k/36k models (Cooling mode)
- Low ambient operation down to -4°F (Heating mode)

NOTE: Cassette grilles are sold separately.



Wi-Fi

DIAMONBLUE
Advanced Corrosion Protection®

**PRECISION
INVERTER®**



PRO SERIES SPECIFICATIONS

PERFORMANCE RATINGS		Single Zone Cassette - Heat Pumps				
SYSTEM MODEL NO.		FPHC093 FPHC093A <i>Wi-Fi</i>	FPHC123 FPHC123A <i>Wi-Fi</i>	FPHC183 FPHC183A <i>Wi-Fi</i>	FPHC243 FPHC243A <i>Wi-Fi</i>	FPHC363A <i>Wi-Fi</i>
INDOOR MODEL		FPHFC09A3A FPHFC09A3B <i>Wi-Fi</i>	FPHFC12A3A FPHFC12A3B <i>Wi-Fi</i>	FPHFC18A3A FPHFC18A3B <i>Wi-Fi</i>	FPHFC24A3A FPHFC24A3B <i>Wi-Fi</i>	FPHSC36A3B <i>Wi-Fi</i>
OUTDOOR MODEL		FPHFR09A3A	FPHFR12A3A	FPHFR18A3A	FPHFR24A3A	FPHFR36A3A
SPECIFICATIONS						
CAPACITY COOLING (RATED)	Btu	9000	12000	18000	24000	36000
CAPACITY COOLING (MIN-MAX)	Btu	4850-11600	5800-13100	8000-19200	8600-25200	12600-36800
CAPACITY HEATING @47°F (RATED)	Btu	9000	12000	11942	24000	42600
CAPACITY HEATING @17°F (RATED)	Btu	5120	6800	7500	19600	27300
CAPACITY HEATING (MIN-MAX)	Btu	4340-12280	6000-14400	7000-21200	7600-28400	15000-42600
SENSIBLE HEAT RATIO		76%	77%	76%	76%	79%
COP (@47°F)	.	4.00	3.80	3.90	3.61	3.31
HSPF		10.00	10.00	10.00	10.00	10.50
SEER		18	19	19	19	19.5
EER		12.5	12.5	12.7	12.5	10.6
ENERGY STAR *		YES	YES	YES	YES	—
MOISTURE REMOVAL	Pts/h	2	3	5	5.1	7.61
AIRFLOW (LOW, MED, HIGH)	CFM	235/285/309	235/294/353	380/457/588	400/530/647	676/794/941
SOUND RATING - INDOOR H/M/L	dB(A)	40/33/28	35/32/29	38/35/33	43/39/36	49/43/39
SOUND RATING - OUTDOOR	dB(A)	52	54	68	54	61
OPERATING RANGE (COOLING)	°FDB	5-118	5-118	5-118	-4-118	-4-118
OPERATING RANGE (HEATING)	°FWB	-4-75	-4-75	-4-75	-4-75	-4-75
EST. YEARLY OPERATING COST	\$	53	72	124	169	376
ELECTRICAL DATA						
POWER SOURCE	V	230/208-60-1	230/208-60-1	230/208-60-1	230/208-60-1	230/208-60-1
MINIMUM AMPACITY	A	23	23	23	23	27
COOLING WATTS	W	720	960	1420	1920	3380
COOLING AMPS		3.6	4.3	6.3	8.6	14.6
HEATING AMPS		3.5	4.1	6.5	8.7	14.0
MAX. TD FUSE/BREAKER	A	20	30	30	30	50
POWER AND COMMUNICATION CABLE No. x AWG		4 x 14AWG	4 x 14AWG	4 x 14AWG	4 x 14AWG	4 x 14AWG
REFRIGERATION SYSTEM						
REFRIGERANT		R410a	R410a	R410a	R410a	R410a
COMPRESSOR TYPE		Rotary	Rotary	Rotary	Rotary	Rotary
CONNECTIONS		Flare	Flare	Flare	Flare	Flare
LIQUID LINE O.D.	in	1/4	1/4	1/4	3/8	3/8
SUCTION LINE O.D.	in	3/8	3/8	1/2	5/8	3/4
FACTORY PRECHARGE	ft	25	25	25	25	25
REFRIGERANT CHARGE	oz	33.5	45.9	56.5	75	111
MIN./MAX. LINE LENGTH	ft	10-82	10-82	10-98	25-164	25-164
MAX. HEIGHT DIFFERENCE	ft	33	49	49	98	98
DIMENSIONS & WEIGHT						
INDOOR UNIT						
W X H X D	in	22 1/2 x 8 1/2 x 22 1/2	22 1/2 x 8 1/2 x 22 1/2	33 x 14 1/2 x 33	33 x 14 1/2 x 33	33 x 16 1/2 x 33
NET WEIGHT	lbs	32	33	56	59.5	70.5
SHIPPING WEIGHT	lbs	38.5	39.7	73.9	79.5	90.4
INDOOR UNIT GRILLE** W X H X D	in	24-1/2 x 24-1/2 x 10	24-1/2 x 24-1/2 x 10	35-7/8 x 35-7/8 x 13 1/2	35-7/8 x 35-7/8 x 13 1/2	35-7/8 x 35-7/8 x 13 1/2
INDOOR UNIT GRILLE** NET WEIGHT	lbs	13.2	13.2	22.0	22.0	22.0
INDOOR GRILLE PART NUMBER		FPCG0912		FPCG182436		
OUTDOOR UNIT						
W X H X D	in	37 x 25 x 16 1/2	37 x 25 x 16 1/2	39 x 17 3/4 x 28 3/4	43 x 36 1/4 x 18 1/8	43 x 36 1/4 x 18 1/8
NET WEIGHT	lbs	75	75	108	155	192
SHIPPING WEIGHT	lbs	85	82	117	166	215
TOTAL NET WEIGHT	lbs	107	108	164	214.5	262.5
TOTAL SHIPPING WEIGHT	lbs	123.5	121	191	245.5	305.4

Your operating costs will depend on your utility rates and use. The estimated operating cost is based on a electricity cost of \$.12 per kWh. For more information, visit www.ftc.gov/energy. *System meets ENERGY STAR® published minimums. **Models require grille. Sold separately.

Due to continuing research in new energy-saving technology, specifications are subject to change without notice.

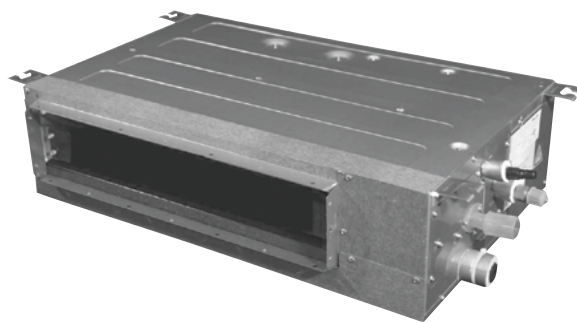


SINGLE ZONE • THE INSIDER® CONCEALED DUCTED HEAT PUMPS

Indoor unit is installed in the ceiling or furr down, totally concealed, for unobtrusive installation.

Features

- Precision Inverter® technology (variable speed compressor)
- Soft start compressor
- BLDC motor
- Cooling/Heating/Fan mode
- Dry mode
- 3 fan speeds
- Auto restart
- Auto changeover
- DiamonGold Advanced Corrosion Protection™
- Control lock function on controller
- External Static Pressure Range 0-.40



Operates in extreme conditions

- Built-in low ambient, down to 5°F on 9k/12k/18k models, down to -4°F on 24k/36k models (Cooling mode)
- Low ambient operation down to -4°F (Heating mode)



PRO SERIES SPECIFICATIONS

PERFORMANCE RATINGS		Single Zone - The Insider™ Concealed Ducted Heat Pumps				
SYSTEM MODEL NO.		FPHD093	FPHD123	FPHD183	FPHD243	FPHD363
INDOOR MODEL		FPHFD09A3A	FPHFD12A3A	FPHFD18A3A	FPHFD24A3A	FPHSD36A3A
OUTDOOR MODEL		FPHFR09A3A	FPHFR12A3A	FPHFR18A3A	FPHFR24A3A	FPHFR36A3A
SPECIFICATIONS						
CAPACITY COOLING (RATED)	Btu	9000	12000	18000	24000	36000
CAPACITY COOLING (MIN-MAX)	Btu	4850-11600	5800-13100	8000-19200	8600-25200	12600-36800
CAPACITY HEATING @47°F (RATED)	Btu	9000	12000	18000	24000	36000
CAPACITY HEATING @17°F (RATED)	Btu	6200	8200	14700	19600	22000
CAPACITY HEATING (MIN-MAX)	Btu	4340-12280	6000-14400	7000-21200	7600-28400	15000-42600
SENSIBLE HEAT RATIO		76%	76%	76%	76%	76%
SEER		17	19	19	18	18
EER		12	11	12.2	12.5	10.9
COP (@47°F)		3.2	3.2	3.4	3.6	3
HSPF		10.00	10.00	10.00	10.00	9.50
ENERGY STAR		—	—	—	—	—
MOISTURE REMOVAL	Pts/h	2	3	5	5.1	7.61
AIRFLOW (LOW, MED, HIGH)	CFM	235/285/309	235/285/338	370/440/529	501/574/647	618/735/853
SOUND RATING - INDOOR H/M/L	dB(A)	29/27/26	36/33/30	38/35/33	38/36/34	49/43/39
SOUND RATING - OUTDOOR	dB(A)	52	54	68	54	61
OPERATING RANGE (COOLING)	°F	5-118	5-118	5-118	-4-118	-4-118
OPERATING RANGE (HEATING)	°F	-4-75	-4-75	-4-75	-4-75	-4-75
EST. YEARLY OPERATING COST	\$	53	72	124	169	376
ELECTRICAL DATA						
POWER SOURCE		230/208-60-1	230/208-60-1	230/208-60-1	230/208-60-1	230/208-60-1
MINIMUM AMPACITY	A	23.0	23.0	23.0	23.0	4.6
COOLING WATTS	W	750	1091	1610	2200	3300
COOLING AMPS		3.7	4.8	7.0	8.6	14.4
HEATING AMPS		4.1	4.8	7.3	8.7	15.2
MAX. TD FUSE/BREAKER	A	20	30	30	30	50
POWER AND COMMUNICATION CABLE	No. x AWG	4 x 14AWG	4 x 14AWG	4 x 14AWG	4 x 14AWG	4 x 14AWG
REFRIGERATION SYSTEM						
REFRIGERANT		R410a	R410a	R410a	R410a	R410a
COMPRESSOR TYPE		Rotary	Rotary	Rotary	Rotary	Rotary
CONNECTIONS		Flare	Flare	Flare	Flare	Flare
LIQUID LINE O.D.	in	1/4	1/4	1/4	3/8	3/8
SUCTION LINE O.D.	in	3/8	3/8	1/2	5/8	3/4
FACTORY PRECHARGE	ft	25	25	25	25	25
REFRIGERANT CHARGE	oz	33.5	45.9	56.5	75.3	111
MIN./MAX. LINE LENGTH	ft	10-82	10-82	10-98	25-164	25-164
MAX. HEIGHT DIFFERENCE	ft	33	49	49	98	98
DIMENSIONS & WEIGHT						
INDOOR UNIT						
W X H X D	in	42 1/2 x 11 1/4 x 22 1/4	42-1/2 x 22-1/4 x 11-1/4	53 x 22 1/4 x 11	46 x 34 1/4 x 13 3/8	61 x 16-1/8 x 37
NET WEIGHT	lbs	39.7	39.7	49.6	70.5	112.5
SHIPPING WEIGHT	lbs	46.3	47.4	56.2	81.6	132.4
OUTDOOR UNIT						
W X H X D	in	37 x 25 x 16 1/2	37 x 25 x 16 1/2	39 x 17 3/4 x 28 3/4	43 x 36 1/4 x 18 1/8	43 x 36 1/4 x 18 1/8
NET WEIGHT	lbs	75	75	108	155	192
SHIPPING WEIGHT	lbs	85	82	117	166	215
TOTAL NET WEIGHT	lbs	107	108	108	214.5	262.5
TOTAL SHIPPING WEIGHT	lbs	123.5	121	158	245.5	305.4

Your operating costs will depend on your utility rates and use. The estimated operating cost is based on a electricity cost of \$.12 per kWh. For more information, visit www.ftc.gov/energy.

Due to continuing research in new energy-saving technology, specifications are subject to change without notice.



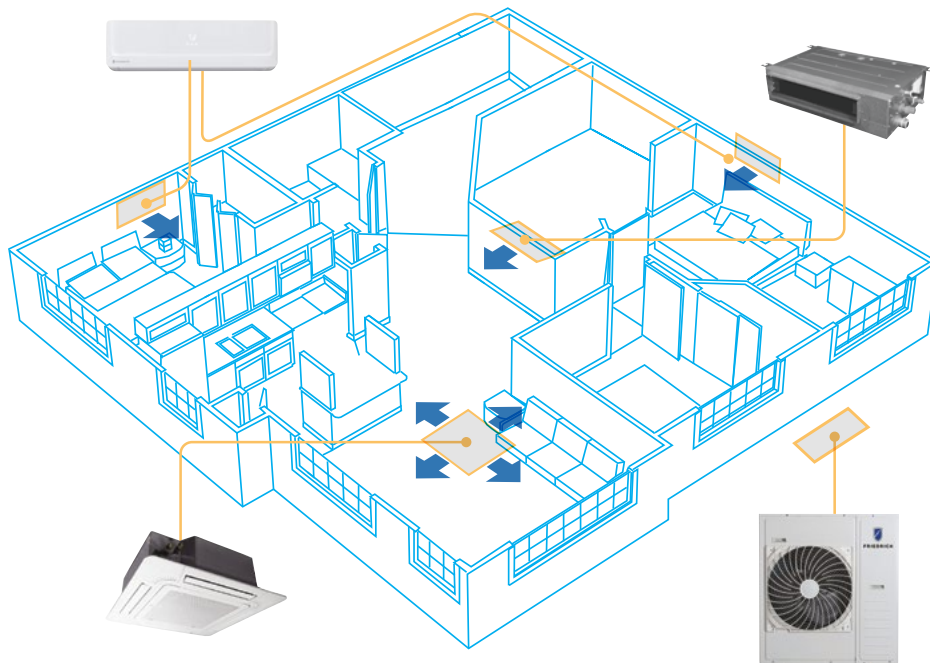
Friedrich multi zone systems utilize wall-mounted, ceiling cassette and concealed ducted models in up to 4 zones

MULTI ZONE SYSTEMS PROVIDE TOTAL INSTALLATION FLEXIBILITY.

Zone cooling and heating provides unmatched customized comfort and energy savings

Occupants have the ability to set the temperature of each zone to their preferred comfort level*, or turn off units in unoccupied rooms without affecting other zones.

That's the beauty and efficiency of a Friedrich Ductless Multi Zone System.

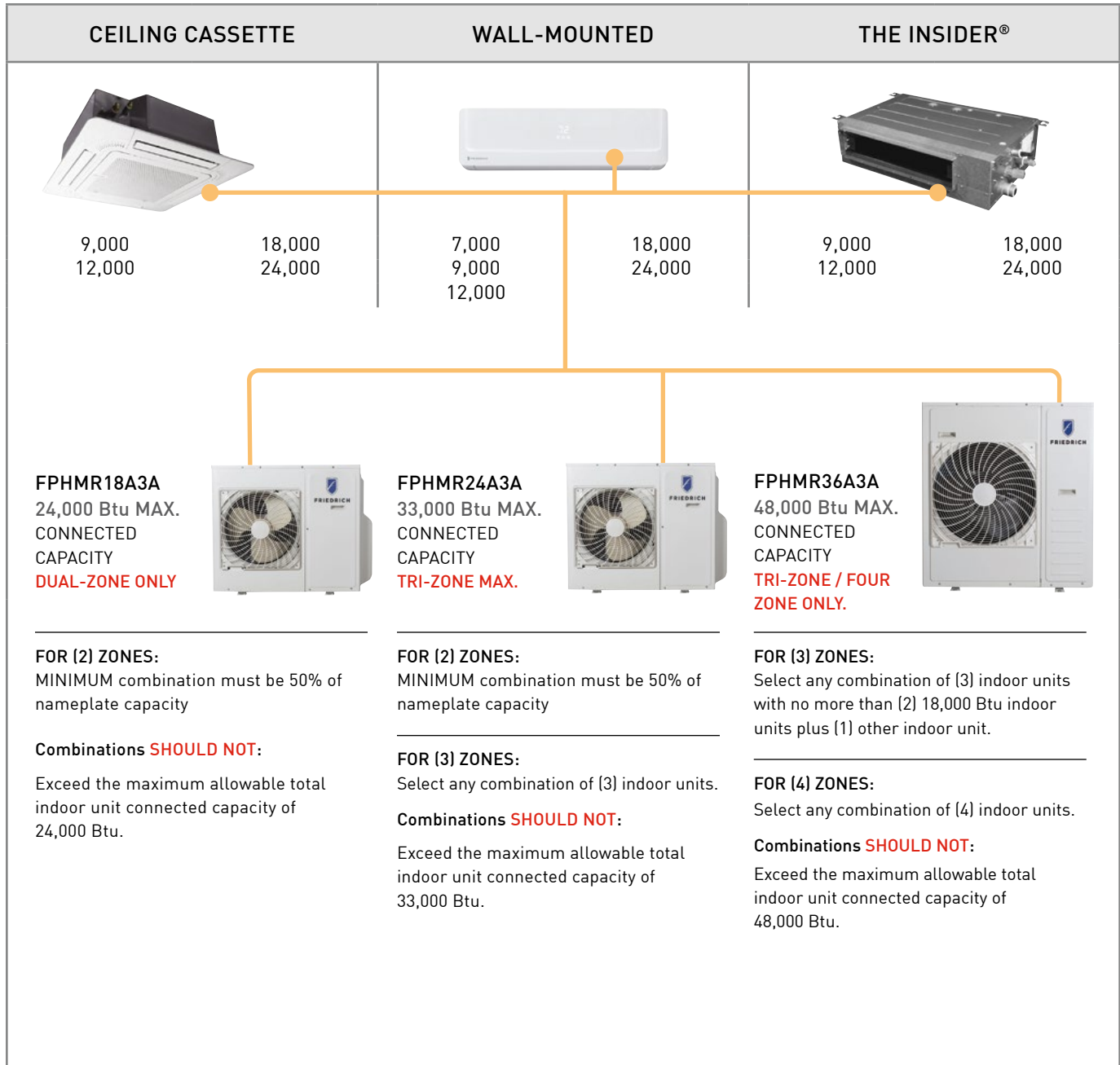


MULTI ZONE CONFIGURATION, AHRI RATINGS

Friedrich Model	AHRI Reference Number	Indoor Type	System Capacity	EER	SEER	High Heat 47 °F	Low Heat 17°F
FPHMR18A3A	205150429	Non-ducted Indoor Units	18000	12.50	22.00	18000	12200
	205150428	Ducted Indoor Units	18000	11.50	19.00	18000	12200
	205150430	Mixed Ducted and Non-ducted Indoor Units	18000	12.00	20.50	18000	12200
FPHMR24A3A	204101246	Non-ducted Indoor Units	24000	12.50	22.00	24000	15400
	204005731	Ducted Indoor Units	24000	12.10	21.00	24000	15400
	203999079	Mixed Ducted and Non-ducted Indoor Units	24000	12.30	21.50	24000	15400
FPHMR36A3A	204101247	Non-ducted Indoor Units	32000	12.50	21.0	36000	23200
	203996910	Ducted Indoor Units	32000	12.00	19.50	36000	22600
	203999080	Mixed Ducted and Non-ducted Indoor Units	32000	12.25	20.25	36000	22600

MULTI ZONE CONFIGURATION GUIDELINES

Select a combination of indoor units that does not exceed the maximum connected capacity, and is within the recommended parameters:

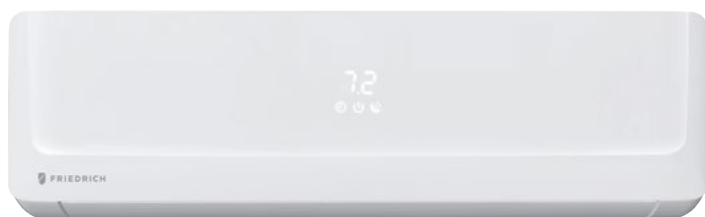


WORKSHEET EXAMPLE

MAX. CONDENSER CAPACITY	50% OF NAMEPLATE CAPACITY	ZONE 1 Unit Btu	ZONE 2 Unit Btu	ZONE 3 Unit Btu	ZONE 4 Unit Btu
24,000	12,000			DUAL ZONE ONLY	
33,000	17,500				TRI-ZONE MAX.
48,000	24,000				

MULTI ZONE HEAT PUMP SYSTEMS

The contractor's line with extensive features to make installation and service faster and easier. Exceptional efficiency and dependable performance.



Wi-Fi available on select models for control anytime, anywhere

- Easy to use FriedrichGo™ app
- Control with smartphone
- Compatible with Amazon Alexa and Google Home



WIRELESS REMOTE WITH THE ABILITY TO CHANGE TO A COOL-ONLY REMOTE

Features for comfort and convenience

- Create customizable, 7-day schedules
- Precision Inverter® technology (variable speed compressor)
- Fast Pro® design for the fastest access for maintenance of any wall-mounted ductless system
- Soft start compressor
- BLDC motor
- Auto Clean indoor coil
- Cooling/Heating/Fan/Auto mode
- Surge Cool/Heat
- Natural air flow
- Ultra quiet operation
- Sleep mode
- Auto restart
- Auto changeover
- 24-hour on/off timer
- ENERGY STAR® qualified model
- Hidden display (only visible during operation)



FPHMR18A3A , FPHMR24A3A



FPHMR36A3A

Operates in extreme conditions

- Low ambient operation down to 14°F (Cooling mode)
- Low ambient operation down to -13°F (Heating mode)
- Low temperature compressor start-up protection



PRO SERIES SPECIFICATIONS

PERFORMANCE RATINGS		Multi Zone Wall-Mounted - Heat Pumps				
		7k	9k	12k	18k	24k
INDOOR MODEL		FPHMW07A3A FPHMW07A3B <i>Wi-Fi</i>	FPHFW09A3A FPHFW09A3B <i>Wi-Fi</i>	FPHFW12A3A FPHFW12A3B <i>Wi-Fi</i>	FPHFW18A3A FPHFW18A3B <i>Wi-Fi</i>	FPHFW24A3A FPHFW24A3B <i>Wi-Fi</i>
SPECIFICATIONS						
CAPACITY COOLING (RATED)	Btu	7000	9000	12000	18000	24000
CAPACITY HEATING (RATED)	Btu	8500	9500	13000	19000	24200
MOISTURE REMOVAL	Pts/h	2.5	2.5	3.2	4.2	5.3
AIRFLOW	CFM	424/382/323/247	424/382/323/247	424/382/323/247	618/565/482/382	735/665/559/441
SOUND RATING (HIGH/MED/LOW)	dB-A	38/32/29	38/32/29	39/32/29	45/41/37	48/45/40
ELECTRICAL DATA						
POWER SOURCE	V-Hz-Phase	230/208~60-1	230/208~60-1	230/208~60-1	230/208~60-1	230/208~60-1
REFRIGERATION SYSTEM						
CONNECTIONS		Flare	Flare	Flare	Flare	Flare
LIQUID LINE O.D.	in	1/4	1/4	1/4	1/4	3/8
SUCTION LINE O.D.	in	3/8	3/8	3/8	1/2	5/8
DIMENSIONS & WEIGHT						
W x H x D	in	37 3/8" x 10 3/4" x 8 1/8"			48" x 12 5/8" x 9 1/4"	48" x 12 5/8" x 9 1/4"
NET WEIGHT	lbs	18.7	18.7	18.7	32	32
SHIPPING WEIGHT	lbs	24.3	24.3	24.3	37.5	37.5

PERFORMANCE RATINGS		Multi Outdoor		
		18k	24k	36k
OUTDOOR MODEL		FPHMR18A3A	FPHMR24A3A	FPHMR36A3A
SPECIFICATIONS				
POWER SOURCE		208~230/60/1	208~230/60/1	208~230/60/1
EST. YEARLY OPERATING COST	\$	\$90	\$172	\$259
RUNNING CURRENT COOLING RATED	A	6.5	8.7	11
RUNNING CURRENT HEATING RATED	A	7.3	8.7	13
POWER INPUT COOLING MIN. - RATED - MAX.	W	1440 [510~2610]	1920 [420~2640]	2520 [700~5000]
POWER INPUT HEATING MIN. - RATED - MAX.	W	1530 [450~3510]	1920 [420~4020]	3060 [600~6000]
POWER AND COMMUNICATION CABLE	No. x AWG	4 x 14AWG	4 x 14AWG	4 x 14AWG
DIMENSIONS W x H x D	in	33 7/8 x 26 3/8 x 12 1/4	37 3/8 x 33 x 13 3/8	37 3/8 x 41 3/8 x 13 3/8
NET WEIGHT	lbs	108	159	186
SHIPPING WEIGHT	lbs	119	170	216
REFRIGERATION SYSTEM				
REFRIGERANT		R410A	R410A	R410A
FACTORY PRECHARGE	oz	63	81.13	105.82
LIQUID LINE O.D.	in	1/4	1/4	1/4
SUCTION LINE O.D.	in	3/8	3/8	3/8
MIN./MAX. LINE LENGTH (EACH)	ft	82	66	66
MIN./MAX. LINE LENGTH (TOTAL)	ft	164	197	197
MAX. HEIGHT DIFFERENCE	ft	49	49	49
SOUND PRESSURE LEVEL COOLING	A	55	59	59
SOUND PRESSURE LEVEL HEATING	A	55	59	59
OPERATING RANGE COOLING	°F DB	14~115	14~115	14~115
OPERATING RANGE HEATING	°F WB	-13~75	-13~75	-13~75
MINIMUM AMPACITY	A	30A	30A	30A
MAX. TD FUSE/BREAKER	A	45A	45A	45A

Your operating costs will depend on your utility rates and use. The estimated operating cost is based on a electricity cost of \$.12 per kWh. For more information, visit www.ftc.gov/energy.

Due to continuing research in new energy-saving technology, specifications are subject to change without notice.



MULTI ZONE • CEILING CASSETTE HEAT PUMPS

Compact cassette units install in a drop ceiling and mount flush to the ceiling for a clean look and efficient installation.



Wi-Fi available on select models for control anytime, anywhere

- Easy to use FriedrichGo™ app
- Control with smartphone
- Compatible with Amazon Alexa and Google Home

Features for comfort and convenience

- Create customizable, 7-day schedules
- 24-hour on/off timer
- Precision Inverter® technology (variable speed compressor)
- Soft start compressor
- Natural air flow
- 4-way cooling
- Surge Cool/Heat
- Cooling/Heating/Fan mode
- Dry mode
- Sleep mode
- Independent vane control
- 3 fan speeds
- Ultra-quiet turbo fan
- Evaporator frost control
- Auto restart
- Auto changeover
- DiamonBlue Advanced Corrosion Protection®
- Clean, modern look
- Flexible installation
- ENERGY STAR® qualified models
- Precise air distribution

Operates in extreme conditions

- Built-in low ambient standard, down to 14°F [Cooling mode]
- Low ambient operation down to -13°F [Heating mode]
- Low temperature compressor start-up protection

NOTE: Cassette grilles are sold separately.



FPHMR18A3A , FPHMR24A3A



FPHMR36A3A



PRO SERIES SPECIFICATIONS

PERFORMANCE RATINGS		Multi Zone Cassette - Heat Pumps			
		9k	12k	18k	24k
INDOOR MODEL		FPHFC09A3A FPHFC09A3B <i>Wi-Fi</i>	FPHFC12A3A FPHFC12A3B <i>Wi-Fi</i>	FPHFC18A3A FPHFC18A3B <i>Wi-Fi</i>	FPHFC24A3A FPHFC24A3B <i>Wi-Fi</i>
SPECIFICATIONS					
CAPACITY COOLING (RATED)	Btu	9000	12000	18000	24000
CAPACITY HEATING (RATED)	Btu	10200	13500	20400	27000
MOISTURE REMOVAL	Pts/h	1.9	2.5	3.2	5.0
AIRFLOW (HIGH)	CFM	306	471	559	1100
SOUND RATING (MAX.-MIN.)	dB-A	40/28	40/28	40/28	40/28
ELECTRICAL DATA					
POWER SOURCE	V-Hz-Phase	230/208-60-1	230/208-60-1	230/208-60-1	230/208-60-1
POWER AND COMMUNICATION CABLE	No. x AWG	4 x 14AWG	4 x 14AWG	4 x 14AWG	4 x 14AWG
REFRIGERATION SYSTEM					
CONNECTIONS		Flare	Flare	Flare	Flare
LIQUID LINE O.D.	in	1/4	1/4	1/4	3/8
SUCTION LINE O.D.	in	3/8	3/8	1/2	5/8
DIMENSIONS & WEIGHT					
W X H X D	in	22 1/2 x 8 1/2 x 22		33 x 9 3/4 x 33	
NET WEIGHT	lbs	31.9	34	61.8	59.5
SHIPPING WEIGHT	lbs	38.5	40.7	81.6	79.5
PACKAGE DIMENSIONS W X H X D	in	28 3/4 x 11 1/2 x 26		39 1/4 x 37 x 14	39 1/4 x 37 x 14 1/2

PERFORMANCE RATINGS		Multi Outdoor		
		18k	24k	36k
OUTDOOR MODEL		FPHMR18A3A	FPHMR24A3A	FPHMR36A3A
SPECIFICATIONS				
POWER SOURCE		208-230/60/1	208-230/60/1	208-230/60/1
EST. YEARLY OPERATING COST	\$	\$90	\$172	\$259
RUNNING CURRENT COOLING RATED	A	6.5	8.7	11
RUNNING CURRENT HEATING RATED	A	7.3	8.7	13
POWER INPUT COOLING MIN. - RATED - MAX.	W	1440 (510-2610)	1920 (420-2640)	2520 (700-5000)
POWER INPUT HEATING MIN. - RATED - MAX.	W	1530 (450-3510)	1920 (420-4020)	3060 (600-6000)
POWER AND COMMUNICATION CABLE	No. x AWG	4 x 14AWG	4 x 14AWG	4 x 14AWG
DIMENSIONS W x H x D	in	33 7/8 x 26 3/8 x 12 1/4	37 3/8 x 33 x 13 3/8	37 3/8 x 41 3/8 x 13 3/8
NET WEIGHT	lbs	108	159	186
SHIPPING WEIGHT	lbs	119	170	216
REFRIGERATION SYSTEM				
REFRIGERANT		R410A	R410A	R410A
FACTORY PRECHARGE	oz	63	81.13	105.82
LIQUID LINE O.D.	in	1/4	1/4	1/4
SUCTION LINE O.D.	in	3/8	3/8	3/8
MIN./MAX. LINE LENGTH (EACH)	ft	82	66	66
MIN./MAX. LINE LENGTH (TOTAL)	ft	164	197	197
MAX. HEIGHT DIFFERENCE	ft	49	49	49
SOUND PRESSURE LEVEL COOLING	A	55	59	59
SOUND PRESSURE LEVEL HEATING	A	55	59	59
OPERATING RANGE COOLING	°F DB	14-115	14-115	14-115
OPERATING RANGE HEATING	°F WB	-13-75	-13-75	-13-75
MINIMUM AMPACITY	A	30A	30A	30A
MAX. TD FUSE/BREAKER	A	45A	45A	45A

Your operating costs will depend on your utility rates and use. The estimated operating cost is based on a electricity cost of \$.12 per kWh. For more information, visit www.ftc.gov/energy.

Models require grille. Sold separately.

Due to continuing research in new energy-saving technology, specifications are subject to change without notice.



MULTI ZONE • THE INSIDER® CONCEALED DUCTED HEAT PUMPS

Indoor unit installs in the ceiling or furr down for unobtrusive installation. Conditioned or non-conditioned air can be added to ducting to allow fresh air into the conditioned space whenever required.



Features

- Precision Inverter® technology (variable speed compressor)
- Soft start compressor
- BLDC motor
- Cooling/Heating/Fan mode
- Dry mode
- 3 fan speeds
- Auto restart
- Auto changeover
- DiamonBlue Advanced Corrosion Protection®
- Control lock function on controller
- External Static Pressure Range (ESP)
 - 9K/12K/18K (0 – .40) WC
 - 24K (0 – .40) WC

Operates in extreme conditions

- Built-in low ambient standard, down to 14°F (Cooling mode)
- Low ambient operation down to -13°F (Heating mode)
- Low temperature compressor start-up protection



FPHMR18A3A , FPHMR24A3A



FPHMR36A3A

PRO SERIES SPECIFICATIONS

PERFORMANCE RATINGS		Multi Zone - The Insider™ Concealed Ducted Heat Pumps			
		9k	12k	18k	24k
INDOOR MODEL		FPHFD09A3A	FPHFD12A3A	FPHFD18A3A	FPHFD24A3A
SPECIFICATIONS					
CAPACITY COOLING (RATED)	Btu	9000	12000	18000	24000
CAPACITY HEATING (RATED)	Btu	10000	12500	19000	24000
MOISTURE REMOVAL	Pts/h	1.9	3.2	3.2	5.1
AIRFLOW	CFM	235/285/309	235/285/338	370/440/529	501/574/647
SOUND RATING (MAX.-MIN.)	dB-A	29/27/26	36/33/30	38/35/33	38/36/34
ELECTRICAL DATA					
POWER SOURCE	V-Hz-Phase	230/208-60-1	230/208-60-1	230/208-60-1	230/208-60-1
POWER AND COMMUNICATION CABLE	No. x AWG	4 x 14AWG	4 x 14AWG	4 x 14AWG	4 x 14AWG
REFRIGERATION SYSTEM					
CONNECTIONS		Flare	Flare	Flare	Flare
LIQUID LINE O.D.	in	1/4	1/4	1/4	3/8
SUCTION LINE O.D.	in	3/8	3/8	1/2	5/8
DIMENSIONS & WEIGHT					
W X H X D	in	35 7/8 x 7 1/2 x 17		46 1/2 x 7 1/2 x 17 1/2	46 x 34 1/4 x 13 1/4
NET WEIGHT	lbs	45.2	45.2	66.2	70.5
SHIPPING WEIGHT	lbs	51.8	51.8	77.2	81.6

PERFORMANCE RATINGS		Multi Outdoor		
		18k	24k	36k
OUTDOOR MODEL		FPHMR18A3A	FPHMR24A3A	FPHMR36A3A
SPECIFICATIONS				
POWER SOURCE		208-230/60/1	208-230/60/1	208-230/60/1
EST. YEARLY OPERATING COST	\$	\$90	\$172	\$259
RUNNING CURRENT COOLING RATED	A	6.5	8.7	11
RUNNING CURRENT HEATING RATED	A	7.3	8.7	13
POWER INPUT COOLING MIN. - RATED - MAX.	W	1440 (510-2610)	1920 (420-2640)	2520 (700-5000)
POWER INPUT HEATING MIN. - RATED - MAX.	W	1530 (450-3510)	1920 (420-4020)	3060 (600-6000)
POWER AND COMMUNICATION CABLE	No. x AWG	4 x 14AWG	4 x 14AWG	4 x 14AWG
DIMENSIONS W x H x D	in	33 7/8 x 26 3/8 x 12 1/4	37 3/8 x 33 x 13 3/8	37 3/8 x 41 3/8 x 13 3/8
NET WEIGHT	lbs	108	159	186
SHIPPING WEIGHT	lbs	119	170	216
REFRIGERATION SYSTEM				
REFRIGERANT		R410A	R410A	R410A
FACTORY PRECHARGE	oz	63	81.13	105.82
LIQUID LINE O.D.	in	1/4	1/4	1/4
SUCTION LINE O.D.	in	3/8	3/8	3/8
MIN./MAX. LINE LENGTH (EACH)	ft	82	66	66
MIN./MAX. LINE LENGTH (TOTAL)	ft	164	197	197
MAX. HEIGHT DIFFERENCE	ft	49	49	49
SOUND PRESSURE LEVEL COOLING	A	55	59	59
SOUND PRESSURE LEVEL HEATING	A	55	59	59
OPERATING RANGE COOLING	°F DB	14-115	14-115	14-115
OPERATING RANGE HEATING	°F WB	-13-75	-13-75	-13-75
MINIMUM AMPACITY	A	30A	30A	30A
MAX. TD FUSE/BREAKER	A	45A	45A	45A

Your operating costs will depend on your utility rates and use. The estimated operating cost is based on a electricity cost of \$.12 per kWh. For more information, visit www.ftc.gov/energy.

Due to continuing research in new energy-saving technology, specifications are subject to change without notice.

