

For: ☐ File ☐ Resubmit ☐ Approval ☐ Other \_\_\_\_\_

# M2430R1

## 2.5-ton Return Air Plenum Module

Job Name:	Location:
Date:	Tag #:
Architect:	Engineer:
Mechanical:	Distributor:
Rep:	
(Company)	(Project Manager)

**Features**

- Blank side and top allow for custom, multiple-return openings
- Centrally located filter
- Heavy-duty closed cell insulation (no exposed fiberglass insulation)
- Filter access from both sides
- Standard Unico System 'latch' system

**Matching Modules**

M2430BL1-EC1/EC2  
M2430CL1-B  
M2430CL1-E  
M2430CL1-C  
M2430CL1-H

**Indoor Unit Size**

# 2430

**General Data:**

Dimensions (H x W x D)	17.5 x 25 x 14 in. (445 x 635 x 349 mm)
Total Return Opening	154 in <sup>2</sup> (0.10 m <sup>2</sup> )
Equivalent Return Opening Diameter	14 in (356 mm)
Filter Size	14 in x 25 in x 1 in (356 mm x 635 mm)
Maximum Airflow	850 CFM (400 L/s)
Maximum Velocity	350 FPM (1.78 m/s)
Initial Resistance	0.04 in. wg (10 Pa)

**Model Number Key (available models):**

M	2430	R	1
Model Series	Nominal Capacity	Module Type	Revision
M = Modular	2430 = 24000 to 30000 Btu/hr	R = Return Air Plenum	

**Optional Accessories**

- ☐ Hot water coil heating module (M2430CL1-H)
- ☐ Modular Variable Speed Air Handler (M2430BL1-EC\*)
- ☐ Secondary drain pan, 2 module (UPC-20B)
- ☐ Secondary drain pan, 3 module (UPC-20C)
- ☐ Return adapter (UPC-104-2430)

**Notes:**

1. Refer to installation manual for more information.

# M2430R1

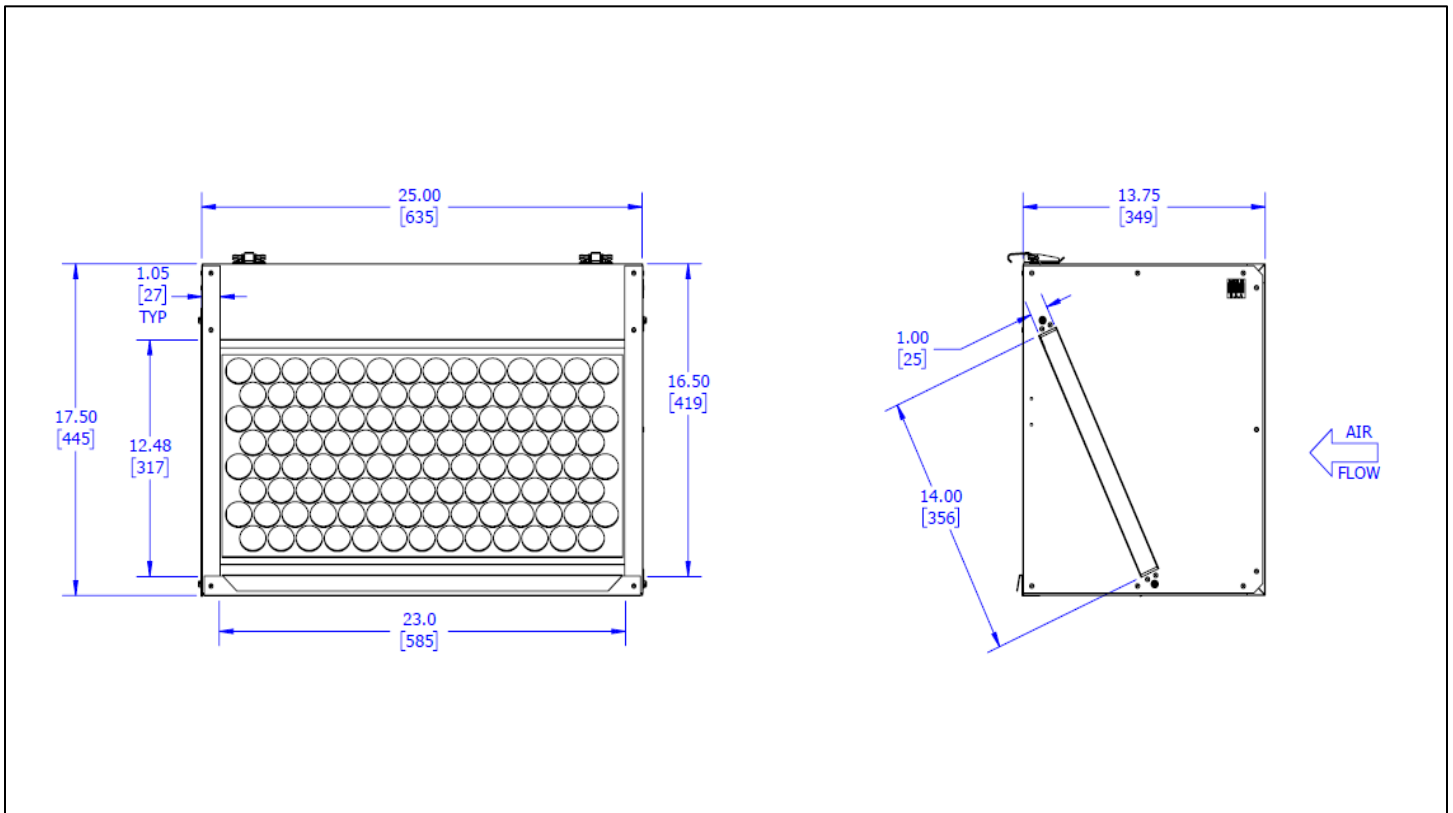
Job Name:

Location:

Date:

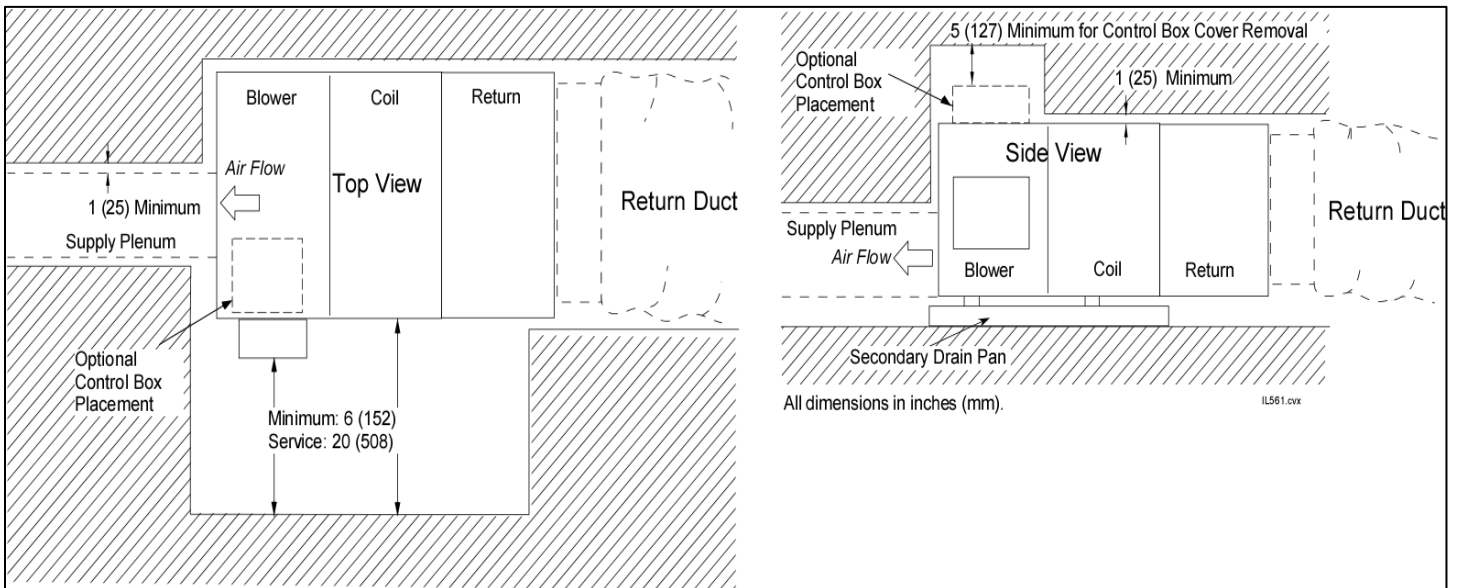
Tag #:

## RETURN AIR PLENUM MODULE DIMENSIONS



\* Contact Unico for dimensions of assembled modules.

## Installation Clearances



Unico, Inc.  
<http://tech.unicosystem.com>  
 314-481-9000  
 800-527-0896  
[sales@unicosystem.com](mailto:sales@unicosystem.com)



Note – for continuous product improvement, Unico reserves the right to change specifications without notice.

© 2017 Unico, Inc., Arnold, MO. "Unico System" is a registered trademark of Unico, Inc.

SB-M2430R1.001 (20170815)

Page 2 of 2