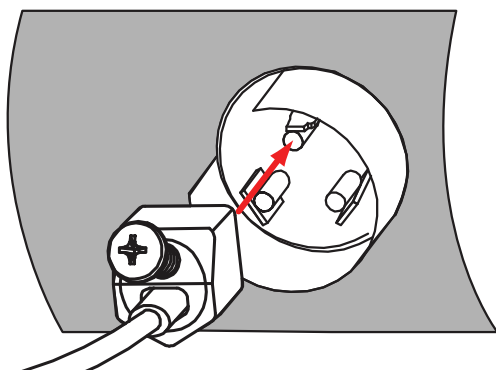
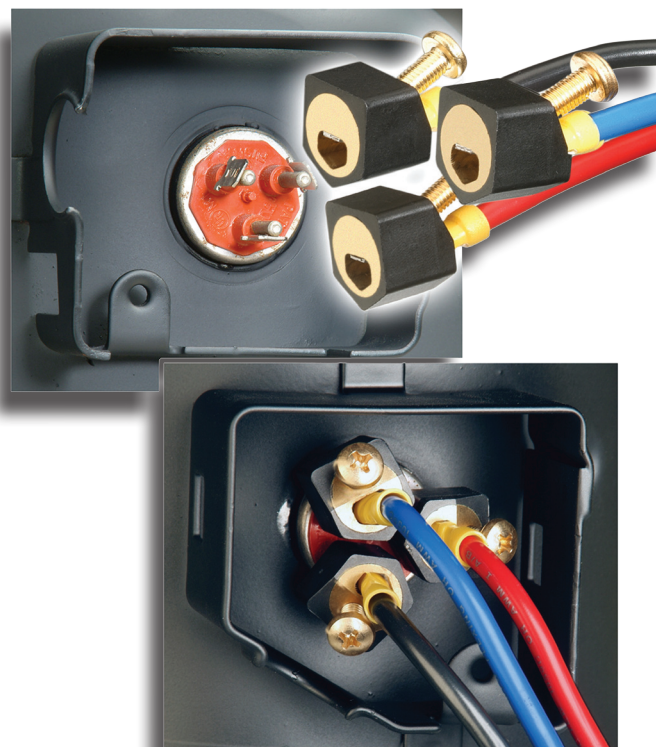


## QwikLug™ Compressor Terminal Repair Kits

Mainstream's patented product, **QwikLug™**, easily attaches to damaged or corroded spade connectors. **QwikLug™** comes with color-coded leads to connect to existing wiring. The outer connector housing is a nylon insulator, eliminating the potential for shorting. It's that easy!

- Replaces damaged or corroded spade terminals
- Fits all standard compressor terminals
- Tightens from the front with a screwdriver
- Provides a durable brass connection – tested for more than 100,000 compressor starts
- Fully insulated brass connector
- Available with 10 AWG or 12 AWG leads in 2' or 4' lengths
- 2' leads have been pre-stripped at the wire connection end
- 4' leads have fully insulated female connectors for connection directly to the contactor
- Fully insulated 4' leads with female connectors to link directly to the contactor



***Finally... a Quick & Simple Method to Repair Compressor Terminals!***

### Directions for use:

1. Clean the damaged or corroded terminals.
2. Push the **QwikLug™** connector onto the terminal.
3. Tighten from the front with a Phillips screwdriver.

*For more details or information about **QwikLug™**, visit [www.qwik.com](http://www.qwik.com)*

### QwikLug™ Compressor Terminal Repair Kits Ordering Information

- **QT2810** - Package of 3 QwikLugs™ with 10 AWG 2' Leads
- **QT2812** - Package of 3 QwikLugs™ with 12 AWG 2' Leads
- **QT2910** - Package of 3 QwikLugs™ with 10 AWG 4' Leads
- **QT2912** - Packages of 3 QwikLugs™ with 12 AWG 4' Leads

QwikProducts™ and QwikLug™ are trademarks of Mainstream Engineering Corporation.  
Rockledge, Florida 32955, (321) 631-3550  
U.S. Patents #6,048,233 & #6,565,393 All **QwikProducts™** are made in the USA

