

Thru-the-Wall Heating & Cooling Comfort For Multi-Family Construction



Electric Heat - Electric Cooling

Universal Series



AHRI CERTIFIED
www.ahridirectory.org
Single Package Vertical AC
AHRI Standard 390

Features

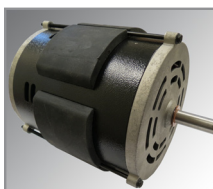
- Self-Contained Heating and Cooling Units
- Easy, Reachable Access Ports
- Precharged and Prewired
- Slide Out Chassis
- Polarized Molex Electrical Plug Connections on Cooling Chassis
- Supplied with Pre-Painted Stamped Exterior Grille
- 16" x 25" Filter Included (non washable)

Cooling System

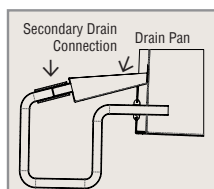
- R-410A High Efficiency Compressor
- 1, 1.5, 2 and 2.5 Ton Cooling Capacities
- 5 Speed DC Indoor Motor
- Standard Secondary Drain Connection

Heating

- Up to 15KW Electric Resistance Heat
- Up to 51,000 BTUH Heating Capacity Output
- 2 Stage Electric Heat Control Board
- Internal Automatic Reset Thermal Limits
- Internal Fusing

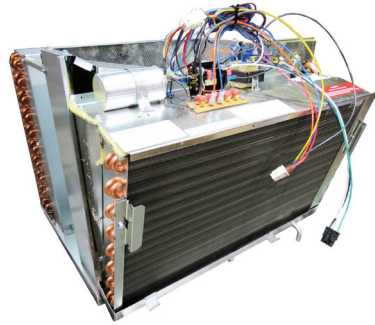


5-Speed DC Motor



Secondary Drain

COMFORT PACK Electric Heating - Electric Cooling



Universal Chassis

PERFORMANCE DATA

MODELS	NOMINAL COOLING TONS	COOLING BTU	EER (outside temp.)	RATED HEATING BTU@230V	RATED HEATING BTU@208V	HEATING KW	SHIPPING WEIGHT
			95°			230 208	
CPE41205-U***	1	12,000	9.2	17,000	14,000	5 4.1	315
CPE41207-U***	1	12,000	9.2	23,800	19,400	7 5.7	315
CPE41210-U***	1	12,000	9.2	34,000	27,600	10 8.1	315
CPE41805-U***	1.5	18,000	9.2	17,000	14,000	5 4.1	325
CPE41807-U***	1.5	18,000	9.2	23,800	19,400	7 5.7	325
CPE41810-U***	1.5	18,000	9.2	34,000	27,600	10 8.1	325
CPE41815-U***	1.5	18,000	9.2	51,000	41,600	15 12.2	325
CPE42405-U***	2	22,400	9.2	17,000	14,000	5 4.1	350
CPE42407-U***	2	22,400	9.2	23,800	19,400	7 5.7	350
CPE42410-U***	2	22,400	9.2	34,000	27,600	10 8.1	350
CPE42415-U***	2	22,400	9.2	51,000	41,600	15 12.2	350
CPE43010-U***	2.5	27,000	9.2	34,000	27,600	10 8.1	360
CPE43015-U***	2.5	27,000	9.2	51,000	41,600	15 12.2	360

ELECTRICAL DATA

MODELS	VOLTAGE	COMPRESSOR		OUTDOOR FAN MOTOR			INDOOR BLOWER MOTOR		TOTAL AMPS	MIN CIRCUIT AMPS	MAX OVER CURRENT PROTECTOR
		RLA	LRA	HP	FLA	LRA	HP	FLA			
CPE41205-U	208-230/60/1	5.1	29.5	1/4	1.8	3.6	1/3	3.0	25.1	30.6	35
CPE41207-U	208-230/60/1	5.1	29.5	1/4	1.8	3.6	1/3	3.0	34.1	41.8	45
CPE41210-U	208-230/60/1	5.1	29.5	1/4	1.8	3.6	1/3	3.0	47.2	58.3	60
CPE41805-U	208-230/60/1	8	43.5	1/4	1.8	3.6	1/3	3.0	25.1	30.6	35
CPE41807-U	208-230/60/1	8	43.5	1/4	1.8	3.6	1/3	3.0	34.1	41.8	45
CPE41810-U	208-230/60/1	8	43.5	1/4	1.8	3.6	1/3	3.0	47.2	58.3	60
CPE42415-U	208-230/60/1	8	43.5	1/4	1.8	3.6	1/3	3.0	69.3	85.9	90
CPE42405-U	208-230/60/1	10.9	61.6	1/4	1.8	3.6	1/2	3.9	26.0	31.5	35
CPE42407-U	208-230/60/1	10.9	61.6	1/4	1.8	3.6	1/2	3.9	35.0	42.7	45
CPE42410-U	208-230/60/1	10.9	61.6	1/4	1.8	3.6	1/2	3.9	48.1	59.2	60
CPE42415-U	208-230/60/1	10.9	61.6	1/4	1.8	3.6	1/2	3.9	70.2	86.8	90
CPE43010-U	208-230/60/1	14.3	72.2	1/4	2.4	-	1/2	3.9	48.1	59.2	60
CPE43015-U	208-230/60/1	14.3	72.2	1/4	2.4	-	1/2	3.9	70.2	86.8	90

OPTIONAL ACCESSORIES

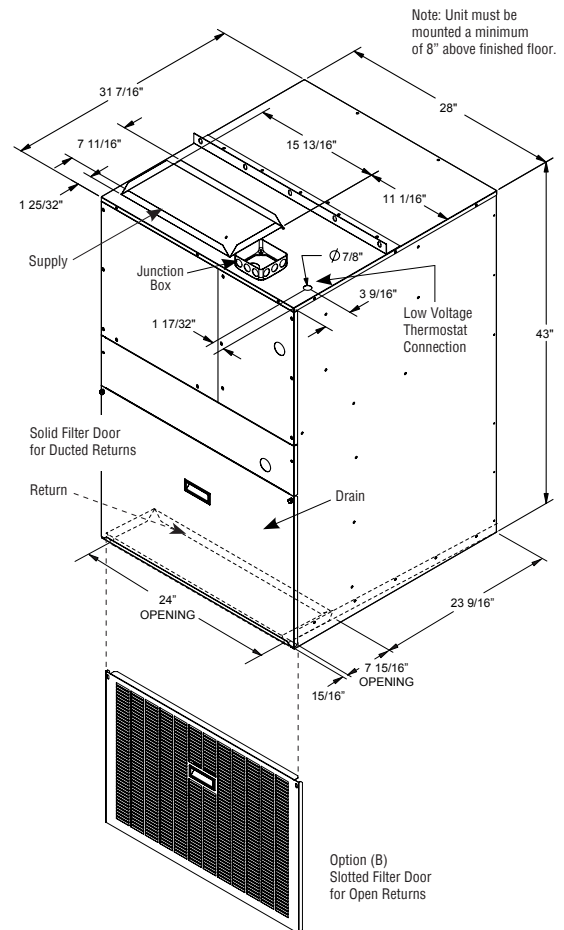
CPWS	Wall Sleeve (Unassembled)
CPWSA	Wall Sleeve Adapter (Unassembled)
CPLG	Architectural Louver Grille
CPLG-S	Architectural Louver Grille for Sleeve
CPLG-P	Architectural Louver Grille Painted
CPLG-SP	Architectural Louver Grille for Sleeve Painted
CPSPG-P	Stamped Grille Painted
National Comfort Products offers Architectural Louver Grilles for all models. Outdoor grilles provided by others must be approved by National Comfort Products to maintain unit performance and warranty coverage. See Architectural Louvered Grilles Specification Sheet for more details	
A	Omit Stamped Grilles
B	Slotted Filter Door
C	Combination of both A & B

COMFORT PACK AIR FLOW DATA

MODEL	Static Pressure/CFM				
	0.1	0.2	0.3	0.4	0.5
CPE412	415-780	325-770	225-760	340-725	240-680
CPE418	415-780	325-770	225-760	340-725	240-680
CPE424	405-850	378-833	350-815	328-803	305-790
CPE430	405-850	378-833	350-815	328-803	305-790

For more detailed air flow data consult the CPE U-Models Installation Guide 1/2019 (p.25)

All units are set from the factory based on a .1 static.
Setpoint may be different for heating and cooling.
All specifications are subject to change without notice.



NATIONAL COMFORT PRODUCTS

HEATING & A/C EQUIPMENT

National Comfort Products

A Division of National Refrigeration and Air Conditioning Products, Inc.

539 Dunksferry Road • Bensalem, PA 19020-5908

(800) 523-7138 • Fax (215) 639-1674

www.NationalComfortProducts.com



Spec CPU-E 1/2019