

INDOOR A/C INSTALLATION INSTRUCTIONS

Galvanized Condenser Stand
87746 (PCNG)

- Use condenser bracket PCNG for air conditioners that weigh less than 440lbs.
- After installing the metal fittings, please review the contents of the provided warning.
- If disassembling or disposing of the metal fittings, please consult with a specialist or the seller.



- Never sit or swing on the item, as it may break.
- Do not remodel; the item's lifespan will shorten if the strength is insufficient.
- Tighten the screws quickly. Otherwise, the item may fall apart.
- The item's corners may cut your hands. Please warn children.

*Anchor bolts are not included in this frame set.
Once the mounting location has been determined,
please use commercially available anchor bolts.

| No. | 1 | 2 | 3 | 4 | 5 | 6 |
|------------------------------------|-------|-------|-------|-------|-------|-------|
| Table of Included Parts name/shape | | | | | | |
| Amt. | 2 pcs | 2 pcs | 2 pcs | 4 pcs | 4 pcs | 4 pcs |

Assembly of the frame set

1 Frame assembly

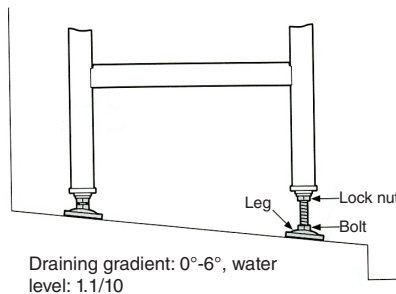
- By using a hammer or the equivalent, alternate between hitting the left and right side of frame connector (2) until it reaches the stopper of leg connector (1). [Diagram 1]
- *Hit frame connector (2) until it fully fits into the stopper.
- Always make use of a retainer. [Diagram 1]

2 Mounting base installation

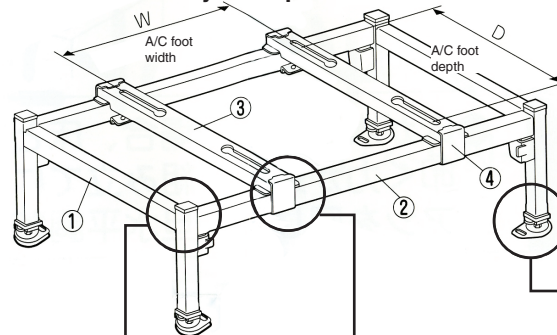
- In conjunction with the foot breadth, join frame connector (2) to mounting base (3) with metal fittings (4). [Diagram 2]

3 Frame leveling

- Turn the leg bolts until the frame stands evenly, and fast the lock nuts (4 pcs). [Diagram 3]



• PCNG Assembly Example



| A/C fixed effective size for PCNG 63 (inches) | |
|---|---------------|
| W | 15.75 - 33.50 |
| D | 11.80 - 16.93 |

Diagram 3

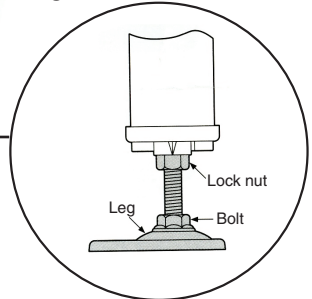


Diagram 1

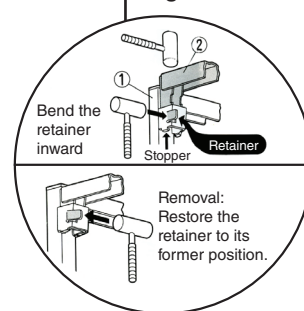
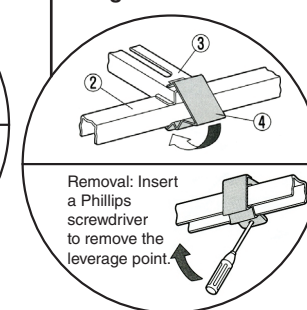


Diagram 2



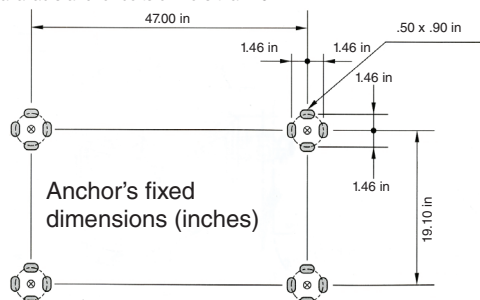
[CAUTION]

When attaching mounting base to frame connector (2), hit the lower parts of metal fittings (4) with a large plastic hammer. (Please be careful when pushing metal fittings (4) into the frame, as it may result in injury.)

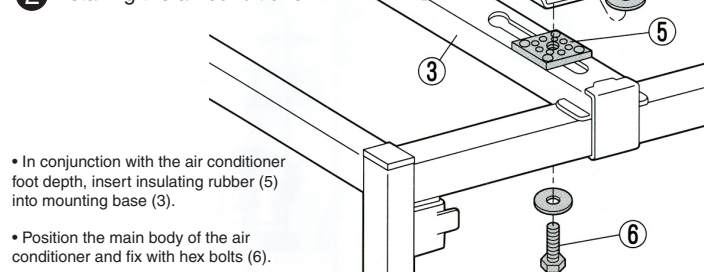
Installation of the fixed frame and air conditioner

1 Attaching the frame with anchor bolts

The below sizes are appropriate for commercially available anchor bolts of more than 10.



2 Installing the air conditioner



*If installing an air conditioner at head level, attach the metal fittings to the wall surface.

The buyer of the afore-listed product(s) hereby indemnify Rectorseal Corporation, its successors and assigns, as they may in time appear, harmless against any claims, demands or liability arising out of the misuse of or from any use outside the intended scope of the afore-listed product(s). Misuse or use outside the intended scope shall include any use contrary to that which is indicated with the accompanying literature and instructions. This unit must be installed in accordance with all applicable local building and mechanical codes. The purchaser or installer of these products is responsible for insuring that the structure and/or building materials making up the structure are of sufficient strength, and a sufficient number and type of fasteners are installed, to take the combined weight of the bracket and unit or units.