



HVAC Controls

# ZONE CONTROL MADE SIMPLE

*Zoning and Damper Selection Guide*



888.359.0362 • [www.iohvaccontrols.com](http://www.iohvaccontrols.com)

*Thank you  
for supporting  
American jobs*

# ESP ZONE PANELS

## 2 Zones



**ZP2-HC-ESP** (1 Heat / 1 Cool)

## 3 Zones



**ZP3-HCMS-ESP** (Up to 2 Heat / 2 Cool)  
**ZP3-HPS-ESP** (Up to 3 Heat / 2 Cool,  
Heat Pump or Dual Fuel)

## 6 Zones



**ZP6-ESP** (Up to 4 Heat / 2 Cool,  
Heat Pump or Dual Fuel)

All of our ESP zone panels are equipped with our award-winning electronic static pressure control technology. As zone dampers open and close, the static pressure sensor continuously monitors the system static pressure. If the static pressure goes above the static pressure setpoint, the panel will open the non-calling zones just enough to relieve the excess pressure and bring the system below the desired setpoint. This eliminates the need for a bypass damper. *The static pressure sensor is included.*

# STANDARD ZONE PANELS



**ZP2-HC** (1 Heat / 1 Cool)



**ZP3-HCMS** (Up to 2 Heat / 2 Cool)  
**ZP3-HPS** (Up to 3 Heat / 2 Cool,  
Heat Pump or Dual Fuel)



**ZP6** (Up to 3 Heat / 2 Cool,  
Heat Pump or Dual Fuel)

***All zone panels have a 10 year warranty***



# MD Series



The MD Series dampers are perfect for use with most zoning systems and recommended for use with our ESP zone panels. These dampers are shipped complete and ready for installation. The MD Series dampers can be installed in any position. They are rated for duct systems less than 1.0" WC. The MD Series dampers have a simple adjustment for setting the minimum position.

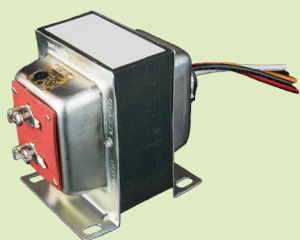
## Additional Products



**Discharge and Return  
Air Sensor**  
ZPA-DTS



**Outdoor  
Temperature  
Sensors**  
ZPA-OTS

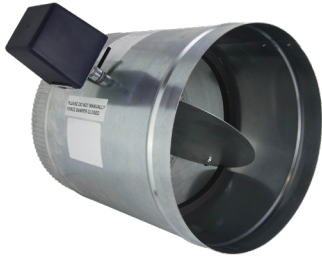


**Transformer**  
TR-40 (40VA)  
TR-40-HON (40VA)  
TR-75 (75VA)

ZONE PANEL FEATURES	ZP2-HC	ZP3-HCMS	ZP3-HPS	ZP6
NUMBER OF ZONES	2	3	3	6
EXPANDABLE TO				12
HEAT / COOL PANEL	✓	✓		✓
HEAT PUMP PANEL			✓	✓
HEATING STAGES	1	2	3	3*
COOLING STAGES	1	2	2	2
STAGING BY THERMOSTAT	✓	✓	✓	✓
STAGING BY TIMER				✓
CAPACITY CONTROL				✓
BUILT-IN DUAL FUEL KIT			✓	✓
AUTO CHANGEOVER	✓	✓	✓	✓
FIRST CALL PRIORITY	✓	✓	✓	
COOLING PRIORITY				✓
MAJORITY WINS PRIORITY				✓
TIME SHARE	✓	✓	✓	✓
HI / LOW LIMIT SENSOR	✓	✓	✓	✓
INDEPENDENT FAN MODE	✓	✓	✓	✓
SYSTEM STATUS LEDS	✓	✓	✓	✓
SHORT CYCLE PROTECTION	✓	✓	✓	✓
PURGE CYCLE		✓	✓	✓
2-WIRE DAMPERS	✓	✓	✓	✓
3-WIRE DAMPERS <small>MUST BE USED WITH ESP PANELS</small>	✓	✓	✓	✓
DOUBLE FUSED	✓	✓	✓	✓
10 YEAR WARRANTY	✓	✓	✓	✓

\*6 zone ESP panel has up to 4 heating stages

# DAMPER SELECTION GUIDE



Can be used with all standard zone boards

## D SERIES ROUND ZONE DAMPERS

- 2-wire
  - 5 year warranty
- D-XX  
• 4" to 20"

HD-Motor  
2-wire PC/SO  
(10VA)  
30 Second Timing



Can be used with all standard zone boards

## HD SERIES RECTANGULAR ZONE DAMPERS

- 2-wire
  - 5 year warranty
- HD-XXXX  
• 6" x 6" to 36" x 20"  
• Side mount and bottom mount

HD-Motor  
2-wire PC/SO  
(10VA)  
30 Second Timing

## WE ALSO CARRY A FULL LINE OF ELECTRONIC BYPASS DAMPERS



*Equipped with Belimo actuators- the industry's best*



Can be used with all ESP zone boards and standard zone boards

## MD SERIES (MULTI-PURPOSE) ROUND ZONE DAMPERS

- 3-wire
  - 5 year warranty
- MD-XX  
• 4" to 20"

Belimo FP18-Motor  
3-wire PC/PO, floating point  
(2.5VA)  
60 Second Timing

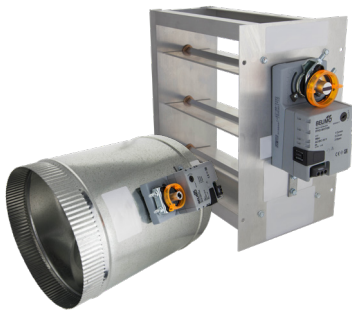


Can be used with all ESP zone boards and standard zone boards

## MD SERIES (MULTI-PURPOSE) RECTANGULAR ZONE DAMPERS

- 3-wire
  - 5 year warranty
- MD-XXXX  
• 6" x 6" to 36" x 20"  
• Side mount and bottom mount

Belimo FP18-Motor  
3-wire PC/PO, floating point  
(2.5VA)  
60 Second Timing

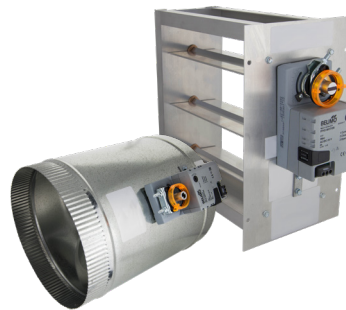


Compatible with the Trane® ComfortLink™ II and American Standard® AccuLink™ systems

## TRANE ZONE DAMPERS

- 10 year warranty
- TD-XX  
• 4" to 20"  
TD-XXXX  
• 6" x 6" to 36" x 20"  
• Side mount and bottom mount

Belimo TD-Motor  
3-wire PC/PO, floating point  
(1.5VA)  
60 Second Timing



Compatible with the Carrier® Infinity® and Bryant® Evolution® systems

## CARRIER ZONE DAMPERS

- 5 year warranty
- CD-XX  
• 4" to 20"  
CD-XXXX  
• 6" x 6" to 36" x 20"  
• Side mount and bottom mount

Belimo CD-Motor  
3-wire PC/PO, floating point  
(2.5VA)  
15 Second Timing



Can be used with all ESP zone boards and standard zone boards

## RETRO ZONE DAMPERS

- 5 year warranty
- RD-XX  
• 5" to 10"

Belimo FP18-Motor  
3-wire PC/PO, floating point  
(2.5VA)  
60 Second Timing

## AVAILABLE AT YOUR LOCAL WHOLESALER