

# PARTS CATALOG R410A

[Model Name]

SUZ-KA24NAHZ

SUZ-KA30NAHZ1

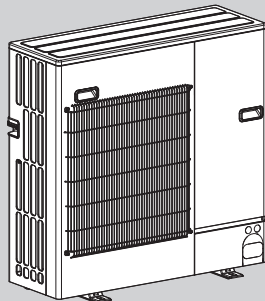
SUZ-KA36NAHZ1

[Service Ref.]

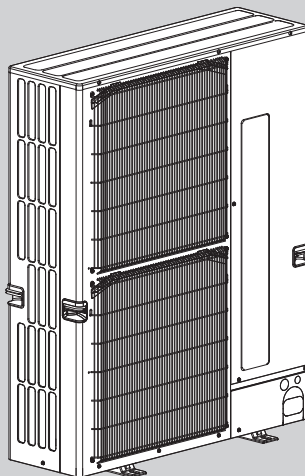
**SUZ-KA24NAHZ-R1**

**SUZ-KA30NAHZ1**

**SUZ-KA36NAHZ1**



**SUZ-KA24NAHZ-R1**



**SUZ-KA30NAHZ1  
SUZ-KA36NAHZ1**

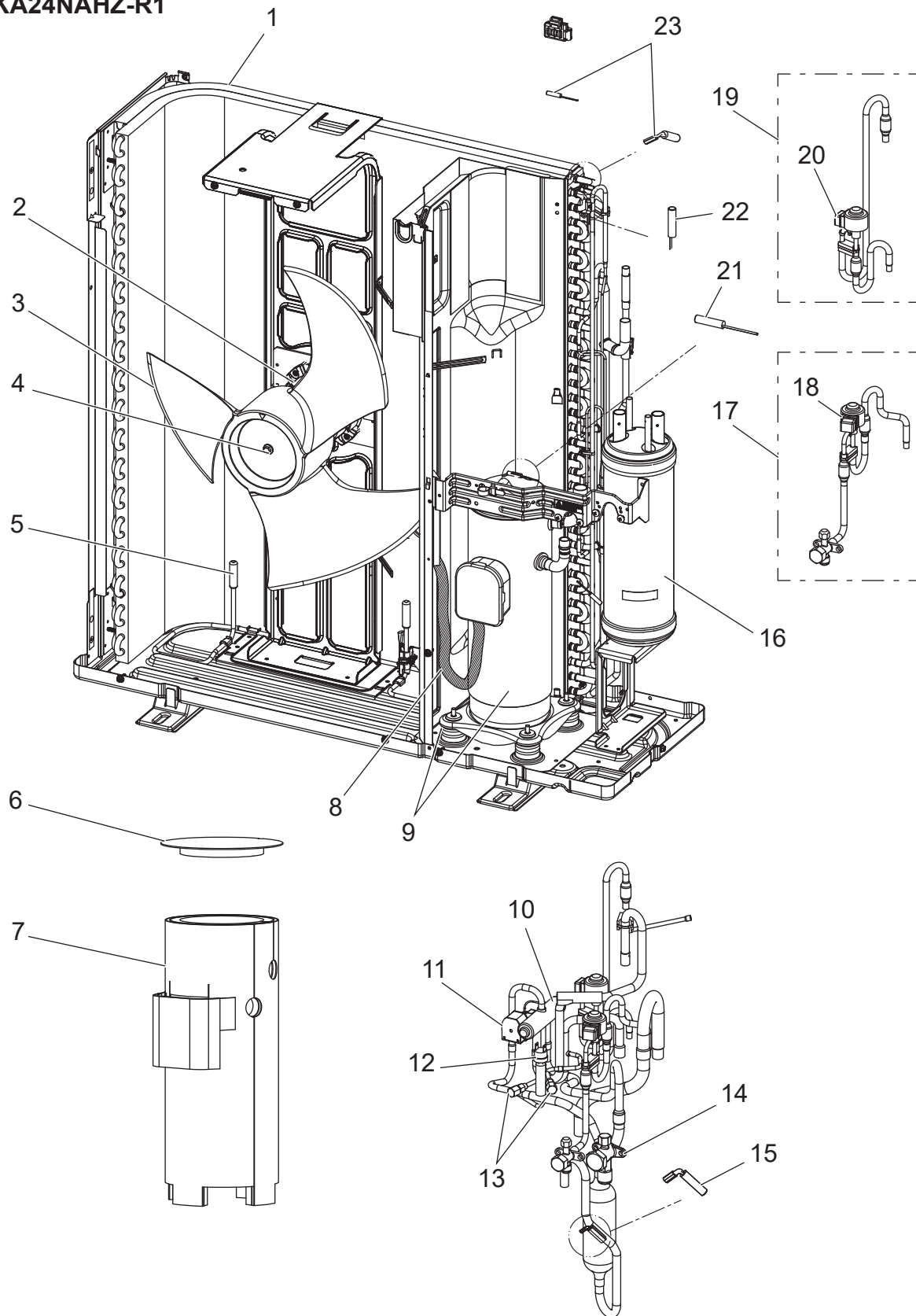
## CONTENTS

1. SERVICE PARTS LIST ..... 2

**SERVICE MANUAL (OCH825)**

## FUNCTIONAL PARTS

SUZ-KA24NAHZ-R1

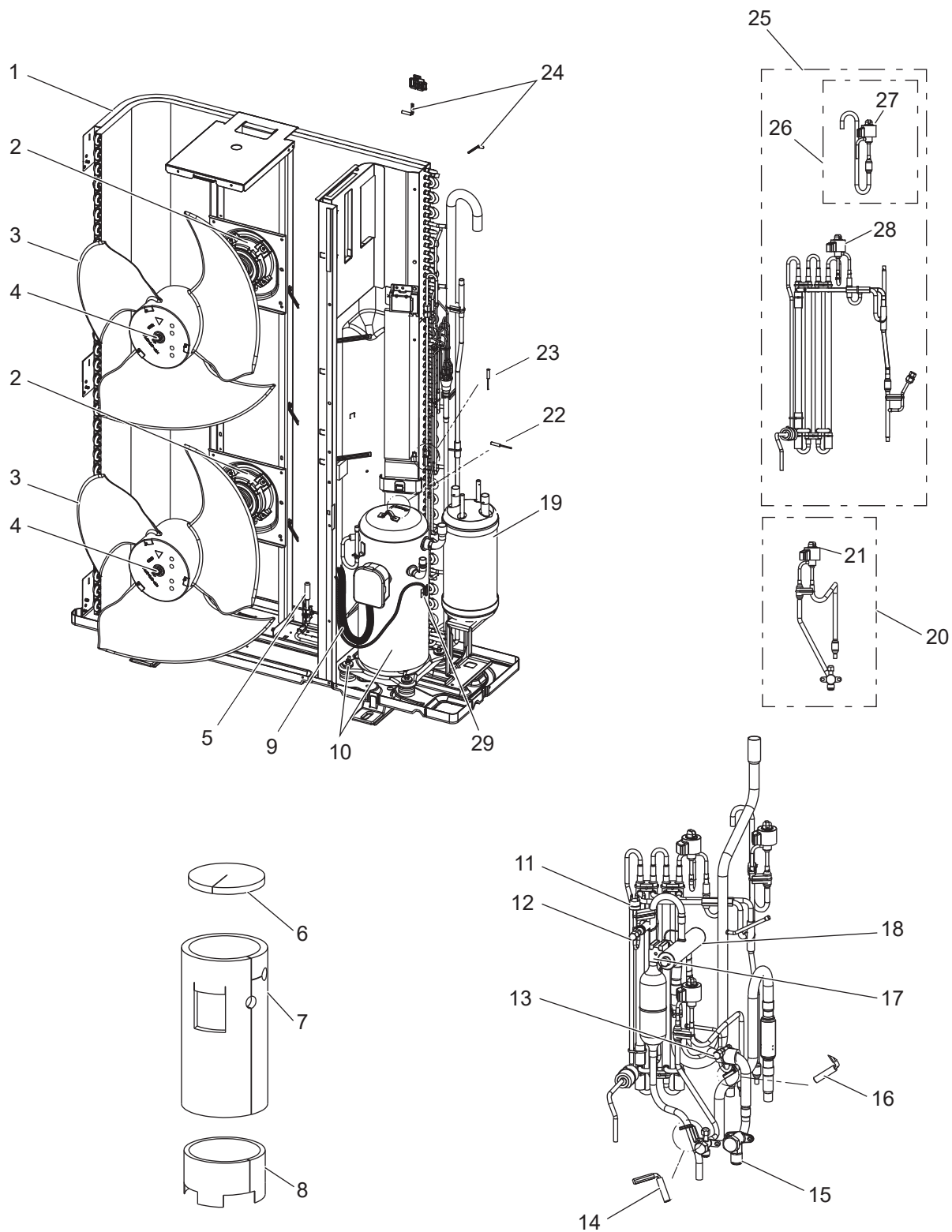


1. The part quantity below indicates the required number of pieces per unit.
2. The circled No. indicates that the part is not shown in the figure.

No.	Parts No.	Parts Name	SUZ-KA24NAHZ-R1	Wiring Diagram Symbol	Remarks
1	T 7 W E 8 4 4 0 8	HEAT EXCHANGER	1		
2	T 7 W A 1 7 2 2 1	FAN MOTOR	1	MF1	
3	R 0 1 E 0 6 1 1 5	PROPELLER FAN	1		
4	R 0 1 E 1 6 0 9 7	CAP NUT (MEC) M6	1		
5	T 7 W B 0 4 3 0 0	BASE HEATER	1	BH, THP	
6	R 0 1 T 0 4 6 0 2	COMP FELT-DVB/TOP	1		
7	T 7 W B 0 2 6 0 2	COMP FELT-DNB/BODY	1		
8	T 7 W C 1 9 5 1 0	LEAD ASSY COMP	1		
9	T 9 7 4 2 1 4 2 7	COMPRESSOR	1	MC	DNB28FBAMT Includes RUBBER MOUNT
10	T 7 W E 0 7 4 0 3	4WAY VALVE	1	21S4	
11	T 7 W H 9 9 2 4 2	SOLENOID COIL (21S4)	1	21S4	Includes SCREW
12	T 7 W E 1 5 2 0 8	H.P SWITCH UL4.14MPA	1	63H	
13	R 0 1 E 1 2 4 1 3	CHARGE PLUG/LB90	2		
14	T 7 W E 0 9 4 1 0	STOP VALVE 5/8F	1	5/8	Includes STRAINER
15	R 0 1 E 3 5 2 0 1	THERMISTOR (DIS)	1	TH4	
16	R 0 1 E 6 5 4 4 0	POWER RECEIVER	1		
17	T 7 W B 0 5 4 0 1	LEV ASSY-B/REC-V	1	LEV-B	
18	R 0 1 H 3 2 2 4 2	COIL(LEV)/XAP-5P RED	1	LEV-B	
19	T 7 W A 0 5 4 0 1	LEV ASSY-A/C-REC	1	LEV-A	
20	R 0 1 H 1 8 2 4 2	COIL(LEV)/XAP-5P WH	1	LEV-A	
21	R 0 1 E 3 9 2 0 1	THERMISTOR (SHELL)	1	TH33	
22	R 0 1 H 8 7 2 0 2	THERMISTOR	1	TH3	
23	R 0 1 M 1 8 2 0 2	THERMISTOR W	1	TH6/7	

## FUNCTIONAL PARTS

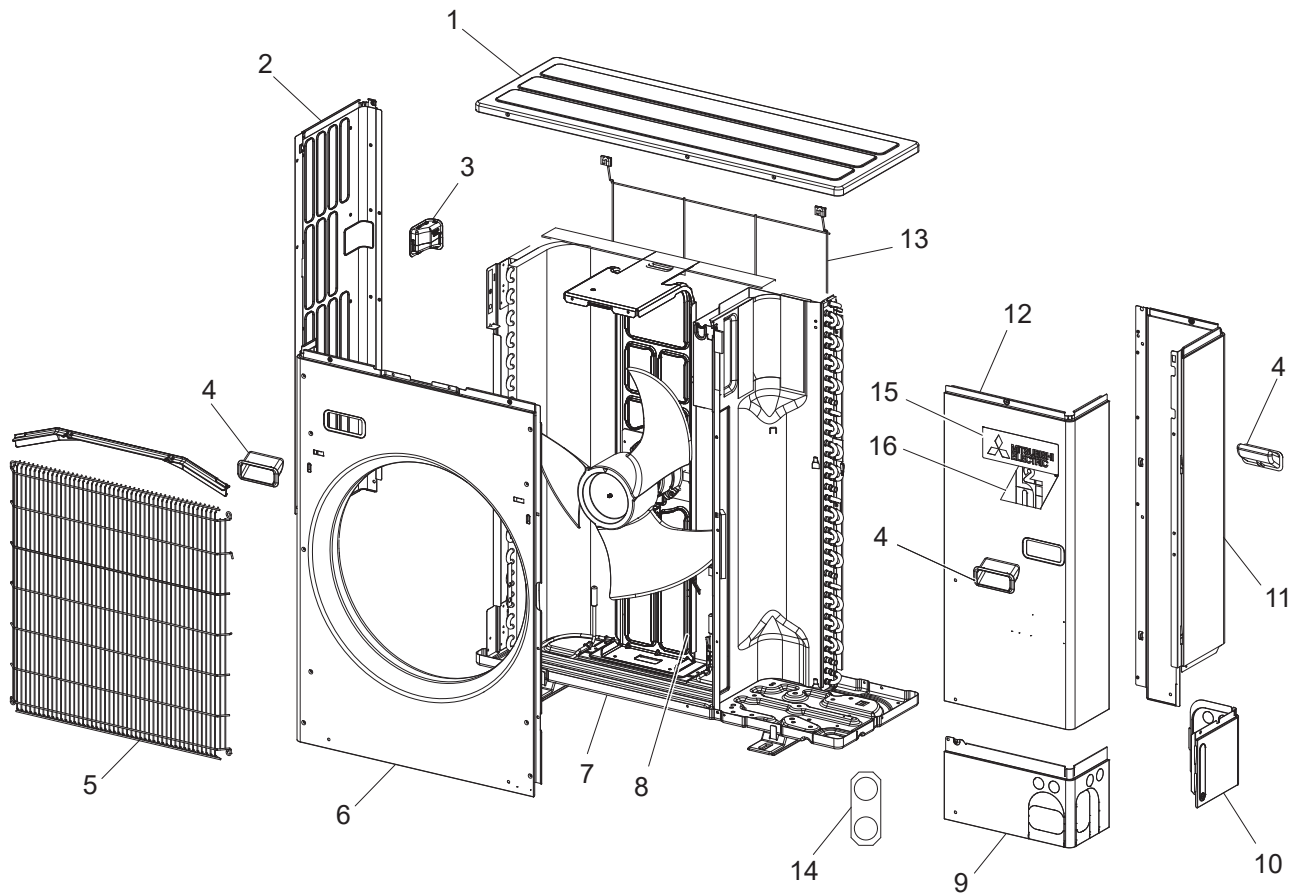
SUZ-KA30NAHZ1  
SUZ-KA36NAHZ1



1. The part quantity below indicates the required number of pieces per unit.
2. The circled No. indicates that the part is not shown in the figure.

No.	Parts No.	Parts Name	SUZ-KA30NAHZ1	SUZ-KA36NAHZ1	Wiring Diagram Symbol	Remarks
1	R 0 1 H 5 7 4 0 8	HEAT EXCHANGER	1	1		
2	T 7 W A 1 0 2 2 1	FAN MOTOR	2	2	MF1, 2	
3	R 0 1 E 1 6 1 1 5	PROPELLER FAN/D550	2	2		
4	R 0 1 E 1 6 0 9 7	CAP NUT (MEC) M6	2	2		
5	T 7 W B 0 5 3 0 0	BASE HEATER	1	1	BH, THP	
6	R 0 1 A 5 7 6 0 2	COMP FELT (TOP)	1	1		
7	T 7 W B 1 8 6 0 2	COMP FELT-B/ANB33FHD	1	1		
8	R 0 1 U 0 0 6 0 2	COMP FELT-U/ANB	1	1		
9	T 7 W C 1 8 5 1 0	LEAD ASSY COMP	1	1		
10	T 9 7 4 A 0 0 2 3	COMPRESSOR	1	1	MC	ANB33FHGMT Includes RUBBER MOUNT
11	T 7 W E 1 5 2 0 8	H.P SWITCH UL4.14MPA	1	1	63H	
12	R 0 1 E 2 8 4 1 3	CHARGE PLUG/ST	1	1		
13	R 0 1 E 3 2 4 1 3	CHARGE PLUG/LB90	1	1		
14	R 0 1 E 3 5 2 0 1	THERMISTOR (DIS)	1	1	TH4	
15	T 7 W E 0 9 4 1 0	STOP VALVE 5/8F	1	1		Includes STRAINER
16	R 0 1 M 2 8 2 0 2	THERMISTOR	1	1	TH32	
17	T 7 W E 6 9 2 4 2	SOLENOID COIL (21S4)	1	1	21S4	Includes SCREW
18	R 0 1 E 4 0 4 0 3	4WAY VALVE	1	1	21S4	
19	R 0 1 E 6 0 4 4 0	POWER RECEIVER	1	1		
20	T 7 W B 1 1 4 0 1	LEV ASSY-B/REC-V	1	1	LEV-B	
21	R 0 1 H R 3 2 4 2	COIL(LEV)/XAP-5P RED	1	1	LEV-B	
22	R 0 1 E 3 9 2 0 1	THERMISTOR (SHELL)	1	1	TH33	
23	R 0 1 E 6 7 2 0 2	THERMISTOR	1	1	TH3	
24	R 0 1 E 9 4 2 0 2	THERMISTOR W	1	1	TH6/7	
25	T 7 W C 0 4 4 0 1	HIC&LEV ASSY	1	1	LEV-A/C	
26	T 7 W A 1 1 4 0 1	LEV ASSY-A/C-HIC	1	1	LEV-A	
27	R 0 1 H R 6 2 4 2	COIL(LEV)/XAP-5P WH	1	1	LEV-A	
28	R 0 1 H R 4 2 4 2	COIL(LEV)/XAP-5P BLU	1	1	LEV-C	
29	T 7 W E 3 2 2 0 1	TRS ASSY	1	1	TRS	

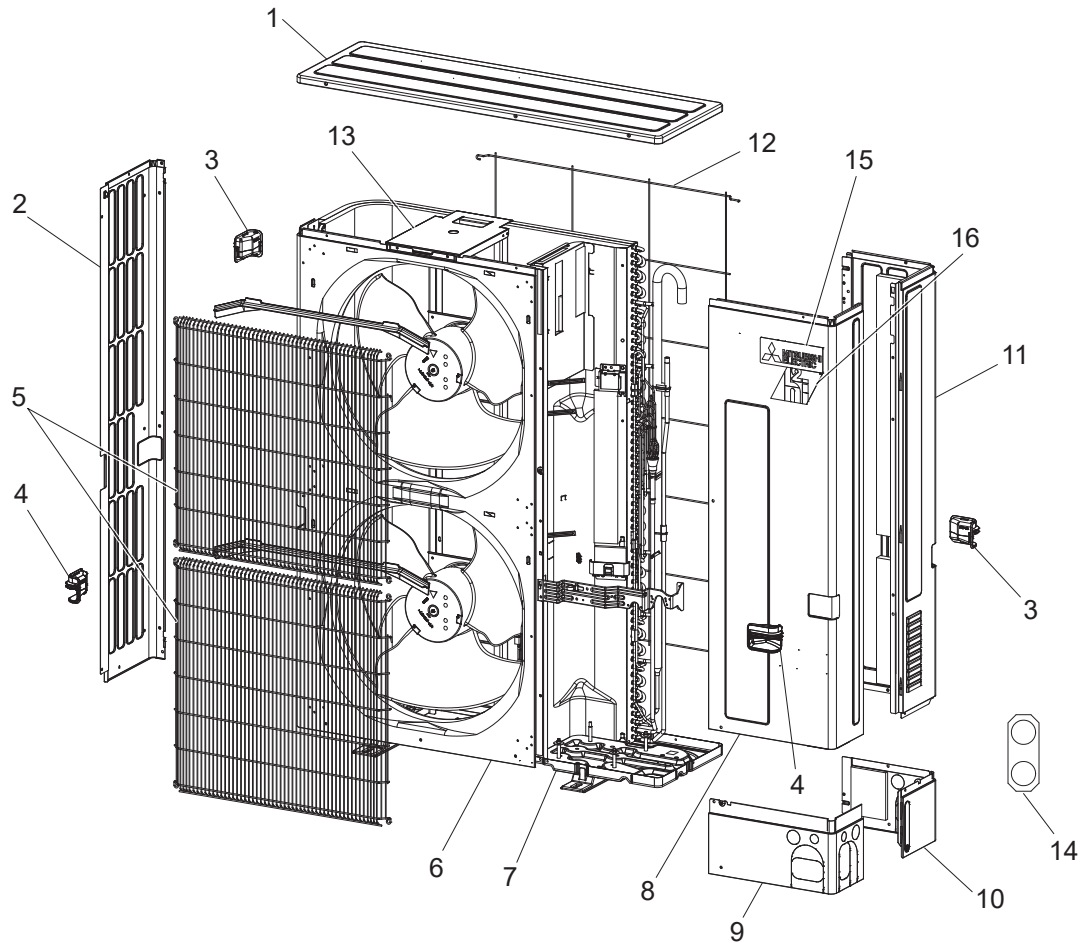
## STRUCTURAL PARTS



1. The part quantity below indicates the required number of pieces per unit.  
 2. The circled No. indicates that the part is not shown in the figure.

No.	Parts No.	Parts Name	SUZ-KA24NAHZ-R1	Wiring Diagram Symbol	Remarks
1	T 7 W E 1 6 6 4 1	TOP PANEL	1		
2	T 7 W E 1 2 6 6 2	SIDE PANEL (L)	1		
3	R 0 1 E 0 6 6 5 5	HANDLE (REAR)	1		
4	R 0 1 E 0 1 6 5 5	HANDLE	3		
5	R 0 1 E 7 4 6 9 1	WIRE GRILLE	1		
6	R 0 1 E 2 2 6 6 8	FRONT PANEL	1		
7	T 7 W E 2 8 6 8 6	BASE ASSY	1		
8	T 7 W E 2 1 1 3 0	MOTOR SUPPORT	1		
9	R 0 1 E 4 0 6 5 8	COVER PANEL (FRONT)	1		
10	R 0 1 E 2 4 6 5 8	COVER PANEL (REAR)	1		
11	T 7 W E 4 1 6 6 1	SIDE PANEL (R)	1		
12	T 7 W E 1 0 6 6 7	SERVICE PANEL	1		
13	T 7 W E 0 7 6 9 8	REAR GUARD	1		
14	T 7 W E 0 1 6 1 7	CONDUIT PLATE	1		
15	R 0 1 A 1 3 0 0 5	BRAND LABEL	1		
16	T 7 W A 1 0 0 0 5	LABEL (H2I)	1		

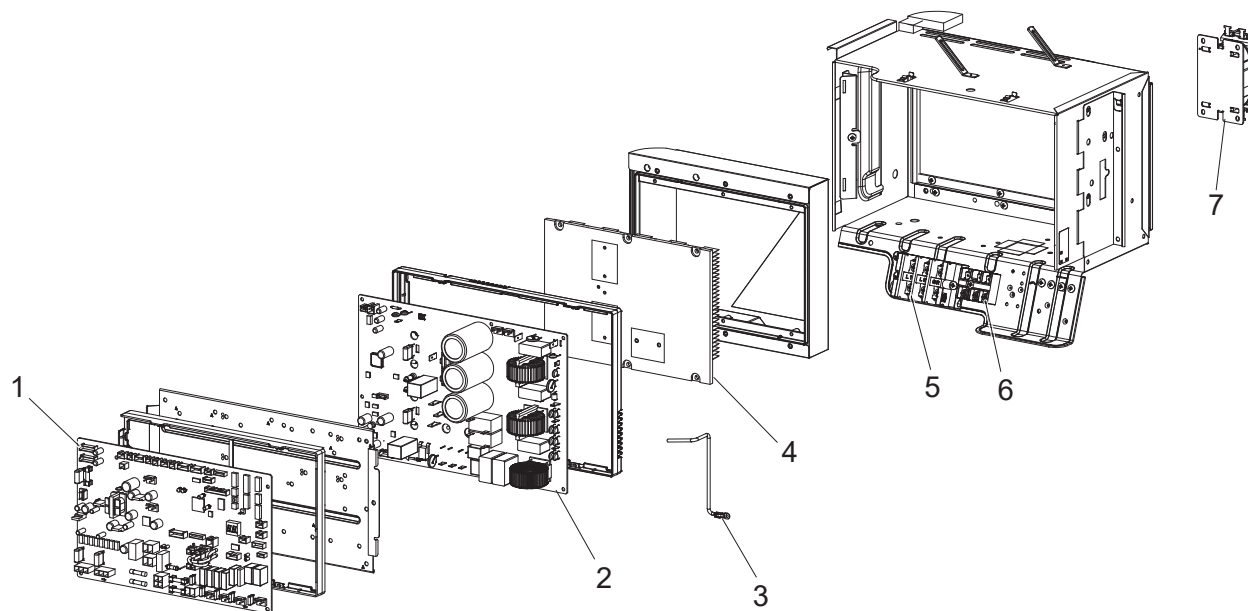
## STRUCTURAL PARTS



1. The part quantity below indicates the required number of pieces per unit.  
 2. The circled No. indicates that the part is not shown in the figure.

No.	Parts No.	Parts Name	SUZ-KA30NAHZ1	SUZ-KA36NAHZ1	Wiring Diagram Symbol	Remarks
1	R 0 1 E 3 6 6 4 1	TOP PANEL	1	1		
2	R 0 1 E 3 0 6 6 2	SIDE PANEL (L)	1	1		
3	R 0 1 E 0 6 6 5 5	HANDLE (REAR)	2	2		
4	R 0 1 E 0 5 6 5 5	HANDLE (FRONT)	2	2		
5	R 0 1 E 7 3 6 9 1	WIRE GRILLE	2	2		
6	R 0 1 E 2 3 6 6 8	FRONT PANEL	1	1		
7	T 7 W E 3 5 6 8 6	BASE ASSY	1	1		
8	T 7 W E 1 9 6 6 8	SERVICE PANEL	1	1		
9	R 0 1 E 3 5 6 5 8	COVER PANEL (FRONT)	1	1		
10	R 0 1 E 3 6 6 5 8	COVER PANEL (REAR)	1	1		
11	T 7 W E 3 0 6 6 1	SIDE PANEL (R)	1	1		
12	R 0 1 E 1 0 6 9 8	REAR GUARD	1	1		
13	R 0 1 E 5 9 1 3 0	MOTOR SUPPORT	1	1		
14	T 7 W E 0 4 6 1 7	CONDUIT PLATE	1	1		
15	R 0 1 A 1 3 0 0 5	BRAND LABEL	1	1		
16	T 7 W A 1 0 0 0 5	LABEL (H2I)	1	1		

## ELECTRICAL PARTS

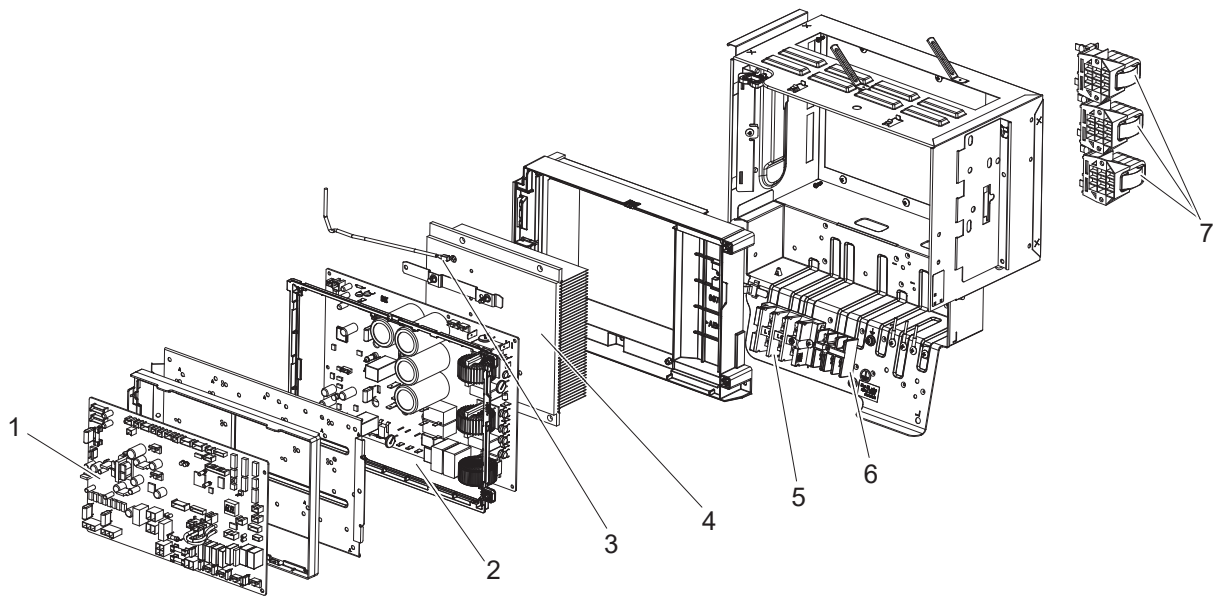


1. The part quantity below indicates the required number of pieces per unit.  
 2. The circled No. indicates that the part is not shown in the figure.

No.	Parts No.	Parts Name	SUZ-KA24NAHZ-R1	Wiring Diagram Symbol	Remarks
1	T 7 W S 9 7 3 1 5	CONTROLLER BOARD	1	C.B.	
2	T 7 W S 2 7 3 2 3	POWER BOARD	1	P.B.	
3	R 0 1 M 1 3 2 0 2	THERMISTOR (HS)	1	TH8	
4	T 7 W A 0 4 3 7 1	HEAT SINK	1		Includes SCREWS
5	T 7 W P 0 5 2 4 6	T.B./L1.L2.E	1	TB1 (L1/L2/E)	
6	T 7 W S 0 3 2 4 6	T.B./S1.S2.S3	1	TB2 (S1/S2/S3)	
7	T 7 W E 2 7 2 5 9	REACTOR	1	DCL	



## ELECTRICAL PARTS



1. The part quantity below indicates the required number of pieces per unit.  
 2. The circled No. indicates that the part is not shown in the figure.

No.	Parts No.	Parts Name	SUZ-KA30NAHZ1	SUZ-KA36NAHZ1	Wiring Diagram Symbol	Remarks
1	T 7 W S 9 2 3 1 5	CONTROLLER BOARD	1	1	C.B.	
2	T 7 W S 2 3 3 2 3	POWER BOARD	1	1	P.B.	
3	R 0 1 M 1 3 2 0 2	THERMISTOR (HS)	1	1	TH8	
4	R 0 1 A 2 2 3 7 1	HEAT SINK	1	1		Includes SCREWS
5	T 7 W P 0 5 2 4 6	T.B./L1.L2.E	1	1	TB1 (L1/L2/E)	
6	T 7 W S 0 3 2 4 6	T.B./S1.S2.S3	1	1	TB2 (S1/S2/S3)	
7	R 0 1 E 5 6 2 5 9	REACTOR	3	3	DCL	

# **mitsubishi electric corporation**

HEAD OFFICE: TOKYO BUILDING, 2-7-3, MARUNOUCHI, CHIYODA-KU, TOKYO 100-8310, JAPAN