

TECHNICAL DATA

R410A

[Model Name]

SUZ-KA24NAHZ

SUZ-KA30NAHZ1

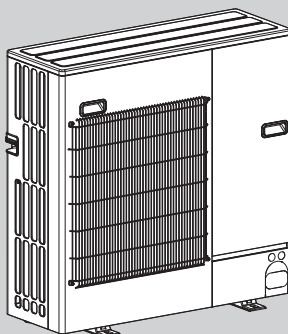
SUZ-KA36NAHZ1

[Service Ref.]

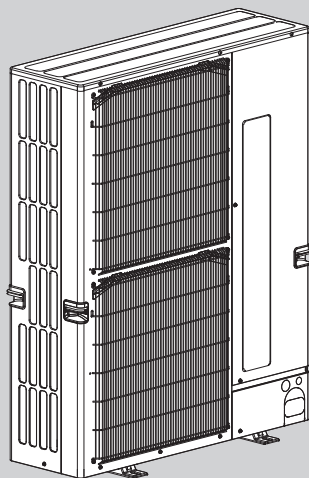
SUZ-KA24NAHZ-R1

SUZ-KA30NAHZ1

SUZ-KA36NAHZ1



SUZ-KA24NAHZ-R1



**SUZ-KA30NAHZ1
SUZ-KA36NAHZ1**

CONTENTS

1. SPECIFICATION.....	2
2. POSITION OF THE CENTER OF GRAVITY.....	4
3. CORRECTION FACTORS.....	4
4. DATA.....	5
5. CAPACITY CORRECTION RATIO CURVE FOR PIPING LENGTH	7
6. PART LOAD CAPACITY CHART.....	8

Model name	Indoor unit		PEAD-A24AA9	PEAD-A30AA9	PEAD-A36AA9
	Outdoor unit		SUZ-KA24NAHZ-R1	SUZ-KA30NAHZ1	SUZ-KA36NAHZ1
Cooling	Max. Capacity	Btu/h	24,000	30,000	33,000
	Rated Capacity	Btu/h	24,000	30,000	33,000
	Min. Capacity	Btu/h	10,100	14,600	15,200
	Total input	W	2,040	2,390	2,640
	EER2	Btu/h/W	11.7	12.5	12.5
	SEER2	Btu/h/W	16.7	17.8	15.2
	Moisture Removal	Pints/h	6.9	6.5	5.2
	SHF		0.68	0.76	0.84
Heating at 47°F	Power factor	%	93.0	90.0	91.0
	Max. Capacity	Btu/h	28,000	34,000	40,000
	Rated Capacity	Btu/h	25,000	32,000	38,000
	Min. Capacity	Btu/h	10,100	14,700	17,300
	Total input	W	2,310	3,120	3,290
	COP	W/W	3.5	3.1	3.5
	HSPF2 (IV/V)	Btu/h/W	9.4/7.9	8.6/7.2	9.3/7.7
	Power factor	%	92.0	90.0	91.0
Heating at 17°F	Rated Capacity	Btu/h	18,200	21,400	25,800
	Rated Total input	W	2,156	2,695	2,975
	Maximum Capacity	Btu/h	25,000	32,000	38,000
	Maximum Total Input	W	3,550	4,590	5,020
Power supply	Phase, Cycle, Voltage		1 phase, 60 Hz, 208/230 V		
	Breaker size	A	25	35	
Voltage	Indoor - Outdoor S1-S2		AC 208/230 V		
	Indoor - Outdoor S2-S3		DC 24 V		
	Indoor - Remote controller		DC 12 V		
Indoor unit	MCA	A	2.25		3.50
	MOP	A		15	
	Fan Motor MOC	A	1.80		2.80
	Fan Motor Output	W	121		300
	Air flow (LoLo-Lo-Mid-Hi)	CFM	512-565-636-742	618-671-742-883	848-936-1,024-1,201
	External Static Pressure	in WG	0.14-0.20-0.28-0.40-0.60		
	Sound Pressure Level (LoLo-Lo-Mid-Hi)	dB (A)	27-29-31-35	30-32-34-38	34-36-38-42
	External Finish Color		Galvanized		
	Dimensions	W: in	43-5/16		55-1/8
		D: in		28-7/8	
		H: in		9-7/8	
	Weight Unit	lbs	67		82
	Field drain pipe size	in		1-1/4	
	Refrigerant pipe Gas	in		5/8	
	Refrigerant pipe Liquid	in		3/8	
Outdoor unit	MCA	A	17	33	
	MOCP	A	27	55	
	SCCR	kA		5	
	Inverter input	A	10	22	
	Compressor	Model (Type)	DNB28FBAMT	ANB33FHGMT	
	Air flow (Cooling/Heating)	CFM	1,940/1,940	3,880/3,880	
	Refrigerant Control		Electronic expansion valve		
	Defrost Method		Reverse cycle		
	SPL (Cooling)	dB (A)		52	
	SPL (Heating)	dB (A)		53	
	External Finish Color		Ivory Munsell 3Y 7.8/1.1		
	Dimension	W: in	37-13/32	41-11/32	
		D: in		12-63/64+63/64	
		H: in	37-1/8	52-43/64	
	Weight	lbs	190	262	
Remote Controller	Type		Attached in indoor unit		
Refrigerant	Type		R410A		
	Charge	lbs, oz	7 lbs 11 oz	11 lbs 7 oz	
	Oil	Type (Fl.oz.)	FVC68D (34 oz)	FV50S (45 oz)	
Refrigerant Pipe Size	Gas side O.D.	in		5/8	
	Liquid side O.D.	in		3/8	
Refrigerant Pipe Length	Height Difference	ft		50	
	Length	ft		100	
Connection Method			Flared		
Operation Guarantee	Cooling	°F (°C)	* 0 to 115 (-18 to 46)		
	Heating	°F (°C)	-13 to 75 (-25 to 24)		

NOTES: 1. Rating conditions (cooling)-Indoor: D.B. 26.7°C (80°F), W.B. 19.4°C (67°F)
(heating)-Indoor: D.B. 21.1°C (70°F), W.B. 15.6°C (60°F)

Outdoor: D.B. 35°C (95°F), W.B. 23.9°C (75°F)
Outdoor: D.B. 8.3°C (47°F), W.B. 6.1°C (43°F)

2. Rating conditions (heating)-Indoor: D.B. 21.1°C (70°F), W.B. 15.6°C (60°F)

Outdoor: D.B. -8.3°C (17°F), W.B. -9.4°C (15°F)

Operating range

		Indoor intake air temperature	Outdoor intake air temperature
Cooling	Maximum	D.B. 32°C (90°F), W.B. 23°C (73°F)	D.B. 46°C (115°F)
	Minimum	D.B. 19°C (66°F), W.B. 15°C (59°F)	D.B. -5°C (23°F) D.B. -18°C (0°F)*
Heating	Maximum	D.B. 28°C (83°F)	D.B. 21.1°C (70°F), W.B. 15°C (59°F)
	Minimum	D.B. 10°C (50°F)	D.B. -25°C (-13°F), W.B. -25°C (-13°F)

* In case that the wind baffle is installed. (In case that the wind baffle is not installed, the minimum temperature will be -5°C (23°F) DB.)

Model name	Indoor unit		SVZ-KP24NA	SVZ-KP30NA	SVZ-KP36NA
	Outdoor unit		SUZ-KA24NAHZ-R1	SUZ-KA30NAHZ1	SUZ-KA36NAHZ1
Cooling	Max. Capacity	Btu/h	24,000	27,000	36,000
	Rated Capacity	Btu/h	24,000	27,000	36,000
	Min. Capacity	Btu/h	8,800	13,400	14,200
	Total input	W	2,420	2,100	3,760
	EER2	Btu/h/W	9.9	12.8	9.5
	SEER2	Btu/h/W	19.0	15.2	16.0
	Moisture Removal	Pints/h	4.7	4.1	8.4
	SHF		0.78	0.83	0.74
Power factor	%	97.0	96.0	97.0	
Heating at 47°F	Max. Capacity	Btu/h	28,800	34,000	40,000
	Rated Capacity	Btu/h	23,000	32,000	38,000
	Min. Capacity	Btu/h	9,400	14,800	13,800
	Total input	W	2,790	2,750	4,160
	COP	W/W	3.0	3.6	2.8
	HSPF (I/V)	Btu/h/W	8.4/7.2	8.7/7.3	9.0/8.5
	Power factor	%	97.0	97.0	98.0
Heating at 17°F	Rated Capacity	Btu/h	19,200	21,400	32,800
	Rated Total input	W	2,566	2,750	4,230
	Maximum Capacity	Btu/h	23,000	32,000	37,000
	Maximum Total Input	W	3,700	3,970	5,800
Power supply	Phase, Cycle, Voltage		1 phase, 60 Hz, 208/230 V		
	Breaker size	A	25	35	
Voltage	Indoor - Outdoor S1-S2		AC 208/230 V		
	Indoor - Outdoor S2-S3		DC 24 V		
	Indoor - Remote controller		DC 12 V		
Indoor unit	MCA	A	3.00	4.13	
	Fan Motor	F.L.A	2.40	3.30	
	Fan Motor Output	W	121	244	
	Air flow (Lo-Mid-Hi)	CFM	515-625-735	613-744-875	767-910-910
	External Static Pressure	in WG	0.3-0.5-0.8		
	Sound Pressure Level (Lo-Mid-Hi)	dB (A)	30-34-38	32-36-40	35-39-43
	External Finish Color		Galvanized steel cabinet - Powder coated Slate Gray		
	Dimensions	W: in	17	21	
		D: in	21-5/8		
		H: in	39-13/16	43-3/4	
	Weight Unit	lbs	141	172	
	Field drain pipe size	in	3/4		
	Refrigerant pipe Gas	in	5/8		
	Refrigerant pipe Liquid	in	3/8		
Outdoor unit	MCA	A	17	33	
	MOCP	A	27	55	
	SCCR	A	5		
	Inverter input	A	10	22	
	Compressor	Model (Type)	DNB28FBAMT	ANB33FHGMT	
	Air flow (Cooling/Heating)	CFM	1,940/1,940	3,880/3,880	
	Refrigerant Control		Electronic expansion valve		
	Defrost Method		Reverse cycle		
	SPL (Cooling)	dB (A)	52		
	SPL (Heating)	dB (A)	53		
	External Finish Color		Ivory Munsell 3Y 7.8/1.1		
	Dimension	W: in	37-13/32	41-11/32	
		D: in	12-63/64+63/64		
		H: in	37-1/8	52-43/64	
	Weight	lbs	190	262	
	Remote Controller	Type		Attached in indoor unit	
Refrigerant	Type		R410A		
	Charge	lbs, oz	7 lbs 11 oz	11 lbs 7 oz	
	Oil	Type (Fl.oz.)	FVC68D (34 oz)	FV50S (45 oz)	
Refrigerant Pipe Size	Gas side O.D.	in	5/8		
	Liquid side O.D.	in	3/8		
Refrigerant Pipe Length	Height Difference	ft	100		
	Length	ft	100		
Connection Method	Indoor/Outdoor		Flared/Flared		
Operation Guarantee	Cooling	°F (°C)	* 0 to 115 (-18 to 46)		
	Heating	°F (°C)	-13 to 75 (-25 to 24)		

NOTES: 1. Rating conditions (cooling)-Indoor: D.B. 26.7°C (80°F), W.B. 19.4°C (67°F)
 (heating)-Indoor: D.B. 21.1°C (70°F), W.B. 15.6°C (60°F)
 2. Rating conditions (heating)-Indoor: D.B. 21.1°C (70°F), W.B. 15.6°C (60°F)

Outdoor: D.B. 35°C (95°F), W.B. 23.9°C (75°F)
 Outdoor: D.B. 8.3°C (47°F), W.B. 6.1°C (43°F)
 Outdoor: D.B. -8.3°C (17°F), W.B. -9.4°C (15°F)

Operating range

		Indoor intake air temperature	Outdoor intake air temperature
Cooling	Maximum	D.B. 32°C (90°F), W.B. 23°C (73°F)	D.B. 46°C (115°F)
	Minimum	D.B. 19°C (66°F), W.B. 15°C (59°F)	D.B. -5°C (23°F) D.B. -18°C (0°F)*
Heating	Maximum	D.B. 28°C (83°F)	D.B. 21.1°C (70°F), W.B. 15°C (59°F)
	Minimum	D.B. 10°C (50°F)	D.B. -25°C (-13°F), W.B. -25°C (-13°F)

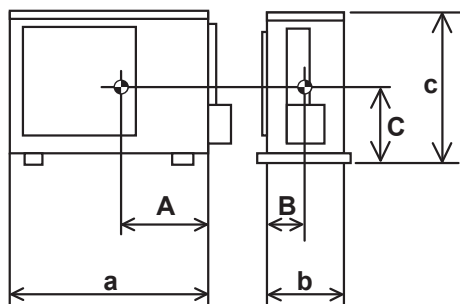
* In case that the wind baffle is installed. (In case that the wind baffle is not installed, the minimum temperature will be -5°C (23°F) DB.)

2

POSITION OF THE CENTER OF GRAVITY

2-1. OUTDOOR UNIT

Unit: inch(mm)



Model	A	B	C	a	b	c
SUZ-KA24NAHZ-R1	13-55/64 (352)	6-11/16 (170)	16-17/32 (420)	37-13/32 (950)	12-63/64 (330)	37-1/8 (943)
SUZ-KA30NAHZ1	16-1/16 (408)	6-27/64 (163)	21-1/16 (535)	41-11/32 (1,050)	12-63/64 (330)	52-43/64 (1,338)
SUZ-KA36NAHZ1	16-1/16 (408)	6-27/64 (163)	21-1/16 (535)	41-11/32 (1,050)	12-63/64 (330)	52-43/64 (1,338)

3

CORRECTION FACTORS

3-1. INVERTER TYPE

3-1.1 Cooling capacity corrections

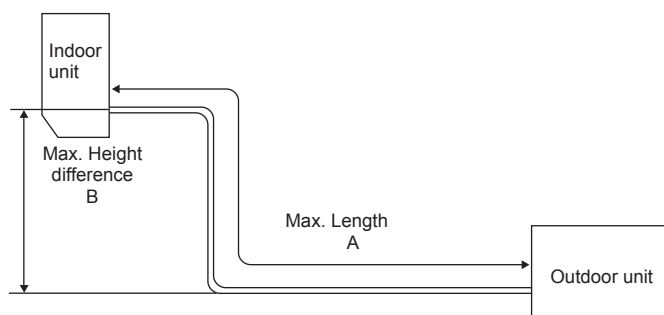
Model	Refrigerant piping length (one way: ft)			
	16 (std.)	33	70	100
SUZ-KA24NAHZ-R1	1.0	0.985	0.957	0.931
SUZ-KA30NAHZ1	1.0	0.985	0.957	0.931
SUZ-KA36NAHZ1	1.0	0.985	0.957	0.931

3-1.2 Heating capacity corrections

Model	Refrigerant piping length (one way: ft)			
	16 (std.)	33	70	100
SUZ-KA24NAHZ-R1	1.0	0.997	0.991	0.985
SUZ-KA30NAHZ1	1.0	0.997	0.991	0.985
SUZ-KA36NAHZ1	1.0	0.997	0.991	0.985

3-1.3 Max. refrigerant piping length & max. Height difference

Model	Refrigerant piping: ft		Piping size O.D: in	
	Max. Length A	Max. Height difference B	Gas	Liquid
SUZ-KA24NAHZ-R1	100	100	5/8	3/8
SUZ-KA30NAHZ1	100	100	5/8	3/8
SUZ-KA36NAHZ1	100	100	5/8	3/8

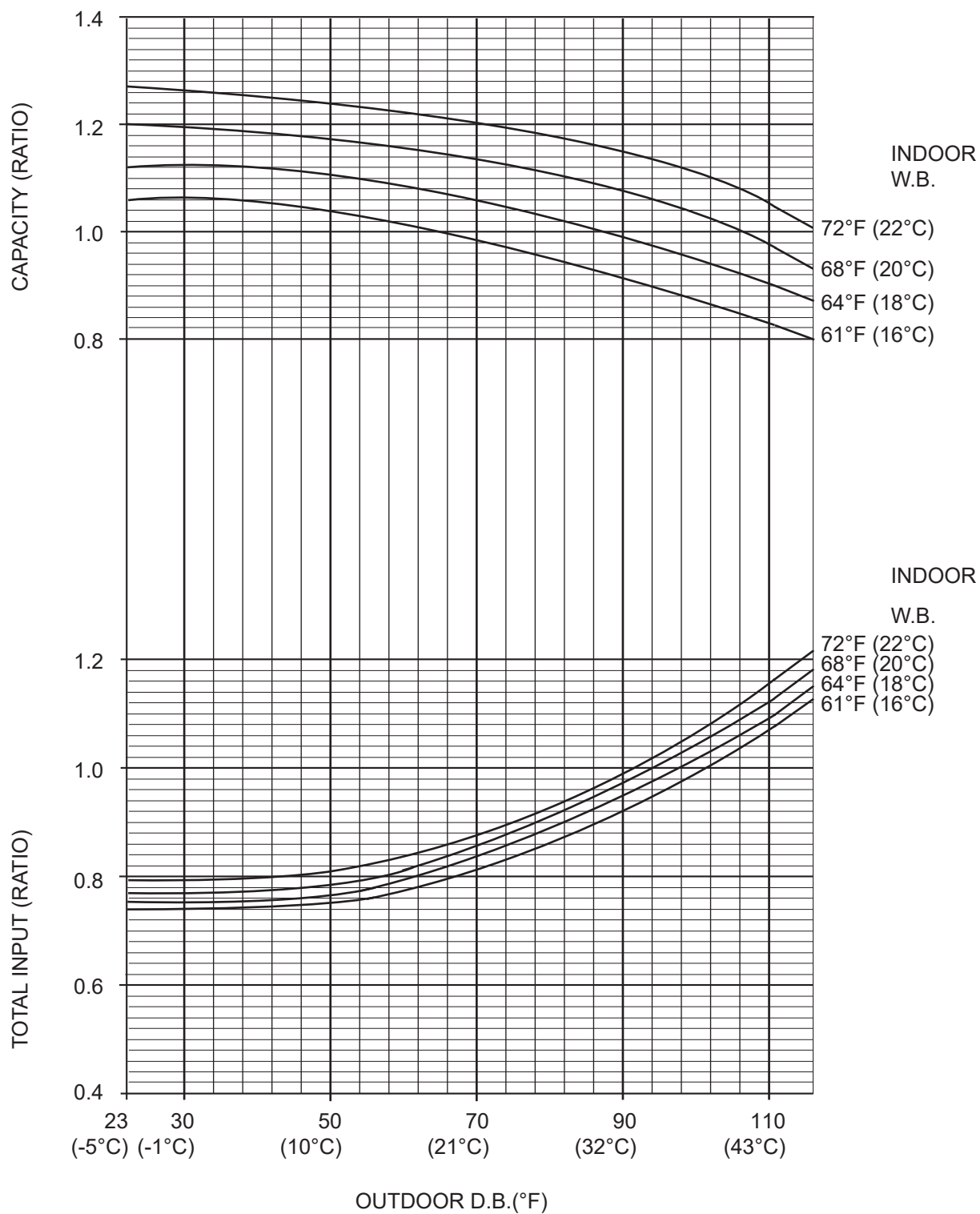


3-1.4 Additional refrigerant charge (R410A: oz.)

No additional refrigerant charge up to the maximum refrigerant piping length.

4-1. PERFORMANCE CURVE

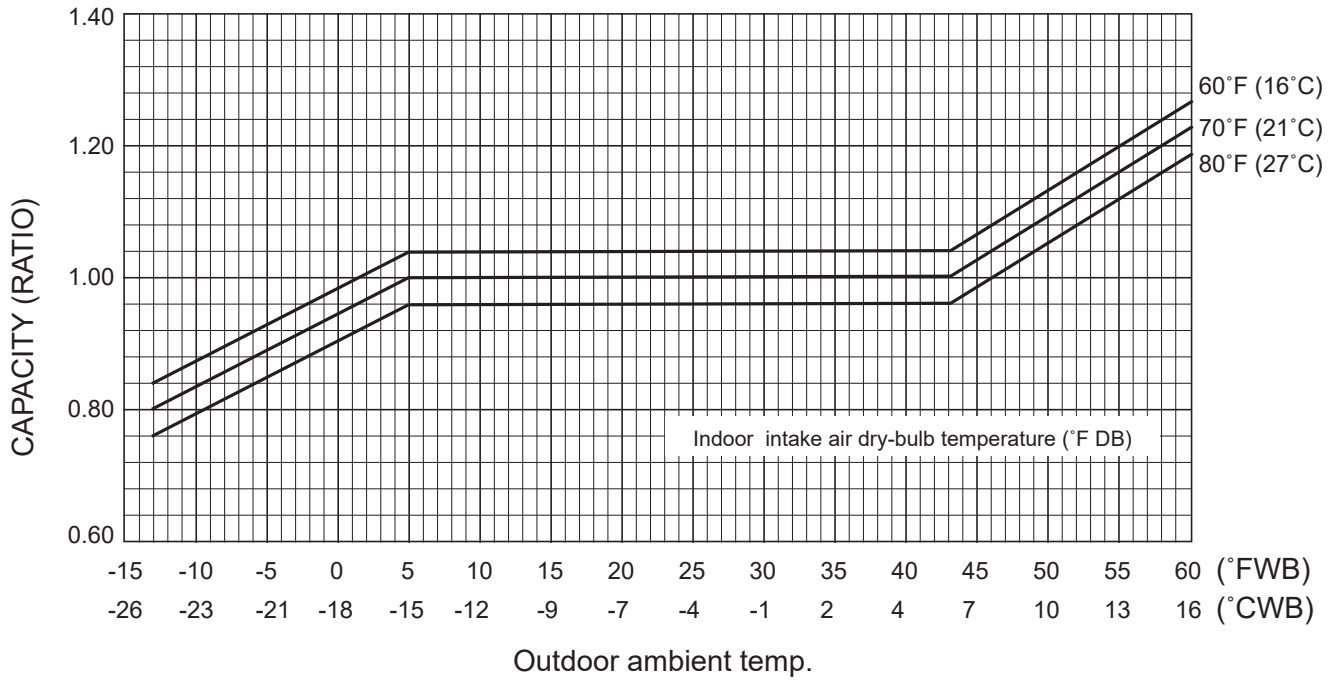
Cooling performance curve



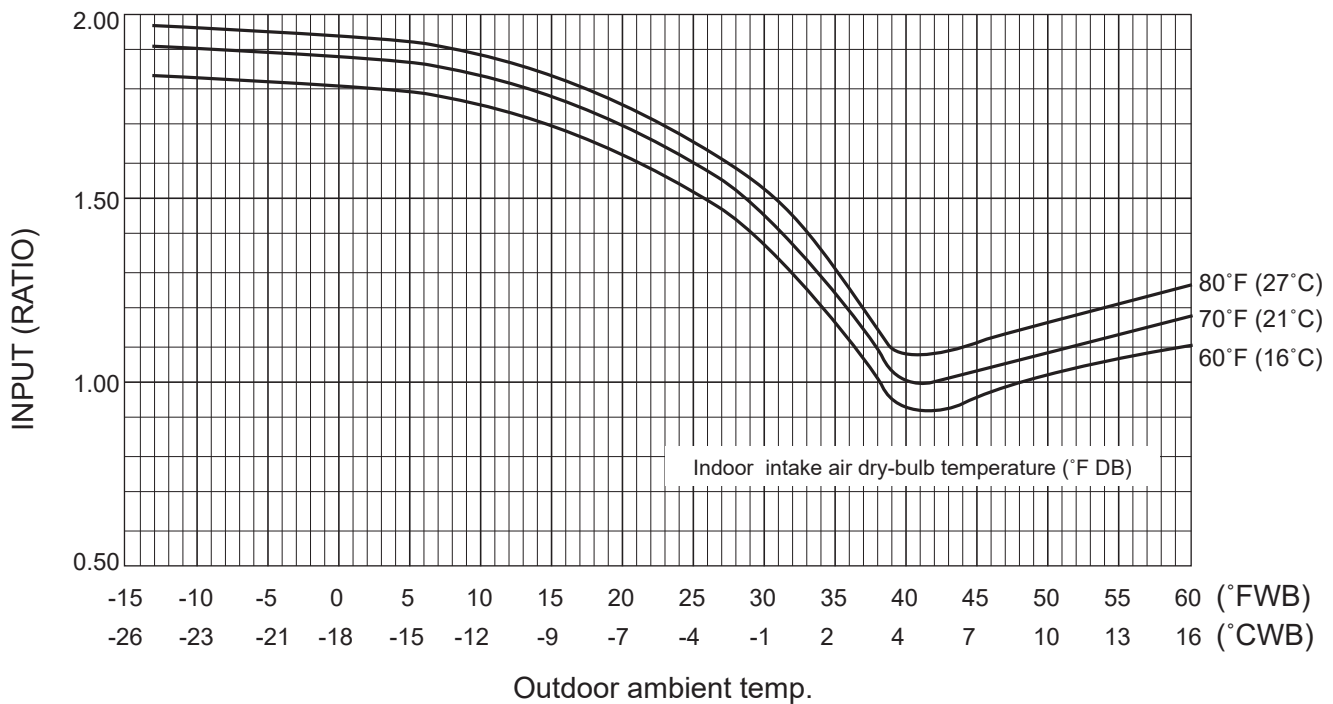
Note : This diagram shows the case where the operation frequency of a compressor is fixed.

Rated heating performance curve

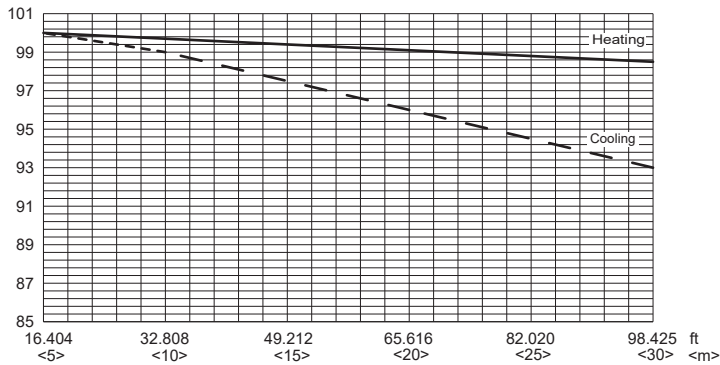
Rated heating capacity



Heating input



5-1. CAPACITY CORRECTION RATIO CURVE FOR PIPING LENGTH



The length intended for the capacity calculation, which counts the length of refrigerant piping and the number of bends, is called actual length.

Length of refrigerant piping (ft) + (Number of bends × 0.984 ft) = Actual length of refrigerant piping (ft)
 [Length of refrigerant piping (m) + (Number of bends × 0.3 m) = Actual length of refrigerant piping (m)]

PEAD-A24AA9

SUZ-KA24NAHZ-R1

Rated

Q(Btu/h): 24,000

W: 2,040

1) COOLING

Indoor W.B. Outdoor D.B. (°F) (°C)			71°F / 21.7°C						67°F / 19.4°C						63°F / 17.2°C					
			Max	Rated	75%	50%	25%	Min	Max	Rated	75%	50%	25%	Min	Max	Rated	75%	50%	25%	Min
115	46.1	Q(Btu/h)	24,192	24,192	18,144	12,096	-	10,080	22,320	22,320	16,740	11,160	-	9,300	20,952	20,952	15,714	10,476	-	8,730
		W	2,489	2,489	1,867	1,244	-	927	2,407	2,407	1,805	1,204	-	897	2,346	2,346	1,760	1,173	-	874
110	43.3	Q(Btu/h)	25,416	25,416	19,062	12,708	-	10,590	23,544	23,544	17,658	11,772	-	9,810	22,176	22,176	16,632	11,088	-	9,240
		W	2,362	2,362	1,772	1,181	-	880	2,281	2,281	1,711	1,140	-	850	2,220	2,220	1,665	1,110	-	827
105	40.6	Q(Btu/h)	25,944	25,944	19,458	12,972	-	10,810	24,072	24,072	18,054	12,036	-	10,030	22,704	22,704	17,028	11,352	-	9,460
		W	2,283	2,283	1,712	1,141	-	850	2,201	2,201	1,651	1,101	-	820	2,140	2,140	1,605	1,070	-	797
100	37.8	Q(Btu/h)	26,640	26,640	19,980	13,320	-	11,100	24,768	24,768	18,576	12,384	-	10,320	23,400	23,400	17,550	11,700	-	9,750
		W	2,173	2,173	1,629	1,086	-	809	2,091	2,091	1,568	1,046	-	779	2,030	2,030	1,522	1,015	-	756
95	35.0	Q(Btu/h)	27,216	27,216	20,412	13,608	-	11,340	25,344	25,344	19,008	12,672	-	10,560	23,976	23,976	17,982	11,988	-	9,990
		W	2,085	2,085	1,564	1,042	-	777	2,003	2,003	1,502	1,002	-	746	1,942	1,942	1,457	971	-	724
90	32.2	Q(Btu/h)	27,600	27,600	20,700	13,800	-	11,500	25,728	25,728	19,296	12,864	-	10,720	24,360	24,360	18,270	12,180	-	10,150
		W	2,020	2,020	1,515	1,010	-	752	1,938	1,938	1,454	969	-	722	1,877	1,877	1,408	938	-	699
85	29.4	Q(Btu/h)	27,888	27,888	20,916	13,944	-	11,620	26,016	26,016	19,512	13,008	-	10,840	24,648	24,648	18,486	12,324	-	10,270
		W	1,958	1,958	1,469	979	-	730	1,877	1,877	1,408	938	-	699	1,816	1,816	1,362	908	-	676
80	26.7	Q(Btu/h)	28,320	28,320	21,240	14,160	-	11,800	26,448	26,448	19,836	13,224	-	11,020	25,080	25,080	18,810	12,540	-	10,450
		W	1,893	1,893	1,420	947	-	705	1,812	1,812	1,359	906	-	675	1,750	1,750	1,313	875	-	652
75	23.9	Q(Btu/h)	28,632	28,632	21,474	14,316	-	11,930	26,760	26,760	20,070	13,380	-	11,150	25,392	25,392	19,044	12,696	-	10,580
		W	1,836	1,836	1,377	918	-	684	1,754	1,754	1,316	877	-	654	1,693	1,693	1,270	847	-	631
70	21.1	Q(Btu/h)	28,800	28,800	21,600	14,400	-	12,000	26,928	26,928	20,196	13,464	-	11,220	25,560	25,560	19,170	12,780	-	10,650
		W	1,791	1,791	1,343	896	-	667	1,710	1,710	1,282	855	-	637	1,648	1,648	1,236	824	-	614
67	19.4	Q(Btu/h)	28,992	28,992	21,744	14,496	-	12,080	27,120	27,120	20,340	13,560	-	11,300	25,752	25,752	19,314	12,876	-	10,730
		W	1,758	1,758	1,319	879	-	655	1,677	1,677	1,258	838	-	625	1,616	1,616	1,212	808	-	602

* It may not reach the above capacities in low ambient temperatures.

PEAD-A24AA9

SUZ-KA24NAHZ-R1

Rated

Q(Btu/h): 25,000

W: 1,950

2) HEATING

Indoor D.B.			77°F / 25.0°C							68°F / 20.0°C							59°F / 15.0°C						
Outdoor W.B.			Max	Rated	75%	50%	25%	Min	Max	Rated	75%	50%	25%	Min	Max	Rated	75%	50%	25%	Min			
(°F)	(°C)																						
65	18.3	Q(Btu/h)	35,736	31,908	23,931	15,954	-	13,018	36,772	32,833	24,624	16,416	-	13,396	37,948	33,883	25,412	16,941	-	13,824			
		W	3,026	2,555	1,916	1,277	-	838	2,818	2,399	1,799	1,199	-	787	2,657	2,243	1,682	1,121	-	736			
60	15.6	Q(Btu/h)	33,740	30,125	22,594	15,063	-	12,291	34,776	31,050	23,288	15,525	-	12,668	35,952	32,100	24,075	16,050	-	13,097			
		W	2,911	2,457	1,843	1,229	-	806	2,703	2,301	1,726	1,151	-	755	2,541	2,145	1,609	1,073	-	704			
55	12.8	Q(Btu/h)	31,500	28,125	21,094	14,063	-	11,475	32,536	29,050	21,788	14,525	-	11,852	33,712	30,100	22,575	15,050	-	12,281			
		W	2,795	2,379	1,784	1,190	-	781	2,587	2,223	1,667	1,112	-	730	2,426	2,067	1,550	1,034	-	678			
50	10.0	Q(Btu/h)	29,624	26,450	19,838	13,225	-	10,792	30,660	27,375	20,531	13,688	-	11,169	31,836	28,425	21,319	14,213	-	11,597			
		W	2,680	2,272	1,704	1,136	-	746	2,472	2,116	1,587	1,058	-	694	2,310	1,960	1,470	980	-	643			
45	7.2	Q(Btu/h)	24,625	24,500	18,375	12,250	-	9,996	25,625	25,425	19,069	12,713	-	10,373	26,625	26,475	19,856	13,238	-	10,802			
		W	2,564	2,145	1,609	1,073	-	704	2,356	1,989	1,492	995	-	653	2,195	1,833	1,375	917	-	602			
40	4.4	Q(Btu/h)	24,000	20,500	15,375	10,250	-	8,364	25,000	21,425	16,069	10,713	-	8,741	26,000	22,475	16,856	11,238	-	9,170			
		W	2,495	1,970	1,477	985	-	646	2,287	1,853	1,389	926	-	608	2,125	1,716	1,287	858	-	563			
35	1.7	Q(Btu/h)	24,000	17,750	13,313	8,875	-	7,242	25,000	19,750	14,813	9,875	-	8,058	26,000	21,000	15,750	10,500	-	8,568			
		W	2,659	1,856	1,392	928	-	609	2,536	1,739	1,305	870	-	571	2,373	1,603	1,202	801	-	526			
30	-1.1	Q(Btu/h)	24,000	17,000	12,750	8,500	-	6,936	25,000	17,900	13,425	8,950	-	7,303	26,000	18,650	13,988	9,325	-	7,609			
		W	3,129	1,693	1,269	846	-	556	3,007	1,576	1,182	788	-	517	2,843	1,439	1,079	720	-	472			
25	-3.9	Q(Btu/h)	24,000	16,250	12,188	8,125	-	6,630	25,000	17,150	12,863	8,575	-	6,997	26,000	17,900	13,425	8,950	-	7,303			
		W	3,395	1,472	1,104	736	-	483	3,273	1,355	1,016	678	-	445	3,109	1,219	914	609	-	400			
20	-6.7	Q(Btu/h)	24,000	15,500	11,625	7,750	-	6,324	25,000	16,400	12,300	8,200	-	6,691	26,000	17,150	12,863	8,575	-	6,997			
		W	3,579	1,443	1,082	722	-	474	3,457	1,326	995	663	-	435	3,293	1,190	892	595	-	390			
15	-9.4	Q(Btu/h)	24,000	15,125	11,344	7,563	-	6,171	25,000	16,025	12,019	8,013	-	6,538	26,000	16,775	12,581	8,388	-	6,844			
		W	3,743	1,375	1,031	687	-	451	3,620	1,258	943	629	-	413	3,457	1,121	841	561	-	368			
10	-12.2	Q(Btu/h)	24,000	14,550	10,913	7,275	-	5,936	25,000	15,450	11,588	7,725	-	6,304	26,000	16,200	12,150	8,100	-	6,610			
		W	3,845	1,271	954	636	-	417	3,722	1,154	866	577	-	379	3,559	1,018	763	509	-	334			
5	-15.0	Q(Btu/h)	24,000	14,238	10,678	7,119	-	5,809	25,000	15,138	11,353	7,569	-	6,176	26,000	15,888	11,916	7,944	-	6,482			
		W	3,927	1,267	950	633	-	416	3,804	1,150	862	575	-	377	3,641	1,013	760	507	-	333			
0	-17.8	Q(Btu/h)	22,625	14,000	10,500	7,000	-	5,712	23,625	14,900	11,175	7,450	-	6,079	24,625	15,650	11,738	7,825	-	6,385			
		W	3,968	1,270	952	635	-	417	3,845	1,153	865	576	-	378	3,682	1,016	762	508	-	334			
-4	-20.0	Q(Btu/h)	21,475	13,850	10,388	6,925	-	5,651	22,475	14,750	11,063	7,375	-	6,018	23,475	15,500	11,625	7,750	-	6,324			
		W	3,988	1,257	943	629	-	413	3,866	1,140	855	570	-	374	3,702	1,004	753	502	-	329			
-13	-25.0	Q(Btu/h)	19,000	13,719	10,289	6,860	-	5,597	20,000	14,619	10,964	7,310	-	5,965	21,000	15,369	11,527	7,685	-	6,271			
		W	4,009	1,237	928	619	-	406	3,886	1,120	840	560	-	368	3,722	984	738	492	-	323			

* Above data is for heating operation without any frost.

PEAD-A30AA9
SUZ-KA30NAHZ1
1) COOLING

Rated
Q(Btu/h): 30,000
W: 2,390

Indoor W.B. Outdoor D.B. (°F) (°C)			71°F / 21.7°C						67°F / 19.4°C						63°F / 17.2°C					
			Max	Rated	75%	50%	25%	Min	Max	Rated	75%	50%	25%	Min	Max	Rated	75%	50%	25%	Min
115	46.1	Q(Btu/h)	30,240	30,240	22,680	15,120	-	14,717	27,900	27,900	20,925	13,950	-	13,578	26,190	26,190	19,643	13,095	-	12,746
		W	2,916	2,916	2,187	1,458	-	1,232	2,820	2,820	2,115	1,410	-	1,192	2,749	2,749	2,061	1,374	-	1,162
110	43.3	Q(Btu/h)	31,770	31,770	23,828	15,885	-	15,461	29,430	29,430	22,073	14,715	-	14,323	27,720	27,720	20,790	13,860	-	13,490
		W	2,768	2,768	2,076	1,384	-	1,170	2,672	2,672	2,004	1,336	-	1,129	2,600	2,600	1,950	1,300	-	1,099
105	40.6	Q(Btu/h)	32,430	32,430	24,323	16,215	-	15,783	30,090	30,090	22,568	15,045	-	14,644	28,380	28,380	21,285	14,190	-	13,812
		W	2,674	2,674	2,006	1,337	-	1,130	2,579	2,579	1,934	1,289	-	1,090	2,507	2,507	1,880	1,254	-	1,059
100	37.8	Q(Btu/h)	33,300	33,300	24,975	16,650	-	16,206	30,960	30,960	23,220	15,480	-	15,067	29,250	29,250	21,938	14,625	-	14,235
		W	2,545	2,545	1,909	1,273	-	1,076	2,450	2,450	1,837	1,225	-	1,035	2,378	2,378	1,784	1,189	-	1,005
95	35.0	Q(Btu/h)	34,020	34,020	25,515	17,010	-	16,556	31,680	31,680	23,760	15,840	-	15,418	29,970	29,970	22,478	14,985	-	14,585
		W	2,443	2,443	1,832	1,221	-	1,032	2,347	2,347	1,760	1,173	-	992	2,275	2,275	1,706	1,138	-	962
90	32.2	Q(Btu/h)	34,500	34,500	25,875	17,250	-	16,790	32,160	32,160	24,120	16,080	-	15,651	30,450	30,450	22,838	15,225	-	14,819
		W	2,366	2,366	1,775	1,183	-	1,000	2,271	2,271	1,703	1,135	-	960	2,199	2,199	1,649	1,099	-	929
85	29.4	Q(Btu/h)	34,860	34,860	26,145	17,430	-	16,965	32,520	32,520	24,390	16,260	-	15,826	30,810	30,810	23,108	15,405	-	14,994
		W	2,294	2,294	1,721	1,147	-	970	2,199	2,199	1,649	1,099	-	929	2,127	2,127	1,595	1,064	-	899
80	26.7	Q(Btu/h)	35,400	35,400	26,550	17,700	-	17,228	33,060	33,060	24,795	16,530	-	16,089	31,350	31,350	23,513	15,675	-	15,257
		W	2,218	2,218	1,663	1,109	-	937	2,122	2,122	1,592	1,061	-	897	2,051	2,051	1,538	1,025	-	867
75	23.9	Q(Btu/h)	35,790	35,790	26,843	17,895	-	17,418	33,450	33,450	25,088	16,725	-	16,279	31,740	31,740	23,805	15,870	-	15,447
		W	2,151	2,151	1,613	1,076	-	909	2,055	2,055	1,542	1,028	-	869	1,984	1,984	1,488	992	-	838
70	21.1	Q(Btu/h)	36,000	36,000	27,000	18,000	-	17,520	33,660	33,660	25,245	16,830	-	16,381	31,950	31,950	23,963	15,975	-	15,549
		W	2,098	2,098	1,574	1,049	-	887	2,003	2,003	1,502	1,001	-	846	1,931	1,931	1,448	966	-	816
67	19.4	Q(Btu/h)	36,240	36,240	27,180	18,120	-	17,637	33,900	33,900	25,425	16,950	-	16,498	32,190	32,190	24,143	16,095	-	15,666
		W	2,060	2,060	1,545	1,030	-	871	1,965	1,965	1,473	982	-	830	1,893	1,893	1,420	946	-	800

* It may not reach the above capacities in low ambient temperatures.

PEAD-A30AA9
SUZ-KA30NAHZ1
2) HEATING

Rated
Q(Btu/h): 32,000
W: 2,830

Indoor D.B. Outdoor W.B. (°F) (°C)			77°F / 25.0°C						68°F / 20.0°C						59°F / 15.0°C					
			Max	Rated	75%	50%	25%	Min	Max	Rated	75%	50%	25%	Min	Max	Rated	75%	50%	25%	Min
65	18.3	Q(Btu/h)	43,394	40,842	30,631	20,421	-	18,889	44,652	42,026	31,519	21,013	-	19,437	46,080	43,370	32,527	21,685	-	20,058
		W	4,087	3,707	2,780	1,854	-	1,297	3,806	3,481	2,611	1,740	-	1,218	3,588	3,255	2,441	1,627	-	1,139
60	15.6	Q(Btu/h)	40,970	38,560	28,920	19,280	-	17,834	42,228	39,744	29,808	19,872	-	18,382	43,656	41,088	30,816	20,544	-	19,003
		W	3,931	3,566	2,674	1,783	-	1,247	3,650	3,339	2,505	1,670	-	1,168	3,432	3,113	2,335	1,557	-	1,089
55	12.8	Q(Btu/h)	38,250	36,000	27,000	18,000	-	16,650	39,508	37,184	27,888	18,592	-	17,198	40,936	38,528	28,896	19,264	-	17,819
		W	3,775	3,453	2,589	1,726	-	1,208	3,494	3,226	2,420	1,613	-	1,129	3,276	3,000	2,250	1,500	-	1,049
50	10.0	Q(Btu/h)	35,972	33,856	25,392	16,928	-	15,658	37,230	35,040	26,280	17,520	-	16,206	38,658	36,384	27,288	18,192	-	16,828
		W	3,619	3,297	2,473	1,648	-	1,153	3,338	3,071	2,303	1,535	-	1,074	3,120	2,844	2,133	1,422	-	995
45	7.2	Q(Btu/h)	31,520	31,360	23,520	15,680	-	14,504	32,800	32,544	24,408	16,272	-	15,052	34,080	33,888	25,416	16,944	-	15,673
		W	3,463	3,113	2,335	1,557	-	1,089	3,182	2,887	2,165	1,443	-	1,010	2,964	2,660	1,995	1,330	-	931
40	4.4	Q(Btu/h)	30,720	26,240	19,680	13,120	-	12,136	32,000	27,424	20,568	13,712	-	12,684	33,280	28,768	21,576	14,384	-	13,305
		W	3,370	2,858	2,144	1,429	-	1,000	3,089	2,689	2,016	1,344	-	941	2,870	2,490	1,868	1,245	-	871
35	1.7	Q(Btu/h)	30,720	22,720	17,040	11,360	-	10,508	32,000	25,280	18,960	12,640	-	11,692	33,280	26,880	20,160	13,440	-	12,432
		W	3,591	2,694	2,021	1,347	-	942	3,426	2,524	1,893	1,262	-	883	3,205	2,326	1,745	1,163	-	814
30	-1.1	Q(Btu/h)	30,720	21,760	16,320	10,880	-	10,064	32,000	22,912	17,184	11,456	-	10,597	33,280	23,872	17,904	11,936	-	11,041
		W	4,227	2,456	1,842	1,228	-	859	4,061	2,287	1,715	1,143	-	800	3,840	2,089	1,566	1,044	-	731
25	-3.9	Q(Btu/h)	30,720	20,800	15,600	10,400	-	9,620	32,000	21,952	16,464	10,976	-	10,153	33,280	22,912	17,184	11,456	-	10,597
		W	4,586	2,137	1,602	1,068	-	747	4,420	1,967	1,475	983	-	688	4,199	1,769	1,327	884	-	619
20	-6.7	Q(Btu/h)	30,720	19,840	14,880	9,920	-	9,176	32,000	20,992	15,744	10,496	-	9,709	33,280	21,952	16,464	10,976	-	10,153
		W	4,834	2,094	1,571	1,047	-	733	4,669	1,924	1,443	962	-	673	4,448	1,726	1,295	863	-	604
15	-9.4	Q(Btu/h)	30,720	19,360	14,520	9,680	-	8,954	32,000	20,512	15,384	10,256	-	9,487	33,280	21,472	16,104	10,736	-	9,931
		W	5,055	1,995	1,496	998	-	698	4,890	1,825	1,369	913	-	639	4,669	1,627	1,220	814	-	569
10	-12.2	Q(Btu/h)	30,720	18,624	13,968	9,312	-	8,614	32,000	19,776	14,832	9,888	-	9,146	33,280	20,736	15,552	10,368	-	9,590
		W	5,194	1,845	1,384	923	-	645	5,028	1,675	1,257	838	-	586	4,807	1,477	1,108	739	-	517
5	-15.0	Q(Btu/h)	30,720	18,224	13,668	9,112	-	8,429	32,000	19,376	14,532	9,688	-	8,961	33,280	20,336	15,252	10,168	-	9,405
		W	5,304	1,839	1,379	919	-	643	5,138	1,669	1,252	834	-	584	4,917	1,471	1,103	735	-	515
0	-17.8	Q(Btu/h)	28,960	17,920	13,440	8,960	-	8,288	30,240	19,072	14,304	9,536	-	8,821	31,520	20,032	15,024	10,016	-	9,265
		W	5,359	1,843	1,382	921	-	645	5,194	1,673	1,255	837	-	585	4,973	1,475	1,106	737	-	516
-4	-20.0	Q(Btu/h)	27,488	17,728	13,296	8,864	-	8,199	28,768	18,880	14,160	9,440	-	8,732	30,048	19,840	14,880	9,920	-	9,176
		W	5,387	1,824	1,368	912	-	638	5,221	1,655	1,241	827	-	579	5,000	1,457	1,092	728	-	510
-13	-25.0	Q(Btu/h)	24,320	17,561	13,171	8,780	-	8,122	25,600	18,713	14,035	9,356	-	8,655	26,880	19,673	14,755	9,836	-	9,099
		W	5,415	1,796	1,347	898	-	628	5,249	1,626	1,219	813	-	569	5,028	1,428	1,071	714	-	499

* Above data is for heating operation without any frost.

PEAD-A36AA9
SUZ-KA36NAHZ1
1) COOLING

Rated
Q(Btu/h): 33,000
W: 2,640

Indoor W.B. Outdoor D.B. (°F) (°C)			71°F / 21.7°C						67°F / 19.4°C						63°F / 17.2°C					
			Max	Rated	75%	50%	25%	Min	Max	Rated	75%	50%	25%	Min	Max	Rated	75%	50%	25%	Min
115	46.1	Q(Btu/h)	33,264	33,264	24,948	16,632	-	15,322	30,690	30,690	23,018	15,345	-	14,136	28,809	28,809	21,607	14,405	-	13,270
		W	3,221	3,221	2,416	1,610	-	1,342	3,115	3,115	2,336	1,558	-	1,298	3,036	3,036	2,277	1,518	-	1,265
110	43.3	Q(Btu/h)	34,947	34,947	26,210	17,474	-	16,097	32,373	32,373	24,280	16,187	-	14,911	30,492	30,492	22,869	15,246	-	14,045
		W	3,057	3,057	2,293	1,529	-	1,274	2,952	2,952	2,214	1,476	-	1,230	2,872	2,872	2,154	1,436	-	1,197
105	40.6	Q(Btu/h)	35,673	35,673	26,755	17,837	-	16,431	33,099	33,099	24,824	16,550	-	15,246	31,218	31,218	23,414	15,609	-	14,379
		W	2,954	2,954	2,216	1,477	-	1,231	2,849	2,849	2,136	1,424	-	1,187	2,769	2,769	2,077	1,385	-	1,154
100	37.8	Q(Btu/h)	36,630	36,630	27,473	18,315	-	16,872	34,056	34,056	25,542	17,028	-	15,686	32,175	32,175	24,131	16,088	-	14,820
		W	2,812	2,812	2,109	1,406	-	1,172	2,706	2,706	2,030	1,353	-	1,128	2,627	2,627	1,970	1,313	-	1,095
95	35.0	Q(Btu/h)	37,422	37,422	28,067	18,711	-	17,237	34,848	34,848	26,136	17,424	-	16,051	32,967	32,967	24,725	16,484	-	15,185
		W	2,698	2,698	2,024	1,349	-	1,124	2,592	2,592	1,944	1,296	-	1,080	2,513	2,513	1,885	1,257	-	1,047
90	32.2	Q(Btu/h)	37,950	37,950	28,463	18,975	-	17,480	35,376	35,376	26,532	17,688	-	16,294	33,495	33,495	25,121	16,748	-	15,428
		W	2,614	2,614	1,960	1,307	-	1,089	2,508	2,508	1,881	1,254	-	1,045	2,429	2,429	1,822	1,214	-	1,012
85	29.4	Q(Btu/h)	38,346	38,346	28,760	19,173	-	17,662	35,772	35,772	26,829	17,886	-	16,477	33,891	33,891	25,418	16,946	-	15,610
		W	2,534	2,534	1,901	1,267	-	1,056	2,429	2,429	1,822	1,214	-	1,012	2,350	2,350	1,762	1,175	-	979
80	26.7	Q(Btu/h)	38,940	38,940	29,205	19,470	-	17,936	36,366	36,366	27,275	18,183	-	16,750	34,485	34,485	25,864	17,243	-	15,884
		W	2,450	2,450	1,837	1,225	-	1,021	2,344	2,344	1,758	1,172	-	977	2,265	2,265	1,699	1,133	-	944
75	23.9	Q(Btu/h)	39,369	39,369	29,527	19,685	-	18,134	36,795	36,795	27,596	18,398	-	16,948	34,914	34,914	26,186	17,457	-	16,082
		W	2,376	2,376	1,782	1,188	-	990	2,270	2,270	1,703	1,135	-	946	2,191	2,191	1,643	1,096	-	913
70	21.1	Q(Btu/h)	39,600	39,600	29,700	19,800	-	18,240	37,026	37,026	27,770	18,513	-	17,054	35,145	35,145	26,359	17,573	-	16,188
		W	2,318	2,318	1,738	1,159	-	966	2,212	2,212	1,659	1,106	-	922	2,133	2,133	1,600	1,067	-	889
67	19.4	Q(Btu/h)	39,864	39,864	29,898	19,932	-	18,362	37,290	37,290	27,968	18,645	-	17,176	35,409	35,409	26,557	17,705	-	16,310
		W	2,276	2,276	1,707	1,138	-	948	2,170	2,170	1,628	1,085	-	904	2,091	2,091	1,568	1,045	-	871

* It may not reach the above capacities in low ambient temperatures.

PEAD-A36AA9
SUZ-KA36NAHZ1
2) HEATING

Rated
Q(Btu/h): 38,000
W: 2,970

Indoor D.B.			77°F / 25.0°C							68°F / 20.0°C							59°F / 15.0°C						
Outdoor W.B.			Max	Rated	75%	50%	25%	Min	Max	Rated	75%	50%	25%	Min	Max	Rated	75%	50%	25%	Min			
(°F)	(°C)																						
65	18.3	Q(Btu/h)	51,052	48,499	36,375	24,250	-	22,208	52,532	49,905	37,429	24,953	-	22,851	54,212	51,501	38,626	25,751	-	23,582			
		W	4,310	3,891	2,918	1,945	-	1,349	4,014	3,653	2,740	1,827	-	1,267	3,784	3,416	2,562	1,708	-	1,185			
60	15.6	Q(Btu/h)	48,200	45,790	34,343	22,895	-	20,967	49,680	47,196	35,397	23,598	-	21,611	51,360	48,792	36,594	24,396	-	22,342			
		W	4,145	3,742	2,807	1,871	-	1,298	3,849	3,505	2,628	1,752	-	1,215	3,619	3,267	2,450	1,634	-	1,133			
55	12.8	Q(Btu/h)	45,000	42,750	32,063	21,375	-	19,575	46,480	44,156	33,117	22,078	-	20,219	48,160	45,752	34,314	22,876	-	20,950			
		W	3,981	3,623	2,718	1,812	-	1,257	3,685	3,386	2,539	1,693	-	1,174	3,455	3,148	2,361	1,574	-	1,092			
50	10.0	Q(Btu/h)	42,320	40,204	30,153	20,102	-	18,409	43,800	41,610	31,208	20,805	-	19,053	45,480	43,206	32,405	21,603	-	19,784			
		W	3,816	3,460	2,595	1,730	-	1,200	3,520	3,222	2,417	1,611	-	1,118	3,290	2,985	2,239	1,492	-	1,035			
45	7.2	Q(Btu/h)	36,445	37,240	27,930	18,620	-	17,052	37,925	38,646	28,985	19,323	-	17,696	39,405	40,242	30,182	20,121	-	18,427			
		W	3,652	3,267	2,450	1,634	-	1,133	3,356	3,029	2,272	1,515	-	1,051	3,126	2,792	2,094	1,396	-	968			
40	4.4	Q(Btu/h)	35,520	31,160	23,370	15,580	-	14,268	37,000	32,566	24,425	16,283	-	14,912	38,480	34,162	25,622	17,081	-	15,643			
		W	3,553	3,000	2,250	1,500	-	1,040	3,257	2,822	2,116	1,411	-	979	3,027	2,614	1,960	1,307	-	906			
35	1.7	Q(Btu/h)	35,520	26,980	20,235	13,490	-	12,354	37,000	30,020	22,515	15,010	-	13,746	38,480	31,920	23,940	15,960	-	14,616			
		W	4,010	2,827	2,121	1,414	-	981	3,825	2,649	1,987	1,325	-	919	3,578	2,441	1,831	1,221	-	847			
30	-1.1	Q(Btu/h)	35,520	25,840	19,380	12,920	-	11,832	37,000	27,208	20,406	13,604	-	12,458	38,480	28,348	21,261	14,174	-	12,980			
		W	4,719	2,578	1,933	1,289	-	894	4,534	2,400	1,800	1,200	-	832	4,287	2,192	1,644	1,096	-	760			
25	-3.9	Q(Btu/h)	35,520	24,700	18,525	12,350	-	11,310	37,000	26,068	19,551	13,034	-	11,936	38,480	27,208	20,406	13,604	-	12,458			
		W	5,120	2,242	1,682	1,121	-	778	4,935	2,064	1,548	1,032	-	716	4,688	1,856	1,392	928	-	644			
20	-6.7	Q(Btu/h)	35,520	23,560	17,670	11,780	-	10,788	37,000	24,928	18,696	12,464	-	11,414	38,480	26,068	19,551	13,034	-	11,936			
		W	5,398	2,198	1,648	1,099	-	762	5,213	2,020	1,515	1,010	-	700	4,966	1,812	1,359	906	-	628			
15	-9.4	Q(Btu/h)	35,520	22,990	17,243	11,495	-	10,527	37,000	24,358	18,269	12,179	-	11,153	38,480	25,498	19,124	12,749	-	11,675			
		W	5,644	2,094	1,570	1,047	-	726	5,459	1,916	1,437	958	-	664	5,213	1,708	1,281	854	-	592			
10	-12.2	Q(Btu/h)	35,520	22,116	16,587	11,058	-	10,127	37,000	23,484	17,613	11,742	-	10,753	38,480	24,624	18,468	12,312	-	11,275			
		W	5,799	1,936	1,452	968	-	672	5,614	1,758	1,319	879	-	610	5,367	1,550	1,163	775	-	538			
5	-15.0	Q(Btu/h)	35,520	21,641	16,231	10,821	-	9,909	37,000	23,009	17,257	11,505	-	10,536	38,480	24,149	18,112	12,075	-	11,058			
		W	5,922	1,930	1,447	965	-	669	5,737	1,751	1,314	876	-	607	5,490	1,544	1,158	772	-	535			
0	-17.8	Q(Btu/h)	33,485	21,280	15,960	10,640	-	9,744	34,965	22,648	16,986	11,324	-	10,370	36,445	23,788	17,841	11,894	-	10,892			
		W	5,984	1,934	1,451	967	-	671	5,799	1,756	1,317	878	-	609	5,552	1,548	1,161	774	-	537			
-4	-20.0	Q(Btu/h)	31,783	21,052	15,789	10,526	-	9,640	33,263	22,420	16,815	11,210	-	10,266	34,743	23,560	17,670	11,780	-	10,788			
		W	6,015	1,915	1,436	957	-	664	5,829	1,736	1,302	868	-	602	5,583	1,529	1,146	764	-	530			
-13	-25.0	Q(Btu/h)	28,120	20,853	15,640	10,427	-	9,549	29,600	22,221	16,666	11,111	-	10,175	31,080	23,361	17,521	11,681	-	10,697			
		W	6,045	1,884	1,413	942	-	653	5,860	1,706	1,280	853	-	592	5,614	1,498	1,124	749	-	520			

* Above data is for heating operation without any frost.

SVZ-KP24NA

SUZ-KA24NAHZ-R1

Rated
Q(Btu/h): 24,000
W: 2,420

1) COOLING

Indoor W.B. Outdoor D.B. (°F) (°C)			71°F / 21.7°C						67°F / 19.4°C						63°F / 17.2°C					
			Max	Rated	75%	50%	25%	Min	Max	Rated	75%	50%	25%	Min	Max	Rated	75%	50%	25%	Min
115	46.1	Q(Btu/h)	24,192	24,192	18,144	12,096	-	8,870	22,320	22,320	16,740	11,160	-	8,184	20,952	20,952	15,714	10,476	-	7,682
		W	2,952	2,952	2,214	1,476	-	793	2,856	2,856	2,142	1,428	-	767	2,783	2,783	2,087	1,392	-	748
110	43.3	Q(Btu/h)	25,416	25,416	19,062	12,708	-	9,319	23,544	23,544	17,658	11,772	-	8,633	22,176	22,176	16,632	11,088	-	8,131
		W	2,802	2,802	2,102	1,401	-	753	2,706	2,706	2,029	1,353	-	727	2,633	2,633	1,975	1,316	-	707
105	40.6	Q(Btu/h)	25,944	25,944	19,458	12,972	-	9,513	24,072	24,072	18,054	12,036	-	8,826	22,704	22,704	17,028	11,352	-	8,325
		W	2,708	2,708	2,031	1,354	-	727	2,611	2,611	1,958	1,306	-	701	2,539	2,539	1,904	1,269	-	682
100	37.8	Q(Btu/h)	26,640	26,640	19,980	13,320	-	9,768	24,768	24,768	18,576	12,384	-	9,082	23,400	23,400	17,550	11,700	-	8,580
		W	2,577	2,577	1,933	1,289	-	692	2,481	2,481	1,860	1,240	-	666	2,408	2,408	1,806	1,204	-	647
95	35.0	Q(Btu/h)	27,216	27,216	20,412	13,608	-	9,979	25,344	25,344	19,008	12,672	-	9,293	23,976	23,976	17,982	11,988	-	8,791
		W	2,473	2,473	1,855	1,237	-	664	2,376	2,376	1,782	1,188	-	638	2,304	2,304	1,728	1,152	-	619
90	32.2	Q(Btu/h)	27,600	27,600	20,700	13,800	-	10,120	25,728	25,728	19,296	12,864	-	9,434	24,360	24,360	18,270	12,180	-	8,932
		W	2,396	2,396	1,797	1,198	-	644	2,299	2,299	1,724	1,150	-	618	2,226	2,226	1,670	1,113	-	598
85	29.4	Q(Btu/h)	27,888	27,888	20,916	13,944	-	10,226	26,016	26,016	19,512	13,008	-	9,539	24,648	24,648	18,486	12,324	-	9,038
		W	2,323	2,323	1,742	1,162	-	624	2,226	2,226	1,670	1,113	-	598	2,154	2,154	1,615	1,077	-	579
80	26.7	Q(Btu/h)	28,320	28,320	21,240	14,160	-	10,384	26,448	26,448	19,836	13,224	-	9,698	25,080	25,080	18,810	12,540	-	9,196
		W	2,246	2,246	1,684	1,123	-	603	2,149	2,149	1,612	1,074	-	577	2,076	2,076	1,557	1,038	-	558
75	23.9	Q(Btu/h)	28,632	28,632	21,474	14,316	-	10,498	26,760	26,760	20,070	13,380	-	9,812	25,392	25,392	19,044	12,696	-	9,310
		W	2,178	2,178	1,634	1,089	-	585	2,081	2,081	1,561	1,041	-	559	2,009	2,009	1,506	1,004	-	540
70	21.1	Q(Btu/h)	28,800	28,800	21,600	14,400	-	10,560	26,928	26,928	20,196	13,464	-	9,874	25,560	25,560	19,170	12,780	-	9,372
		W	2,125	2,125	1,594	1,062	-	571	2,028	2,028	1,521	1,014	-	545	1,955	1,955	1,467	978	-	525
67	19.4	Q(Btu/h)	28,992	28,992	21,744	14,496	-	10,630	27,120	27,120	20,340	13,560	-	9,944	25,752	25,752	19,314	12,876	-	9,442
		W	2,086	2,086	1,565	1,043	-	560	1,989	1,989	1,492	995	-	534	1,917	1,917	1,437	958	-	515

* It may not reach the above capacities in low ambient temperatures.

SVZ-KP24NA

SUZ-KA24NAHZ-R1

Rated

Q(Btu/h): 23,000

W: 2,140

2) HEATING

Indoor D.B.		77°F / 25.0°C							68°F / 20.0°C							59°F / 15.0°C						
Outdoor W.B.		Max	Rated	75%	50%	25%	Min		Max	Rated	75%	50%	25%	Min		Max	Rated	75%	50%	25%	Min	
(°F)	(°C)																					
65	18.3	Q(Btu/h)	36,757	29,355	22,016	14,677	-	11,997	37,823	30,206	22,654	15,103	-	12,345	39,033	31,172	23,379	15,586	-	12,740		
		W	3,655	2,803	2,103	1,402	-	707	3,404	2,632	1,974	1,316	-	664	3,209	2,461	1,846	1,231	-	621		
60	15.6	Q(Btu/h)	34,704	27,715	20,786	13,858	-	11,327	35,770	28,566	21,425	14,283	-	11,675	36,979	29,532	22,149	14,766	-	12,070		
		W	3,515	2,696	2,022	1,348	-	680	3,264	2,525	1,894	1,263	-	637	3,069	2,354	1,766	1,177	-	594		
55	12.8	Q(Btu/h)	32,400	25,875	19,406	12,938	-	10,575	33,466	26,726	20,045	13,363	-	10,923	34,675	27,692	20,769	13,846	-	11,318		
		W	3,376	2,611	1,958	1,305	-	659	3,125	2,440	1,830	1,220	-	616	2,930	2,268	1,701	1,134	-	572		
50	10.0	Q(Btu/h)	30,470	24,334	18,251	12,167	-	9,945	31,536	25,185	18,889	12,593	-	10,293	32,746	26,151	19,613	13,076	-	10,688		
		W	3,236	2,493	1,870	1,247	-	629	2,985	2,322	1,741	1,161	-	586	2,790	2,151	1,613	1,075	-	543		
45	7.2	Q(Btu/h)	22,655	22,540	16,905	11,270	-	9,212	23,575	23,391	17,543	11,696	-	9,560	24,495	24,357	18,268	12,179	-	9,955		
		W	3,097	2,354	1,766	1,177	-	594	2,846	2,183	1,637	1,091	-	551	2,651	2,012	1,509	1,006	-	508		
40	4.4	Q(Btu/h)	22,080	18,860	14,145	9,430	-	7,708	23,000	19,711	14,783	9,856	-	8,056	23,920	20,677	15,508	10,339	-	8,451		
		W	3,013	2,161	1,621	1,081	-	545	2,762	2,033	1,525	1,017	-	513	2,567	1,883	1,412	942	-	475		
35	1.7	Q(Btu/h)	22,080	16,330	12,248	8,165	-	6,674	23,000	18,170	13,628	9,085	-	7,426	23,920	19,320	14,490	9,660	-	7,896		
		W	2,834	2,037	1,528	1,019	-	514	2,703	1,909	1,432	954	-	482	2,528	1,759	1,319	880	-	444		
30	-1.1	Q(Btu/h)	22,080	15,640	11,730	7,820	-	6,392	23,000	16,468	12,351	8,234	-	6,730	23,920	17,158	12,869	8,579	-	7,012		
		W	3,335	1,858	1,393	929	-	469	3,204	1,729	1,297	865	-	436	3,030	1,579	1,184	790	-	399		
25	-3.9	Q(Btu/h)	22,080	14,950	11,213	7,475	-	6,110	23,000	15,778	11,834	7,889	-	6,448	23,920	16,468	12,351	8,234	-	6,730		
		W	3,618	1,616	1,212	808	-	408	3,488	1,487	1,115	744	-	375	3,313	1,338	1,003	669	-	338		
20	-6.7	Q(Btu/h)	22,080	14,260	10,695	7,130	-	5,828	23,000	15,088	11,316	7,544	-	6,166	23,920	15,778	11,834	7,889	-	6,448		
		W	3,814	1,584	1,188	792	-	400	3,684	1,455	1,091	728	-	367	3,509	1,305	979	653	-	329		
15	-9.4	Q(Btu/h)	22,080	13,915	10,436	6,958	-	5,687	23,000	14,743	11,057	7,372	-	6,025	23,920	15,433	11,575	7,717	-	6,307		
		W	3,989	1,509	1,132	754	-	381	3,858	1,380	1,035	690	-	348	3,684	1,231	923	615	-	311		
10	-12.2	Q(Btu/h)	22,080	13,386	10,040	6,693	-	5,471	23,000	14,214	10,661	7,107	-	5,809	23,920	14,904	11,178	7,452	-	6,091		
		W	4,098	1,395	1,046	698	-	352	3,967	1,267	950	633	-	320	3,793	1,117	838	559	-	282		
5	-15.0	Q(Btu/h)	22,080	13,099	9,824	6,549	-	5,353	23,000	13,927	10,445	6,963	-	5,692	23,920	14,617	10,962	7,308	-	5,974		
		W	4,185	1,390	1,043	695	-	351	4,054	1,262	946	631	-	318	3,880	1,112	834	556	-	281		
0	-17.8	Q(Btu/h)	20,815	12,880	9,660	6,440	-	5,264	21,735	13,708	10,281	6,854	-	5,602	22,655	14,398	10,799	7,199	-	5,884		
		W	4,229	1,394	1,045	697	-	352	4,098	1,265	949	633	-	319	3,923	1,115	837	558	-	281		
-4	-20.0	Q(Btu/h)	19,757	12,742	9,557	6,371	-	5,208	20,677	13,570	10,178	6,785	-	5,546	21,597	14,260	10,695	7,130	-	5,828		
		W	4,250	1,380	1,035	690	-	348	4,120	1,251	938	626	-	316	3,945	1,101	826	551	-	278		
-13	-25.0	Q(Btu/h)	17,480	12,622	9,466	6,311	-	5,158	18,400	13,450	10,087	6,725	-	5,497	19,320	14,140	10,605	7,070	-	5,779		
		W	4,272	1,358	1,018	679	-	343	4,141	1,229	922	615	-	310	3,967	1,080	810	540	-	272		

* Above data is for heating operation without any frost.

SVZ-KP30NA

SUZ-KA30NAHZ1

1) COOLING

Rated

Q(Btu/h): 27,000

W: 2,100

Indoor W.B. Outdoor D.B. (°F) (°C)			71°F / 21.7°C						67°F / 19.4°C						63°F / 17.2°C					
			Max	Rated	75%	50%	25%	Min	Max	Rated	75%	50%	25%	Min	Max	Rated	75%	50%	25%	Min
115	46.1	Q(Btu/h)	27,216	27,216	20,412	13,608	-	13,507	25,110	25,110	18,833	12,555	-	12,462	23,571	23,571	17,678	11,786	-	11,698
		W	2,562	2,562	1,922	1,281	-	1,086	2,478	2,478	1,859	1,239	-	1,050	2,415	2,415	1,811	1,208	-	1,024
110	43.3	Q(Btu/h)	28,593	28,593	21,445	14,297	-	14,191	26,487	26,487	19,865	13,244	-	13,145	24,948	24,948	18,711	12,474	-	12,382
		W	2,432	2,432	1,824	1,216	-	1,031	2,348	2,348	1,761	1,174	-	995	2,285	2,285	1,714	1,142	-	968
105	40.6	Q(Btu/h)	29,187	29,187	21,890	14,594	-	14,485	27,081	27,081	20,311	13,541	-	13,440	25,542	25,542	19,157	12,771	-	12,676
		W	2,350	2,350	1,762	1,175	-	996	2,266	2,266	1,699	1,133	-	960	2,203	2,203	1,652	1,101	-	934
100	37.8	Q(Btu/h)	29,970	29,970	22,478	14,985	-	14,874	27,864	27,864	20,898	13,932	-	13,829	26,325	26,325	19,744	13,163	-	13,065
		W	2,237	2,237	1,677	1,118	-	948	2,153	2,153	1,614	1,076	-	912	2,090	2,090	1,567	1,045	-	886
95	35.0	Q(Btu/h)	30,618	30,618	22,964	15,309	-	15,196	28,512	28,512	21,384	14,256	-	14,150	26,973	26,973	20,230	13,487	-	13,387
		W	2,146	2,146	1,610	1,073	-	910	2,062	2,062	1,547	1,031	-	874	1,999	1,999	1,499	1,000	-	847
90	32.2	Q(Btu/h)	31,050	31,050	23,288	15,525	-	15,410	28,944	28,944	21,708	14,472	-	14,365	27,405	27,405	20,554	13,703	-	13,601
		W	2,079	2,079	1,559	1,040	-	881	1,995	1,995	1,496	998	-	846	1,932	1,932	1,449	966	-	819
85	29.4	Q(Btu/h)	31,374	31,374	23,531	15,687	-	15,571	29,268	29,268	21,951	14,634	-	14,526	27,729	27,729	20,797	13,865	-	13,762
		W	2,016	2,016	1,512	1,008	-	854	1,932	1,932	1,449	966	-	819	1,869	1,869	1,402	935	-	792
80	26.7	Q(Btu/h)	31,860	31,860	23,895	15,930	-	15,812	29,754	29,754	22,316	14,877	-	14,767	28,215	28,215	21,161	14,108	-	14,003
		W	1,949	1,949	1,462	974	-	826	1,865	1,865	1,399	932	-	790	1,802	1,802	1,351	901	-	764
75	23.9	Q(Btu/h)	32,211	32,211	24,158	16,106	-	15,986	30,105	30,105	22,579	15,053	-	14,941	28,566	28,566	21,425	14,283	-	14,177
		W	1,890	1,890	1,418	945	-	801	1,806	1,806	1,355	903	-	765	1,743	1,743	1,307	872	-	739
70	21.1	Q(Btu/h)	32,400	32,400	24,300	16,200	-	16,080	30,294	30,294	22,721	15,147	-	15,035	28,755	28,755	21,566	14,378	-	14,271
		W	1,844	1,844	1,383	922	-	781	1,760	1,760	1,320	880	-	746	1,697	1,697	1,273	848	-	719
67	19.4	Q(Btu/h)	32,616	32,616	24,462	16,308	-	16,187	30,510	30,510	22,883	15,255	-	15,142	28,971	28,971	21,728	14,486	-	14,378
		W	1,810	1,810	1,358	905	-	767	1,726	1,726	1,295	863	-	732	1,663	1,663	1,247	832	-	705

* It may not reach the above capacities in low ambient temperatures.

SVZ-KP30NA
SUZ-KA30NAHZ1

Rated
Q(Btu/h): 32,000
W: 2,400

2) HEATING

Indoor D.B. Outdoor W.B. (°F) (°C)			77°F / 25.0°C						68°F / 20.0°C						59°F / 15.0°C					
			Max	Rated	75%	50%	25%	Min	Max	Rated	75%	50%	25%	Min	Max	Rated	75%	50%	25%	Min
65	18.3	Q(Btu/h)	43,394	40,842	30,631	20,421	-	16,592	44,652	42,026	31,519	21,013	-	17,073	46,080	43,370	32,527	21,685	-	17,619
		W	3,773	3,144	2,358	1,572	-	1,061	3,514	2,952	2,214	1,476	-	996	3,312	2,760	2,070	1,380	-	932
60	15.6	Q(Btu/h)	40,970	38,560	28,920	19,280	-	15,665	42,228	39,744	29,808	19,872	-	16,146	43,656	41,088	30,816	20,544	-	16,692
		W	3,629	3,024	2,268	1,512	-	1,021	3,370	2,832	2,124	1,416	-	956	3,168	2,640	1,980	1,320	-	891
55	12.8	Q(Btu/h)	38,250	36,000	27,000	18,000	-	14,625	39,508	37,184	27,888	18,592	-	15,106	40,936	38,528	28,896	19,264	-	15,652
		W	3,485	2,928	2,196	1,464	-	988	3,226	2,736	2,052	1,368	-	923	3,024	2,544	1,908	1,272	-	859
50	10.0	Q(Btu/h)	35,972	33,856	25,392	16,928	-	13,754	37,230	35,040	26,280	17,520	-	14,235	38,658	36,384	27,288	18,192	-	14,781
		W	3,341	2,796	2,097	1,398	-	944	3,082	2,604	1,953	1,302	-	879	2,880	2,412	1,809	1,206	-	814
45	7.2	Q(Btu/h)	31,520	31,360	23,520	15,680	-	12,740	32,800	32,544	24,408	16,272	-	13,221	34,080	33,888	25,416	16,944	-	13,767
		W	3,197	2,640	1,980	1,320	-	891	2,938	2,448	1,836	1,224	-	826	2,736	2,256	1,692	1,128	-	761
40	4.4	Q(Btu/h)	30,720	26,240	19,680	13,120	-	10,660	32,000	27,424	20,568	13,712	-	11,141	33,280	28,768	21,576	14,384	-	11,687
		W	3,110	2,424	1,818	1,212	-	818	2,851	2,280	1,710	1,140	-	770	2,650	2,112	1,584	1,056	-	713
35	1.7	Q(Btu/h)	30,720	22,720	17,040	11,360	-	9,230	32,000	25,280	18,960	12,640	-	10,270	33,280	26,880	20,160	13,440	-	10,920
		W	2,925	2,285	1,714	1,142	-	771	2,790	2,141	1,606	1,070	-	723	2,610	1,973	1,480	986	-	666
30	-1.1	Q(Btu/h)	30,720	21,760	16,320	10,880	-	8,840	32,000	22,912	17,184	11,456	-	9,308	33,280	23,872	17,904	11,936	-	9,698
		W	3,443	2,083	1,562	1,042	-	703	3,308	1,939	1,454	970	-	654	3,128	1,771	1,328	886	-	598
25	-3.9	Q(Btu/h)	30,720	20,800	15,600	10,400	-	8,450	32,000	21,952	16,464	10,976	-	8,918	33,280	22,912	17,184	11,456	-	9,308
		W	3,735	1,812	1,359	906	-	612	3,600	1,668	1,251	834	-	563	3,420	1,500	1,125	750	-	506
20	-6.7	Q(Btu/h)	30,720	19,840	14,880	9,920	-	8,060	32,000	20,992	15,744	10,496	-	8,528	33,280	21,952	16,464	10,976	-	8,918
		W	3,938	1,776	1,332	888	-	599	3,803	1,632	1,224	816	-	551	3,623	1,464	1,098	732	-	494
15	-9.4	Q(Btu/h)	30,720	19,360	14,520	9,680	-	7,865	32,000	20,512	15,384	10,256	-	8,333	33,280	21,472	16,104	10,736	-	8,723
		W	4,118	1,692	1,269	846	-	571	3,983	1,548	1,161	774	-	522	3,803	1,380	1,035	690	-	466
10	-12.2	Q(Btu/h)	30,720	18,624	13,968	9,312	-	7,566	32,000	19,776	14,832	9,888	-	8,034	33,280	20,736	15,552	10,368	-	8,424
		W	4,230	1,565	1,174	782	-	528	4,095	1,421	1,066	710	-	480	3,915	1,253	940	626	-	423
5	-15.0	Q(Btu/h)	30,720	18,224	13,668	9,112	-	7,404	32,000	19,376	14,532	9,688	-	7,872	33,280	20,336	15,252	10,168	-	8,262
		W	4,320	1,559	1,169	780	-	526	4,185	1,415	1,061	708	-	478	4,005	1,247	935	624	-	421
0	-17.8	Q(Btu/h)	28,960	17,920	13,440	8,960	-	7,280	30,240	19,072	14,304	9,536	-	7,748	31,520	20,032	15,024	10,016	-	8,138
		W	4,365	1,563	1,172	781	-	527	4,230	1,419	1,064	709	-	479	4,050	1,251	938	625	-	422
-4	-20.0	Q(Btu/h)	27,488	17,728	13,296	8,864	-	7,202	28,768	18,880	14,160	9,440	-	7,670	30,048	19,840	14,880	9,920	-	8,060
		W	4,388	1,547	1,160	774	-	522	4,253	1,403	1,052	702	-	474	4,073	1,235	926	618	-	417
-13	-25.0	Q(Btu/h)	24,320	17,561	13,171	8,780	-	7,134	25,600	18,713	14,035	9,356	-	7,602	26,880	19,673	14,755	9,836	-	7,992
		W	4,410	1,523	1,142	761	-	514	4,275	1,379	1,034	689	-	465	4,095	1,211	908	605	-	409

* Above data is for heating operation without any frost.

SVZ-KP36NA

SUZ-KA36NAHZ1

1) COOLING

Rated

Q(Btu/h): 36,000

W: 3,760

Indoor W.B. Outdoor D.B. (°F) (°C)			71°F / 21.7°C						67°F / 19.4°C						63°F / 17.2°C					
			Max	Rated	75%	50%	25%	Min	Max	Rated	75%	50%	25%	Min	Max	Rated	75%	50%	25%	Min
115	46.1	Q(Btu/h)	36,288	36,288	27,216	18,144	-	14,314	33,480	33,480	25,110	16,740	-	13,206	31,428	31,428	23,571	15,714	-	12,397
		W	4,587	4,587	3,440	2,294	-	1,159	4,437	4,437	3,328	2,218	-	1,121	4,324	4,324	3,243	2,162	-	1,093
110	43.3	Q(Btu/h)	38,124	38,124	28,593	19,062	-	15,038	35,316	35,316	26,487	17,658	-	13,930	33,264	33,264	24,948	16,632	-	13,121
		W	4,354	4,354	3,266	2,177	-	1,100	4,204	4,204	3,153	2,102	-	1,062	4,091	4,091	3,068	2,045	-	1,034
105	40.6	Q(Btu/h)	38,916	38,916	29,187	19,458	-	15,350	36,108	36,108	27,081	18,054	-	14,243	34,056	34,056	25,542	17,028	-	13,433
		W	4,207	4,207	3,156	2,104	-	1,063	4,057	4,057	3,043	2,029	-	1,025	3,944	3,944	2,958	1,972	-	997
100	37.8	Q(Btu/h)	39,960	39,960	29,970	19,980	-	15,762	37,152	37,152	27,864	18,576	-	14,654	35,100	35,100	26,325	17,550	-	13,845
		W	4,004	4,004	3,003	2,002	-	1,012	3,854	3,854	2,891	1,927	-	974	3,741	3,741	2,806	1,871	-	945
95	35.0	Q(Btu/h)	40,824	40,824	30,618	20,412	-	16,103	38,016	38,016	28,512	19,008	-	14,995	35,964	35,964	26,973	17,982	-	14,186
		W	3,843	3,843	2,882	1,921	-	971	3,692	3,692	2,769	1,846	-	933	3,580	3,580	2,685	1,790	-	904
90	32.2	Q(Btu/h)	41,400	41,400	31,050	20,700	-	16,330	38,592	38,592	28,944	19,296	-	15,222	36,540	36,540	27,405	18,270	-	14,413
		W	3,722	3,722	2,792	1,861	-	941	3,572	3,572	2,679	1,786	-	903	3,459	3,459	2,594	1,730	-	874
85	29.4	Q(Btu/h)	41,832	41,832	31,374	20,916	-	16,500	39,024	39,024	29,268	19,512	-	15,393	36,972	36,972	27,729	18,486	-	14,583
		W	3,610	3,610	2,707	1,805	-	912	3,459	3,459	2,594	1,730	-	874	3,346	3,346	2,510	1,673	-	846
80	26.7	Q(Btu/h)	42,480	42,480	31,860	21,240	-	16,756	39,672	39,672	29,754	19,836	-	15,648	37,620	37,620	28,215	18,810	-	14,839
		W	3,489	3,489	2,617	1,745	-	882	3,339	3,339	2,504	1,669	-	844	3,226	3,226	2,420	1,613	-	815
75	23.9	Q(Btu/h)	42,948	42,948	32,211	21,474	-	16,941	40,140	40,140	30,105	20,070	-	15,833	38,088	38,088	28,566	19,044	-	15,024
		W	3,384	3,384	2,538	1,692	-	855	3,234	3,234	2,425	1,617	-	817	3,121	3,121	2,341	1,560	-	789
70	21.1	Q(Btu/h)	43,200	43,200	32,400	21,600	-	17,040	40,392	40,392	30,294	20,196	-	15,932	38,340	38,340	28,755	19,170	-	15,123
		W	3,301	3,301	2,476	1,651	-	834	3,151	3,151	2,363	1,575	-	796	3,038	3,038	2,279	1,519	-	768
67	19.4	Q(Btu/h)	43,488	43,488	32,616	21,744	-	17,154	40,680	40,680	30,510	20,340	-	16,046	38,628	38,628	28,971	19,314	-	15,237
		W	3,241	3,241	2,431	1,621	-	819	3,091	3,091	2,318	1,545	-	781	2,978	2,978	2,233	1,489	-	752

* It may not reach the above capacities in low ambient temperatures.

SVZ-KP36NA
SUZ-KA36NAHZ1

Rated
Q(Btu/h): 37,000
W: 3,280

2) HEATING

Indoor D.B.			77°F / 25.0°C							68°F / 20.0°C							59°F / 15.0°C						
Outdoor W.B.			Max	Rated	75%	50%	25%	Min		Max	Rated	75%	50%	25%	Min		Max	Rated	75%	50%	25%	Min	
(°F)	(°C)																						
65	18.3	Q(Btu/h)	51,052	47,223	35,417	23,612	-	17,613		52,532	48,592	36,444	24,296	-	18,124		54,212	50,146	37,610	25,073	-	18,703	
		W	5,450	4,297	3,223	2,148	-	1,074		5,075	4,034	3,026	2,017	-	1,009		4,784	3,772	2,829	1,886	-	943	
60	15.6	Q(Btu/h)	48,200	44,585	33,439	22,293	-	16,629		49,680	45,954	34,466	22,977	-	17,140		51,360	47,508	35,631	23,754	-	17,719	
		W	5,242	4,133	3,100	2,066	-	1,033		4,867	3,870	2,903	1,935	-	968		4,576	3,608	2,706	1,804	-	902	
55	12.8	Q(Btu/h)	45,000	41,625	31,219	20,813	-	15,525		46,480	42,994	32,246	21,497	-	16,036		48,160	44,548	33,411	22,274	-	16,615	
		W	5,034	4,002	3,001	2,001	-	1,000		4,659	3,739	2,804	1,870	-	935		4,368	3,477	2,608	1,738	-	869	
50	10.0	Q(Btu/h)	42,320	39,146	29,360	19,573	-	14,600		43,800	40,515	30,386	20,258	-	15,111		45,480	42,069	31,552	21,035	-	15,691	
		W	4,826	3,821	2,866	1,911	-	955		4,451	3,559	2,669	1,779	-	890		4,160	3,296	2,472	1,648	-	824	
45	7.2	Q(Btu/h)	36,445	36,260	27,195	18,130	-	13,524		37,925	37,629	28,222	18,815	-	14,035		39,405	39,183	29,387	19,592	-	14,614	
		W	4,618	3,608	2,706	1,804	-	902		4,243	3,346	2,509	1,673	-	836		3,952	3,083	2,312	1,542	-	771	
40	4.4	Q(Btu/h)	35,520	30,340	22,755	15,170	-	11,316		37,000	31,709	23,782	15,855	-	11,827		38,480	33,263	24,947	16,632	-	12,406	
		W	4,493	3,313	2,485	1,656	-	828		4,118	3,116	2,337	1,558	-	779		3,827	2,886	2,165	1,443	-	722	
35	1.7	Q(Btu/h)	35,520	26,270	19,703	13,135	-	9,798		37,000	29,230	21,923	14,615	-	10,902		38,480	31,080	23,310	15,540	-	11,592	
		W	4,507	3,123	2,342	1,561	-	781		4,299	2,926	2,194	1,463	-	731		4,021	2,696	2,022	1,348	-	674	
30	-1.1	Q(Btu/h)	35,520	25,160	18,870	12,580	-	9,384		37,000	26,492	19,869	13,246	-	9,881		38,480	27,602	20,702	13,801	-	10,295	
		W	5,304	2,847	2,135	1,424	-	712		5,096	2,650	1,988	1,325	-	663		4,819	2,421	1,815	1,210	-	605	
25	-3.9	Q(Btu/h)	35,520	24,050	18,038	12,025	-	8,970		37,000	25,382	19,037	12,691	-	9,467		38,480	26,492	19,869	13,246	-	9,881	
		W	5,755	2,476	1,857	1,238	-	619		5,547	2,280	1,710	1,140	-	570		5,269	2,050	1,538	1,025	-	513	
20	-6.7	Q(Btu/h)	35,520	22,940	17,205	11,470	-	8,556		37,000	24,272	18,204	12,136	-	9,053		38,480	25,382	19,037	12,691	-	9,467	
		W	6,067	2,427	1,820	1,214	-	607		5,859	2,230	1,673	1,115	-	558		5,581	2,001	1,501	1,000	-	500	
15	-9.4	Q(Btu/h)	35,520	22,385	16,789	11,193	-	8,349		37,000	23,717	17,788	11,859	-	8,846		38,480	24,827	18,620	12,414	-	9,260	
		W	6,344	2,312	1,734	1,156	-	578		6,136	2,116	1,587	1,058	-	529		5,859	1,886	1,415	943	-	472	
10	-12.2	Q(Btu/h)	35,520	21,534	16,151	10,767	-	8,032		37,000	22,866	17,150	11,433	-	8,528		38,480	23,976	17,982	11,988	-	8,942	
		W	6,517	2,139	1,604	1,069	-	535		6,309	1,942	1,456	971	-	485		6,032	1,712	1,284	856	-	428	
5	-15.0	Q(Btu/h)	35,520	21,072	15,804	10,536	-	7,859		37,000	22,404	16,803	11,202	-	8,356		38,480	23,514	17,635	11,757	-	8,770	
		W	6,656	2,131	1,598	1,066	-	533		6,448	1,934	1,451	967	-	484		6,171	1,705	1,278	852	-	426	
0	-17.8	Q(Btu/h)	33,485	20,720	15,540	10,360	-	7,728		34,965	22,052	16,539	11,026	-	8,225		36,445	23,162	17,372	11,581	-	8,639	
		W	6,725	2,136	1,602	1,068	-	534		6,517	1,939	1,454	970	-	485		6,240	1,710	1,282	855	-	427	
-4	-20.0	Q(Btu/h)	31,783	20,498	15,374	10,249	-	7,645		33,263	21,830	16,373	10,915	-	8,142		34,743	22,940	17,205	11,470	-	8,556	
		W	6,760	2,115	1,586	1,057	-	529		6,552	1,918	1,438	959	-	479		6,275	1,688	1,266	844	-	422	
-13	-25.0	Q(Btu/h)	28,120	20,305	15,228	10,152	-	7,573		29,600	21,637	16,227	10,818	-	8,070		31,080	22,747	17,060	11,373	-	8,484	
		W	6,795	2,081	1,561	1,041	-	520		6,587	1,884	1,413	942	-	471		6,309	1,655	1,241	827	-	414	

* Above data is for heating operation without any frost.

mitsubishi electric corporation

HEAD OFFICE: TOKYO BUILDING, 2-7-3, MARUNOUCHI, CHIYODA-KU, TOKYO 100-8,310, JAPAN