

RECTORSEAL

A CSW Industrials Company

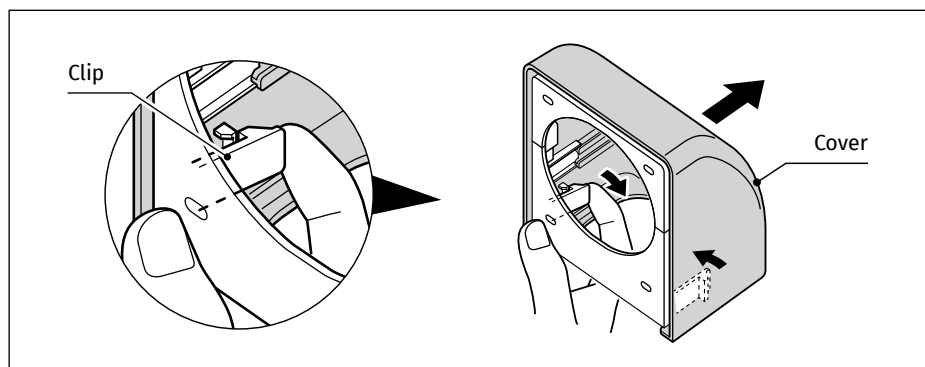
INSTALLATION INSTRUCTIONS

LineGate™
Wall Mounted Outlet



1. REMOVE THE BASE

Push the clip inward to remove the base.

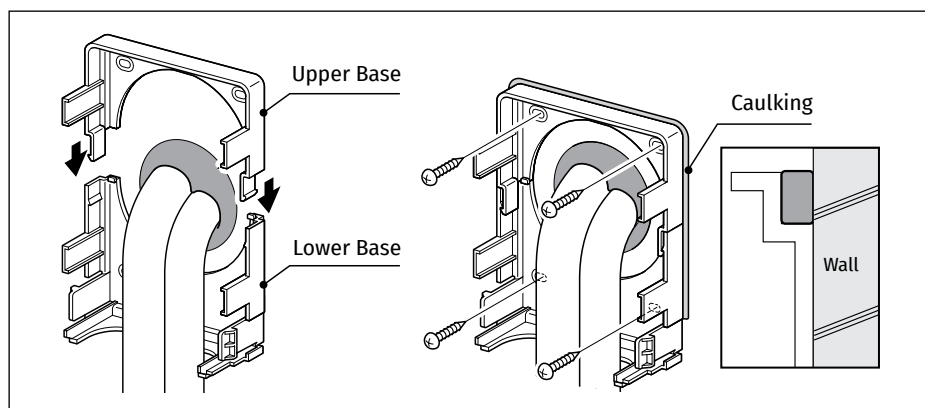


2. HOW TO FIX THE BASE AND CAULKING

Assemble the base together first and then fix it on the wall with screws.

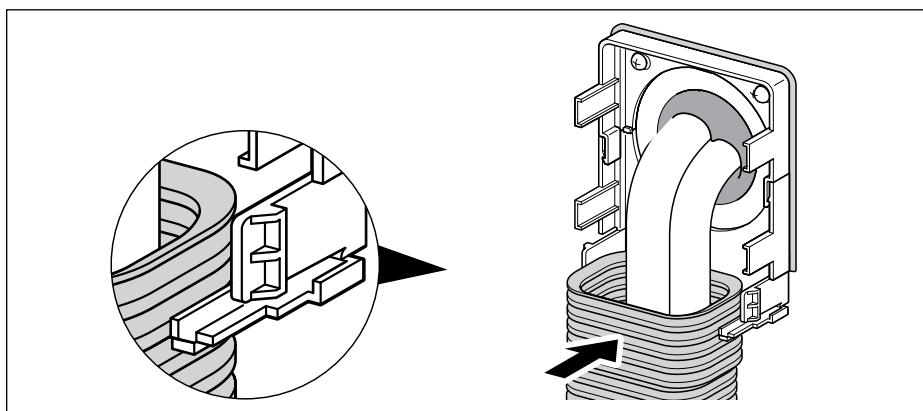
Then apply caulking or putty to seal.

Remarks: Caulking has to be applied sufficiently until it overbrims.



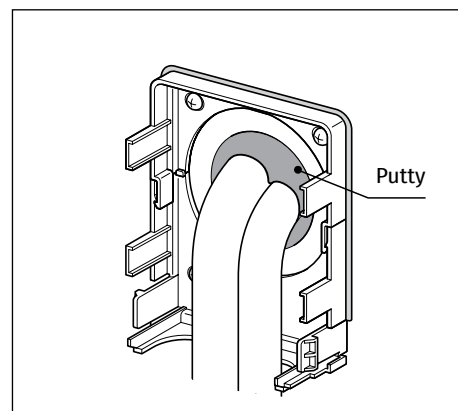
How to fix SF flexible joint

Penetrate lineset inside the flexible joint and insert the groove between the second and third ridge.



Penetration seal

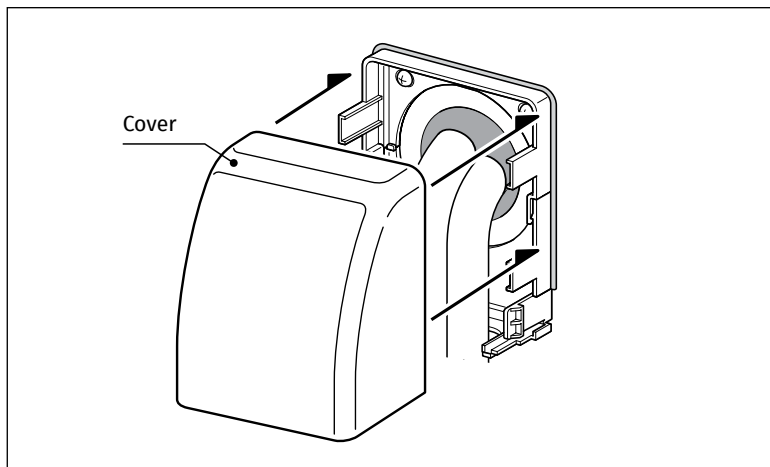
Seal the penetration hole with putty or any waterproof sealing material.



3. FIXING COVER

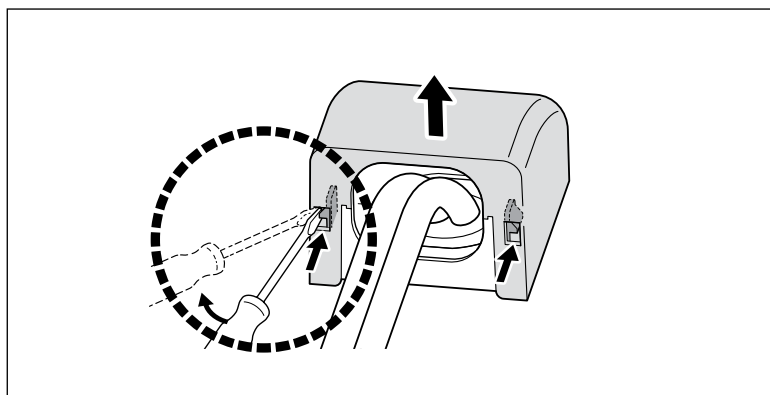
Fix the cover on before the caulking material hardens.

Remarks: Once the caulking material hardens, it could be difficult to fix the cover on.



HOW TO REMOVE THE COVER AFTER THE OUTLET IS FIXED ON THE WALL

Remove the cover by inserting flathead screwdriver from the bottom and push the clip outwards.



Limited Warranty



For more information on our product warranty, visit rectorseal.com.

Manufactured for

RectorSeal, LLC

2601 Spenwick Drive • Houston, TX 77055, USA • 800-231-3345 • Fax 800-441-0051 • rectorseal.com

3255 Wyandotte St. East • Windsor, ON N8Y 1E9, Canada • 519-966-4901

A CSW Industrials Company. RectorSeal, the logos and other trademarks are property of RectorSeal, LLC, its affiliates or its licensors and are protected by copyright, trademark and other intellectual property laws, and may not be used without permission. RectorSeal reserves the right to change specifications without prior notice. ©2023 RectorSeal. All rights reserved. R51084-1223