

BLANK-OFF PANELS

Sheet Formed Aluminum

RELIABLE

APPLICATION

Blank-off panels are highly customized to prevent air through the louver and resist the transference of heat evaporating certain designated locations. Insulated panels are completely enclosed to eliminate outside exposure for longevity.

STANDARD CONSTRUCTION

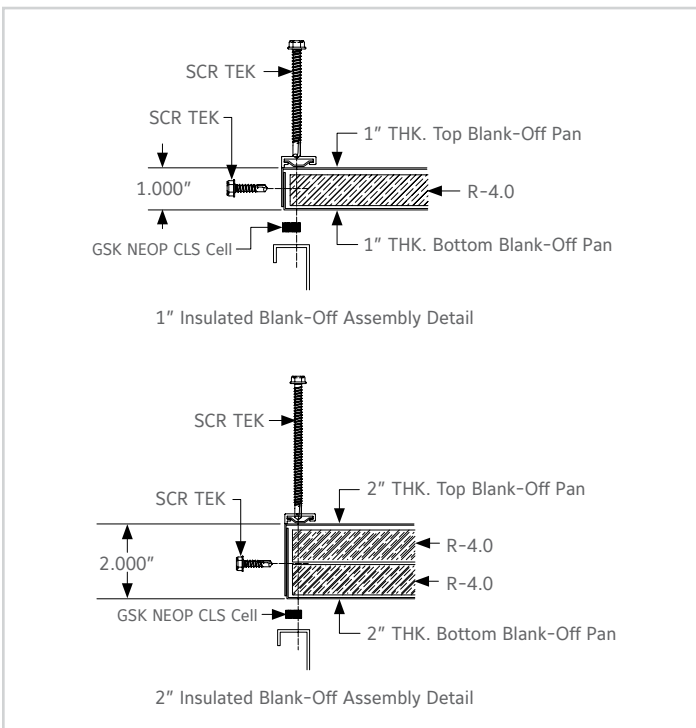
Frame	0.040: thk aluminum sheet. Offered with and without insulation.
Blades	Mill.
Maximum Factory Assembly Size	Sized to fit louver order panel size: (shown in table below).
Insulation Material (Optional)	EPS Expanded Polystyrene Foam (EPS)

Consult Reliable for additional information.

Make Table:	Max Size Blank-Off Dimension	
Blank Off Type	48" Wide Assembly	60" Wide Assembly
Non Insulated	48"	60"
1" Insulated	46"	58"
2" Insulated	44"	56"



ASSEMBLY DETAIL



VARIATIONS

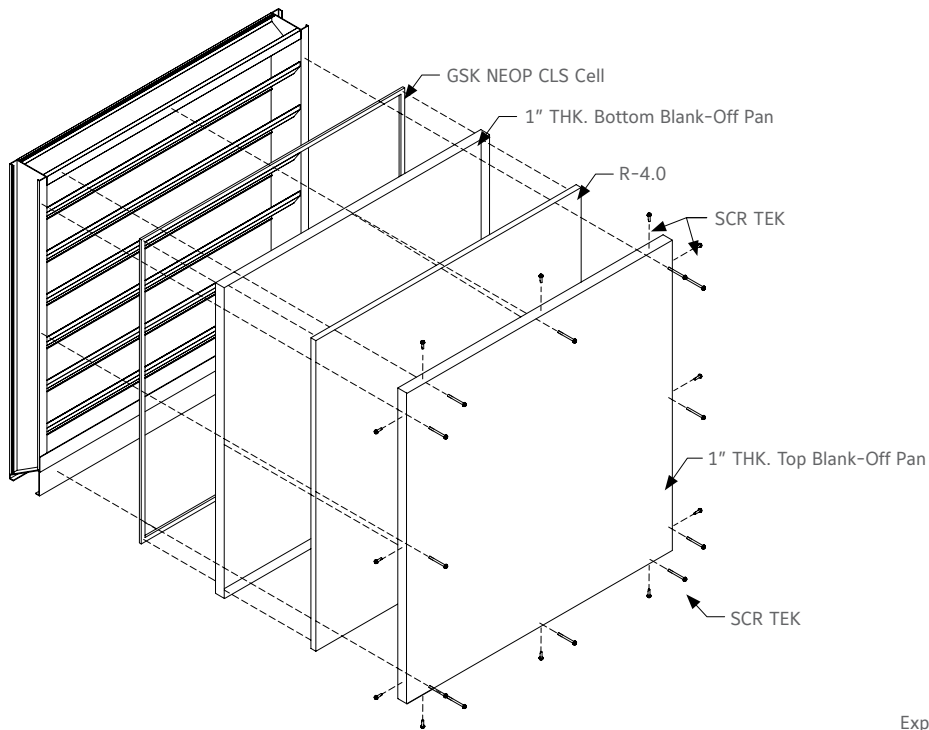
Variations to the basic design of this louver are available at additional cost.

- Non Insulated blank off panels with 0.040"thk aluminum sheathing
- 1" insulated blank off panel with 0.04"thk aluminum sheathing 4.0 R-Value
- 2" insulated blank off panel with 0.040"thk aluminum sheathing 8.0 R-Value
- Selection of finishes: baked enamel (modified fluoropolymer), epoxy, integral color and clear anodize, PVDF, flurodize, powder coat and prime coat

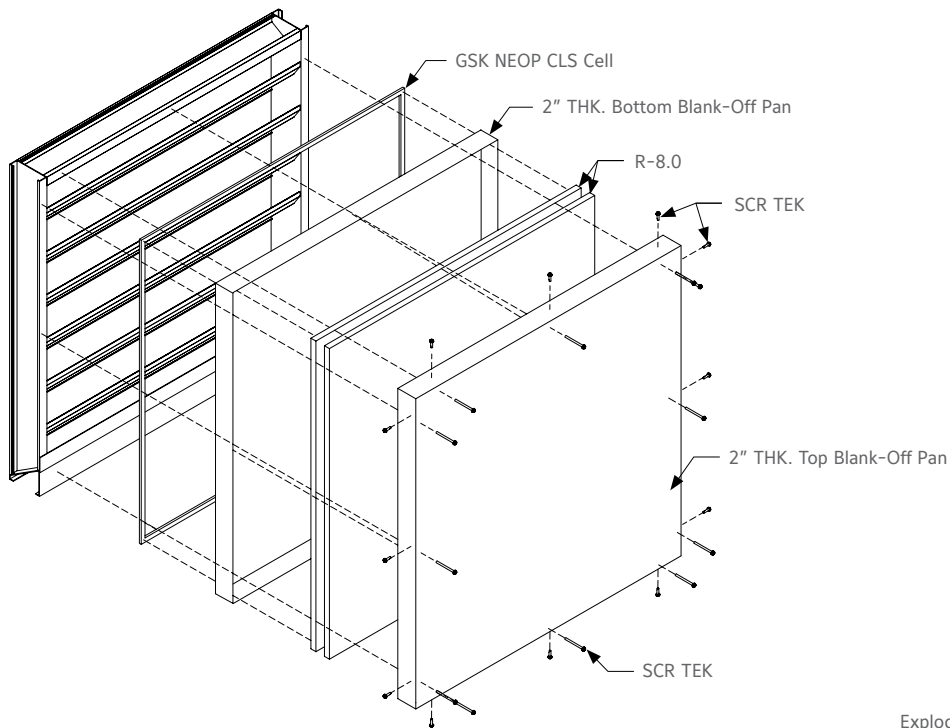
Consult Reliable for other special requirements.

NOTES:

- On assemblies that are more than one section tall, the HVBS members and blank-offs shall extend to the top and/or bottom of sections at locations where other sections join (for splicing)
- Blank-offs to be finished to match louver unless otherwise specified
- 0.125" x 2" alum. strap is required for each ship section that is 60" or greater in width with no HVBS



Exploded View of 1" Insulated Blank-Off Panel



Exploded View of 2" Insulated Blank-Off Panel

LINKS TO IMPORTANT DOCUMENTS

Document Title

Finishes and Color Guide

Limited Warranty Document

RELIABLE

1300 Enterprise Road, P.O. Box
580, Geneva, Alabama 36340
Tel: 334-684-3621
Tel: 800-624-3914
Fax: 800-508-1469