



## ASSEMBLY INSTRUCTIONS

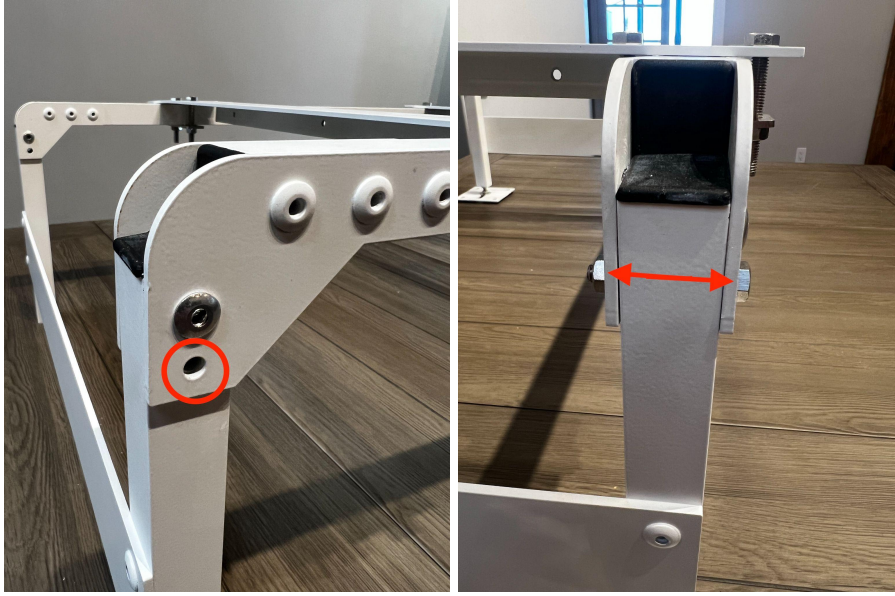
1. Remove Everstand from box and fold out legs



2. Spin in feet to bottoms of all 4 legs



3. Using four provided  $\frac{1}{4}$ " diameter by 1.5" long bolts and nuts, secure legs in all four corners



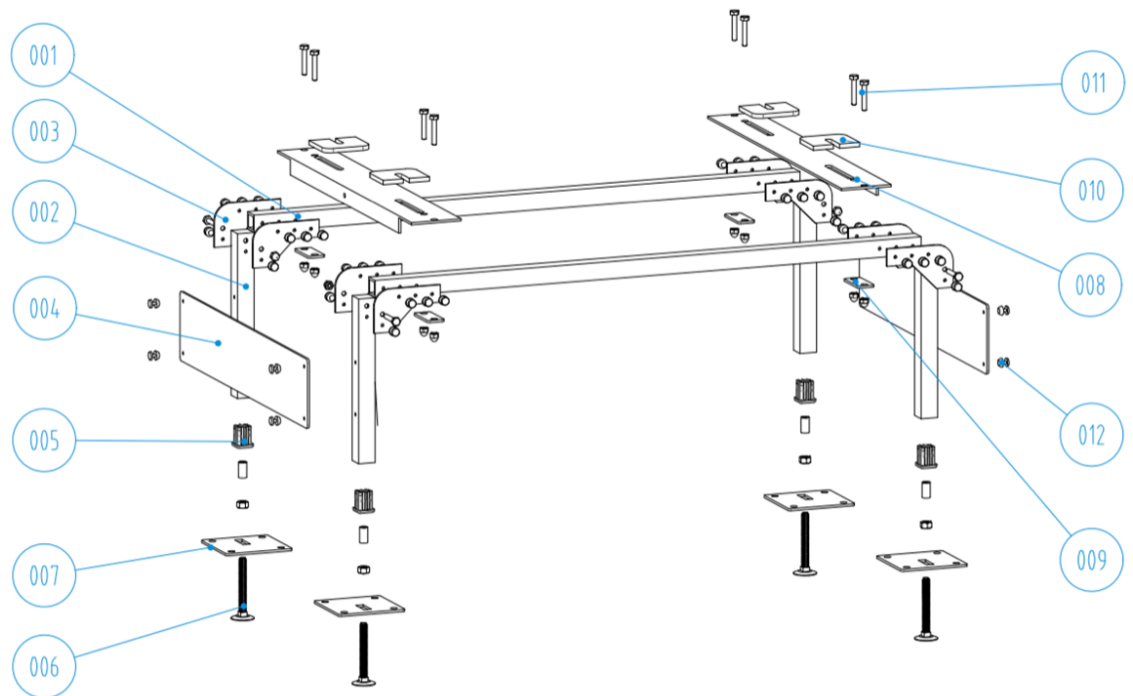
4. Adjust support channels to align with feet arrangement of heat pump and mount feet into channels using the provided 5/16" x 2.5" bolts, washers, nuts and vibration isolation pads



5. NOTE: if using a top discharge heat pump with a square footprint, you can flip the support channels so the "L" faces up. Align the channels so they cradle the heat pump and use the pre drilled holes if needed to secure the heat pump

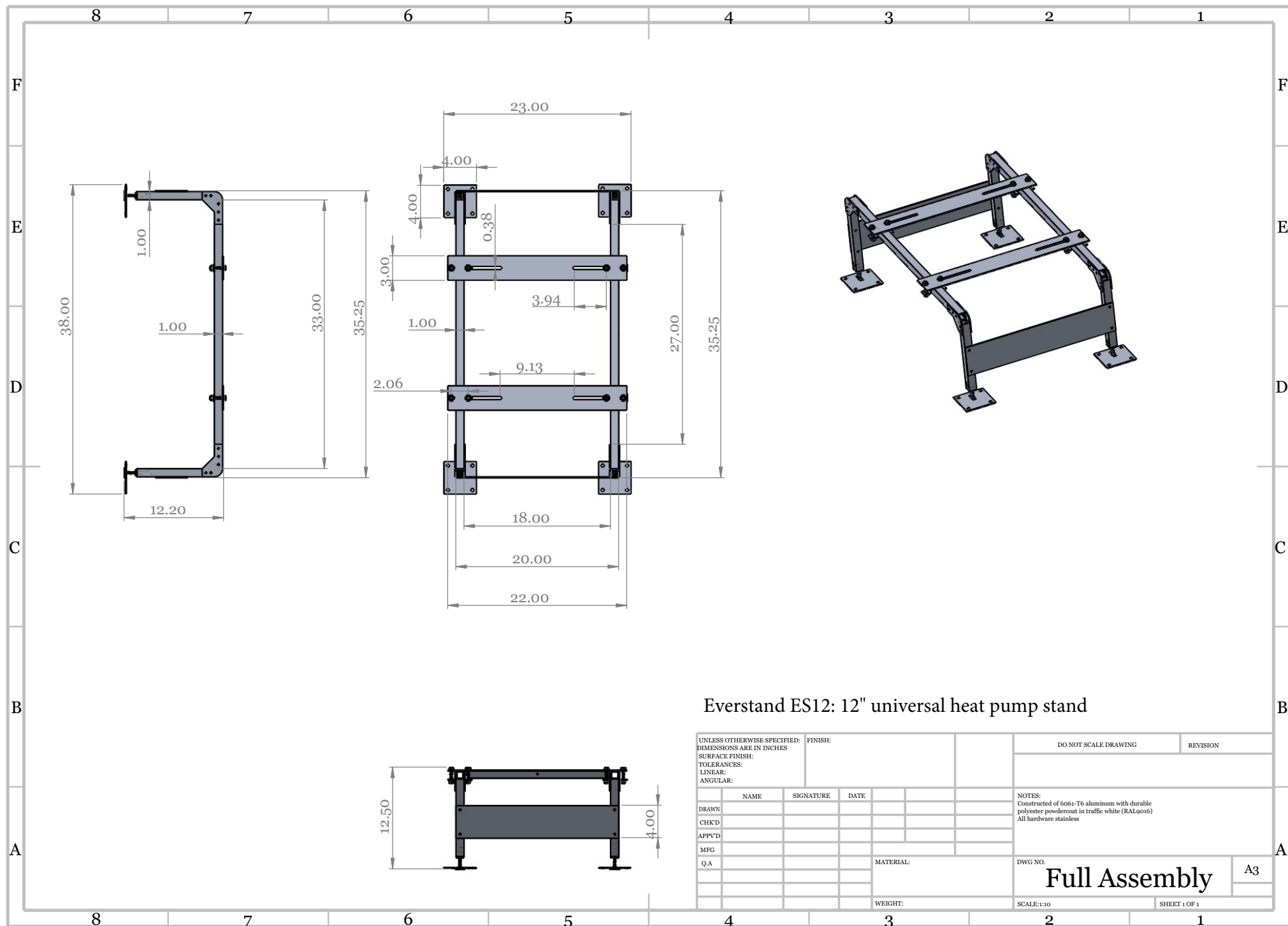


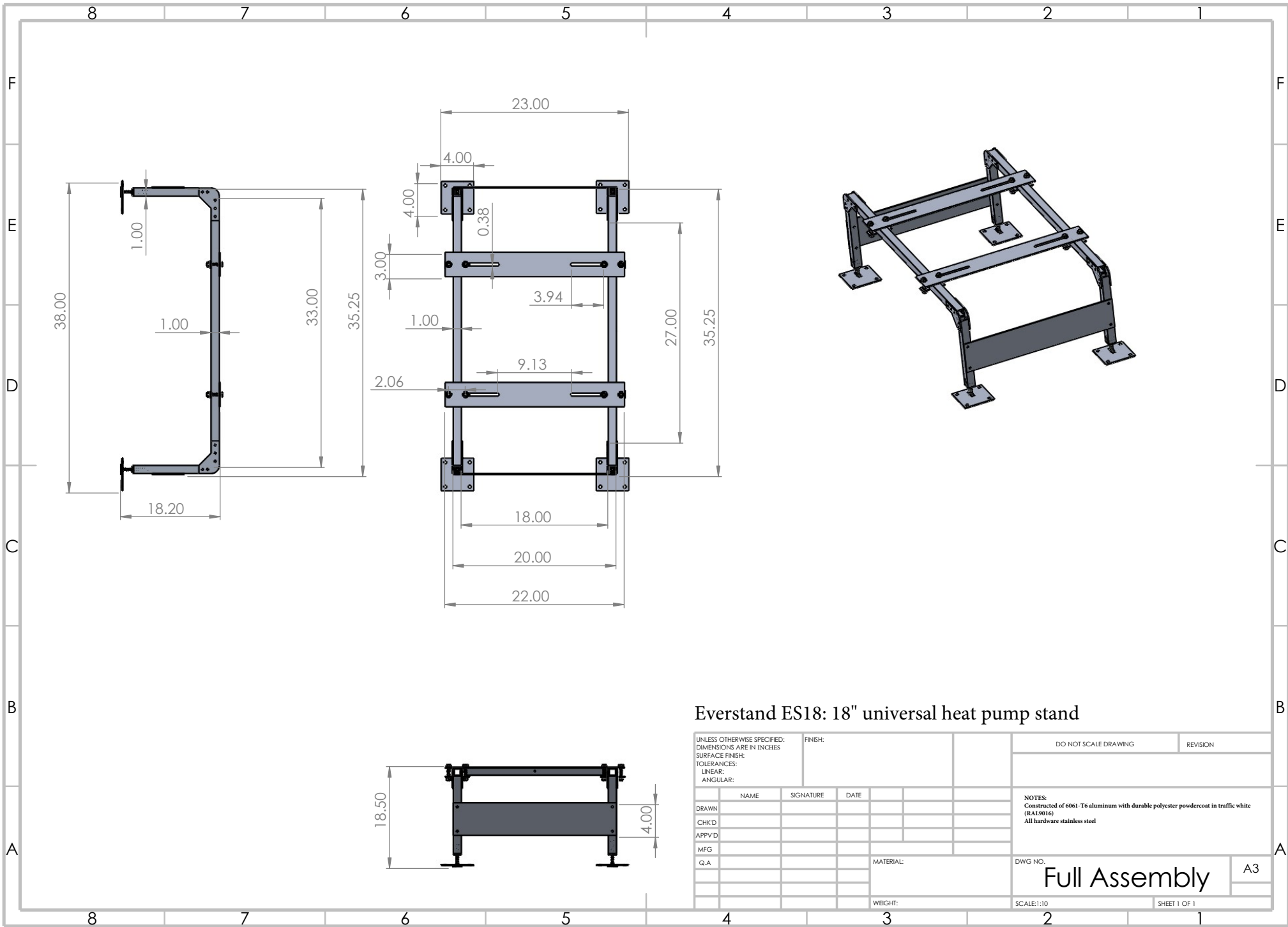
## EXPLODED VIEW



[WWW.EVERSTANDS.COM](http://WWW.EVERSTANDS.COM)

PATENT PENDING





Everstand ES18: 18" universal heat pump stand

UNLESS OTHERWISE SPECIFIED: DIMENSIONS ARE IN INCHES SURFACE FINISH: TOLERANCES: LINEAR: ANGULAR:					FINISH:		DO NOT SCALE DRAWING		REVISION		
DRAWN		NAME	SIGNATURE		DATE			<b>NOTES:</b> Constructed of 6061-T6 aluminum with durable polyester powdercoat in traffic white (RAL9016) All hardware stainless steel			
CHK'D											
APPV'D											
MFG											
Q.A											
							MATERIAL:		DWG NO.		A3
									Full Assembly		
							WEIGHT:		SCALE:1:10		SHEET 1 OF 1