

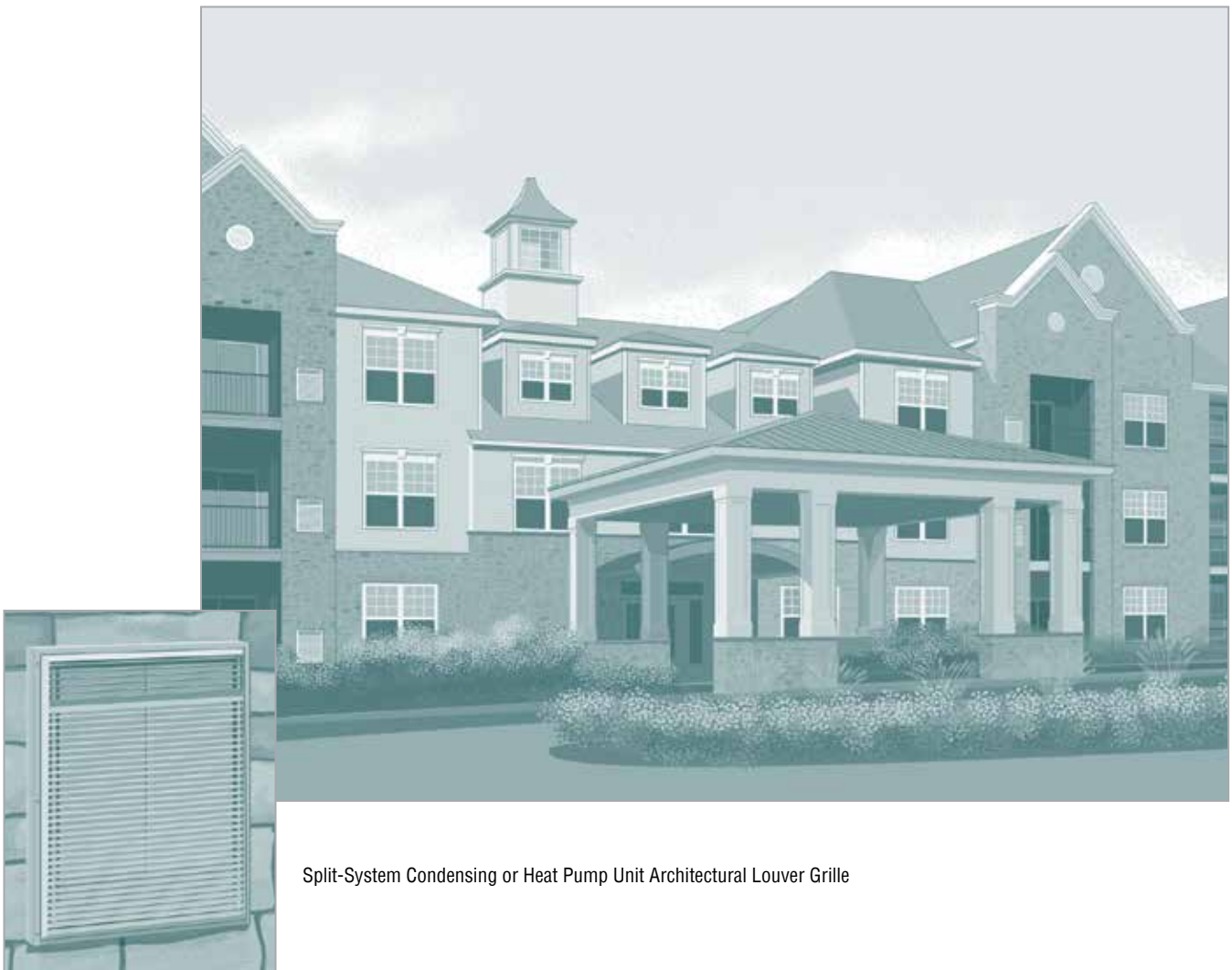


Thru-the-Wall Comfort for all types of Multi-Family Construction

Architectural Options to Compliment any Design

Enhance the appearance of your building with customizable louver grilles; designed to add functionality and appeal while adding protection to the condenser coil from weather and vandalism.

Architectural Louver Grilles are available in a wide variety of colors that can be color matched to the exterior of the design to ensure your vision remains intact.



Split-System Condensing or Heat Pump Unit Architectural Louver Grille

Go Thru-the-Wall



National Comfort Products
A Division of National Refrigeration and Air Conditioning Products, Inc.
539 Dunksterry Road • Bensalem, PA 19020-5908
(800) 523-7138 • Fax (215) 639-1674
www.nationalcomfortproducts.com

Split-System Condensing Unit and Heat Pump Architectural Louver Grille

Our Thru-the-Wall Condensing Units and Heat Pump come shipped with a wire grille in front of the condenser coil. Here you can see what the units look like standard.

Color – Off White



1000 Series



3000 Series



4000 Series



5000 Series

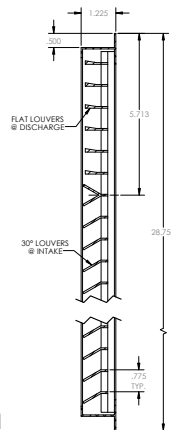
The Unit Mount Architectural Louver

The Unit Mount Architectural Louver is an extruded aluminum louver designed to fit the exterior dimension of the unit itself. It is offered with a painted baked enamel finish or an anodized clear finish.

Not recommended for new construction projects utilizing the wall sleeve.



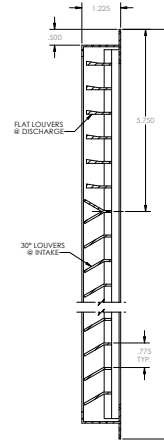
1000 Series
Grille Size: 26" W x 28 5/8" H



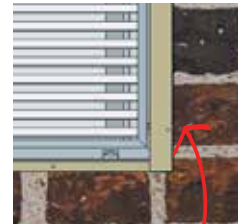
Model: 14269035 (Anodized Aluminum Finish)
Model: 14269035-P (Painted Finish)



3000 Series
Grille Size: 23 3/4" W x 32" H



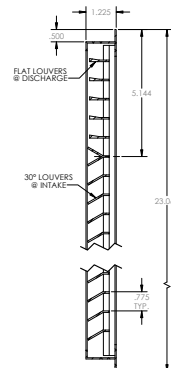
Model: 14269036 (Anodized Aluminum Finish)
Model: 14269036-P (Painted Finish)



Wall Sleeve border
is visible curbside



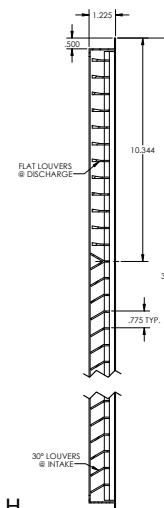
4000 Series
Grille Size: 29 1/2" W x 23" H



Model: 14269037 (Anodized Aluminum Finish)
Model: 14269037-P (Painted Finish)



5000 Series
Grille Size: 26 5/8" W x 38 7/8" H



Model: 14269038 (Anodized Aluminum Finish)
Model: 14269038-P (Painted Finish)

The Sleeve Mount Architectural Louver

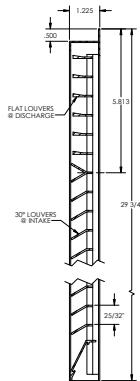
The Sleeve Mount Architectural Louver is an extruded aluminum louver designed to fit the exterior dimension of the wall sleeve. It is offered with a painted baked enamel finish or an anodized clear finish.

Recommended for new construction projects utilizing the wall sleeve.



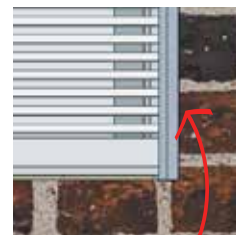
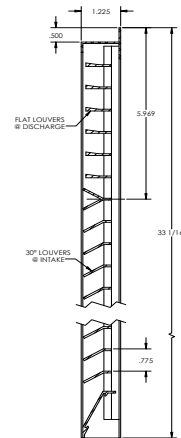
1000 Series
Rough in at 26 7/8" W x 30 1/8" H

Model: 14269035-S (Anodized Aluminum Finish)
Model: 14269035-SP (Painted Finish)



3000 Series
Rough in 25 3/8" W x 33 1/2" H

Model: 14269036-S (Anodized Aluminum Finish)
Model: 14269036-SP (Painted Finish)

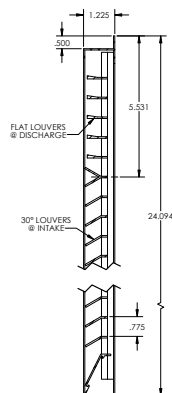


Wall Sleeve border
is NOT visible curbside



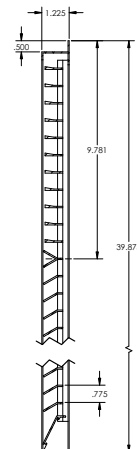
4000 Series
Rough in at 31 1/8" W x 24 1/2" H

Model: 14269037-S (Anodized Aluminum Finish)
Model: 14269037-SP (Painted Finish)



5000 Series
Rough in at 28 1/2" W x 40 3/8" H

Model: 14269038-S (Anodized Aluminum Finish)
Model: 14269038-SP (Painted Finish)



Available painted finishes for -P and -SP Models



LB
Lite Bronze



MB
Medium Bronze



DB
Dark Bronze



EW
Off White



GW
Gloss White



WS
White Stone



BR1
Brick Red 1



BR3
Brick Red 3



BR5
Brick 5



SLG
Slate Gray



MBL
Medium Blue



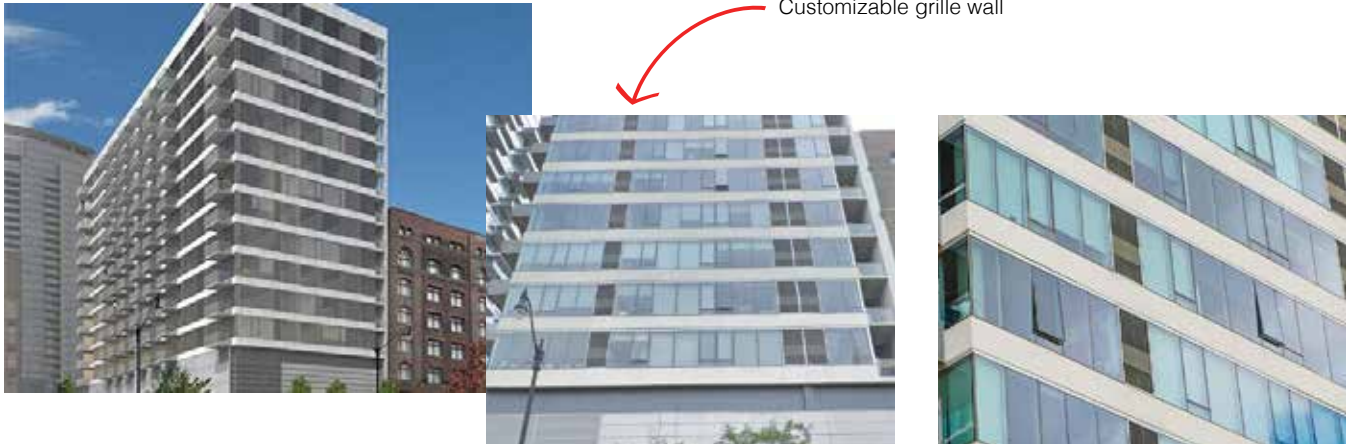
MGN
Medium Green

Additional colors available at www.reliablelouvers.com.
Custom color matching is available, consult factory.

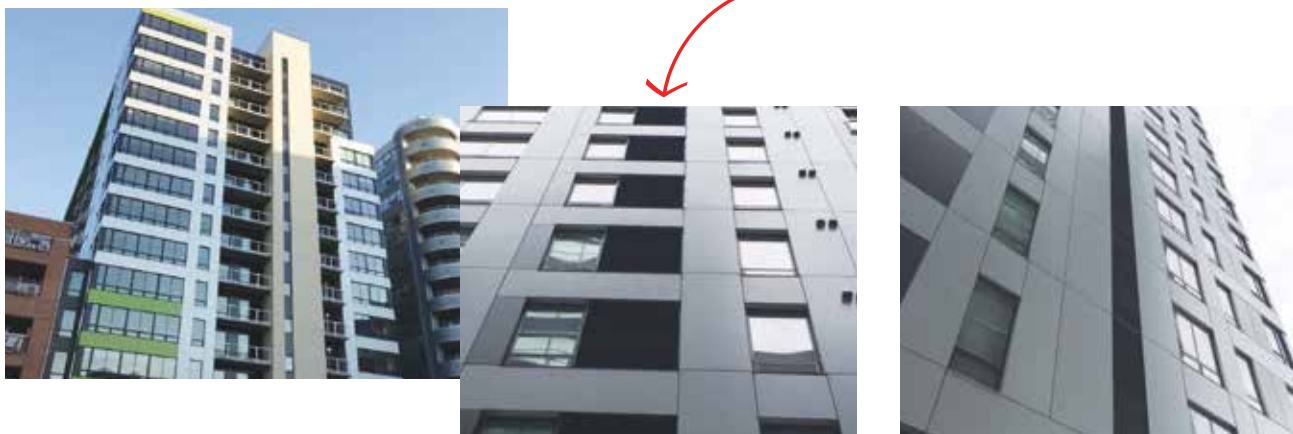
Customized Options are Welcomed!

While our neutral grille finish and architectural louver grilles complement any exterior wall, we will work with architects and design engineers to develop a custom louver that will intergrate with the overall design of the building. Contact us at 1-800-523-7138 for further assistance.

1345 Wabash (Chicago, IL)



151 East Wilson (Madison, WI)



National Comfort Products offers Architectural Louver Grilles for all models. Outdoor grilles provided by other manufacturers must be approved by National Comfort Products to maintain unit performance and warranty coverage.

All specifications are subject to change without notice.



National Comfort Products
A Division of National Refrigeration and Air Conditioning Products, Inc.
539 Dunksferry Road • Bensalem, PA 19020-5908
(800) 523-7138 • Fax (215) 639-1674
www.nationalcomfortproducts.com