

Job Name:

System Reference:

Date:

208/230V OUTDOOR VRF HEAT PUMP SYSTEM



UNIT OPTION

Standard Model.....PUHY-P72TNU-A

Seacoast (BS) Model.....PUHY-P72TNU-A-BS

ACCESSORIES

Big Foot Stand.....for details see Big Foot Stands submittals

Header Kit.....for details see Pipe Accessories Submittal

Joint Kit.....for details see Pipe Accessories Submittal

Low Ambient Kit.....for details see Low Ambient Kit Submittal

Panel Heater Kit.....for details see Panel Heater Kit Submittal

Snow/Hail Guards Kit.....for details see Snow/Hail Guards Kit Submittal

Specifications			System
Unit Type			PUHY-P72TNU-A(-BS)
Cooling Capacity (Nominal)		BTU/H	72,000
Heating Capacity (Nominal)		BTU/H	80,000
Guaranteed Operating Range	Cooling	°F [°C]	23~126 [-5.0~52.0]
	Heating	°F [°C]	-13~60 [-25.0~15.5]
Extended Operating Range	Heating	°F [°C]	-18.0~60 [-28.0~15.5]
External Dimensions (H x W x D)		In. [mm]	71-5/8 x 36-1/4 x 29-3/16 [1,818 x 920 x 740]
Net Weight		Lbs. [kg]	470 [213]
External Finish		Pre-coated galvanized steel sheet (+powder coating for -BS type) [MUNSELL 3Y 7.8/1.1 or similar]	
Electrical Power Requirements		Voltage, Phase, Hertz, Power Tolerance	208/230V, 3-phase, 60 Hz, ±10%
Minimum Circuit Ampacity		A	29.0/26.0
Maximum Overcurrent Protection		A	45/40
Recommended Fuse Size		A	30/30
Recommended Minimum Wire Size		AWG [mm]	10/10 [5.3/5.3]
SCCR		kA	5
Refrigerant Piping Diameter	Liquid (High Pressure)	In. [mm]	3/8 [9.52] Braze
	Gas (Low Pressure)	In. [mm]	7/8 [22.2] Braze
Max. Total Refrigerant Line Length		Ft.	3,280
Max. Refrigerant Line Length (Between ODU & IDU)		Ft.	541
Max. Control Wiring Length		Ft.	1,640
Indoor Unit Connectable	Total Capacity	50.0~130.0% of outdoor unit capacity	
	Model/Quantity	P04~P72/1.0~18.0	
Sound Pressure Levels		dB(A)	55.0/57.5
Sound Power Levels		dB(A)	74.0/76.5
FAN ⁴	Type x Quantity	Propeller fan x 1	
	Fan Motor Output	kW	0.92
	Airflow Rate	CFM	6,000
	External Static Pressure	In. WG	Selectable; 0.00, 0.12, 0.24, 0.32, In. WG; factory set to 0 In. WG
Compressor Operating Range		21.0% to 100.0%	
Compressor	Type x Quantity	Inverter scroll hermetic compressor x 1	
	Type x Original Charge	R410A x 14.0 lbs + 5.0 oz [6.5 kg]	
Refrigerant	High Pressure Protection	High pressure sensor, High pressure switch at 4.15 MPa (601 psi)	
	Inverter Circuit (Comp./Fan)	Over-current protection	
AHRI Ratings (Ducted/Non-ducted)	EER	10.9/12.0	
	IEER	21.6/26.9	
	COP	4.03/4.39	

NOTES:

Nominal cooling conditions (Test conditions are based on AHRI 1230-2023)
Indoor: 80°F D.B./67°F W.B. (26.7°C D.B./19.4°C W.B.), Outdoor: 95°F D.B. (35°C D.B.)
Nominal heating conditions (Test conditions are based on AHRI 1230-2023)
Indoor: 70°F D.B. (21.1°C D.B.), Outdoor: 47°F D.B./43°F W.B. (8.3°C D.B./6.1°C W.B.)

¹Harsh weather environments may demand performance enhancing equipment. Ask your Mitsubishi Electric representative for more details about your region

²For details on extended cooling operation range down to -10° F DB, see Low Ambient Kit Submittal

³When applying product below -4°F, consult your design engineer for cold climate application best practices, including the use of a backup source for heating

⁴Unit will continue to operate in extended operating range, but capacity is not guaranteed

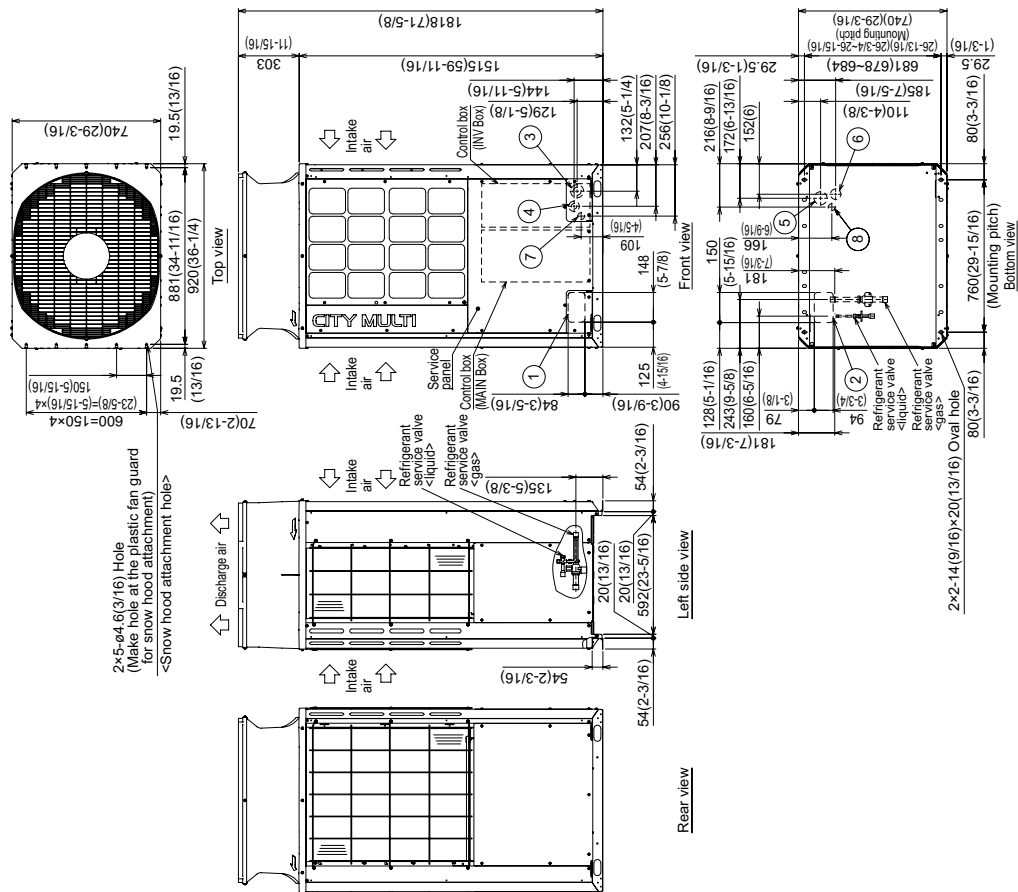
OUTDOOR UNIT: PUHY-P72TNU-A(-BS) – DIMENSIONS

PUHY-P72TNU-A(-BS)

Unit: mm (in.)

Note 1. At brazing of pipes, wrap the refrigerant service valve with wet cloth and keep the temperature of refrigerant service valve under 120°C(248°F).

Model		Diameter			
		Refrigerant pipe		Service valve	
		Liquid	Gas	Liquid	Gas
P72	ø6.32(ø8)Brazed	ø22.7(18)	ø22.7(18)	ø6.32(ø8)	ø22.7(18)



NOTES:
SEACOAST PROTECTION
Anti-corrosion Protection: A coating treatment is applied to condenser coil for protection from air contaminants.
Standard: Salt Spray Test Method - no unusual rust development to 480 hours.
Sea Coast (BS): Salt Spray Test Method (JRA 9002) - no unusual rust development to 960 hours.

1340 Satellite Boulevard Suwanee, GA 30024
Toll Free: 800-433-4822 www.mehvac.com

FORM# PUHY-P72TNU-A - 202404

