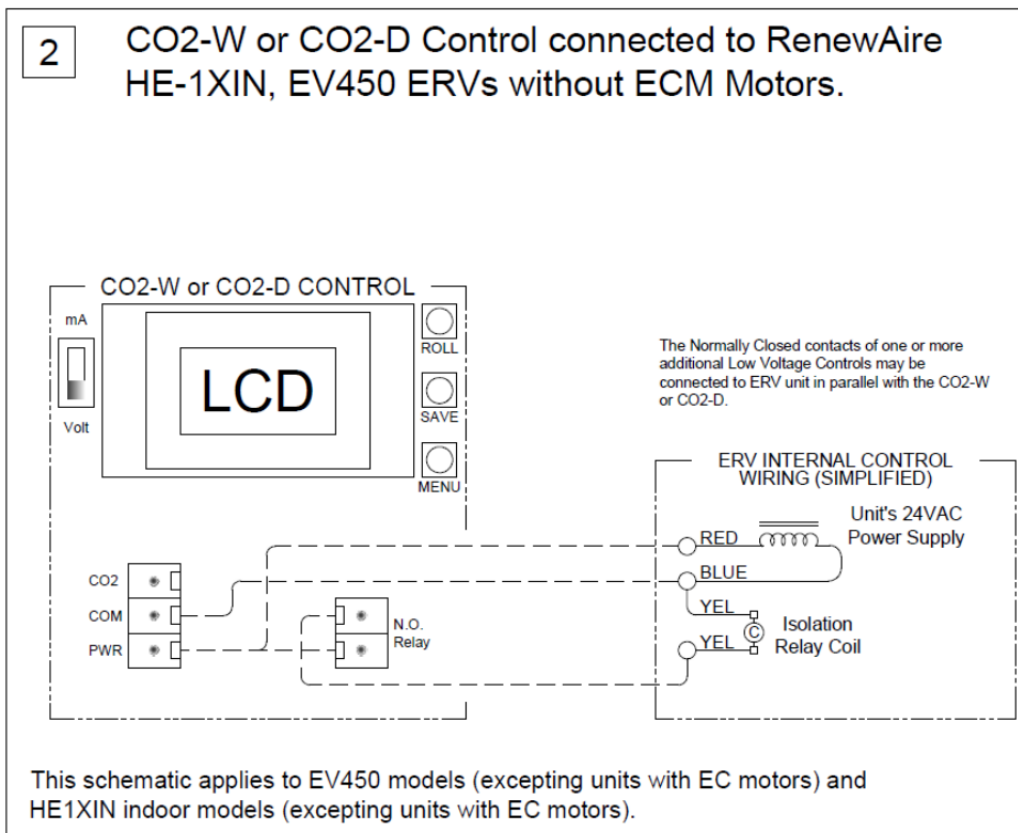
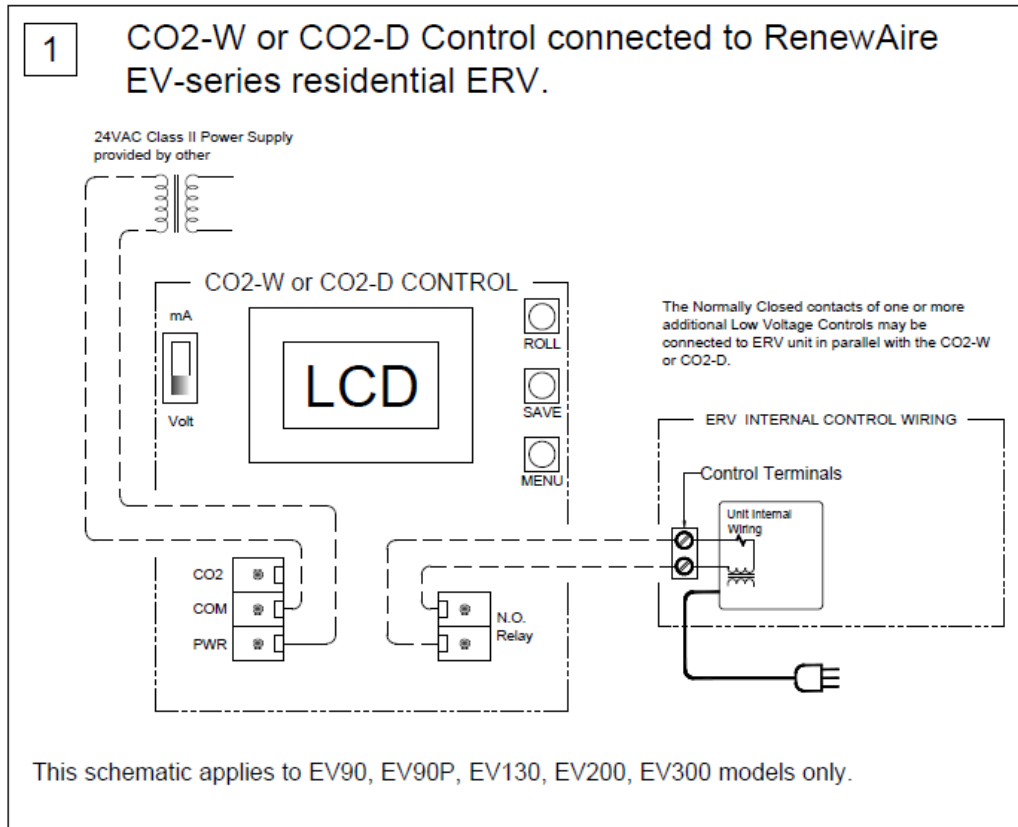


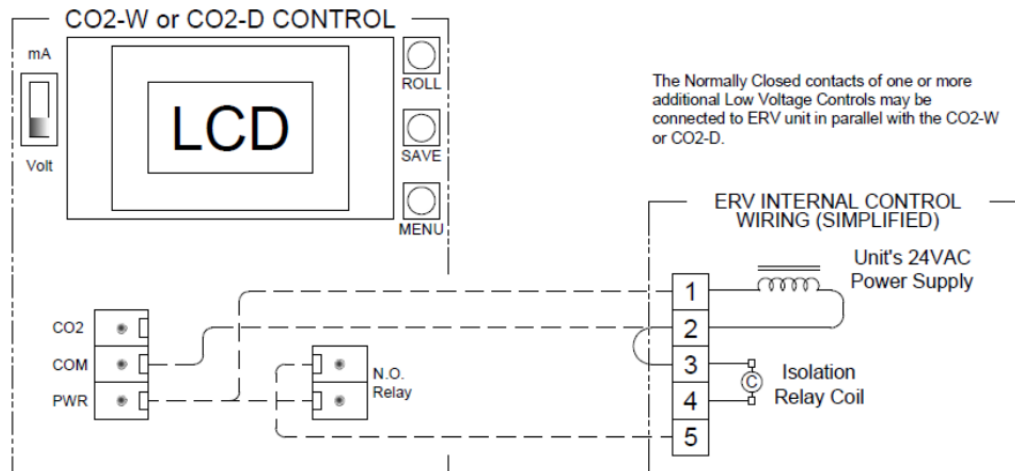
## Connection Schematics



*Due to continuing product development, specifications are subject to change without notice.*

3

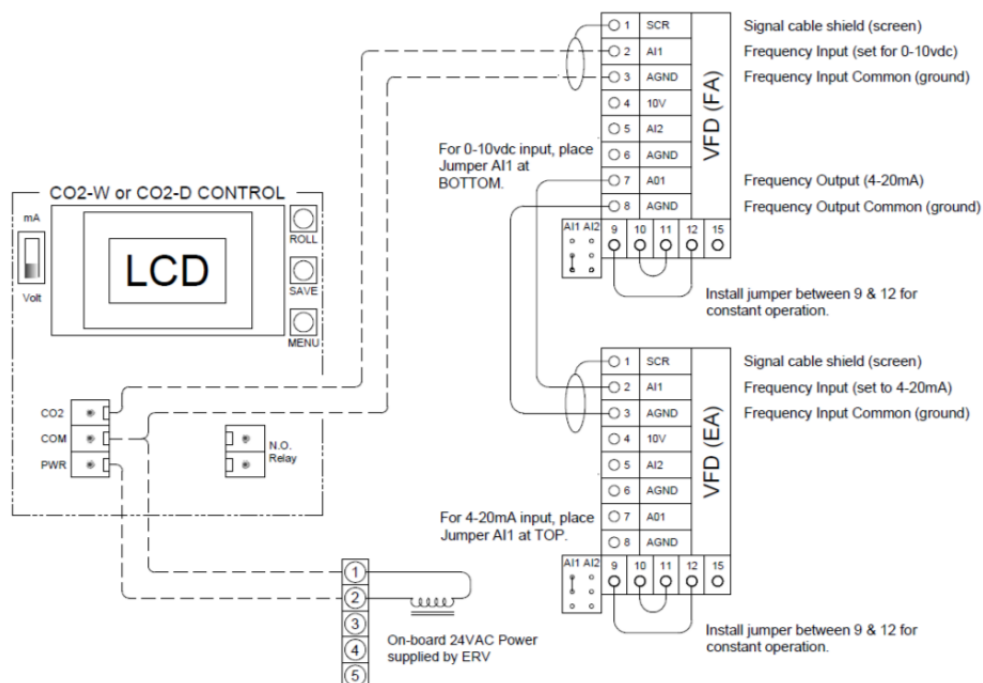
### CO2-W or CO2-D Control connected to RenewAire HE- and LE-series commercial ERV with terminal strip connections for controls.



This schematic applies to HE1XRT (outdoor) models, LE models, and all HE2X and larger models without VFDs or ECM motors.

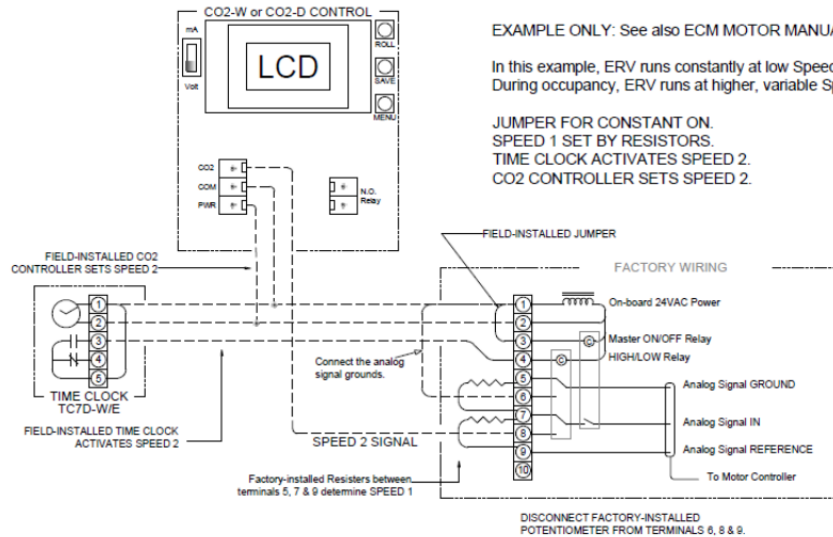
4

### CO2-W or CO2-D Control connected to RenewAire HE- and LE-series commercial ERV with factory-installed Variable Frequency Drives.

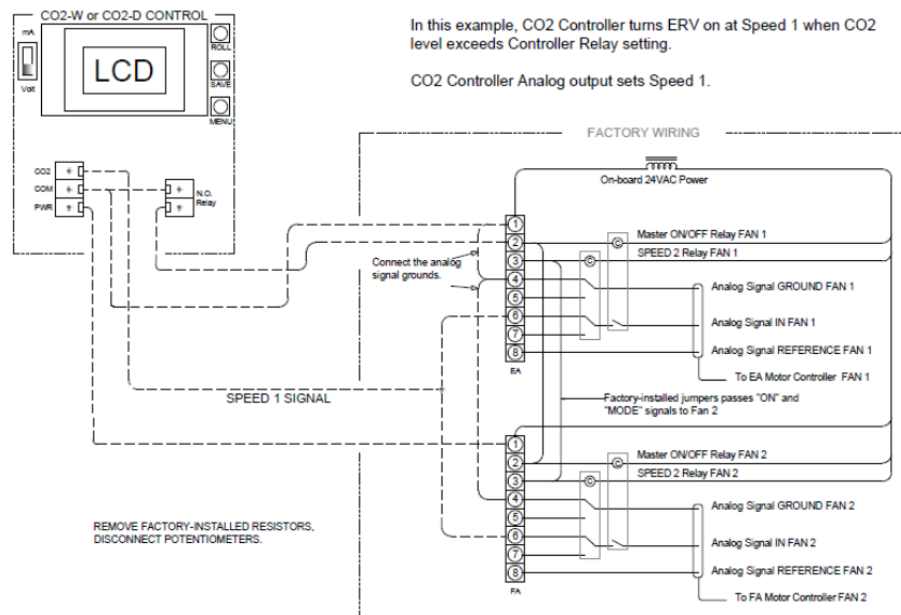


Due to continuing product development, specifications are subject to change without notice.

5 CO2-W or CO2-D Control connected to RenewAire EV-450 ERV with ECM motor.



6 CO2-W or CO2-D Control connected to RenewAire HE-iXIN ERV with ECM motors.



Due to continuing product development, specifications are subject to change without notice.