



Flexible Duct
Assembly

Hi-Velocity Flexible Duct

Quick and easy installation!



HE-Z Series
Air Handler

Hi-Velocity Flexible Duct can be installed quickly and easily, delivering the air quietly with a sound absorbing inner core. The inner core is made of a double lamination of foil laminate and clear polyester film which is interlaced with a galvanised steel wire (.041) having a 3/4" pitch.

The core is wrapped with fibreglass insulation certified "GREENGUARD" having a coefficient of R4.2/R8.4 and is encapsulated by a metalized vapour barrier reinforced with fibreglass string.



HE Flex Duct

HE Flexible Duct	Part Number
HE X 10' AFD R4.2 (2/box)	20062010010
HE X 15' AFD R4.2 (2/box)	20062010015
HE X 25' UFD R4.2 (1/box)	20062010025
HE X 10' AFD R8.4 (1/box)	20062030010
HE X 15' AFD R8.4 (1/box)	20062030015
HE X 25' UFD R8.4 (1/box)	20062030025



2" Flex Duct

2" Flexible Duct	Part Number
2" X 10' AFD R4.2 (4/box)	20020120010
2" X 15' AFD R4.2 (4/box)	20020120015
2" X 25' UFD R4.2 (1/box)	20020120025
2" X 10' AFD R8.4 (2/box)	20022120010
2" X 15' AFD R8.4 (2/box)	20022120015
2" X 25' UFD R8.4 (1/box)	20022120025

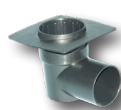
Our **HE Flex Duct** has been designed as a direct alternative for two 2" flex duct used in the Hi-Velocity System. i.e. 1 - 10' length of HE duct is the equivalent of TWO 2" -10' flex lengths. No changes are required to air handler selection and main plenum duct sizing.



Branch
Coupler



Branch Take-Off
w/ Gasket



Patented
Rough-In Boot



Rough-In
Cap



Vent Plate w/
Removable Grill

AFD (Assembled Flex Duct) includes 10' or 15' of flexible duct as specified, two Branch Couplers attached, one Branch Take-Off with Gasket assembly, one Rough-In Boot, one Rough-In Cap, and one Plastic Vent Plate.

UFD (Unassembled Flex Duct) includes 25' of flexible duct, one 2" UFD Kit (3 Branch Connector Tubes, 6 Branch Couplers and 6 tie wraps).

Technical Notes

UL Listed: Air Duct, Class 1	Maximum flame spread: 25
Maximum rated velocity: 5000 ft/min and/or 25.4 m/s	Maximum smoke developed: 50
Maximum rated positive pressure: 10 in. W.C and/or 2.5 Kpa	Standard UL 181
Maximum rated negative pressure: 0.5 in. W.C. and/or 0.12 Kpa	Standard CAN/ULC-S110M