



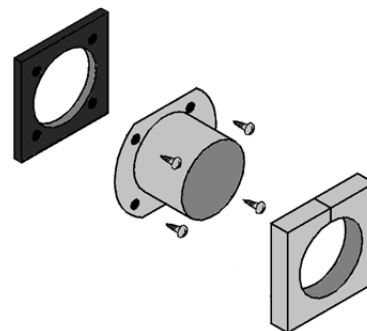
## Submittal Data Sheet

Fresh Air Intake (Duct Flange)

KDDQ44XA60

## DESCRIPTION

The Fresh Air Intake is a duct flange kit that attaches externally to the body of the ceiling mounted cassette type and allows for Fresh Air to be integrated into the indoor unit.



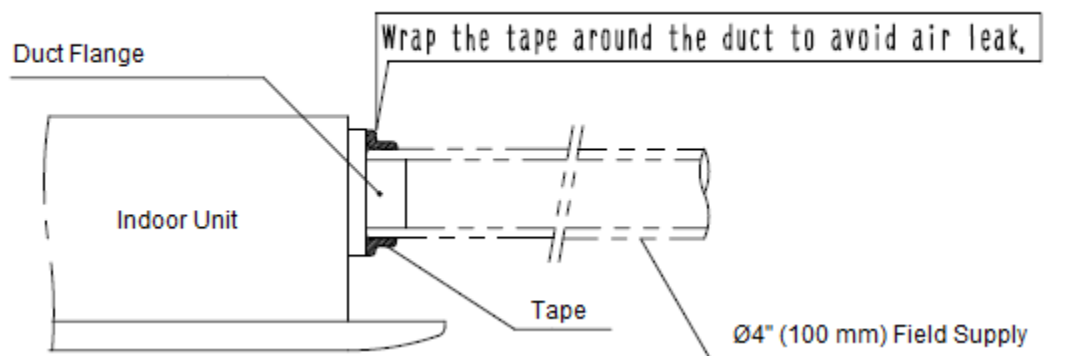
## SPECIFICATIONS

Model No.:	KDDQ44XA60
Components Included:	Duct flange, screws, insulation, insulation cover and installation manual
Unit Compatibility:	FXZQ07MVJU9, FXZQ09MVJU9, FXZQ12MVJU9, FXZQ15MVJU9, FXZQ18MVJU9 FFQ09LVJU, FFQ12LVJU, FFQ15LVJU, FFQ18LVJU FFQ09Q2VJU, FFQ12Q2VJU, FFQ15Q2VJU
Unit Weight:	Total shipping weight: 0.6 lbs (0.3 kgs)
Dimensions (W x H x D):	Total shipping dimensions: 5.8" x 5.8" x 3.8" (147mm x 147mm x 96.5 mm)
Material / Finish:	Metal duct pipe and plate / foam insulation
Power Supply:	N/A

### Notes:

- 1) When installing this kit, duct (nominal diameter: 4" (100mm)) is required (field supplied).
- 2) In case that metal duct is penetrated through walls, make sure that the duct and the wall is electrically insulated.
- 3) Install the duct on an inclined slope to the outdoor so that rain may not get into the duct (Inclination 1/100 to 1/50).
- 4) To avoid birds, small animals or insects getting inside the duct, make sure to install net where it contacts the outside air.

## TYPICAL INSTALLATION



Daikin North America LLC, 5151 San Felipe, Suite 500, Houston TX, 77056

[www.daikinac.com](http://www.daikinac.com) [www.daikincomfort.com](http://www.daikincomfort.com)

(Daikin's products are subject to continuous improvements. Daikin reserves the right to modify product design, specifications and information in this data sheet without notice and without incurring any obligations).