

February 2020

No. OCD699
REVISED EDITION-A

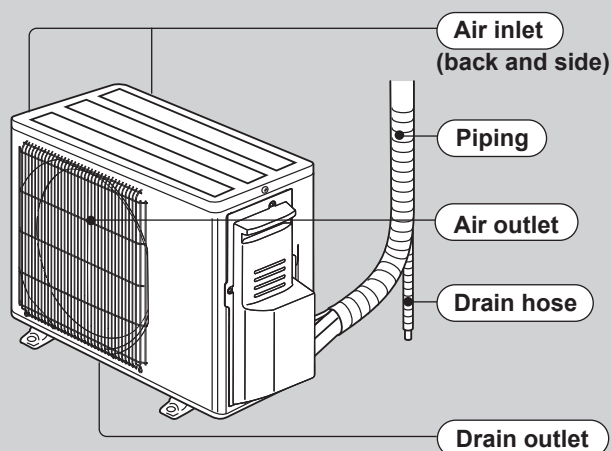
TECHNICAL DATA

R410A
Outdoor unit
[Model Name]
SUZ-KA09NA2
SUZ-KA09NAH2
SUZ-KA12NA2
SUZ-KA12NAH2
SUZ-KA15NA2
SUZ-KA15NAH2
[Service Ref.]
SUZ-KA09NA2.MX
SUZ-KA09NAH2.MX
SUZ-KA12NA2.MX
SUZ-KA12NAH2.MX
SUZ-KA15NA2.MX
SUZ-KA15NAH2.MX

Revision:

- Some descriptions have been modified in REVISED EDITION-A.

OCD699 is void.


SUZ-KA09NA(H)2.MX

CONTENTS

| | |
|--|---|
| 1. SPECIFICATION..... | 2 |
| 2. POSITION OF THE CENTER OF GRAVITY..... | 6 |
| 3. CORRECTION FACTORS..... | 6 |
| 4. DATA..... | 7 |
| 5. CAPACITY CORRECTION RATIO CURVE FOR PIPING LENGTH..... | 8 |
| 6. PART LOAD CAPACITY CHART..... | 9 |

SUZ-KA09NA(H)2.MX SUZ-KA12NA(H)2.MX SUZ-KA15NA(H)2.MX (SLZ Combination)

| Model name | Indoor unit | | SLZ-KF09NA | SLZ-KF12NA | SLZ-KF15NA |
|---------------------|----------------------------------|--------------|-------------------------|--------------------------------|----------------|
| | Outdoor unit | | SUZ-KA09NA(H)2 | SUZ-KA12NA(H)2 | SUZ-KA15NA(H)2 |
| Cooling | Rated Capacity | Btu/h | 9,000 | 12,000 | 14,100 |
| | Capacity Range | Btu/h | 3,600-9,000 | 3,900-12,000 | 5,100-14,100 |
| | Total input | W | 670 | 900 | 1,150 |
| | Energy Efficiency | EER | 13.4 | 13.3 | 12.2 |
| | | SEER | 22.4 | 22.0 | 19.8 |
| | Moisture Removal | Pints/h | 1.0 | 2.8 | 3.2 |
| | Sensible Heat Factor | | 0.87 | 0.74 | 0.75 |
| Heating at 47°F | Rated Capacity | Btu/h | 11,000 | 13,000 | 18,000 |
| | Capacity Range | Btu/h | 4,010-12,000 | 4,800-13,000 | 5,100-19,100 |
| | Total input | W | 810 | 1,310 | 1,730 |
| | HSPF(Region IV) | Btu/h/W | 12.2(11.5) | 11.4(10.9) | 11.2(10.9) |
| Heating at 17°F | Rated Capacity | Btu/h | 6,900 | 8,900 | 11,900 |
| | Rated Total input | W | 810(940) | 1,130(1,260) | 1,290(1,420) |
| | Maximum Capacity | Btu/h | 6,900 | 8,900 | 11,900 |
| | Maximum Total Input | W | 810(940) | 1,130(1,260) | 1,290(1,420) |
| Power supply | Voltage, Phase, Cycle | | 208/230V, 1-phase, 60Hz | | |
| Voltage | Indoor - Outdoor S1-S2 | | AC 208/230V | | |
| | Indoor - Outdoor S2-S3 | | DC12-24V | | |
| | Indoor - Remote controller | | DC12V | | |
| Indoor unit | MCA | A | 0.25 | 0.3 | 0.4 |
| | Fan Motor | F.L.A | 0.2 | 0.24 | 0.32 |
| | Fan Motor Output | W | 50 | | |
| | Air flow (Lo-Mid-Hi) | DRY(CFM) | 230-265-300 | 230-280-335 | 245-315-405 |
| | | WET(CFM) | 207-239-270 | 207-252-302 | 221-284-365 |
| | External Static Pressure | in WG | 0 | | |
| | Sound Pressure Level (Lo-Mid-Hi) | dB (A) | 25-28-31 | 25-30-34 | 27-34-39 |
| | External Finish Color | | Munsell 1.0Y 9.2/0.2 | | |
| | Dimensions | W: in | 22-7/16 | | |
| | | D: in | 22-7/16 | | |
| | | H: in | 8-3/16 | | |
| | Weight Unit | lbs | 30.6 | | |
| | Field Drainpipe O.D. | in | O.D. 1-1/4 | | |
| | Refrigerant pipe Gas | in | 3/8 | | 1/2 |
| | Refrigerant pipe Liquid | in | 1/4 | | |
| Outdoor unit | MCA | A | 9 | | 10 |
| | MOCP | A | 15 | 16 | 18 |
| | Fan Motor | F.L.A. | 0.50 | | |
| | Compressor | Model(Type) | DC INVERTER-driven | DC INVERTER-driven Twin Rotary | |
| | | R.L.A. | 6.2 | 6.6 | 7.4 |
| | | L.R.A. | 7.7 | 8.2 | 9.3 |
| | Air flow (Cooling/Heating) | CFM | (1,229/1,172) | (1,229/1,172) | (1,243/1,229) |
| | Refrigerant Control | | Linear Expansion Valve | | |
| | Defrost Method | | Reverse Cycle | | |
| | SPL (Cooling) | dB (A) | 48 | 49 | |
| | SPL (Heating) | dB (A) | 50 | 51 | |
| | External Finish Color | | Munsell No.3Y 7.8/1.1 | | |
| | Dimension | W: in | 31-1/2 | | |
| | | D: in | 11-1/4 | | |
| | | H: in | 21-5/8 | | |
| | Weight | lbs | 81 | | |
| | Remote Controller | Type | | Wired Remote Controller | |
| Refrigerant | Type | | R410A | | |
| | Charge | lbs, oz | 2,5 | 2,9 | |
| | Oil | Type(Fl.oz.) | FV50S(9.1) | FV50S(11.8) | |
| Refrigerant Pipe | Gas side O.D. | in | 3/8 | | 1/2 |
| | Liquid side O.D. | in | | 1/4 | |
| | Height Difference (Max) | ft | 40 | | |
| | Length (Max.) | ft | 65 | | |
| Connection Method | Indoor/Outdoor | | FI a red/Flared | | |
| Operation Guarantee | Cooling | °F | 14 - 115 | | |
| | Heating | °F | -4 - 75 | | |

NOTES : *1.Rating conditions (cooling)-Indoor : D.B. 26.7°C(80°F), W.B. 19.4°C(67°F) Outdoor : D.B. 35°C(95°F), W.B. 23.9°C(75°F)
 (heating)-Indoor : D.B. 21.1°C(70°F), W.B. 15.6°C(60°F) Outdoor : D.B. 8.3°C(47°F), W.B. 6.1°C(43°F)
 *2.Rating conditions(heating)-Indoor : D.B. 21.1°C(70°F), W.B. 15.6°C(60°F) Outdoor : D.B. -8.3°C(17°F), W.B. -9.4°C(15°F)

Operating range

| | | Indoor intake air temperature | | Outdoor intake air temperature | |
|---------|---------|--------------------------------------|--|------------------------------------|--|
| Cooling | Maximum | D.B. 35°C(95°F), W.B. 21.7°C(71°F) | | D.B. 46°C(115°F) | |
| | Minimum | D.B. 19.4°C(67°F), W.B. 13.9°C(57°F) | | D.B. -10°C(14°F) | |
| Heating | Maximum | D.B. 26.7°C(80°F), W.B. 19.4°C(67°F) | | D.B. 24°C(75°F), W.B. 18°C(65°F) | |
| | Minimum | D.B. 21.1°C(70°F), W.B. 15.6°C(60°F) | | D.B. -20°C(-4°F), W.B. -21°C(-5°F) | |

SUZ-KA09NA(H)2.MX SUZ-KA12NA(H)2.MX SUZ-KA15NA(H)2.MX (SEZ, SVZ Combination)

| Model name | Indoor unit | | SEZ-KD09NA4 | SEZ-KD12NA4 | SEZ-KD15NA4 | SVZ-KP12NA |
|---------------------|----------------------------------|-------------|-------------------------|--------------------------------|----------------|-----------------|
| | Outdoor unit | | SUZ-KA09NA(H)2 | SUZ-KA12NA(H)2 | SUZ-KA15NA(H)2 | SUZ-KA12NA(H)2 |
| Cooling | Rated Capacity | Btu/h | 9,000 | 12,000 | 15,000 | 12,000 |
| | Capacity Range | Btu/h | 3,900-9,000 | 4,000-12,000 | 5,200-15,000 | 4,300-12,000 |
| | Total input | W | 700 | 930 | 1,150 | 940 |
| | Energy Efficiency | EER | 12.8 | 12.9 | 13.0 | 12.7 |
| | | SEER | 18.8 | 20.5 | 19.0 | 18.0 |
| | Moisture Removal | Pints/h | 1.5 | 1.9 | 1.9 | 1.2 |
| | Sensible Heat Factor | | 0.82 | 0.82 | 0.86 | 0.89 |
| Heating at 47°F | Rated Capacity | Btu/h | 12,000 | 15,000 | 18,000 | 15,000 |
| | Capacity Range | Btu/h | 4,200-12,800 | 4,800-16,800 | 5,000-21,600 | 4,700-16,700 |
| | Total input | W | 1,100 | 1,330 | 1,440 | 1,210 |
| | HSPF(Region IV) | Btu/h/W | 11.0(10.4) | 12.4(11.8) | 11.4(11.0) | 12.1(11.5) |
| Heating at 17°F | Rated Capacity | Btu/h | 7,600 | 10,000 | 11,700 | 9,900 |
| | Rated Total input | W | 880(1,010) | 1,180(1,310) | 1,280(1,410) | 1,120(1,250) |
| | Maximum Capacity | Btu/h | 7,600 | 10,000 | 11,700 | 9,900 |
| | Maximum Total Input | W | 880(1,010) | 1,180(1,310) | 1,280(1,410) | 1,120(1,250) |
| Power supply | Voltage, Phase, Cycle | | 208/230V, 1-phase, 60Hz | | | |
| Voltage | Indoor - Outdoor S1-S2 | | AC 208/230V | | | |
| | Indoor - Outdoor S2-S3 | | DC12-24V | | | |
| | Indoor - Remote controller | | DC12V | | | |
| Indoor unit | MCA | A | 1.0 | | | 3.0 |
| | Fan Motor | F.L.A | 0.51 | 0.57 | 0.74 | 2.4 |
| | Fan Motor Output | W | 96 | | | 121 |
| | Air flow (Lo-Mid-Hi) | DRY(CFM) | 194-247-317 | 247-317-388 | 353-441-529 | 278-381-448 |
| | | WET(CFM) | 174-222-285 | 222-285-349 | 317-396-476 | — |
| | External Static Pressure | in WG | 0.02-0.06-0.14-0.20 | | | 0.3 - 0.5 - 0.8 |
| | Sound Pressure Level (Lo-Mid-Hi) | dB (A) | 23-26-30 | 23-28-33 | 30-34-37 | 29-36-39 |
| | External Finish Color | | Galvanized-steel Sheets | | | BLACK |
| | Dimensions | W: in | 31-1/8 | 39 | | 17 |
| | | D: in | 27-9/16 | | | 21-5/8 |
| | | H: in | 7-7/8 | | | 39-13/16 |
| | Weight Unit | lbs | 42 | 50 | 54 | 93 |
| | Field Drainpipe O.D. | in | O.D. 1-1/4 | | | O.D. 3/4 |
| | Refrigerant pipe Gas | in | 3/8 | | 1/2 | 3/8 |
| | Refrigerant pipe Liquid | in | 1/4 | | | |
| Outdoor unit | MCA | A | 9 | | 10 | 9 |
| | MOCP | A | 15 | 16 | 18 | 16 |
| | Fan Motor | F.L.A. | 0.50 | | | |
| | Compressor | Model(Type) | DC INVERTER-driven | DC INVERTER-driven Twin Rotary | | |
| | | R.L.A. | 6.2 | 6.6 | 7.4 | 6.6 |
| | | L.R.A. | 7.7 | 8.2 | 9.3 | 8.2 |
| | Air flow (Cooling/Heating) | CFM | (1,229/1,172) | (1,229/1,172) | (1,243/1,229) | (1,229/1,172) |
| | Refrigerant Control | | Linear Expansion Valve | | | |
| | Defrost Method | | Reverse Cycle | | | |
| | SPL (Cooling) | dB (A) | 48 | 49 | | |
| | SPL (Heating) | dB (A) | 50 | 51 | | |
| | External Finish Color | | Munsell No.3Y 7.8/1.1 | | | |
| | Dimension | W: in | 31-1/2 | | | |
| | | D: in | 11-1/4 | | | |
| | | H: in | 21-5/8 | | | |
| | Weight | lbs | 81 | | | |
| | Remote Controller | Type | | Wired Remote Controller | | |
| Refrigerant | Type | | R410A | | | |
| | Charge | lbs, oz | 2,5 | | 2,9 | |
| | Oil | Type(Fl.oz) | FV50S(9.1) | | FV50S(11.8) | |
| Refrigerant Pipe | Gas side O.D. | in | 3/8 | | 1/2 | 3/8 |
| | Liquid side O.D. | in | 1/4 | | | |
| | Height Difference (Max) | ft | 40 | | | |
| | Length (Max.) | ft | 65 | | | |
| Connection Method | Indoor/Outdoor | | Flared/Flared | | | |
| Operation Guarantee | Cooling | °F | 14 - 115 | | | |
| | Heating | °F | -4 - 75 | | | |

NOTES : *1.Rating conditions (cooling)-Indoor : D.B. 26.7°C(80°F), W.B. 19.4°C(67°F) Outdoor : D.B. 35°C(95°F), W.B. 23.9°C(75°F)
 (heating)-Indoor : D.B. 21.1°C(70°F), W.B. 15.6°C(60°F) Outdoor : D.B. 8.3°C(47°F), W.B. 6.1°C(43°F)
 *2.Rating conditions(heating)-Indoor : D.B. 21.1°C(70°F), W.B. 15.6°C(60°F) Outdoor : D.B. -8.3°C(17°F), W.B. -9.4°C(15°F)

Operating range

| | | Indoor intake air temperature | | Outdoor intake air temperature | |
|---------|---------|--------------------------------------|--|------------------------------------|--|
| Cooling | Maximum | D.B. 35°C(95°F), W.B. 21.7°C(71°F) | | D.B. 46°C(115°F) | |
| | Minimum | D.B. 19.4°C(67°F), W.B. 13.9°C(57°F) | | D.B. -10°C(14°F) | |
| Heating | Maximum | D.B. 26.7°C(80°F), W.B. 19.4°C(67°F) | | D.B. 24°C(75°F), W.B. 18°C(65°F) | |
| | Minimum | D.B. 21.1°C(70°F), W.B. 15.6°C(60°F) | | D.B. -20°C(-4°F), W.B. -21°C(-5°F) | |

SUZ-KA09NA(H)2.MX SUZ-KA12NA(H)2.MX SUZ-KA15NA(H)2.MX (PEAD Combination)

| Model name | Indoor unit | | PEAD-A09AA7 | PEAD-A12AA7 | PEAD-A15AA7 |
|---------------------|----------------------------------|--------------|--------------------------|--------------------------------|----------------|
| | Outdoor unit | | SUZ-KA09NA(H)2 | SUZ-KA12NA(H)2 | SUZ-KA15NA(H)2 |
| Cooling | Rated Capacity | Btu/h | 9,000 | 12,000 | 15,000 |
| | Capacity Range | Btu/h | 4,300-9,000 | 4,400-12,000 | 5,500-15,000 |
| | Total input | W | 720 | 930 | 1,150 |
| | Energy Efficiency | EER | 12.5 | 12.9 | 13.0 |
| | | SEER | 19.7 | 20.5 | 19.2 |
| | Moisture Removal | Pints/h | 0.8 | 1.1 | 1.3 |
| | Sensible Heat Factor | | 0.90 | 0.9 | 0.9 |
| Heating at 47°F | Rated Capacity | Btu/h | 12,000 | 15,000 | 18,000 |
| | Capacity Range | Btu/h | 3,960-13,000 | 4,800-17,000 | 4,900-21,500 |
| | Total input | W | 900 | 1,160 | 1,350 |
| | HSPF(Region IV) | Btu/h/W | 12.6(11.9) | 13.0(12.4) | 11.6(11.2) |
| Heating at 17°F | Rated Capacity | Btu/h | 7,600 | 9,900 | 11,300 |
| | Rated Total input | W | 880(1,010) | 1,070(1,200) | 1,220(1,350) |
| | Maximum Capacity | Btu/h | 7,600 | 9,900 | 11,300 |
| | Maximum Total Input | W | 880(1,010) | 1,070(1,200) | 1,220(1,350) |
| Power supply | Voltage, Phase, Cycle | | 208/230V, 1-phase, 60Hz | | |
| Voltage | Indoor - Outdoor S1-S2 | | AC 208/230V | | |
| | Indoor - Outdoor S2-S3 | | DC12-24V | | |
| | Indoor - Remote controller | | DC12V | | |
| Indoor unit | MCA | A | 1.45 | | 1.69 |
| | Fan Motor | F.L.A | 1.16 | | 1.35 |
| | Fan Motor Output | W | 85 | | |
| | Air flow (Lo-Mid-Hi) | DRY(CFM) | 282-318-353 | 353-424-494 | 424-512-600 |
| | | WET(CFM) | 254-286-318 | 318-382-445 | 382-461-540 |
| | External Static Pressure | in WG | 0.14-0.20-0.28-0.40-0.60 | | |
| | Sound Pressure Level (Lo-Mid-Hi) | dB (A) | 24-26-28 | 28-30-34 | 30-33-37 |
| | External Finish Color | | Galvanized Sheets | | |
| | Dimensions | W: in | 35-7/16 | | |
| | | D: in | 28-7/8 | | |
| | | H: in | 9-7/8 | | |
| | Weight Unit | lbs | 58 | | 62 |
| | Field Drainpipe O.D. | in | O.D. 1-1/4 | | |
| | Refrigerant pipe Gas | in | 3/8 | 1/2 | |
| | Refrigerant pipe Liquid | in | 1/4 | | |
| Outdoor unit | MCA | A | 9 | | 10 |
| | MOCP | A | 15 | 16 | 18 |
| | Fan Motor | F.L.A. | 0.50 | | |
| | Compressor | Model(Type) | DC INVERTER-driven | DC INVERTER-driven Twin Rotary | |
| | | R.L.A. | 6.2 | 6.6 | 7.4 |
| | | L.R.A. | 7.7 | 8.2 | 9.3 |
| | Air flow (Cooling/Heating) | CFM | (1,229/1,172) | (1,229/1,172) | (1,243/1,229) |
| | Refrigerant Control | | Linear Expansion Valve | | |
| | Defrost Method | | Reverse Cycle | | |
| | SPL (Cooling) | dB (A) | 48 | 49 | |
| | SPL (Heating) | dB (A) | 50 | 51 | |
| | External Finish Color | | Munsell No.3Y 7.8/1.1 | | |
| | Dimension | W: in | 31-1/2 | | |
| | | D: in | 11-1/4 | | |
| | | H: in | 21-5/8 | | |
| | Weight | lbs | 81 | | |
| | Remote Controller | Type | | Wired Remote Controller | |
| Refrigerant | Type | | R410A | | |
| | Charge | lbs, oz | 2,5 | 2,9 | |
| | Oil | Type(Fl.oz.) | FV50S(9.1) | FV50S(11.8) | |
| Refrigerant Pipe | Gas side O.D. | in | 3/8 | | 1/2 |
| | Liquid side O.D. | in | 1/4 | | |
| | Height Difference (Max) | ft | 40 | | |
| | Length (Max.) | ft | 65 | | |
| Connection Method | Indoor/Outdoor | | Flared/Flared | | |
| Operation Guarantee | Cooling | °F | 14 - 115 | | |
| | Heating | °F | -4 - 75 | | |

NOTES : *1.Rating conditions (cooling)-Indoor : D.B. 26.7°C(80°F), W.B. 19.4°C(67°F) Outdoor : D.B. 35°C(95°F), W.B. 23.9°C(75°F)
 (heating)-Indoor : D.B. 21.1°C(70°F), W.B. 15.6°C(60°F) Outdoor : D.B. 8.3°C(47°F), W.B. 6.1°C(43°F)
 *2.Rating conditions(heating)-Indoor : D.B. 21.1°C(70°F), W.B. 15.6°C(60°F) Outdoor : D.B. -8.3°C(17°F), W.B. -9.4°C(15°F)

Operating range

| | | Indoor intake air temperature | | Outdoor intake air temperature | |
|---------|---------|--------------------------------------|--|------------------------------------|--|
| Cooling | Maximum | D.B. 35°C(95°F), W.B. 21.7°C(71°F) | | D.B. 46°C(115°F) | |
| | Minimum | D.B. 19.4°C(67°F), W.B. 13.9°C(57°F) | | D.B. -10°C(14°F) | |
| Heating | Maximum | D.B. 26.7°C(80°F), W.B. 19.4°C(67°F) | | D.B. 24°C(75°F), W.B. 18°C(65°F) | |
| | Minimum | D.B. 21.1°C(70°F), W.B. 15.6°C(60°F) | | D.B. -20°C(-4°F), W.B. -21°C(-5°F) | |

SUZ-KA09NA(H)2.MX SUZ-KA12NA(H)2.MX (MLZ Combination)

| Model name | Indoor unit | | MLZ-KP09NA | MLZ-KP12NA |
|---------------------|----------------------------------|------------------|----------------------------|--------------------------------|
| | Outdoor unit | | SUZ-KA09NA(H)2 | SUZ-KA12NA(H)2 |
| Cooling | Rated Capacity | Btu/h | 9,000 | 12,000 |
| | Capacity Range | Btu/h | 3,600-9,000 | 3,900-12,000 |
| | Total input | W | 710 | 960 |
| | Energy Efficiency | EER | 12.6 | 12.5 |
| | | SEER | 19.5 | 19.8 |
| | Moisture Removal | Pints/h | 1.5 | 2.8 |
| | Sensible Heat Factor | | 0.82 | 0.74 |
| Heating at 47°F | Rated Capacity | Btu/h | 12,000 | 15,400 |
| | Capacity Range | Btu/h | 4,010-13,000 | 4,600-17,000 |
| | Total input | W | 860 | 1,300 |
| | HSPF(Region IV) | Btu/h/W | 13.3(12.5) | 12.1(11.6) |
| | | | | |
| Heating at 17°F | Rated Capacity | Btu/h | 7,700 | 9,900 |
| | Rated Total input | W | 700(830) | 1,020(1,150) |
| | Maximum Capacity | Btu/h | 7,700 | 9,900 |
| | Maximum Total Input | W | 700(830) | 1,020(1,150) |
| Power supply | Voltage, Phase, Cycle | | 208/230V, 1-phase, 60Hz | |
| Voltage | Indoor - Outdoor S1-S2 | | AC 208/230V | |
| | Indoor - Outdoor S2-S3 | | DC12-24V | |
| | Indoor - Remote controller | | DC12V | |
| Indoor unit | MCA | A | 1.0 | |
| | Fan Motor | F.L.A | 0.68 | |
| | Fan Motor Output | W | 30 | |
| | Air flow (SLo-Lo-Mid-Hi) | Cooling DRY(CFM) | 212-254-283-311 | 212-258-297-332 |
| | | Heating WET(CFM) | 180-216-240-264 | 180-219-252-282 |
| | | Heating (CFM) | 212-247-290-325 | 212-272-311-350 |
| | External Static Pressure | in WG | 0 | |
| | Sound Pressure Level (Lo-Mid-Hi) | Cooling dB (A) | 27-31-34-38 | 27-32-36-40 |
| | | Heating dB (A) | 26-29-34-37 | 26-32-36-40 |
| | External Finish Color | | Munsell 4.0GY 9.1/0.2 | |
| | Dimensions | W: in | 43-3/8 | |
| | | D: in | 14-3/16 | |
| | | H: in | 7-5/16 | |
| | Weight Unit | lbs | 34 | |
| | Field Drainpipe O.D. | in | O.D. 1-1/4 | |
| | Refrigerant pipe Gas | in | 3/8 | |
| | Refrigerant pipe Liquid | in | 1/4 | |
| Outdoor unit | MCA | A | 9 | |
| | MOCP | A | 15 | 16 |
| | Fan Motor | F.L.A. | 0.50 | |
| | Compressor | Model(Type) | DC INVERTER-driven | DC INVERTER-driven Twin Rotary |
| | | R.L.A. | 6.2 | 6.6 |
| | | L.R.A. | 7.7 | 8.2 |
| | Air flow (Cooling/Heating) | CFM | (1,229/1,172) | (1,229/1,172) |
| | Refrigerant Control | | Linear Expansion Valve | |
| | Defrost Method | | Reverse Cycle | |
| | SPL (Cooling) | dB (A) | 48 | 49 |
| | SPL (Heating) | dB (A) | 50 | 51 |
| | External Finish Color | | Munsell No.3Y 7.8/1.1 | |
| | Dimension | W: in | 31-1/2 | |
| | | D: in | 11-1/4 | |
| | | H: in | 21-5/8 | |
| | Weight | lbs | 81 | |
| Remote Controller | Type | | Wireless Remote Controller | |
| Refrigerant | Type | | R410A | |
| | Charge | lbs, oz | 2,5 | 2,9 |
| | Oil | Type(Fl.oz.) | FV50S(9.1) | FV50S(11.8) |
| Refrigerant Pipe | Gas side O.D. | in | 3/8 | |
| | Liquid side O.D. | in | 1/4 | |
| | Height Difference (Max) | ft | 40 | |
| | Length (Max.) | ft | 65 | |
| Connection Method | Indoor/Outdoor | | Flared/Flared | |
| Operation Guarantee | Cooling | °F | 14 - 115 | |
| | Heating | °F | -4 - 75 | |

NOTES : *1.Rating conditions (cooling)-Indoor : D.B. 26.7°C(80°F), W.B. 19.4°C(67°F) Outdoor : D.B. 35°C(95°F), W.B. 23.9°C(75°F)
 (heating)-Indoor : D.B. 21.1°C(70°F), W.B. 15.6°C(60°F) Outdoor : D.B. 8.3°C(47°F), W.B. 6.1°C(43°F)
 *2.Rating conditions(heating)-Indoor : D.B. 21.1°C(70°F), W.B. 15.6°C(60°F) Outdoor : D.B. -8.3°C(17°F), W.B. -9.4°C(15°F)

Operating range

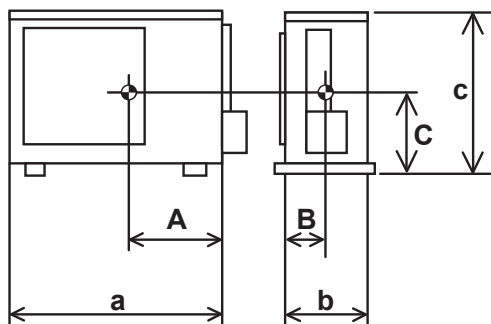
| | | Indoor intake air temperature | | Outdoor intake air temperature | |
|---------|---------|--------------------------------------|--|------------------------------------|--|
| Cooling | Maximum | D.B. 35°C(95°F), W.B. 21.7°C(71°F) | | D.B. 46°C(115°F) | |
| | Minimum | D.B. 19.4°C(67°F), W.B. 13.9°C(57°F) | | D.B. -10°C(14°F) | |
| Heating | Maximum | D.B. 26.7°C(80°F), W.B. 19.4°C(67°F) | | D.B. 24°C(75°F), W.B. 18°C(65°F) | |
| | Minimum | D.B. 21.1°C(70°F), W.B. 15.6°C(60°F) | | D.B. -20°C(-4°F), W.B. -21°C(-5°F) | |

2

POSITION OF THE CENTER OF GRAVITY

2-1. OUTDOOR UNIT

Unit: inch(mm)



| Model | A | B | C | a | b | c |
|---|------------------|-----------------|----------------|-----------------|-----------------|-----------------|
| SUZ-KA09/12/15NA2 SUZ-KA09/12/15NAH2 | 11-1/16 (280) | 5-9/16 (140) | 9-1/2 (240) | 31-1/2 (800) | 11-1/4 (285) | 21-5/8 (550) |

3

CORRECTION FACTORS

3-1. INVERTER TYPE

3-1.1 Cooling capacity corrections

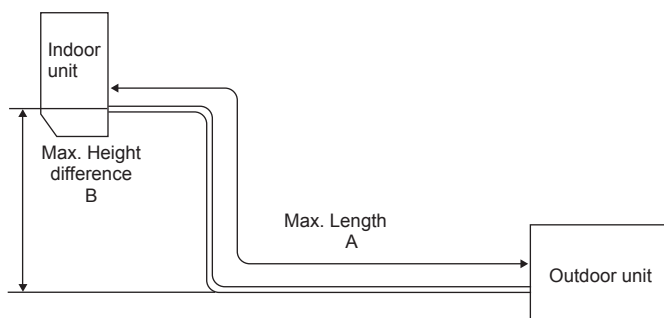
| Model | Refrigerant piping length (one way: ft) | | | |
|---|---|-------|-------|-----|
| | 25 (std.) | 40 | 65 | 100 |
| SUZ-KA09/12/15NA2 SUZ-KA09/12/15NAH2 | 1.0 | 0.988 | 0.967 | - |

3-1.2 Heating capacity corrections

| Model | Refrigerant piping length (one way: ft) | | | |
|---|---|-------|-------|-----|
| | 25 (std.) | 40 | 65 | 100 |
| SUZ-KA09/12/15NA2 SUZ-KA09/12/15NAH2 | 1.0 | 0.997 | 0.993 | - |

3-1.3 Max. refrigerant piping length & max. Height difference

| Model | Refrigerant piping: ft | | Piping size O.D: in | |
|-----------------------------------|------------------------|--------------------------------|---------------------|--------|
| | Max. Length A | Max. Height difference B | Gas | Liquid |
| SUZ-KA09/12NA2 SUZ-KA09/12NAH2 | 65 | 40 | 3/8 | 1/4 |
| SUZ-KA15NA2 SUZ-KA15NAH2 | 65 | 40 | 1/2 | 1/4 |



3-1.4 Additional refrigerant charge (R410A: oz)

NOTE: Refrigerant piping exceeding 25 ft requires additional refrigerant charge according to the calculation.

| Model | Outdoor unit precharged | Refrigerant piping length (one way): ft | | | | | |
|-----------------------------|----------------------------|---|------|------|------|------|------|
| | | 25 | 30 | 40 | 50 | 60 | 65 |
| SUZ-KA09NA2 SUZ-KA09NAH2 | 2 lb 5 oz | 0 | 1.08 | 3.24 | 5.40 | 7.56 | 8.64 |
| SUZ-KA12NA2 SUZ-KA12NAH2 | 2 lb 9 oz | | | | | | |
| SUZ-KA15NA2 SUZ-KA15NAH2 | | | | | | | |

Calculation: $X \text{ oz} = 1.08/5 \text{ oz/ft} \times (\text{Refrigerant piping length (ft)} - 25)$

4

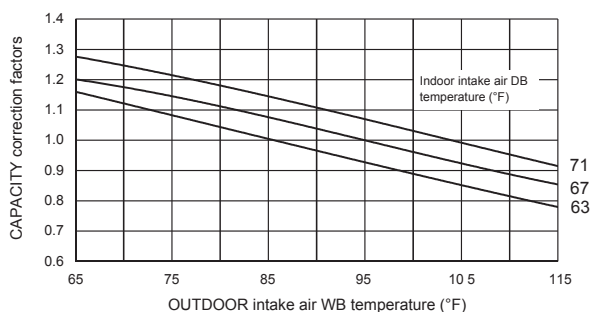
DATA

4-1. PERFORMANCE CURVE

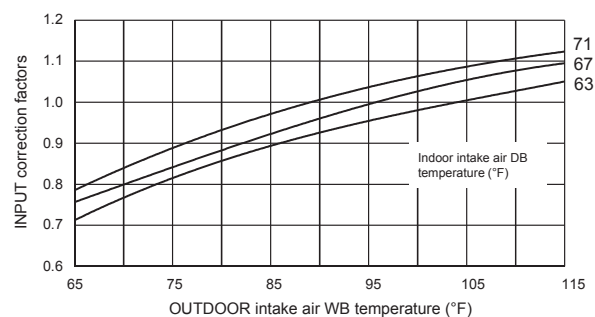
COOLING

SUZ-KA09/12/15NA(H)2.MX

Cooling capacity



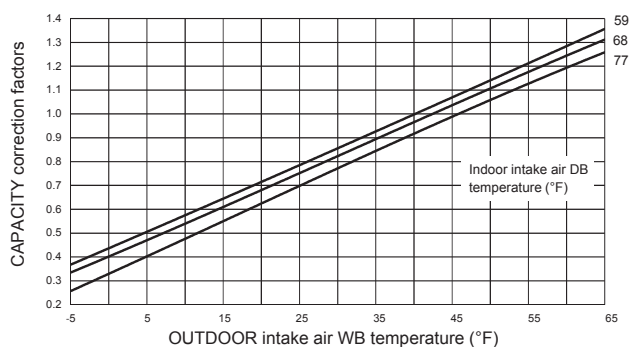
Total input (Cooling)



HEATING

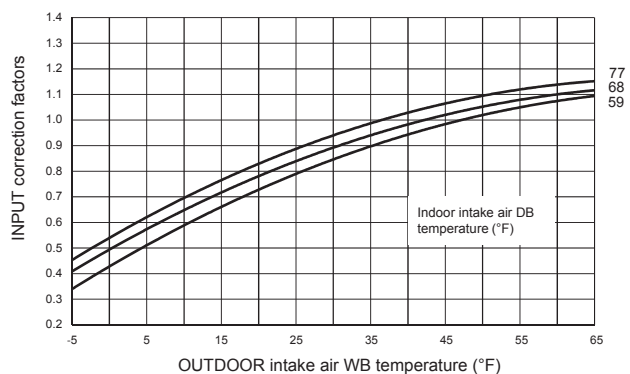
SUZ-KA09/12/15/NA(H)2.MX

Heating capacity



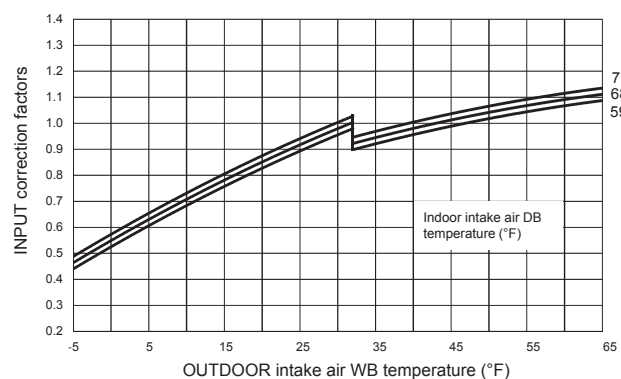
SUZ-KA09/12/15/NA2.MX

Total input (Heating)



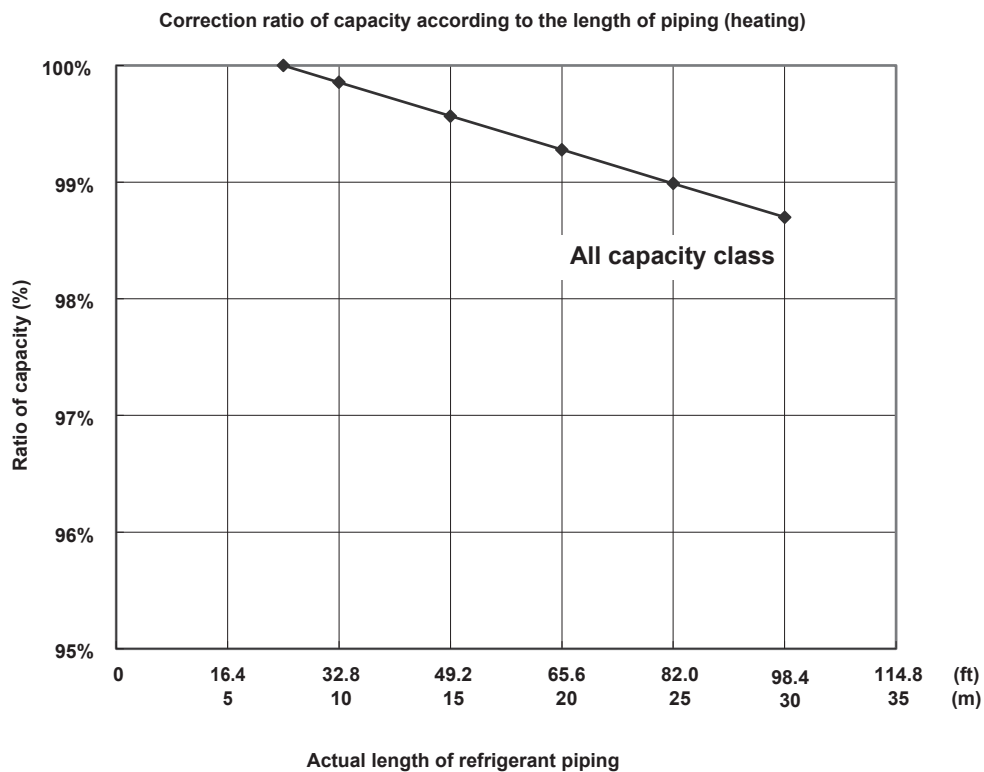
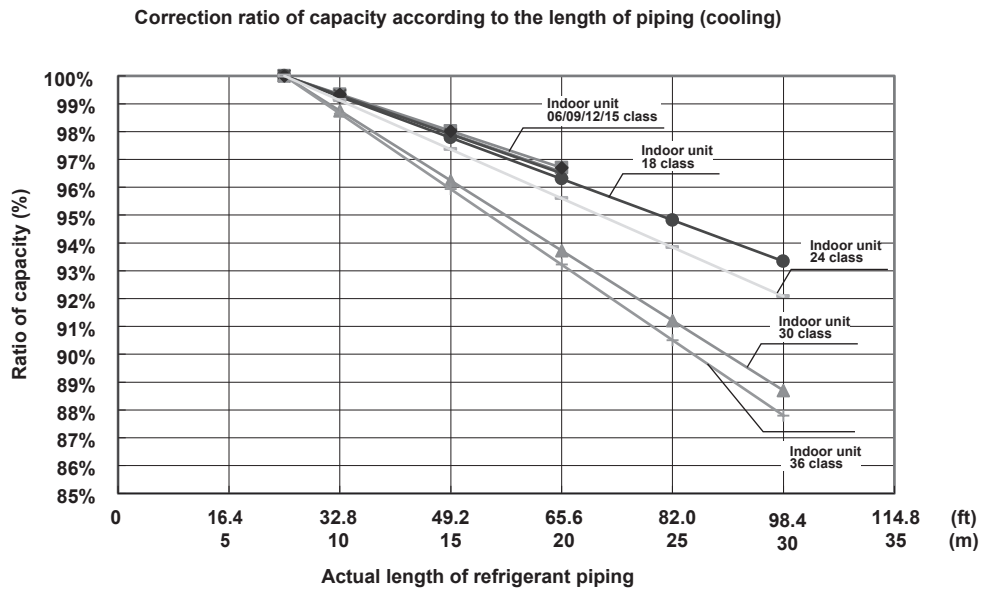
SUZ-KA09/12/15/NAH2.MX

Total input (Heating)



5 CAPACITY CORRECTION RATIO CURVE FOR PIPING LENGTH

5-1. CAPACITY CORRECTION RATIO CURVE FOR PIPING LENGTH



The length intended for the capacity calculation, which counts the length of refrigerant piping and the number of bends, is called actual length.

Length of refrigerant piping (ft) + (Number of bends × 0.984 ft) = Actual length of refrigerant piping (ft)
 [Length of refrigerant piping (m) + (Number of bends × 0.3 m) = Actual length of refrigerant piping (m)]

SEZ-KD09NA4R1.TH

SUZ-KA09NA2.MX

1) COOLING

Rated

Q(Btu/h): 9,000

W: 700

| Indoor W.B. Outdoor D.B. (°F) (°C) | | 71°F / 21.7°C | | | | | | | 67°F / 19.4°C | | | | | | | 63°F / 17.2°C | | | | | | |
|--|------|---------------|--------|--------|-------|-------|-----|-------|---------------|--------|-------|-------|-----|-------|--|---------------|--------|-------|-------|-----|-------|--|
| | | Max | Rated | 75% | 50% | 25% | Min | | Max | Rated | 75% | 50% | 25% | Min | | Max | Rated | 75% | 50% | 25% | Min | |
| 115 | 46.1 | Q(Btu/h) | 8,216 | 8,216 | 6,162 | 4,108 | - | 3,560 | 7,693 | 7,693 | 5,770 | 3,846 | - | 3,334 | | 7,021 | 7,021 | 5,266 | 3,510 | - | 3,042 | |
| | | W | 786 | 786 | 590 | 393 | - | 258 | 767 | 767 | 575 | 384 | - | 252 | | 735 | 735 | 551 | 368 | - | 242 | |
| 110 | 43.3 | Q(Btu/h) | 8,589 | 8,589 | 6,442 | 4,295 | - | 3,722 | 7,992 | 7,992 | 5,994 | 3,996 | - | 3,463 | | 7,320 | 7,320 | 5,490 | 3,660 | - | 3,172 | |
| | | W | 774 | 774 | 580 | 387 | - | 254 | 754 | 754 | 566 | 377 | - | 248 | | 719 | 719 | 539 | 360 | - | 236 | |
| 105 | 40.6 | Q(Btu/h) | 8,963 | 8,963 | 6,722 | 4,481 | - | 3,884 | 8,290 | 8,290 | 6,218 | 4,145 | - | 3,593 | | 7,693 | 7,693 | 5,770 | 3,846 | - | 3,334 | |
| | | W | 764 | 764 | 573 | 382 | - | 251 | 735 | 735 | 551 | 368 | - | 242 | | 703 | 703 | 527 | 352 | - | 231 | |
| 100 | 37.8 | Q(Btu/h) | 9,261 | 9,261 | 6,946 | 4,631 | - | 4,013 | 8,664 | 8,664 | 6,498 | 4,332 | - | 3,754 | | 7,992 | 7,992 | 5,994 | 3,996 | - | 3,463 | |
| | | W | 742 | 742 | 556 | 371 | - | 244 | 719 | 719 | 539 | 360 | - | 236 | | 687 | 687 | 515 | 344 | - | 226 | |
| 95 | 35.0 | Q(Btu/h) | 9,635 | 9,635 | 7,226 | 4,817 | - | 4,175 | 9,000 | 9,000 | 6,750 | 4,500 | - | 3,900 | | 8,365 | 8,365 | 6,274 | 4,183 | - | 3,625 | |
| | | W | 729 | 729 | 547 | 364 | - | 239 | 700 | 700 | 525 | 350 | - | 230 | | 671 | 671 | 503 | 336 | - | 221 | |
| 90 | 32.2 | Q(Btu/h) | 9,934 | 9,934 | 7,450 | 4,967 | - | 4,305 | 9,336 | 9,336 | 7,002 | 4,668 | - | 4,046 | | 8,664 | 8,664 | 6,498 | 4,332 | - | 3,754 | |
| | | W | 703 | 703 | 527 | 352 | - | 231 | 671 | 671 | 503 | 336 | - | 221 | | 646 | 646 | 484 | 323 | - | 212 | |
| 85 | 29.4 | Q(Btu/h) | 10,307 | 10,307 | 7,730 | 5,154 | - | 4,466 | 9,710 | 9,710 | 7,282 | 4,855 | - | 4,207 | | 9,037 | 9,037 | 6,778 | 4,519 | - | 3,916 | |
| | | W | 678 | 678 | 508 | 339 | - | 223 | 646 | 646 | 484 | 323 | - | 212 | | 623 | 623 | 467 | 312 | - | 205 | |
| 80 | 26.7 | Q(Btu/h) | 10,606 | 10,606 | 7,954 | 5,303 | - | 4,596 | 10,008 | 10,008 | 7,506 | 5,004 | - | 4,337 | | 9,411 | 9,411 | 7,058 | 4,705 | - | 4,078 | |
| | | W | 652 | 652 | 489 | 326 | - | 214 | 617 | 617 | 463 | 308 | - | 203 | | 598 | 598 | 448 | 299 | - | 196 | |
| 75 | 23.9 | Q(Btu/h) | 10,979 | 10,979 | 8,234 | 5,490 | - | 4,758 | 10,307 | 10,307 | 7,730 | 5,154 | - | 4,466 | | 9,747 | 9,747 | 7,310 | 4,873 | - | 4,224 | |
| | | W | 623 | 623 | 467 | 312 | - | 205 | 588 | 588 | 441 | 294 | - | 193 | | 575 | 575 | 431 | 287 | - | 189 | |
| 70 | 21.1 | Q(Btu/h) | 11,241 | 11,241 | 8,430 | 5,620 | - | 4,871 | 10,531 | 10,531 | 7,898 | 5,266 | - | 4,563 | | 10,083 | 10,083 | 7,562 | 5,041 | - | 4,369 | |
| | | W | 591 | 591 | 443 | 296 | - | 194 | 563 | 563 | 422 | 281 | - | 185 | | 540 | 540 | 405 | 270 | - | 177 | |
| 67 | 19.4 | Q(Btu/h) | 11,353 | 11,353 | 8,515 | 5,676 | - | 4,920 | 10,755 | 10,755 | 8,066 | 5,378 | - | 4,661 | | 10,307 | 10,307 | 7,730 | 5,154 | - | 4,466 | |
| | | W | 563 | 563 | 422 | 281 | - | 185 | 540 | 540 | 405 | 270 | - | 177 | | 511 | 511 | 384 | 256 | - | 168 | |

* It may not reach the above capacities in low ambient temperatures.

SEZ-KD09NA4R1.TH

SUZ-KA09NA2.MX

2) HEATING

Rated
Q(Btu/h): 12,000
W: 1,100

| Indoor D.B. Outdoor W.B. (°F) (°C) | | | 77°F / 25.0°C | | | | | | 68°F / 20.0°C | | | | | | 59°F / 15.0°C | | | | | |
|--|-------|----------|---------------|--------|--------|-------|-----|-------|---------------|--------|--------|-------|-----|-------|---------------|--------|--------|-------|-----|-------|
| | | | Max | Rated | 75% | 50% | 25% | Min | Max | Rated | 75% | 50% | 25% | Min | Max | Rated | 75% | 50% | 25% | Min |
| 65 | 18.3 | Q(Btu/h) | 16,109 | 15,102 | 11,327 | 7,551 | - | 5,286 | 16,790 | 15,741 | 11,806 | 7,871 | - | 5,509 | 17,362 | 15,840 | 11,880 | 7,920 | - | 5,544 |
| | | W | 1,428 | 1,267 | 950 | 633 | - | 299 | 1,384 | 1,228 | 921 | 614 | - | 290 | 1,345 | 1,150 | 862 | 575 | - | 272 |
| 60 | 15.6 | Q(Btu/h) | 15,279 | 14,324 | 10,743 | 7,162 | - | 5,013 | 15,929 | 14,934 | 11,200 | 7,467 | - | 5,227 | 16,441 | 15,300 | 11,475 | 7,650 | - | 5,355 |
| | | W | 1,412 | 1,252 | 939 | 626 | - | 296 | 1,364 | 1,210 | 908 | 605 | - | 286 | 1,329 | 1,139 | 854 | 569 | - | 269 |
| 55 | 12.8 | Q(Btu/h) | 14,424 | 13,522 | 10,142 | 6,761 | - | 4,733 | 15,053 | 14,112 | 10,584 | 7,056 | - | 4,939 | 15,521 | 14,760 | 11,070 | 7,380 | - | 5,166 |
| | | W | 1,388 | 1,231 | 923 | 616 | - | 291 | 1,338 | 1,187 | 890 | 593 | - | 280 | 1,302 | 1,128 | 846 | 564 | - | 267 |
| 50 | 10.0 | Q(Btu/h) | 13,547 | 12,701 | 9,525 | 6,350 | - | 4,445 | 14,164 | 13,279 | 9,959 | 6,639 | - | 4,648 | 14,603 | 14,160 | 10,620 | 7,080 | - | 4,956 |
| | | W | 1,358 | 1,204 | 903 | 602 | - | 285 | 1,305 | 1,157 | 868 | 579 | - | 274 | 1,267 | 1,117 | 837 | 558 | - | 264 |
| 45 | 7.2 | Q(Btu/h) | 12,652 | 11,861 | 8,896 | 5,930 | - | 4,151 | 13,265 | 12,436 | 9,327 | 6,218 | - | 4,353 | 13,687 | 13,560 | 10,170 | 6,780 | - | 4,746 |
| | | W | 1,320 | 1,171 | 878 | 585 | - | 277 | 1,265 | 1,122 | 842 | 561 | - | 265 | 1,223 | 1,100 | 825 | 550 | - | 260 |
| 40 | 4.4 | Q(Btu/h) | 11,740 | 11,006 | 8,255 | 5,503 | - | 3,852 | 12,359 | 11,587 | 8,690 | 5,793 | - | 4,055 | 12,773 | 13,200 | 9,900 | 6,600 | - | 4,620 |
| | | W | 1,276 | 1,132 | 849 | 566 | - | 267 | 1,219 | 1,081 | 811 | 541 | - | 256 | 1,171 | 1,089 | 817 | 545 | - | 257 |
| 35 | 1.7 | Q(Btu/h) | 10,815 | 10,139 | 7,604 | 5,070 | - | 3,549 | 11,448 | 10,732 | 8,049 | 5,366 | - | 3,756 | 11,863 | 12,480 | 9,360 | 6,240 | - | 4,368 |
| | | W | 1,224 | 1,086 | 814 | 543 | - | 257 | 1,166 | 1,034 | 776 | 517 | - | 244 | 1,112 | 1,067 | 800 | 534 | - | 252 |
| 30 | -1.1 | Q(Btu/h) | 9,880 | 9,263 | 6,947 | 4,631 | - | 3,242 | 10,534 | 9,876 | 7,407 | 4,938 | - | 3,457 | 10,955 | 11,460 | 8,595 | 5,730 | - | 4,011 |
| | | W | 1,166 | 1,034 | 776 | 517 | - | 244 | 1,107 | 982 | 736 | 491 | - | 232 | 1,046 | 1,018 | 763 | 509 | - | 241 |
| 25 | -3.9 | Q(Btu/h) | 8,938 | 8,379 | 6,284 | 4,190 | - | 2,933 | 9,621 | 9,019 | 6,765 | 4,510 | - | 3,157 | 10,051 | 10,980 | 8,235 | 5,490 | - | 3,843 |
| | | W | 1,100 | 976 | 732 | 488 | - | 231 | 1,041 | 923 | 692 | 462 | - | 218 | 976 | 990 | 743 | 495 | - | 234 |
| 20 | -6.7 | Q(Btu/h) | 7,991 | 7,492 | 5,619 | 3,746 | - | 2,622 | 8,710 | 8,166 | 6,124 | 4,083 | - | 2,858 | 9,150 | 10,200 | 7,650 | 5,100 | - | 3,570 |
| | | W | 1,028 | 912 | 684 | 456 | - | 216 | 968 | 859 | 644 | 429 | - | 203 | 900 | 930 | 697 | 465 | - | 220 |
| 15 | -9.4 | Q(Btu/h) | 7,043 | 6,603 | 4,952 | 3,301 | - | 2,311 | 7,804 | 7,317 | 5,487 | 3,658 | - | 2,561 | 8,253 | 9,360 | 7,020 | 4,680 | - | 3,276 |
| | | W | 949 | 842 | 631 | 421 | - | 199 | 889 | 789 | 592 | 394 | - | 186 | 821 | 869 | 652 | 435 | - | 205 |
| 10 | -12.2 | Q(Btu/h) | 6,096 | 5,715 | 4,286 | 2,857 | - | 2,000 | 6,907 | 6,475 | 4,856 | 3,237 | - | 2,266 | 7,360 | 8,520 | 6,390 | 4,260 | - | 2,982 |
| | | W | 863 | 765 | 574 | 383 | - | 181 | 804 | 713 | 535 | 356 | - | 168 | 738 | 792 | 594 | 396 | - | 187 |
| 5 | -15.0 | Q(Btu/h) | 5,153 | 4,831 | 3,623 | 2,416 | - | 1,691 | 6,019 | 5,643 | 4,232 | 2,821 | - | 1,975 | 6,471 | 7,500 | 5,625 | 3,750 | - | 2,625 |
| | | W | 770 | 683 | 512 | 341 | - | 161 | 711 | 631 | 473 | 315 | - | 149 | 653 | 704 | 528 | 352 | - | 166 |
| 0 | -17.8 | Q(Btu/h) | 4,218 | 3,954 | 2,966 | 1,977 | - | 1,384 | 5,145 | 4,823 | 3,617 | 2,412 | - | 1,688 | 5,588 | 6,000 | 4,500 | 3,000 | - | 2,100 |
| | | W | 669 | 594 | 445 | 297 | - | 140 | 613 | 543 | 408 | 272 | - | 128 | 565 | 583 | 437 | 292 | - | 138 |
| -4 | -20.0 | Q(Btu/h) | 3,476 | 3,259 | 2,444 | 1,630 | - | 1,141 | 4,456 | 4,177 | 3,133 | 2,089 | - | 1,462 | 4,884 | 6,000 | 4,500 | 3,000 | - | 2,100 |
| | | W | 584 | 518 | 389 | 259 | - | 123 | 529 | 469 | 352 | 235 | - | 111 | 495 | 583 | 437 | 292 | - | 138 |

* Above data is for heating operation without any frost.

SEZ-KD12NA4R1.TH

SUZ-KA12NA2.MX

1) COOLING

Rated
Q(Btu/h): 12,000
W: 930

| Indoor W.B. Outdoor D.B. (°F) (°C) | | 71°F / 21.7°C | | | | | | | 67°F / 19.4°C | | | | | | | 63°F / 17.2°C | | | | | | |
|--|------|---------------|--------|--------|--------|-------|-----|-------|---------------|--------|--------|-------|-----|-------|--|---------------|--------|--------|-------|-----|-------|--|
| | | Max | Rated | 75% | 50% | 25% | Min | | Max | Rated | 75% | 50% | 25% | Min | | Max | Rated | 75% | 50% | 25% | Min | |
| 115 | 46.1 | Q(Btu/h) | 10,954 | 10,954 | 8,216 | 5,477 | - | 3,651 | 10,257 | 10,257 | 7,693 | 5,129 | - | 3,419 | | 9,361 | 9,361 | 7,021 | 4,680 | - | 3,120 | |
| | | W | 1,045 | 1,045 | 783 | 522 | - | 270 | 1,019 | 1,019 | 764 | 510 | - | 263 | | 977 | 977 | 733 | 488 | - | 252 | |
| 110 | 43.3 | Q(Btu/h) | 11,452 | 11,452 | 8,589 | 5,726 | - | 3,817 | 10,656 | 10,656 | 7,992 | 5,328 | - | 3,552 | | 9,759 | 9,759 | 7,320 | 4,880 | - | 3,253 | |
| | | W | 1,028 | 1,028 | 771 | 514 | - | 265 | 1,002 | 1,002 | 752 | 501 | - | 259 | | 955 | 955 | 717 | 478 | - | 247 | |
| 105 | 40.6 | Q(Btu/h) | 11,950 | 11,950 | 8,963 | 5,975 | - | 3,983 | 11,054 | 11,054 | 8,290 | 5,527 | - | 3,685 | | 10,257 | 10,257 | 7,693 | 5,129 | - | 3,419 | |
| | | W | 1,015 | 1,015 | 761 | 507 | - | 262 | 977 | 977 | 733 | 488 | - | 252 | | 934 | 934 | 701 | 467 | - | 241 | |
| 100 | 37.8 | Q(Btu/h) | 12,349 | 12,349 | 9,261 | 6,174 | - | 4,116 | 11,552 | 11,552 | 8,664 | 5,776 | - | 3,851 | | 10,656 | 10,656 | 7,992 | 5,328 | - | 3,552 | |
| | | W | 985 | 985 | 739 | 493 | - | 254 | 955 | 955 | 717 | 478 | - | 247 | | 913 | 913 | 685 | 457 | - | 236 | |
| 95 | 35.0 | Q(Btu/h) | 12,846 | 12,846 | 9,635 | 6,423 | - | 4,282 | 12,000 | 12,000 | 9,000 | 6,000 | - | 4,000 | | 11,154 | 11,154 | 8,365 | 5,577 | - | 3,718 | |
| | | W | 968 | 968 | 726 | 484 | - | 250 | 930 | 930 | 698 | 465 | - | 240 | | 892 | 892 | 669 | 446 | - | 230 | |
| 90 | 32.2 | Q(Btu/h) | 13,245 | 13,245 | 9,934 | 6,622 | - | 4,415 | 12,448 | 12,448 | 9,336 | 6,224 | - | 4,149 | | 11,552 | 11,552 | 8,664 | 5,776 | - | 3,851 | |
| | | W | 934 | 934 | 701 | 467 | - | 241 | 892 | 892 | 669 | 446 | - | 230 | | 858 | 858 | 643 | 429 | - | 221 | |
| 85 | 29.4 | Q(Btu/h) | 13,743 | 13,743 | 10,307 | 6,871 | - | 4,581 | 12,946 | 12,946 | 9,710 | 6,473 | - | 4,315 | | 12,050 | 12,050 | 9,037 | 6,025 | - | 4,017 | |
| | | W | 900 | 900 | 675 | 450 | - | 232 | 858 | 858 | 643 | 429 | - | 221 | | 828 | 828 | 621 | 414 | - | 214 | |
| 80 | 26.7 | Q(Btu/h) | 14,141 | 14,141 | 10,606 | 7,071 | - | 4,714 | 13,344 | 13,344 | 10,008 | 6,672 | - | 4,448 | | 12,548 | 12,548 | 9,411 | 6,274 | - | 4,183 | |
| | | W | 866 | 866 | 650 | 433 | - | 224 | 820 | 820 | 615 | 410 | - | 212 | | 794 | 794 | 596 | 397 | - | 205 | |
| 75 | 23.9 | Q(Btu/h) | 14,639 | 14,639 | 10,979 | 7,320 | - | 4,880 | 13,743 | 13,743 | 10,307 | 6,871 | - | 4,581 | | 12,996 | 12,996 | 9,747 | 6,498 | - | 4,332 | |
| | | W | 828 | 828 | 621 | 414 | - | 214 | 781 | 781 | 586 | 391 | - | 202 | | 764 | 764 | 573 | 382 | - | 197 | |
| 70 | 21.1 | Q(Btu/h) | 14,988 | 14,988 | 11,241 | 7,494 | - | 4,996 | 14,041 | 14,041 | 10,531 | 7,021 | - | 4,680 | | 13,444 | 13,444 | 10,083 | 6,722 | - | 4,481 | |
| | | W | 786 | 786 | 589 | 393 | - | 203 | 747 | 747 | 561 | 374 | - | 193 | | 718 | 718 | 538 | 359 | - | 185 | |
| 67 | 19.4 | Q(Btu/h) | 15,137 | 15,137 | 11,353 | 7,568 | - | 5,046 | 14,340 | 14,340 | 10,755 | 7,170 | - | 4,780 | | 13,743 | 13,743 | 10,307 | 6,871 | - | 4,581 | |
| | | W | 747 | 747 | 561 | 374 | - | 193 | 718 | 718 | 538 | 359 | - | 185 | | 679 | 679 | 510 | 340 | - | 175 | |

* It may not reach the above capacities in low ambient temperatures.

SEZ-KD12NA4R1.TH

SUZ-KA12NA2.MX

2) HEATING

Rated

Q(Btu/h): 15,000

W: 1,330

| Indoor D.B. Outdoor W.B. (°F) (°C) | | | 77°F / 25.0°C | | | | | | 68°F / 20.0°C | | | | | | 59°F / 15.0°C | | | | | |
|--|-------|----------|---------------|--------|--------|-------|-----|-------|---------------|--------|--------|-------|-----|-------|---------------|--------|--------|-------|-----|-------|
| | | | Max | Rated | 75% | 50% | 25% | Min | Max | Rated | 75% | 50% | 25% | Min | Max | Rated | 75% | 50% | 25% | Min |
| 65 | 18.3 | Q(Btu/h) | 21,143 | 18,878 | 14,158 | 9,439 | - | 6,041 | 22,038 | 19,676 | 14,757 | 9,838 | - | 6,296 | 22,788 | 19,800 | 14,850 | 9,900 | - | 6,336 |
| | | W | 1,946 | 1,532 | 1,149 | 766 | - | 299 | 1,886 | 1,485 | 1,113 | 742 | - | 290 | 1,834 | 1,390 | 1,042 | 695 | - | 272 |
| 60 | 15.6 | Q(Btu/h) | 20,053 | 17,905 | 13,429 | 8,952 | - | 5,730 | 20,907 | 18,667 | 14,000 | 9,334 | - | 5,973 | 21,578 | 19,125 | 14,344 | 9,563 | - | 6,120 |
| | | W | 1,924 | 1,514 | 1,136 | 757 | - | 296 | 1,859 | 1,463 | 1,097 | 732 | - | 286 | 1,811 | 1,377 | 1,032 | 688 | - | 269 |
| 55 | 12.8 | Q(Btu/h) | 18,931 | 16,903 | 12,677 | 8,452 | - | 5,409 | 19,757 | 17,640 | 13,230 | 8,820 | - | 5,645 | 20,371 | 18,450 | 13,838 | 9,225 | - | 5,904 |
| | | W | 1,892 | 1,489 | 1,117 | 744 | - | 291 | 1,823 | 1,435 | 1,076 | 717 | - | 280 | 1,775 | 1,363 | 1,022 | 682 | - | 267 |
| 50 | 10.0 | Q(Btu/h) | 17,781 | 15,876 | 11,907 | 7,938 | - | 5,080 | 18,591 | 16,599 | 12,449 | 8,299 | - | 5,312 | 19,166 | 17,700 | 13,275 | 8,850 | - | 5,664 |
| | | W | 1,850 | 1,456 | 1,092 | 728 | - | 285 | 1,778 | 1,399 | 1,050 | 700 | - | 274 | 1,726 | 1,350 | 1,012 | 675 | - | 264 |
| 45 | 7.2 | Q(Btu/h) | 16,605 | 14,826 | 11,120 | 7,413 | - | 4,744 | 17,411 | 15,545 | 11,659 | 7,773 | - | 4,975 | 17,964 | 16,950 | 12,713 | 8,475 | - | 5,424 |
| | | W | 1,799 | 1,416 | 1,062 | 708 | - | 277 | 1,724 | 1,357 | 1,018 | 678 | - | 265 | 1,666 | 1,330 | 998 | 665 | - | 260 |
| 40 | 4.4 | Q(Btu/h) | 15,409 | 13,758 | 10,318 | 6,879 | - | 4,403 | 16,221 | 14,483 | 10,862 | 7,242 | - | 4,635 | 16,765 | 16,500 | 12,375 | 8,250 | - | 5,280 |
| | | W | 1,738 | 1,368 | 1,026 | 684 | - | 267 | 1,661 | 1,307 | 980 | 654 | - | 256 | 1,595 | 1,317 | 988 | 658 | - | 257 |
| 35 | 1.7 | Q(Btu/h) | 14,195 | 12,674 | 9,506 | 6,337 | - | 4,056 | 15,025 | 13,415 | 10,062 | 6,708 | - | 4,293 | 15,570 | 15,600 | 11,700 | 7,800 | - | 4,992 |
| | | W | 1,668 | 1,313 | 985 | 657 | - | 257 | 1,589 | 1,251 | 938 | 625 | - | 244 | 1,515 | 1,290 | 968 | 645 | - | 252 |
| 30 | -1.1 | Q(Btu/h) | 12,968 | 11,578 | 8,684 | 5,789 | - | 3,705 | 13,826 | 12,345 | 9,259 | 6,172 | - | 3,950 | 14,378 | 14,325 | 10,744 | 7,163 | - | 4,584 |
| | | W | 1,589 | 1,250 | 938 | 625 | - | 244 | 1,508 | 1,187 | 890 | 593 | - | 232 | 1,426 | 1,230 | 923 | 615 | - | 241 |
| 25 | -3.9 | Q(Btu/h) | 11,731 | 10,474 | 7,856 | 5,237 | - | 3,352 | 12,627 | 11,274 | 8,456 | 5,637 | - | 3,608 | 13,191 | 13,725 | 10,294 | 6,863 | - | 4,392 |
| | | W | 1,500 | 1,180 | 885 | 590 | - | 231 | 1,418 | 1,116 | 837 | 558 | - | 218 | 1,330 | 1,197 | 898 | 599 | - | 234 |
| 20 | -6.7 | Q(Btu/h) | 10,488 | 9,365 | 7,023 | 4,682 | - | 2,997 | 11,432 | 10,207 | 7,655 | 5,103 | - | 3,266 | 12,009 | 12,750 | 9,563 | 6,375 | - | 4,080 |
| | | W | 1,401 | 1,103 | 827 | 551 | - | 216 | 1,320 | 1,038 | 779 | 519 | - | 203 | 1,227 | 1,124 | 843 | 562 | - | 220 |
| 15 | -9.4 | Q(Btu/h) | 9,244 | 8,253 | 6,190 | 4,127 | - | 2,641 | 10,243 | 9,146 | 6,859 | 4,573 | - | 2,927 | 10,832 | 11,700 | 8,775 | 5,850 | - | 3,744 |
| | | W | 1,293 | 1,018 | 763 | 509 | - | 199 | 1,212 | 954 | 715 | 477 | - | 186 | 1,119 | 1,051 | 788 | 525 | - | 205 |
| 10 | -12.2 | Q(Btu/h) | 8,001 | 7,144 | 5,358 | 3,572 | - | 2,286 | 9,065 | 8,094 | 6,070 | 4,047 | - | 2,590 | 9,660 | 10,650 | 7,988 | 5,325 | - | 3,408 |
| | | W | 1,176 | 925 | 694 | 463 | - | 181 | 1,095 | 862 | 646 | 431 | - | 168 | 1,006 | 958 | 718 | 479 | - | 187 |
| 5 | -15.0 | Q(Btu/h) | 6,764 | 6,039 | 4,529 | 3,019 | - | 1,932 | 7,900 | 7,054 | 5,290 | 3,527 | - | 2,257 | 8,494 | 9,375 | 7,031 | 4,688 | - | 3,000 |
| | | W | 1,049 | 825 | 619 | 413 | - | 161 | 969 | 763 | 572 | 381 | - | 149 | 889 | 851 | 638 | 426 | - | 166 |
| 0 | -17.8 | Q(Btu/h) | 5,536 | 4,943 | 3,707 | 2,471 | - | 1,582 | 6,752 | 6,029 | 4,522 | 3,014 | - | 1,929 | 7,334 | 7,500 | 5,625 | 3,750 | - | 2,400 |
| | | W | 912 | 718 | 538 | 359 | - | 140 | 835 | 657 | 493 | 328 | - | 128 | 771 | 705 | 529 | 352 | - | 138 |
| -4 | -20.0 | Q(Btu/h) | 4,563 | 4,074 | 3,055 | 2,037 | - | 1,304 | 5,848 | 5,222 | 3,916 | 2,611 | - | 1,671 | 6,411 | 7,500 | 5,625 | 3,750 | - | 2,400 |
| | | W | 796 | 627 | 470 | 313 | - | 123 | 721 | 567 | 425 | 284 | - | 111 | 674 | 705 | 529 | 352 | - | 138 |

* Above data is for heating operation without any frost.

SEZ-KD15NA4R1.TH**SUZ-KA15NA2.MX****1) COOLING****Rated**

Q(Btu/h): 15,000

W: 1,150

| Indoor W.B. Outdoor D.B. (°F) (°C) | | | 71°F / 21.7°C | | | | | | 67°F / 19.4°C | | | | | | 63°F / 17.2°C | | | | | |
|--|------|----------|---------------|--------|--------|-------|-----|-------|---------------|--------|--------|-------|-----|-------|---------------|--------|--------|-------|-----|-------|
| | | | Max | Rated | 75% | 50% | 25% | Min | Max | Rated | 75% | 50% | 25% | Min | Max | Rated | 75% | 50% | 25% | Min |
| 115 | 46.1 | Q(Btu/h) | 13,693 | 13,693 | 10,270 | 6,846 | - | 4,747 | 12,822 | 12,822 | 9,616 | 6,411 | - | 4,445 | 11,701 | 11,701 | 8,776 | 5,851 | - | 4,056 |
| | | W | 1,292 | 1,292 | 969 | 646 | - | 359 | 1,260 | 1,260 | 945 | 630 | - | 351 | 1,208 | 1,208 | 906 | 604 | - | 336 |
| 110 | 43.3 | Q(Btu/h) | 14,315 | 14,315 | 10,737 | 7,158 | - | 4,963 | 13,320 | 13,320 | 9,990 | 6,660 | - | 4,617 | 12,199 | 12,199 | 9,149 | 6,100 | - | 4,229 |
| | | W | 1,271 | 1,271 | 953 | 635 | - | 354 | 1,239 | 1,239 | 929 | 620 | - | 345 | 1,182 | 1,182 | 886 | 591 | - | 329 |
| 105 | 40.6 | Q(Btu/h) | 14,938 | 14,938 | 11,203 | 7,469 | - | 5,178 | 13,817 | 13,817 | 10,363 | 6,909 | - | 4,790 | 12,822 | 12,822 | 9,616 | 6,411 | - | 4,445 |
| | | W | 1,255 | 1,255 | 941 | 628 | - | 349 | 1,208 | 1,208 | 906 | 604 | - | 336 | 1,155 | 1,155 | 866 | 578 | - | 321 |
| 100 | 37.8 | Q(Btu/h) | 15,436 | 15,436 | 11,577 | 7,718 | - | 5,351 | 14,440 | 14,440 | 10,830 | 7,220 | - | 5,006 | 13,320 | 13,320 | 9,990 | 6,660 | - | 4,617 |
| | | W | 1,218 | 1,218 | 914 | 609 | - | 339 | 1,182 | 1,182 | 886 | 591 | - | 329 | 1,129 | 1,129 | 847 | 564 | - | 314 |
| 95 | 35.0 | Q(Btu/h) | 16,058 | 16,058 | 12,044 | 8,029 | - | 5,567 | 15,000 | 15,000 | 11,250 | 7,500 | - | 5,200 | 13,942 | 13,942 | 10,456 | 6,971 | - | 4,833 |
| | | W | 1,197 | 1,197 | 898 | 599 | - | 333 | 1,150 | 1,150 | 863 | 575 | - | 320 | 1,103 | 1,103 | 827 | 551 | - | 307 |
| 90 | 32.2 | Q(Btu/h) | 16,556 | 16,556 | 12,417 | 8,278 | - | 5,739 | 15,560 | 15,560 | 11,670 | 7,780 | - | 5,394 | 14,440 | 14,440 | 10,830 | 7,220 | - | 5,006 |
| | | W | 1,155 | 1,155 | 866 | 578 | - | 321 | 1,103 | 1,103 | 827 | 551 | - | 307 | 1,061 | 1,061 | 796 | 530 | - | 295 |
| 85 | 29.4 | Q(Btu/h) | 17,178 | 17,178 | 12,884 | 8,589 | - | 5,955 | 16,183 | 16,183 | 12,137 | 8,091 | - | 5,610 | 15,062 | 15,062 | 11,297 | 7,531 | - | 5,222 |
| | | W | 1,113 | 1,113 | 835 | 557 | - | 310 | 1,061 | 1,061 | 796 | 530 | - | 295 | 1,024 | 1,024 | 768 | 512 | - | 285 |
| 80 | 26.7 | Q(Btu/h) | 17,676 | 17,676 | 13,257 | 8,838 | - | 6,128 | 16,680 | 16,680 | 12,510 | 8,340 | - | 5,783 | 15,685 | 15,685 | 11,763 | 7,842 | - | 5,437 |
| | | W | 1,071 | 1,071 | 803 | 536 | - | 298 | 1,013 | 1,013 | 760 | 507 | - | 282 | 982 | 982 | 736 | 491 | - | 273 |
| 75 | 23.9 | Q(Btu/h) | 18,299 | 18,299 | 13,724 | 9,149 | - | 6,344 | 17,178 | 17,178 | 12,884 | 8,589 | - | 5,955 | 16,245 | 16,245 | 12,184 | 8,122 | - | 5,632 |
| | | W | 1,024 | 1,024 | 768 | 512 | - | 285 | 966 | 966 | 725 | 483 | - | 269 | 944 | 944 | 708 | 472 | - | 263 |
| 70 | 21.1 | Q(Btu/h) | 18,734 | 18,734 | 14,051 | 9,367 | - | 6,495 | 17,552 | 17,552 | 13,164 | 8,776 | - | 6,085 | 16,805 | 16,805 | 12,604 | 8,402 | - | 5,826 |
| | | W | 971 | 971 | 729 | 486 | - | 270 | 924 | 924 | 693 | 462 | - | 257 | 887 | 887 | 666 | 444 | - | 247 |
| 67 | 19.4 | Q(Btu/h) | 18,921 | 18,921 | 14,191 | 9,461 | - | 6,559 | 17,925 | 17,925 | 13,444 | 8,963 | - | 6,214 | 17,178 | 17,178 | 12,884 | 8,589 | - | 5,955 |
| | | W | 924 | 924 | 693 | 462 | - | 257 | 887 | 887 | 666 | 444 | - | 247 | 840 | 840 | 630 | 420 | - | 234 |

* It may not reach the above capacities in low ambient temperatures.

SEZ-KD15NA4R1.TH

SUZ-KA15NA2.MX

Rated

Q(Btu/h): 18,000

W: 1,440

2) HEATING

| Indoor D.B. | | | 77°F / 25.0°C | | | | | | | 68°F / 20.0°C | | | | | | | 59°F / 15.0°C | | | | | | |
|--------------|-------|----------|---------------|--------|--------|--------|-----|-------|--|---------------|--------|--------|--------|-----|-------|--|---------------|--------|--------|--------|-----|-------|--|
| Outdoor W.B. | | | Max | Rated | 75% | 50% | 25% | Min | | Max | Rated | 75% | 50% | 25% | Min | | Max | Rated | 75% | 50% | 25% | Min | |
| (°F) | (°C) | | | | | | | | | | | | | | | | | | | | | | |
| 65 | 18.3 | Q(Btu/h) | 27,184 | 22,653 | 16,990 | 11,327 | - | 6,293 | | 28,334 | 23,612 | 17,709 | 11,806 | - | 6,559 | | 29,298 | 23,760 | 17,820 | 11,880 | - | 6,600 | |
| | | W | 2,303 | 1,659 | 1,244 | 829 | - | 334 | | 2,232 | 1,607 | 1,206 | 804 | - | 324 | | 2,170 | 1,505 | 1,129 | 752 | - | 303 | |
| 60 | 15.6 | Q(Btu/h) | 25,783 | 21,486 | 16,114 | 10,743 | - | 5,968 | | 26,881 | 22,401 | 16,800 | 11,200 | - | 6,222 | | 27,743 | 22,950 | 17,213 | 11,475 | - | 6,375 | |
| | | W | 2,277 | 1,639 | 1,229 | 820 | - | 330 | | 2,200 | 1,584 | 1,188 | 792 | - | 319 | | 2,143 | 1,490 | 1,118 | 745 | - | 300 | |
| 55 | 12.8 | Q(Btu/h) | 24,340 | 20,284 | 15,213 | 10,142 | - | 5,634 | | 25,402 | 21,168 | 15,876 | 10,584 | - | 5,880 | | 26,191 | 22,140 | 16,605 | 11,070 | - | 6,150 | |
| | | W | 2,239 | 1,612 | 1,209 | 806 | - | 325 | | 2,158 | 1,553 | 1,165 | 777 | - | 313 | | 2,101 | 1,476 | 1,107 | 738 | - | 297 | |
| 50 | 10.0 | Q(Btu/h) | 22,861 | 19,051 | 14,288 | 9,525 | - | 5,292 | | 23,902 | 19,918 | 14,939 | 9,959 | - | 5,533 | | 24,642 | 21,240 | 15,930 | 10,620 | - | 5,900 | |
| | | W | 2,190 | 1,576 | 1,182 | 788 | - | 317 | | 2,104 | 1,515 | 1,136 | 758 | - | 305 | | 2,043 | 1,462 | 1,096 | 731 | - | 294 | |
| 45 | 7.2 | Q(Btu/h) | 21,350 | 17,791 | 13,344 | 8,896 | - | 4,942 | | 22,385 | 18,654 | 13,991 | 9,327 | - | 5,182 | | 23,096 | 20,340 | 15,255 | 10,170 | - | 5,650 | |
| | | W | 2,129 | 1,533 | 1,150 | 766 | - | 309 | | 2,040 | 1,469 | 1,102 | 735 | - | 296 | | 1,972 | 1,440 | 1,080 | 720 | - | 290 | |
| 40 | 4.4 | Q(Btu/h) | 19,811 | 16,509 | 12,382 | 8,255 | - | 4,586 | | 20,856 | 17,380 | 13,035 | 8,690 | - | 4,828 | | 21,555 | 19,800 | 14,850 | 9,900 | - | 5,500 | |
| | | W | 2,057 | 1,481 | 1,111 | 741 | - | 298 | | 1,966 | 1,415 | 1,062 | 708 | - | 285 | | 1,888 | 1,426 | 1,069 | 713 | - | 287 | |
| 35 | 1.7 | Q(Btu/h) | 18,251 | 15,209 | 11,407 | 7,604 | - | 4,225 | | 19,318 | 16,099 | 12,074 | 8,049 | - | 4,472 | | 20,018 | 18,720 | 14,040 | 9,360 | - | 5,200 | |
| | | W | 1,974 | 1,422 | 1,066 | 711 | - | 286 | | 1,881 | 1,354 | 1,016 | 677 | - | 273 | | 1,793 | 1,397 | 1,048 | 698 | - | 281 | |
| 30 | -1.1 | Q(Btu/h) | 16,673 | 13,894 | 10,421 | 6,947 | - | 3,859 | | 17,776 | 14,814 | 11,110 | 7,407 | - | 4,115 | | 18,486 | 17,190 | 12,893 | 8,595 | - | 4,775 | |
| | | W | 1,880 | 1,354 | 1,015 | 677 | - | 273 | | 1,785 | 1,285 | 964 | 643 | - | 259 | | 1,688 | 1,332 | 999 | 666 | - | 268 | |
| 25 | -3.9 | Q(Btu/h) | 15,083 | 12,569 | 9,427 | 6,284 | - | 3,491 | | 16,235 | 13,529 | 10,147 | 6,765 | - | 3,758 | | 16,960 | 16,470 | 12,353 | 8,235 | - | 4,575 | |
| | | W | 1,775 | 1,278 | 958 | 639 | - | 257 | | 1,679 | 1,209 | 906 | 604 | - | 243 | | 1,574 | 1,296 | 972 | 648 | - | 261 | |
| 20 | -6.7 | Q(Btu/h) | 13,485 | 11,238 | 8,428 | 5,619 | - | 3,122 | | 14,698 | 12,248 | 9,186 | 6,124 | - | 3,402 | | 15,440 | 15,300 | 11,475 | 7,650 | - | 4,250 | |
| | | W | 1,658 | 1,194 | 896 | 597 | - | 240 | | 1,562 | 1,124 | 843 | 562 | - | 226 | | 1,452 | 1,217 | 913 | 608 | - | 245 | |
| 15 | -9.4 | Q(Btu/h) | 11,885 | 9,904 | 7,428 | 4,952 | - | 2,751 | | 13,170 | 10,975 | 8,231 | 5,487 | - | 3,049 | | 13,927 | 14,040 | 10,530 | 7,020 | - | 3,900 | |
| | | W | 1,531 | 1,102 | 826 | 551 | - | 222 | | 1,434 | 1,033 | 774 | 516 | - | 208 | | 1,324 | 1,138 | 853 | 569 | - | 229 | |
| 10 | -12.2 | Q(Btu/h) | 10,287 | 8,572 | 6,429 | 4,286 | - | 2,381 | | 11,655 | 9,712 | 7,284 | 4,856 | - | 2,698 | | 12,420 | 12,780 | 9,585 | 6,390 | - | 3,550 | |
| | | W | 1,391 | 1,002 | 751 | 501 | - | 202 | | 1,296 | 933 | 700 | 467 | - | 188 | | 1,190 | 1,037 | 778 | 518 | - | 209 | |
| 5 | -15.0 | Q(Btu/h) | 8,696 | 7,247 | 5,435 | 3,623 | - | 2,013 | | 10,157 | 8,464 | 6,348 | 4,232 | - | 2,351 | | 10,921 | 11,250 | 8,438 | 5,625 | - | 3,125 | |
| | | W | 1,241 | 894 | 670 | 447 | - | 180 | | 1,147 | 826 | 620 | 413 | - | 166 | | 1,053 | 922 | 691 | 461 | - | 186 | |
| 0 | -17.8 | Q(Btu/h) | 7,117 | 5,931 | 4,448 | 2,966 | - | 1,648 | | 8,681 | 7,235 | 5,426 | 3,617 | - | 2,010 | | 9,429 | 9,000 | 6,750 | 4,500 | - | 2,500 | |
| | | W | 1,080 | 777 | 583 | 389 | - | 157 | | 988 | 711 | 533 | 356 | - | 143 | | 912 | 763 | 572 | 382 | - | 154 | |
| -4 | -20.0 | Q(Btu/h) | 5,866 | 4,889 | 3,666 | 2,444 | - | 1,358 | | 7,519 | 6,266 | 4,700 | 3,133 | - | 1,741 | | 8,242 | 9,000 | 6,750 | 4,500 | - | 2,500 | |
| | | W | 942 | 678 | 509 | 339 | - | 137 | | 853 | 614 | 461 | 307 | - | 124 | | 798 | 763 | 572 | 382 | - | 154 | |

* Above data is for heating operation without any frost.

SLZ-KF09NA.TH

SUZ-KA09NA2.MX

Rated

Q(Btu/h): 9,000

W: 670

1) COOLING

| Indoor W.B. Outdoor D.B. (°F) (°C) | | 71°F / 21.7°C | | | | | | | 67°F / 19.4°C | | | | | | | 63°F / 17.2°C | | | | | | |
|--|------|---------------|--------|--------|-------|-------|-----|-------|---------------|--------|-------|-------|-----|-------|--|---------------|--------|-------|-------|-----|-------|--|
| | | Max | Rated | 75% | 50% | 25% | Min | | Max | Rated | 75% | 50% | 25% | Min | | Max | Rated | 75% | 50% | 25% | Min | |
| 115 | 46.1 | Q(Btu/h) | 8,216 | 8,216 | 6,162 | 4,108 | - | 3,286 | 7,693 | 7,693 | 5,770 | 3,846 | - | 3,077 | | 7,021 | 7,021 | 5,266 | 3,510 | - | 2,808 | |
| | | W | 753 | 753 | 564 | 376 | - | 191 | 734 | 734 | 551 | 367 | - | 186 | | 704 | 704 | 528 | 352 | - | 179 | |
| 110 | 43.3 | Q(Btu/h) | 8,589 | 8,589 | 6,442 | 4,295 | - | 3,436 | 7,992 | 7,992 | 5,994 | 3,996 | - | 3,197 | | 7,320 | 7,320 | 5,490 | 3,660 | - | 2,928 | |
| | | W | 740 | 740 | 555 | 370 | - | 188 | 722 | 722 | 542 | 361 | - | 183 | | 688 | 688 | 516 | 344 | - | 175 | |
| 105 | 40.6 | Q(Btu/h) | 8,963 | 8,963 | 6,722 | 4,481 | - | 3,585 | 8,290 | 8,290 | 6,218 | 4,145 | - | 3,316 | | 7,693 | 7,693 | 5,770 | 3,846 | - | 3,077 | |
| | | W | 731 | 731 | 548 | 366 | - | 186 | 704 | 704 | 528 | 352 | - | 179 | | 673 | 673 | 505 | 337 | - | 171 | |
| 100 | 37.8 | Q(Btu/h) | 9,261 | 9,261 | 6,946 | 4,631 | - | 3,705 | 8,664 | 8,664 | 6,498 | 4,332 | - | 3,466 | | 7,992 | 7,992 | 5,994 | 3,996 | - | 3,197 | |
| | | W | 710 | 710 | 532 | 355 | - | 180 | 688 | 688 | 516 | 344 | - | 175 | | 658 | 658 | 493 | 329 | - | 167 | |
| 95 | 35.0 | Q(Btu/h) | 9,635 | 9,635 | 7,226 | 4,817 | - | 3,854 | 9,000 | 9,000 | 6,750 | 4,500 | - | 3,600 | | 8,365 | 8,365 | 6,274 | 4,183 | - | 3,346 | |
| | | W | 698 | 698 | 523 | 349 | - | 177 | 670 | 670 | 503 | 335 | - | 170 | | 642 | 642 | 482 | 321 | - | 163 | |
| 90 | 32.2 | Q(Btu/h) | 9,934 | 9,934 | 7,450 | 4,967 | - | 3,973 | 9,336 | 9,336 | 7,002 | 4,668 | - | 3,734 | | 8,664 | 8,664 | 6,498 | 4,332 | - | 3,466 | |
| | | W | 673 | 673 | 505 | 337 | - | 171 | 642 | 642 | 482 | 321 | - | 163 | | 618 | 618 | 463 | 309 | - | 157 | |
| 85 | 29.4 | Q(Btu/h) | 10,307 | 10,307 | 7,730 | 5,154 | - | 4,123 | 9,710 | 9,710 | 7,282 | 4,855 | - | 3,884 | | 9,037 | 9,037 | 6,778 | 4,519 | - | 3,615 | |
| | | W | 649 | 649 | 486 | 324 | - | 165 | 618 | 618 | 463 | 309 | - | 157 | | 597 | 597 | 447 | 298 | - | 151 | |
| 80 | 26.7 | Q(Btu/h) | 10,606 | 10,606 | 7,954 | 5,303 | - | 4,242 | 10,008 | 10,008 | 7,506 | 5,004 | - | 4,003 | | 9,411 | 9,411 | 7,058 | 4,705 | - | 3,764 | |
| | | W | 624 | 624 | 468 | 312 | - | 158 | 590 | 590 | 443 | 295 | - | 150 | | 572 | 572 | 429 | 286 | - | 145 | |
| 75 | 23.9 | Q(Btu/h) | 10,979 | 10,979 | 8,234 | 5,490 | - | 4,392 | 10,307 | 10,307 | 7,730 | 5,154 | - | 4,123 | | 9,747 | 9,747 | 7,310 | 4,873 | - | 3,899 | |
| | | W | 597 | 597 | 447 | 298 | - | 151 | 563 | 563 | 422 | 281 | - | 143 | | 550 | 550 | 413 | 275 | - | 140 | |
| 70 | 21.1 | Q(Btu/h) | 11,241 | 11,241 | 8,430 | 5,620 | - | 4,496 | 10,531 | 10,531 | 7,898 | 5,266 | - | 4,212 | | 10,083 | 10,083 | 7,562 | 5,041 | - | 4,033 | |
| | | W | 566 | 566 | 424 | 283 | - | 144 | 538 | 538 | 404 | 269 | - | 137 | | 517 | 517 | 388 | 259 | - | 131 | |
| 67 | 19.4 | Q(Btu/h) | 11,353 | 11,353 | 8,515 | 5,676 | - | 4,541 | 10,755 | 10,755 | 8,066 | 5,378 | - | 4,302 | | 10,307 | 10,307 | 7,730 | 5,154 | - | 4,123 | |
| | | W | 538 | 538 | 404 | 269 | - | 137 | 517 | 517 | 388 | 259 | - | 131 | | 489 | 489 | 367 | 245 | - | 124 | |

* It may not reach the above capacities in low ambient temperatures.

SLZ-KF09NA.TH
SUZ-KA09NA2.MX
2) HEATING

Rated
Q(Btu/h): 11,000
W: 810

| Indoor D.B. Outdoor W.B. (°F) (°C) | | | 77°F / 25.0°C | | | | | | 68°F / 20.0°C | | | | | | 59°F / 15.0°C | | | | | |
|--|-------|----------|---------------|--------|--------|-------|-----|-------|---------------|--------|--------|-------|-----|-------|---------------|--------|--------|-------|-----|-------|
| | | | Max | Rated | 75% | 50% | 25% | Min | Max | Rated | 75% | 50% | 25% | Min | Max | Rated | 75% | 50% | 25% | Min |
| 65 | 18.3 | Q(Btu/h) | 15,102 | 13,844 | 10,383 | 6,922 | - | 5,047 | 15,741 | 14,429 | 10,822 | 7,215 | - | 5,260 | 16,277 | 14,520 | 10,890 | 7,260 | - | 5,293 |
| | | W | 1,083 | 933 | 700 | 466 | - | 265 | 1,049 | 904 | 678 | 452 | - | 257 | 1,020 | 846 | 635 | 423 | - | 240 |
| 60 | 15.6 | Q(Btu/h) | 14,324 | 13,130 | 9,848 | 6,565 | - | 4,787 | 14,934 | 13,689 | 10,267 | 6,845 | - | 4,990 | 15,413 | 14,025 | 10,519 | 7,013 | - | 5,113 |
| | | W | 1,070 | 922 | 692 | 461 | - | 262 | 1,034 | 891 | 668 | 446 | - | 253 | 1,007 | 838 | 629 | 419 | - | 238 |
| 55 | 12.8 | Q(Btu/h) | 13,522 | 12,396 | 9,297 | 6,198 | - | 4,519 | 14,112 | 12,936 | 9,702 | 6,468 | - | 4,716 | 14,551 | 13,530 | 10,148 | 6,765 | - | 4,932 |
| | | W | 1,052 | 907 | 680 | 453 | - | 257 | 1,014 | 874 | 655 | 437 | - | 248 | 987 | 830 | 623 | 415 | - | 236 |
| 50 | 10.0 | Q(Btu/h) | 12,701 | 11,642 | 8,732 | 5,821 | - | 4,244 | 13,279 | 12,172 | 9,129 | 6,086 | - | 4,437 | 13,690 | 12,980 | 9,735 | 6,490 | - | 4,732 |
| | | W | 1,029 | 887 | 665 | 443 | - | 252 | 989 | 852 | 639 | 426 | - | 242 | 960 | 822 | 617 | 411 | - | 233 |
| 45 | 7.2 | Q(Btu/h) | 11,861 | 10,873 | 8,154 | 5,436 | - | 3,964 | 12,436 | 11,400 | 8,550 | 5,700 | - | 4,156 | 12,831 | 12,430 | 9,323 | 6,215 | - | 4,531 |
| | | W | 1,001 | 862 | 647 | 431 | - | 245 | 959 | 826 | 620 | 413 | - | 235 | 927 | 810 | 608 | 405 | - | 230 |
| 40 | 4.4 | Q(Btu/h) | 11,006 | 10,089 | 7,567 | 5,045 | - | 3,678 | 11,587 | 10,621 | 7,966 | 5,311 | - | 3,872 | 11,975 | 12,100 | 9,075 | 6,050 | - | 4,411 |
| | | W | 967 | 833 | 625 | 417 | - | 237 | 924 | 796 | 597 | 398 | - | 226 | 887 | 802 | 601 | 401 | - | 228 |
| 35 | 1.7 | Q(Btu/h) | 10,139 | 9,294 | 6,971 | 4,647 | - | 3,388 | 10,732 | 9,838 | 7,378 | 4,919 | - | 3,586 | 11,121 | 11,440 | 8,580 | 5,720 | - | 4,170 |
| | | W | 928 | 800 | 600 | 400 | - | 227 | 884 | 762 | 571 | 381 | - | 216 | 843 | 786 | 589 | 393 | - | 223 |
| 30 | -1.1 | Q(Btu/h) | 9,263 | 8,491 | 6,368 | 4,245 | - | 3,095 | 9,876 | 9,053 | 6,790 | 4,526 | - | 3,300 | 10,270 | 10,505 | 7,879 | 5,253 | - | 3,830 |
| | | W | 884 | 762 | 571 | 381 | - | 216 | 839 | 723 | 542 | 361 | - | 205 | 793 | 749 | 562 | 375 | - | 213 |
| 25 | -3.9 | Q(Btu/h) | 8,379 | 7,681 | 5,761 | 3,841 | - | 2,800 | 9,019 | 8,268 | 6,201 | 4,134 | - | 3,014 | 9,422 | 10,065 | 7,549 | 5,033 | - | 3,669 |
| | | W | 834 | 719 | 539 | 359 | - | 204 | 789 | 680 | 510 | 340 | - | 193 | 740 | 729 | 547 | 365 | - | 207 |
| 20 | -6.7 | Q(Btu/h) | 7,492 | 6,867 | 5,151 | 3,434 | - | 2,503 | 8,166 | 7,485 | 5,614 | 3,743 | - | 2,729 | 8,578 | 9,350 | 7,013 | 4,675 | - | 3,409 |
| | | W | 779 | 672 | 504 | 336 | - | 191 | 734 | 632 | 474 | 316 | - | 180 | 682 | 684 | 513 | 342 | - | 194 |
| 15 | -9.4 | Q(Btu/h) | 6,603 | 6,052 | 4,539 | 3,026 | - | 2,206 | 7,317 | 6,707 | 5,030 | 3,353 | - | 2,445 | 7,737 | 8,580 | 6,435 | 4,290 | - | 3,128 |
| | | W | 719 | 620 | 465 | 310 | - | 176 | 674 | 581 | 436 | 290 | - | 165 | 622 | 640 | 480 | 320 | - | 182 |
| 10 | -12.2 | Q(Btu/h) | 5,715 | 5,239 | 3,929 | 2,619 | - | 1,910 | 6,475 | 5,935 | 4,452 | 2,968 | - | 2,164 | 6,900 | 7,810 | 5,858 | 3,905 | - | 2,847 |
| | | W | 654 | 564 | 423 | 282 | - | 160 | 609 | 525 | 394 | 262 | - | 149 | 559 | 583 | 437 | 292 | - | 166 |
| 5 | -15.0 | Q(Btu/h) | 4,831 | 4,429 | 3,321 | 2,214 | - | 1,614 | 5,643 | 5,173 | 3,880 | 2,586 | - | 1,886 | 6,067 | 6,875 | 5,156 | 3,438 | - | 2,506 |
| | | W | 583 | 503 | 377 | 251 | - | 143 | 539 | 465 | 348 | 232 | - | 132 | 495 | 518 | 389 | 259 | - | 147 |
| 0 | -17.8 | Q(Btu/h) | 3,954 | 3,625 | 2,718 | 1,812 | - | 1,321 | 4,823 | 4,421 | 3,316 | 2,211 | - | 1,612 | 5,239 | 5,500 | 4,125 | 2,750 | - | 2,005 |
| | | W | 507 | 437 | 328 | 219 | - | 124 | 464 | 400 | 300 | 200 | - | 114 | 429 | 429 | 322 | 215 | - | 122 |
| -4 | -20.0 | Q(Btu/h) | 3,259 | 2,987 | 2,241 | 1,494 | - | 1,089 | 4,177 | 3,829 | 2,872 | 1,915 | - | 1,396 | 4,579 | 5,500 | 4,125 | 2,750 | - | 2,005 |
| | | W | 443 | 382 | 286 | 191 | - | 108 | 401 | 345 | 259 | 173 | - | 98 | 375 | 429 | 322 | 215 | - | 122 |

* Above data is for heating operation without any frost.

SLZ-KF12NA.TH

SUZ-KA12NA2.MX

Rated

Q(Btu/h): 12,000

W: 900

1) COOLING

| Indoor W.B. Outdoor D.B. (°F) (°C) | | | 71°F / 21.7°C | | | | | | 67°F / 19.4°C | | | | | | 63°F / 17.2°C | | | | | |
|--|------|----------|---------------|--------|--------|-------|-----|-------|---------------|--------|--------|-------|-----|-------|---------------|--------|--------|-------|-----|-------|
| | | | Max | Rated | 75% | 50% | 25% | Min | Max | Rated | 75% | 50% | 25% | Min | Max | Rated | 75% | 50% | 25% | Min |
| 115 | 46.1 | Q(Btu/h) | 10,954 | 10,954 | 8,216 | 5,477 | - | 3,560 | 10,257 | 10,257 | 7,693 | 5,129 | - | 3,334 | 9,361 | 9,361 | 7,021 | 4,680 | - | 3,042 |
| | | W | 1,011 | 1,011 | 758 | 505 | - | 270 | 986 | 986 | 740 | 493 | - | 263 | 945 | 945 | 709 | 473 | - | 252 |
| 110 | 43.3 | Q(Btu/h) | 11,452 | 11,452 | 8,589 | 5,726 | - | 3,722 | 10,656 | 10,656 | 7,992 | 5,328 | - | 3,463 | 9,759 | 9,759 | 7,320 | 4,880 | - | 3,172 |
| | | W | 995 | 995 | 746 | 497 | - | 265 | 970 | 970 | 727 | 485 | - | 259 | 925 | 925 | 693 | 462 | - | 247 |
| 105 | 40.6 | Q(Btu/h) | 11,950 | 11,950 | 8,963 | 5,975 | - | 3,884 | 11,054 | 11,054 | 8,290 | 5,527 | - | 3,593 | 10,257 | 10,257 | 7,693 | 5,129 | - | 3,334 |
| | | W | 982 | 982 | 737 | 491 | - | 262 | 945 | 945 | 709 | 473 | - | 252 | 904 | 904 | 678 | 452 | - | 241 |
| 100 | 37.8 | Q(Btu/h) | 12,349 | 12,349 | 9,261 | 6,174 | - | 4,013 | 11,552 | 11,552 | 8,664 | 5,776 | - | 3,754 | 10,656 | 10,656 | 7,992 | 5,328 | - | 3,463 |
| | | W | 953 | 953 | 715 | 477 | - | 254 | 925 | 925 | 693 | 462 | - | 247 | 884 | 884 | 663 | 442 | - | 236 |
| 95 | 35.0 | Q(Btu/h) | 12,846 | 12,846 | 9,635 | 6,423 | - | 4,175 | 12,000 | 12,000 | 9,000 | 6,000 | - | 3,900 | 11,154 | 11,154 | 8,365 | 5,577 | - | 3,625 |
| | | W | 937 | 937 | 703 | 468 | - | 250 | 900 | 900 | 675 | 450 | - | 240 | 863 | 863 | 647 | 432 | - | 230 |
| 90 | 32.2 | Q(Btu/h) | 13,245 | 13,245 | 9,934 | 6,622 | - | 4,305 | 12,448 | 12,448 | 9,336 | 6,224 | - | 4,046 | 11,552 | 11,552 | 8,664 | 5,776 | - | 3,754 |
| | | W | 904 | 904 | 678 | 452 | - | 241 | 863 | 863 | 647 | 432 | - | 230 | 830 | 830 | 623 | 415 | - | 221 |
| 85 | 29.4 | Q(Btu/h) | 13,743 | 13,743 | 10,307 | 6,871 | - | 4,466 | 12,946 | 12,946 | 9,710 | 6,473 | - | 4,207 | 12,050 | 12,050 | 9,037 | 6,025 | - | 3,916 |
| | | W | 871 | 871 | 653 | 436 | - | 232 | 830 | 830 | 623 | 415 | - | 221 | 801 | 801 | 601 | 401 | - | 214 |
| 80 | 26.7 | Q(Btu/h) | 14,141 | 14,141 | 10,606 | 7,071 | - | 4,596 | 13,344 | 13,344 | 10,008 | 6,672 | - | 4,337 | 12,548 | 12,548 | 9,411 | 6,274 | - | 4,078 |
| | | W | 838 | 838 | 629 | 419 | - | 224 | 793 | 793 | 595 | 397 | - | 212 | 768 | 768 | 576 | 384 | - | 205 |
| 75 | 23.9 | Q(Btu/h) | 14,639 | 14,639 | 10,979 | 7,320 | - | 4,758 | 13,743 | 13,743 | 10,307 | 6,871 | - | 4,466 | 12,996 | 12,996 | 9,747 | 6,498 | - | 4,224 |
| | | W | 801 | 801 | 601 | 401 | - | 214 | 756 | 756 | 567 | 378 | - | 202 | 739 | 739 | 554 | 369 | - | 197 |
| 70 | 21.1 | Q(Btu/h) | 14,988 | 14,988 | 11,241 | 7,494 | - | 4,871 | 14,041 | 14,041 | 10,531 | 7,021 | - | 4,563 | 13,444 | 13,444 | 10,083 | 6,722 | - | 4,369 |
| | | W | 760 | 760 | 570 | 380 | - | 203 | 723 | 723 | 542 | 362 | - | 193 | 695 | 695 | 521 | 347 | - | 185 |
| 67 | 19.4 | Q(Btu/h) | 15,137 | 15,137 | 11,353 | 7,568 | - | 4,920 | 14,340 | 14,340 | 10,755 | 7,170 | - | 4,661 | 13,743 | 13,743 | 10,307 | 6,871 | - | 4,466 |
| | | W | 723 | 723 | 542 | 362 | - | 193 | 695 | 695 | 521 | 347 | - | 185 | 658 | 658 | 493 | 329 | - | 175 |

* It may not reach the above capacities in low ambient temperatures.

SLZ-KF12NA.TH
SUZ-KA12NA2.MX
2) HEATING

Rated
Q(Btu/h): 13,000
W: 1,310

| Indoor D.B. Outdoor W.B. (°F) (°C) | | | 77°F / 25.0°C | | | | | | 68°F / 20.0°C | | | | | | 59°F / 15.0°C | | | | | |
|--|-------|----------|---------------|--------|--------|-------|-----|-------|---------------|--------|--------|-------|-----|-------|---------------|--------|--------|-------|-----|-------|
| | | | Max | Rated | 75% | 50% | 25% | Min | Max | Rated | 75% | 50% | 25% | Min | Max | Rated | 75% | 50% | 25% | Min |
| 65 | 18.3 | Q(Btu/h) | 16,361 | 16,361 | 12,270 | 8,180 | - | 6,041 | 17,053 | 17,053 | 12,790 | 8,526 | - | 6,296 | 17,633 | 17,160 | 12,870 | 8,580 | - | 6,336 |
| | | W | 1,509 | 1,509 | 1,132 | 754 | - | 311 | 1,462 | 1,462 | 1,097 | 731 | - | 301 | 1,421 | 1,369 | 1,027 | 684 | - | 282 |
| 60 | 15.6 | Q(Btu/h) | 15,518 | 15,518 | 11,638 | 7,759 | - | 5,730 | 16,178 | 16,178 | 12,134 | 8,089 | - | 5,973 | 16,697 | 16,575 | 12,431 | 8,288 | - | 6,120 |
| | | W | 1,491 | 1,491 | 1,118 | 746 | - | 307 | 1,441 | 1,441 | 1,081 | 721 | - | 297 | 1,404 | 1,356 | 1,017 | 678 | - | 279 |
| 55 | 12.8 | Q(Btu/h) | 14,649 | 14,649 | 10,987 | 7,325 | - | 5,409 | 15,288 | 15,288 | 11,466 | 7,644 | - | 5,645 | 15,763 | 15,990 | 11,993 | 7,995 | - | 5,904 |
| | | W | 1,466 | 1,466 | 1,100 | 733 | - | 302 | 1,413 | 1,413 | 1,060 | 707 | - | 291 | 1,376 | 1,343 | 1,007 | 671 | - | 277 |
| 50 | 10.0 | Q(Btu/h) | 13,759 | 13,759 | 10,319 | 6,879 | - | 5,080 | 14,386 | 14,386 | 10,789 | 7,193 | - | 5,312 | 14,831 | 15,340 | 11,505 | 7,670 | - | 5,664 |
| | | W | 1,434 | 1,434 | 1,076 | 717 | - | 296 | 1,378 | 1,378 | 1,034 | 689 | - | 284 | 1,338 | 1,330 | 997 | 665 | - | 274 |
| 45 | 7.2 | Q(Btu/h) | 12,849 | 12,849 | 9,637 | 6,425 | - | 4,744 | 13,473 | 13,473 | 10,105 | 6,736 | - | 4,975 | 13,901 | 14,690 | 11,018 | 7,345 | - | 5,424 |
| | | W | 1,395 | 1,395 | 1,046 | 697 | - | 287 | 1,336 | 1,336 | 1,002 | 668 | - | 275 | 1,292 | 1,310 | 983 | 655 | - | 270 |
| 40 | 4.4 | Q(Btu/h) | 11,923 | 11,923 | 8,943 | 5,962 | - | 4,403 | 12,552 | 12,552 | 9,414 | 6,276 | - | 4,635 | 12,973 | 14,300 | 10,725 | 7,150 | - | 5,280 |
| | | W | 1,348 | 1,348 | 1,011 | 674 | - | 278 | 1,288 | 1,288 | 966 | 644 | - | 265 | 1,237 | 1,297 | 973 | 648 | - | 267 |
| 35 | 1.7 | Q(Btu/h) | 10,984 | 10,984 | 8,238 | 5,492 | - | 4,056 | 11,627 | 11,627 | 8,720 | 5,813 | - | 4,293 | 12,048 | 13,520 | 10,140 | 6,760 | - | 4,992 |
| | | W | 1,293 | 1,293 | 970 | 647 | - | 267 | 1,232 | 1,232 | 924 | 616 | - | 254 | 1,174 | 1,271 | 953 | 635 | - | 262 |
| 30 | -1.1 | Q(Btu/h) | 10,035 | 10,035 | 7,526 | 5,017 | - | 3,705 | 10,699 | 10,699 | 8,024 | 5,349 | - | 3,950 | 11,126 | 12,415 | 9,311 | 6,208 | - | 4,584 |
| | | W | 1,232 | 1,232 | 924 | 616 | - | 254 | 1,169 | 1,169 | 877 | 585 | - | 241 | 1,106 | 1,212 | 909 | 606 | - | 250 |
| 25 | -3.9 | Q(Btu/h) | 9,078 | 9,078 | 6,808 | 4,539 | - | 3,352 | 9,771 | 9,771 | 7,328 | 4,886 | - | 3,608 | 10,208 | 11,895 | 8,921 | 5,948 | - | 4,392 |
| | | W | 1,163 | 1,163 | 872 | 581 | - | 240 | 1,099 | 1,099 | 825 | 550 | - | 227 | 1,031 | 1,179 | 884 | 590 | - | 243 |
| 20 | -6.7 | Q(Btu/h) | 8,116 | 8,116 | 6,087 | 4,058 | - | 2,997 | 8,846 | 8,846 | 6,635 | 4,423 | - | 3,266 | 9,293 | 11,050 | 8,288 | 5,525 | - | 4,080 |
| | | W | 1,086 | 1,086 | 815 | 543 | - | 224 | 1,023 | 1,023 | 767 | 511 | - | 211 | 951 | 1,107 | 830 | 553 | - | 228 |
| 15 | -9.4 | Q(Btu/h) | 7,153 | 7,153 | 5,365 | 3,576 | - | 2,641 | 7,926 | 7,926 | 5,945 | 3,963 | - | 2,927 | 8,382 | 10,140 | 7,605 | 5,070 | - | 3,744 |
| | | W | 1,002 | 1,002 | 752 | 501 | - | 207 | 939 | 939 | 705 | 470 | - | 194 | 867 | 1,035 | 776 | 517 | - | 213 |
| 10 | -12.2 | Q(Btu/h) | 6,191 | 6,191 | 4,643 | 3,096 | - | 2,286 | 7,015 | 7,015 | 5,261 | 3,507 | - | 2,590 | 7,475 | 9,230 | 6,923 | 4,615 | - | 3,408 |
| | | W | 911 | 911 | 684 | 456 | - | 188 | 849 | 849 | 637 | 424 | - | 175 | 780 | 943 | 707 | 472 | - | 194 |
| 5 | -15.0 | Q(Btu/h) | 5,234 | 5,234 | 3,925 | 2,617 | - | 1,932 | 6,113 | 6,113 | 4,585 | 3,057 | - | 2,257 | 6,573 | 8,125 | 6,094 | 4,063 | - | 3,000 |
| | | W | 813 | 813 | 610 | 406 | - | 168 | 751 | 751 | 564 | 376 | - | 155 | 689 | 838 | 629 | 419 | - | 173 |
| 0 | -17.8 | Q(Btu/h) | 4,284 | 4,284 | 3,213 | 2,142 | - | 1,582 | 5,225 | 5,225 | 3,919 | 2,612 | - | 1,929 | 5,675 | 6,500 | 4,875 | 3,250 | - | 2,400 |
| | | W | 707 | 707 | 530 | 354 | - | 146 | 647 | 647 | 485 | 324 | - | 133 | 597 | 694 | 521 | 347 | - | 143 |
| -4 | -20.0 | Q(Btu/h) | 3,531 | 3,531 | 2,648 | 1,765 | - | 1,304 | 4,526 | 4,526 | 3,394 | 2,263 | - | 1,671 | 4,961 | 6,500 | 4,875 | 3,250 | - | 2,400 |
| | | W | 617 | 617 | 463 | 309 | - | 127 | 559 | 559 | 419 | 279 | - | 115 | 523 | 694 | 521 | 347 | - | 143 |

* Above data is for heating operation without any frost.

SLZ-KF15NA.TH
SUZ-KA15NA2.MX
1) COOLING

Rated
Q(Btu/h): 14,100
W: 1,150

| Indoor W.B. Outdoor D.B. (°F) (°C) | | | 71°F / 21.7°C | | | | | | 67°F / 19.4°C | | | | | | 63°F / 17.2°C | | | | | |
|--|------|----------|---------------|--------|--------|-------|-----|-------|---------------|--------|--------|-------|-----|-------|---------------|--------|--------|-------|-----|-------|
| | | | Max | Rated | 75% | 50% | 25% | Min | Max | Rated | 75% | 50% | 25% | Min | Max | Rated | 75% | 50% | 25% | Min |
| 115 | 46.1 | Q(Btu/h) | 12,871 | 12,871 | 9,654 | 6,436 | - | 4,656 | 12,052 | 12,052 | 9,039 | 6,026 | - | 4,359 | 10,999 | 10,999 | 8,249 | 5,500 | - | 3,978 |
| | | W | 1,292 | 1,292 | 969 | 646 | - | 303 | 1,260 | 1,260 | 945 | 630 | - | 296 | 1,208 | 1,208 | 906 | 604 | - | 284 |
| 110 | 43.3 | Q(Btu/h) | 13,456 | 13,456 | 10,092 | 6,728 | - | 4,867 | 12,520 | 12,520 | 9,390 | 6,260 | - | 4,529 | 11,467 | 11,467 | 8,600 | 5,734 | - | 4,148 |
| | | W | 1,271 | 1,271 | 953 | 635 | - | 298 | 1,239 | 1,239 | 929 | 620 | - | 291 | 1,182 | 1,182 | 886 | 591 | - | 277 |
| 105 | 40.6 | Q(Btu/h) | 14,041 | 14,041 | 10,531 | 7,021 | - | 5,079 | 12,988 | 12,988 | 9,741 | 6,494 | - | 4,698 | 12,052 | 12,052 | 9,039 | 6,026 | - | 4,359 |
| | | W | 1,255 | 1,255 | 941 | 628 | - | 295 | 1,208 | 1,208 | 906 | 604 | - | 284 | 1,155 | 1,155 | 866 | 578 | - | 271 |
| 100 | 37.8 | Q(Btu/h) | 14,510 | 14,510 | 10,882 | 7,255 | - | 5,248 | 13,573 | 13,573 | 10,180 | 6,787 | - | 4,910 | 12,520 | 12,520 | 9,390 | 6,260 | - | 4,529 |
| | | W | 1,218 | 1,218 | 914 | 609 | - | 286 | 1,182 | 1,182 | 886 | 591 | - | 277 | 1,129 | 1,129 | 847 | 564 | - | 265 |
| 95 | 35.0 | Q(Btu/h) | 15,095 | 15,095 | 11,321 | 7,547 | - | 5,460 | 14,100 | 14,100 | 10,575 | 7,050 | - | 5,100 | 13,105 | 13,105 | 9,829 | 6,553 | - | 4,740 |
| | | W | 1,197 | 1,197 | 898 | 599 | - | 281 | 1,150 | 1,150 | 863 | 575 | - | 270 | 1,103 | 1,103 | 827 | 551 | - | 259 |
| 90 | 32.2 | Q(Btu/h) | 15,563 | 15,563 | 11,672 | 7,781 | - | 5,629 | 14,627 | 14,627 | 10,970 | 7,313 | - | 5,290 | 13,573 | 13,573 | 10,180 | 6,787 | - | 4,910 |
| | | W | 1,155 | 1,155 | 866 | 578 | - | 271 | 1,103 | 1,103 | 827 | 551 | - | 259 | 1,061 | 1,061 | 796 | 530 | - | 249 |
| 85 | 29.4 | Q(Btu/h) | 16,148 | 16,148 | 12,111 | 8,074 | - | 5,841 | 15,212 | 15,212 | 11,409 | 7,606 | - | 5,502 | 14,159 | 14,159 | 10,619 | 7,079 | - | 5,121 |
| | | W | 1,113 | 1,113 | 835 | 557 | - | 261 | 1,061 | 1,061 | 796 | 530 | - | 249 | 1,024 | 1,024 | 768 | 512 | - | 240 |
| 80 | 26.7 | Q(Btu/h) | 16,616 | 16,616 | 12,462 | 8,308 | - | 6,010 | 15,680 | 15,680 | 11,760 | 7,840 | - | 5,671 | 14,744 | 14,744 | 11,058 | 7,372 | - | 5,333 |
| | | W | 1,071 | 1,071 | 803 | 536 | - | 252 | 1,013 | 1,013 | 760 | 507 | - | 238 | 982 | 982 | 736 | 491 | - | 231 |
| 75 | 23.9 | Q(Btu/h) | 17,201 | 17,201 | 12,901 | 8,600 | - | 6,222 | 16,148 | 16,148 | 12,111 | 8,074 | - | 5,841 | 15,270 | 15,270 | 11,453 | 7,635 | - | 5,523 |
| | | W | 1,024 | 1,024 | 768 | 512 | - | 240 | 966 | 966 | 725 | 483 | - | 227 | 944 | 944 | 708 | 472 | - | 222 |
| 70 | 21.1 | Q(Btu/h) | 17,610 | 17,610 | 13,208 | 8,805 | - | 6,370 | 16,499 | 16,499 | 12,374 | 8,249 | - | 5,968 | 15,797 | 15,797 | 11,848 | 7,898 | - | 5,714 |
| | | W | 971 | 971 | 729 | 486 | - | 228 | 924 | 924 | 693 | 462 | - | 217 | 887 | 887 | 666 | 444 | - | 208 |
| 67 | 19.4 | Q(Btu/h) | 17,786 | 17,786 | 13,339 | 8,893 | - | 6,433 | 16,850 | 16,850 | 12,637 | 8,425 | - | 6,095 | 16,148 | 16,148 | 12,111 | 8,074 | - | 5,841 |
| | | W | 924 | 924 | 693 | 462 | - | 217 | 887 | 887 | 666 | 444 | - | 208 | 840 | 840 | 630 | 420 | - | 197 |

* It may not reach the above capacities in low ambient temperatures.

SLZ-KF15NA.TH
SUZ-KA15NA2.MX
2) HEATING

Rated
Q(Btu/h): 18,000
W: 1,730

| Indoor D.B. Outdoor W.B. (°F) (°C) | | | 77°F / 25.0°C | | | | | | 68°F / 20.0°C | | | | | | 59°F / 15.0°C | | | | | |
|--|-------|----------|---------------|--------|--------|--------|-----|-------|---------------|--------|--------|--------|-----|-------|---------------|--------|--------|--------|-----|-------|
| | | | Max | Rated | 75% | 50% | 25% | Min | Max | Rated | 75% | 50% | 25% | Min | Max | Rated | 75% | 50% | 25% | Min |
| 65 | 18.3 | Q(Btu/h) | 24,038 | 22,653 | 16,990 | 11,327 | - | 6,418 | 25,055 | 23,612 | 17,709 | 11,806 | - | 6,690 | 25,907 | 23,760 | 17,820 | 11,880 | - | 6,732 |
| | | W | 2,280 | 1,993 | 1,494 | 996 | - | 322 | 2,210 | 1,931 | 1,448 | 966 | - | 313 | 2,148 | 1,808 | 1,356 | 904 | - | 293 |
| 60 | 15.6 | Q(Btu/h) | 22,799 | 21,486 | 16,114 | 10,743 | - | 6,088 | 23,770 | 22,401 | 16,800 | 11,200 | - | 6,347 | 24,532 | 22,950 | 17,213 | 11,475 | - | 6,503 |
| | | W | 2,254 | 1,969 | 1,477 | 985 | - | 319 | 2,178 | 1,903 | 1,427 | 952 | - | 308 | 2,122 | 1,791 | 1,343 | 895 | - | 290 |
| 55 | 12.8 | Q(Btu/h) | 21,523 | 20,284 | 15,213 | 10,142 | - | 5,747 | 22,462 | 21,168 | 15,876 | 10,584 | - | 5,998 | 23,160 | 22,140 | 16,605 | 11,070 | - | 6,273 |
| | | W | 2,216 | 1,937 | 1,452 | 968 | - | 313 | 2,136 | 1,866 | 1,400 | 933 | - | 302 | 2,080 | 1,773 | 1,330 | 887 | - | 287 |
| 50 | 10.0 | Q(Btu/h) | 20,215 | 19,051 | 14,288 | 9,525 | - | 5,398 | 21,136 | 19,918 | 14,939 | 9,959 | - | 5,644 | 21,790 | 21,240 | 15,930 | 10,620 | - | 6,018 |
| | | W | 2,168 | 1,894 | 1,420 | 947 | - | 307 | 2,083 | 1,820 | 1,365 | 910 | - | 295 | 2,023 | 1,756 | 1,317 | 878 | - | 284 |
| 45 | 7.2 | Q(Btu/h) | 18,879 | 17,791 | 13,344 | 8,896 | - | 5,041 | 19,794 | 18,654 | 13,991 | 9,327 | - | 5,285 | 20,423 | 20,340 | 15,255 | 10,170 | - | 5,763 |
| | | W | 2,108 | 1,842 | 1,381 | 921 | - | 298 | 2,020 | 1,765 | 1,324 | 882 | - | 286 | 1,952 | 1,730 | 1,298 | 865 | - | 280 |
| 40 | 4.4 | Q(Btu/h) | 17,518 | 16,509 | 12,382 | 8,255 | - | 4,678 | 18,442 | 17,380 | 13,035 | 8,690 | - | 4,924 | 19,060 | 19,800 | 14,850 | 9,900 | - | 5,610 |
| | | W | 2,037 | 1,780 | 1,335 | 890 | - | 288 | 1,946 | 1,700 | 1,275 | 850 | - | 275 | 1,869 | 1,713 | 1,285 | 856 | - | 277 |
| 35 | 1.7 | Q(Btu/h) | 16,138 | 15,209 | 11,407 | 7,604 | - | 4,309 | 17,082 | 16,099 | 12,074 | 8,049 | - | 4,561 | 17,701 | 18,720 | 14,040 | 9,360 | - | 5,304 |
| | | W | 1,955 | 1,708 | 1,281 | 854 | - | 276 | 1,862 | 1,627 | 1,220 | 813 | - | 263 | 1,775 | 1,678 | 1,259 | 839 | - | 272 |
| 30 | -1.1 | Q(Btu/h) | 14,743 | 13,894 | 10,421 | 6,947 | - | 3,937 | 15,719 | 14,814 | 11,110 | 7,407 | - | 4,197 | 16,347 | 17,190 | 12,893 | 8,595 | - | 4,871 |
| | | W | 1,862 | 1,626 | 1,220 | 813 | - | 263 | 1,767 | 1,544 | 1,158 | 772 | - | 250 | 1,671 | 1,600 | 1,200 | 800 | - | 259 |
| 25 | -3.9 | Q(Btu/h) | 13,337 | 12,569 | 9,427 | 6,284 | - | 3,561 | 14,356 | 13,529 | 10,147 | 6,765 | - | 3,833 | 14,997 | 16,470 | 12,353 | 8,235 | - | 4,667 |
| | | W | 1,757 | 1,535 | 1,152 | 768 | - | 248 | 1,662 | 1,452 | 1,089 | 726 | - | 235 | 1,558 | 1,557 | 1,168 | 779 | - | 252 |
| 20 | -6.7 | Q(Btu/h) | 11,924 | 11,238 | 8,428 | 5,619 | - | 3,184 | 12,997 | 12,248 | 9,186 | 6,124 | - | 3,470 | 13,653 | 15,300 | 11,475 | 7,650 | - | 4,335 |
| | | W | 1,642 | 1,434 | 1,076 | 717 | - | 232 | 1,546 | 1,351 | 1,013 | 675 | - | 219 | 1,438 | 1,462 | 1,096 | 731 | - | 237 |
| 15 | -9.4 | Q(Btu/h) | 10,509 | 9,904 | 7,428 | 4,952 | - | 2,806 | 11,646 | 10,975 | 8,231 | 5,487 | - | 3,110 | 12,315 | 14,040 | 10,530 | 7,020 | - | 3,978 |
| | | W | 1,515 | 1,324 | 993 | 662 | - | 214 | 1,420 | 1,241 | 930 | 620 | - | 201 | 1,311 | 1,367 | 1,025 | 683 | - | 221 |
| 10 | -12.2 | Q(Btu/h) | 9,096 | 8,572 | 6,429 | 4,286 | - | 2,429 | 10,306 | 9,712 | 7,284 | 4,856 | - | 2,752 | 10,982 | 12,780 | 9,585 | 6,390 | - | 3,621 |
| | | W | 1,378 | 1,204 | 903 | 602 | - | 195 | 1,283 | 1,121 | 841 | 561 | - | 181 | 1,178 | 1,246 | 934 | 623 | - | 202 |
| 5 | -15.0 | Q(Btu/h) | 7,690 | 7,247 | 5,435 | 3,623 | - | 2,053 | 8,982 | 8,464 | 6,348 | 4,232 | - | 2,398 | 9,657 | 11,250 | 8,438 | 5,625 | - | 3,188 |
| | | W | 1,229 | 1,074 | 805 | 537 | - | 174 | 1,136 | 992 | 744 | 496 | - | 161 | 1,042 | 1,107 | 830 | 554 | - | 179 |
| 0 | -17.8 | Q(Btu/h) | 6,294 | 5,931 | 4,448 | 2,966 | - | 1,680 | 7,677 | 7,235 | 5,426 | 3,617 | - | 2,050 | 8,338 | 9,000 | 6,750 | 4,500 | - | 2,550 |
| | | W | 1,069 | 934 | 700 | 467 | - | 151 | 978 | 855 | 641 | 427 | - | 138 | 903 | 917 | 688 | 458 | - | 148 |
| -4 | -20.0 | Q(Btu/h) | 5,187 | 4,889 | 3,666 | 2,444 | - | 1,385 | 6,649 | 6,266 | 4,700 | 3,133 | - | 1,775 | 7,288 | 9,000 | 6,750 | 4,500 | - | 2,550 |
| | | W | 933 | 815 | 611 | 408 | - | 132 | 844 | 738 | 553 | 369 | - | 119 | 790 | 917 | 688 | 458 | - | 148 |

* Above data is for heating operation without any frost.

PEAD-A09AA7.MX

SUZ-KA09NA2.MX

Rated

Q(Btu/h): 9,000

W: 720

1) COOLING

| Indoor W.B. | | | 71°F / 21.7°C | | | | | | | 67°F / 19.4°C | | | | | | | 63°F / 17.2°C | | | | | | |
|--------------|------|----------|---------------|--------|-------|-------|-----|-------|--|---------------|--------|-------|-------|-----|-------|--|---------------|--------|-------|-------|-----|-------|--|
| Outdoor D.B. | | | Max | Rated | 75% | 50% | 25% | Min | | Max | Rated | 75% | 50% | 25% | Min | | Max | Rated | 75% | 50% | 25% | Min | |
| (°F) | (°C) | | | | | | | | | | | | | | | | | | | | | | |
| 115 | 46.1 | Q(Btu/h) | 8,216 | 8,216 | 6,162 | 4,108 | - | 3,925 | | 7,693 | 7,693 | 5,770 | 3,846 | - | 3,676 | | 7,021 | 7,021 | 5,266 | 3,510 | - | 3,354 | |
| | | W | 809 | 809 | 607 | 404 | - | 270 | | 789 | 789 | 592 | 395 | - | 263 | | 756 | 756 | 567 | 378 | - | 252 | |
| 110 | 43.3 | Q(Btu/h) | 8,589 | 8,589 | 6,442 | 4,295 | - | 4,104 | | 7,992 | 7,992 | 5,994 | 3,996 | - | 3,818 | | 7,320 | 7,320 | 5,490 | 3,660 | - | 3,497 | |
| | | W | 796 | 796 | 597 | 398 | - | 265 | | 776 | 776 | 582 | 388 | - | 259 | | 740 | 740 | 555 | 370 | - | 247 | |
| 105 | 40.6 | Q(Btu/h) | 8,963 | 8,963 | 6,722 | 4,481 | - | 4,282 | | 8,290 | 8,290 | 6,218 | 4,145 | - | 3,961 | | 7,693 | 7,693 | 5,770 | 3,846 | - | 3,676 | |
| | | W | 786 | 786 | 589 | 393 | - | 262 | | 756 | 756 | 567 | 378 | - | 252 | | 723 | 723 | 542 | 362 | - | 241 | |
| 100 | 37.8 | Q(Btu/h) | 9,261 | 9,261 | 6,946 | 4,631 | - | 4,425 | | 8,664 | 8,664 | 6,498 | 4,332 | - | 4,139 | | 7,992 | 7,992 | 5,994 | 3,996 | - | 3,818 | |
| | | W | 763 | 763 | 572 | 381 | - | 254 | | 740 | 740 | 555 | 370 | - | 247 | | 707 | 707 | 530 | 353 | - | 236 | |
| 95 | 35.0 | Q(Btu/h) | 9,635 | 9,635 | 7,226 | 4,817 | - | 4,603 | | 9,000 | 9,000 | 6,750 | 4,500 | - | 4,300 | | 8,365 | 8,365 | 6,274 | 4,183 | - | 3,997 | |
| | | W | 750 | 750 | 562 | 375 | - | 250 | | 720 | 720 | 540 | 360 | - | 240 | | 690 | 690 | 518 | 345 | - | 230 | |
| 90 | 32.2 | Q(Btu/h) | 9,934 | 9,934 | 7,450 | 4,967 | - | 4,746 | | 9,336 | 9,336 | 7,002 | 4,668 | - | 4,461 | | 8,664 | 8,664 | 6,498 | 4,332 | - | 4,139 | |
| | | W | 723 | 723 | 542 | 362 | - | 241 | | 690 | 690 | 518 | 345 | - | 230 | | 664 | 664 | 498 | 332 | - | 221 | |
| 85 | 29.4 | Q(Btu/h) | 10,307 | 10,307 | 7,730 | 5,154 | - | 4,924 | | 9,710 | 9,710 | 7,282 | 4,855 | - | 4,639 | | 9,037 | 9,037 | 6,778 | 4,519 | - | 4,318 | |
| | | W | 697 | 697 | 523 | 348 | - | 232 | | 664 | 664 | 498 | 332 | - | 221 | | 641 | 641 | 481 | 321 | - | 214 | |
| 80 | 26.7 | Q(Btu/h) | 10,606 | 10,606 | 7,954 | 5,303 | - | 5,067 | | 10,008 | 10,008 | 7,506 | 5,004 | - | 4,782 | | 9,411 | 9,411 | 7,058 | 4,705 | - | 4,496 | |
| | | W | 671 | 671 | 503 | 335 | - | 224 | | 635 | 635 | 476 | 317 | - | 212 | | 615 | 615 | 461 | 307 | - | 205 | |
| 75 | 23.9 | Q(Btu/h) | 10,979 | 10,979 | 8,234 | 5,490 | - | 5,246 | | 10,307 | 10,307 | 7,730 | 5,154 | - | 4,924 | | 9,747 | 9,747 | 7,310 | 4,873 | - | 4,657 | |
| | | W | 641 | 641 | 481 | 321 | - | 214 | | 605 | 605 | 454 | 302 | - | 202 | | 591 | 591 | 443 | 296 | - | 197 | |
| 70 | 21.1 | Q(Btu/h) | 11,241 | 11,241 | 8,430 | 5,620 | - | 5,371 | | 10,531 | 10,531 | 7,898 | 5,266 | - | 5,032 | | 10,083 | 10,083 | 7,562 | 5,041 | - | 4,817 | |
| | | W | 608 | 608 | 456 | 304 | - | 203 | | 579 | 579 | 434 | 289 | - | 193 | | 556 | 556 | 417 | 278 | - | 185 | |
| 67 | 19.4 | Q(Btu/h) | 11,353 | 11,353 | 8,515 | 5,676 | - | 5,424 | | 10,755 | 10,755 | 8,066 | 5,378 | - | 5,139 | | 10,307 | 10,307 | 7,730 | 5,154 | - | 4,924 | |
| | | W | 579 | 579 | 434 | 289 | - | 193 | | 556 | 556 | 417 | 278 | - | 185 | | 526 | 526 | 395 | 263 | - | 175 | |

* It may not reach the above capacities in low ambient temperatures.

PEAD-A09AA7.MX

SUZ-KA09NA2.MX

2) HEATING

Rated

Q(Btu/h): 12,000

W: 900

| Indoor D.B. Outdoor W.B. (°F) (°C) | | | 77°F / 25.0°C | | | | | | 68°F / 20.0°C | | | | | | 59°F / 15.0°C | | | | | |
|--|-------|----------|---------------|--------|--------|-------|-----|-------|---------------|--------|--------|-------|-----|-------|---------------|--------|--------|-------|-----|-------|
| | | | Max | Rated | 75% | 50% | 25% | Min | Max | Rated | 75% | 50% | 25% | Min | Max | Rated | 75% | 50% | 25% | Min |
| 65 | 18.3 | Q(Btu/h) | 16,361 | 15,102 | 11,327 | 7,551 | - | 4,984 | 17,053 | 15,741 | 11,806 | 7,871 | - | 5,195 | 17,633 | 15,840 | 11,880 | 7,920 | - | 5,227 |
| | | W | 1,221 | 1,037 | 777 | 518 | - | 253 | 1,183 | 1,005 | 753 | 502 | - | 246 | 1,150 | 941 | 705 | 470 | - | 230 |
| 60 | 15.6 | Q(Btu/h) | 15,518 | 14,324 | 10,743 | 7,162 | - | 4,727 | 16,178 | 14,934 | 11,200 | 7,467 | - | 4,928 | 16,697 | 15,300 | 11,475 | 7,650 | - | 5,049 |
| | | W | 1,207 | 1,025 | 768 | 512 | - | 250 | 1,166 | 990 | 743 | 495 | - | 242 | 1,136 | 932 | 699 | 466 | - | 228 |
| 55 | 12.8 | Q(Btu/h) | 14,649 | 13,522 | 10,142 | 6,761 | - | 4,462 | 15,288 | 14,112 | 10,584 | 7,056 | - | 4,657 | 15,763 | 14,760 | 11,070 | 7,380 | - | 4,871 |
| | | W | 1,187 | 1,007 | 756 | 504 | - | 246 | 1,144 | 971 | 728 | 485 | - | 237 | 1,113 | 923 | 692 | 461 | - | 226 |
| 50 | 10.0 | Q(Btu/h) | 13,759 | 12,701 | 9,525 | 6,350 | - | 4,191 | 14,386 | 13,279 | 9,959 | 6,639 | - | 4,382 | 14,831 | 14,160 | 10,620 | 7,080 | - | 4,673 |
| | | W | 1,160 | 985 | 739 | 493 | - | 241 | 1,115 | 947 | 710 | 473 | - | 231 | 1,083 | 914 | 685 | 457 | - | 223 |
| 45 | 7.2 | Q(Btu/h) | 12,849 | 11,861 | 8,896 | 5,930 | - | 3,914 | 13,473 | 12,436 | 9,327 | 6,218 | - | 4,104 | 13,901 | 13,560 | 10,170 | 6,780 | - | 4,475 |
| | | W | 1,128 | 958 | 719 | 479 | - | 234 | 1,081 | 918 | 689 | 459 | - | 224 | 1,045 | 900 | 675 | 450 | - | 220 |
| 40 | 4.4 | Q(Btu/h) | 11,923 | 11,006 | 8,255 | 5,503 | - | 3,632 | 12,552 | 11,587 | 8,690 | 5,793 | - | 3,824 | 12,973 | 13,200 | 9,900 | 6,600 | - | 4,356 |
| | | W | 1,090 | 926 | 694 | 463 | - | 226 | 1,042 | 885 | 663 | 442 | - | 216 | 1,001 | 891 | 668 | 446 | - | 218 |
| 35 | 1.7 | Q(Btu/h) | 10,984 | 10,139 | 7,604 | 5,070 | - | 3,346 | 11,627 | 10,732 | 8,049 | 5,366 | - | 3,542 | 12,048 | 12,480 | 9,360 | 6,240 | - | 4,118 |
| | | W | 1,046 | 889 | 666 | 444 | - | 217 | 997 | 846 | 635 | 423 | - | 207 | 950 | 873 | 655 | 437 | - | 213 |
| 30 | -1.1 | Q(Btu/h) | 10,035 | 9,263 | 6,947 | 4,631 | - | 3,057 | 10,699 | 9,876 | 7,407 | 4,938 | - | 3,259 | 11,126 | 11,460 | 8,595 | 5,730 | - | 3,782 |
| | | W | 997 | 846 | 635 | 423 | - | 207 | 946 | 803 | 602 | 402 | - | 196 | 895 | 833 | 624 | 416 | - | 204 |
| 25 | -3.9 | Q(Btu/h) | 9,078 | 8,379 | 6,284 | 4,190 | - | 2,765 | 9,771 | 9,019 | 6,765 | 4,510 | - | 2,976 | 10,208 | 10,980 | 8,235 | 5,490 | - | 3,623 |
| | | W | 941 | 799 | 599 | 399 | - | 195 | 890 | 755 | 567 | 378 | - | 185 | 834 | 810 | 608 | 405 | - | 198 |
| 20 | -6.7 | Q(Btu/h) | 8,116 | 7,492 | 5,619 | 3,746 | - | 2,472 | 8,846 | 8,166 | 6,124 | 4,083 | - | 2,695 | 9,293 | 10,200 | 7,650 | 5,100 | - | 3,366 |
| | | W | 879 | 746 | 560 | 373 | - | 182 | 828 | 703 | 527 | 351 | - | 172 | 770 | 761 | 570 | 380 | - | 186 |
| 15 | -9.4 | Q(Btu/h) | 7,153 | 6,603 | 4,952 | 3,301 | - | 2,179 | 7,926 | 7,317 | 5,487 | 3,658 | - | 2,414 | 8,382 | 9,360 | 7,020 | 4,680 | - | 3,089 |
| | | W | 811 | 689 | 517 | 344 | - | 168 | 760 | 645 | 484 | 323 | - | 158 | 702 | 711 | 533 | 356 | - | 174 |
| 10 | -12.2 | Q(Btu/h) | 6,191 | 5,715 | 4,286 | 2,857 | - | 1,886 | 7,015 | 6,475 | 4,856 | 3,237 | - | 2,137 | 7,475 | 8,520 | 6,390 | 4,260 | - | 2,812 |
| | | W | 737 | 626 | 470 | 313 | - | 153 | 687 | 583 | 437 | 292 | - | 143 | 631 | 648 | 486 | 324 | - | 158 |
| 5 | -15.0 | Q(Btu/h) | 5,234 | 4,831 | 3,623 | 2,416 | - | 1,594 | 6,113 | 5,643 | 4,232 | 2,821 | - | 1,862 | 6,573 | 7,500 | 5,625 | 3,750 | - | 2,475 |
| | | W | 658 | 559 | 419 | 279 | - | 137 | 608 | 516 | 387 | 258 | - | 126 | 558 | 576 | 432 | 288 | - | 141 |
| 0 | -17.8 | Q(Btu/h) | 4,284 | 3,954 | 2,966 | 1,977 | - | 1,305 | 5,225 | 4,823 | 3,617 | 2,412 | - | 1,592 | 5,675 | 6,000 | 4,500 | 3,000 | - | 1,980 |
| | | W | 572 | 486 | 364 | 243 | - | 119 | 524 | 445 | 333 | 222 | - | 109 | 483 | 477 | 358 | 239 | - | 117 |
| -4 | -20.0 | Q(Btu/h) | 3,531 | 3,259 | 2,444 | 1,630 | - | 1,075 | 4,526 | 4,177 | 3,133 | 2,089 | - | 1,379 | 4,961 | 6,000 | 4,500 | 3,000 | - | 1,980 |
| | | W | 499 | 424 | 318 | 212 | - | 104 | 452 | 384 | 288 | 192 | - | 94 | 423 | 477 | 358 | 239 | - | 117 |

* Above data is for heating operation without any frost.

PEAD-A12AA7.MX

SUZ-KA12NA2.MX

Rated

Q(Btu/h): 12,000

W: 930

1) COOLING

| Indoor W.B. Outdoor D.B. (°F) (°C) | | 71°F / 21.7°C | | | | | | | 67°F / 19.4°C | | | | | | | 63°F / 17.2°C | | | | | | |
|--|------|---------------|--------|--------|--------|-------|-----|-------|---------------|--------|--------|-------|-----|-------|--|---------------|--------|--------|-------|-----|-------|--|
| | | Max | Rated | 75% | 50% | 25% | Min | | Max | Rated | 75% | 50% | 25% | Min | | Max | Rated | 75% | 50% | 25% | Min | |
| 115 | 46.1 | Q(Btu/h) | 10,954 | 10,954 | 8,216 | 5,477 | - | 4,017 | 10,257 | 10,257 | 7,693 | 5,129 | - | 3,761 | | 9,361 | 9,361 | 7,021 | 4,680 | - | 3,432 | |
| | | W | 1,045 | 1,045 | 783 | 522 | - | 292 | 1,019 | 1,019 | 764 | 510 | - | 285 | | 977 | 977 | 733 | 488 | - | 273 | |
| 110 | 43.3 | Q(Btu/h) | 11,452 | 11,452 | 8,589 | 5,726 | - | 4,199 | 10,656 | 10,656 | 7,992 | 5,328 | - | 3,907 | | 9,759 | 9,759 | 7,320 | 4,880 | - | 3,578 | |
| | | W | 1,028 | 1,028 | 771 | 514 | - | 287 | 1,002 | 1,002 | 752 | 501 | - | 280 | | 955 | 955 | 717 | 478 | - | 267 | |
| 105 | 40.6 | Q(Btu/h) | 11,950 | 11,950 | 8,963 | 5,975 | - | 4,382 | 11,054 | 11,054 | 8,290 | 5,527 | - | 4,053 | | 10,257 | 10,257 | 7,693 | 5,129 | - | 3,761 | |
| | | W | 1,015 | 1,015 | 761 | 507 | - | 284 | 977 | 977 | 733 | 488 | - | 273 | | 934 | 934 | 701 | 467 | - | 261 | |
| 100 | 37.8 | Q(Btu/h) | 12,349 | 12,349 | 9,261 | 6,174 | - | 4,528 | 11,552 | 11,552 | 8,664 | 5,776 | - | 4,236 | | 10,656 | 10,656 | 7,992 | 5,328 | - | 3,907 | |
| | | W | 985 | 985 | 739 | 493 | - | 275 | 955 | 955 | 717 | 478 | - | 267 | | 913 | 913 | 685 | 457 | - | 255 | |
| 95 | 35.0 | Q(Btu/h) | 12,846 | 12,846 | 9,635 | 6,423 | - | 4,710 | 12,000 | 12,000 | 9,000 | 6,000 | - | 4,400 | | 11,154 | 11,154 | 8,365 | 5,577 | - | 4,090 | |
| | | W | 968 | 968 | 726 | 484 | - | 271 | 930 | 930 | 698 | 465 | - | 260 | | 892 | 892 | 669 | 446 | - | 249 | |
| 90 | 32.2 | Q(Btu/h) | 13,245 | 13,245 | 9,934 | 6,622 | - | 4,856 | 12,448 | 12,448 | 9,336 | 6,224 | - | 4,564 | | 11,552 | 11,552 | 8,664 | 5,776 | - | 4,236 | |
| | | W | 934 | 934 | 701 | 467 | - | 261 | 892 | 892 | 669 | 446 | - | 249 | | 858 | 858 | 643 | 429 | - | 240 | |
| 85 | 29.4 | Q(Btu/h) | 13,743 | 13,743 | 10,307 | 6,871 | - | 5,039 | 12,946 | 12,946 | 9,710 | 6,473 | - | 4,747 | | 12,050 | 12,050 | 9,037 | 6,025 | - | 4,418 | |
| | | W | 900 | 900 | 675 | 450 | - | 252 | 858 | 858 | 643 | 429 | - | 240 | | 828 | 828 | 621 | 414 | - | 232 | |
| 80 | 26.7 | Q(Btu/h) | 14,141 | 14,141 | 10,606 | 7,071 | - | 5,185 | 13,344 | 13,344 | 10,008 | 6,672 | - | 4,893 | | 12,548 | 12,548 | 9,411 | 6,274 | - | 4,601 | |
| | | W | 866 | 866 | 650 | 433 | - | 242 | 820 | 820 | 615 | 410 | - | 229 | | 794 | 794 | 596 | 397 | - | 222 | |
| 75 | 23.9 | Q(Btu/h) | 14,639 | 14,639 | 10,979 | 7,320 | - | 5,368 | 13,743 | 13,743 | 10,307 | 6,871 | - | 5,039 | | 12,996 | 12,996 | 9,747 | 6,498 | - | 4,765 | |
| | | W | 828 | 828 | 621 | 414 | - | 232 | 781 | 781 | 586 | 391 | - | 218 | | 764 | 764 | 573 | 382 | - | 213 | |
| 70 | 21.1 | Q(Btu/h) | 14,988 | 14,988 | 11,241 | 7,494 | - | 5,495 | 14,041 | 14,041 | 10,531 | 7,021 | - | 5,149 | | 13,444 | 13,444 | 10,083 | 6,722 | - | 4,929 | |
| | | W | 786 | 786 | 589 | 393 | - | 220 | 747 | 747 | 561 | 374 | - | 209 | | 718 | 718 | 538 | 359 | - | 201 | |
| 67 | 19.4 | Q(Btu/h) | 15,137 | 15,137 | 11,353 | 7,568 | - | 5,550 | 14,340 | 14,340 | 10,755 | 7,170 | - | 5,258 | | 13,743 | 13,743 | 10,307 | 6,871 | - | 5,039 | |
| | | W | 747 | 747 | 561 | 374 | - | 209 | 718 | 718 | 538 | 359 | - | 201 | | 679 | 679 | 510 | 340 | - | 190 | |

* It may not reach the above capacities in low ambient temperatures.

PEAD-A12AA7.MX

SUZ-KA12NA2.MX

Rated

Q(Btu/h): 15,000

W: 1,160

2) HEATING

| Indoor D.B. | | | 77°F / 25.0°C | | | | | | | 68°F / 20.0°C | | | | | | | 59°F / 15.0°C | | | | | | |
|--------------|-------|----------|---------------|--------|--------|-------|-----|-------|--|---------------|--------|--------|-------|-----|-------|--|---------------|--------|--------|-------|-----|-------|--|
| Outdoor W.B. | | | Max | Rated | 75% | 50% | 25% | Min | | Max | Rated | 75% | 50% | 25% | Min | | Max | Rated | 75% | 50% | 25% | Min | |
| (°F) | (°C) | | | | | | | | | | | | | | | | | | | | | | |
| 65 | 18.3 | Q(Btu/h) | 21,395 | 18,878 | 14,158 | 9,439 | - | 6,041 | | 22,300 | 19,676 | 14,757 | 9,838 | - | 6,296 | | 23,059 | 19,800 | 14,850 | 9,900 | - | 6,336 | |
| | | W | 1,612 | 1,336 | 1,002 | 668 | - | 288 | | 1,563 | 1,295 | 971 | 647 | - | 279 | | 1,519 | 1,212 | 909 | 606 | - | 261 | |
| 60 | 15.6 | Q(Btu/h) | 20,292 | 17,905 | 13,429 | 8,952 | - | 5,730 | | 21,156 | 18,667 | 14,000 | 9,334 | - | 5,973 | | 21,835 | 19,125 | 14,344 | 9,563 | - | 6,120 | |
| | | W | 1,594 | 1,321 | 990 | 660 | - | 285 | | 1,540 | 1,276 | 957 | 638 | - | 275 | | 1,500 | 1,201 | 900 | 600 | - | 259 | |
| 55 | 12.8 | Q(Btu/h) | 19,157 | 16,903 | 12,677 | 8,452 | - | 5,409 | | 19,992 | 17,640 | 13,230 | 8,820 | - | 5,645 | | 20,613 | 18,450 | 13,838 | 9,225 | - | 5,904 | |
| | | W | 1,567 | 1,298 | 974 | 649 | - | 280 | | 1,510 | 1,251 | 939 | 626 | - | 270 | | 1,470 | 1,189 | 892 | 595 | - | 256 | |
| 50 | 10.0 | Q(Btu/h) | 17,993 | 15,876 | 11,907 | 7,938 | - | 5,080 | | 18,812 | 16,599 | 12,449 | 8,299 | - | 5,312 | | 19,394 | 17,700 | 13,275 | 8,850 | - | 5,664 | |
| | | W | 1,533 | 1,270 | 952 | 635 | - | 274 | | 1,473 | 1,220 | 915 | 610 | - | 263 | | 1,430 | 1,177 | 883 | 589 | - | 254 | |
| 45 | 7.2 | Q(Btu/h) | 16,803 | 14,826 | 11,120 | 7,413 | - | 4,744 | | 17,618 | 15,545 | 11,659 | 7,773 | - | 4,975 | | 18,178 | 16,950 | 12,713 | 8,475 | - | 5,424 | |
| | | W | 1,490 | 1,235 | 926 | 617 | - | 266 | | 1,428 | 1,183 | 888 | 592 | - | 255 | | 1,380 | 1,160 | 870 | 580 | - | 250 | |
| 40 | 4.4 | Q(Btu/h) | 15,592 | 13,758 | 10,318 | 6,879 | - | 4,403 | | 16,414 | 14,483 | 10,862 | 7,242 | - | 4,635 | | 16,964 | 16,500 | 12,375 | 8,250 | - | 5,280 | |
| | | W | 1,440 | 1,193 | 895 | 597 | - | 257 | | 1,376 | 1,140 | 855 | 570 | - | 246 | | 1,322 | 1,148 | 861 | 574 | - | 248 | |
| 35 | 1.7 | Q(Btu/h) | 14,364 | 12,674 | 9,506 | 6,337 | - | 4,056 | | 15,204 | 13,415 | 10,062 | 6,708 | - | 4,293 | | 15,755 | 15,600 | 11,700 | 7,800 | - | 4,992 | |
| | | W | 1,382 | 1,145 | 859 | 573 | - | 247 | | 1,316 | 1,091 | 818 | 545 | - | 235 | | 1,255 | 1,125 | 844 | 563 | - | 243 | |
| 30 | -1.1 | Q(Btu/h) | 13,122 | 11,578 | 8,684 | 5,789 | - | 3,705 | | 13,991 | 12,345 | 9,259 | 6,172 | - | 3,950 | | 14,549 | 14,325 | 10,744 | 7,163 | - | 4,584 | |
| | | W | 1,316 | 1,091 | 818 | 545 | - | 235 | | 1,249 | 1,035 | 776 | 518 | - | 223 | | 1,182 | 1,073 | 805 | 537 | - | 231 | |
| 25 | -3.9 | Q(Btu/h) | 11,871 | 10,474 | 7,856 | 5,237 | - | 3,352 | | 12,778 | 11,274 | 8,456 | 5,637 | - | 3,608 | | 13,348 | 13,725 | 10,294 | 6,863 | - | 4,392 | |
| | | W | 1,242 | 1,029 | 772 | 515 | - | 222 | | 1,175 | 974 | 730 | 487 | - | 210 | | 1,102 | 1,044 | 783 | 522 | - | 225 | |
| 20 | -6.7 | Q(Btu/h) | 10,613 | 9,365 | 7,023 | 4,682 | - | 2,997 | | 11,568 | 10,207 | 7,655 | 5,103 | - | 3,266 | | 12,152 | 12,750 | 9,563 | 6,375 | - | 4,080 | |
| | | W | 1,161 | 962 | 721 | 481 | - | 207 | | 1,093 | 906 | 679 | 453 | - | 195 | | 1,016 | 980 | 735 | 490 | - | 211 | |
| 15 | -9.4 | Q(Btu/h) | 9,354 | 8,253 | 6,190 | 4,127 | - | 2,641 | | 10,365 | 9,146 | 6,859 | 4,573 | - | 2,927 | | 10,961 | 11,700 | 8,775 | 5,850 | - | 3,744 | |
| | | W | 1,071 | 888 | 666 | 444 | - | 191 | | 1,004 | 832 | 624 | 416 | - | 179 | | 927 | 916 | 687 | 458 | - | 198 | |
| 10 | -12.2 | Q(Btu/h) | 8,096 | 7,144 | 5,358 | 3,572 | - | 2,286 | | 9,173 | 8,094 | 6,070 | 4,047 | - | 2,590 | | 9,775 | 10,650 | 7,988 | 5,325 | - | 3,408 | |
| | | W | 974 | 807 | 605 | 404 | - | 174 | | 907 | 752 | 564 | 376 | - | 162 | | 833 | 835 | 626 | 418 | - | 180 | |
| 5 | -15.0 | Q(Btu/h) | 6,844 | 6,039 | 4,529 | 3,019 | - | 1,932 | | 7,994 | 7,054 | 5,290 | 3,527 | - | 2,257 | | 8,595 | 9,375 | 7,031 | 4,688 | - | 3,000 | |
| | | W | 869 | 720 | 540 | 360 | - | 155 | | 803 | 665 | 499 | 333 | - | 143 | | 737 | 742 | 557 | 371 | - | 160 | |
| 0 | -17.8 | Q(Btu/h) | 5,602 | 4,943 | 3,707 | 2,471 | - | 1,582 | | 6,833 | 6,029 | 4,522 | 3,014 | - | 1,929 | | 7,421 | 7,500 | 5,625 | 3,750 | - | 2,400 | |
| | | W | 756 | 626 | 470 | 313 | - | 135 | | 692 | 573 | 430 | 286 | - | 123 | | 638 | 615 | 461 | 307 | - | 133 | |
| -4 | -20.0 | Q(Btu/h) | 4,617 | 4,074 | 3,055 | 2,037 | - | 1,304 | | 5,918 | 5,222 | 3,916 | 2,611 | - | 1,671 | | 6,487 | 7,500 | 5,625 | 3,750 | - | 2,400 | |
| | | W | 660 | 547 | 410 | 273 | - | 118 | | 597 | 495 | 371 | 247 | - | 107 | | 559 | 615 | 461 | 307 | - | 133 | |

* Above data is for heating operation without any frost.

PEAD-A15AA7.MX

SUZ-KA15NA2.MX

Rated

Q(Btu/h): 15,000

W: 1,150

1) COOLING

| Indoor W.B. | | | 71°F / 21.7°C | | | | | | | 67°F / 19.4°C | | | | | | | 63°F / 17.2°C | | | | | | |
|--------------|------|----------|---------------|--------|--------|-------|-----|-------|--|---------------|--------|--------|-------|-----|-------|--|---------------|--------|--------|-------|-----|-------|--|
| Outdoor D.B. | | | Max | Rated | 75% | 50% | 25% | Min | | Max | Rated | 75% | 50% | 25% | Min | | Max | Rated | 75% | 50% | 25% | Min | |
| (°F) | (°C) | | | | | | | | | | | | | | | | | | | | | | |
| 115 | 46.1 | Q(Btu/h) | 13,693 | 13,693 | 10,270 | 6,846 | - | 5,021 | | 12,822 | 12,822 | 9,616 | 6,411 | - | 4,701 | | 11,701 | 11,701 | 8,776 | 5,851 | - | 4,290 | |
| | | W | 1,292 | 1,292 | 969 | 646 | - | 359 | | 1,260 | 1,260 | 945 | 630 | - | 351 | | 1,208 | 1,208 | 906 | 604 | - | 336 | |
| 110 | 43.3 | Q(Btu/h) | 14,315 | 14,315 | 10,737 | 7,158 | - | 5,249 | | 13,320 | 13,320 | 9,990 | 6,660 | - | 4,884 | | 12,199 | 12,199 | 9,149 | 6,100 | - | 4,473 | |
| | | W | 1,271 | 1,271 | 953 | 635 | - | 354 | | 1,239 | 1,239 | 929 | 620 | - | 345 | | 1,182 | 1,182 | 886 | 591 | - | 329 | |
| 105 | 40.6 | Q(Btu/h) | 14,938 | 14,938 | 11,203 | 7,469 | - | 5,477 | | 13,817 | 13,817 | 10,363 | 6,909 | - | 5,066 | | 12,822 | 12,822 | 9,616 | 6,411 | - | 4,701 | |
| | | W | 1,255 | 1,255 | 941 | 628 | - | 349 | | 1,208 | 1,208 | 906 | 604 | - | 336 | | 1,155 | 1,155 | 866 | 578 | - | 321 | |
| 100 | 37.8 | Q(Btu/h) | 15,436 | 15,436 | 11,577 | 7,718 | - | 5,660 | | 14,440 | 14,440 | 10,830 | 7,220 | - | 5,295 | | 13,320 | 13,320 | 9,990 | 6,660 | - | 4,884 | |
| | | W | 1,218 | 1,218 | 914 | 609 | - | 339 | | 1,182 | 1,182 | 886 | 591 | - | 329 | | 1,129 | 1,129 | 847 | 564 | - | 314 | |
| 95 | 35.0 | Q(Btu/h) | 16,058 | 16,058 | 12,044 | 8,029 | - | 5,888 | | 15,000 | 15,000 | 11,250 | 7,500 | - | 5,500 | | 13,942 | 13,942 | 10,456 | 6,971 | - | 5,112 | |
| | | W | 1,197 | 1,197 | 898 | 599 | - | 333 | | 1,150 | 1,150 | 863 | 575 | - | 320 | | 1,103 | 1,103 | 827 | 551 | - | 307 | |
| 90 | 32.2 | Q(Btu/h) | 16,556 | 16,556 | 12,417 | 8,278 | - | 6,071 | | 15,560 | 15,560 | 11,670 | 7,780 | - | 5,705 | | 14,440 | 14,440 | 10,830 | 7,220 | - | 5,295 | |
| | | W | 1,155 | 1,155 | 866 | 578 | - | 321 | | 1,103 | 1,103 | 827 | 551 | - | 307 | | 1,061 | 1,061 | 796 | 530 | - | 295 | |
| 85 | 29.4 | Q(Btu/h) | 17,178 | 17,178 | 12,884 | 8,589 | - | 6,299 | | 16,183 | 16,183 | 12,137 | 8,091 | - | 5,934 | | 15,062 | 15,062 | 11,297 | 7,531 | - | 5,523 | |
| | | W | 1,113 | 1,113 | 835 | 557 | - | 310 | | 1,061 | 1,061 | 796 | 530 | - | 295 | | 1,024 | 1,024 | 768 | 512 | - | 285 | |
| 80 | 26.7 | Q(Btu/h) | 17,676 | 17,676 | 13,257 | 8,838 | - | 6,481 | | 16,680 | 16,680 | 12,510 | 8,340 | - | 6,116 | | 15,685 | 15,685 | 11,763 | 7,842 | - | 5,751 | |
| | | W | 1,071 | 1,071 | 803 | 536 | - | 298 | | 1,013 | 1,013 | 760 | 507 | - | 282 | | 982 | 982 | 736 | 491 | - | 273 | |
| 75 | 23.9 | Q(Btu/h) | 18,299 | 18,299 | 13,724 | 9,149 | - | 6,710 | | 17,178 | 17,178 | 12,884 | 8,589 | - | 6,299 | | 16,245 | 16,245 | 12,184 | 8,122 | - | 5,956 | |
| | | W | 1,024 | 1,024 | 768 | 512 | - | 285 | | 966 | 966 | 725 | 483 | - | 269 | | 944 | 944 | 708 | 472 | - | 263 | |
| 70 | 21.1 | Q(Btu/h) | 18,734 | 18,734 | 14,051 | 9,367 | - | 6,869 | | 17,552 | 17,552 | 13,164 | 8,776 | - | 6,436 | | 16,805 | 16,805 | 12,604 | 8,402 | - | 6,162 | |
| | | W | 971 | 971 | 729 | 486 | - | 270 | | 924 | 924 | 693 | 462 | - | 257 | | 887 | 887 | 666 | 444 | - | 247 | |
| 67 | 19.4 | Q(Btu/h) | 18,921 | 18,921 | 14,191 | 9,461 | - | 6,938 | | 17,925 | 17,925 | 13,444 | 8,963 | - | 6,573 | | 17,178 | 17,178 | 12,884 | 8,589 | - | 6,299 | |
| | | W | 924 | 924 | 693 | 462 | - | 257 | | 887 | 887 | 666 | 444 | - | 247 | | 840 | 840 | 630 | 420 | - | 234 | |

* It may not reach the above capacities in low ambient temperatures.

PEAD-A15AA7.MX

SUZ-KA15NA2.MX

Rated

Q(Btu/h): 18,000

W: 1,350

2) HEATING

| Indoor D.B. | | | 77°F / 25.0°C | | | | | | | 68°F / 20.0°C | | | | | | | 59°F / 15.0°C | | | | | | |
|--------------|-------|----------|---------------|--------|--------|--------|-----|-------|--|---------------|--------|--------|--------|-----|-------|--|---------------|--------|--------|--------|-----|-------|--|
| Outdoor W.B. | | | Max | Rated | 75% | 50% | 25% | Min | | Max | Rated | 75% | 50% | 25% | Min | | Max | Rated | 75% | 50% | 25% | Min | |
| (°F) | (°C) | | | | | | | | | | | | | | | | | | | | | | |
| 65 | 18.3 | Q(Btu/h) | 27,058 | 22,653 | 16,990 | 11,327 | - | 6,167 | | 28,203 | 23,612 | 17,709 | 11,806 | - | 6,428 | | 29,163 | 23,760 | 17,820 | 11,880 | - | 6,468 | |
| | | W | 2,016 | 1,555 | 1,166 | 777 | - | 322 | | 1,953 | 1,507 | 1,130 | 753 | - | 313 | | 1,899 | 1,411 | 1,058 | 705 | - | 293 | |
| 60 | 15.6 | Q(Btu/h) | 25,664 | 21,486 | 16,114 | 10,743 | - | 5,849 | | 26,756 | 22,401 | 16,800 | 11,200 | - | 6,098 | | 27,615 | 22,950 | 17,213 | 11,475 | - | 6,248 | |
| | | W | 1,992 | 1,537 | 1,153 | 768 | - | 319 | | 1,925 | 1,485 | 1,114 | 743 | - | 308 | | 1,875 | 1,397 | 1,048 | 699 | - | 290 | |
| 55 | 12.8 | Q(Btu/h) | 24,228 | 20,284 | 15,213 | 10,142 | - | 5,522 | | 25,284 | 21,168 | 15,876 | 10,584 | - | 5,763 | | 26,070 | 22,140 | 16,605 | 11,070 | - | 6,027 | |
| | | W | 1,959 | 1,511 | 1,133 | 756 | - | 313 | | 1,888 | 1,456 | 1,092 | 728 | - | 302 | | 1,838 | 1,384 | 1,038 | 692 | - | 287 | |
| 50 | 10.0 | Q(Btu/h) | 22,755 | 19,051 | 14,288 | 9,525 | - | 5,186 | | 23,792 | 19,918 | 14,939 | 9,959 | - | 5,422 | | 24,528 | 21,240 | 15,930 | 10,620 | - | 5,782 | |
| | | W | 1,916 | 1,478 | 1,108 | 739 | - | 307 | | 1,841 | 1,420 | 1,065 | 710 | - | 295 | | 1,788 | 1,370 | 1,028 | 685 | - | 284 | |
| 45 | 7.2 | Q(Btu/h) | 21,251 | 17,791 | 13,344 | 8,896 | - | 4,843 | | 22,282 | 18,654 | 13,991 | 9,327 | - | 5,078 | | 22,989 | 20,340 | 15,255 | 10,170 | - | 5,537 | |
| | | W | 1,863 | 1,437 | 1,078 | 719 | - | 298 | | 1,785 | 1,377 | 1,033 | 689 | - | 286 | | 1,725 | 1,350 | 1,013 | 675 | - | 280 | |
| 40 | 4.4 | Q(Btu/h) | 19,720 | 16,509 | 12,382 | 8,255 | - | 4,494 | | 20,759 | 17,380 | 13,035 | 8,690 | - | 4,731 | | 21,455 | 19,800 | 14,850 | 9,900 | - | 5,390 | |
| | | W | 1,800 | 1,389 | 1,042 | 694 | - | 288 | | 1,720 | 1,327 | 995 | 663 | - | 275 | | 1,652 | 1,337 | 1,002 | 668 | - | 277 | |
| 35 | 1.7 | Q(Btu/h) | 18,166 | 15,209 | 11,407 | 7,604 | - | 4,140 | | 19,229 | 16,099 | 12,074 | 8,049 | - | 4,382 | | 19,925 | 18,720 | 14,040 | 9,360 | - | 5,096 | |
| | | W | 1,728 | 1,333 | 1,000 | 666 | - | 276 | | 1,646 | 1,269 | 952 | 635 | - | 263 | | 1,569 | 1,310 | 982 | 655 | - | 272 | |
| 30 | -1.1 | Q(Btu/h) | 16,596 | 13,894 | 10,421 | 6,947 | - | 3,782 | | 17,694 | 14,814 | 11,110 | 7,407 | - | 4,033 | | 18,401 | 17,190 | 12,893 | 8,595 | - | 4,680 | |
| | | W | 1,645 | 1,269 | 952 | 635 | - | 263 | | 1,562 | 1,205 | 904 | 602 | - | 250 | | 1,477 | 1,249 | 937 | 624 | - | 259 | |
| 25 | -3.9 | Q(Btu/h) | 15,013 | 12,569 | 9,427 | 6,284 | - | 3,422 | | 16,160 | 13,529 | 10,147 | 6,765 | - | 3,683 | | 16,882 | 16,470 | 12,353 | 8,235 | - | 4,484 | |
| | | W | 1,553 | 1,198 | 899 | 599 | - | 248 | | 1,469 | 1,133 | 850 | 567 | - | 235 | | 1,377 | 1,215 | 911 | 608 | - | 252 | |
| 20 | -6.7 | Q(Btu/h) | 13,423 | 11,238 | 8,428 | 5,619 | - | 3,059 | | 14,630 | 12,248 | 9,186 | 6,124 | - | 3,334 | | 15,369 | 15,300 | 11,475 | 7,650 | - | 4,165 | |
| | | W | 1,451 | 1,119 | 840 | 560 | - | 232 | | 1,366 | 1,054 | 791 | 527 | - | 219 | | 1,271 | 1,141 | 856 | 570 | - | 237 | |
| 15 | -9.4 | Q(Btu/h) | 11,830 | 9,904 | 7,428 | 4,952 | - | 2,696 | | 13,109 | 10,975 | 8,231 | 5,487 | - | 2,988 | | 13,862 | 14,040 | 10,530 | 7,020 | - | 3,822 | |
| | | W | 1,339 | 1,033 | 775 | 517 | - | 214 | | 1,255 | 968 | 726 | 484 | - | 201 | | 1,158 | 1,067 | 800 | 533 | - | 221 | |
| 10 | -12.2 | Q(Btu/h) | 10,239 | 8,572 | 6,429 | 4,286 | - | 2,334 | | 11,601 | 9,712 | 7,284 | 4,856 | - | 2,644 | | 12,362 | 12,780 | 9,585 | 6,390 | - | 3,479 | |
| | | W | 1,218 | 939 | 704 | 470 | - | 195 | | 1,134 | 875 | 656 | 437 | - | 181 | | 1,041 | 972 | 729 | 486 | - | 202 | |
| 5 | -15.0 | Q(Btu/h) | 8,656 | 7,247 | 5,435 | 3,623 | - | 1,973 | | 10,110 | 8,464 | 6,348 | 4,232 | - | 2,304 | | 10,870 | 11,250 | 8,438 | 5,625 | - | 3,063 | |
| | | W | 1,086 | 838 | 628 | 419 | - | 174 | | 1,004 | 774 | 581 | 387 | - | 161 | | 921 | 864 | 648 | 432 | - | 179 | |
| 0 | -17.8 | Q(Btu/h) | 7,084 | 5,931 | 4,448 | 2,966 | - | 1,615 | | 8,641 | 7,235 | 5,426 | 3,617 | - | 1,969 | | 9,386 | 9,000 | 6,750 | 4,500 | - | 2,450 | |
| | | W | 945 | 729 | 547 | 364 | - | 151 | | 864 | 667 | 500 | 333 | - | 138 | | 798 | 716 | 537 | 358 | - | 148 | |
| -4 | -20.0 | Q(Btu/h) | 5,839 | 4,889 | 3,666 | 2,444 | - | 1,331 | | 7,485 | 6,266 | 4,700 | 3,133 | - | 1,706 | | 8,204 | 9,000 | 6,750 | 4,500 | - | 2,450 | |
| | | W | 825 | 636 | 477 | 318 | - | 132 | | 746 | 576 | 432 | 288 | - | 119 | | 698 | 716 | 537 | 358 | - | 148 | |

* Above data is for heating operation without any frost.

SVZ-KP12NA.MX

SUZ-KA12NA2.MX

Rated

Q(Btu/h): 12,000

W: 940

1) COOLING

| Indoor W.B. | | | 71°F / 21.7°C | | | | | | | 67°F / 19.4°C | | | | | | | 63°F / 17.2°C | | | | | | |
|--------------|------|----------|---------------|--------|--------|-------|-----|-------|--|---------------|--------|--------|-------|-----|-------|--|---------------|--------|--------|-------|-----|-------|--|
| Outdoor D.B. | | | Max | Rated | 75% | 50% | 25% | Min | | Max | Rated | 75% | 50% | 25% | Min | | Max | Rated | 75% | 50% | 25% | Min | |
| (°F) | (°C) | | | | | | | | | | | | | | | | | | | | | | |
| 115 | 46.1 | Q(Btu/h) | 10,954 | 10,954 | 8,216 | 5,477 | - | 3,925 | | 10,257 | 10,257 | 7,693 | 5,129 | - | 3,676 | | 9,361 | 9,361 | 7,021 | 4,680 | - | 3,354 | |
| | | W | 1,056 | 1,056 | 792 | 528 | - | 292 | | 1,030 | 1,030 | 773 | 515 | - | 285 | | 987 | 987 | 740 | 494 | - | 273 | |
| 110 | 43.3 | Q(Btu/h) | 11,452 | 11,452 | 8,589 | 5,726 | - | 4,104 | | 10,656 | 10,656 | 7,992 | 5,328 | - | 3,818 | | 9,759 | 9,759 | 7,320 | 4,880 | - | 3,497 | |
| | | W | 1,039 | 1,039 | 779 | 519 | - | 287 | | 1,013 | 1,013 | 760 | 506 | - | 280 | | 966 | 966 | 724 | 483 | - | 267 | |
| 105 | 40.6 | Q(Btu/h) | 11,950 | 11,950 | 8,963 | 5,975 | - | 4,282 | | 11,054 | 11,054 | 8,290 | 5,527 | - | 3,961 | | 10,257 | 10,257 | 7,693 | 5,129 | - | 3,676 | |
| | | W | 1,026 | 1,026 | 769 | 513 | - | 284 | | 987 | 987 | 740 | 494 | - | 273 | | 944 | 944 | 708 | 472 | - | 261 | |
| 100 | 37.8 | Q(Btu/h) | 12,349 | 12,349 | 9,261 | 6,174 | - | 4,425 | | 11,552 | 11,552 | 8,664 | 5,776 | - | 4,139 | | 10,656 | 10,656 | 7,992 | 5,328 | - | 3,818 | |
| | | W | 996 | 996 | 747 | 498 | - | 275 | | 966 | 966 | 724 | 483 | - | 267 | | 923 | 923 | 692 | 461 | - | 255 | |
| 95 | 35.0 | Q(Btu/h) | 12,846 | 12,846 | 9,635 | 6,423 | - | 4,603 | | 12,000 | 12,000 | 9,000 | 6,000 | - | 4,300 | | 11,154 | 11,154 | 8,365 | 5,577 | - | 3,997 | |
| | | W | 979 | 979 | 734 | 489 | - | 271 | | 940 | 940 | 705 | 470 | - | 260 | | 901 | 901 | 676 | 451 | - | 249 | |
| 90 | 32.2 | Q(Btu/h) | 13,245 | 13,245 | 9,934 | 6,622 | - | 4,746 | | 12,448 | 12,448 | 9,336 | 6,224 | - | 4,461 | | 11,552 | 11,552 | 8,664 | 5,776 | - | 4,139 | |
| | | W | 944 | 944 | 708 | 472 | - | 261 | | 901 | 901 | 676 | 451 | - | 249 | | 867 | 867 | 650 | 434 | - | 240 | |
| 85 | 29.4 | Q(Btu/h) | 13,743 | 13,743 | 10,307 | 6,871 | - | 4,924 | | 12,946 | 12,946 | 9,710 | 6,473 | - | 4,639 | | 12,050 | 12,050 | 9,037 | 6,025 | - | 4,318 | |
| | | W | 910 | 910 | 682 | 455 | - | 252 | | 867 | 867 | 650 | 434 | - | 240 | | 837 | 837 | 628 | 418 | - | 232 | |
| 80 | 26.7 | Q(Btu/h) | 14,141 | 14,141 | 10,606 | 7,071 | - | 5,067 | | 13,344 | 13,344 | 10,008 | 6,672 | - | 4,782 | | 12,548 | 12,548 | 9,411 | 6,274 | - | 4,496 | |
| | | W | 876 | 876 | 657 | 438 | - | 242 | | 828 | 828 | 621 | 414 | - | 229 | | 803 | 803 | 602 | 401 | - | 222 | |
| 75 | 23.9 | Q(Btu/h) | 14,639 | 14,639 | 10,979 | 7,320 | - | 5,246 | | 13,743 | 13,743 | 10,307 | 6,871 | - | 4,924 | | 12,996 | 12,996 | 9,747 | 6,498 | - | 4,657 | |
| | | W | 837 | 837 | 628 | 418 | - | 232 | | 790 | 790 | 592 | 395 | - | 218 | | 772 | 772 | 579 | 386 | - | 213 | |
| 70 | 21.1 | Q(Btu/h) | 14,988 | 14,988 | 11,241 | 7,494 | - | 5,371 | | 14,041 | 14,041 | 10,531 | 7,021 | - | 5,032 | | 13,444 | 13,444 | 10,083 | 6,722 | - | 4,817 | |
| | | W | 794 | 794 | 596 | 397 | - | 220 | | 755 | 755 | 567 | 378 | - | 209 | | 725 | 725 | 544 | 363 | - | 201 | |
| 67 | 19.4 | Q(Btu/h) | 15,137 | 15,137 | 11,353 | 7,568 | - | 5,424 | | 14,340 | 14,340 | 10,755 | 7,170 | - | 5,139 | | 13,743 | 13,743 | 10,307 | 6,871 | - | 4,924 | |
| | | W | 755 | 755 | 567 | 378 | - | 209 | | 725 | 725 | 544 | 363 | - | 201 | | 687 | 687 | 515 | 343 | - | 190 | |

* It may not reach the above capacities in low ambient temperatures.

SVZ-KP12NA.MX
SUZ-KA12NA2.MX
2) HEATING

Rated
Q(Btu/h): 15,000
W: 1,210

| Indoor D.B. Outdoor W.B. (°F) (°C) | | | 77°F / 25.0°C | | | | | | 68°F / 20.0°C | | | | | | 59°F / 15.0°C | | | | | |
|--|-------|----------|---------------|--------|--------|-------|-----|-------|---------------|--------|--------|-------|-----|-------|---------------|--------|--------|-------|-----|-------|
| | | | Max | Rated | 75% | 50% | 25% | Min | Max | Rated | 75% | 50% | 25% | Min | Max | Rated | 75% | 50% | 25% | Min |
| 65 | 18.3 | Q(Btu/h) | 21,017 | 18,878 | 14,158 | 9,439 | - | 5,915 | 21,906 | 19,676 | 14,757 | 9,838 | - | 6,165 | 22,652 | 19,800 | 14,850 | 9,900 | - | 6,204 |
| | | W | 1,659 | 1,394 | 1,045 | 697 | - | 311 | 1,607 | 1,351 | 1,013 | 675 | - | 301 | 1,562 | 1,264 | 948 | 632 | - | 282 |
| 60 | 15.6 | Q(Btu/h) | 19,934 | 17,905 | 13,429 | 8,952 | - | 5,610 | 20,783 | 18,667 | 14,000 | 9,334 | - | 5,849 | 21,450 | 19,125 | 14,344 | 9,563 | - | 5,993 |
| | | W | 1,639 | 1,377 | 1,033 | 689 | - | 307 | 1,584 | 1,331 | 998 | 666 | - | 297 | 1,543 | 1,252 | 939 | 626 | - | 279 |
| 55 | 12.8 | Q(Btu/h) | 18,819 | 16,903 | 12,677 | 8,452 | - | 5,296 | 19,640 | 17,640 | 13,230 | 8,820 | - | 5,527 | 20,249 | 18,450 | 13,838 | 9,225 | - | 5,781 |
| | | W | 1,612 | 1,354 | 1,016 | 677 | - | 302 | 1,553 | 1,305 | 979 | 653 | - | 291 | 1,512 | 1,240 | 930 | 620 | - | 277 |
| 50 | 10.0 | Q(Btu/h) | 17,675 | 15,876 | 11,907 | 7,938 | - | 4,974 | 18,480 | 16,599 | 12,449 | 8,299 | - | 5,201 | 19,052 | 17,700 | 13,275 | 8,850 | - | 5,546 |
| | | W | 1,576 | 1,325 | 993 | 662 | - | 296 | 1,515 | 1,273 | 955 | 637 | - | 284 | 1,471 | 1,228 | 921 | 614 | - | 274 |
| 45 | 7.2 | Q(Btu/h) | 16,507 | 14,826 | 11,120 | 7,413 | - | 4,646 | 17,307 | 15,545 | 11,659 | 7,773 | - | 4,871 | 17,857 | 16,950 | 12,713 | 8,475 | - | 5,311 |
| | | W | 1,533 | 1,288 | 966 | 644 | - | 287 | 1,469 | 1,234 | 926 | 617 | - | 275 | 1,420 | 1,210 | 908 | 605 | - | 270 |
| 40 | 4.4 | Q(Btu/h) | 15,317 | 13,758 | 10,318 | 6,879 | - | 4,311 | 16,125 | 14,483 | 10,862 | 7,242 | - | 4,538 | 16,665 | 16,500 | 12,375 | 8,250 | - | 5,170 |
| | | W | 1,481 | 1,245 | 934 | 622 | - | 278 | 1,415 | 1,189 | 892 | 595 | - | 265 | 1,359 | 1,198 | 898 | 599 | - | 267 |
| 35 | 1.7 | Q(Btu/h) | 14,111 | 12,674 | 9,506 | 6,337 | - | 3,971 | 14,936 | 13,415 | 10,062 | 6,708 | - | 4,204 | 15,477 | 15,600 | 11,700 | 7,800 | - | 4,888 |
| | | W | 1,422 | 1,195 | 896 | 597 | - | 267 | 1,354 | 1,138 | 853 | 569 | - | 254 | 1,291 | 1,174 | 880 | 587 | - | 262 |
| 30 | -1.1 | Q(Btu/h) | 12,891 | 11,578 | 8,684 | 5,789 | - | 3,628 | 13,744 | 12,345 | 9,259 | 6,172 | - | 3,868 | 14,293 | 14,325 | 10,744 | 7,163 | - | 4,489 |
| | | W | 1,354 | 1,138 | 853 | 569 | - | 254 | 1,285 | 1,080 | 810 | 540 | - | 241 | 1,215 | 1,119 | 839 | 560 | - | 250 |
| 25 | -3.9 | Q(Btu/h) | 11,661 | 10,474 | 7,856 | 5,237 | - | 3,282 | 12,552 | 11,274 | 8,456 | 5,637 | - | 3,533 | 13,113 | 13,725 | 10,294 | 6,863 | - | 4,301 |
| | | W | 1,278 | 1,074 | 805 | 537 | - | 240 | 1,209 | 1,016 | 762 | 508 | - | 227 | 1,133 | 1,089 | 817 | 545 | - | 243 |
| 20 | -6.7 | Q(Btu/h) | 10,426 | 9,365 | 7,023 | 4,682 | - | 2,934 | 11,364 | 10,207 | 7,655 | 5,103 | - | 3,198 | 11,938 | 12,750 | 9,563 | 6,375 | - | 3,995 |
| | | W | 1,194 | 1,003 | 752 | 502 | - | 224 | 1,124 | 945 | 709 | 472 | - | 211 | 1,046 | 1,022 | 767 | 511 | - | 228 |
| 15 | -9.4 | Q(Btu/h) | 9,189 | 8,253 | 6,190 | 4,127 | - | 2,586 | 10,182 | 9,146 | 6,859 | 4,573 | - | 2,866 | 10,767 | 11,700 | 8,775 | 5,850 | - | 3,666 |
| | | W | 1,102 | 926 | 694 | 463 | - | 207 | 1,033 | 868 | 651 | 434 | - | 194 | 953 | 956 | 717 | 478 | - | 213 |
| 10 | -12.2 | Q(Btu/h) | 7,953 | 7,144 | 5,358 | 3,572 | - | 2,238 | 9,011 | 8,094 | 6,070 | 4,047 | - | 2,536 | 9,602 | 10,650 | 7,988 | 5,325 | - | 3,337 |
| | | W | 1,002 | 842 | 631 | 421 | - | 188 | 933 | 784 | 588 | 392 | - | 175 | 857 | 871 | 653 | 436 | - | 194 |
| 5 | -15.0 | Q(Btu/h) | 6,723 | 6,039 | 4,529 | 3,019 | - | 1,892 | 7,853 | 7,054 | 5,290 | 3,527 | - | 2,210 | 8,443 | 9,375 | 7,031 | 4,688 | - | 2,938 |
| | | W | 894 | 751 | 563 | 375 | - | 168 | 826 | 694 | 521 | 347 | - | 155 | 758 | 774 | 581 | 387 | - | 173 |
| 0 | -17.8 | Q(Btu/h) | 5,503 | 4,943 | 3,707 | 2,471 | - | 1,549 | 6,712 | 6,029 | 4,522 | 3,014 | - | 1,889 | 7,290 | 7,500 | 5,625 | 3,750 | - | 2,350 |
| | | W | 777 | 653 | 490 | 327 | - | 146 | 711 | 598 | 448 | 299 | - | 133 | 657 | 641 | 481 | 321 | - | 143 |
| -4 | -20.0 | Q(Btu/h) | 4,536 | 4,074 | 3,055 | 2,037 | - | 1,276 | 5,814 | 5,222 | 3,916 | 2,611 | - | 1,636 | 6,372 | 7,500 | 5,625 | 3,750 | - | 2,350 |
| | | W | 678 | 570 | 428 | 285 | - | 127 | 614 | 516 | 387 | 258 | - | 115 | 575 | 641 | 481 | 321 | - | 143 |

* Above data is for heating operation without any frost.

MLZ-KP09NA-U1**SUZ-KA09NA2.MX****Rated**

Q(Btu/h): 9,000

W: 710

1) COOLING

| Indoor W.B. Outdoor D.B. (°F) (°C) | | | 71°F / 21.7°C | | | | | | 67°F / 19.4°C | | | | | | 63°F / 17.2°C | | | | | |
|--|------|----------|---------------|--------|-------|-------|-----|-------|---------------|--------|-------|-------|-----|-------|---------------|--------|-------|-------|-----|-------|
| | | | Max | Rated | 75% | 50% | 25% | Min | Max | Rated | 75% | 50% | 25% | Min | Max | Rated | 75% | 50% | 25% | Min |
| 115 | 46.1 | Q(Btu/h) | 8,216 | 8,216 | 6,162 | 4,108 | - | 3,286 | 7,693 | 7,693 | 5,770 | 3,846 | - | 3,077 | 7,021 | 7,021 | 5,266 | 3,510 | - | 2,808 |
| | | W | 798 | 798 | 598 | 399 | - | 225 | 778 | 778 | 584 | 389 | - | 219 | 746 | 746 | 559 | 373 | - | 210 |
| 110 | 43.3 | Q(Btu/h) | 8,589 | 8,589 | 6,442 | 4,295 | - | 3,436 | 7,992 | 7,992 | 5,994 | 3,996 | - | 3,197 | 7,320 | 7,320 | 5,490 | 3,660 | - | 2,928 |
| | | W | 785 | 785 | 588 | 392 | - | 221 | 765 | 765 | 574 | 383 | - | 216 | 729 | 729 | 547 | 365 | - | 205 |
| 105 | 40.6 | Q(Btu/h) | 8,963 | 8,963 | 6,722 | 4,481 | - | 3,585 | 8,290 | 8,290 | 6,218 | 4,145 | - | 3,316 | 7,693 | 7,693 | 5,770 | 3,846 | - | 3,077 |
| | | W | 775 | 775 | 581 | 387 | - | 218 | 746 | 746 | 559 | 373 | - | 210 | 713 | 713 | 535 | 357 | - | 201 |
| 100 | 37.8 | Q(Btu/h) | 9,261 | 9,261 | 6,946 | 4,631 | - | 3,705 | 8,664 | 8,664 | 6,498 | 4,332 | - | 3,466 | 7,992 | 7,992 | 5,994 | 3,996 | - | 3,197 |
| | | W | 752 | 752 | 564 | 376 | - | 212 | 729 | 729 | 547 | 365 | - | 205 | 697 | 697 | 523 | 349 | - | 196 |
| 95 | 35.0 | Q(Btu/h) | 9,635 | 9,635 | 7,226 | 4,817 | - | 3,854 | 9,000 | 9,000 | 6,750 | 4,500 | - | 3,600 | 8,365 | 8,365 | 6,274 | 4,183 | - | 3,346 |
| | | W | 739 | 739 | 554 | 370 | - | 208 | 710 | 710 | 533 | 355 | - | 200 | 681 | 681 | 511 | 340 | - | 192 |
| 90 | 32.2 | Q(Btu/h) | 9,934 | 9,934 | 7,450 | 4,967 | - | 3,973 | 9,336 | 9,336 | 7,002 | 4,668 | - | 3,734 | 8,664 | 8,664 | 6,498 | 4,332 | - | 3,466 |
| | | W | 713 | 713 | 535 | 357 | - | 201 | 681 | 681 | 511 | 340 | - | 192 | 655 | 655 | 491 | 327 | - | 184 |
| 85 | 29.4 | Q(Btu/h) | 10,307 | 10,307 | 7,730 | 5,154 | - | 4,123 | 9,710 | 9,710 | 7,282 | 4,855 | - | 3,884 | 9,037 | 9,037 | 6,778 | 4,519 | - | 3,615 |
| | | W | 687 | 687 | 515 | 344 | - | 194 | 655 | 655 | 491 | 327 | - | 184 | 632 | 632 | 474 | 316 | - | 178 |
| 80 | 26.7 | Q(Btu/h) | 10,606 | 10,606 | 7,954 | 5,303 | - | 4,242 | 10,008 | 10,008 | 7,506 | 5,004 | - | 4,003 | 9,411 | 9,411 | 7,058 | 4,705 | - | 3,764 |
| | | W | 661 | 661 | 496 | 331 | - | 186 | 626 | 626 | 469 | 313 | - | 176 | 606 | 606 | 455 | 303 | - | 171 |
| 75 | 23.9 | Q(Btu/h) | 10,979 | 10,979 | 8,234 | 5,490 | - | 4,392 | 10,307 | 10,307 | 7,730 | 5,154 | - | 4,123 | 9,747 | 9,747 | 7,310 | 4,873 | - | 3,899 |
| | | W | 632 | 632 | 474 | 316 | - | 178 | 597 | 597 | 447 | 298 | - | 168 | 583 | 583 | 437 | 291 | - | 164 |
| 70 | 21.1 | Q(Btu/h) | 11,241 | 11,241 | 8,430 | 5,620 | - | 4,496 | 10,531 | 10,531 | 7,898 | 5,266 | - | 4,212 | 10,083 | 10,083 | 7,562 | 5,041 | - | 4,033 |
| | | W | 600 | 600 | 450 | 300 | - | 169 | 571 | 571 | 428 | 285 | - | 161 | 548 | 548 | 411 | 274 | - | 154 |
| 67 | 19.4 | Q(Btu/h) | 11,353 | 11,353 | 8,515 | 5,676 | - | 4,541 | 10,755 | 10,755 | 8,066 | 5,378 | - | 4,302 | 10,307 | 10,307 | 7,730 | 5,154 | - | 4,123 |
| | | W | 571 | 571 | 428 | 285 | - | 161 | 548 | 548 | 411 | 274 | - | 154 | 519 | 519 | 389 | 259 | - | 146 |

* It may not reach the above capacities in low ambient temperatures.

MLZ-KP09NA-U1
SUZ-KA09NA2.MX
2) HEATING

Rated
Q(Btu/h): 12,000
W: 860

| Indoor D.B. Outdoor W.B. (°F) (°C) | | | 77°F / 25.0°C | | | | | | 68°F / 20.0°C | | | | | | 59°F / 15.0°C | | | | | |
|--|-------|----------|---------------|--------|--------|-------|-----|-------|---------------|--------|--------|-------|-----|-------|---------------|--------|--------|-------|-----|-------|
| | | | Max | Rated | 75% | 50% | 25% | Min | Max | Rated | 75% | 50% | 25% | Min | Max | Rated | 75% | 50% | 25% | Min |
| 65 | 18.3 | Q(Btu/h) | 16,361 | 15,102 | 11,327 | 7,551 | - | 5,047 | 17,053 | 15,741 | 11,806 | 7,871 | - | 5,260 | 17,633 | 15,840 | 11,880 | 7,920 | - | 5,293 |
| | | W | 1,152 | 990 | 743 | 495 | - | 253 | 1,116 | 960 | 720 | 480 | - | 246 | 1,085 | 899 | 674 | 449 | - | 230 |
| 60 | 15.6 | Q(Btu/h) | 15,518 | 14,324 | 10,743 | 7,162 | - | 4,787 | 16,178 | 14,934 | 11,200 | 7,467 | - | 4,990 | 16,697 | 15,300 | 11,475 | 7,650 | - | 5,113 |
| | | W | 1,138 | 979 | 734 | 489 | - | 250 | 1,100 | 946 | 710 | 473 | - | 242 | 1,072 | 890 | 668 | 445 | - | 228 |
| 55 | 12.8 | Q(Btu/h) | 14,649 | 13,522 | 10,142 | 6,761 | - | 4,519 | 15,288 | 14,112 | 10,584 | 7,056 | - | 4,716 | 15,763 | 14,760 | 11,070 | 7,380 | - | 4,932 |
| | | W | 1,119 | 963 | 722 | 481 | - | 246 | 1,079 | 928 | 696 | 464 | - | 237 | 1,050 | 882 | 661 | 441 | - | 226 |
| 50 | 10.0 | Q(Btu/h) | 13,759 | 12,701 | 9,525 | 6,350 | - | 4,244 | 14,386 | 13,279 | 9,959 | 6,639 | - | 4,437 | 14,831 | 14,160 | 10,620 | 7,080 | - | 4,732 |
| | | W | 1,095 | 941 | 706 | 471 | - | 241 | 1,052 | 905 | 679 | 452 | - | 231 | 1,022 | 873 | 655 | 436 | - | 223 |
| 45 | 7.2 | Q(Btu/h) | 12,849 | 11,861 | 8,896 | 5,930 | - | 3,964 | 13,473 | 12,436 | 9,327 | 6,218 | - | 4,156 | 13,901 | 13,560 | 10,170 | 6,780 | - | 4,531 |
| | | W | 1,065 | 916 | 687 | 458 | - | 234 | 1,020 | 877 | 658 | 439 | - | 224 | 986 | 860 | 645 | 430 | - | 220 |
| 40 | 4.4 | Q(Btu/h) | 11,923 | 11,006 | 8,255 | 5,503 | - | 3,678 | 12,552 | 11,587 | 8,690 | 5,793 | - | 3,872 | 12,973 | 13,200 | 9,900 | 6,600 | - | 4,411 |
| | | W | 1,029 | 885 | 664 | 442 | - | 226 | 983 | 845 | 634 | 423 | - | 216 | 944 | 851 | 639 | 426 | - | 218 |
| 35 | 1.7 | Q(Btu/h) | 10,984 | 10,139 | 7,604 | 5,070 | - | 3,388 | 11,627 | 10,732 | 8,049 | 5,366 | - | 3,586 | 12,048 | 12,480 | 9,360 | 6,240 | - | 4,170 |
| | | W | 987 | 849 | 637 | 425 | - | 217 | 940 | 809 | 607 | 404 | - | 207 | 897 | 834 | 626 | 417 | - | 213 |
| 30 | -1.1 | Q(Btu/h) | 10,035 | 9,263 | 6,947 | 4,631 | - | 3,095 | 10,699 | 9,876 | 7,407 | 4,938 | - | 3,300 | 11,126 | 11,460 | 8,595 | 5,730 | - | 3,830 |
| | | W | 940 | 809 | 606 | 404 | - | 207 | 892 | 768 | 576 | 384 | - | 196 | 844 | 796 | 597 | 398 | - | 204 |
| 25 | -3.9 | Q(Btu/h) | 9,078 | 8,379 | 6,284 | 4,190 | - | 2,800 | 9,771 | 9,019 | 6,765 | 4,510 | - | 3,014 | 10,208 | 10,980 | 8,235 | 5,490 | - | 3,669 |
| | | W | 887 | 763 | 572 | 382 | - | 195 | 839 | 722 | 541 | 361 | - | 185 | 787 | 774 | 581 | 387 | - | 198 |
| 20 | -6.7 | Q(Btu/h) | 8,116 | 7,492 | 5,619 | 3,746 | - | 2,503 | 8,846 | 8,166 | 6,124 | 4,083 | - | 2,729 | 9,293 | 10,200 | 7,650 | 5,100 | - | 3,409 |
| | | W | 829 | 713 | 535 | 357 | - | 182 | 781 | 672 | 504 | 336 | - | 172 | 726 | 727 | 545 | 363 | - | 186 |
| 15 | -9.4 | Q(Btu/h) | 7,153 | 6,603 | 4,952 | 3,301 | - | 2,206 | 7,926 | 7,317 | 5,487 | 3,658 | - | 2,445 | 8,382 | 9,360 | 7,020 | 4,680 | - | 3,128 |
| | | W | 765 | 658 | 494 | 329 | - | 168 | 717 | 617 | 462 | 308 | - | 158 | 662 | 679 | 510 | 340 | - | 174 |
| 10 | -12.2 | Q(Btu/h) | 6,191 | 5,715 | 4,286 | 2,857 | - | 1,910 | 7,015 | 6,475 | 4,856 | 3,237 | - | 2,164 | 7,475 | 8,520 | 6,390 | 4,260 | - | 2,847 |
| | | W | 696 | 598 | 449 | 299 | - | 153 | 648 | 557 | 418 | 279 | - | 143 | 595 | 619 | 464 | 310 | - | 158 |
| 5 | -15.0 | Q(Btu/h) | 5,234 | 4,831 | 3,623 | 2,416 | - | 1,614 | 6,113 | 5,643 | 4,232 | 2,821 | - | 1,886 | 6,573 | 7,500 | 5,625 | 3,750 | - | 2,506 |
| | | W | 621 | 534 | 400 | 267 | - | 137 | 574 | 493 | 370 | 247 | - | 126 | 526 | 550 | 413 | 275 | - | 141 |
| 0 | -17.8 | Q(Btu/h) | 4,284 | 3,954 | 2,966 | 1,977 | - | 1,321 | 5,225 | 4,823 | 3,617 | 2,412 | - | 1,612 | 5,675 | 6,000 | 4,500 | 3,000 | - | 2,005 |
| | | W | 540 | 464 | 348 | 232 | - | 119 | 494 | 425 | 319 | 212 | - | 109 | 456 | 456 | 342 | 228 | - | 117 |
| -4 | -20.0 | Q(Btu/h) | 3,531 | 3,259 | 2,444 | 1,630 | - | 1,089 | 4,526 | 4,177 | 3,133 | 2,089 | - | 1,396 | 4,961 | 6,000 | 4,500 | 3,000 | - | 2,005 |
| | | W | 471 | 405 | 304 | 203 | - | 104 | 426 | 367 | 275 | 183 | - | 94 | 399 | 456 | 342 | 228 | - | 117 |

* Above data is for heating operation without any frost.

MLZ-KP12NA-U1

SUZ-KA12NA2.MX

Rated

Q(Btu/h): 12,000

W: 960

1) COOLING

| Indoor W.B. Outdoor D.B. (°F) (°C) | | | 71°F / 21.7°C | | | | | | 67°F / 19.4°C | | | | | | 63°F / 17.2°C | | | | | |
|--|------|----------|---------------|--------|--------|-------|-----|-------|---------------|--------|--------|-------|-----|-------|---------------|--------|--------|-------|-----|-------|
| | | | Max | Rated | 75% | 50% | 25% | Min | Max | Rated | 75% | 50% | 25% | Min | Max | Rated | 75% | 50% | 25% | Min |
| 115 | 46.1 | Q(Btu/h) | 10,954 | 10,954 | 8,216 | 5,477 | - | 3,560 | 10,257 | 10,257 | 7,693 | 5,129 | - | 3,334 | 9,361 | 9,361 | 7,021 | 4,680 | - | 3,042 |
| | | W | 1,078 | 1,078 | 809 | 539 | - | 258 | 1,052 | 1,052 | 789 | 526 | - | 252 | 1,008 | 1,008 | 756 | 504 | - | 242 |
| 110 | 43.3 | Q(Btu/h) | 11,452 | 11,452 | 8,589 | 5,726 | - | 3,722 | 10,656 | 10,656 | 7,992 | 5,328 | - | 3,463 | 9,759 | 9,759 | 7,320 | 4,880 | - | 3,172 |
| | | W | 1,061 | 1,061 | 796 | 530 | - | 254 | 1,035 | 1,035 | 776 | 517 | - | 248 | 986 | 986 | 740 | 493 | - | 236 |
| 105 | 40.6 | Q(Btu/h) | 11,950 | 11,950 | 8,963 | 5,975 | - | 3,884 | 11,054 | 11,054 | 8,290 | 5,527 | - | 3,593 | 10,257 | 10,257 | 7,693 | 5,129 | - | 3,334 |
| | | W | 1,048 | 1,048 | 786 | 524 | - | 251 | 1,008 | 1,008 | 756 | 504 | - | 242 | 964 | 964 | 723 | 482 | - | 231 |
| 100 | 37.8 | Q(Btu/h) | 12,349 | 12,349 | 9,261 | 6,174 | - | 4,013 | 11,552 | 11,552 | 8,664 | 5,776 | - | 3,754 | 10,656 | 10,656 | 7,992 | 5,328 | - | 3,463 |
| | | W | 1,017 | 1,017 | 763 | 508 | - | 244 | 986 | 986 | 740 | 493 | - | 236 | 942 | 942 | 707 | 471 | - | 226 |
| 95 | 35.0 | Q(Btu/h) | 12,846 | 12,846 | 9,635 | 6,423 | - | 4,175 | 12,000 | 12,000 | 9,000 | 6,000 | - | 3,900 | 11,154 | 11,154 | 8,365 | 5,577 | - | 3,625 |
| | | W | 999 | 999 | 750 | 500 | - | 239 | 960 | 960 | 720 | 480 | - | 230 | 921 | 921 | 690 | 460 | - | 221 |
| 90 | 32.2 | Q(Btu/h) | 13,245 | 13,245 | 9,934 | 6,622 | - | 4,305 | 12,448 | 12,448 | 9,336 | 6,224 | - | 4,046 | 11,552 | 11,552 | 8,664 | 5,776 | - | 3,754 |
| | | W | 964 | 964 | 723 | 482 | - | 231 | 921 | 921 | 690 | 460 | - | 221 | 885 | 885 | 664 | 443 | - | 212 |
| 85 | 29.4 | Q(Btu/h) | 13,743 | 13,743 | 10,307 | 6,871 | - | 4,466 | 12,946 | 12,946 | 9,710 | 6,473 | - | 4,207 | 12,050 | 12,050 | 9,037 | 6,025 | - | 3,916 |
| | | W | 929 | 929 | 697 | 465 | - | 223 | 885 | 885 | 664 | 443 | - | 212 | 855 | 855 | 641 | 427 | - | 205 |
| 80 | 26.7 | Q(Btu/h) | 14,141 | 14,141 | 10,606 | 7,071 | - | 4,596 | 13,344 | 13,344 | 10,008 | 6,672 | - | 4,337 | 12,548 | 12,548 | 9,411 | 6,274 | - | 4,078 |
| | | W | 894 | 894 | 671 | 447 | - | 214 | 846 | 846 | 635 | 423 | - | 203 | 820 | 820 | 615 | 410 | - | 196 |
| 75 | 23.9 | Q(Btu/h) | 14,639 | 14,639 | 10,979 | 7,320 | - | 4,758 | 13,743 | 13,743 | 10,307 | 6,871 | - | 4,466 | 12,996 | 12,996 | 9,747 | 6,498 | - | 4,224 |
| | | W | 855 | 855 | 641 | 427 | - | 205 | 807 | 807 | 605 | 403 | - | 193 | 788 | 788 | 591 | 394 | - | 189 |
| 70 | 21.1 | Q(Btu/h) | 14,988 | 14,988 | 11,241 | 7,494 | - | 4,871 | 14,041 | 14,041 | 10,531 | 7,021 | - | 4,563 | 13,444 | 13,444 | 10,083 | 6,722 | - | 4,369 |
| | | W | 811 | 811 | 608 | 405 | - | 194 | 772 | 772 | 579 | 386 | - | 185 | 741 | 741 | 556 | 370 | - | 177 |
| 67 | 19.4 | Q(Btu/h) | 15,137 | 15,137 | 11,353 | 7,568 | - | 4,920 | 14,340 | 14,340 | 10,755 | 7,170 | - | 4,661 | 13,743 | 13,743 | 10,307 | 6,871 | - | 4,466 |
| | | W | 772 | 772 | 579 | 386 | - | 185 | 741 | 741 | 556 | 370 | - | 177 | 701 | 701 | 526 | 351 | - | 168 |

* It may not reach the above capacities in low ambient temperatures.

MLZ-KP12NA-U1
SUZ-KA12NA2.MX
2) HEATING

Rated
Q(Btu/h): 15,400
W: 1,300

| Indoor D.B. Outdoor W.B. (°F) (°C) | | | 77°F / 25.0°C | | | | | | 68°F / 20.0°C | | | | | | 59°F / 15.0°C | | | | | |
|--|-------|----------|---------------|--------|--------|-------|-----|-------|---------------|--------|--------|--------|-----|-------|---------------|--------|--------|--------|-----|-------|
| | | | Max | Rated | 75% | 50% | 25% | Min | Max | Rated | 75% | 50% | 25% | Min | Max | Rated | 75% | 50% | 25% | Min |
| 65 | 18.3 | Q(Btu/h) | 21,395 | 19,381 | 14,536 | 9,691 | - | 5,789 | 22,300 | 20,201 | 15,151 | 10,101 | - | 6,034 | 23,059 | 20,328 | 15,246 | 10,164 | - | 6,072 |
| | | W | 1,958 | 1,497 | 1,123 | 749 | - | 311 | 1,898 | 1,451 | 1,088 | 726 | - | 301 | 1,845 | 1,359 | 1,019 | 679 | - | 282 |
| 60 | 15.6 | Q(Btu/h) | 20,292 | 18,382 | 13,787 | 9,191 | - | 5,491 | 21,156 | 19,165 | 14,374 | 9,582 | - | 5,725 | 21,835 | 19,635 | 14,726 | 9,818 | - | 5,865 |
| | | W | 1,935 | 1,480 | 1,110 | 740 | - | 307 | 1,870 | 1,430 | 1,073 | 715 | - | 297 | 1,822 | 1,346 | 1,009 | 673 | - | 279 |
| 55 | 12.8 | Q(Btu/h) | 19,157 | 17,354 | 13,015 | 8,677 | - | 5,184 | 19,992 | 18,111 | 13,583 | 9,055 | - | 5,410 | 20,613 | 18,942 | 14,207 | 9,471 | - | 5,658 |
| | | W | 1,903 | 1,455 | 1,091 | 728 | - | 302 | 1,834 | 1,402 | 1,052 | 701 | - | 291 | 1,786 | 1,333 | 999 | 666 | - | 277 |
| 50 | 10.0 | Q(Btu/h) | 17,993 | 16,299 | 12,224 | 8,150 | - | 4,869 | 18,812 | 17,041 | 12,781 | 8,521 | - | 5,090 | 19,394 | 18,172 | 13,629 | 9,086 | - | 5,428 |
| | | W | 1,861 | 1,423 | 1,067 | 712 | - | 296 | 1,789 | 1,368 | 1,026 | 684 | - | 284 | 1,737 | 1,320 | 990 | 660 | - | 274 |
| 45 | 7.2 | Q(Btu/h) | 16,803 | 15,222 | 11,416 | 7,611 | - | 4,547 | 17,618 | 15,960 | 11,970 | 7,980 | - | 4,767 | 18,178 | 17,402 | 13,052 | 8,701 | - | 5,198 |
| | | W | 1,810 | 1,384 | 1,038 | 692 | - | 287 | 1,734 | 1,326 | 995 | 663 | - | 275 | 1,676 | 1,300 | 975 | 650 | - | 270 |
| 40 | 4.4 | Q(Btu/h) | 15,592 | 14,125 | 10,594 | 7,062 | - | 4,219 | 16,414 | 14,870 | 11,152 | 7,435 | - | 4,442 | 16,964 | 16,940 | 12,705 | 8,470 | - | 5,060 |
| | | W | 1,749 | 1,337 | 1,003 | 669 | - | 278 | 1,671 | 1,278 | 958 | 639 | - | 265 | 1,605 | 1,287 | 965 | 644 | - | 267 |
| 35 | 1.7 | Q(Btu/h) | 14,364 | 13,012 | 9,759 | 6,506 | - | 3,887 | 15,204 | 13,773 | 10,330 | 6,887 | - | 4,114 | 15,755 | 16,016 | 12,012 | 8,008 | - | 4,784 |
| | | W | 1,678 | 1,283 | 963 | 642 | - | 267 | 1,599 | 1,222 | 917 | 611 | - | 254 | 1,524 | 1,261 | 946 | 631 | - | 262 |
| 30 | -1.1 | Q(Btu/h) | 13,122 | 11,887 | 8,915 | 5,944 | - | 3,551 | 13,991 | 12,674 | 9,505 | 6,337 | - | 3,786 | 14,549 | 14,707 | 11,030 | 7,354 | - | 4,393 |
| | | W | 1,598 | 1,222 | 917 | 611 | - | 254 | 1,517 | 1,160 | 870 | 580 | - | 241 | 1,435 | 1,203 | 902 | 601 | - | 250 |
| 25 | -3.9 | Q(Btu/h) | 11,871 | 10,753 | 8,065 | 5,377 | - | 3,212 | 12,778 | 11,575 | 8,681 | 5,787 | - | 3,457 | 13,348 | 14,091 | 10,568 | 7,046 | - | 4,209 |
| | | W | 1,509 | 1,154 | 865 | 577 | - | 240 | 1,427 | 1,091 | 818 | 546 | - | 227 | 1,338 | 1,170 | 878 | 585 | - | 243 |
| 20 | -6.7 | Q(Btu/h) | 10,613 | 9,614 | 7,211 | 4,807 | - | 2,872 | 11,568 | 10,479 | 7,859 | 5,240 | - | 3,130 | 12,152 | 13,090 | 9,818 | 6,545 | - | 3,910 |
| | | W | 1,410 | 1,078 | 808 | 539 | - | 224 | 1,327 | 1,015 | 761 | 508 | - | 211 | 1,234 | 1,099 | 824 | 549 | - | 228 |
| 15 | -9.4 | Q(Btu/h) | 9,354 | 8,473 | 6,355 | 4,237 | - | 2,531 | 10,365 | 9,390 | 7,042 | 4,695 | - | 2,805 | 10,961 | 12,012 | 9,009 | 6,006 | - | 3,588 |
| | | W | 1,301 | 995 | 746 | 497 | - | 207 | 1,219 | 932 | 699 | 466 | - | 194 | 1,125 | 1,027 | 770 | 514 | - | 213 |
| 10 | -12.2 | Q(Btu/h) | 8,096 | 7,334 | 5,501 | 3,667 | - | 2,191 | 9,173 | 8,310 | 6,232 | 4,155 | - | 2,482 | 9,775 | 10,934 | 8,201 | 5,467 | - | 3,266 |
| | | W | 1,183 | 904 | 678 | 452 | - | 188 | 1,102 | 842 | 632 | 421 | - | 175 | 1,012 | 936 | 702 | 468 | - | 194 |
| 5 | -15.0 | Q(Btu/h) | 6,844 | 6,200 | 4,650 | 3,100 | - | 1,852 | 7,994 | 7,242 | 5,431 | 3,621 | - | 2,163 | 8,595 | 9,625 | 7,219 | 4,813 | - | 2,875 |
| | | W | 1,055 | 807 | 605 | 403 | - | 168 | 975 | 746 | 559 | 373 | - | 155 | 895 | 832 | 624 | 416 | - | 173 |
| 0 | -17.8 | Q(Btu/h) | 5,602 | 5,074 | 3,806 | 2,537 | - | 1,516 | 6,833 | 6,190 | 4,642 | 3,095 | - | 1,849 | 7,421 | 7,700 | 5,775 | 3,850 | - | 2,300 |
| | | W | 918 | 702 | 526 | 351 | - | 146 | 840 | 642 | 482 | 321 | - | 133 | 775 | 689 | 517 | 345 | - | 143 |
| -4 | -20.0 | Q(Btu/h) | 4,617 | 4,182 | 3,137 | 2,091 | - | 1,249 | 5,918 | 5,361 | 4,021 | 2,680 | - | 1,601 | 6,487 | 7,700 | 5,775 | 3,850 | - | 2,300 |
| | | W | 801 | 613 | 459 | 306 | - | 127 | 725 | 554 | 416 | 277 | - | 115 | 678 | 689 | 517 | 345 | - | 143 |

* Above data is for heating operation without any frost.



mitsubishi electric corporation

HEAD OFFICE : TOKYO BUILDING, 2-7-3, MARUNOUCHI, CHIYODA-KU, TOKYO 100-8310, JAPAN
