

**PLA-A24EA7 & PUZ-A24NHA7-BS**  
**24,000 BTU/H 3' X 3' CEILING CASSETTE**  
**24,000 BTU/H HEAT PUMP UNIVERSAL OUTDOOR**



Job Name:

System Reference:

Date:



Indoor Unit.....PLA-A24EA7

Outdoor Unit.....PUZ-A24NHA7-BS



**INDOOR UNIT FEATURES**

- Space-efficient ductless installation
- Equipped with 3D i-see Sensor® for enhanced comfort and energy efficiency
- Airflow settings for high and low ceiling applications
- Individual vane settings for direct/indirect airflow control or variable airflow patterns
- Knockouts for outside-air intake and branch-duct run
- Filter indicator signal
- Easy-to-clean, washable filter (optional high-efficiency filter available - requires multi-function casement)
- Built-in condensate lift mechanism
- Ideal for retail shops, classrooms, office spaces, conference centers, building lobbies, and more
- Multiple control options available:
  - kumo cloud® smart device app for remote access
  - Third-party interface options
  - Wired or wireless controllers

**OUTDOOR UNIT FEATURES**

- Variable speed INVERTER-driven compressor
- Power receiver pre-charged with refrigerant volume for piping length up to 70 ft
- Low ambient cooling down to 0°F providing 100% capacity
- 24-hour continuous operation (cooling mode)
- High pressure protection
- Fast restart
- Superior energy and operational efficiency

# SPECIFICATIONS: PLA-A24EA7 & PUZ-A24NHA7-BS

|   |  |                     |   |
|---|--|---------------------|---|
| Cooling at 95°F <sup>1</sup>            | Maximum Capacity                             | BTU/H               | 24,000  |
|   | Rated Capacity                               | BTU/H               | 24,000  |
|   | Minimum Capacity                             | BTU/H               | 10,000  |
|   | Maximum Power Input                          | W                   | 1,670   |
|   | Rated Power Input                            | W                   | 1,670   |
|   | Moisture Removal                             | Pints/h             | 3.0   |
|   | Sensible Heat Factor                         |                     | 0.86  |
| Heating at 47°F <sup>2</sup>            | Power Factor [208V / 230V]                   | %                   | 94.3 / 94.3   |
|   | Maximum Capacity                             | BTU/H               | 29,000  |
|   | Rated Capacity                               | BTU/H               | 26,000  |
|   | Minimum Capacity                             | BTU/H               | 9,000   |
|   | Maximum Power Input                          | W                   | 2,070   |
|   | Rated Power Input                            | W                   | 1,750   |
| Heating at 17°F <sup>3</sup>            | Power Factor [208V / 230V]                   | %                   | 95.1 / 95.1   |
|   | Maximum Capacity                             | BTU/H               | 17,400  |
|   | Rated Capacity                               | BTU/H               | 14,900  |
|   | Maximum Power Input                          | W                   | 1,670   |
| Heating at 5°F <sup>4</sup>             | Rated Power Input                            | W                   | 1,600   |
|   | Maximum Capacity                             | BTU/H               | 13,000  |
| Efficiency                              | Maximum Power Input                          | W                   | 1,400   |
|   | SEER   |                     | 24.2  |
|   | EER <sup>1</sup>                             |                     | 14.3  |
|   | HSPF [IV]                                    |                     | 11.2  |
|   | COP at 47°F <sup>2</sup>                     |                     | 4.35  |
|   | COP at 17°F at Maximum Capacity <sup>3</sup> |                     | 3.06  |
| Electrical                              | COP at 5°F at Maximum Capacity <sup>4</sup>  |                     | 2.72  |
|   | ENERGY STAR® Certified                       |                     | Yes   |
|   | Voltage, Phase, Frequency                    |                     | 208/230, 1, 60  |
|   | Guaranteed Voltage Range                     | V AC                | 198 - 253   |
|   | Voltage: Indoor - Outdoor, S1-S2             | V AC                | 208/230   |
|   | Voltage: Indoor - Outdoor, S2-S3             | V DC                | 24  |
|   | Short-circuit Current Rating [SCCR]          | kA                  | 5   |
|   | Recommended Fuse/Breaker Size (Outdoor)      | A                   | 25  |
|   | Recommended Wire Size [Indoor - Outdoor]     | AWG                 | 14  |
|   | Power Supply                                 |                     | Indoor unit is powered by the outdoor unit  |
| Indoor Unit                             | MCA  | A                   | 1.0   |
|   | Fan Motor Full Load Amperage                 | A                   | 0.49  |
|   | Fan Motor Type                               |                     | DC Motor  |
|   | Airflow Rate at Cooling, Dry                 | CFM                 | 530–640–710–810   |
|   | Airflow Rate at Cooling, Wet                 | CFM                 | 490–600–670–770   |
|   | Airflow Rate at Heating, Dry                 | CFM                 | 530–640–710–810   |
|   | Sound Pressure Level [Cooling]               | dB[A]               | 28–30–33–36   |
|   | Sound Pressure Level [Heating]               | dB[A]               | 28–30–33–36   |
|   | Drain Pipe Size                              | In. [mm]            | 1-1/4 [32]  |
|   | Condensate Lift Mechanism, Maximum Distance  | In. [mm]            | 33-7/16 [849]   |
|   | Coating on Heat Exchanger                    |                     | —   |
|   | External Finish Color                        |                     | White Munsell 6.4Y 8.9/0.4  |
|   | Unit Dimensions                              | W x D x H: In. [mm] | 33-1/16 // 37-13/32 x 33-1/16 // 37-13/32 x 11-3/4 // 1-9/16 [840 // 950 x 840 // 950 x 298 // 40]    |
|   | Package Dimensions                           | W x D x H: In. [mm] | 35-9/16 // 39-6/16 x 34-5/16 // 38-3/16 x 16-9/16 // 4-12/16 [903 // 1,000 x 871 // 970 x 421 // 121] |
|   | Unit Weight                                  | Lbs. [kg]           | 56 // 11 [25 // 5]  |
|   | Package Weight                               | Lbs. [kg]           | 68 [31]   |
| Indoor Unit Operating Temperature Range | Cooling Intake Air Temp [Maximum / Minimum]* | °F                  | 90 DB, 72 WB / 66 DB, 61 WB   |
|   | Heating Intake Air Temp [Maximum / Minimum]  | °F                  | 77 DB / 59 DB   |

## NOTES:

AHRI Rated Conditions

(Rated data is determined at a fixed compressor speed)

<sup>1</sup>Cooling (Indoor // Outdoor)

<sup>2</sup>Heating at 47°F (Indoor // Outdoor)

<sup>3</sup>Heating at 17°F (Indoor // Outdoor)

°F

°F

°F

80 DB, 67 WB // 95 DB, 75 WB

70 DB, 60 WB // 47 DB, 43 WB

70 DB, 60 WB // 17 DB, 15 WB

\*Indoor/Outdoor Unit Operating Temperature Range (Cooling Air Temp [Maximum / Minimum]):

• Applications should be restricted to comfort cooling only; equipment cooling applications are not recommended for low ambient temperature conditions.

» Wind baffles required to operate below 23°F DB in cooling mode.

» Heat pump system with wind baffle: 0°F - 115°F.

» Refer to wind baffle documentation for further information.

\*\*Outdoor Unit Operating Temperature Range (Cooling Thermal Lock-out / Re-start Temperatures; Heating Thermal Lock-out / Re-start Temperatures):

• System cuts out in heating mode to avoid thermistor error and automatically restarts at these temperatures.

## SPECIFICATIONS: PLA-A24EA7 & PUZ-A24NHA7-BS

|  |  |                     |  |
|--|--|---------------------|--|
| Outdoor Unit                             | MCA  | A                   | 19.0   |
|  | MOCP   | A                   | 26   |
|  | Fan Motor Full Load Amperage                               | A                   | 0.4  |
|  | Fan Motor Output   | W                   | 86   |
|  | Airflow Rate [Cooling / Heating]                           | CFM                 | 1940 / 1940  |
|  | Refrigerant Control  |                     | LEV  |
|  | Defrost Method   |                     | Reverse Cycle  |
|  | Coating on Heat Exchanger                                  |                     | Blue Fin Coating (BS Model only)                         |
|  | Sound Pressure Level, Cooling <sup>1</sup>                 | dB(A)               | 47   |
|  | Sound Pressure Level, Heating <sup>2</sup>                 | dB(A)               | 48   |
|  | Compressor Type  |                     | INVERTER-driven twin rotary                              |
|  | Compressor Model   |                     | SNB172FVHM1  |
|  | Compressor Rated Load Amps                                 | A                   | 7  |
|  | Compressor Locked Rotor Amps                               | A                   | 11.0   |
|  | Compressor Oil [Type // Charge]                            | oz.                 | FV50S // 23  |
|  | External Finish Color                                      |                     | Ivory Munsell 3Y 7.8/1.1                                 |
|  | Base Pan Heater  |                     | N/A  |
|  | Unit Dimensions  | W x D x H: In. [mm] | 37-13/32 x 13 (+1-3/16) x 37-1/8 [950 x 330 (+30) x 943] |
|  | Package Dimensions   | W x D x H: In. [mm] | 40-15/16 x 17-11/16 x 40-11/16 [1040 x 450 x 1033]       |
|  | Unit Weight  | Lbs. [kg]           | 153 [69]   |
|  | Package Weight   | Lbs. [kg]           | 179 [81]   |
| Outdoor Unit Operating Temperature Range | Cooling Air Temp [Maximum / Minimum]*                      | °F                  | 115 DB / 0 DB  |
|  | Heating Air Temp [Maximum / Minimum]                       | °F                  | 70 DB, 59 WB / -4 DB, -4 WB                              |
|  | Heating Thermal Lock-out / Re-start Temperatures**         | °F                  | -8 / -4  |
| Refrigerant                              | Maximum Charge Quantity                                    | Lbs, oz             | 7.0, 11.0  |
|  | Initial Charge Quantity                                    | Ft. [m]             | 70.0 [20.0]  |
|  | Additional Refrigerant Charge Per Additional Piping Length | oz./Ft. [g/m]       | 0.7 [50]   |
| Piping                                   | Gas Pipe Size O.D. [Flared]                                | In.[mm]             | 5/8 [15.88]  |
|  | Liquid Pipe Size O.D. [Flared]                             | In.[mm]             | 3/8 [9.52]   |
|  | Maximum Piping Length                                      | Ft. [m]             | 165 [50]   |
|  | Maximum Height Difference                                  | Ft. [m]             | 100 [30]   |
|  | Maximum Number of Bends                                    |                     | 15   |

### NOTES:

AHRI Rated Conditions

(Rated data is determined at a fixed compressor speed)

<sup>1</sup>Cooling (Indoor // Outdoor)

°F 80 DB, 67 WB // 95 DB, 75 WB

<sup>2</sup>Heating at 47°F (Indoor // Outdoor)

°F 70 DB, 60 WB // 47 DB, 43 WB

<sup>3</sup>Heating at 17°F (Indoor // Outdoor)

°F 70 DB, 60 WB // 17 DB, 15 WB

\*Indoor/Outdoor Unit Operating Temperature Range (Cooling Air Temp [Maximum / Minimum]):

- Applications should be restricted to comfort cooling only; equipment cooling applications are not recommended for low ambient temperature conditions.
  - » Wind baffles required to operate below 23°F DB in cooling mode.
  - » Heat pump system with wind baffle: 0°F - 115°F.
  - » Refer to wind baffle documentation for further information.

\*\*Outdoor Unit Operating Temperature Range (Cooling Thermal Lock-out / Re-start Temperatures; Heating Thermal Lock-out / Re-start Temperatures):

- System cuts out in heating mode to avoid thermistor error and automatically restarts at these temperatures.

## INDOOR UNIT ACCESSORIES: PLA-A24EA7

|                            |   |                   |
|----------------------------|---|-------------------|
| Control Interface          | 3-Pin Connector   | PAC-715AD         |
|                            | BACnet® and Modbus® Interface   | PAC-UKPRC001-CN-1 |
|                            | CN24 Relay Kit  | CN24RELAY-KIT-CM3 |
|                            | IT Extender   | PAC-WHS01IE-E     |
|                            | kumo station® for kumo cloud®   | PAC-WHS01HC-E     |
|                            | Lockdown bracket for remote controller  | RCMKP1CB          |
|                            | Remote Operation Adapter†   | PAC-SF40RM-E      |
|                            | Thermostat Interface  | PAC-US444CN-1     |
|                            | Thermostat Interface  | PAC-US445CN-1     |
|                            | USNAP Adapter   | PAC-WHS01UP-E     |
|                            | Wireless Interface for kumo cloud®  | PAC-USWHS002-WF-2 |
| Remote Sensor              | Flush Mount Remote Temperature Sensor   | PAC-USSEN002-FM-1 |
|                            | Flush Mount Temperature Sensor  | PAC-USSEN001-FM-1 |
|                            | Remote Temperature Sensor   | PAC-SE41TS-E      |
|                            | Wireless temperature and humidity sensor for kumo cloud®                                    | PAC-USWHS003-TH-1 |
| Wired Remote Controller    | Airzone ZBS Wired Blueface Principal Controller White                                       | AZZBSBLUEFACECB   |
|                            | Airzone ZBS Wired Lite Controller White   | AZZBSLITECB       |
|                            | Airzone ZBS Wired Think Controller White  | AZZBSTHINKCB      |
|                            | Airzone ZBS Wireless Lite Controller White  | AZZBSLITERB       |
|                            | Airzone ZBS Wireless Think Controller White   | AZZBSTHINKRB      |
|                            | Deluxe Wired MA Remote Controller†  | PAR-40MAAU        |
|                            | Simple MA Remote Controller†  | PAC-YT53CRAU-J    |
|                            | Touch MA Controller†  | PAR-CT01MAU-SB    |
| Wireless Remote Controller | kumo touch™ RedLINK™ Wireless Controller  | MHK2              |
|                            | Wireless MA Receiver  | PAR-FA32MA-W      |
|                            | Wireless MA Remote Controller   | PAR-FL32MA-E      |
|                            | Wireless Remote Controller  | PAR-SL101A-E      |
|                            | Wireless Signal Receiver Panel  | PAR-SR4LU-E       |
| Casement                   | Multi-function Casement   | PAC-SJ41TM-E      |
| Condensate                 | Blue Diamond (Advanced) Mini Condensate Pump w/ Reservoir & Sensor (208/230V) [recommended] | X87-721           |
|                            | Blue Diamond (MegaBlue Advanced) Condensate Pump w/ Reservoir & Sensor                      | X87-835           |
|                            | Blue Diamond Sensor Extension Cable — 15 Ft.  | C13-103           |
|                            | Refco Condensate Pump (100-240 VAC) up to 120,000 BTU/H                                     | COMBI             |
| Disconnect Switch          | (30A/600V/UL) [fits 2" X 4" utility box] - Black  | TAZ-MS303         |
|                            | (30A/600V/UL) [fits 2" X 4" utility box] - White  | TAZ-MS303W        |
| Filter                     | High Efficiency Filter Element**  | PAC-SH59KF-E      |
| i-see Sensor® Panel        | Grille with 3D i-see Sensor® (required)   | PLP-41EAEU        |
| Lineset                    | 10' x 3/8" x 10' x 5/8" Lineset (Twin-Tube Insulation)††                                    | MPLS385812T-10    |
|                            | 100' x 3/8" x 100' x 5/8" Lineset (Twin-Tube Insulation)††                                  | MPLS385812T-100   |
|                            | 15' x 3/8" x 15' x 5/8" Lineset (Twin-Tube Insulation)††                                    | MPLS385812T-15    |
|                            | 30' x 3/8" x 30' x 5/8" Lineset (Twin-Tube Insulation)††                                    | MPLS385812T-30    |
|                            | 50' x 3/8" x 50' x 5/8" Lineset (Twin-Tube Insulation)††                                    | MPLS385812T-50    |
|                            | 65' x 3/8" x 65' x 5/8" Lineset (Twin-Tube Insulation)††                                    | MPLS385812T-65    |
| Shutter Plate              | Shutter Plate   | PAC-SJ37SP-E      |
| Space Panel                | Space Panel   | PAC-SJ38AS-E      |

**NOTES:**

†PAC-SF40RM-E (Unable to use with wireless remote controller)

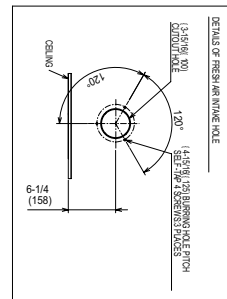
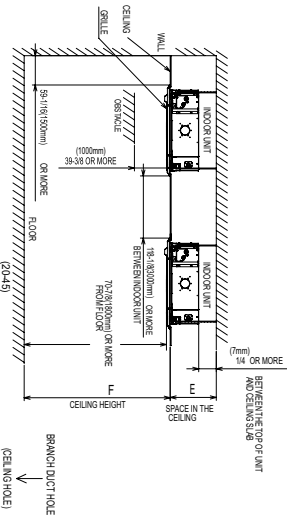
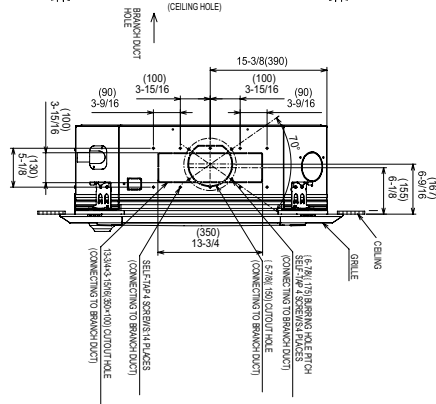
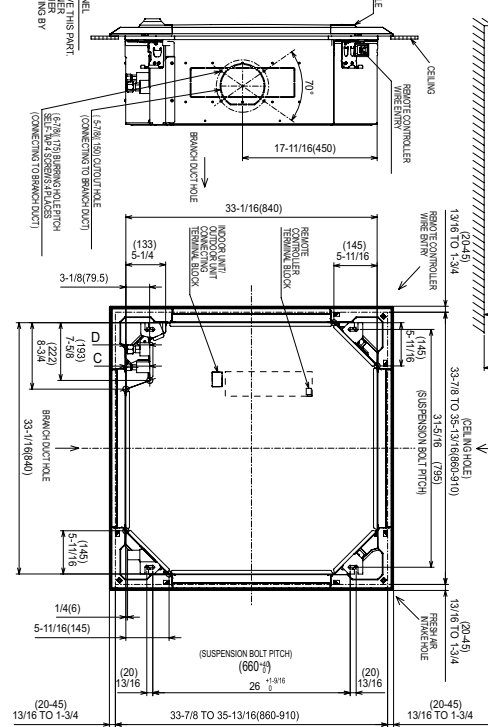
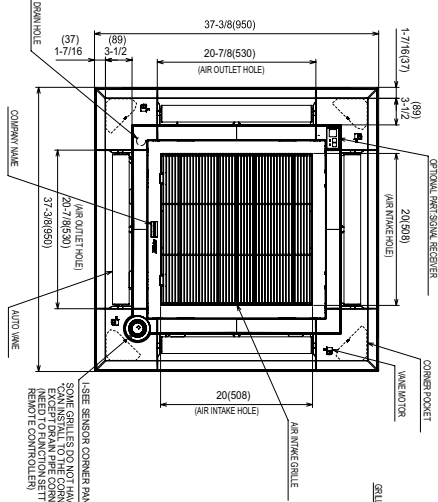
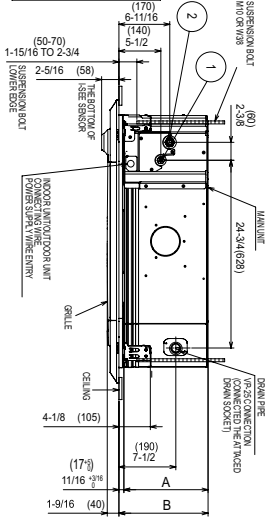
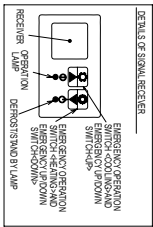
## OUTDOOR UNIT ACCESSORIES: PUZ-A24NHA7-BS

|                       |  |                 |
|-----------------------|--|-----------------|
| Air Outlet Guide      | Air Outlet Guide (1 Piece)   | PAC-SG59SG-E    |
| Centralized Drain Pan | Centralized Drain Pan  | PAC-SG63DP-E    |
|                       | Drain Pan  | PAC-SG64DP-E    |
| Control/Service Tool  | Control/Service Tool   | PAC-SK52ST      |
|                       | M- & P-Series Maintenance Tool Cable Set                               | M21EC0397       |
|                       | USB/UART Conversion Cable (Required for all laptop connection)         | M21EC1397       |
| Distribution pipe     | Twinning Distribution Pipe (50:50) <sup>††</sup>                       | MSDD-50TR-E     |
| Hail Guards           | Hail Guard   | HG-A6           |
| Lineset               | 10' x 3/8" x 10' x 5/8" Lineset (Twin-Tube Insulation) <sup>††</sup>   | MPLS385812T-10  |
|                       | 100' x 3/8" x 100' x 5/8" Lineset (Twin-Tube Insulation) <sup>††</sup> | MPLS385812T-100 |
|                       | 15' x 3/8" x 15' x 5/8" Lineset (Twin-Tube Insulation) <sup>††</sup>   | MPLS385812T-15  |
|                       | 30' x 3/8" x 30' x 5/8" Lineset (Twin-Tube Insulation) <sup>††</sup>   | MPLS385812T-30  |
|                       | 50' x 3/8" x 50' x 5/8" Lineset (Twin-Tube Insulation) <sup>††</sup>   | MPLS385812T-50  |
|                       | 65' x 3/8" x 65' x 5/8" Lineset (Twin-Tube Insulation) <sup>††</sup>   | MPLS385812T-65  |
| M-NET Converter       | M-NET Converter  | PAC-SJ85MA-E    |
|                       | M-NET Converter  | PAC-SJ95MA-E    |
| Mounting Pad          | Condensing Unit Mounting Pad: 24" x 42" x 3"                           | ULTRILITE2      |
| Stand                 | 18" Single Fan Stand   | QSMS1801M       |
|                       | 24" Single Fan Stand   | QSMS2401M       |
|                       | Condenser Wall Bracket   | QSWB2000M-1     |
|                       | Condenser Wall Bracket - Stainless Steel Finish                        | QSWBSS          |
|                       | Outdoor Unit Stand — 12" High  | QSMS1201M       |
| Wind Baffle           | Front Wind Baffle  | WB-PA5          |
|                       | Rear Wind Baffle   | WB-RE5          |
|                       | Side Advanced Wind Baffle  | WB-SD5          |

## INDOOR UNIT DIMENSIONS: PLA-A24EA7

Unit: inch (mm)

| MODELS                | ①   | ②  | A               | B               | C             | D | E                       | F                          |
|-----------------------|---|--|-----------------|-----------------|---------------|---|-------------------------|----------------------------|
| 1218/2420/3642 KBTU/H |   |  |                 |                 |               |   |                         |                            |
| 1218 KBTU/H           | REFRIGERANT PIPES 3/32<br>FLUID CONNECTION 1/4" | REFRIGERANT PIPES 1/2<br>FLUID CONNECTION 1/2" | 9-12<br>(10-16) | 10-3-16<br>(28) | 3/8<br>(37-5) |   | 1/4-1/16(55)<br>OR LESS | 1/37-1/16(5500)<br>OR LESS |
| 2410/3642 KBTU/H      | REFRIGERANT PIPES 3/32<br>FLUID CONNECTION 3/8" | REFRIGERANT PIPES 1/2<br>FLUID CONNECTION 1/2" | 11-1/16<br>(28) | 11-3/16<br>(29) | 3/8<br>(73-5) |   | 1/4-1/16<br>OR LESS     | 1/17-1/16(4500)<br>OR LESS |

[illegible]

# OUTDOOR UNIT DIMENSIONS: PUZ-A24NHA7-BS

Unit: mm<in>

## 1 FREE SPACE (Around the unit)

The diagram below shows a basic example.  
Explanation of particular details are given in the installation manuals etc.



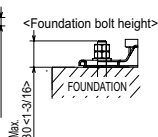
## 2 SERVICE SPACE

Dimensions of space needed for service access are shown in the below diagram.



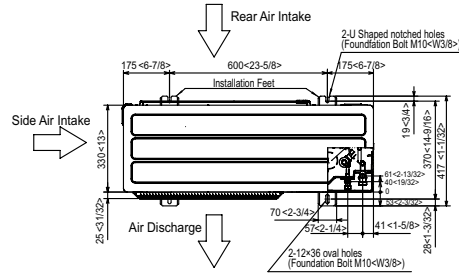
## 3 FOUNDATION BOLTS

Please secure the unit firmly with 4 foundation (M10<W3/8>) bolts. (Bolts and washers must be purchased locally.)



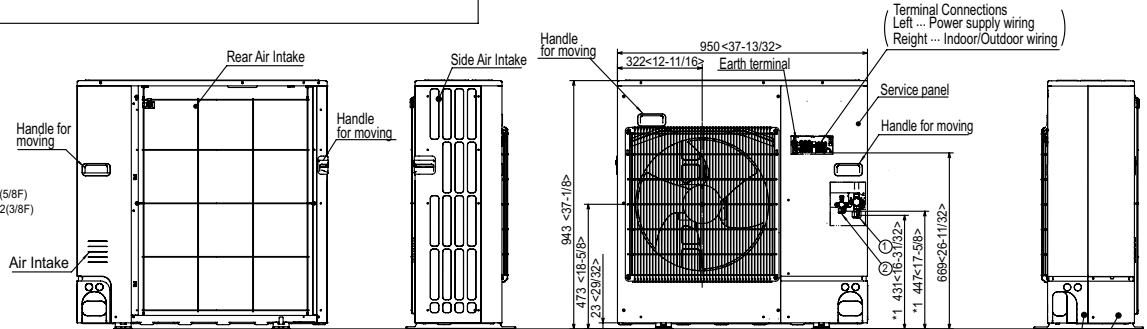
## 4 PIPING-WIRING DIRECTIONS

Piping and wiring connections can be made from 4 directions: FRONT, Right, Rear and Below.



## Example of Notes

- ① --- Refrigerant GAS pipe connection (FLARE) ø15.88(5/8F)
- ② --- Refrigerant LIQUID pipe connection (FLARE) ø9.52(3/8F)
- \*1 --- Indication of STOP VALVE connection location.



## Piping knockout Hole Details



1340 Satellite Boulevard Suwanee, GA 30024  
Toll Free: 800-433-4822 www.mehvac.com

FORM# PLA-A24EA7 & PUZ-A24NHA7-BS - 202211

