

Submittal Data Sheet

15.0 SEER2, Air Conditioner System, 2.5 Ton, Outdoor Unit-GSXH503010A*

Submitted By : Goodman/Amana Unitary Test System

Submitted To : N/A

Tags : AHRI 210626282 Products [GSXH503010A* , CA*FA3626*6A*+TXV, GM9C960603BNA*] , SEER2 15.0 , EER2 12.0

STANDARD FEATURES:

- High-efficiency scroll compressor
- Copper tube/enhanced aluminum fin coil -5mm diameter on 1.5-3.0T
- Fully charged for 15' of tubing length
- Factory-installed filter drier
- Service valves with sweat connections and easy-to-access gauge ports
- Contactor with lug connection
- Ground lug connection
- AHRI Certified, ETL Listed

CABINET FEATURES:

- Removable grille-style top design compliant with UL 60335-2-40
- Venturi for increased velocity of airflow
- Heavy-gauge galvanized-steel cabinet
- Attractive Architectural Gray powder-paint finish with 500-hour salt-spray approval
- Steel louver coil guard
- Rust-resistant coated screws
- Single-panel access to controls with space provided for field-installed accessories
- When properly anchored, meets the 2020 Florida Building Code unit integrity requirements for hurricane-type winds (Anchor bracket kits available.)



At Goodman, we believe in American dependability. Units are designed, engineered and assembled in the U.S.A.



Submittal Data Sheet

15.0 SEER2, Air Conditioner System, 2.5 Ton, Outdoor Unit-GSXH503010A*

Submitted By : Goodman/Amana Unitary Test System

Submitted To : N/A

Tags : AHRI 210626282 Products [GSXH503010A* , CA*FA3626*6A*+TXV, GM9C960603BNA*] , SEER2 15.0 , EER2 12.0

SYSTEM PERFORMANCE

Outdoor Unit Model No.:	GSXH503010A*	Description :	15.0 SEER2, Air Conditioner System, 2.5 Ton Outdoor System
Indoor Unit Model No.:	CAUFA3626B6A*		
TXV/PISTON :	TX3N4		
Furnace Unit Model No.:	GM9C960603BN		
Rated Cooling Conditions:	Outdoor (°F DB/WB):N/A/N/A Indoor (°F DB/WB):N/A/N/A	Rated Heating Conditions:	Outdoor (°F DB/WB):N/A/N/A Indoor (°F DB/WB):N/A/N/A
Rated Cooling Capacity (Btu/hr):	28400	OD Rated Heating Capacity (Btu/hr)	N/A
EER2:	12.0	EER:	12.5
Heating COP:	N/A	SEER2:	15.0
SEER:	15.5	AFUE:	96

OUTDOOR UNIT DETAILS : GSXH503010A*

Power Supply (V/Hz/Ph):	208/230/60/1	Compressor Type:	Scroll
Min. Circuit Amps MCA (A):	17.0	Compressor Stages:	Single Stage
Quantity:	1	Max Overcurrent Protection (MOP) (A):	25
Suction Valve Connection Size (in):	-	Compressor Rated Load Amps :	12.8
Liquid Valve Connection Size (in):	-	Refrigerant Type:	R-410A
Sound Power(High/Med/Low) (dBA):	- / - / -	Holding Refrigerant Charge (oz):	101
Cooling Operation Range (°F DB):	- - -	Additional Charge (oz/ft):	-
Heating Operation Range (°F DB):	N/A	Pre-charge Piping (Length) (ft):	-
Net Weight (lb):	-	Dimensions (HxWxD) (in):	- x - x -
Gross Weight (lb):	216	*Max. Pipe Length (Vertical) (ft):	-
*Max. Pipe Length (Total) (ft):	-		

**Refer to Long Line Set Application TP-107 for lines greater than 80 ft. or vertical elevation changes more than 50 ft. for single stage equipment and 25 ft. for 2-stage equipment.*



At Goodman, we believe in American dependability. Units are designed, engineered and assembled in the U.S.A.



Submittal Data Sheet

15.0 SEER2, Air Conditioner System, 2.5 Ton, Outdoor Unit-GSXH503010A*

Submitted By : Goodman/Amana Unitary Test System

Submitted To : N/A

Tags : AHRI 210626282 Products [GSXH503010A* , CA*FA3626*6A*+TXV, GM9C960603BNA*] , SEER2 15.0 , EER2 12.0

Outdoor (GSXH503010) Dimensional Drawing is not available



At Goodman, we believe in American dependability. Units are designed, engineered and assembled in the U.S.A.



Submittal Data Sheet

15.0 SEER2, Air Conditioner System, 2.5 Ton, Outdoor Unit-GSXH503010A*

Submitted By : Goodman/Amana Unitary Test System

Submitted To : N/A

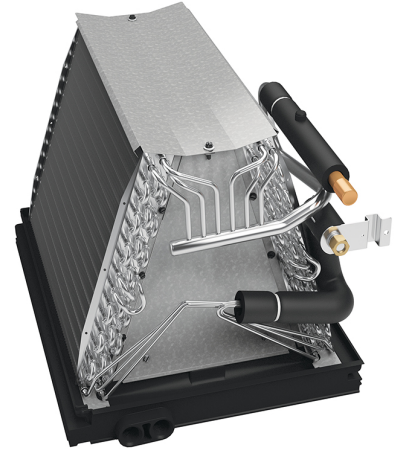
Tags : AHRI 210626282 Products [GSXH503010A* , CA*FA3626*6A*+TXV, GM9C960603BNA*] , SEER2 15.0 , EER2 12.0

STANDARD FEATURES:

- Compact and lightweight all-aluminum evaporator coil with AlumaFin7™ technology
- Optimized for use with R-401A refrigerant
- Check flowrator for cooling and applications
- Rust resistant, thermoplastic drain pans featuring a low water-retention design
- Foil-faced insulation covers the internal casing to reduce cabinet condensation
- Single-piece access panel with tight seal helps to keep conditioned air from escaping
- Seal tight customized suction and liquid grommets for easy installation and removal
- 21" depth for easier attic access
- Vertical application
- AHRI certified
- ETL Listed

CABINET FEATURES:

- **DATA IS NOT AVAILABLE**



At Goodman, we believe in American dependability. Units are designed, engineered and assembled in the U.S.A.



Submittal Data Sheet

15.0 SEER2, Air Conditioner System,2.5 Ton, Outdoor Unit-GSXH503010A*

Submitted By : Goodman/Amana Unitary Test System

Submitted To : N/A

Tags : AHRI 210626282 Products [GSXH503010A* , CA*FA3626*6A*+TXV, GM9C960603BNA*] , SEER2 15.0 , EER2 12.0

INDOOR UNIT DETAILS : CAUFA3626B6A*

Quantity:	1	Configuration:	
Cased VS Uncased:	Uncased	Dimensions (HxWxD) (in) :	21.00 x 16.00 x 20
Suction Connection Size (in) :	7/8	Net Weight (lb):	25
Liquid Connection Size (in) :	3/8	Gross Weight (lb):	26
Condensate Connection (in) :	3/4	Power Voltage (lb):	-
Current Type :	-	Power Phase:	-
Power Frequency :	-	Min Voltage :	-
Max Voltage :	-	MCA :	-
MOP :	-	Electric Heat Range :	-
Indoor Blower FLA :	-	Fan Motor Output :	-



At Goodman, we believe in American dependability. Units are designed, engineered and assembled in the U.S.A.



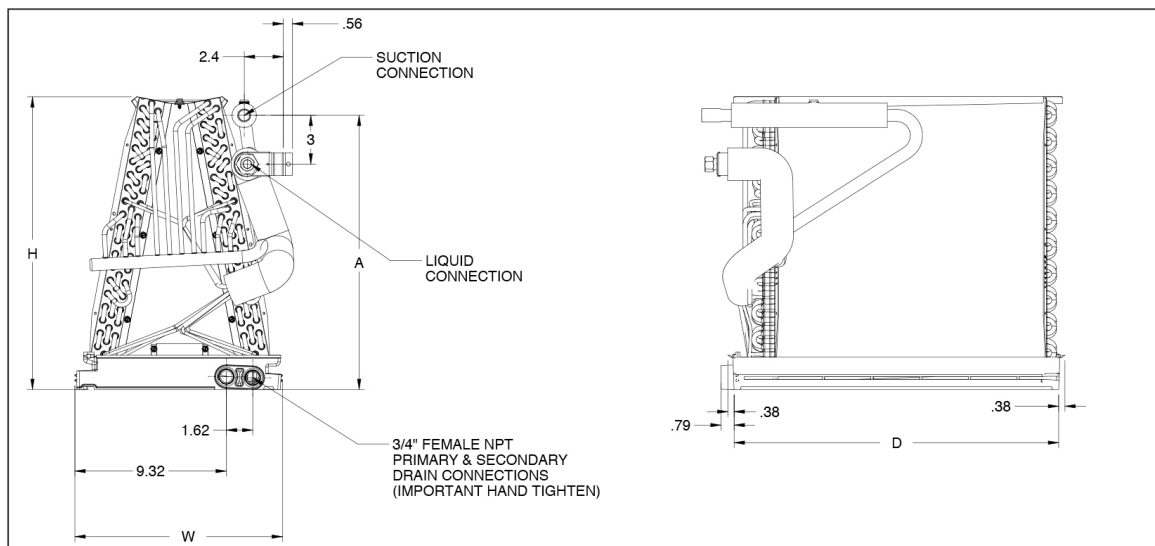
Submittal Data Sheet

15.0 SEER2, Air Conditioner System, 2.5 Ton, Outdoor Unit-GSXH503010A*

Submitted By : Goodman/Amana Unitary Test System

Submitted To : N/A

Tags : AHRI 210626282 Products [GSXH503010A* , CA*FA3626*6A*+TXV, GM9C960603BNA*] , SEER2 15.0 , EER2 12.0



At Goodman, we believe in American dependability. Units are designed, engineered and assembled in the U.S.A.



Submittal Data Sheet

15.0 SEER2, Air Conditioner System, 2.5 Ton, Outdoor Unit-GSXH503010A*

Submitted By : Goodman/Amana Unitary Test System

Submitted To : N/A

Tags : AHRI 210626282 Products [GSXH503010A* , CA*FA3626*6A*+TXV, GM9C960603BNA*] , SEER2 15.0 , EER2 12.0

STANDARD FEATURES:

- DATA IS NOT AVAILABLE

CABINET FEATURES:

- DATA IS NOT AVAILABLE



At Goodman, we believe in American dependability. Units are designed, engineered and assembled in the U.S.A.



Submittal Data Sheet

15.0 SEER2, Air Conditioner System,2.5 Ton, Outdoor Unit-GSXH503010A*

Submitted By : Goodman/Amana Unitary Test System

Submitted To : N/A

Tags : AHRI 210626282 Products [GSXH503010A* , CA*FA3626*6A*+TXV, GM9C960603BNA*] , SEER2 15.0 , EER2 12.0

INDOOR FURNACE UNIT DETAILS : GM9C960603BNA*

Configuration:	Upflow/Horizontal	Blower/Motor Size:	Multi Speed ECM
NOx:	Natural Gas	Communication:	Non-Communicating
Power Supply (V/Hz/Ph):	115/60/1	Temperature Rise Range High Fire (° F):	35-65
Min. Circuit Amps MCA (A):	7.5	Temperature Rise Range Low Fire (° F):	25-55
Max Overcurrent Protection (MOP) (A):	15	High Fire Input Capacity :	60000
AFUE :	96	High Fire Output Capacity :	57600
Vent Diameter (In):	-	Low Fire Input Capacity :	42000
Net Weight (lb):	1105	Low fire output Capacity :	40320
Gross Weight (lb):	120	Dimensions (HxWxD) (in):	33-3/8 x 17-1/2 x 28
Power Voltage (lb):	115	Current Type :	-
Power Phase:	1	Power Frequency :	60
Min Voltage :	-	Max Voltage :	-
MCA :	7.5	MOP :	15
Electric Heat Range :	-	Indoor Blower FLA :	-
Fan Motor Output :	-	Outdoor Fan LRA :	-



At Goodman, we believe in American dependability. Units are designed, engineered and assembled in the U.S.A.



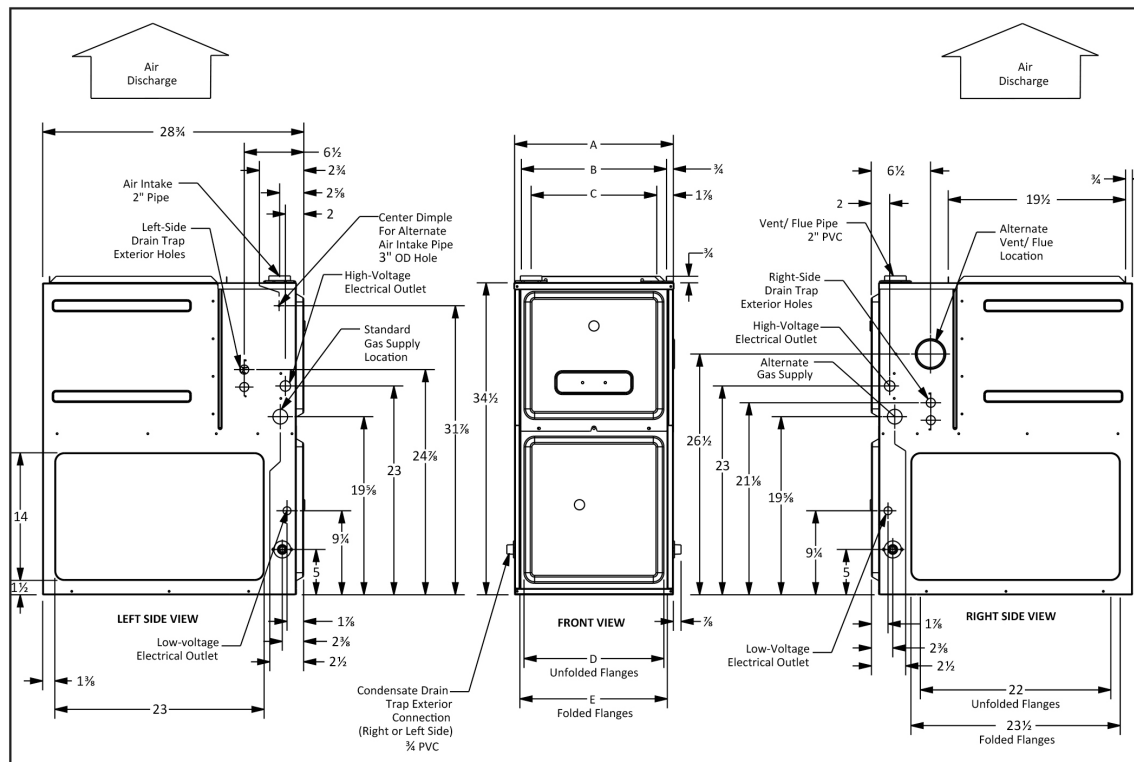
Submittal Data Sheet

15.0 SEER2, Air Conditioner System, 2.5 Ton, Outdoor Unit-GSXH503010A*

Submitted By : Goodman/Amana Unitary Test System

Submitted To : N/A

Tags : AHRI 210626282 Products [GSXH503010A* , CA*FA3626*6A*+TXV, GM9C960603BNA*] , SEER2 15.0 , EER2 12.0



MODEL	AIR DISCHARGE			AIR RETURN	
	A	B	C	D	E
GM9C960303ANA	14"	12 1/2"	10 1/2"	8 5/8"	10 5/8"
GM9C960403ANA	14"	12 1/2"	10 1/2"	8 5/8"	10 5/8"
GM9C960603ANA	14"	12 1/2"	10 1/2"	8 5/8"	10 5/8"
GM9C960603BNA	17 1/2"	16"	13 3/8"	12 1/8"	13 3/8"
GM9C960803BNA	17 1/2"	16"	13 3/8"	12 1/8"	13 3/8"
GM9C960804CNA	21"	19 1/2"	17 3/8"	16"	17 1/2"
GM9C961004CNA	21"	19 1/2"	17 3/8"	16"	17 1/2"
GM9C961005CNA	21"	19 1/2"	17 3/8"	16"	17 1/2"
GM9C961205DNA	24 1/2"	23"	20 5/8"	19 5/8"	20 5/8"

MINIMUM CLEARANCES TO COMBUSTIBLE MATERIALS

POSITION	SIDES	REAR	FRONT	BOTTOM	FLUE	TOP
Upflow	0"	0"	3"	C	0"	1"
Horizontal	6"	0"	3"	C	0"	6"

C = If placed on combustible floor, the floor MUST be wood ONLY.

