

## Submittal Data Sheet

15.0 SEER2, Air Conditioner System, 3.0 Ton, Outdoor Unit-GSXN403610A\*

Submitted By : Goodman/Amana Unitary Test System

Submitted To : N/A

Tags : AHRI 208799871 Products [GSXN403610A\* , CAPTA4230\*4A\* , GMVC961005CNB\*] , SEER2 15.0 , EER2 11.7

### STANDARD FEATURES:

- Energy-efficient compressor
- Copper tube/enhanced aluminum fin coil-5mm diameter on 1.5-4.0 Ton
- Factory-installed filter drier
- Fully charged for 15' of tubing length
- Service valves with sweat connections and easy-to-access gauge ports
- Contactor with lug connection
- Ground lug connection
- AHRI Certified
- ETL Tested

### CABINET FEATURES:

- Removable grille-style top design compliant with UL 60335-2-40
- Venturi for increased velocity of airflow
- Heavy-gauge galvanized-steel cabinet
- Attractive Architectural Gray powder-paint finish with 500-hour salt-spray approval
- Steel louver coil guard
- Rust-resistant coated screws
- Single-panel access to controls with space provided for field-installed accessories
- When properly anchored, meets the 2020 Florida Building Code unit integrity requirements for hurricane-type winds (Anchor bracket kits available.)



At Goodman, we believe in American dependability. Units are designed, engineered and assembled in the U.S.A.



## Submittal Data Sheet

15.0 SEER2, Air Conditioner System, 3.0 Ton, Outdoor Unit-GSXN403610A\*

Submitted By : Goodman/Amana Unitary Test System

Submitted To : N/A

Tags : AHRI 208799871 Products [GSXN403610A\* , CAPTA4230\*4A\* , GMVC961005CNB\*] , SEER2 15.0 , EER2 11.7

### SYSTEM PERFORMANCE

Outdoor Unit Model No.:	GSXN403610A*	Description :	15.0 SEER2, Air Conditioner System, 3.0 Ton Outdoor System
Indoor Unit Model No.:	CAPTA4230A4A*		
TXV/PISTON :	N/A		
Furnace Unit Model No.:	GMVC961005CN		
Rated Cooling Conditions:	Outdoor (°F DB/WB):N/A/N/A Indoor (°F DB/WB):N/A/N/A	Rated Heating Conditions:	Outdoor (°F DB/WB):N/A/N/A Indoor (°F DB/WB):N/A/N/A
Rated Cooling Capacity (Btu/hr):	N/A	OD Rated Heating Capacity (Btu/hr)	N/A
EER2:	11.7	EER:	N/A
Heating COP:	N/A	SEER2:	15.0
SEER:	N/A	AFUE:	96

### OUTDOOR UNIT DETAILS : GSXN403610A\*

Power Supply (V/Hz/Ph):	208/230/60/1	Compressor Type:	-
Min. Circuit Amps MCA (A):	23.3	Compressor Stages:	-
Quantity:	1	Max Overcurrent Protection (MOP) (A):	35
Suction Valve Connection Size (in):	-	Compressor Rated Load Amps :	16.0
Liquid Valve Connection Size (in):	-	Refrigerant Type:	-
Sound Power(High/Med/Low) (dBA):	- / - / -	Holding Refrigerant Charge (oz):	95.6
Cooling Operation Range (°F DB):	- - -	Additional Charge (oz/ft):	-
Heating Operation Range (°F DB):	N/A	Pre-charge Piping (Length) (ft):	-
Net Weight (lb):	210	Dimensions (HxWxD) (in):	35.75 x 35.5 x 35.5
Gross Weight (lb):	212	*Max. Pipe Length (Vertical) (ft):	-
*Max. Pipe Length (Total) (ft):	-		

*\*Refer to Long Line Set Application TP-107 for lines greater than 80 ft. or vertical elevation changes more than 50 ft. for single stage equipment and 25 ft. for 2-stage equipment.*



At Goodman, we believe in American dependability. Units are designed, engineered and assembled in the U.S.A.



## Submittal Data Sheet

15.0 SEER2, Air Conditioner System, 3.0 Ton, Outdoor Unit-GSXN403610A\*

Submitted By : Goodman/Amana Unitary Test System

Submitted To : N/A

Tags : AHRI 208799871 Products [GSXN403610A\* , CAPTA4230\*4A\* , GMVC961005CNB\*] , SEER2 15.0 , EER2 11.7

**Outdoor ( GSXN403610 ) Dimensional Drawing is not available**



At Goodman, we believe in American dependability. Units are designed, engineered and assembled in the U.S.A.



## Submittal Data Sheet

15.0 SEER2, Air Conditioner System, 3.0 Ton, Outdoor Unit-GSXN403610A\*

Submitted By : Goodman/Amana Unitary Test System

Submitted To : N/A

Tags : AHRI 208799871 Products [GSXN403610A\* , CAPTA4230\*4A\* , GMVC961005CNB\*] , SEER2 15.0 , EER2 11.7

### STANDARD FEATURES:

- Compact and lightweight all-aluminum evaporator coil with AlumaFin7™ technology
- Optimized for use with R-401A refrigerant
- Factory-installed thermal expansion valves for cooling applications
- Rust resistant, thermoplastic drain pans featuring a low water-retention design
- Foil-faced insulation covers the internal casing to reduce cabinet condensation
- Single-piece access panel with tight seal helps to keep conditioned air from escaping
- Seal tight customized suction and liquid grommets for easy installation and removal
- 21" depth for easier attic access
- Vertical application
- AHRI certified
- ETL Listed

### CABINET FEATURES:

- **DATA IS NOT AVAILABLE**



At Goodman, we believe in American dependability. Units are designed, engineered and assembled in the U.S.A.





Submittal Data Sheet

15.0 SEER2, Air Conditioner System,3.0 Ton, Outdoor Unit-GSXN403610A\*

Submitted By : Goodman/Amana Unitary Test System

Submitted To : N/A

Tags : AHRI 208799871 Products [GSXN403610A\* , CAPTA4230\*4A\*, GMVC961005CNB\*] , SEER2 15.0 , EER2 11.7

INDOOR UNIT DETAILS : CAPTA4230A4A\*

Quantity:	1	Configuration:	
Cased VS Uncased:	CASED	Dimensions (HxWxD) (in) :	32.50 x 27.00 x 26.00
Suction Connection Size (in) :	7/8	Net Weight (lb):	63
Liquid Connection Size (in) :	3/8	Gross Weight (lb):	64
Condensate Connection (in) :	3/4	Power Voltage (lb):	-
Current Type :	-	Power Phase:	-
Power Frequency :	-	Min Voltage :	-
Max Voltage :	-	MCA :	-
MOP :	-	Electric Heat Range :	-
Indoor Blower FLA :	-	Fan Motor Output :	-



At Goodman, we believe in American dependability. Units are designed, engineered and assembled in the U.S.A.



### Submittal Data Sheet

15.0 SEER2, Air Conditioner System, 3.0 Ton, Outdoor Unit-GSXN403610A\*

Submitted By : Goodman/Amana Unitary Test System

Submitted To : N/A

Tags : AHRI 208799871 Products [GSXN403610A\* , CAPTA4230\*4A\* , GMVC961005CNB\*] , SEER2 15.0 , EER2 11.7

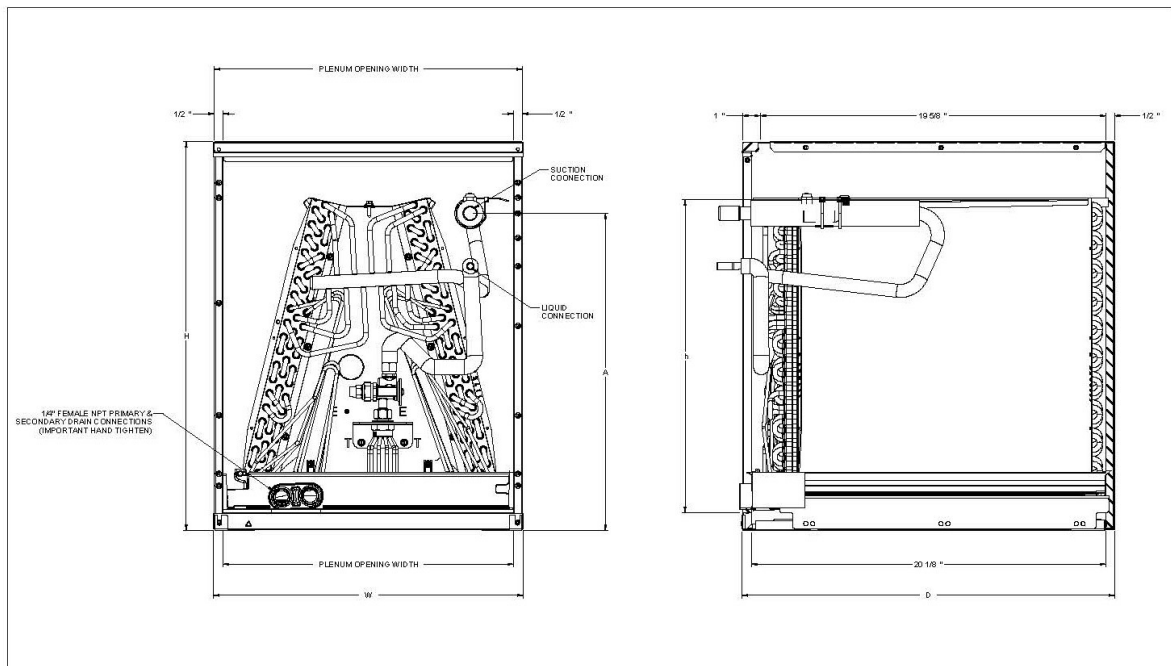
MODEL	CABINET DIMENSIONS			NOMINAL TONS	CONNECTION		SHIP WEIGHT (LBS)
	W	D	H		LIQUID	SUCTION	
CAPTA1818A4	14"	21"	18"	1.5	3/8"	3/4"	36
CAPTA1818B4	17.5"	21"	18"	1.5	3/8"	3/4"	41
CAPTA2422A4	14"	21"	22"	2	3/8"	3/4"	44
CAPTA2422B4	17.5"	21"	22"	2	3/8"	3/4"	48
CAPTA2422C4	21"	21"	22"	2	3/8"	3/4"	53
CAPTA3022A4	14"	21"	22"	2.5	3/8"	3/4"	44
CAPTA3022B4	17.5"	21"	22"	2.5	3/8"	3/4"	48
CAPTA3022C4	21"	21"	22"	2.5	3/8"	3/4"	53
CAPTA3026B4	17.5"	21"	26"	2.5	3/8"	7/8"	50
CAPTA3026C4	21"	21"	26"	2.5	3/8"	7/8"	52
CAPTA3626B4	17.5"	21"	26"	3	3/8"	7/8"	54
CAPTA3626C4	21"	21"	26"	3	3/8"	7/8"	57
CAPTA4230C4	21"	21"	30"	3.5	3/8"	7/8"	63
CAPTA4230D4	24.5"	21"	30"	3.5	3/8"	7/8"	66

<sup>1</sup> (ft<sup>2</sup>)

<sup>2</sup> Shipped with Coil

Note: For a properly matched system and piston sizing information, refer to the piston kit chart of the corresponding outdoor unit.

### DIMENSIONS



At Goodman, we believe in American dependability. Our units are designed, engineered and assembled in the U.S.A.



## Submittal Data Sheet

15.0 SEER2, Air Conditioner System, 3.0 Ton, Outdoor Unit-GSXN403610A\*

Submitted By : Goodman/Amana Unitary Test System

Submitted To : N/A

Tags : AHRI 208799871 Products [GSXN403610A\* , CAPTA4230\*4A\* , GMVC961005CNB\*] , SEER2 15.0 , EER2 11.7

### STANDARD FEATURES:

- Heavy-duty aluminized-steel tubular heat exchanger
- Efficient and quiet variable-speed Blower
- Integrated communicating ComfortBridge™ technology
- Commissioning and diagnostics via on board Bluetooth with the CoolCloud™ phone and tablet application
- Stainless-steel sloped secondary heat exchanger
- Silicon Nitride igniter
- Dual 7-segment display
- Color-coded low-voltage terminals
- Two-Stage gas valve
- All models comply with California 40 ng/J
- AHRI Certified, ETL Listed
- Energy Star
- Furnace control board with self-diagnostics and provisions for electronic air cleaner and 120-volt or 24-volt humidifiers

### CABINET FEATURES:

- Multi-position installation: upflow, horizontal left or right
- Certified for direct vent (2-pipe) or non-direct vent (1 pipe)
- Easy to install top venting with optional side vent
- Convenient left or right connection for gas and electrical service
- Cabinet air leakage (Qleak) less than or equal to 2%
- Fully insulated heat exchanger and blower section
- Bottom or side return air applications
- Heavy-gage steel cabinet with durable finish



At Goodman, we believe in American dependability. Units are designed, engineered and assembled in the U.S.A.



### Submittal Data Sheet

15.0 SEER2, Air Conditioner System,3.0 Ton, Outdoor Unit-GSXN403610A\*

Submitted By : Goodman/Amana Unitary Test System

Submitted To : N/A

Tags : AHRI 208799871 Products [GSXN403610A\* , CAPTA4230\*4A\*, GMVC961005CNB\*] , SEER2 15.0 , EER2 11.7

#### INDOOR FURNACE UNIT DETAILS : GMVC961005CNB\*

Configuration:	Upflow/Horizontal	Blower/Motor Size:	Variable Speed ECM
NOx:	Natural Gas	Communication:	Communicating
Power Supply (V/Hz/Ph):	115/60/1	Temperature Rise Range High Fire (° F):	35-65
Min. Circuit Amps MCA (A):	14.4	Temperature Rise Range Low Fire (° F):	35-65
Max Overcurrent Protection (MOP) (A):	20.0	High Fire Input Capacity :	100000
AFUE :	96	High Fire Output Capacity :	96100
Vent Diameter (In):	2;3	Low Fire Input Capacity :	70000
Net Weight (lb):	-	Low fire output Capacity :	67270
Gross Weight (lb):	144	Dimensions (HxWxD) (in):	34-1/2 x 21 x 29
Power Voltage (lb):	115	Current Type :	AC
Power Phase:	1	Power Frequency :	60
Min Voltage :	-	Max Voltage :	-
MCA :	14.4	MOP :	20.0
Electric Heat Range :	-	Indoor Blower FLA :	-
Fan Motor Output :	-	Outdoor Fan LRA :	-



At Goodman, we believe in American dependability. Units are designed, engineered and assembled in the U.S.A.



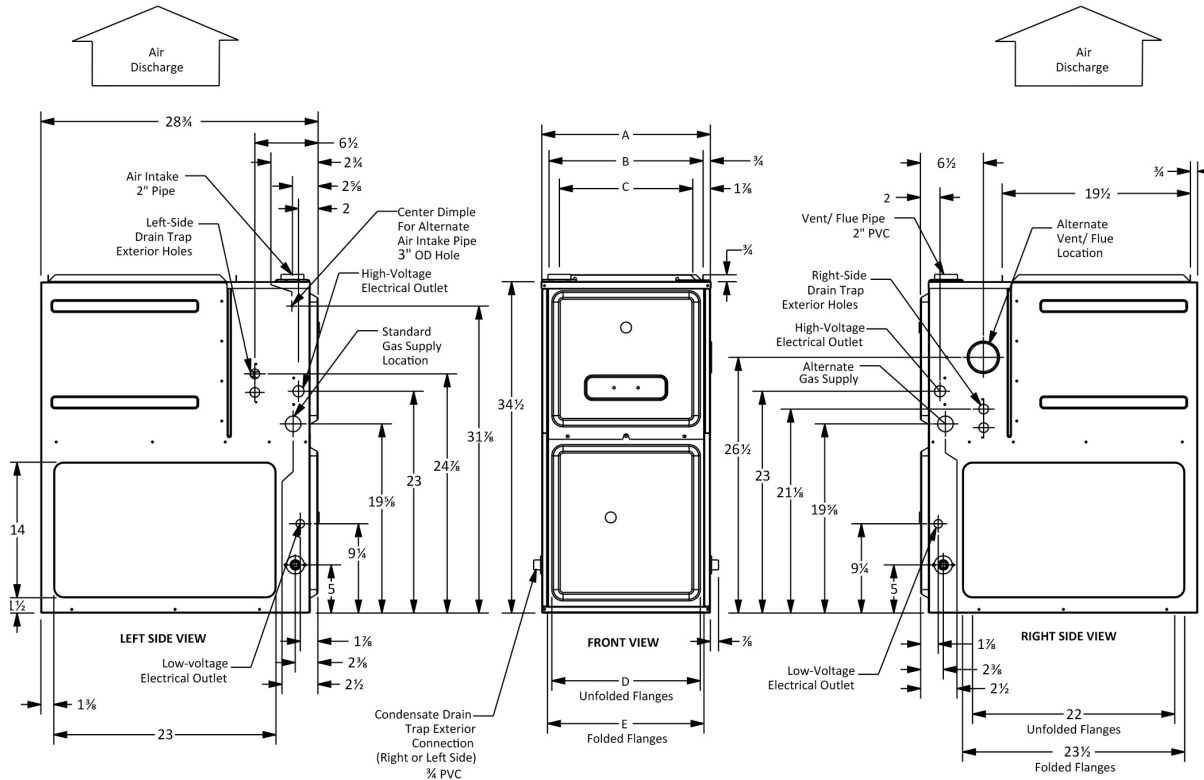
## Submittal Data Sheet

15.0 SEER2, Air Conditioner System, 3.0 Ton, Outdoor Unit-GSXN403610A\*

Submitted By : Goodman/Amana Unitary Test System

Submitted To : N/A

Tags : AHRI 208799871 Products [GSXN403610A\* , CAPTA4230\*4A\* , GMVC961005CNB\*] , SEER2 15.0 , EER2 11.7



At Goodman, we believe in American dependability. Units are designed, engineered and assembled in the U.S.A.

