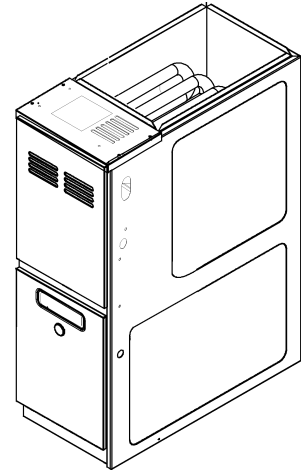


GMES 80% High Efficient Furnace

GMES800403ANAA
GMES800403AXAA
GMES800603ANAA
GMES800603AXAA
GMES800603BNAA
GMES800603BXAA
GMES800604BNAA
GMES800604BXAA
GMES800803BNAA
GMES800803BXAA
GMES800804BNAA
GMES800804BXAA
GMES800804CNAA
GMES800804CXAA
GMES800805CNAA
GMES800805CXAA
GMES801005CNAA
GMES801005CXAA
GMES801205DNAA



This manual is to be used by qualified technicians only.

Important Information

Index

Functional Parts List	3
Illustration and Parts	4 - 9

Views shown are for parts illustrations only, not servicing procedures

Text Codes:

AR - As Required

NA - Not Available

NS - Not Shown

00000000 - See Note

QTY - Quantity Example (QTY 3) (If Quantity not shown, Quantity = 1)

M - Model Example (M1) (If M Code not shown, then part is used on all Models)

Expanded Model Nomenclature:

Example M1 - Model#1 M2 - Model#2 M3 - Model#3

Goodman Manufacturing Company, L.P. is not responsible for personal injury or property damage resulting from improper service. Review all service information before beginning repairs.

Warranty service must be performed by an authorized technician, using authorized factory parts. If service is required after the warranty expires, Goodman Manufacturing Company, L.P. also recommends contacting an authorized technician and using authorized factory parts.

Goodman Manufacturing Company, L.P. reserves the right to discontinue, or change at any time, specifications or designs without notice or without incurring obligations.

For assistance within the U.S.A. contact:

Homeowner Support

Goodman Manufacturing Company, L.P.

19001 Kermier Road

Waller, Texas 77484

877-254-4729-Telephone

713-863-2382-Facsimile

For assistance outside the U.S.A. contact:

International Division

Goodman Manufacturing Company, L.P.

19001 Kermier Road

Waller, Texas 77484

713-861-2500-Telephone

713-863-2382-Facsimile

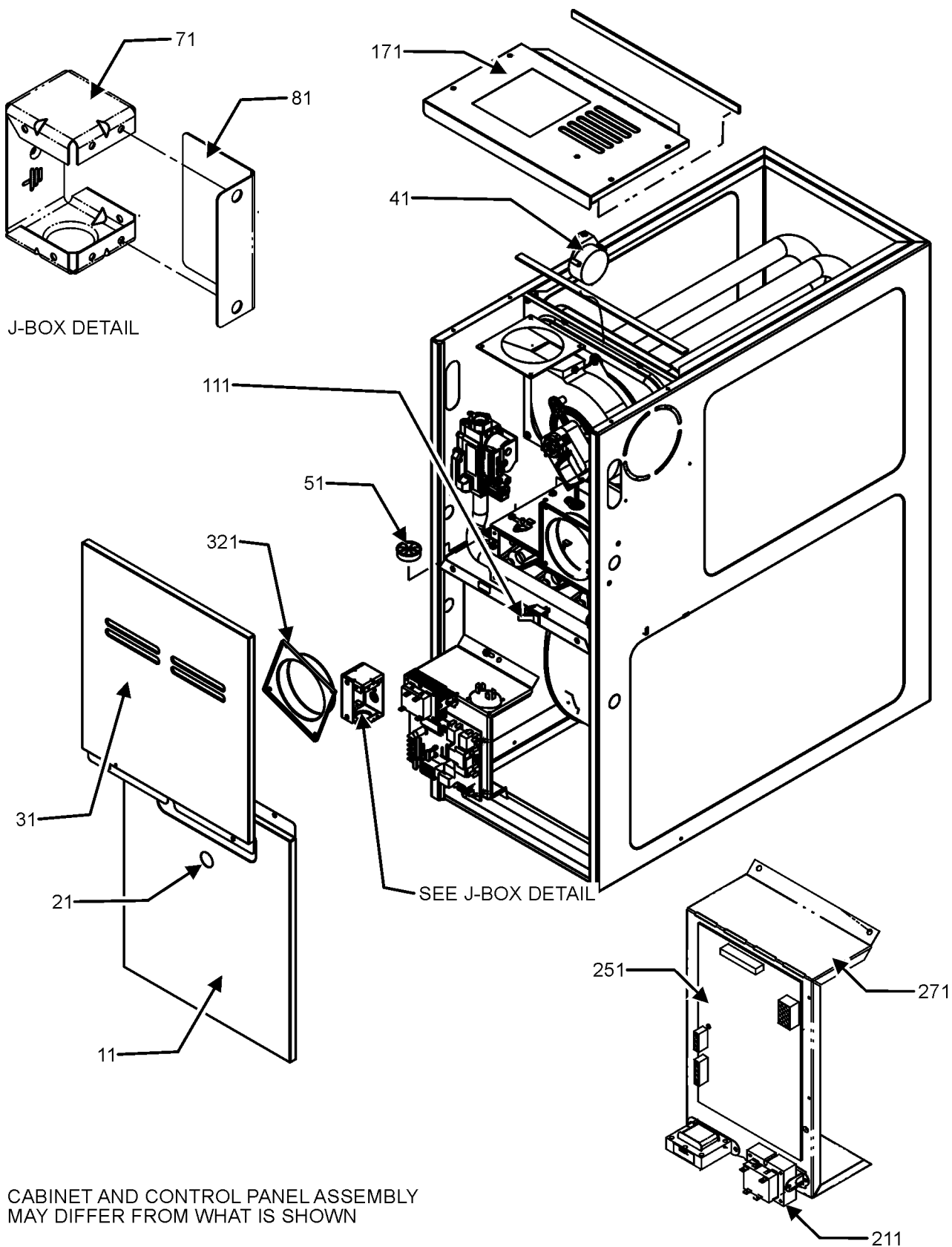
Functional Parts

Part

No: Description:

		Expanded Model Nomenclature
20162904	*PRIMARY LIMIT-TEMPERATURE CONTROL (M3, M4, M5, M6, M7, M8, M9, M10, M11, M12, M17, M18) *Refer to service bulletin SF-054	M1 - GMES800403ANAA M2 - GMES800403AXAA M3 - GMES800603ANAA M4 - GMES800603AXAA M5 - GMES800603BNAA M6 - GMES800603BXAA M7 - GMES800604BNAA M8 - GMES800604BXAA M9 - GMES800803BNAA M10 - GMES800803BXAA M11 - GMES800804BNAA M12 - GMES800804BXAA M13 - GMES800804CNAA M14 - GMES800804CXAA M15 - GMES800805CNAA M16 - GMES800805CXAA M17 - GMES801005CNAA M18 - GMES801005CXAA M19 - GMES801205DNAA
0130F00038	AUX LIMIT - LT BLUE 120°	
B1368034	BLOWER WHEEL 10 X 6 (M1, M2, M3, M4)	
PCBBF145	CIRCUIT BOARD	
0130F00010	FLAME SENSOR	
0151M00037	GAS VALVE	
10690402	INTERLOCK SWITCH	
20162903	LIMIT (M13, M14, M15, M16, M19)	
20162901	LIMIT (M1, M2)	
10123529	MANUAL RESET R.O.S. LIMIT (QTY 2)	
0131F00112	MOTOR X-13, BLOWER 1/2 H.P. (M1, M2, M3, M4, M5, M6, M9, M10)	
0131F00114	MOTOR X-13, BLOWER 1H.P. (M19)	
0131F00113	MOTOR X-13, BLOWER 3/4 H.P. (M7, M8, M11, M12, M13, M14, M15, M16, M17, M18)	
0131F00122	MOTOR, PROGRAM-X13 (M5, M6)	
0131F00121	MOTOR, PROGRAM-X13 (M3, M4)	
0131F00126	MOTOR, PROGRAM-X13 (M13, M14)	
0131F00129	MOTOR, PROGRAM-X13 (M19)	
0131F00120	MOTOR, PROGRAM-X13 (M1, M2)	
0131F00127	MOTOR, PROGRAM-X13 (M15, M16)	
0131F00125	MOTOR, PROGRAM-X13 (M11, M12)	
0131F00124	MOTOR, PROGRAM-X13 (M9, M10)	
0131F00123	MOTOR, PROGRAM-X13 (M7, M8)	
0131F00128	MOTOR, PROGRAM-X13 (M17, M18)	
0131M00002P	MOTOR, VENT 80+	
0130F00008	SINI IGNITOR	
0130F00505	SWITCH, PRESSURE (M1, M2, M9, M10, M11, M12, M17, M18)	
0130F00507	SWITCH, PRESSURE (M19)	
0130F00506	SWITCH, PRESSURE (M3, M4, M5, M6, M7, M8, M13, M14, M15, M16)	
0130M00140	TRANSFORMER,(120V TO 24V,40VA,	
0150M00042	WHEEL, BLOWER (10 X 10) (M13, M14, M15, M16, M17, M18)	
0150M00043	WHEEL, BLOWER (10 X 8) (M5, M6, M7, M8, M9, M10, M11, M12)	
0150M00043	WHEEL, BLOWER (10 X 8) (M5, M6, M7, M8, M9, M10, M11, M12)	
SPECIAL PARTS		
0161F00007	NAMEPLATE, GOODMAN	

Cabinet Assembly



CABINET AND CONTROL PANEL ASSEMBLY
MAY DIFFER FROM WHAT IS SHOWN

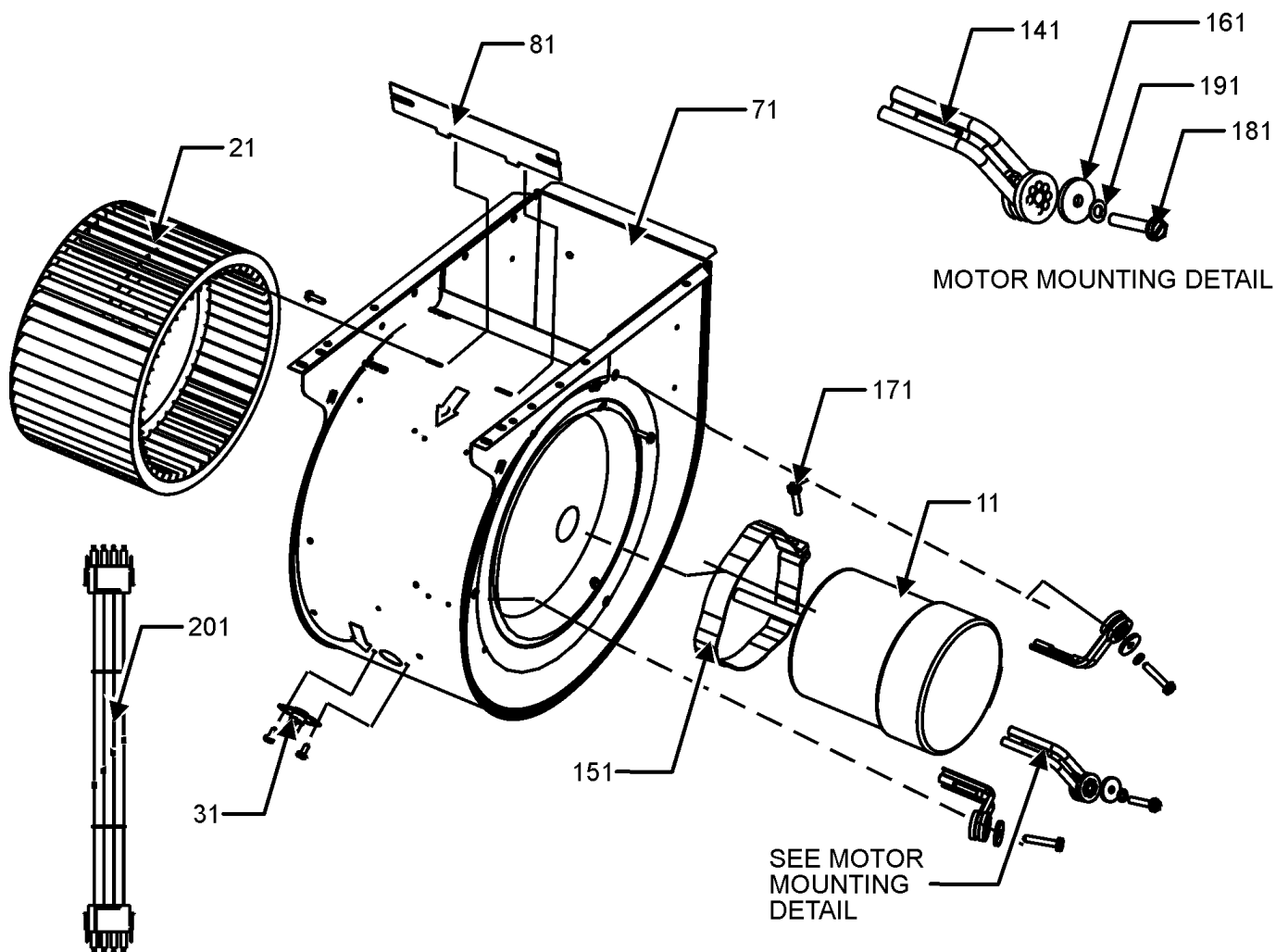
CONTROL PANEL ASSEMBLY

Cabinet Assembly

Ref. Part No: No:	Description:	Ref. Part No: No:	Description:
Image 1:		Expanded Model Nomenclature	
11	0121F00122DG	DOOR, BLOWER, 14"-PAINTED (M1, M2, M3, M4)	M1 - GMES800403ANAA
11	0121F00123DG	DOOR, BLOWER, 17.5"-PAINTED (M5, M6, M7, M8, M9, M10, M11, M12)	M2 - GMES800403AXAA
11	0121F00124DG	DOOR, BLOWER, 21"-PAINTED (M13, M14, M15, M16, M17, M18)	M3 - GMES800603ANAA
11	0121F00125DG	DOOR, BLOWER, 24.5"-PAINTED (M19)	M4 - GMES800603AXAA
21	B1392139	VIEW PORT BUSHING-BLOWER DOOR	M5 - GMES800603BNAA
31	0121F00118DG	DOOR CTRL ACCESS, 14"-PAINTED (M1, M2, M3, M4)	M6 - GMES800603BXAA
31	0121F00120DG	DOOR CTRL ACCESS, 21"-PAINTED (M13, M14, M15, M16, M17, M18)	M7 - GMES800604BNAA
31	0121F00119DG	DOOR CTRL ACCESS, 17.5"-PAINTED (M5, M6, M7, M8, M9, M10, M11, M12)	M8 - GMES800604BXAA
31	0121F00121DG	DOOR CTRL ACCESS, 24.5"-PAINTED (M19)	M9 - GMES800803BNAA
41	0130F00505	SWITCH, PRESSURE (M1, M2, M9, M10, M11, M12, M17, M18)	M10 - GMES800803BXAA
41	0130F00506	SWITCH, PRESSURE (M3, M4, M5, M6, M7, M8, M13, M14, M15, M16)	M11 - GMES800804BNAA
41	0130F00507	SWITCH, PRESSURE (M19)	M12 - GMES800804BXAA
51	B1392147	UNIVERSAL BUSHING WITH SLICE	M13 - GMES800804CNAA
71	4014502	J-BOX	M14 - GMES800804CXAA
81	4015502	COVER, J-BOX	M15 - GMES800805CNAA
111	10690402	INTERLOCK SWITCH	M16 - GMES800805CXAA
171	0121F00141DG	TOP, FURNACE 14"-PAINTED (M1, M2, M3, M4)	M17 - GMES801005CNAA
171	0121F00142DG	TOP, FURNACE 17.5"-PAINTED (M5, M6, M7, M8, M9, M10, M11, M12)	M18 - GMES801005CXAA
171	0121F00143DG	TOP, FURNACE 21"-PAINTED (M13, M14, M15, M16, M17, M18)	M19 - GMES801205DNAA
171	0121F00463DG	TOP, FURNACE 24.5" PAINTED (M19)	
211	0130M00140	TRANSFORMER, (120V TO 24V, 40VA,	
251	PCBBF145	CIRCUIT BOARD	
271	1815817	CNTRL MT PNL	
321	4023500	CHIMNEY TRANSITION TOP	
NS	0161F00007	NAMEPLATE, GOODMAN	

Blower Assembly

BLOWER ASSEMBLY

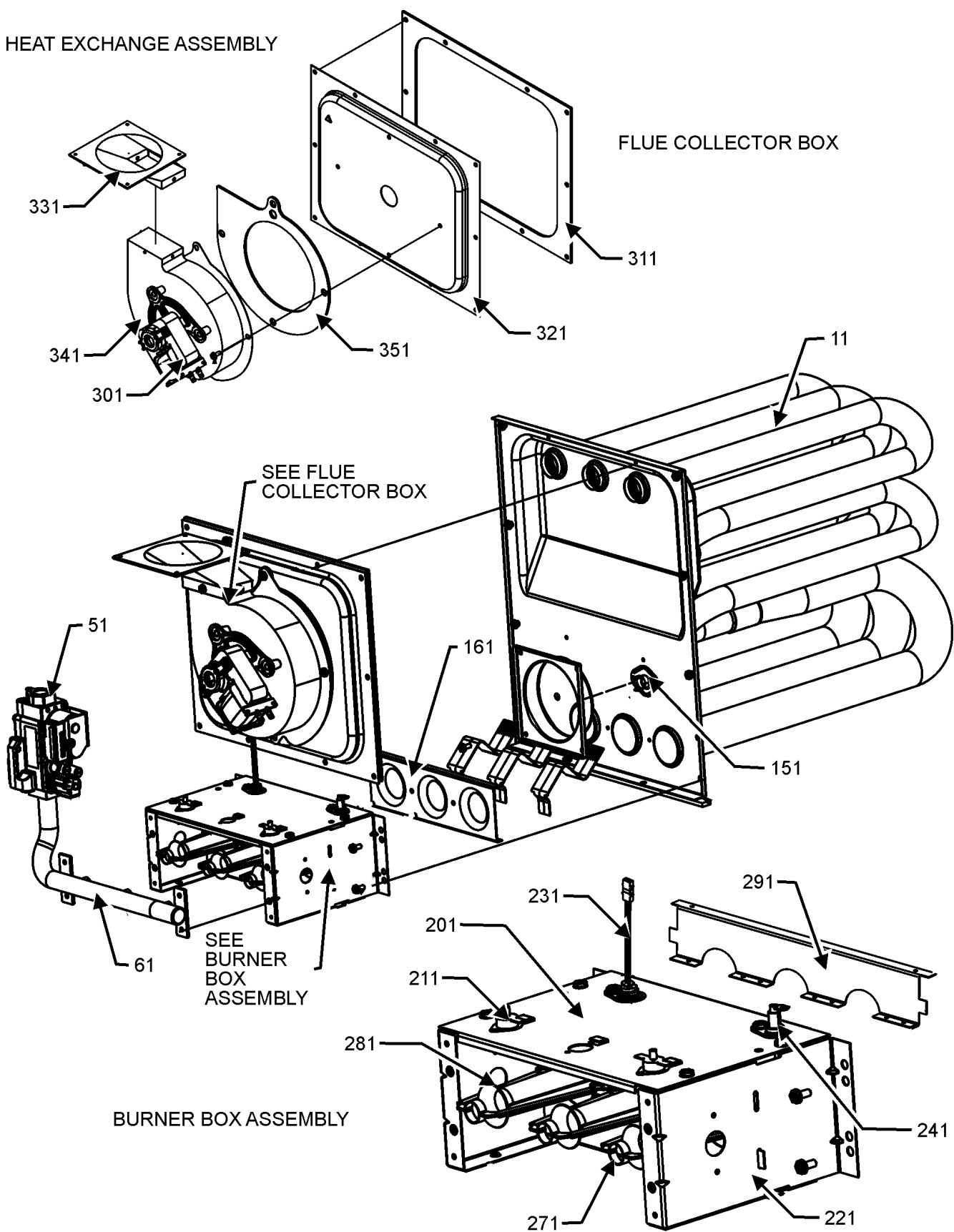


Blower Assembly

Ref. Part No: No:	Description:	Ref. Part No: No:	Description:
Image 1:		Expanded Model Nomenclature	
11	0131F00112	MOTOR X-13, BLOWER 1/2 H.P. (M1, M2, M3, M4, M5, M6, M9, M10)	M1 - GMES800403ANAA
11	0131F00114	MOTOR X-13, BLOWER 1H.P. (M19)	M2 - GMES800403AXAA
11	0131F00113	MOTOR X-13, BLOWER 3/4 H.P. (M7, M8, M11, M12, M13, M14, M15, M16, M17, M18)	M3 - GMES800603ANAA
21	B1368034	BLOWER WHEEL 10 X 6 (M1, M2, M3, M4)	M4 - GMES800603AXAA
21	0150M00042	WHEEL, BLOWER (10 X 10) (M13, M14, M15, M16, M17, M18)	M5 - GMES800603BNAA
21	0150M00043	WHEEL, BLOWER (10 X 8) (M5, M6, M7, M8, M9, M10, M11, M12)	M6 - GMES800603BXAA
21	0150M00043	WHEEL, BLOWER (10 X 8) (M5, M6, M7, M8, M9, M10, M11, M12)	M7 - GMES800604BNAA
31	0130F00038	AUX LIMIT - LT BLUE 120°	M8 - GMES800604BXAA
71	2539307	BLOWER HOUSING 10 X 10 (M13, M14, M15, M16, M17, M18, M19)	M9 - GMES800803BNAA
71	2539305	BLOWER HOUSING 10 X 6 (M1, M2, M3, M4)	M10 - GMES800803BXAA
71	2539306	BLOWER HOUSING 10 X 8 (M5, M6, M7, M8, M9, M10, M11, M12)	M11 - GMES800804BNAA
81	764741	BLOWER BLOCK-OFF 10 X 10 (M13, M14, M15, M16, M17, M18, M19)	M12 - GMES800804BXAA
81	764740	BLOWER BLOCK-OFF 10 X 8 (M5, M6, M7, M8, M9, M10, M11, M12)	M13 - GMES800804CNAA
81	764739	BLOWER CUT-OFF 10 X 6 (M1, M2, M3, M4)	M14 - GMES800804CXAA
141	B1376863	MOUNT ARM, MOTOR (HEAVY DUTY) (QTY 3)	M15 - GMES800805CNAA
151	0121M00039	MOUNT BAND, MOTOR (HEAVY DUTY)	M16 - GMES800805CXAA
161	B1392918	WASHER FLAT 1/4 ID X 1 OD (QTY 3)	M17 - GMES801005CNAA
171	0163M00320	HEX HEAD ALL THREAD TAP BOLT	M18 - GMES801005CXAA
181	M0250565	SCREW-TC 1.25" (QTY 3)	M19 - GMES801205DNAA
191	B1393800	LOCKNUT NYLON INSERT 1/4,20	
201	0159F00076	WIRING HARNESS	
NS	0131F00120	MOTOR, PROGRAM-X13 (M1, M2)	
NS	0131F00121	MOTOR, PROGRAM-X13 (M3, M4)	
NS	0131F00122	MOTOR, PROGRAM-X13 (M5, M6)	
NS	0131F00123	MOTOR, PROGRAM-X13 (M7, M8)	
NS	0131F00124	MOTOR, PROGRAM-X13 (M9, M10)	
NS	0131F00125	MOTOR, PROGRAM-X13 (M11, M12)	
NS	0131F00126	MOTOR, PROGRAM-X13 (M13, M14)	
NS	0131F00127	MOTOR, PROGRAM-X13 (M15, M16)	
NS	0131F00128	MOTOR, PROGRAM-X13 (M17, M18)	
NS	0131F00129	MOTOR, PROGRAM-X13 (M19)	

Heat Exchange Assembly

HEAT EXCHANGE ASSEMBLY



Heat Exchange Assembly

Ref. Part No: No:	Description :	Ref. Part No: No:	Description:
Image 1:		Image 1:	
11	0270F00900	HEAT EXCHANGER ASSY (M1, M2)	321 0121F00128 COLLECTOR BOX 17.5" 1.75 DIA (M5, M6, M7, M8, M9, M10, M11, M12)
11	0270F00901	HEAT EXCHANGER ASSY (M3, M4)	321 0121F00198 COLLECTOR BOX, 14" 1.75 DIA (M3, M4)
11	0270F00902	HEAT EXCHANGER ASSY (M9, M10, M11, M12)	331 0128F00006 CHIMNEY TRANSITION BOTTOM
11	0270F00903	HEAT EXCHANGER ASSY (M17, M18)	341 0131M00002P MOTOR, VENT 80+
11	0270F00904	HEAT EXCHANGER ASSY (M19)	351 0154F00003 GASKET-14 INCH (M1, M2, M3, M4)
11	0270F00929	HEAT EXCHANGER ASSY (M5, M6, M7, M8)	351 0154F00004 GASKET-17.5 INCH (M5, M6, M7, M8, M9, M10, M11, M12)
11	0270F00930	HEAT EXCHANGER ASSY (M13, M14, M15, M16)	351 0154F00005 GASKET-21 INCH (M13, M14, M15, M16, M17, M18)
51	0151M00037	GAS VALVE	351 0154F00006 GASKET-24.5 INCH (M19)
61	0120F00006	MANIFOLD (M1, M2)	NS 0259F00054 HARNESS, WIRE ASSY 12 PIN (80%)
61	0120F00007	MANIFOLD (M3, M4, M5, M6, M7, M8)	NS 0159F00099 WIRE HARNESS ASSY, IGNITOR
61	0120F00008	MANIFOLD (M9, M10, M11, M12, M13, M14, M15, M16)	NS 0259F00078 WIRE KIT ASSY.
61	0120F00009	MANIFOLD (M17, M18)	NS 0159F00076 WIRING HARNESS
61	0120F00010	MANIFOLD (M19)	
151	20162904	*PRIMARY LIMIT-TEMPERATURE CONTROL (M3, M4, M5, M6, M7, M8, M9, M10, M11, M12, M17, M18) *Refer to service bulletin SF-054	Expanded Model Nomenclature
151	20162901	LIMIT (M1, M2)	M1 - GMES800403ANAA
151	20162903	LIMIT (M13, M14, M15, M16, M19)	M2 - GMES800403AXAA
161	4028000	ORIFICE PLATE, 2CELL (M1, M2)	M3 - GMES800603ANAA
161	4028001	ORIFICE PLATE, 3CELL (M3, M4, M5, M6, M7, M8)	M4 - GMES800603AXAA
161	4028002	ORIFICE PLATE, 4 CELL (M9, M10, M11, M12, M13, M14, M15, M16)	M5 - GMES800603BNAA
161	4028003	ORIFICE PLATE, 5CELL (M17, M18)	M6 - GMES800603BXAA
161	4028004	ORIFICE PLATE, 6CELL (M19)	M7 - GMES800604BNAA
201	0121F00162	TOP, BURNER BOX 2 CELL (M1, M2)	M8 - GMES800604BXAA
201	0121F00163	TOP, BURNER BOX 3 CELL (M3, M4, M5, M6, M7, M8)	M9 - GMES800803BNAA
201	0121F00164	TOP, BURNER BOX 4 CELL (M9, M10, M11, M12, M13, M14, M15, M16)	M10 - GMES800803BXAA
201	0121F00165	TOP, BURNER BOX 5 CELL (M17, M18)	M11 - GMES800804BNAA
201	0121F00166	TOP, BURNER BOX 6 CELL (M19)	M12 - GMES800804BXAA
211	10123529	MANUAL RESET R.O.S. LIMIT (QTY 2)	M13 - GMES800804CNAA
221	0121F00146	SIDE PLATE BURNER BOX (QTY 2)	M14 - GMES800804CXAA
231	0130F00008	SINI IGNITOR	M15 - GMES800805CNAA
241	0130F00010	FLAME SENSOR	M16 - GMES800805CXAA
271	10716005	ORIFICE (QTY 2)	M17 - GMES801005CNAA
281	B4022700	INSHOT BURNER ASSY 3" (QTY 2)	M18 - GMES801005CXAA
291	0121F00167	BURNER RACK, 2 CELL (M1, M2)	M19 - GMES801205DNAA
291	0121F00168	BURNER RACK, 3 CELL (M3, M4, M5, M6, M7, M8)	
291	0121F00169	BURNER RACK, 4 CELL (M9, M10, M11, M12, M13, M14, M15, M16)	
291	0121F00170	BURNER RACK, 5 CELL (M17, M18)	
291	0121F00171	BURNER RACK, 6 CELL (M19)	
301	DY6.186.070	VENT MOTOR CAPACITOR	
311	0154F00003	GASKET-14 INCH (M1, M2, M3, M4)	
311	0154F00004	GASKET-17.5 INCH (M5, M6, M7, M8, M9, M10, M11, M12)	
311	0154F00005	GASKET-21 INCH (M13, M14, M15, M16, M17, M18)	
311	0154F00006	GASKET-24.5 INCH (M19)	
321	0121F00333	21" COLLECTOR BOX 1.75" DIA (M13, M14, M15, M16)	
321	0121F00330	24.5" COLLECTOR BOX 2.125" DIA (M19)	
321	0121F00217	COLLECTOR BOX (M17, M18)	
321	0121F00126	COLLECTOR BOX 14" 1.375 DIA (M1, M2)	