



# REPAIR PARTS

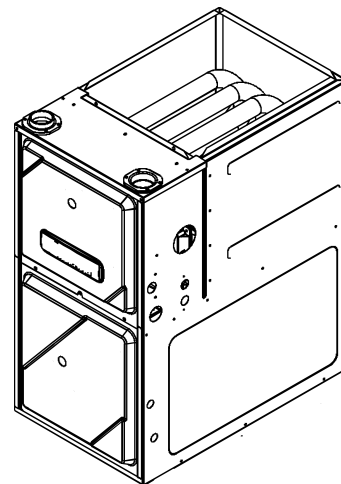
---

## GMES 96% Ultra Low Nox Single Stage Gas Furnace

GMES960403BUAA

GMES960603BUAA

GMES960805CUAA



This manual is to be used by qualified technicians only.

© 2019 Goodman Manufacturing Company, L.P. ♦ 5151 San Felipe St, Suite 500 ♦ Houston, TX 77056

## Important Information

---

### Index

Functional Parts List .....	3
Illustration and Parts .....	4 - 11

*Views shown are for parts illustrations only, not servicing procedures*

#### Text Codes:

AR - As Required

NA - Not Available

NS - Not Shown

00000000 - See Note

QTY - Quantity    Example (QTY 3) (If Quantity not shown, Quantity = 1)

M - Model        Example (M1) (If M Code not shown, then part is used on all Models)

#### Expanded Model Nomenclature:

Example

M1 - Model#1

M2 - Model#2

M3 - Model#3

Goodman Manufacturing Company, L.P. is not responsible for personal injury or property damage resulting from improper service. Review all service information before beginning repairs.

Warranty service must be performed by an authorized technician, using authorized factory parts. If service is required after the warranty expires, Goodman Manufacturing Company, L.P. also recommends contacting an authorized technician and using authorized factory parts.

Goodman Manufacturing Company, L.P. reserves the right to discontinue, or change at any time, specifications or designs without notice or without incurring obligations.

For assistance within the U.S.A. contact:

Homeowner Support

Goodman Manufacturing Company, L.P.

19001 Kermier Road

Waller, Texas 77484

877-254-4729-Telephone

713-863-2382-Facsimile

For assistance outside the U.S.A. contact:

International Division

Goodman Manufacturing Company, L.P.

19001 Kermier Road

Waller, Texas 77484

713-861-2500-Telephone

713-863-2382-Facsimile

# Functional Parts

## Part

No: Description:

---

0271F00181	BLOWER HSG ASSY (M1)
0271F00159	BLOWER SHELL & WHEEL ASSY (M2)
0271F00161	BLOWER SHELL & WHEEL ASSY (M3)
PCBBF158	CONTROL BOARD (M3)
PCBBF159	CONTROL BOARD (M1)
PCBBF160	CONTROL BOARD (M2)
0130F00762	FLAME SENSOR
0151M00094	GAS VALVE
0257F00436	HEAT EXCHANGER ASSY (M3)
0257F00434	HEAT EXCHANGER ASSY (M2)
0257F00432	HEAT EXCHANGER ASSY (M1)
0130M00243	INTERLOCK SWITCH
0130F00071	LIMIT SWITCH (M2)
0131F00035	MOTOR, BLOWER (M1, M2)
0131F00049	MOTOR, BLOWER (M3)
0130F00529	PRESSURE TRANSDUCER
20162903	PRIMARY LIMIT - BLUE (M1, M3)
0130F00038	PRIMARY LIMIT - LT BLUE 120° (AUX) (QTY 2)
0130F00596	SWITCH, HIGH LIMIT ULN
0130F00684	SWITCH, PRESSURE
0163F00055	ULN Burner Assy (M1)
0163F00056	ULN Burner Assy (M2)
0163F00057	ULN Burner Assy (M3)
0130F00717	ULN IGNITER

## SPECIAL PARTS

0161F00086 NAMEPLATE, GOODMAN

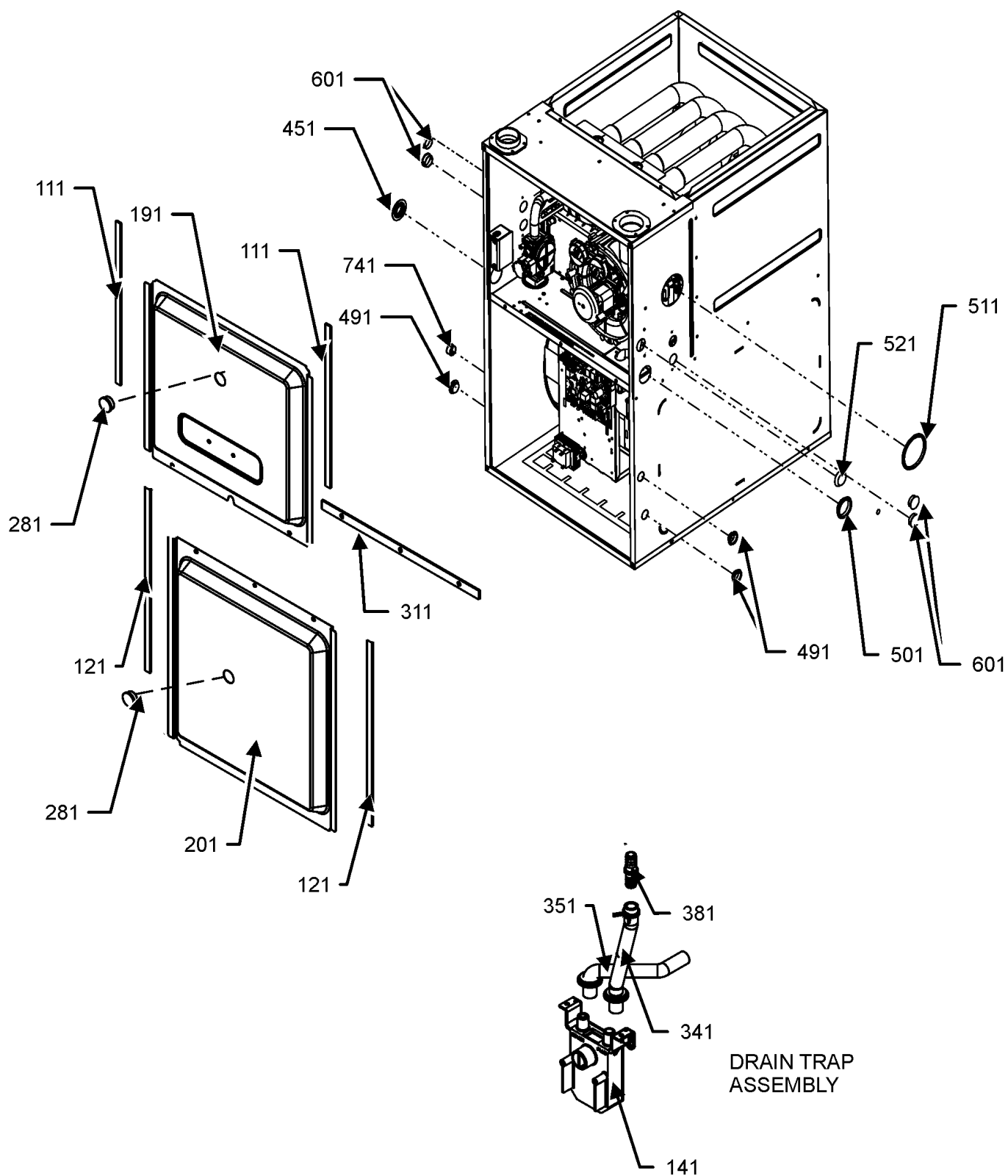
## Expanded Model Nomenclature

M1 - GMES960403BUAA

M2 - GMES960603BUAA

M3 - GMES960805CUAA

# CABINET ASSEMBLY



CABINET ASSEMBLY MAY DIFFER  
FROM WHAT IS SHOWN

# CABINET ASSEMBLY

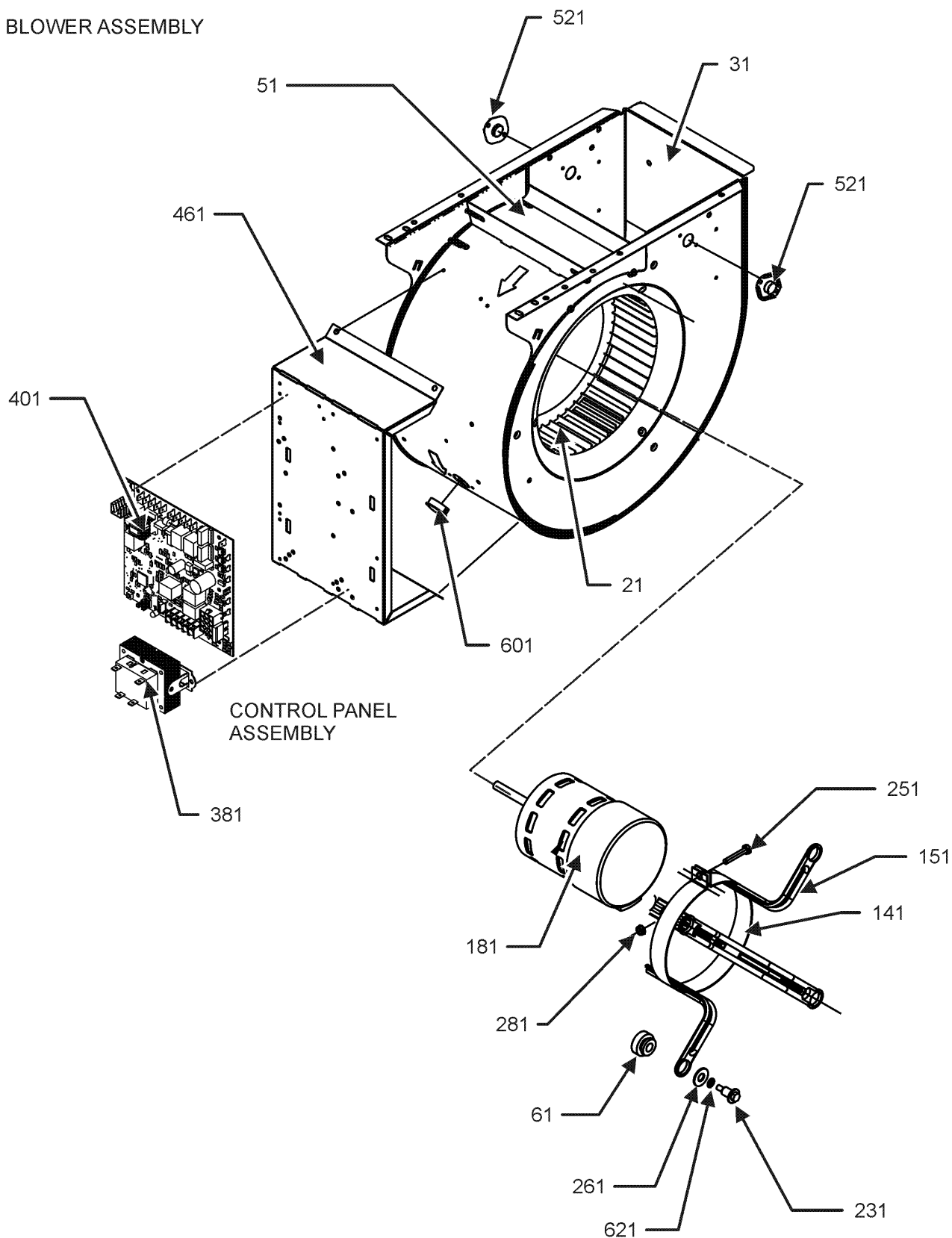
Ref. Part No: No:	Description:	Ref. Part No: No:	Description:
<b>Image 1:</b>			
111	0154F00024		GASKET (QTY 2)
121	0154F00025		GASKET (QTY 2)
141	0161F00046		DRAIN TRAP
191	0121F00291DG		DOOR, ACCESS 17.5 PNT (M1, M2)
191	0121F00292DG		DOOR, ACCESS 21 PNT (M3)
201	0121F00288DG		DOOR, BLOWER 17.5 PNT (M1, M2)
201	0121F00289DG		DOOR, BLOWER 21 PNT (M3)
281	B1392139		VIEW PORT BUSHING-BLOWER DOOR (QTY 2)
311	0154F00020		GASKET, DECK (M1, M2)
311	0154F00021		GASKET, DECK (M3)
341	0164F00017		HOSE-ELBOW/TRAP
351	0164F00006		HOSE, COVER/TRAP
381	0161F00047		COUPLING, HOSE BARBED
451	M0501301		PIPE GROMMET
491	M0570808		BUTTON PLUG (QTY 3)
501	M0570806		BUTTON PLUG
511	M0570807		BUTTON PLUG
521	0161M00027		PLUG, HOLE
601	B1392021		PLASTIC PLUG, 1" (2713-BLK) (QTY 4)
741	B1392104		UNIVERSAL BUSHING UB 875
NS	M0310345		BUTTON PLUG (QTY 2)
NS	0163M00460		CLAMP-HOSE (QTY 2)
NS	0270F04115		DRAIN KIT ASSY UF
NS	0161F00086		NAMEPLATE, GOODMAN
NS	M0273904		RETAINER-SCREW (QTY 3)
NS	M0209730		SCREW-DECORATIVE (QTY 3)

## Expanded Model Nomenclature

M1 - GMES960403BUAA
M2 - GMES960603BUAA
M3 - GMES960805CUAA

# BLOWER ASSEMBLY

## BLOWER ASSEMBLY



BLOWER ASSEMBLY MAY DIFFER FROM WHAT IS SHOWN

# BLOWER ASSEMBLY

Ref. Part No: No:	Description:	Ref. Part No: No:	Description:
<b>Image 1:</b>			
31	0271F00181		BLOWER HSG ASSY (M1)
31	0271F00159		BLOWER SHELL & WHEEL ASSY (M2)
31	0271F00161		BLOWER SHELL & WHEEL ASSY (M3)
61	A4002702		BLOWER MOTOR GROMMET (M3)
141	10441601		BAND-MTR MOUNT (M3)
141	0121M00038		MOUNT BAND, MOTOR (M1, M2)
151	0163M00458		ARM MOTOR MOUNT (M3)
151	B1376857		MOTOR MOUNT ARM (M1, M2)
181	0131F00035		MOTOR, BLOWER (M1, M2)
181	0131F00049		MOTOR, BLOWER (M3)
231	0163F00028		SCREW (M3)
231	M0250565		SCREW-TC 1.25" (M1, M2)
251	M0267144		MACHINE SCREW (M3)
251	B1393323		SCREW,MACH HWH 1/4-20X1 1/2 BZ (M1, M2)
261	B1392918		WASHER, FLAT 1/4 ID X 1 OD (M1, M2)
261	M0274008		WASHER-FLAT (M3)
281	M0282015		KEPS NUT (M3)
281	B1393800		LOCKNUT, NYLON, INSERT 1/4,20 (M1, M2)
381	0130M00140		TRANSFORMER 120V TO 24V, 40VA
401	PCBBF158		CONTROL BOARD (M3)
401	PCBBF159		CONTROL BOARD (M1)
401	PCBBF160		CONTROL BOARD (M2)
461	0121F00464		MOUNTING PLATE-CONTROLS
521	0130F00038		PRIMARY LIMIT - LT BLUE 120° (AUX) (QTY 2)
601	B1392021		PLASTIC PLUG, 1" (2713-BLK) (QTY 4)
621	B1392820		WASHER, SPLIT LOCK 1/4 BZ (M3)
NS	0159F00035		WIRE HARNESS
NS	0259F00024		WIRE HARNESS-BLOWER
NS	0159F00078		WIRING, HARNESS

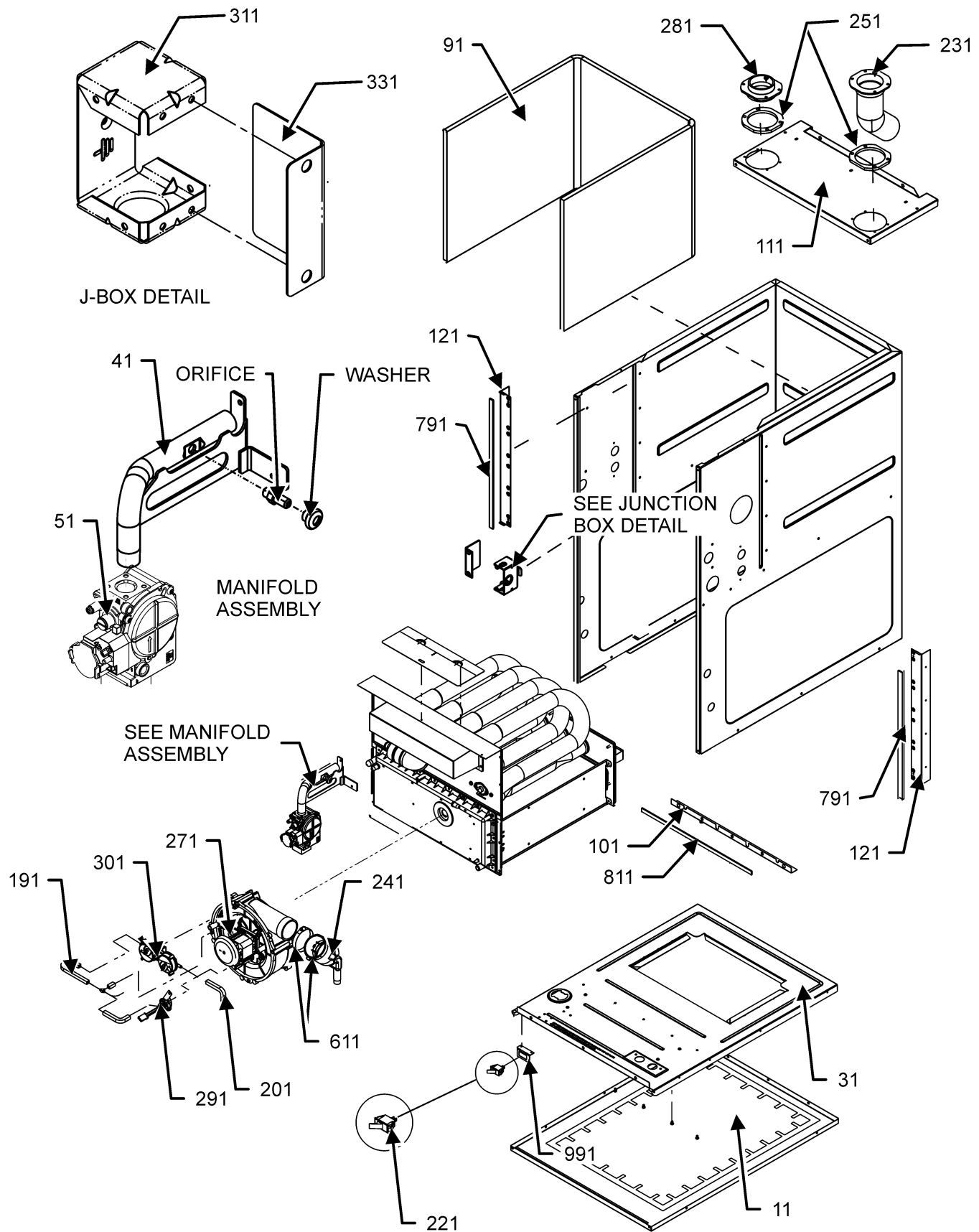
## Expanded Model Nomenclature

M1 - GMES960403BUAA

M2 - GMES960603BUAA

M3 - GMES960805CUAA

# CHASSIS ASSEMBLY





# CHASSIS ASSEMBLY

Ref. Part No: No:	Description:	Ref. Part No: No:	Description:
<b>Image 1:</b>			
11	0121F00530		BASEPAN, 17.5 (M1, M2)
11	0121F00531DG		BASEPAN, 21 PNT (M3)
31	0121F00533		DECK-BLOWER 17.5" (M1, M2)
31	0121F00534		DECK-BLOWER 21" (M3)
41	0263F00007		ULN MANIFOLD ASSY (M1)
41	0263F00008		ULN MANIFOLD ASSY (M2)
41	0263F00009		ULN MANIFOLD ASSY (M3)
51	0151M00094		GAS VALVE
91	0160F00015		INSULATION, HT EXCHANGER 17.5" (M1, M2)
91	0160F00016		INSULATION, HT EXCHANGER 21" (M3)
101	0121F00314		ANGLE, DECK (M1, M2)
101	0121F00315		ANGLE, DECK (M3)
111	0121F00279DG		PAINTED TOP, FURNACE 17.5 (M1, M2)
111	0121F00280DG		PAINTED TOP, FURNACE 21 (M3)
121	0121F00313		ANGLE, SIDE (QTY 2)
191	0164M00019		HOSE-PRESSURE SW 6"
201	0164M00015		PRESSURE SWITCH HOSE
221	0130M00243		INTERLOCK SWITCH
231	0164F00002		FLUE PIPE W/BEND
241	0164F00001		ELBOW-FLUE, UPFLOW
251	0154F00041		FRESH AIR GASKET (QTY 2)
271	0171M00006		MOTOR, ID BLOWER
281	0161F00037		COUPLING
291	0130F00529		PRESSURE TRANSDUCER
301	0130F00684		SWITCH, PRESSURE
311	0161F00042		JUNCTION BOX PLA
331	0161F00043		JUNCTION BOX LID
611	0163M00460		CLAMP-HOSE (QTY 2)
791	0154F00015		GASKET (QTY 2)
811	0154F00014		GASKET (M1, M2)
811	0154F00016		GASKET (M3)
991	0121F00389		BRACKET, DOOR SWITCH
NS	0154F00020		GASKET, DECK (M1, M2)
NS	0154F00021		GASKET, DECK (M3)
NS	M0326804		PLUG-TUBE
NS	0130F00596		SWITCH, HIGH LIMIT ULN
NS	0163F00038		ULN ORIFICE (M1)
NS	0163F00039		ULN ORIFICE (M2)
NS	0163F00040		ULN ORIFICE (M3)
NS	0164F00019		ULN WASHER
NS	0259F00277		WIRE HARNESS-BAFFLE LIMIT
NS	0159F00056		WIRING, HARNESS

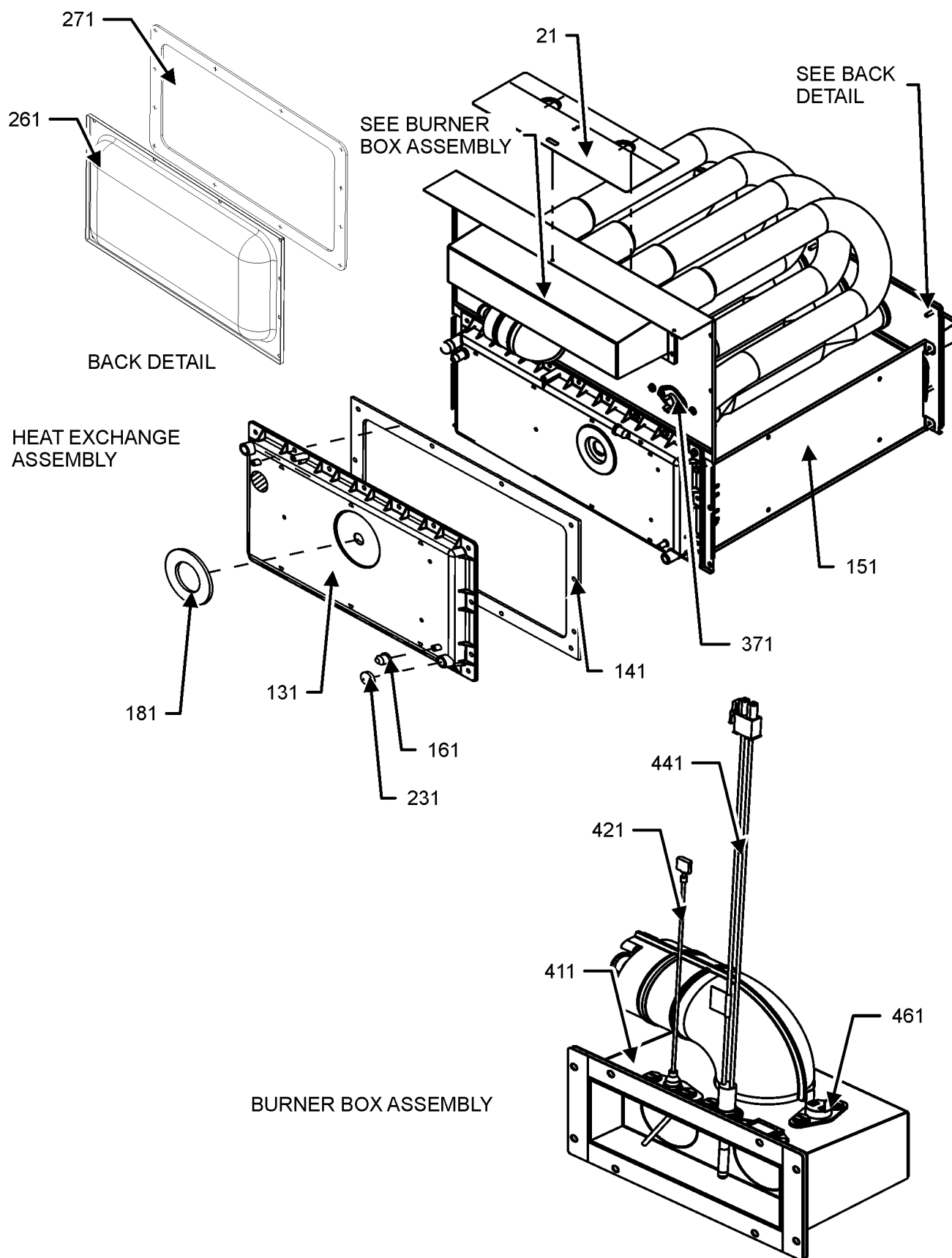
## Expanded Model Nomenclature

M1 - GMES960403BUAA

M2 - GMES960603BUAA

M3 - GMES960805CUAA

# HEAT EXCHANGE ASSEMBLY



# HEAT EXCHANGE ASSEMBLY

Ref. Part No: No:	Description:	Ref. Part No: No:	Description:
<b>Image 1:</b>			
21	0121F00704		BAFFLE, AIR ULN
131	0161F00073		COVER, FRONT (M1, M2)
131	0161F00074		COVER, FRONT (M3)
141	0154F00026		GASKET FRONT COVER (M1, M2)
141	0154F00030		GASKET FRONT COVER (M3)
151	0257F00432		HEAT EXCHANGER ASSY (M1)
151	0257F00434		HEAT EXCHANGER ASSY (M2)
151	0257F00436		HEAT EXCHANGER ASSY (M3)
161	M0326804		TUBE PLUG
181	0154F00066		GASKET, ID ORIFICE ULN
231	A1781105		CAP-VINYL .500
261	0121F00317		COVER, REAR (M1, M2)
261	0121F00318		COVER, REAR (M3)
271	0154F00046		GASKET, REAR CVR (M1, M2)
271	0154F00047		GASKET, REAR CVR (M3)
371	0130F00071		LIMIT SWITCH (M2)
371	20162903		PRIMARY LIMIT - BLUE (M1, M3)
411	0163F00055		ULN Burner Assy (M1)
411	0163F00056		ULN Burner Assy (M2)
411	0163F00057		ULN Burner Assy (M3)
421	0130F00762		FLAME SENSOR
441	0130F00717		ULN IGNITER
461	0130F00596		SWITCH, HIGH LIMIT ULN
NS	0154F00041		GASKET FRESH AIR (QTY 2)
NS	0154F00051		GASKET, BRNR FRONT (M1)
NS	0154F00052		GASKET, BRNR FRONT (M2)
NS	0154F00053		GASKET, BRNR FRONT (M3)
NS	0154F00069		GASKET, LIMIT ULN
NS	0154F00068		GASKET, ULN FLAME SENSOR
NS	0154F00067		GASKET, ULN IGNITOR
NS	0121F00743		HEAT SHIELD, PRIMARY LIMIT (M1, M2)
NS	0121F00583		INSULATION, RETAINER (M1, M2)
NS	0121F00584		INSULATION, RETAINER (M3)
NS	0121F00439		PRIMARY LIMIT-HEAT SHIELD (M3)
NS	0121F00355		SHIELD, COIL (QTY 2)

## Expanded Model Nomenclature

M1 - GMES960403BUAA M2 - GMES960603BUAA M3 - GMES960805CUAA
---