

## Submittal Data Sheet

16.0 SEER, Air Conditioner System, 3.0 Ton, Outdoor Unit-GSX160361F\*

Submitted By : Goodman/Amana Unitary Test System

Submitted To : N/A

Tags : AHRI 202603457 Products [GSX160361F\* , CA\*F4961\*6D\*+TXV, GMVM970804CNB\*], SEER 16.0 , EER 13.0

### STANDARD FEATURES:

- High-efficiency compressor
- Single-speed PSC condenser fan motor
- Factory-installed filter drier
- Fully charged for fifteen feet of tubing length
- Contactor with lug connection
- AHRI Certified - ETL Listed
- Ground lug connection
- Copper tube & enhanced aluminum fin coil

### CABINET FEATURES:

- Heavy-gauge galvanized steel cabinet and louvered coil guards
- Service valves with sweat connections and easy-access gauge ports
- Engineered sound control top design
- Baked-on powder-paint finish with 500-hour salt-spray approval
- Single-panel access to controls with space for field-installed accessories
- Service port and controls are accessible while unit is operating
- Compact footprint
- Rust-resistant screws
- When properly anchored, meets the 2017 Florida Building Code unit integrity requirements for hurricane-type winds (Anchor bracket kits available.)



At Goodman, we believe in American dependability. Units are designed, engineered and assembled in the U.S.A.



## Submittal Data Sheet

16.0 SEER, Air Conditioner System, 3.0 Ton, Outdoor Unit-GSX160361F\*

Submitted By : Goodman/Amana Unitary Test System

Submitted To : N/A

Tags : AHRI 202603457 Products [GSX160361F\* , CA\*F4961\*6D\*+TXV, GMVM970804CNB\*] , SEER 16.0 , EER 13.0

### SYSTEM PERFORMANCE

Outdoor Unit Model No.:	GSX160361F*	Description :	16.0 SEER, Air Conditioner System, 3.0 Ton Outdoor System
Indoor Unit Model No.:	CAPF4961C6D*		
TXV/PISTON :	TXV-42		
Furnace Unit Model No.:	GMVM970804CN		
Rated Cooling Conditions:	Outdoor (°F DB/WB):95/75 Indoor (°F DB/WB):80/67	Rated Heating Conditions:	Outdoor (°F DB/WB):N/A/N/A Indoor (°F DB/WB):N/A/N/A
Rated Cooling Capacity (Btu/hr):	34400	OD Rated Heating Capacity (Btu/hr)	N/A
EER:	13.0	Heating COP:	N/A
SEER:	16.0	AFUE:	97

### OUTDOOR UNIT DETAILS : GSX160361F\*

Power Supply (V/Hz/Ph):	208/230/60/1	Compressor Type:	Scroll
Min. Circuit Amps MCA (A):	18.6	Compressor Stages:	Single Stage
Max Overcurrent Protection (MOP) (A):	30	Suction Valve Connection Size (in):	7/8
Compressor Rated Load Amps :	14.1	Liquid Valve Connection Size (in):	3/8
Refrigerant Type:	R-410A	Sound Power(High/Med/Low) (dBA):	72 / - / N/A
Holding Refrigerant Charge (oz):	94	Cooling Operation Range (°F DB):	55 - 125
Additional Charge (oz/ft):	0.60	Heating Operation Range (°F DB):	N/A
Pre-charge Piping (Length) (ft):	15	Net Weight (lb):	162
Dimensions (HxWxD) (in):	40 x 29-1/4 x 29-1/4	Gross Weight (lb):	174
*Max. Pipe Length (Vertical) (ft):	50	*Max. Pipe Length (Total) (ft):	80

*\*Refer to Long Line Set Application TP-107 for lines greater than 80 ft. or vertical elevation changes more than 50 ft. for single stage equipment and 25 ft. for 2-stage equipment.*



At Goodman, we believe in American dependability. Units are designed, engineered and assembled in the U.S.A.



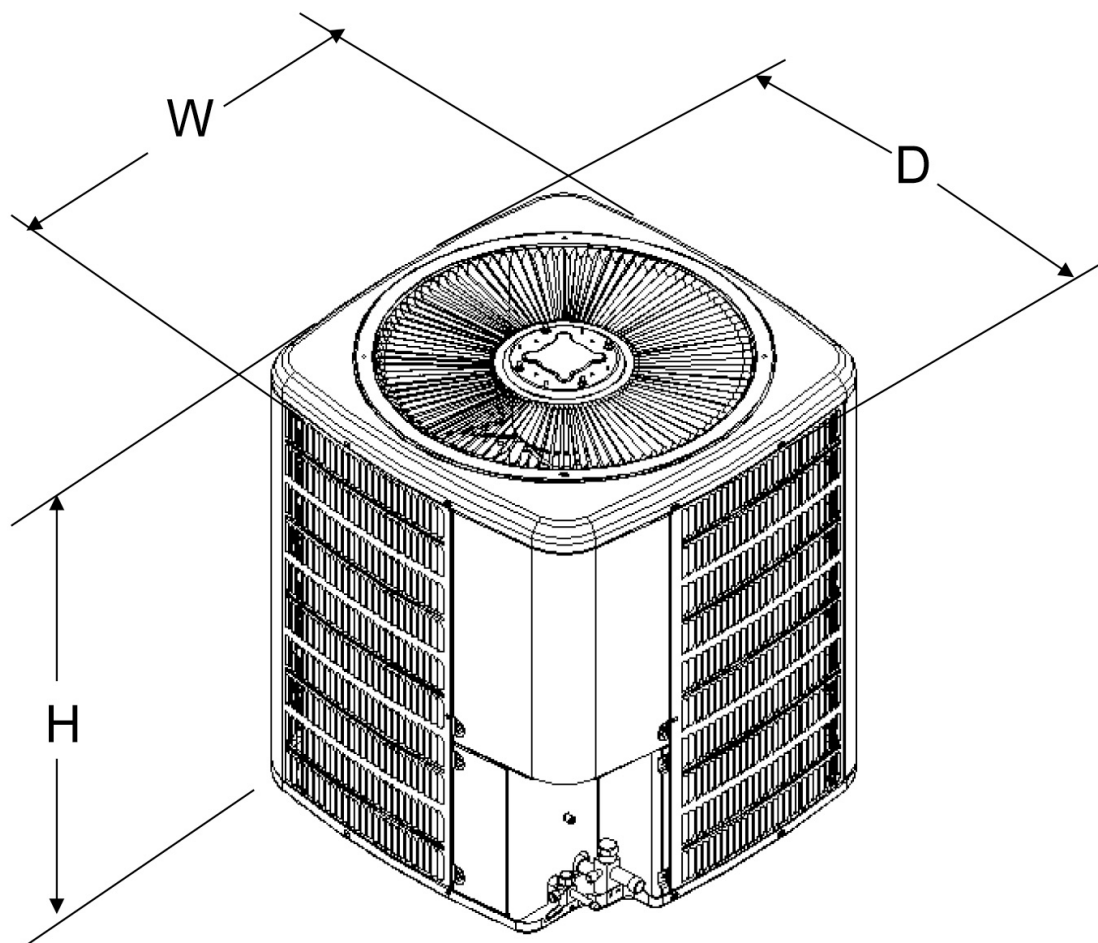
## Submittal Data Sheet

16.0 SEER, Air Conditioner System, 3.0 Ton, Outdoor Unit-GSX160361F\*

Submitted By : Goodman/Amana Unitary Test System

Submitted To : N/A

Tags : AHRI 202603457 Products [GSX160361F\* , CA\*F4961\*6D\*+TXV, GMVM970804CNB\*], SEER 16.0 , EER 13.0



At Goodman, we believe in American dependability. Units are designed, engineered and assembled in the U.S.A.



## Submittal Data Sheet

16.0 SEER, Air Conditioner System, 3.0 Ton, Outdoor Unit-GSX160361F\*

Submitted By : Goodman/Amana Unitary Test System

Submitted To : N/A

Tags : AHRI 202603457 Products [GSX160361F\* , CA\*F4961\*6D\*+TXV, GMVM970804CNB\*], SEER 16.0 , EER 13.0

### STANDARD FEATURES:

- All-Aluminum evaporator coil
- Optimized for use with R-410A refrigerant
- Check flowrator for cooling and heat pump applications
- Vertical application
- 21" depth for easier attic access
- Galvanized, leather grain-embossed finish
- Rust resistant, thermoplastic drain pans featuring a low water-retention design
- AHRI certified
- ETL Listed

### CABINET FEATURES:

- Twenty one inch depth for easier attic access
- Split seam front for easy access
- Foil-faced insulation covers the internal casing to reduce cabinet condensation
- Galvanized, leather grain-embossed finish



At Goodman, we believe in American dependability. Units are designed, engineered and assembled in the U.S.A.



Submittal Data Sheet

16.0 SEER, Air Conditioner System,3.0 Ton, Outdoor Unit-GSX160361F\*

Submitted By : Goodman/Amana Unitary Test System

Submitted To : N/A

Tags : AHRI 202603457 Products [GSX160361F\* , CA\*F4961\*6D\*+TXV, GMVM970804CNB\*] , SEER 16.0 , EER 13.0

INDOOR UNIT DETAILS : CAPF4961C6D\*

Dimensions (HxWxD) (in) :	30 x 21 x 21	Suction Connection Size (in) :	7/8
Net Weight (lb):	73	Liquid Connection Size (in) :	3/8
Gross Weight (lb):	75	Condensate Connection (in) :	3/4
Power Voltage (lb):	-	Current Type :	-
Power Phase:	-	Power Frequency :	-
Min Voltage :	-	Max Voltage :	-
MCA :	-	MOP :	-
Electric Heat Range :	-	Indoor Blower FLA :	-
Fan Motor Output :	-	Outdoor Fan LRA :	-



At Goodman, we believe in American dependability. Units are designed, engineered and assembled in the U.S.A.



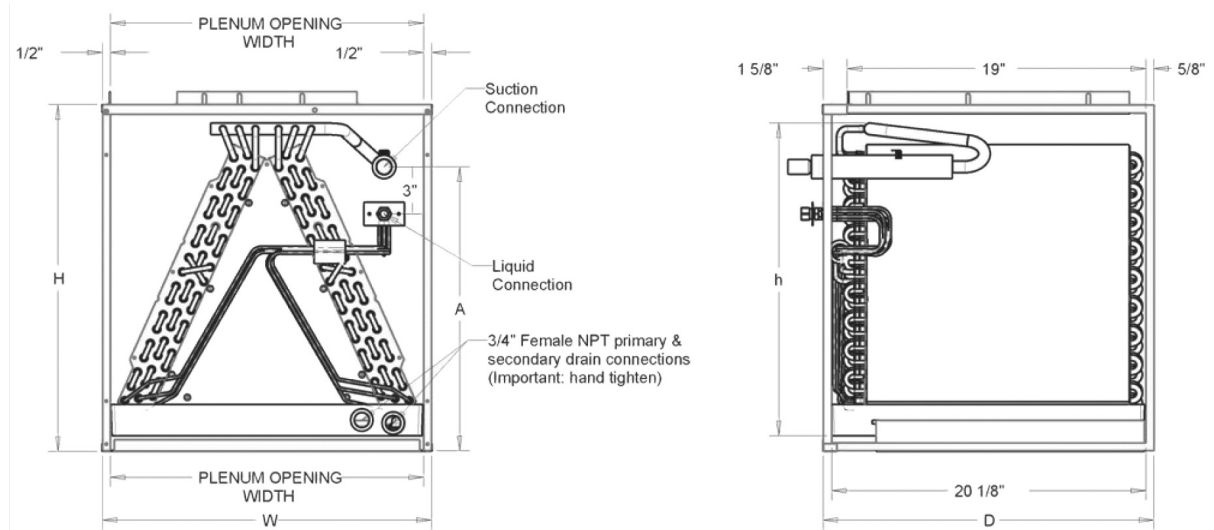
## Submittal Data Sheet

16.0 SEER, Air Conditioner System, 3.0 Ton, Outdoor Unit-GSX160361F\*

Submitted By : Goodman/Amana Unitary Test System

Submitted To : N/A

Tags : AHRI 202603457 Products [GSX160361F\* , CA\*F4961\*6D\*+TXV, GMVM970804CNB\*], SEER 16.0 , EER 13.0



At Goodman, we believe in American dependability. Units are designed, engineered and assembled in the U.S.A.



## Submittal Data Sheet

16.0 SEER, Air Conditioner System, 3.0 Ton, Outdoor Unit-GSX160361F\*

Submitted By : Goodman/Amana Unitary Test System

Submitted To : N/A

Tags : AHRI 202603457 Products [GSX160361F\* , CA\*F4961\*6D\*+TXV, GMVM970804CNB\*], SEER 16.0 , EER 13.0

### STANDARD FEATURES:

- Heavy-duty aluminized-steel tubular heat exchanger
- Efficient and quiet variable-speed Blower
- Stainless-steel sloped secondary heat exchanger
- Self-calibrating modulating gas valve
- Integrated communicating ComfortBridge™ technology
- Commissioning and diagnostics via on board Bluetooth with the CoolCloud™ phone and tablet application
- Silicon Nitride igniter
- Dual 7-segment display
- Color-coded low-voltage terminals
- Modulating gas valve
- All models comply with California 40 ng/J
- AHRI Certified, ETL Listed
- Energy Star
- Furnace control board with self-diagnostics and provisions for electronic air cleaner and 120-volt or 24-volt humidifiers



### CABINET FEATURES:

- Multi-position installation: upflow, horizontal left or right
- Certified for direct vent (2-pipe) or non-direct vent (1 pipe)
- Easy to install top venting with optional side vent
- Convenient left or right connection for gas and electrical service
- Cabinet air leakage (Qleak) less than or equal to 2%
- Fully insulated heat exchanger and blower section
- Bottom or side return air applications
- Heavy-gage steel cabinet with durable finish



At Goodman, we believe in American dependability. Units are designed, engineered and assembled in the U.S.A.



### Submittal Data Sheet

16.0 SEER, Air Conditioner System,3.0 Ton, Outdoor Unit-GSX160361F\*

Submitted By : Goodman/Amana Unitary Test System

Submitted To : N/A

Tags : AHRI 202603457 Products [GSX160361F\* , CA\*F4961\*6D\*+TXV, GMVM970804CNB\*] , SEER 16.0 , EER 13.0

INDOOR FURNACE UNIT DETAILS : GMVM970804CNB\*

Power Supply (V/Hz/Ph):	115/60/1	Temperature Rise Range High Fire (° F):	25-55
Min. Circuit Amps MCA (A):	11.4	Temperature Rise Range Low Fire (° F):	25-55
Max Overcurrent Protection (MOP) (A):	15.0	High Fire Input Capacity :	80000
AFUE :	98	High Fire Output Capacity :	77600
Vent Diameter (In):	2;3	Low Fire Input Capacity :	40000
Net Weight (lb):	-	Low fire output Capacity :	38800
Gross Weight (lb):	140	Dimensions (HxWxD) (in):	34-1/2 x 21 x 29
Power Voltage (lb):	115	Current Type :	AC
Power Phase:	1	Power Frequency :	60
Min Voltage :	-	Max Voltage :	-
MCA :	11.4	MOP :	15.0
Electric Heat Range :	-	Indoor Blower FLA :	-
Fan Motor Output :	-	Outdoor Fan LRA :	-



At Goodman, we believe in American dependability. Units are designed, engineered and assembled in the U.S.A.



## Submittal Data Sheet

16.0 SEER, Air Conditioner System, 3.0 Ton, Outdoor Unit-GSX160361F\*

Submitted By : Goodman/Amana Unitary Test System

Submitted To : N/A

Tags : AHRI 202603457 Products [GSX160361F\*, CA\*F4961\*6D\*+TXV, GMVM970804CNB\*], SEER 16.0 , EER 13.0

