

## Submittal Data Sheet

15.0 SEER, Heat Pump System, 3.0 Ton, Outdoor Unit-GSZ160361B\*

Submitted By : Goodman/Amana Unitary Test System

Submitted To : N/A

Tags : AHRI 207349838 Products [GSZ160361B\* , CA\*F4860\*6D\*+TXV, GM9C961004CNA\*] , SEER 15.0 , EER 12.5 , HSPF 8.5

### STANDARD FEATURES:

- Energy-efficient compressor
- Single-speed PSC condenser fan motor
- Factory-installed filter drier
- Factory-installed suction line accumulator
- Factory-installed compressor crankcase heater
- Factory-installed high-capacity muffler
- Factory-installed high and low-pressure switches
- SmartShift® technology with short-cycle protection to ensure quiet, reliable defrost
- Contactor with lug connection
- Fully charged for fifteen feet of tubing length
- AHRI Certified-ETL Listed
- Copper tube & enhanced aluminum fin coil.

### CABINET FEATURES:

- Heavy-gauge galvanized steel cabinet and louvered coil guards
- Service valves with sweat connections and easy-access gauge ports
- Engineered sound control top design
- Baked-on powder-paint finish with 500-hour salt-spray approval
- Single-panel access to controls with space for field-installed accessories
- Service port and controls are accessible while unit is operating
- Compact footprint
- Rust-resistant screws
- When properly anchored, meets the 2017 Florida Building Code unit integrity requirements for hurricane-type winds (Anchor bracket kits available.)



At Goodman, we believe in American dependability. Units are designed, engineered and assembled in the U.S.A.



### Submittal Data Sheet

15.0 SEER, Heat Pump System,3.0 Ton, Outdoor Unit-GSZ160361B\*

Submitted By : Goodman/Amana Unitary Test System

Submitted To : N/A

Tags : AHRI 207349838 Products [GSZ160361B\* , CA\*F4860\*6D\*+TXV, GM9C961004CNA\*] , SEER 15.0 , EER 12.5 , HSPF 8.5

### SYSTEM PERFORMANCE

|                                  |   |                                    |   |
|----------------------------------|---|------------------------------------|---|
| Outdoor Unit Model No.:          | GSZ160361B*   | Description :                      | 15.0 SEER, Heat Pump System, 3.0 Ton Outdoor System |
| Indoor Unit Model No.:           | CAPF4860C6D*  |                                    |   |
| TXV/PISTON :                     | TX3N4   |                                    |   |
| Furnace Unit Model No.:          | GM9C961004CN  |                                    |   |
| Rated Cooling Conditions:        | Outdoor (°F DB/WB):95/75<br>Indoor (°F DB/WB):80/67 | Rated Heating Conditions:          | Outdoor (°F DB/WB):47/43<br>Indoor (°F DB/WB):70/60 |
| Rated Cooling Capacity (Btu/hr): | 34000N/A  | OD Rated Heating Capacity (Btu/hr) | 35000   |
| EER:                             | 12.5  | Heating COP:                       | 3.8   |
| SEER:                            | 15.0  | * HSPF:                            | 8.5   |

### OUTDOOR UNIT DETAILS : GSZ160361B\*

|                                       |                          |                                     |              |
|---------------------------------------|--------------------------|-------------------------------------|--------------|
| Power Supply (V/Hz/Ph):               | 208/230/60/1             | Compressor Type:                    | Scroll       |
| Min. Circuit Amps MCA (A):            | 18.9                     | Compressor Stages:                  | Single Stage |
| Max Overcurrent Protection (MOP) (A): | 30                       | Suction Valve Connection Size (in): | 7/8          |
| Compressor Rated Load Amps :          | 14.1                     | Liquid Valve Connection Size (in):  | 3/8          |
| Refrigerant Type:                     | R-410A                   | Sound Power(High/Med/Low) (dBA):    | 73 / - / N/A |
| Holding Refrigerant Charge (oz):      | 175                      | Cooling Operation Range (°F DB):    | 55 - 125     |
| Additional Charge (oz/ft):            | 0.60                     | Heating Operation Range (°F DB):    | -20 - 70     |
| Pre-charge Piping (Length) (ft):      | 15                       | Net Weight (lb):                    | 220          |
| Dimensions (HxWxD) (in):              | 42-1/4 x 35-3/4 x 35-3/4 | Gross Weight (lb):                  | 246          |
| *Max. Pipe Length (Vertical) (ft):    | 50                       | *Max. Pipe Length (Total) (ft):     | 80           |

*\*Refer to Long Line Set Application TP-107 for lines greater than 80 ft. or vertical elevation changes more than 50 ft. for single stage equipment and 25 ft. for 2-stage equipment.*



At Goodman, we believe in American dependability. Units are designed, engineered and assembled in the U.S.A.



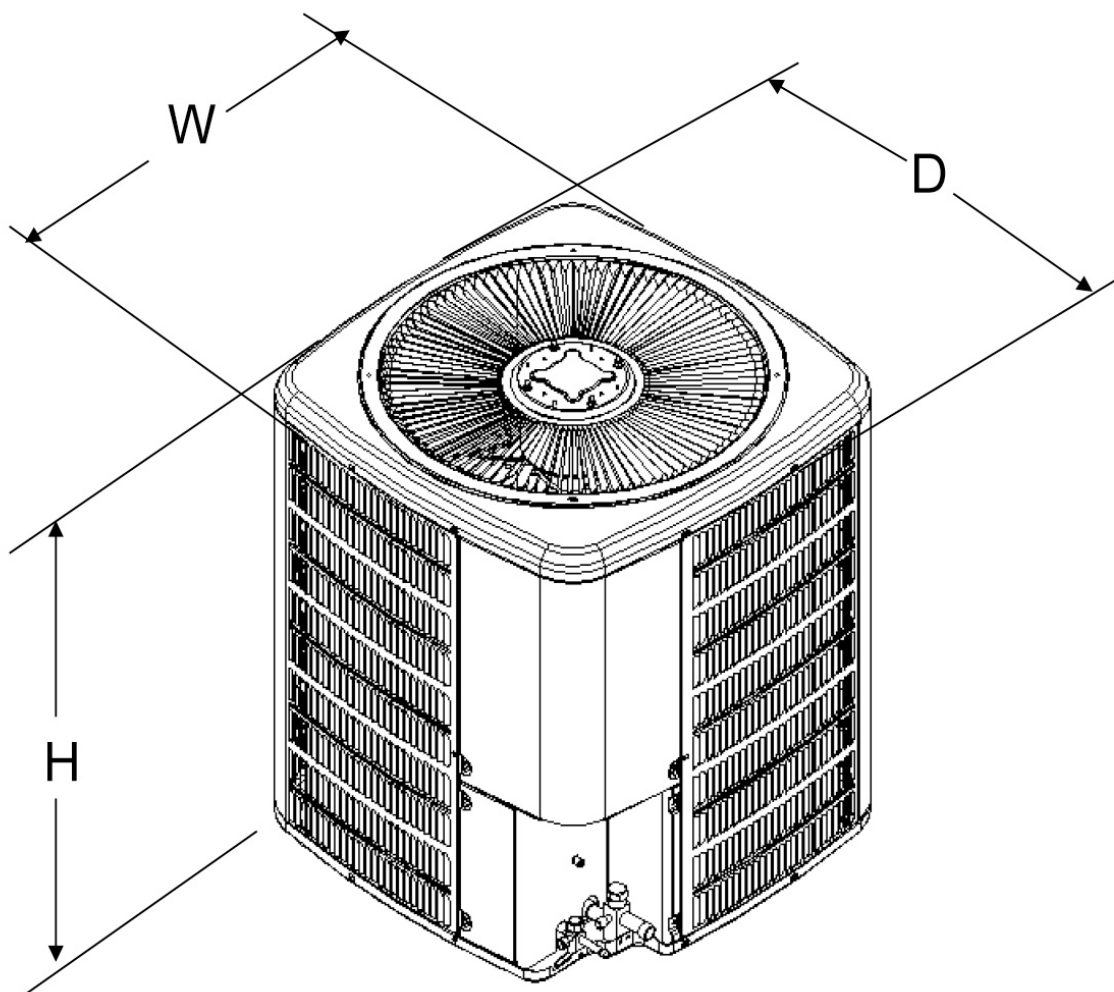
## Submittal Data Sheet

15.0 SEER, Heat Pump System, 3.0 Ton, Outdoor Unit-GSZ160361B\*

Submitted By : Goodman/Amana Unitary Test System

Submitted To : N/A

Tags : AHRI 207349838 Products [GSZ160361B\* , CA\*F4860\*6D\*+TXV, GM9C961004CNA\*], SEER 15.0 , EER 12.5 , HSPF 8.5



At Goodman, we believe in American dependability. Units are designed, engineered and assembled in the U.S.A.



## Submittal Data Sheet

15.0 SEER, Heat Pump System, 3.0 Ton, Outdoor Unit-GSZ160361B\*

Submitted By : Goodman/Amana Unitary Test System

Submitted To : N/A

Tags : AHRI 207349838 Products [GSZ160361B\* , CA\*F4860\*6D\*+TXV, GM9C961004CNA\*] , SEER 15.0 , EER 12.5 , HSPF 8.5

### STANDARD FEATURES:

- All-Aluminum evaporator coil
- Optimized for use with R-410A refrigerant
- Check flowrator for cooling and heat pump applications
- Vertical application
- 21" depth for easier attic access
- Galvanized, leather grain-embossed finish
- Rust resistant, thermoplastic drain pans featuring a low water-retention design
- AHRI certified
- ETL Listed

### CABINET FEATURES:

- Twenty one inch depth for easier attic access
- Split seam front for easy access
- Foil-faced insulation covers the internal casing to reduce cabinet condensation
- Galvanized, leather grain-embossed finish



At Goodman, we believe in American dependability. Units are designed, engineered and assembled in the U.S.A.



Submittal Data Sheet

15.0 SEER, Heat Pump System,3.0 Ton, Outdoor Unit-GSZ160361B\*

Submitted By : Goodman/Amana Unitary Test System

Submitted To : N/A

Tags : AHRI 207349838 Products [GSZ160361B\* , CA\*F4860\*6D\*+TXV, GM9C961004CNA\*] , SEER 15.0 , EER 12.5 , HSPF 8.5

INDOOR UNIT DETAILS : CAPF4860C6D\*

|                           |              |                                |     |
|---------------------------|--------------|--------------------------------|-----|
| Dimensions (HxWxD) (in) : | 30 x 21 x 21 | Suction Connection Size (in) : | 7/8 |
| Net Weight (lb):          | 65           | Liquid Connection Size (in) :  | 3/8 |
| Gross Weight (lb):        | 67           | Condensate Connection (in) :   | 3/4 |
| Power Voltage (lb):       | -            | Current Type :                 | -   |
| Power Phase:              | -            | Power Frequency :              | -   |
| Min Voltage :             | -            | Max Voltage :                  | -   |
| MCA :                     | -            | MOP :                          | -   |
| Electric Heat Range :     | -            | Indoor Blower FLA :            | -   |
| Fan Motor Output :        | -            | Outdoor Fan LRA :              | -   |



At Goodman, we believe in American dependability. Units are designed, engineered and assembled in the U.S.A.



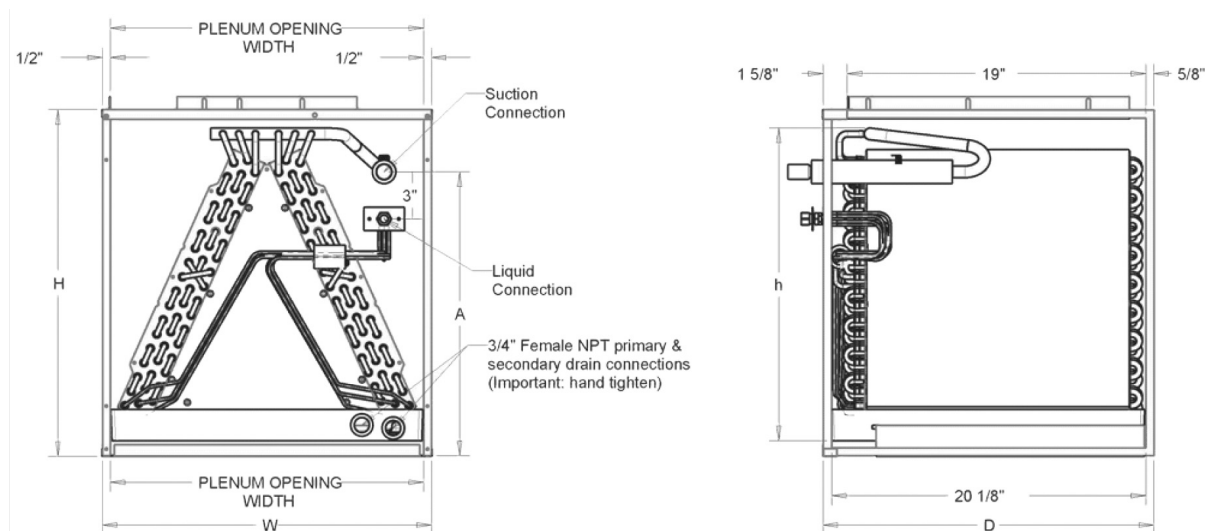
## Submittal Data Sheet

15.0 SEER, Heat Pump System, 3.0 Ton, Outdoor Unit-GSZ160361B\*

Submitted By : Goodman/Amana Unitary Test System

Submitted To : N/A

Tags : AHRI 207349838 Products [GSZ160361B\* , CA\*F4860\*6D\*+TXV, GM9C961004CNA\*], SEER 15.0 , EER 12.5 , HSPF 8.5



At Goodman, we believe in American dependability. Units are designed, engineered and assembled in the U.S.A.



## Submittal Data Sheet

15.0 SEER, Heat Pump System,3.0 Ton, Outdoor Unit-GSZ160361B\*

Submitted By : Goodman/Amana Unitary Test System

Submitted To : N/A

Tags : AHRI 207349838 Products [GSZ160361B\* , CA\*F4860\*6D\*+TXV, GM9C961004CNA\*] , SEER 15.0 , EER 12.5 , HSPF 8.5

### STANDARD FEATURES:

- DATA IS NOT AVAILABLE

### CABINET FEATURES:

- DATA IS NOT AVAILABLE

**Data Missing**



At Goodman, we believe in American dependability. Units are designed, engineered and assembled in the U.S.A.



Submittal Data Sheet

15.0 SEER, Heat Pump System,3.0 Ton, Outdoor Unit-GSZ160361B\*

Submitted By : Goodman/Amana Unitary Test System

Submitted To : N/A

Tags : AHRI 207349838 Products [GSZ160361B\* , CA\*F4860\*6D\*+TXV, GM9C961004CNA\*] , SEER 15.0 , EER 12.5 , HSPF 8.5

INDOOR FURNACE UNIT DETAILS : GM9C961004CNA\*

|                                       |          |   |                  |
|---------------------------------------|----------|---|------------------|
| Power Supply (V/Hz/Ph):               | 115/60/1 | Temperature Rise Range High Fire (° F): | 35-65            |
| Min. Circuit Amps MCA (A):            | 14.1     | Temperature Rise Range Low Fire (° F):  | 35-65            |
| Max Overcurrent Protection (MOP) (A): | 20       | High Fire Input Capacity :              | 100000           |
| AFUE :                                | 96       | High Fire Output Capacity :             | 96000            |
| Vent Diameter (In):                   | 4        | Low Fire Input Capacity :               | 70000            |
| Net Weight (lb):                      | 140      | Low fire output Capacity :              | 67200            |
| Gross Weight (lb):                    | 142      | Dimensions (HxWxD) (in):                | 33-3/8 x 21 x 28 |
| Power Voltage (lb):                   | 115      | Current Type :                          | -                |
| Power Phase:                          | 1        | Power Frequency :                       | 60               |
| Min Voltage :                         | -        | Max Voltage :                           | -                |
| MCA :                                 | 14.1     | MOP :                                   | 20               |
| Electric Heat Range :                 | -        | Indoor Blower FLA :                     | -                |
| Fan Motor Output :                    | -        | Outdoor Fan LRA :                       | -                |



At Goodman, we believe in American dependability. Units are designed, engineered and assembled in the U.S.A.





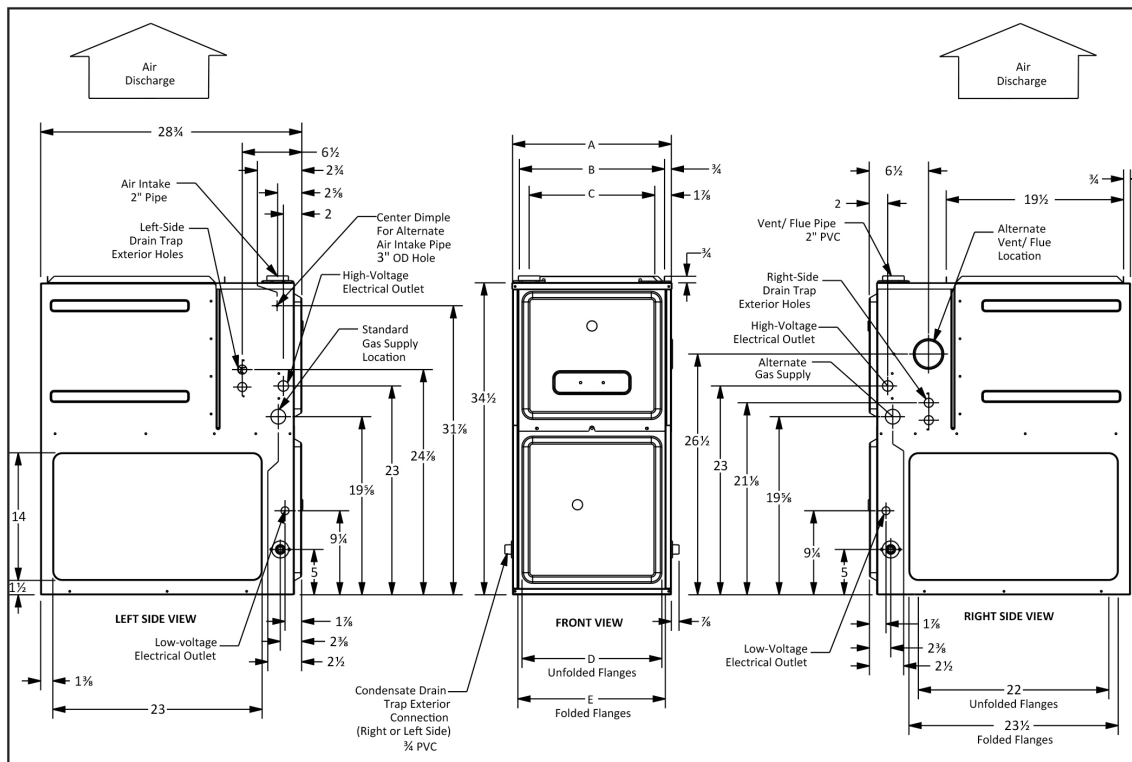
## Submittal Data Sheet

15.0 SEER, Heat Pump System, 3.0 Ton, Outdoor Unit-GSZ160361B\*

Submitted By : Goodman/Amana Unitary Test System

Submitted To : N/A

Tags : AHRI 207349838 Products [GSZ160361B\* , CA\*F4860\*6D\*+TXV, GM9C961004CNA\*] , SEER 15.0 , EER 12.5 , HSPF 8.5



| MODEL         | AIR DISCHARGE |         |         | AIR RETURN |         |
|---------------|---------------|---------|---------|------------|---------|
|               | A             | B       | C       | D          | E       |
| GM9C960303ANA | 14"           | 12 1/2" | 10 1/2" | 8 5/8"     | 10 5/8" |
| GM9C960403ANA | 14"           | 12 1/2" | 10 1/2" | 8 5/8"     | 10 5/8" |
| GM9C960603ANA | 14"           | 12 1/2" | 10 1/2" | 8 5/8"     | 10 5/8" |
| GM9C960603BNA | 17 1/2"       | 16"     | 13 3/8" | 12 1/8"    | 13 3/8" |
| GM9C960803BNA | 17 1/2"       | 16"     | 13 3/8" | 12 1/8"    | 13 3/8" |
| GM9C960804CNA | 21"           | 19 1/2" | 17 3/8" | 16"        | 17 1/2" |
| GM9C961004CNA | 21"           | 19 1/2" | 17 3/8" | 16"        | 17 1/2" |
| GM9C961005CNA | 21"           | 19 1/2" | 17 3/8" | 16"        | 17 1/2" |
| GM9C961205DNA | 24 1/2"       | 23"     | 20 7/8" | 19 3/8"    | 20 7/8" |

### MINIMUM CLEARANCES TO COMBUSTIBLE MATERIALS

| POSITION   | SIDES | REAR | FRONT | BOTTOM | FLUE | TOP |
|------------|-------|------|-------|--------|------|-----|
| Upflow     | 0"    | 0"   | 3"    | C      | 0"   | 1"  |
| Horizontal | 6"    | 0"   | 3"    | C      | 0"   | 6"  |

C = If placed on combustible floor, the floor MUST be wood ONLY.



re

