

F

E

D

C

B

A

F

E

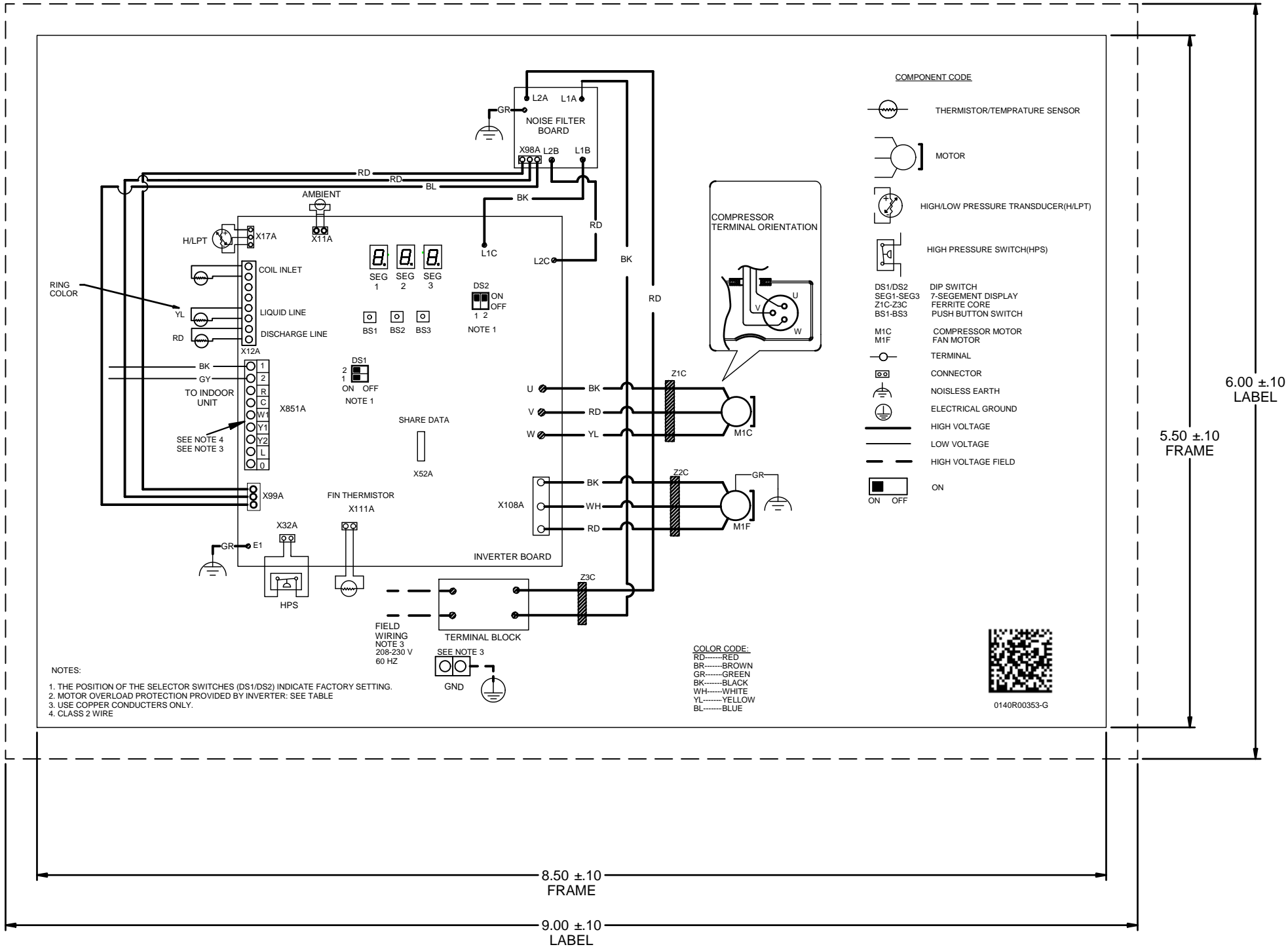
D

C

B

A

ECN	REV	ZONE	DESCRIPTION	CHK	DR	DATE
1408668	A	TAB	INITIAL RELEASE	DTM	IS	02-05-14
1408848	B	SHT 2	ADDED NOTE 4 & ADDED "SEE NOTE 4" CALLOUT (C7)	SK	IS	03-26-14
1510546	C	TAB	AC MODEL AVXC WAS ASXV UPDATED DRAWING FORMAT	SK	IS	05-15-15
1714193	D	ALL B6 B3 A9 D8	UPDATED DRAWING FORMAT & NOTES TO REFLECT CURRENT STANDARDS ALIGNED TEXT VERTICALLY REMOVED "SEE NOTE 3" CALLOUT REMOVED NOTE 1,2,3 & ADDED NOTE 4 ADDED CALLOUT "SEE NOTE 3"	SK	HCL-BB	06-22-17
1919133	E	ALL B5 C5 B9,F4	UPDATED SHEET FORMAT 0140R00353-E WAS 0140R00353-D ADDED MODEL GVXC200481 ADDED DIM ".25 TYP."	SK	RS	10-24-19
2020124	F		1. INVERTER MODEL 3P357343-4 (4T) WAS EC13008-1 (2T) (C6) 2.ON/OFF COMPONENT CODE ADDED (D5) 3. REMOVED DIM .25 TYP (B9,F4)	SK	HCL-VN MFL	03-30-20
2020673	G1		1. UPDATED DRAWING FORMAT 2. REMOVED TABLE (C5)		MFL RS	07-14-20



NOTES:

1. REMOVED.
2. REMOVED.
3. REMOVED.
4. WIRING DIAGRAM LABELS MUST COMPLY WITH GOODMAN SPECIFICATION S4900149 - WIRING DIAGRAM LABEL SPECIFICATION.

SPECIAL CHARACTERISTICS: (REFER MSP 822-01 FOR DETAILS)

⊠ = CRITICAL CHARACTERISTIC REQUIRES AN INITIAL CPK OF 1.33 AND USE OF STATISTICAL PROCESS CONTROL.

⊡ = SIGNIFICANT CHARACTERISTIC REQUIRES AN INITIAL CPK OF 1.00 AND USE OF STATISTICAL PROCESS CONTROL. INABILITY TO MEET THE REQUIRED INITIAL CPK VALUE WILL REQUIRE 100% INSPECTION.

COMPONENTS AND MATERIALS SPECIFIED HEREIN WILL ALSO CONFORM TO THE APPLICABLE SECTION OF GOODMAN MSP 860-01 WORKMANSHIP STANDARD.

CONFIDENTIAL PROPERTY OF GOODMAN MANUFACTURING COMPANY, L.P. OR ITS AFFILIATES NOT TO BE DISCLOSED TO OTHERS, COPIED, OR USED FOR ANY PURPOSE EXCEPT AS AUTHORIZED IN WRITING. MUST BE RETURNED UPON DEMAND, ON COMPLETION OF ORDER, OR OTHER PURPOSE FOR WHICH IT WAS LENT.

GOODMAN MANUFACTURING COMPANY, L.P.

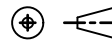
DRAWING TO BE INTERPRETED IN ACCORDANCE WITH ASME Y14.100

DIMENSIONS ARE IN INCHES UNLESS OTHERWISE NOTED

TOLERANCES UNLESS OTHERWISE NOTED  
ANGLES ± 1.5°  
.X : ± .1  
.XX : ± .03  
.XXX : ± .015  
HOLE Ø : ± .005  
TUBE CUT LG : ± .063

DWN BY: IS

CHK BY: SK



ENG: RM

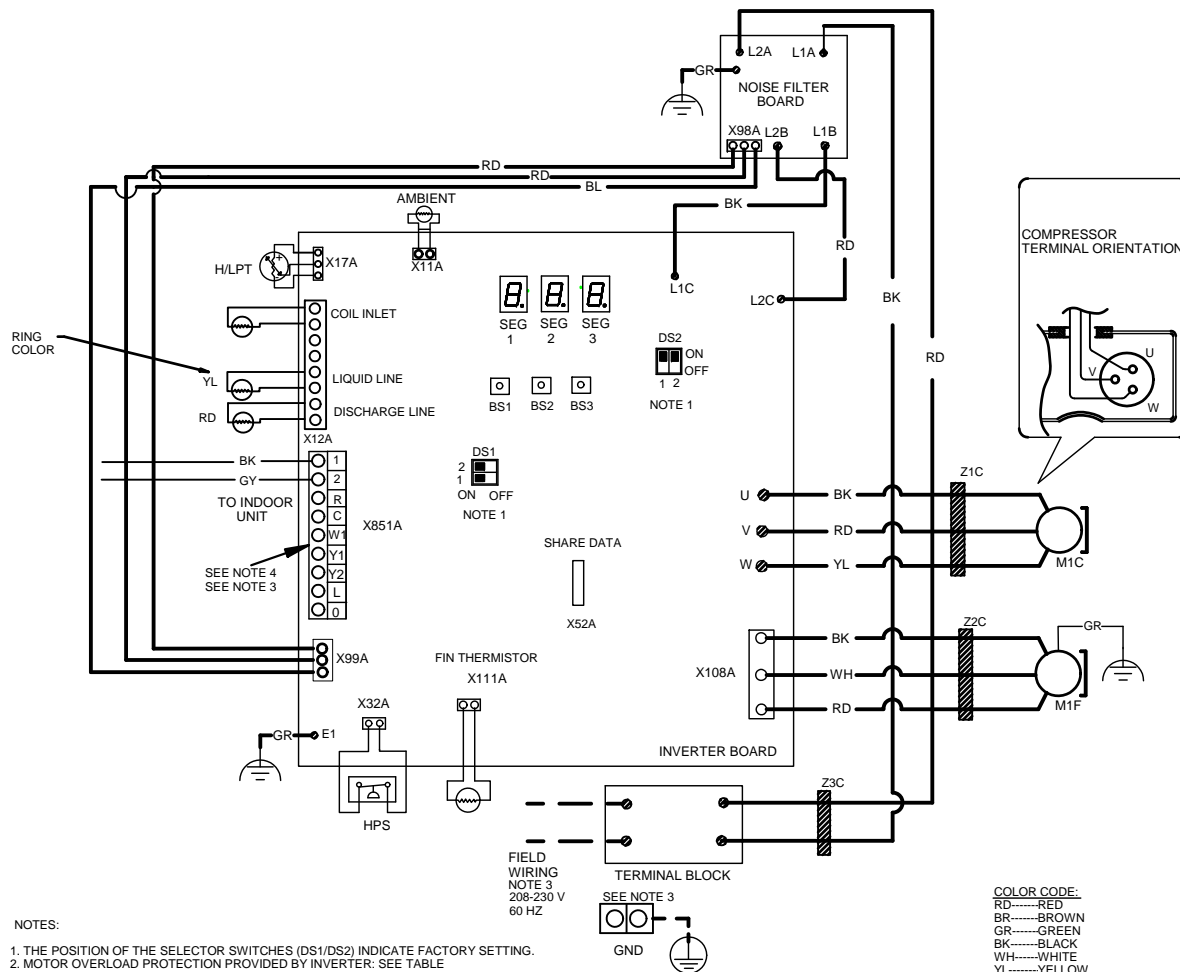
DATE: 02-05-14

0140R00353

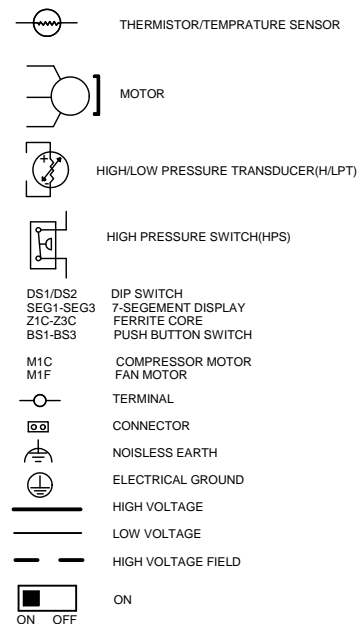
DO NOT SCALE DRAWING

SHT 1 OF 2

REV  
G



# COMPONENT CODE



## NOTES:

1. THE POSITION OF THE SELECTOR SWITCHES (DS1/DS2) INDICATE FACTORY SETTING.
2. MOTOR OVERLOAD PROTECTION PROVIDED BY INVERTER: SEE TABLE
3. USE COPPER CONDUCTORS ONLY.
4. CLASS 2 WIRE

COLOR CODE:  
 RD-----RED  
 BK-----BLACK  
 GR-----GREEN  
 WH-----WHITE  
 YL-----YELLOW  
 BL-----BLUE



0140R00353-G