

Submittal Data Sheet

15.0 SEER, Air Conditioner System, 2.0 Ton, Outdoor Unit-GSX160241F*

Submitted By : Goodman/Amana Unitary Test System

Submitted To : N/A

Tags : AHRI 202371915 Products [GSX160241F* , CA*FA2422*6A* , GMEC960603BNA*] , SEER 15.0 , EER 12.5

STANDARD FEATURES:

- High-efficiency compressor
- Single-speed PSC condenser fan motor
- Factory-installed filter drier
- Fully charged for fifteen feet of tubing length
- Contactor with lug connection
- AHRI Certified - ETL Listed
- Ground lug connection
- Copper tube & enhanced aluminum fin coil

CABINET FEATURES:

- Heavy-gauge galvanized steel cabinet and louvered coil guards
- Service valves with sweat connections and easy-access gauge ports
- Engineered sound control top design
- Baked-on powder-paint finish with 500-hour salt-spray approval
- Single-panel access to controls with space for field-installed accessories
- Service port and controls are accessible while unit is operating
- Compact footprint
- Rust-resistant screws
- When properly anchored, meets the 2017 Florida Building Code unit integrity requirements for hurricane-type winds (Anchor bracket kits available.)



At Goodman, we believe in American dependability. Units are designed, engineered and assembled in the U.S.A.



Submittal Data Sheet

15.0 SEER, Air Conditioner System,2.0 Ton, Outdoor Unit-GSX160241F*

Submitted By : Goodman/Amana Unitary Test System

Submitted To : N/A

Tags : AHRI 202371915 Products [GSX160241F* , CA*FA2422*6A* , GMEC960603BNA*] , SEER 15.0 , EER 12.5

SYSTEM PERFORMANCE

Outdoor Unit Model No.:	GSX160241F*	Description :	15.0 SEER, Air Conditioner System, 2.0 Ton Outdoor System
Indoor Unit Model No.:	CAPFA2422B6A*		
TXV/PISTON :	0.057		
Furnace Unit Model No.:	GMEC960603BN		
Rated Cooling Conditions:	Outdoor (°F DB/WB):95/75 Indoor (°F DB/WB):80/67	Rated Heating Conditions:	Outdoor (°F DB/WB):N/A/N/A Indoor (°F DB/WB):N/A/N/A
Rated Cooling Capacity (Btu/hr):	23600	OD Rated Heating Capacity (Btu/hr)	N/A See Furnace Details
EER:	12.5	Heating COP:	N/A
SEER:	15.0	AFUE:	96

OUTDOOR UNIT DETAILS : GSX160241F*

Power Supply (V/Hz/Ph):	208/230/60/1	Compressor Type:	Scroll
Min. Circuit Amps MCA (A):	17.8	Compressor Stages:	Single Stage
Max Overcurrent Protection (MOP) (A):	30	Suction Valve Connection Size (in):	3/4
Compressor Rated Load Amps :	13.5	Liquid Valve Connection Size (in):	3/8
Refrigerant Type:	R-410A	Sound Power(High/Med/Low) (dBA):	72 / - / N/A
Holding Refrigerant Charge (oz):	70	Cooling Operation Range (°F DB):	55 - 125
Additional Charge (oz/ft):	0.60	Heating Operation Range (°F DB):	N/A
Pre-charge Piping (Length) (ft):	15	Net Weight (lb):	142
Dimensions (HxWxD) (in):	32-1/2 x 29-1/4 x 29-1/4	Gross Weight (lb):	158
*Max. Pipe Length (Vertical) (ft):	50	*Max. Pipe Length (Total) (ft):	80

**Refer to Long Line Set Application TP-107 for lines greater than 80 ft. or vertical elevation changes more than 50 ft. for single stage equipment and 25 ft. for 2-stage equipment.*



At Goodman, we believe in American dependability. Units are designed, engineered and assembled in the U.S.A.



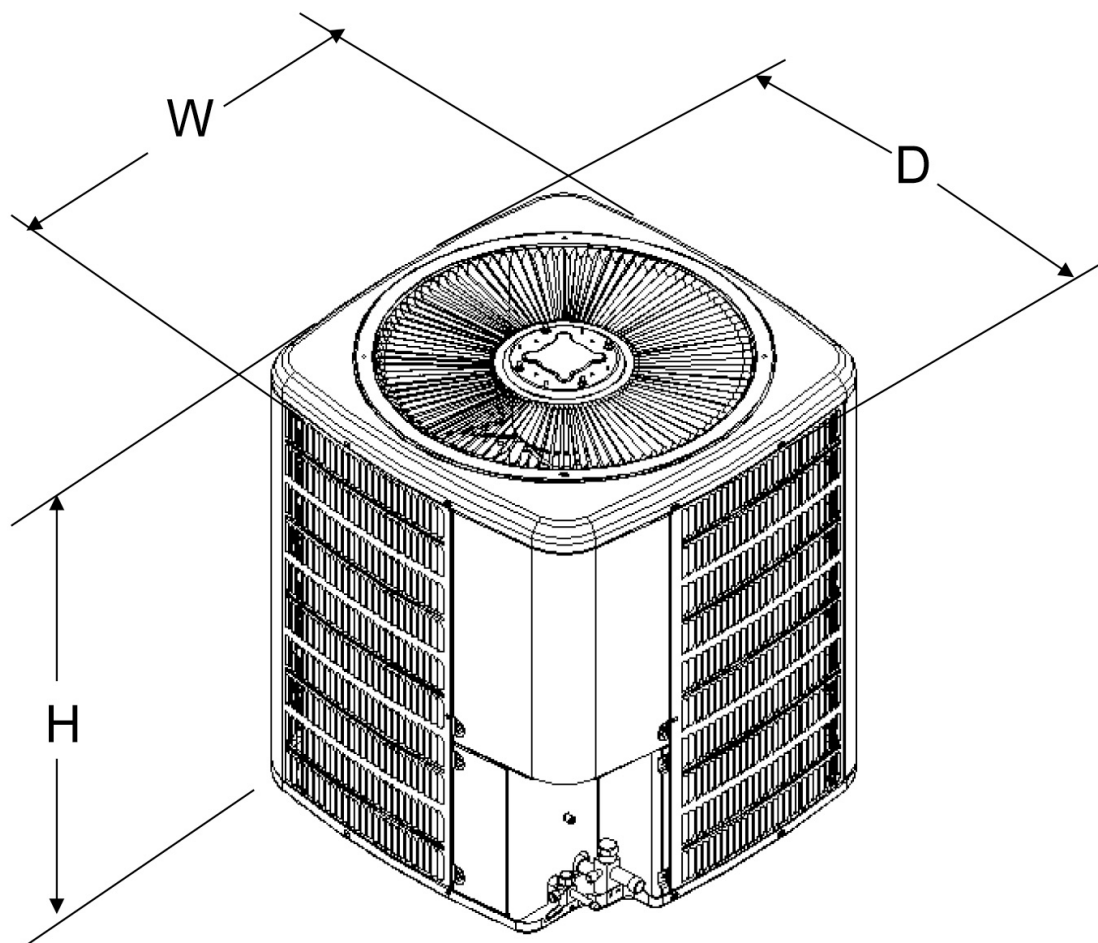
Submittal Data Sheet

15.0 SEER, Air Conditioner System, 2.0 Ton, Outdoor Unit-GSX160241F*

Submitted By : Goodman/Amana Unitary Test System

Submitted To : N/A

Tags : AHRI 202371915 Products [GSX160241F* , CA*FA2422*6A* , GMEC960603BNA*] , SEER 15.0 , EER 12.5



At Goodman, we believe in American dependability. Units are designed, engineered and assembled in the U.S.A.



Submittal Data Sheet

15.0 SEER, Air Conditioner System, 2.0 Ton, Outdoor Unit-GSX160241F*

Submitted By : Goodman/Amana Unitary Test System

Submitted To : N/A

Tags : AHRI 202371915 Products [GSX160241F* , CA*FA2422*6A* , GMEC960603BNA*] , SEER 15.0 , EER 12.5

STANDARD FEATURES:

- All-Aluminum evaporator coil
- Optimized for use with R-410A refrigerant
- Some models suitable for use with R-410A or R-22 refrigerant
- CAPT models feature factory-installed thermal expansion valves for cooling and heat pump applications
- Check flowrator for cooling and heat pump applications
- Vertical and horizontal models available
- 21" depth for easier attic access
- Foil-faced insulation covers the internal casing to reduce cabinet condensation
- Galvanized, leather grain-embossed finish
- Rust resistant, thermoplastic drain pans featuring a low water-retention design
- DecaBDE-free thermoplastic drain pan with secondary drain connections
- UV-resistant drain pan
- AHRI certified
- ETL listed

Data Missing

CABINET FEATURES:

- **DATA IS NOT AVAILABLE**



At Goodman, we believe in American dependability. Units are designed, engineered and assembled in the U.S.A.



Submittal Data Sheet

15.0 SEER, Air Conditioner System,2.0 Ton, Outdoor Unit-GSX160241F*

Submitted By : Goodman/Amana Unitary Test System

Submitted To : N/A

Tags : AHRI 202371915 Products [GSX160241F* , CA*FA2422*6A* , GMEC960603BNA*] , SEER 15.0 , EER 12.5

INDOOR UNIT DETAILS : CAPFA2422B6A*

Dimensions (HxWxD) (in) :	22 x 17.5 x 21	Suction Connection Size (in) :	3/4
Net Weight (lb):	40	Liquid Connection Size (in) :	3/8
Gross Weight (lb):	43	Condensate Connection (in) :	3/4



At Goodman, we believe in American dependability. Units are designed, engineered and assembled in the U.S.A.



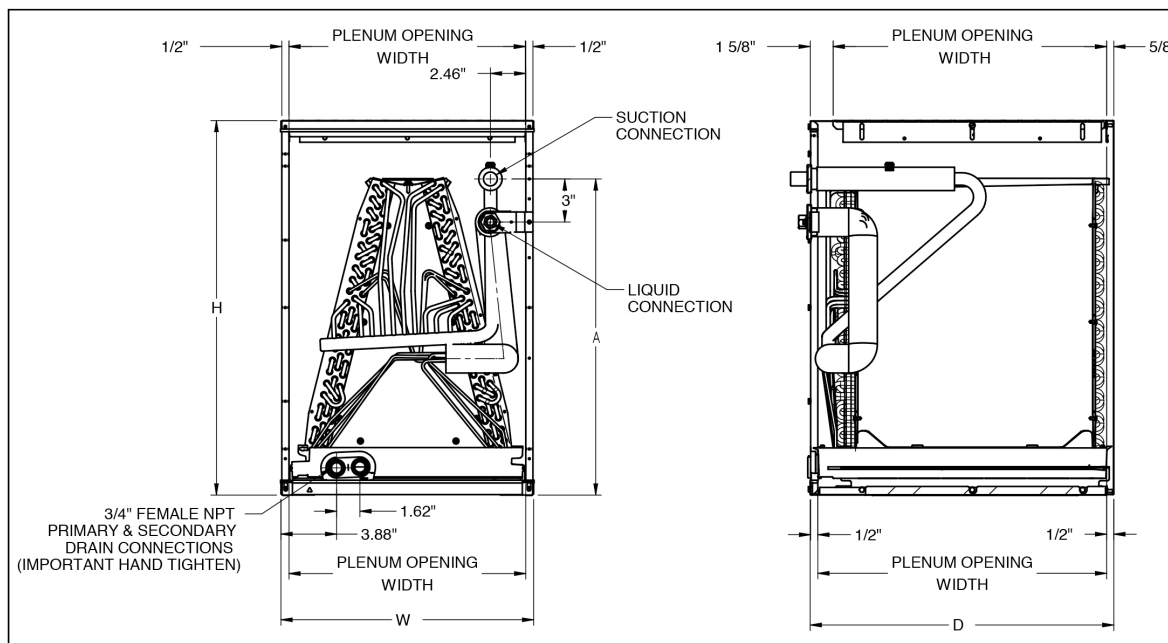
Submittal Data Sheet

15.0 SEER, Air Conditioner System, 2.0 Ton, Outdoor Unit-GSX160241F*

Submitted By : Goodman/Amana Unitary Test System

Submitted To : N/A

Tags : AHRI 202371915 Products [GSX160241F* , CA*FA2422*6A* , GMEC960603BNA*] , SEER 15.0 , EER 12.5



At Goodman, we believe in American dependability. Units are designed, engineered and assembled in the U.S.A.



Submittal Data Sheet

15.0 SEER, Air Conditioner System, 2.0 Ton, Outdoor Unit-GSX160241F*

Submitted By : Goodman/Amana Unitary Test System

Submitted To : N/A

Tags : AHRI 202371915 Products [GSX160241F* , CA*FA2422*6A* , GMEC960603BNA*] , SEER 15.0 , EER 12.5

STANDARD FEATURES:

- Heavy-duty aluminized-steel tubular heat exchanger
- Stainless-steel sloped secondary heat exchanger
- Silicon Nitride igniter
- Color-coded low-voltage terminals
- Two-Stage gas valve
- Multi-speed ECM blower motor with continuous fan speed
- All models comply with California 40 ng/J
- Fault code LED Output
- AHRI Certified - ETL Listed
- Energy Star
- Two-stage gas valve
- Furnace control board with self-diagnostics and provisions for electronic air cleaner and 120-volt or 24-volt humidifiers

CABINET FEATURES:

- Multi-position installation: upflow, horizontal left or right
- Certified for direct vent (2-pipe) or non-direct vent (1 pipe)
- Easy to install top venting with optional side vent
- Convenient left or right connection for gas and electrical service
- Cabinet air leakage (Qleak) less than or equal to 2%
- Fully insulated heat exchanger and blower section
- Bottom or side return air applications
- Heavy-gage steel cabinet with durable finish



At Goodman, we believe in American dependability. Units are designed, engineered and assembled in the U.S.A.



Submittal Data Sheet

15.0 SEER, Air Conditioner System,2.0 Ton, Outdoor Unit-GSX160241F*

Submitted By : Goodman/Amana Unitary Test System

Submitted To : N/A

Tags : AHRI 202371915 Products [GSX160241F* , CA*FA2422*6A* , GMEC960603BNA*] , SEER 15.0 , EER 12.5

INDOOR FURNACE UNIT DETAILS : GMEC960603BNA*

Power Supply (V/Hz/Ph):	115/60/1	Temperature Rise Range High Fire (° F):	35-65
Min. Circuit Amps MCA (A):	7.5	Temperature Rise Range Low Fire (° F):	25-55
Max Overcurrent Protection (MOP) (A):	15	High Fire Input Capacity :	60000
AFUE :	96	High Fire Output Capacity :	57600
Vent Diameter (In):	2;3	Low Fire Input Capacity :	42000
Net Weight (lb):	-	Low fire output Capacity :	40320
Gross Weight (lb):	117	Dimensions (HxWxD) (in):	34-1/2 x 17-1/2 x 29



At Goodman, we believe in American dependability. Units are designed, engineered and assembled in the U.S.A.



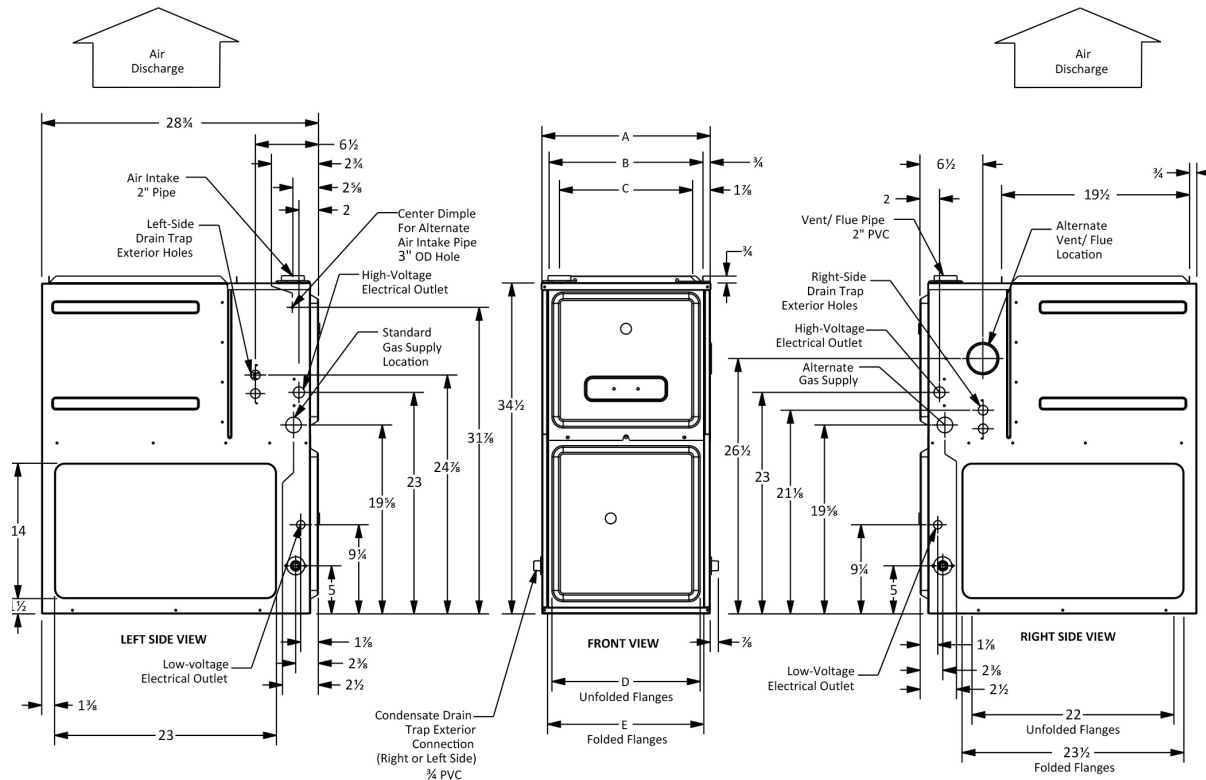
Submittal Data Sheet

15.0 SEER, Air Conditioner System, 2.0 Ton, Outdoor Unit-GSX160241F*

Submitted By : Goodman/Amana Unitary Test System

Submitted To : N/A

Tags : AHRI 202371915 Products [GSX160241F* , CA*FA2422*6A* , GMEC960603BNA*] , SEER 15.0 , EER 12.5



At Goodman, we believe in American dependability. Units are designed, engineered and assembled in the U.S.A.

