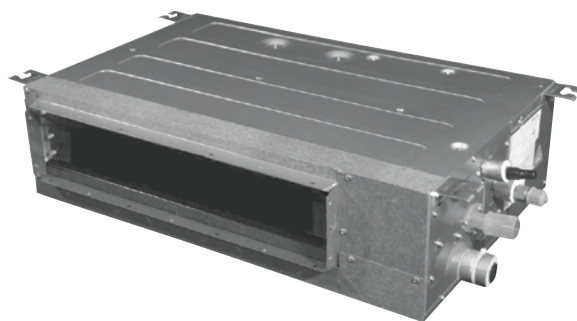


## SINGLE ZONE • THE INSIDER® CONCEALED DUCTED HEAT PUMPS

Indoor unit is installed in the ceiling or furr down, totally concealed, for unobtrusive installation.

### Features

- Precision Inverter® technology (variable speed compressor)
- Soft start compressor
- BLDC motor
- Cooling/Heating/Fan mode
- Dry mode
- 3 fan speeds
- Auto restart
- Auto changeover
- DiamonGold Advanced Corrosion Protection™
- Control lock function on controller
- External Static Pressure Range 0-.40



### Operates in extreme conditions

- Built-in low ambient, down to 5°F on 9k/12k/18k models, down to -4°F on 24k/36k models (Cooling mode)
- Low ambient operation down to -4°F (Heating mode)



## PRO SERIES SPECIFICATIONS

PERFORMANCE RATINGS		Single Zone - The Insider™ Concealed Ducted Heat Pumps				
SYSTEM MODEL NO.		FPHD093	FPHD123	FPHD183	FPHD243	FPHD363
INDOOR MODEL		FPHFD09A3A	FPHFD12A3A	FPHFD18A3A	FPHFD24A3A	FPHSD36A3A
OUTDOOR MODEL		FPHFR09A3A	FPHFR12A3A	FPHFR18A3A	FPHFR24A3A	FPHFR36A3A
SPECIFICATIONS						
CAPACITY COOLING (RATED)	Btu	9000	12000	18000	24000	36000
CAPACITY COOLING (MIN-MAX)	Btu	4850-11600	5800-13100	8000-19200	8600-25200	12600-36800
CAPACITY HEATING @47°F (RATED)	Btu	9000	12000	18000	24000	36000
CAPACITY HEATING @17°F (RATED)	Btu	6200	8200	14700	19600	22000
CAPACITY HEATING (MIN-MAX)	Btu	4340-12280	6000-14400	7000-21200	7600-28400	15000-42600
SENSIBLE HEAT RATIO		76%	76%	76%	76%	76%
SEER		17	19	19	18	18
EER		12	11	12.2	12.5	10.9
COP (@47°F)		3.2	3.2	3.4	3.6	3
HSPF		10.00	10.00	10.00	10.00	9.50
ENERGY STAR		—	—	—	—	—
MOISTURE REMOVAL	Pts/h	2	3	5	5.1	7.61
AIRFLOW (LOW, MED, HIGH )	CFM	235/285/309	235/285/338	370/440/529	501/574/647	618/735/853
SOUND RATING - INDOOR H/M/L	dB(A)	29/27/26	36/33/30	38/35/33	38/36/34	49/43/39
SOUND RATING - OUTDOOR	dB(A)	52	54	68	54	61
OPERATING RANGE (COOLING)	°F	5-118	5-118	5-118	-4-118	-4-118
OPERATING RANGE (HEATING)	°F	-4-75	-4-75	-4-75	-4-75	-4-75
EST. YEARLY OPERATING COST	\$	53	72	124	169	376
ELECTRICAL DATA						
POWER SOURCE		230/208-60-1	230/208-60-1	230/208-60-1	230/208-60-1	230/208-60-1
MINIMUM AMPACITY	A	23.0	23.0	23.0	23.0	4.6
COOLING WATTS	W	750	1091	1610	2200	3300
COOLING AMPS		3.7	4.8	7.0	8.6	14.4
HEATING AMPS		4.1	4.8	7.3	8.7	15.2
MAX. TD FUSE/BREAKER	A	20	30	30	30	50
POWER AND COMMUNICATION CABLE	No. x AWG	4 x 14AWG	4 x 14AWG	4 x 14AWG	4 x 14AWG	4 x 14AWG
REFRIGERATION SYSTEM						
REFRIGERANT		R410a	R410a	R410a	R410a	R410a
COMPRESSOR TYPE		Rotary	Rotary	Rotary	Rotary	Rotary
CONNECTIONS		Flare	Flare	Flare	Flare	Flare
LIQUID LINE O.D.	in	1/4	1/4	1/4	3/8	3/8
SUCTION LINE O.D.	in	3/8	3/8	1/2	5/8	3/4
FACTORY PRECHARGE	ft	25	25	25	25	25
REFRIGERANT CHARGE	oz	33.5	45.9	56.5	75.3	111
MIN./MAX. LINE LENGTH	ft	10-82	10-82	10-98	25-164	25-164
MAX. HEIGHT DIFFERENCE	ft	33	49	49	98	98
DIMENSIONS & WEIGHT						
INDOOR UNIT						
W X H X D	in	35 7/8 x 7 1/2 x 17 5/8	35 7/8 x 7 1/2 x 17 5/8	48 7/16 x 7 1/2 x 17 5/8	39 x 10 5/8 x 30	55 x 8 3/4 x 33
NET WEIGHT	lbs	39.7	39.7	49.6	70.5	112.5
SHIPPING WEIGHT	lbs	46.3	47.4	56.2	81.6	132.4
OUTDOOR UNIT						
W X H X D	in	37 x 25 x 16 1/2	37 x 25 x 16 1/2	39 x 17 3/4 x 28 3/4	43 x 36 1/4 x 18 1/8	43 x 36 1/4 x 18 1/8
NET WEIGHT	lbs	75	75	108	155	192
SHIPPING WEIGHT	lbs	85	82	117	166	215
TOTAL NET WEIGHT	lbs	107	108	108	214.5	262.5
TOTAL SHIPPING WEIGHT	lbs	123.5	121	158	245.5	305.4

Your operating costs will depend on your utility rates and use. The estimated operating cost is based on a electricity cost of \$.12 per kWh. For more information, visit [www.ftc.gov/energy](http://www.ftc.gov/energy).

Due to continuing research in new energy-saving technology, specifications are subject to change without notice.

