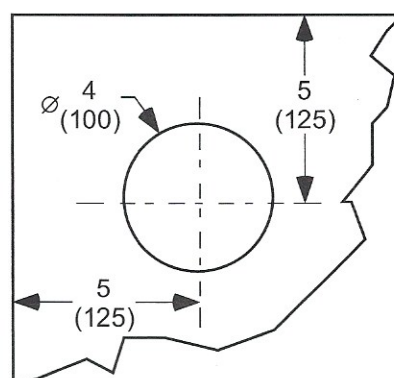
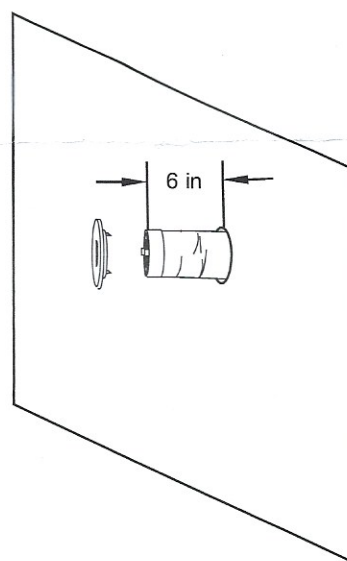


Twist-Fit System™ Outlet Installation Instructions

Step 1: Determine location of outlet in ceiling, wall, or floor and cut a 4 in (100 mm) diameter hole.

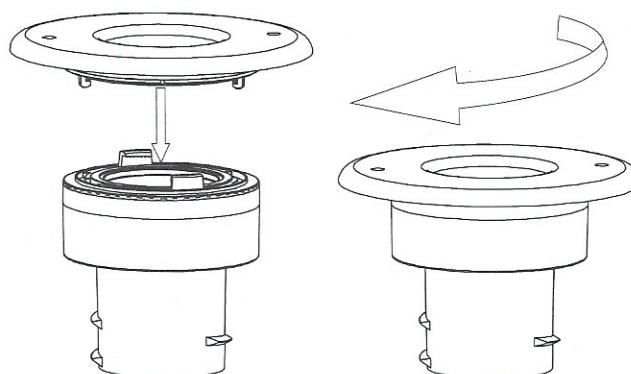


Step 2: Pull Sound Attenuator Duct (UPC-26T) through opening about 6 in (91 cm).



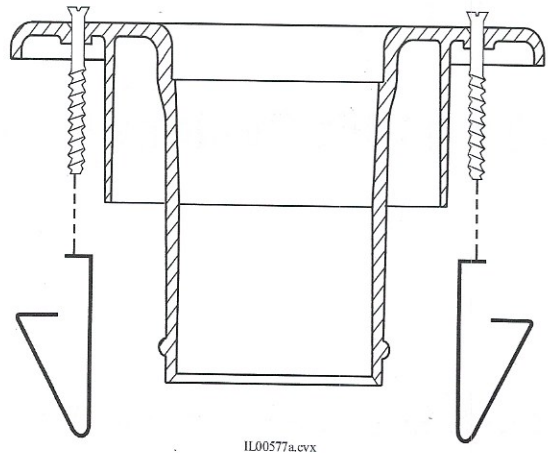
IL00616.CVX

Step 3: Connect the Twist-Fit System Outlet Face Plate to the white duct coupling by aligning the tabs with the slots and turning clockwise to lock into place.

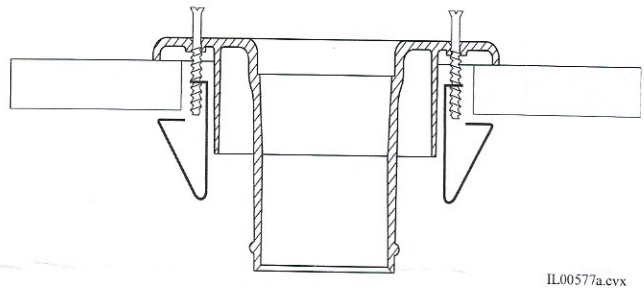


IL00617.CVX

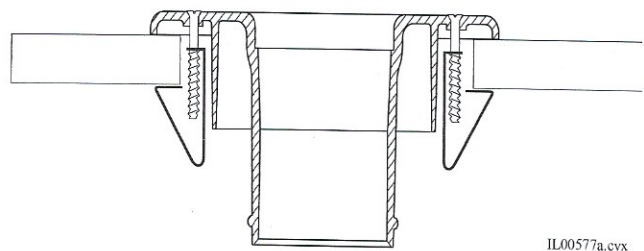
Step 4: Install toggles with screws in face plate mounting holes.



Step 5: Feed duct through hole, forcing the toggles through the hole until they snap over the edge.



Step 6: Tighten screws until Outlet Face Plate is snug against the ceiling, wall, or floor (DO NOT OVERTIGHTEN).



For other installation instructions see Unico Bulletin 30-051 and 30-054.