

Introducing...

QUICK CONNECT REFRIGERANT FITTINGS

Flame FREE! Tool FREE! Problem FREE!



No Brazing

No Tools

No Nitrogen Purge

No Hot Work Safety Concerns

1/4" - 7/8" Sizes



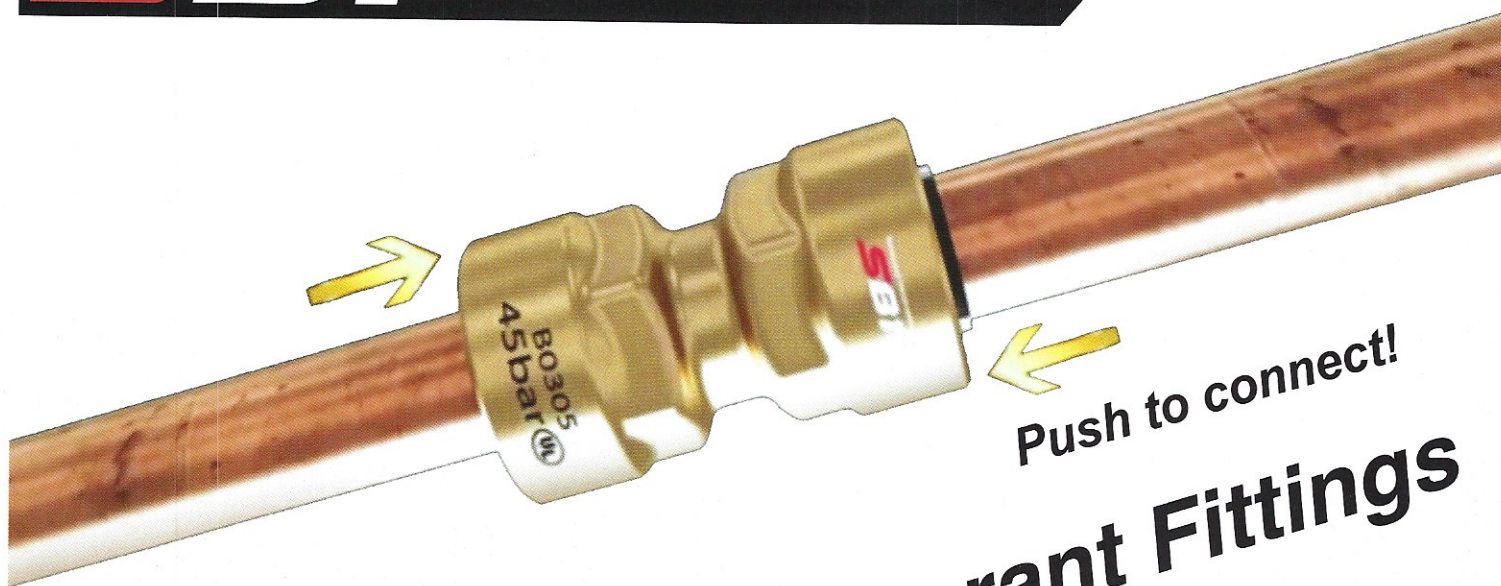
NATIONAL
REFRIGERATION
PRODUCTS

www.nrproducts.com

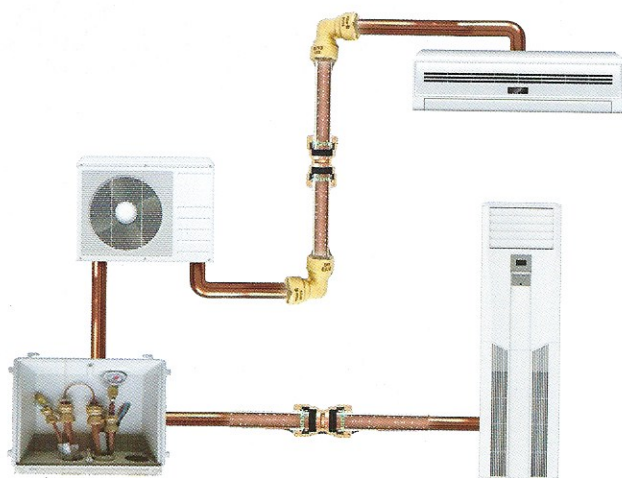
SBI



**Save Time, Money
and Effort**



Quick Connect Refrigerant Fittings For The AC/R Market



***Couplers
Elbows
Flares
Reducers***



← Access Installation Video



Product Offering Specifications

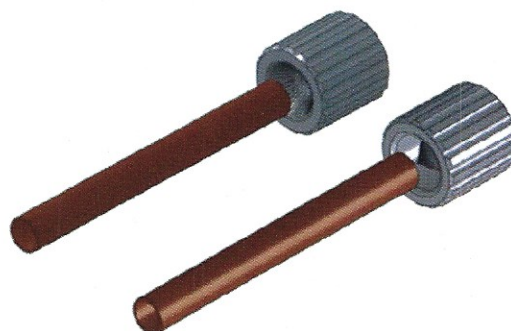
Part No	Description	Individual Wt Wt.	Master Carton Wt.	Master Carton Q'ty
SBC12	1/2" SB1 Coupling	0.128	6.14	48
SBC14	1/4" SB1 Coupling	0.171	17.10	100
SBC38	3/8" SB1 Coupling	0.204	20.40	100
SBC58	5/8" SB1 Coupling	0.235	11.28	48
SBC34	3/4" SB1 Coupling	0.348	8.35	24
SBC78	7/8" SB1 Coupling	0.388	9.31	24
SBE12	1/2" SB1 Elbow 90°	0.139	6.67	48
SBE14	1/4" SB1 Elbow 90°	0.185	18.50	100
SBE38	3/8" SB1 Elbow 90°	0.248	24.80	100
SBE58	5/8" SB1 Elbow 90°	0.282	13.54	48
SBE34	3/4" SB1 Elbow 90°	0.399	9.58	24
SBE78	7/8" SB1 Elbow 90°	0.469	11.26	24
SBCR1238	1/2-3/8" SB1 Reducer Coupling	0.145	6.96	48
SBCR3814	3/8-1/4" SB1 Reducer Coupling	0.187	18.70	100
SBCR5812	5/8-1/2" SB1 Reducer Coupling	0.242	11.62	48
SBE4512	1/2" SB1 Elbow 45°	0.253	12.14	48
SBE4514	1/4" SB1 Elbow 45°	0.141	14.10	100
SBE4538	3/8" SB1 Elbow 45°	0.191	9.17	48
SBE4558	5/8" SB1 Elbow 45°	0.299	7.18	24
SBF12	1/2" SB1 Flare	0.104	4.99	48
SBF14	1/4" SB1 Flare	0.152	15.20	100
SBF38	3/8" SB1 Flare	0.192	19.20	100
SBF58	5/8" SB1 Flare	0.242	11.62	48
			0.00	
SBER1238	1/2-3/8" Reducer Elbow	0.163	7.82	48
SBER3814	3/8-1/4" Reducer Elbow	0.224	22.40	100
SBER5812	5/8-1/2" Reducer Elbow	0.28	13.44	48
SBLM1458	Line Marker 1/4 - 5/8"	0.0551	3.31	60
SBDC1458	Disconnects 1/4 - 5/8"	0.110	6.61	60
SBLMDC3478	Line Marker/Disconnect 3/4-7/8"	0.068	4.08	60

CONNECTING FITTING

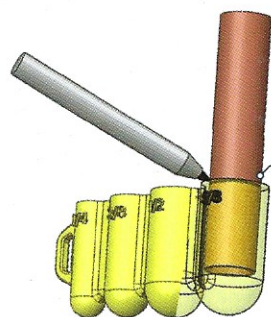
1 Cut the Tube



2 De-burring



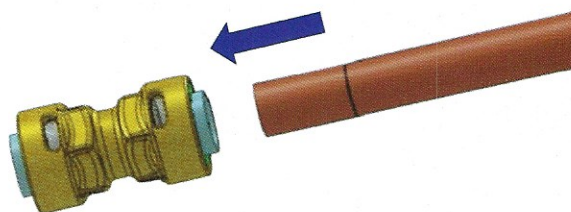
3 Mark the Insertion Depth



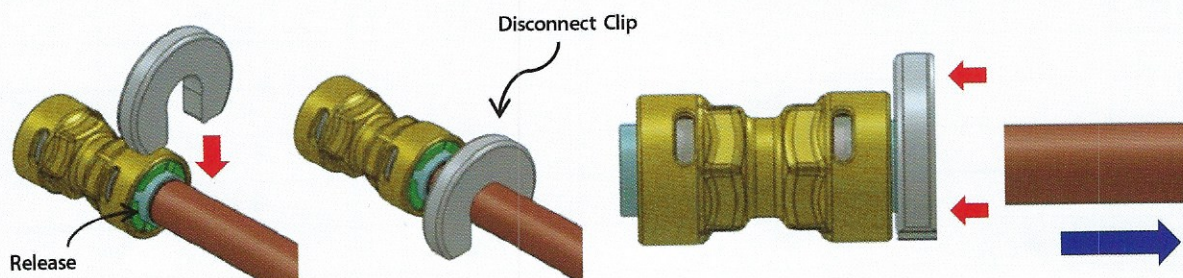
Mark the Line (Push guideline)

Size	Dimensions
1/4"	0.894"
3/8"	0.921"
1/2"	1.004"
5/8"	1.063"

4 Push into Fitting



DISCONNECTING FITTING



Press release with Disconnect clip to remove tubing.

INSTALL CAUTION



Make sure that the fitting and tube are free from defects. The fitting and tubing should be free of damage, foreign object and marks on the outside diameter.



Do not insert fingers in the grip ring inside the fitting. Immediate emergency medical attention may be required for removal.



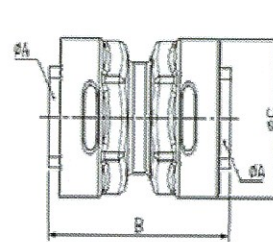
Dimensional Specifications

1/4" - 7/8"

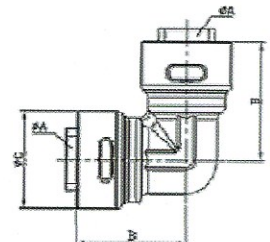
• **COUPLERS** • **FLARES**
• **ELBOWS** • **REDUCERS**

❖ Dimensions

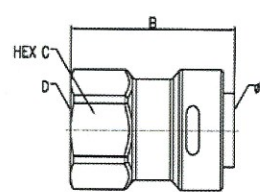
Model Name		Connection	Length	Outer Diameter	Connection
				(HEX)	Thread
		ØA(Inch)	B(Inch)	ØC(Inch)	D(Inch)
SBC14	1/4	0.250	1.890	0.787	None
SBC38	3/8	0.375	1.969	0.945	
SBC12	1/2	0.500	2.126	1.063	
SBC58	5/8	0.625	2.244	1.181	
SBC34	3/4	0.750	2.579	1.457	
SBC78	7/8	0.875	2.618	1.575	
SBE14	1/4	0.250	1.161	0.787	None
SBE38	3/8	0.375	1.260	0.945	
SBE12	1/2	0.500	1.417	1.063	
SBE58	5/8	0.625	1.535	1.181	
SBE34	3/4	0.750	1.732	1.457	
SBE78	7/8	0.875	1.772	1.575	
SBF14	1/4	0.250	1.516	0.669	7/16-20 UNF
SBF38	3/8	0.375	1.634	0.866	5/8-18 UNF
SBF12	1/2	0.500	1.831	0.945	3/4-16 UNF
SBF58	5/8	0.625	2.087	1.063	7/8-14 UNF
SBE4514	1/4	0.250	1.024	-	7/16-20 UNF
SBE4538	3/8	0.375	1.181	-	5/8-18 UNF
SBE4512	1/2	0.500	1.339	-	3/4-16 UNF
SBE4558	5/8	0.625	1.398	-	7/8-14 UNF
Model Name		Connection Pipe			Length
		ØA(Inch)	B(Inch)	ØC(Inch)	D(Inch)
SBCR3814	1/4x3/8	0.250	0.375	1.969	-
SBCR1238	3/8x1/2	0.375	0.500	2.165	-
SBCR5812	1/2x5/8	0.500	0.625	2.362	-
SBER3814	1/4x3/8	0.250	0.375	1.024	1.181
SBER1238	3/8x1/2	0.375	0.500	1.181	1.339
SBER5812	1/2x5/8	0.500	0.625	1.339	1.398



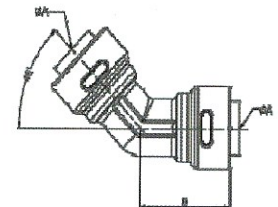
❖ UNION TYPE



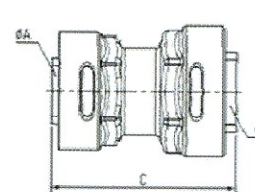
❖ ELBOW TYPE



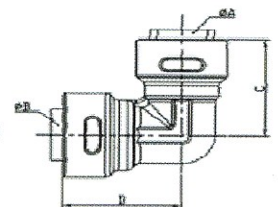
❖ SOCKET TYPE



❖ 45° ELBOW



❖ REDUCE UNION, ELBOW



National Refrigeration Products
1035 Wheeler Way, Langhorne, PA 19047
Ph 215-750-9876 * Fax 215-750-1169
www.nrproducts.com



**NATIONAL
REFRIGERATION
PRODUCTS**



Product Data Specifications

Applications

- Refrigerants
- Glycol
- Non-Potable Water

Product Parameters

- **Continuous Operating Temperature**
250° F / 121° C
- **O-Ring Temperature Rating**
-40° F / 250° F
-40° C / 121° C
- **Maximum Rated Pressure (MRP)**
653 PSI / 45 Bar
- **Minimum Burst Pressure**
2,100 PSI / 145 Bar
- **Vacuum Pressure Capability**
30 Microns

Approved Refrigerants

» R134a	» R500
» R404A	» R22
» R290	» R410A
» R407A	» R32
» R600a	» R407C

Fitting Materials

- **Fitting Body**
C3771, PC (Polycarbonate)
- **O-Ring**
CR (Cholorprene Rubber)

Agency Approvals and Certifications

- **UL Listed**
207, SA #44910
SDTW(7)



Compatibility

- **Tubing Tolerance**
ASTM B280, UNI EN 12735
- **Approved for Hard & Soft Copper:**
 - Hard Copper (Drawn)
1/4" - 7/8" Type ACR, M, L, K
 - Soft Copper (Annealed)
1/4" - 7/8" Type ACR, L, K

Technical Data

Parameters	Capability
Maximum Rated Pressure (MRP)	653 PSI / 45 BAR
Burst Pressure Rating (Minimum)	2,100 PSI / 145 BAR
Vacuum Capacity Rating	30 microns
Continuous Operating Temperature	250° F / 121° C
Vibration Resistance Rating	UL 1963
External Leak Rate	.05 Ounces/yr