

Thru-the-Wall Heat Pumps

**NATIONAL
COMFORT
PRODUCTS®**

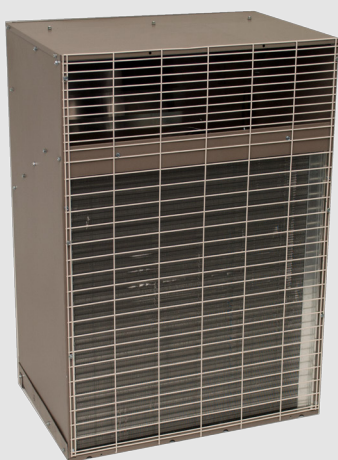
HEATING & A/C EQUIPMENT

All Systems Matched with NCPAH A-Series Air Handler



Heat Pumps

NHPA Series NHPA 5000



***All Units Department
of Energy Listed***

Features

- Units are compatible with NCP Air Handlers or certain other air handlers with ECM motors*
- Available in 1.5, 2.0 and 2.5 Ton Sizes
- up to 13 SEER, 7.6 HSPF
- Heavy-Duty, Water Resistant Cabinet
- R-410A High Efficiency Compressor
- Easy Access Control Box
- Easy Access to Condenser Fan
- Long-Life Fan Motor
- High Efficiency Condenser Coil
- Brass Service Valves

Why Thru-The-Wall?

- Easily Serviced in Any Weather
- Less Expensive Installations
- Ground Clutter Eliminated
- No Theft or Vandalism
- Less Refrigerant Charge
- No Roof Penetration
- Short Copper Tube Runs
- Separate Meter Savings
- Better Appearance

*Please consult the DOE CCMS data base [here](#) for a list of rated combinations of indoor and outdoor units. Combinations of outdoor and indoor units that are not rated will require factory testing and listing with DOE. Please consult the factory.

HEAT PUMP NHPA 5000 Series

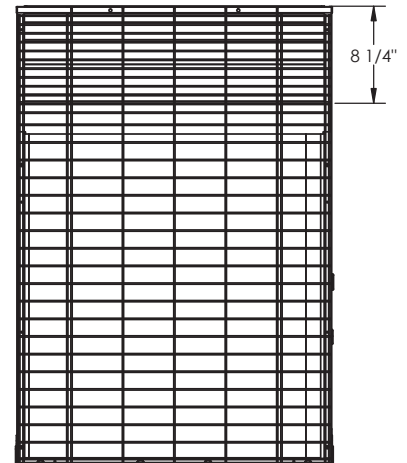
		Series 5000		
MODEL NO		NHPA-418-5019	NHPA-424-5019	NHPA-430-5019
DIMENSIONS				
Width		26 7/8"	26 7/8"	26 7/8"
Height		38 7/8"	38 7/8"	38 7/8"
Length		18 1/2"	18 1/2"	18 1/2"
Liquid Valve		3/8"	3/8"	3/8"
Vapor Valve		3/4"	3/4"	3/4"
NOMINAL COOLING CAPACITY		18,000	22,800	26,800
NOMINAL HEATING CAPACITY	@47°F	15,500	21,400	23,600
	@35°F	13,400	18,000	18,400
	@17°F	9,700	13,600	14,300
ELECTRICAL				
Volts		208/230	208/230	208/230
Hertz		60	60	60
Phase		1	1	1
Min. AWG Wire		12	12	10
Min. Cir. Ampacity		13.47	17.33	18.21
Max. Fuse		20	20	30
COMPRESSOR				
RLA (Amps)		9.0	12.1	12.8
LRA (Amps)		56.3	61.6	67.8
FAN MOTOR				
HP		1/5	1/5	1/5
RPM		1650	1650	1650
Amps (Full Load)		1.8	1.8	1.8
COIL				
Face Area		4.49	4.49	4.49
FPI		15	15	15

*Please consult the DOE CCMS data base [here](#) for a list of rated combinations of indoor and outdoor units. Combinations of outdoor and indoor units that are not rated will require factory testing and listing with DOE. Please consult the factory.

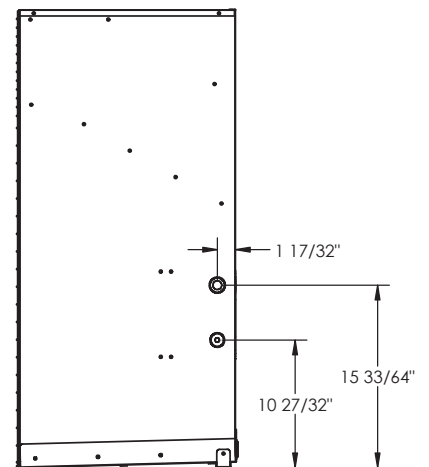
**Dimensions including screw heads on both sides of the cabinet.

All specifications are subject to change without notice.

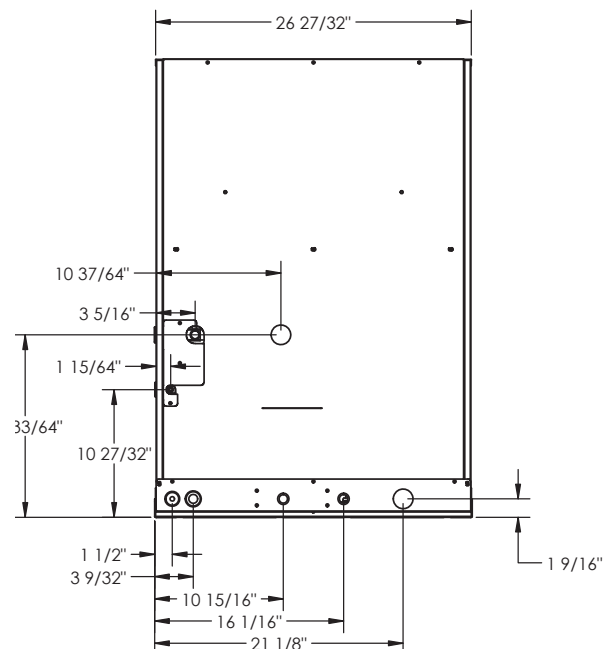
Back View



Side View



Front View



HEATING & A/C EQUIPMENT

National Comfort Products

A Division of National Refrigeration and Air Conditioning Products, Inc.

539 Dunksferry Road • Bensalem, PA 19020-5908

(800) 523-7138 • Fax (215) 639-1674

www.NationalComfortProducts.com



Spec NHPA 5000 12/2017