

February 2025

No. OCB879
REVISED EDITION-A

PARTS CATALOG

R454B
Outdoor unit
[Model Name]

SUZ-AA09NL

[Service Ref.]
SUZ-AA09NL-U1

SUZ-AA12NL

SUZ-AA12NL-U1

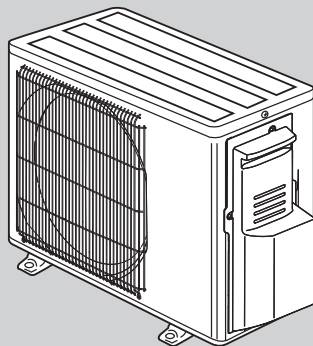
SUZ-AA15NL

SUZ-AA15NL-U1

Revision:

- Some descriptions have been revised in REVISED EDITION-A

OCH879 is void.


SUZ-AA09NL-U1
SUZ-AA12NL-U1
SUZ-AA15NL-U1

CONTENTS

1. SERVICE PARTS LIST..... 2
2. OPTIONAL PARTS..... 4

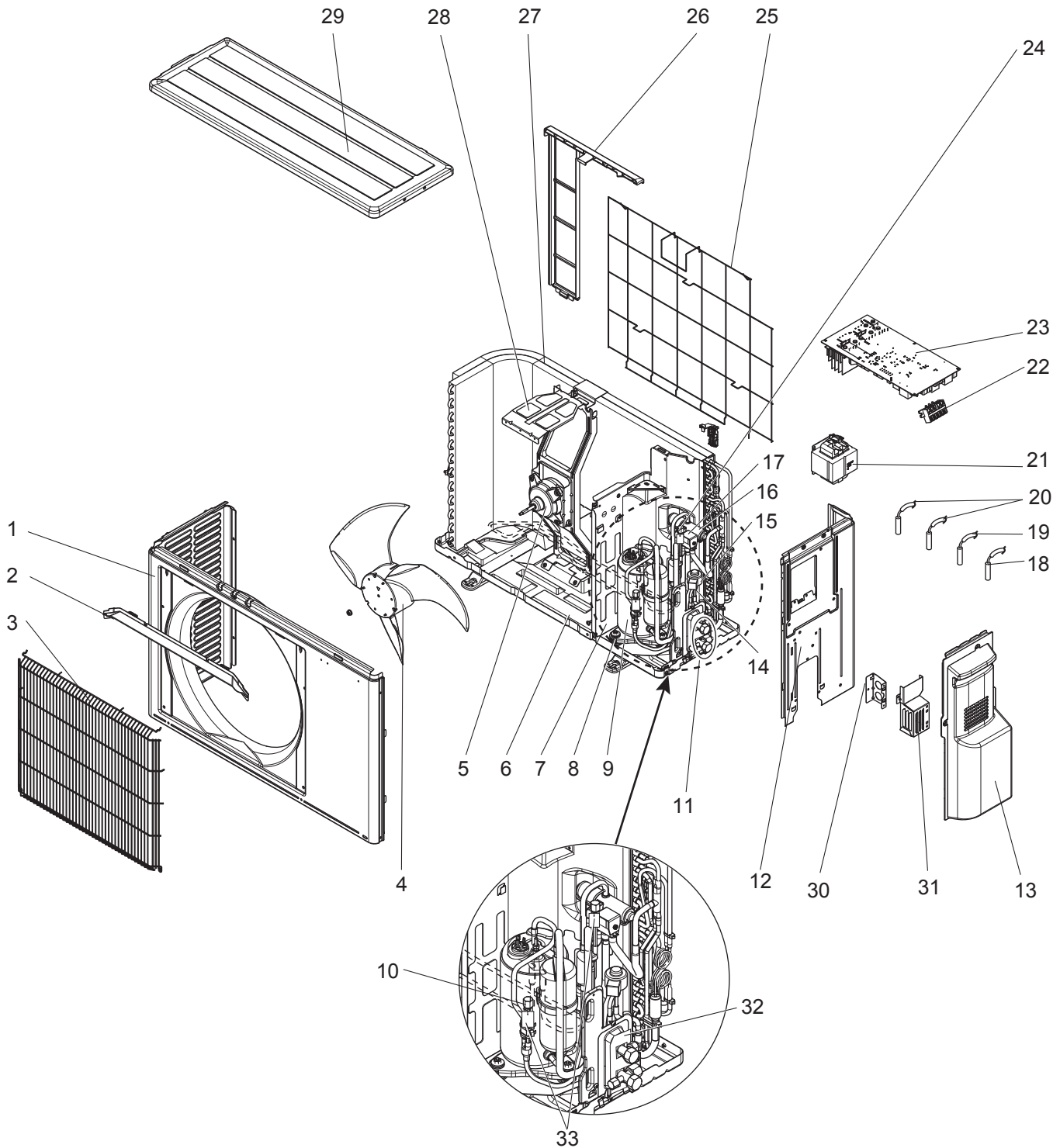
SERVICE MANUAL (OCH879)

1-1. OUTDOOR UNIT STRUCTURAL PARTS, ELECTRICAL PARTS AND FUNCTIONAL PARTS

SUZ-AA09NL-U1

SUZ-AA12NL-U1

SUZ-AA15NL-U1

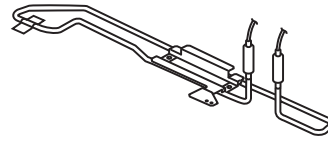


1. The part quantity below indicates the required number of pieces per unit.
2. The circled No. indicates that the part is not shown in the figure.

No.	Part No.	Part Name	SUZ-AA09NL-J1	SUZ-AA12NL-J1	SUZ-AA15NL-J1	Wiring Diagram Symbol	Remarks
1	U01 A04 232	CABINET	1	1	1		
2	U01 A01 531	ICE GUARD	1	1	1		
3	U01 A02 521	GRILLE (OUT)	1	1	1		
4	U01 A01 501	PROPELLER FAN	1	1	1		
4	U01 A01 508	PROPELLER FAN NUT	1	1	1		
5	U01 A01 301	OUTDOOR FAN MOTOR	1	1	1	MF	
6	U01 A02 290	BASE	1	1	1		
7	U01 A02 293	SEPARATOR	1	1	1		
8	U01 A01 506	COMPRESSOR RUBBER MOUNT	3	3	3		
9	U01 A01 900	COMPRESSOR	1	1		MC	SRB092FQFMC(T)
9	U01 A04 900	COMPRESSOR			1	MC	SRB140FQHMC(T)
10	U01 A02 641	SERVICE PORT	1	1	1		Discharge line
11	U01 A02 410	STOP VALVE ASSY	1	1			Includes STOP VALVES(LIQ, GAS)
11	U01 A03 410	STOP VALVE ASSY			1		Includes STOP VALVES(LIQ, GAS)
12	U01 A01 233	BACK PANEL (OUT)	1	1	1		
13	U01 A01 245	SERVICE PANEL	1	1	1		
14	U01 A01 401	EXPANSION VALVE ASSY	1	1			
14	U01 A02 401	EXPANSION VALVE ASSY			1		
15	U01 A01 493	EXPANSION VALVE COIL	1	1	1	LEV	
16	U01 A02 961	4-WAY VALVE	1	1			
16	U01 A01 961	4-WAY VALVE			1		
17	U01 A01 490	SOLENOID COIL	1	1	1	21S4	
18	U01 A04 308	THERMISTOR	1	1	1	RT65	
19	U01 A02 307	THERMISTOR	1	1	1	RT68	
20	U01 A01 306	THERMISTOR	1	1	1	RT61, RT62	
21	U01 A01 337	REACTOR	1	1	1	L61	
22	U01 A01 374	TERMINAL BLOCK	1	1	1	TB	5 P
23	U01 A29 451	INVERTER P.C. BOARD	1				Includes heat sink and RT64
23	U01 A30 451	INVERTER P.C. BOARD		1			Includes heat sink and RT64
23	U01 A31 451	INVERTER P.C. BOARD			1		Includes heat sink and RT64
24	U01 A01 641	SERVICE PORT	1	1	1		Suction line
25	U01 A01 525	CONDENSER WIRE NET	1	1	1		
26	U01 A01 523	CONDENSER NET	1	1	1		
27	U01 A05 630	OUTDOOR HEAT EXCHANGER	1	1	1		
28	U01 A01 515	MOTOR SUPPORT	1	1	1		
29	U01 A01 297	TOP PANEL	1	1	1		
30	U01 A02 978	CONDUIT PLATE	1	1	1		
31	U01 A02 979	CONDUIT COVER	1	1	1		
32	U01 010 987	RED LABEL	1	1	1		FOR STOP VALVE
33	U01 011 987	RED LABEL	2	2	2		FOR SERVICE PORT
34	U01 A03 515	PB SUPPORT	1	1	1		
35	U01 A01 811	PB COVER	1	1	1		
36	U01 A01 602	COMP FELT (TOP)	1	1	1		
37	U01 A02 602	COMP FELT (BODY)	1	1	1		
38	U01 A03 602	COMP FELT (OUTER)	1	1	1		
39	U01 A01 397	LEAD ASSY COMP	1	1			
40	U01 A02 397	LEAD ASSY COMP			1		
41	U01 M01 987	BRAND LABEL	1	1	1		

2-1. DEFROST HEATER

Model	Parts No.
SUZ-AA09NL SUZ-AA12NL SUZ-AA15NL	MAC-650BH-U



Components

①	Defrost heater	1	④	Cable tie	1
②	Aluminum tape	1	⑤	Self drilling screw	2
③	Heater support	1	⑥	Insulation	1

MITSUBISHI ELECTRIC CORPORATION

HEAD OFFICE: TOKYO BUILDING, 2-7-3, MARUNOUCHI, CHIYODA-KU, TOKYO100-8310, JAPAN