

OUTDOOR UNIT

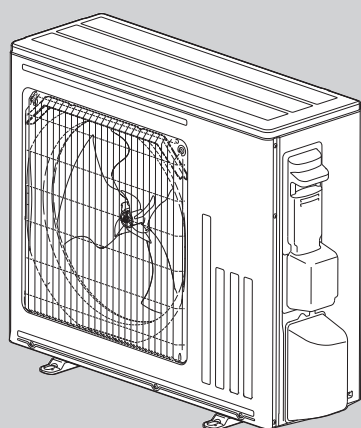
PARTS CATALOG



No. OBB946

Models

MUZ-FX06NLHZ - U1
MUZ-FX09NLHZ - U1
MUZ-FX12NLHZ - U1
MUZ-FX15NLHZ - U1
MUZ-FX18NLHZ - U1
MUZ-FX24NLHZ - U1



MUZ-FX06NLHZ
MUZ-FX09NLHZ
MUZ-FX12NLHZ

CONTENTS

1. SERVICE PARTS LIST2

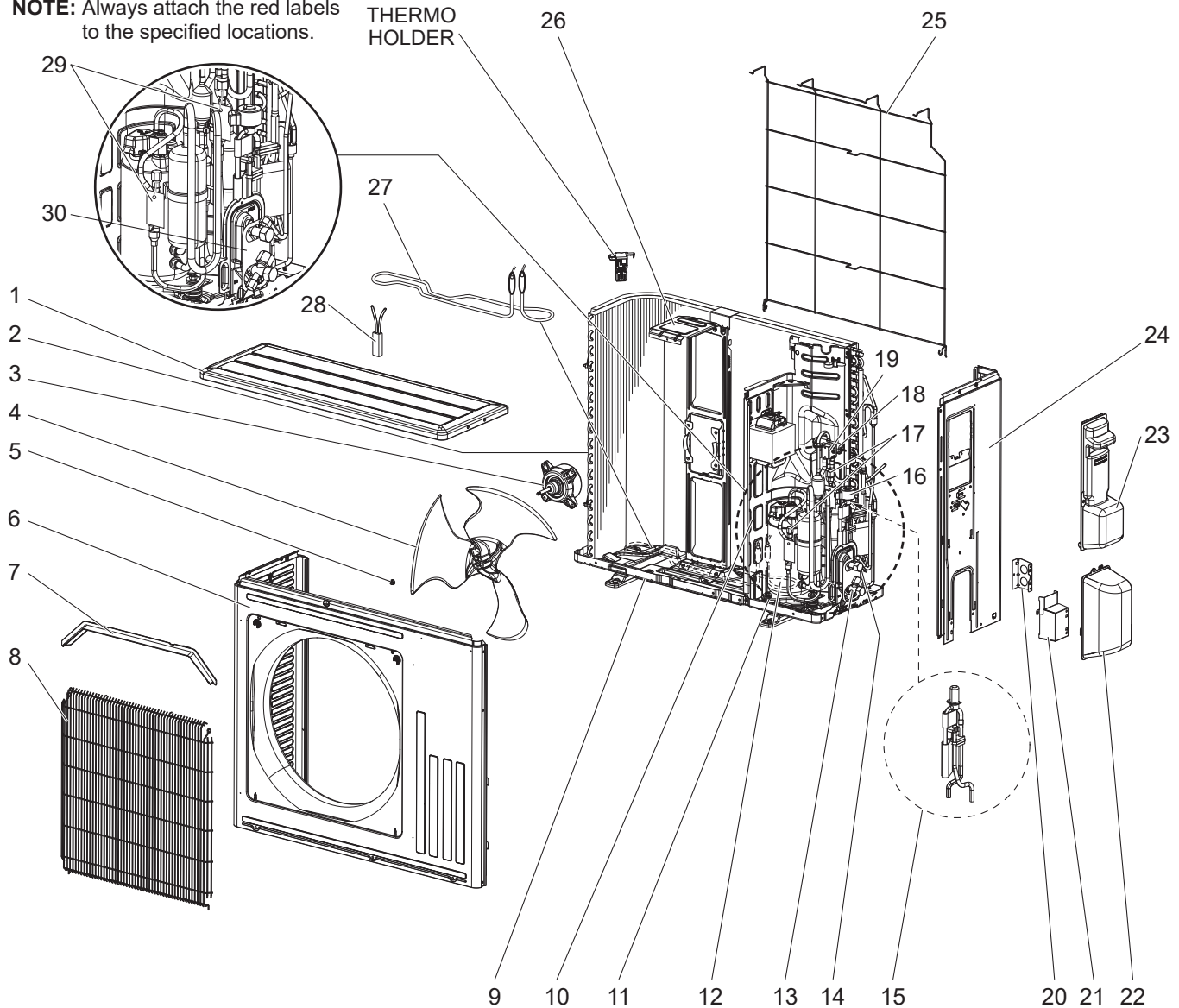
SERVICE MANUAL (OBH946)

MUZ-FX06NLHZ MUZ-FX09NLHZ MUZ-FX12NLHZ

1-1. OUTDOOR UNIT STRUCTURAL PARTS AND FUNCTIONAL PARTS

NOTE: Always attach the red labels to the specified locations.

THERMO
HOLDER



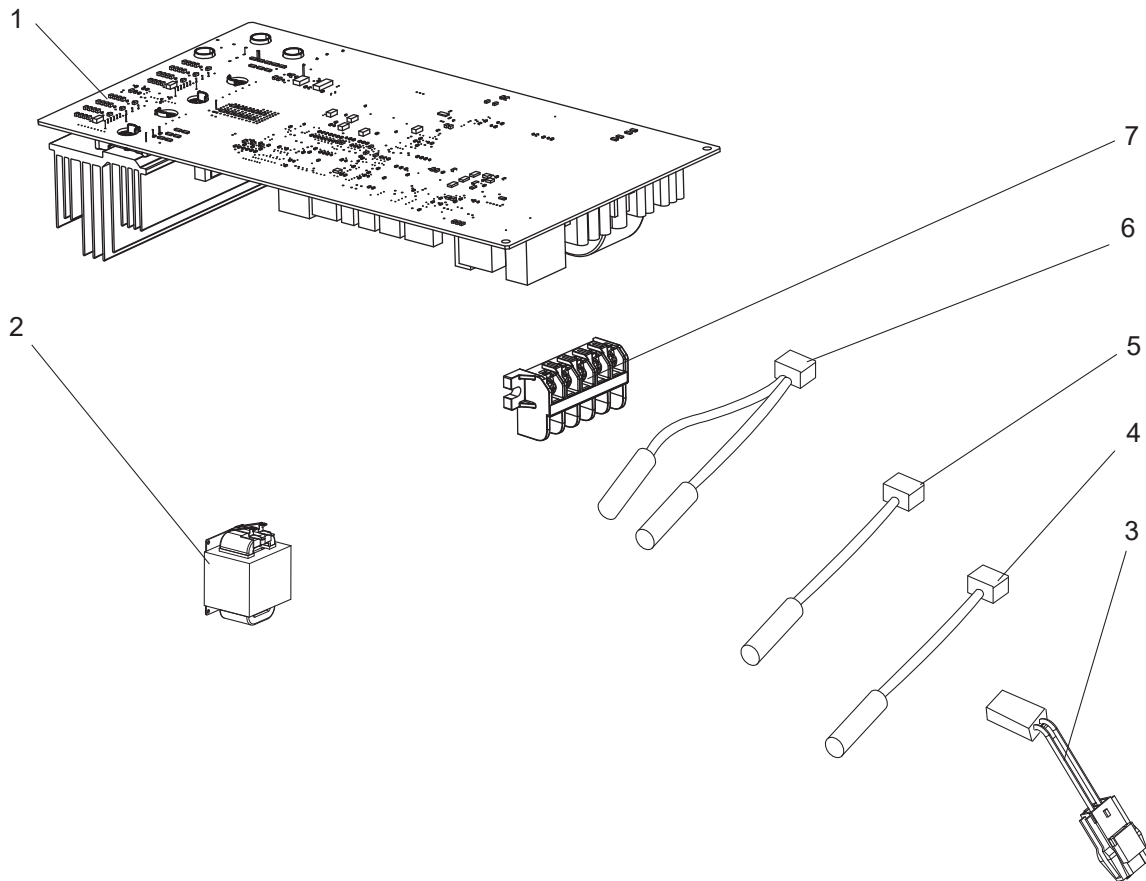
1-1. OUTDOOR UNIT STRUCTURAL PARTS AND FUNCTIONAL PARTS

1. The part quantity below indicates the required number of pieces per unit.

2. The circled No. indicates that the part is not shown in the figure.




No.	Part No.	Part Name	MUZ-FX06NLHZ - [U]	MUZ-FX09NLHZ - [U]	MUZ-FX12NLHZ - [U]	Symbol in Wiring Diagram	Remarks [Drawing No.]
1	E22 Y86 297	TOP PANEL	1	1	1		
2	E22 7C9 630	OUTDOOR HEAT EXCHANGER	1	1	1		
3	E22 7C9 301	OUTDOOR FAN MOTOR	1	1	1	MF	
4	E22 Y86 501	PROPELLER FAN	1	1	1		
5	E27 L05 508	PROPELLER FAN NUT	1	1	1		
6	E22 9H2 232	CABINET	1				
6	E22 9H3 232	CABINET		1	1		
7	E22 Y86 531	ICE GUARD	1	1	1		
8	E22 Y86 521	GRILLE (OUT)	1	1	1		
9	E22 Y96 290	BASE	1	1	1		
10	E22 75R 293	SEPARATOR	1	1	1		
11	E22 C34 506	COMPRESSOR RUBBER SET	3	3	3		3 RUBBERS/SET
12	E22 9H2 900	COMPRESSOR	1			MC	SRB092FQFMT
12	E22 9H3 900	COMPRESSOR		1	1	MC	SRB140FQHMT
13	E22 7C9 661	STOP VALVE (GAS)	1	1	1		3/8 (ø9.52)
14	E22 7C9 662	STOP VALVE (LIQUID)	1	1	1		1/4 (ø6.35)
15	E22 9H2 645	EXPANSION VALVE ASSEMBLY	1				Includes LEV body and capillary tube O.D. 0.157 × I.D. 0.094 × 9-7/16 (ø4.0 × ø2.4 × 240), muffler
15	E22 9H3 645	EXPANSION VALVE ASSEMBLY		1	1		Includes LEV body and capillary tube O.D. 0.157 × I.D. 0.094 × 9-7/16 (ø4.0 × ø2.4 × 240), muffler
16	E22 83Y 493	EXPANSION VALVE COIL	1	1	1	LEV	
17	E22 L85 641	SERVICE PORT	2	2	2		
18	E22 9H2 961	4-WAY VALVE	1	1	1		
19	E22 75R 490	R.V. COIL	1	1	1	21S4	
20	E22 29F 978	CONDUIT PLATE	1	1	1		
21	E22 7C9 979	CONDUIT COVER	1	1	1		
22	E22 Y86 650	VALVE COVER	1	1	1		
23	E22 7C9 245	SERVICE PANEL	1	1	1		
24	E22 9H2 233	BACK PANEL (OUT)	1	1	1		
25	E22 Y86 525	CONDENSER WIRE NET	1	1	1		
26	E22 Y86 515	MOTOR SUPPORT	1	1	1		
27	E22 42M 526	DEFROST HEATER	1	1	1	H	
28	E22 03B 381	HEATER PROTECTOR	1	1	1	26H	
29	—	RED LABEL	2	2	2		[JU79C067H01] For SERVICE PORT
30	—	RED LABEL	1	1	1		[JU79C062H02] For STOP VALVE
①	E22 9H2 640	EXPANSION VALVE	1				
①	E22 8E3 640	EXPANSION VALVE		1	1		
②	E22 19A 936	CAPILLARY TUBE	1	1	1		O.D. 0.157 × I.D. 0.094 × 9-7/16 (ø4.0 × ø2.4 × 240)

MUZ-FX06NLHZ MUZ-FX09NLHZ MUZ-FX12NLHZ
1-2. OUTDOOR UNIT ELECTRICAL PARTS

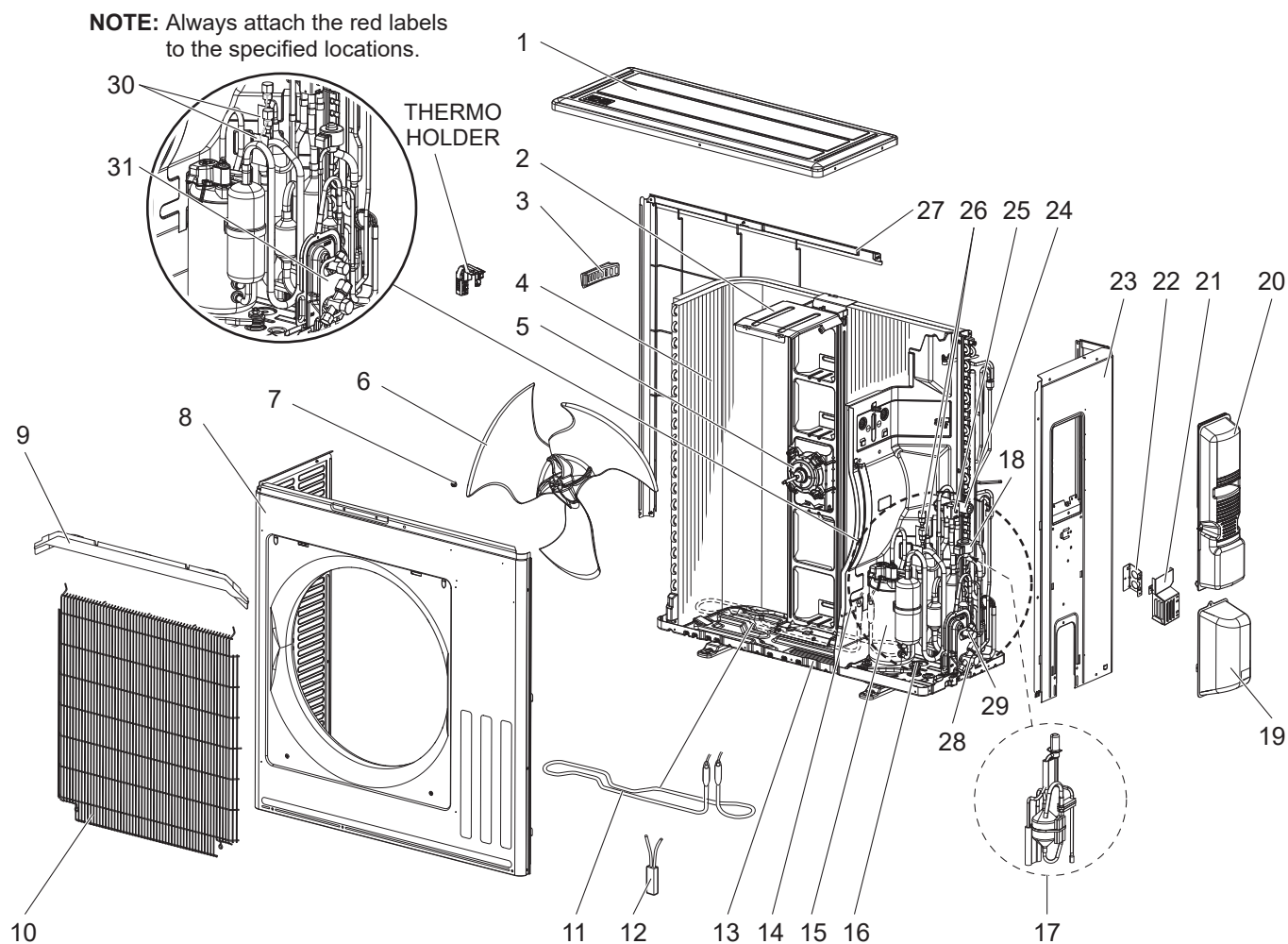


1-2. OUTDOOR UNIT ELECTRICAL PARTS

1. The part quantity below indicates the required number of pieces per unit.

No.	Part No.	Part Name	MUZ-FX06NLHZ - 	MUZ-FX09NLHZ - 	MUZ-FX12NLHZ - 	Symbol in Wiring Diagram	Remarks
1	E22 9H2 451	INVERTER P.C. BOARD	1				Includes heat sink and RT64
1	E22 9H3 451	INVERTER P.C. BOARD		1			Includes heat sink and RT64
1	E22 9H4 451	INVERTER P.C. BOARD			1		Includes heat sink and RT64
2	E22 20A 337	REACTOR	1	1	1	L61	
3	E22 41X 381	COMPRESSOR PROTECTOR	1	1	1	26C	
4	E27 59M 309	AMBIENT TEMPERATURE THERMISTOR	1	1	1	RT65	
5	E22 C34 307	OUTDOOR HEAT EXCHANGER TEMPERATURE THERMISTOR	1	1	1	RT68	
6	E22 Y86 306	THERMISTOR SET	1	1	1	RT61, RT62	DEFROST, DISCHARGE TEMPERATURE combined type
7	E22 9H2 374	TERMINAL BLOCK	1	1	1	TB1	5 P

MUZ-FX15NLHZ MUZ-FX18NLHZ MUZ-FX24NLHZ
1-3. OUTDOOR UNIT STRUCTURAL PARTS AND FUNCTIONAL PARTS



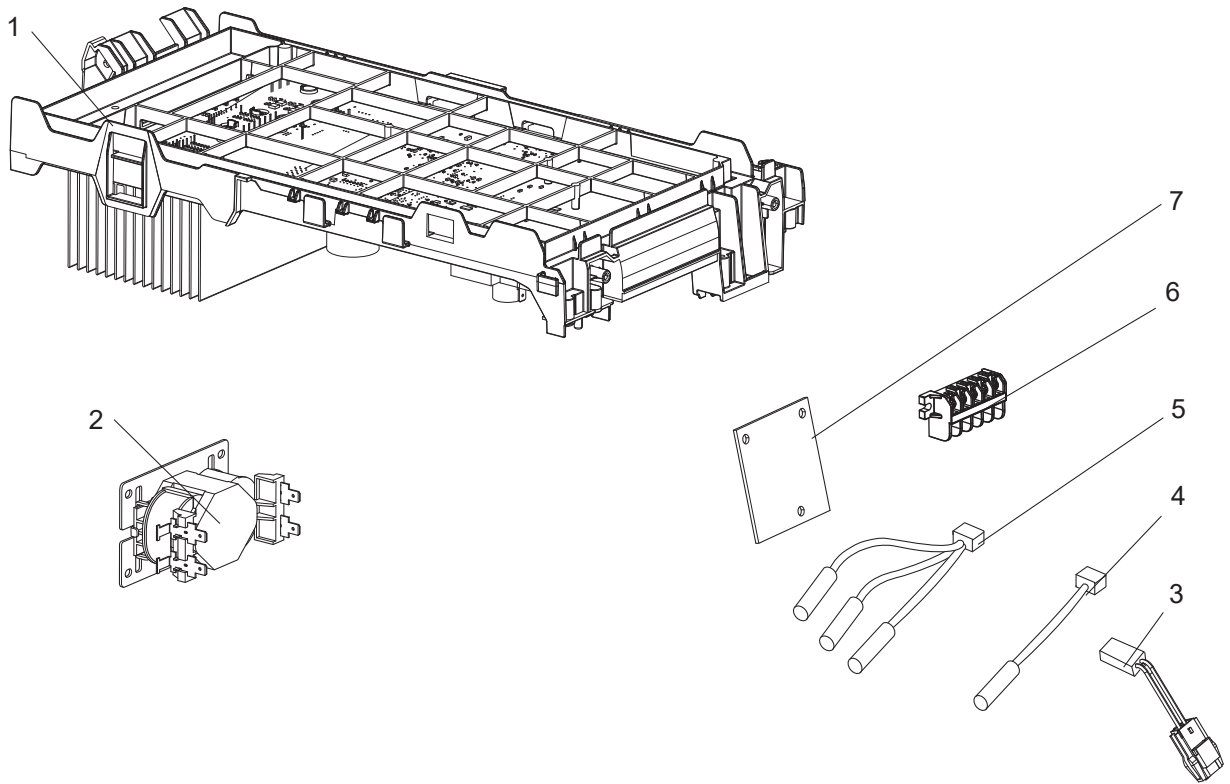
1-3. OUTDOOR UNIT STRUCTURAL PARTS AND FUNCTIONAL PARTS

1. The part quantity below indicates the required number of pieces per unit.

2. The circled No. indicates that the part is not shown in the figure.




No.	Part No.	Part Name	MUZ-FX15NLHZ - U	MUZ-FX18NLHZ - U	MUZ-FX24NLHZ - U	Symbol in Wiring Diagram	Remarks [Drawing No.]
1	E22 L87 297	TOP PANEL	1	1	1		
2	E22 3D5 515	MOTOR SUPPORT	1	1	1		
3	E22 817 009	HANDLE	1	1	1		
4	E27 03L 630	OUTDOOR HEAT EXCHANGER	1	1			
4	E22 3D9 630	OUTDOOR HEAT EXCHANGER			1		
5	E22 3D5 301	OUTDOOR FAN MOTOR	1	1	1	MF	
6	E22 91F 501	PROPELLER FAN	1	1	1		
7	E27 L05 508	PROPELLER FAN NUT	1	1	1		
8	E22 7H3 232	CABINET	1	1			
8	E22 9H7 232	CABINET			1		
9	E22 33N 531	ICE GUARD	1	1	1		
10	E22 91F 521	GRILLE (OUT)	1	1	1		
11	E22 3D6 526	DEFROST HEATER	1	1	1	H	Includes 26H
12	E22 J52 381	HEATER PROTECTOR	1	1	1	26H	
13	E22 57N 290	BASE	1	1	1		
14	E22 9H5 293	SEPARATOR	1	1	1		
15	E22 7H3 900	COMPRESSOR	1	1		MC	SRB172FQHMT
15	E27 2C4 900	COMPRESSOR			1	MC	SRB220FQYMT
16	E22 C34 506	COMPRESSOR RUBBER SET	3	3	3		3 RUBBERS/SET
17	E22 9H5 645	EXPANSION VALVE ASSEMBLY	1	1	1		Includes LEV body, capillary tube O.D. 0.157 × I.D. 0.094 × 3-15/16 (ø4.0 × ø2.4 × 100), muffler
18	E22 9H5 493	EXPANSION VALVE COIL	1	1	1	LEV	
19	E22 Y86 650	VALVE COVER	1	1	1		
20	E22 91F 245	SERVICE PANEL	1	1	1		
21	E22 43F 979	CONDUIT COVER	1	1	1		
22	E22 29F 978	CONDUIT PLATE	1	1	1		
23	E22 33N 233	BACK PANEL (OUT)	1	1	1		
24	E22 75R 961	4-WAY VALVE	1	1	1		
25	E22 9H5 490	R.V. COIL	1	1	1	21S4	
26	E22 L85 641	SERVICE PORT	2	2	2		
27	E22 3D5 523	CONDENSER NET	1	1	1		
28	E22 33N 661	STOP VALVE(GAS)	1	1			ø1/2 (ø12.7)
28	E22 52V 661	STOP VALVE(GAS)			1		ø5/8 (ø15.88)
29	E22 33N 662	STOP VALVE(LIQUID)	1	1			ø1/4 (ø6.35)
29	E22 89R 662	STOP VALVE(LIQUID)			1		ø1/4 (ø6.35)
30	—	RED LABEL	2	2	2		[JU79C067H01] For SERVICE PORT
31	—	RED LABEL	1	1	1		[JU79C062H01] For STOP VALVE
③②	E22 9H5 640	EXPANSION VALVE	1	1	1		
③③	E27 Y91 936	CAPILLARY TUBE	1	1	1		O.D. 0.157 × I.D. 0.094 × 3-15/16 (ø4.0 × ø2.4 × 100)

MUZ-FX15NLHZ MUZ-FX18NLHZ MUZ-FX24NLHZ
1-4. OUTDOOR UNIT ELECTRICAL PARTS



1-4. OUTDOOR UNIT ELECTRICAL PARTS

1. The part quantity below indicates the required number of pieces per unit.

No.	Part No.	Part Name	MUZ-FX15NLHZ - 	MUZ-FX18NLHZ - 	MUZ-FX24NLHZ - 	Symbol in Wiring Diagram	Remarks
1	E22 9H5 451	INVERTER P.C. BOARD	1				Includes heat sink and RT64
1	E22 9H6 451	INVERTER P.C. BOARD		1			Includes heat sink and RT64
1	E22 9H7 451	INVERTER P.C. BOARD			1		Includes heat sink and RT64
2	E22 R84 337	REACTOR	1	1	1	L	
3	E22 42X 381	COMPRESSOR PROTECTOR	1	1	1	26C	
4	E22 38F 309	AMBIENT TEMPERATURE THERMISTOR	1	1	1	RT65	
5	E22 49P 306	THERMISTOR SET	1	1	1	RT61, RT62, RT68	DEFROST, DISCHARGE TEMPERATURE, OUTDOOR HEAT EXCHANGER TEMPERATURE
6	E22 52V 374	TERMINAL BLOCK	1	1	1	TB1	5 P
7	E22 88R 382	FUSE P.C. BOARD	1	1	1	F65, F66	T6.3AL250V

mitsubishi electric corporation

HEAD OFFICE: TOKYO BUILDING, 2-7-3, MARUNOUCHI, CHIYODA-KU, TOKYO 100-8310, JAPAN

© Copyright 2024 MITSUBISHI ELECTRIC CORPORATION
Published: Sep. 2024. No. OBB946
Made in Japan

Specifications are subject to change without notice.