

Climate 5000 Series - Gen 4

18K BTU Single Zone Max Performance System

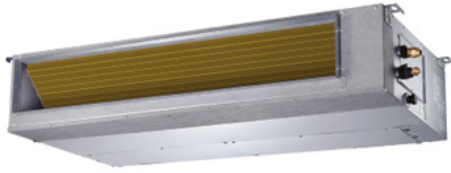
Ducted IDU

Engineering
 Submittal
 Sheet



BOSCH

Overview and Project Information



Project name	
Location	
Architect	
Engineer	
General contractor	
Reference #	

18K Btu Single Zone Max Performance System - Ducted IDU

Indoor part number		8-733-962-711
Indoor model number		BMS500-AAU018-1AHDXD
Outdoor part number		8-733-962-690
Outdoor model number		BMS500-AAS018-1CSXHD
Efficiency Data		AHRI 210/240 2023
SEER2		18.0
EER2		12.0
HSPF2 Region IV		10.5
HSPF2 Region V		9.0
COP(47F)		3.37
COP (5F)		2.00
Performance Data		AHRI 210/240 2023
Cooling	Capacity Range	6500~18800
	Rated Capacity	17000
	Current	9.1
	Input Power	1420
Heating	Capacity Range	8900~22000
	Rated Capacity (47F)	19000
	Rated Capacity (5F)	18000
	Current	10.5
	Input Power	1650
Electrical Data		
Power supply (V / Ø / Hz)		208-230 / 1 / 60
Min. circuit ampacity indoor/outdoor (A)		3.0 / 19.0
Max. fuse indoor/outdoor (A)		15.0 / 20.0
Compressor Data		
Type:		Rotary
Refrigerant oil /oil charge (ml)		VG74 / 620
Input (W)		805 / 2045
Rated current (RLA/A)		4.15 / 9.30
Piping		
Refrigerant precharge (oz/kg)		55.38 / 1.57
Length for precharge (ft/m)		24.6 / 7.5
Liquid side (in/mm)		1/4" / Ø6.35
Gas side (in/mm)		1/2" / Ø12.7
Additional Charge of Refrigerant (oz/ft)/(g/m)		0.16 / 15
Max. refrigerant pipe length (ft/m)		98.40 / 30
Max. difference in height (ft/m)		65.60 / 20

Operation Range

ODU	Cooling (°F / °C)	-22 ~ 122 / -30 ~ 50
	Heating (°F / °C)	-22 ~ 75 / -30 ~ 24
IDU	Cooling (°F / °C)	60 ~ 90 / 16 ~ 32
	Heating (°F / °C)	32 ~ 86 / 0 ~ 30

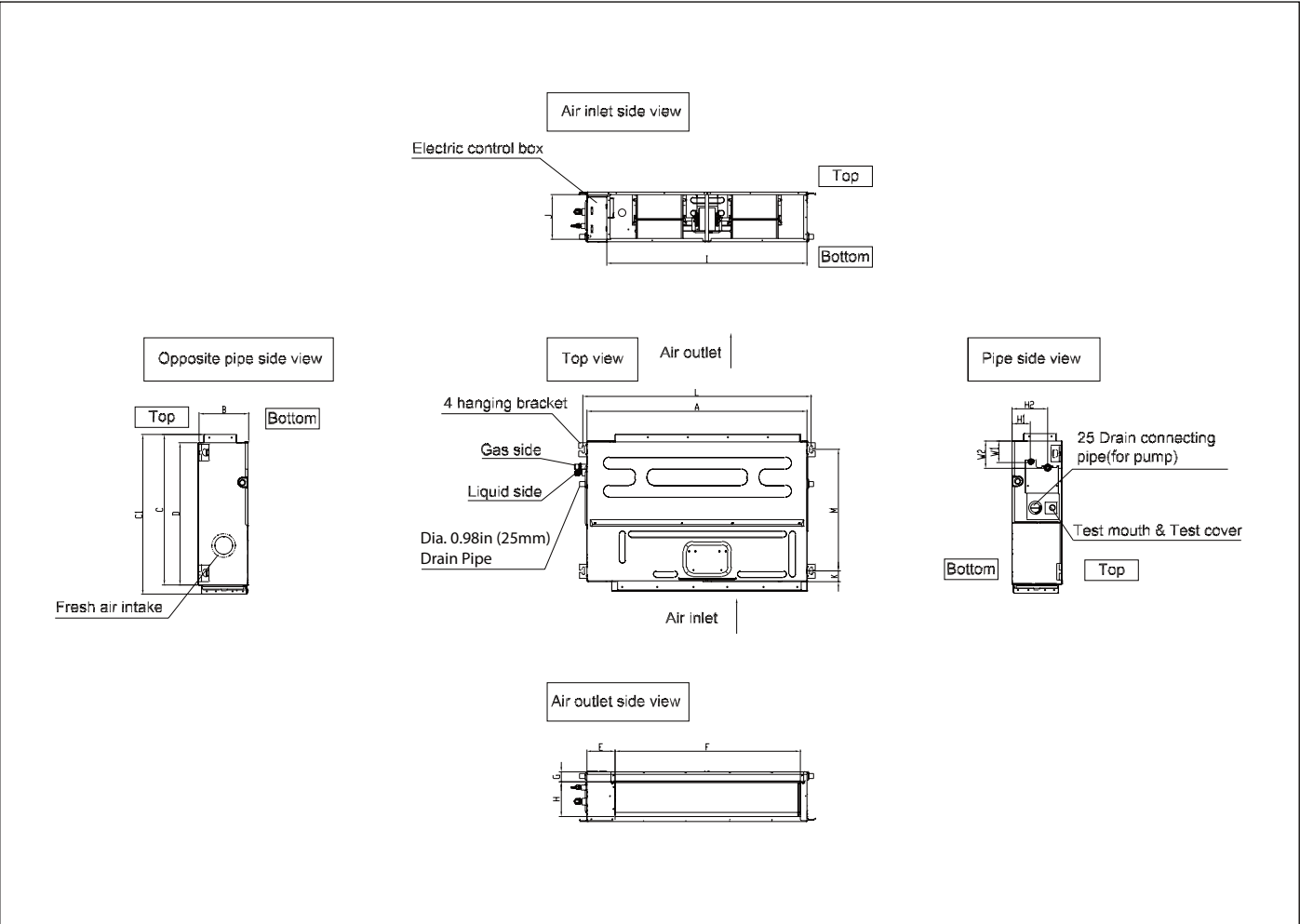
System Data

Refrigerant type		R454B
Design pressure (PSIG)		550 / 340
Dehumidification (pts/hr)		N/A
IDU	Fan motor model	ZKFN-165-10-1L
	Fan motor qty (ea)	1
	Fan motor input (W)	185.0
	Fan speed, H / M / L (RPM)	1100 / 900 / 700
	Air flow, Turbo / H / M / L / Si (CFM)	600.4 / 559.2 / 500.3 / 441.4 / N/A
	Noise level, Turbo / H / M / L / Si (dB(A))	N/A / 40 / 39 / 38 / 32
	Net weight (lbs / kg)	54.45 / 24.7
	Gross weight (lbs / kg)	66.14 / 30
ODU	ESP range (Pa)	0-100
	Drain pipe outside diameter in. (mm)	OD 0.98 (25)
	Fan motor model	ZKFN-80-8-3
	Fan motor qty (ea)	1
	Fan motor input (W)	115
	Fan motor speed, H / / L (RPM)	780 / 700 / 550
	Air flow, Max (CFM)	1765.8
	Noise level, Max (dB(A))	59.0
Accessories	BMS-WT2-XXD (8733962707)	Wired Wall Thermostat
	BMS-DRY-XXD (8733969263)	24V Interface
Accessories	BMS-PK2-7X1 (8733951011)	25ft Lineset

Climate 5000 Series - Gen 4
18K Btu Single Zone Max Performance System - Ducted IDU



Indoor Unit Dimensions and Connections

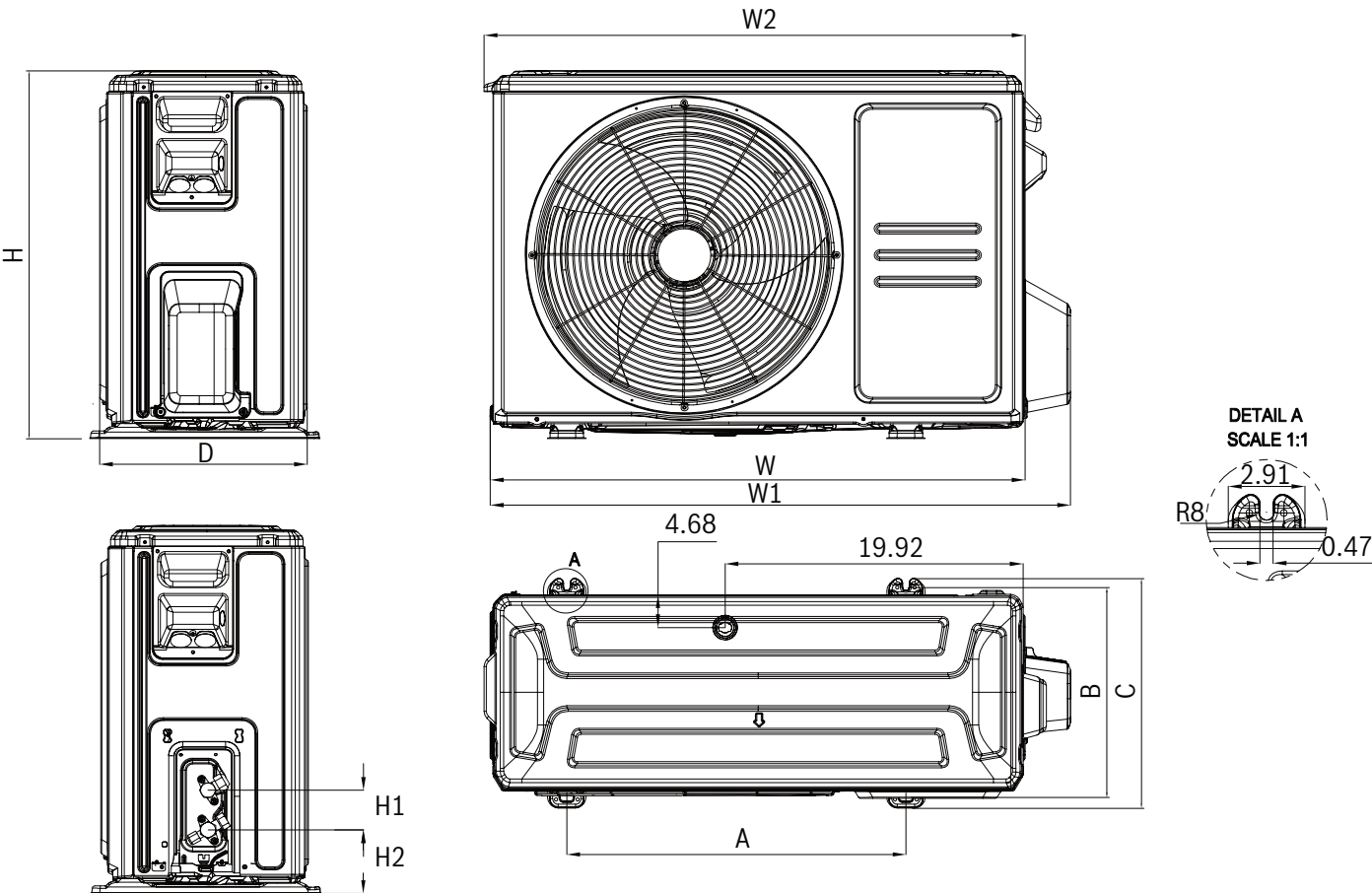


Model	Outline dimension (in)				Air outlet dimension (in)				Return air (in)			Mounting (in)		Gas and liquid valve (in)			
	A	B	C	D	E	F	G	H	I	J	K	L	M	H1	H2	W1	W2
BMS500-AAU018-1AHDXD	34.7	8.3	26.5	23.6	5.5	27.8	2.0	5.4	30.8	7.5	1.6	36.2	20.0	3.1	5.8	3.5	4.4

Climate 5000 Series - Gen 4
18K Btu Single Zone Max Performance System - Ducted IDU

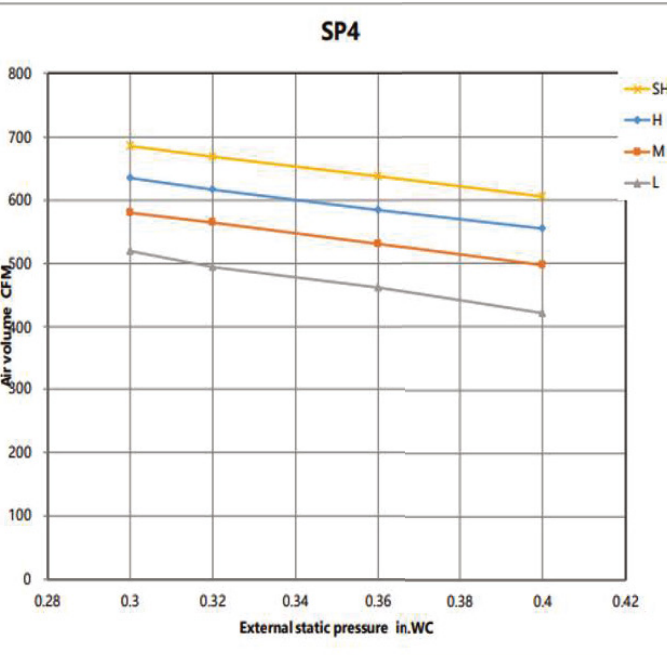
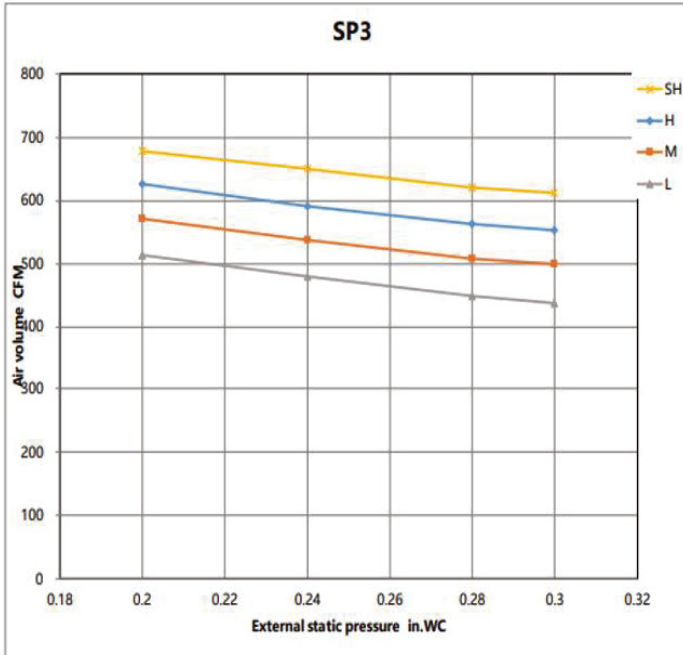
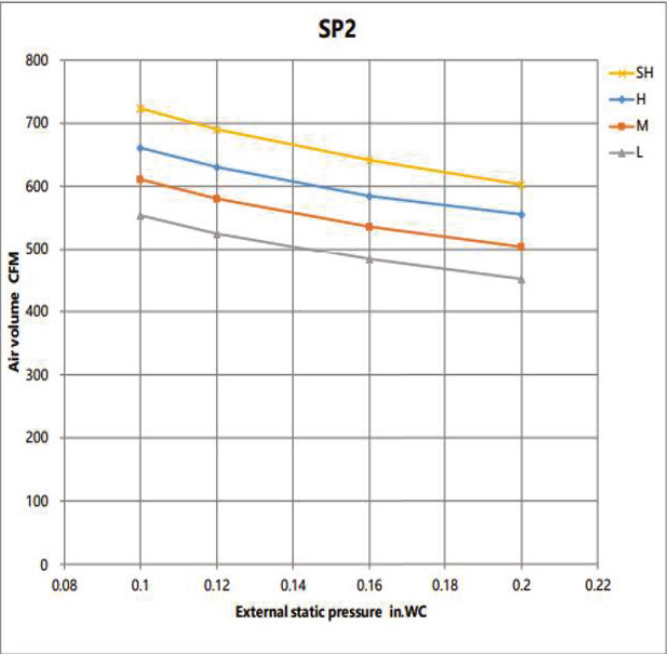
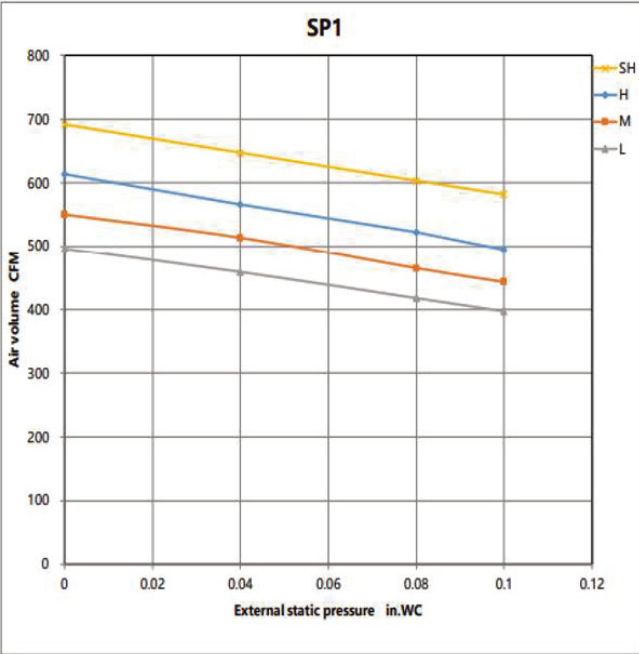


Outdoor Unit Dimensions and Connections



Model	W (in)	D (in)	H (in)	W1 (in)	W2 (in)	H1 (in)	H2 (in)	A (in)	B (in)	C (in)
BMS500-AAS018-1CSXHD	35.04	13.46	26.50	37.6	35.24	2.36	4.25	26.1	13.7	14.96

Air Volume



Air Volume

