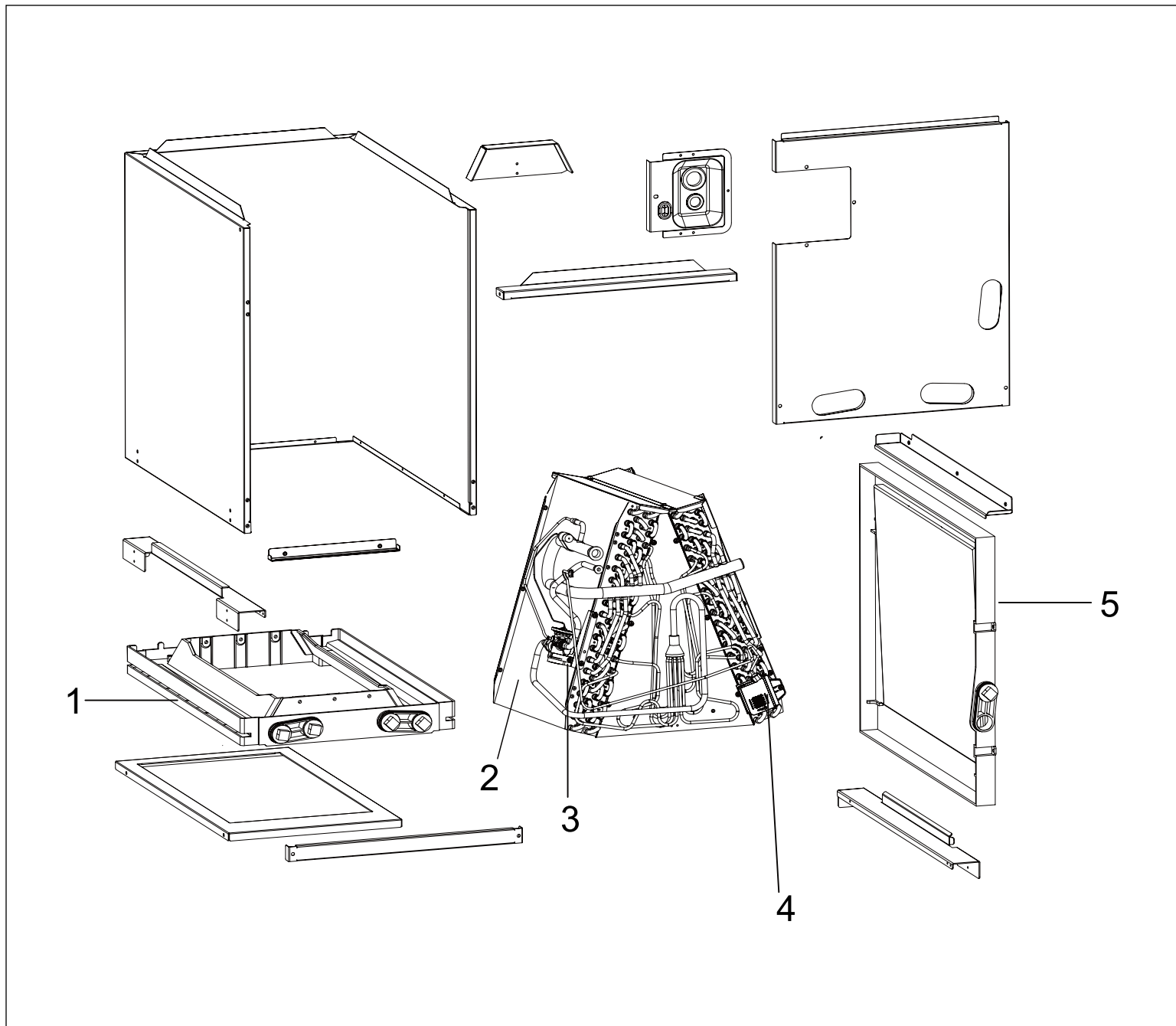


# Bosch Multi-Position Cased Coils BMAC Series

## BMAC2430ABTA and BMAC3036ABTA



The installation/assembly must be carried out by a professional who is authorized to do the work, and with due regard to the relevant regulations.

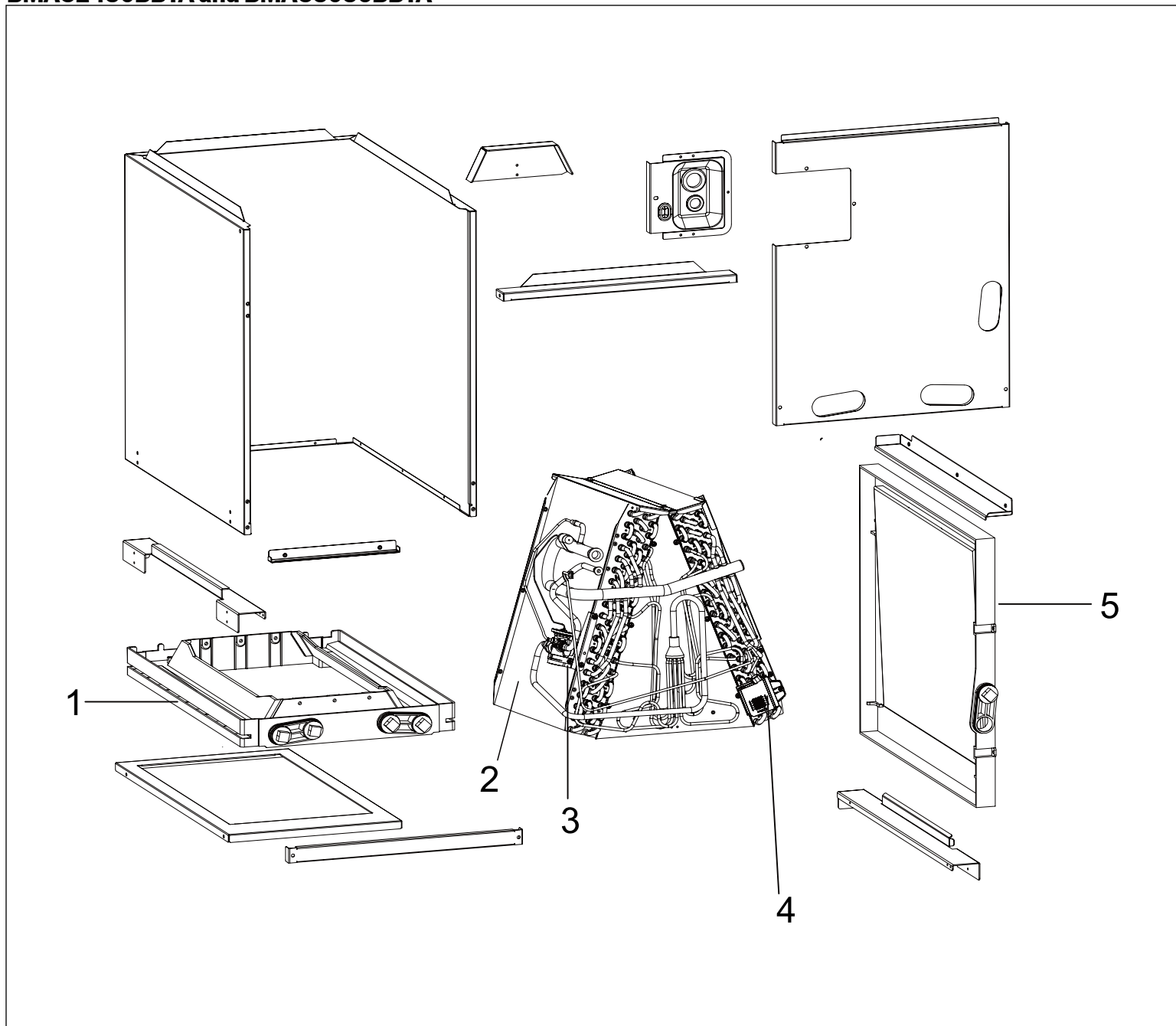


# BOSCH



# Bosch Multi-Position Cased Coils BMAC Series

## BMAC2430BBTA and BMAC3036BBTA



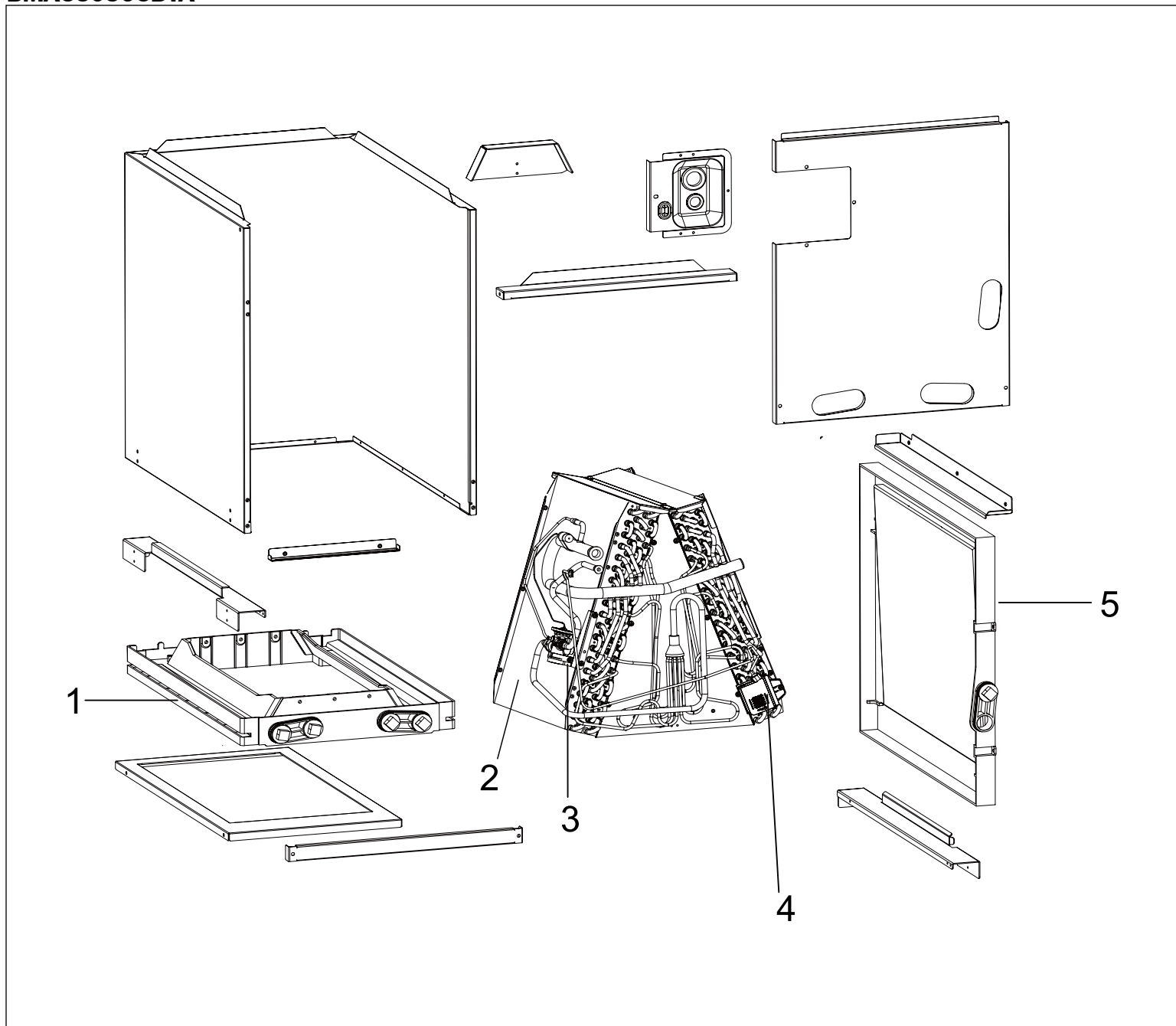
The installation/assembly must be carried out by a professional who is authorized to do the work, and with due regard to the relevant regulations.





# Bosch Multi-Position Cased Coils BMAC Series

## BMAC3036CBTA



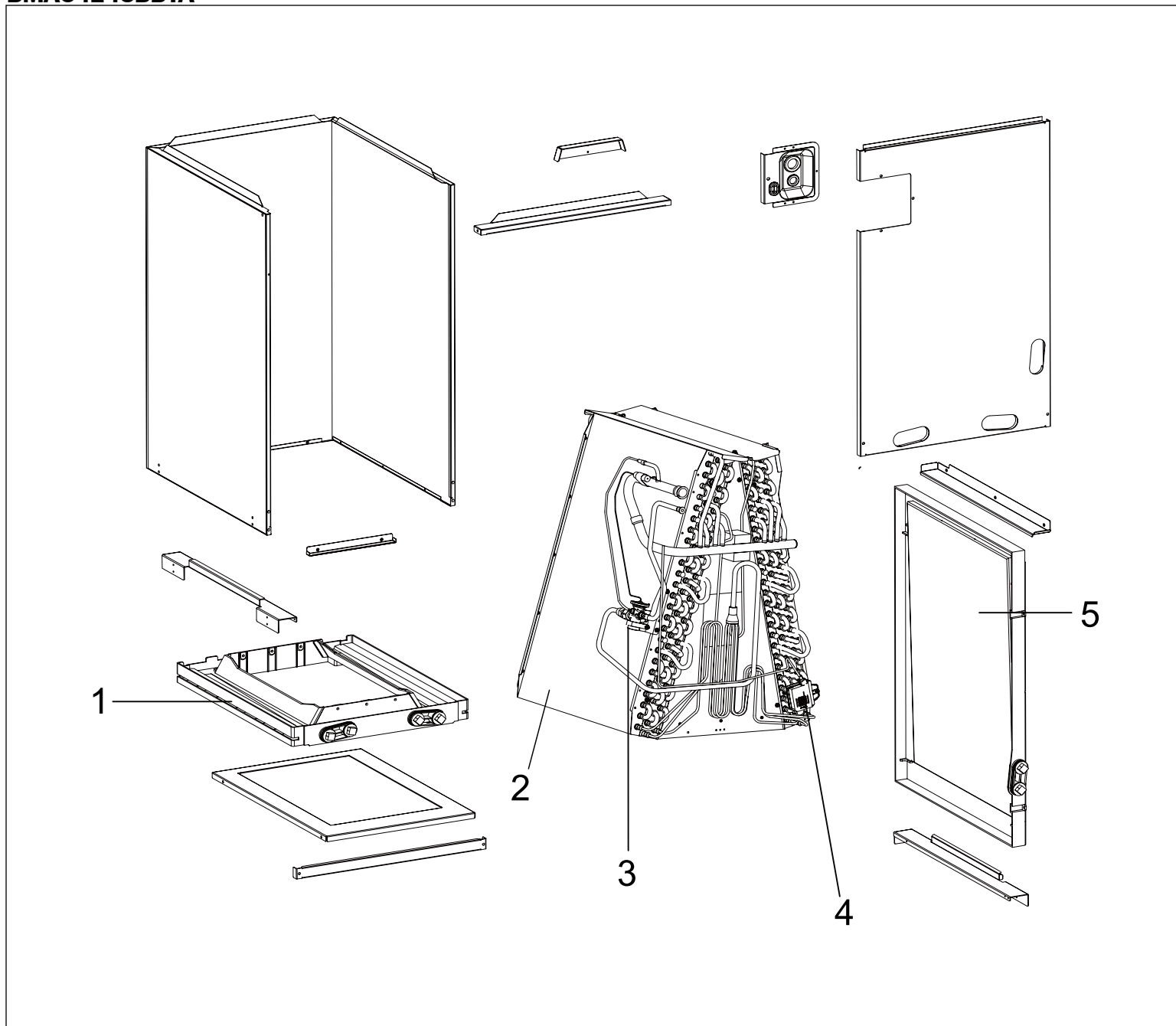
The installation/assembly must be carried out by a professional who is authorized to do the work, and with due regard to the relevant regulations.





# Bosch Multi-Position Cased Coils BMAC Series

## BMAC4248BBTA



The installation/assembly must be carried out by a professional who is authorized to do the work, and with due regard to the relevant regulations.



[illegible]

## Bosch Multi-Position Cased Coils

### BMAC4248BBTA

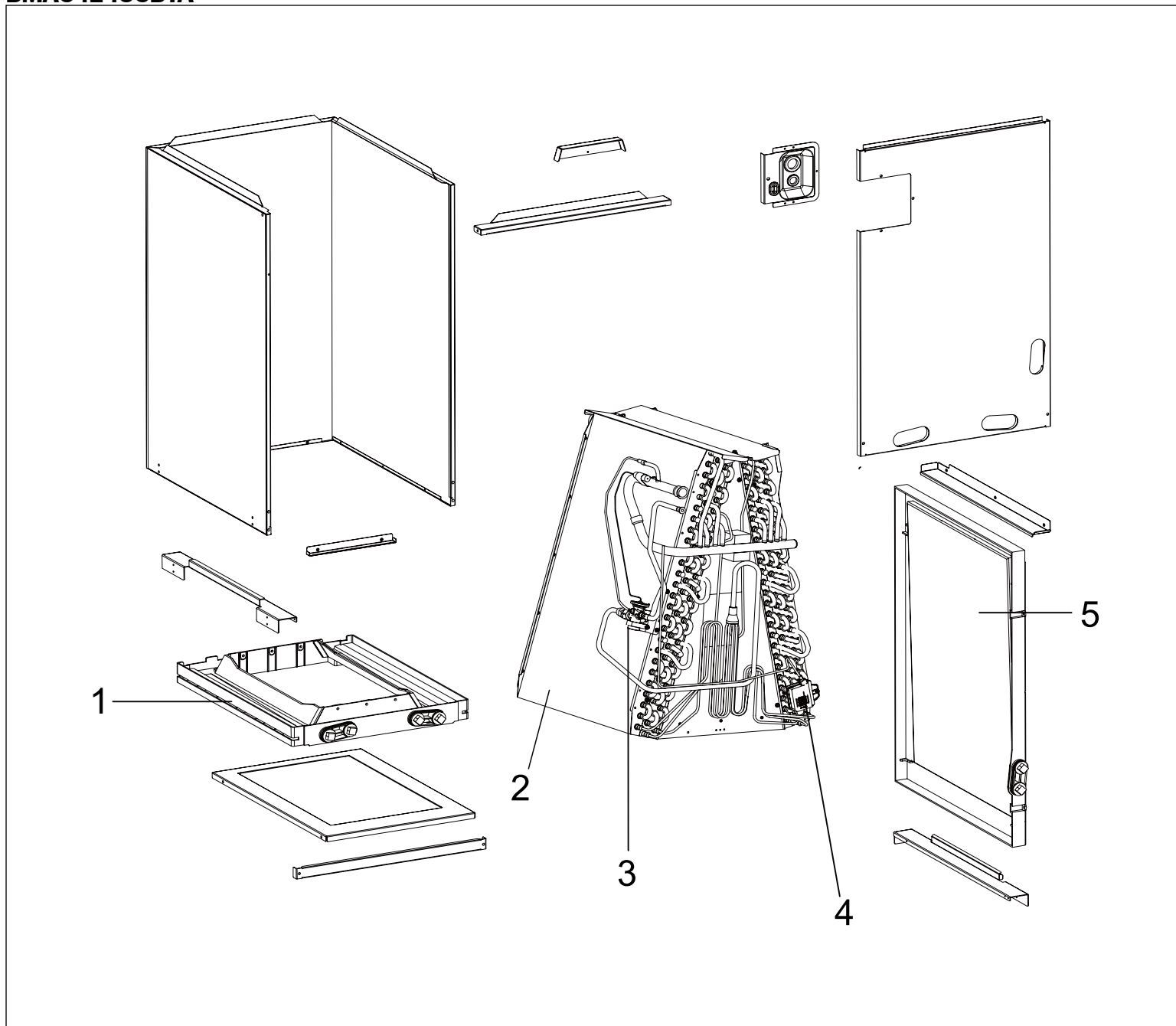


The installation/assembly must be carried out by a professional who is authorized to do the work, and with due regard to the relevant regulations.



# Bosch Multi-Position Cased Coils BMAC Series

## BMAC4248CBTA



The installation/assembly must be carried out by a professional who is authorized to do the work, and with due regard to the relevant regulations.

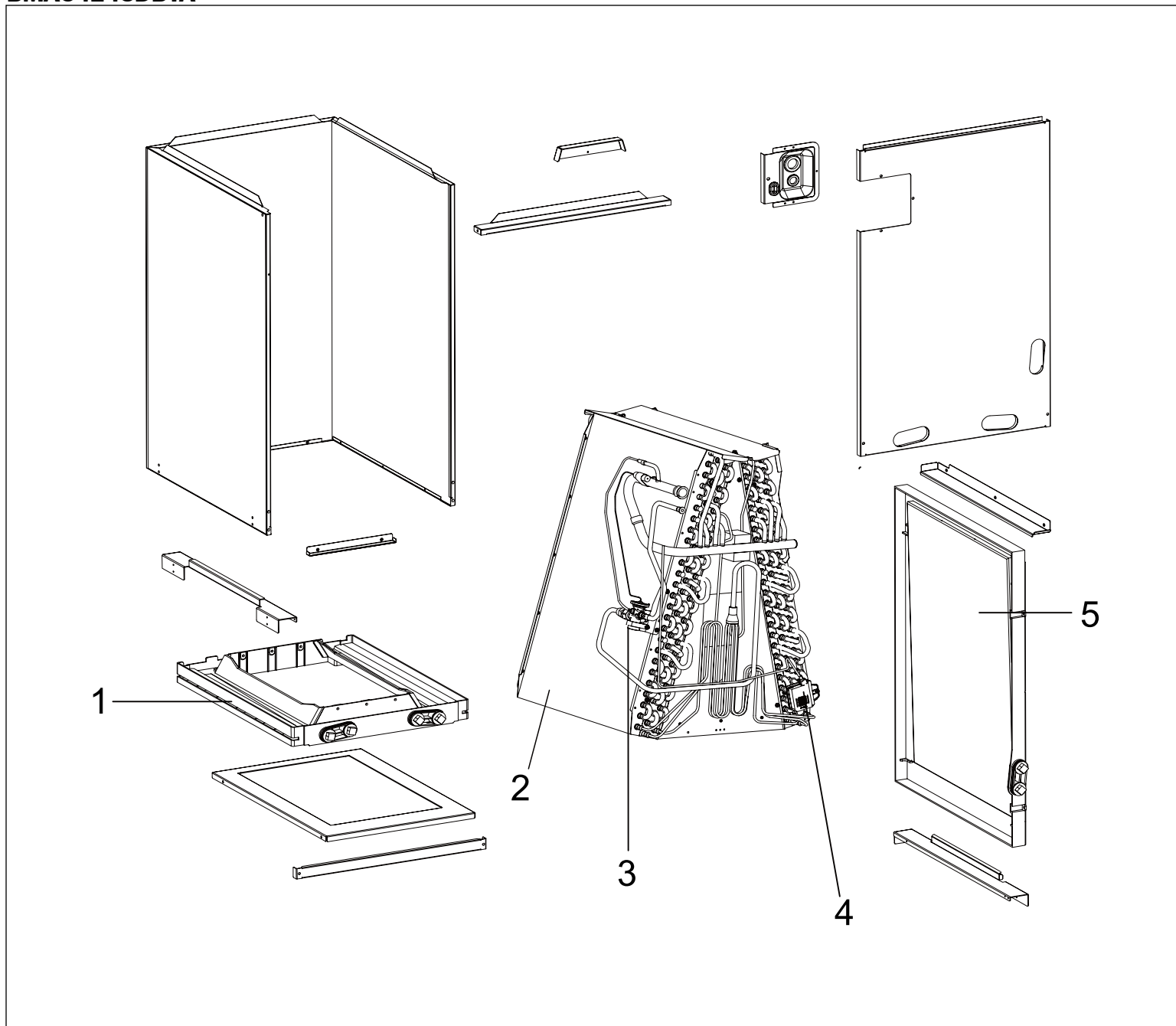


**BOSCH**



# Bosch Multi-Position Cased Coils BMAC Series

## BMAC4248DBTA



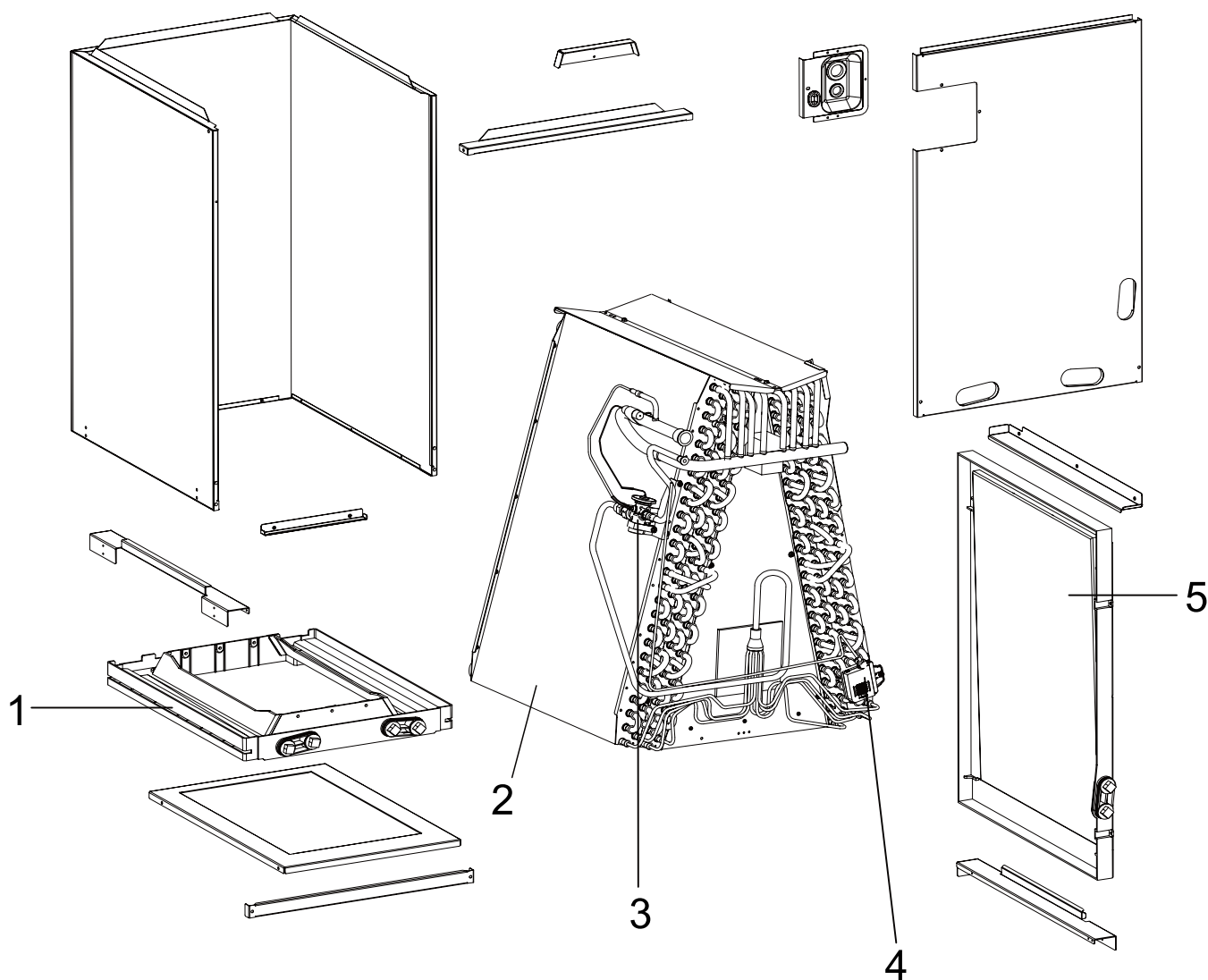
The installation/assembly must be carried out by a professional who is authorized to do the work, and with due regard to the relevant regulations.





# Bosch Multi-Position Cased Coils BMAC Series

## BMAC4860CBTA



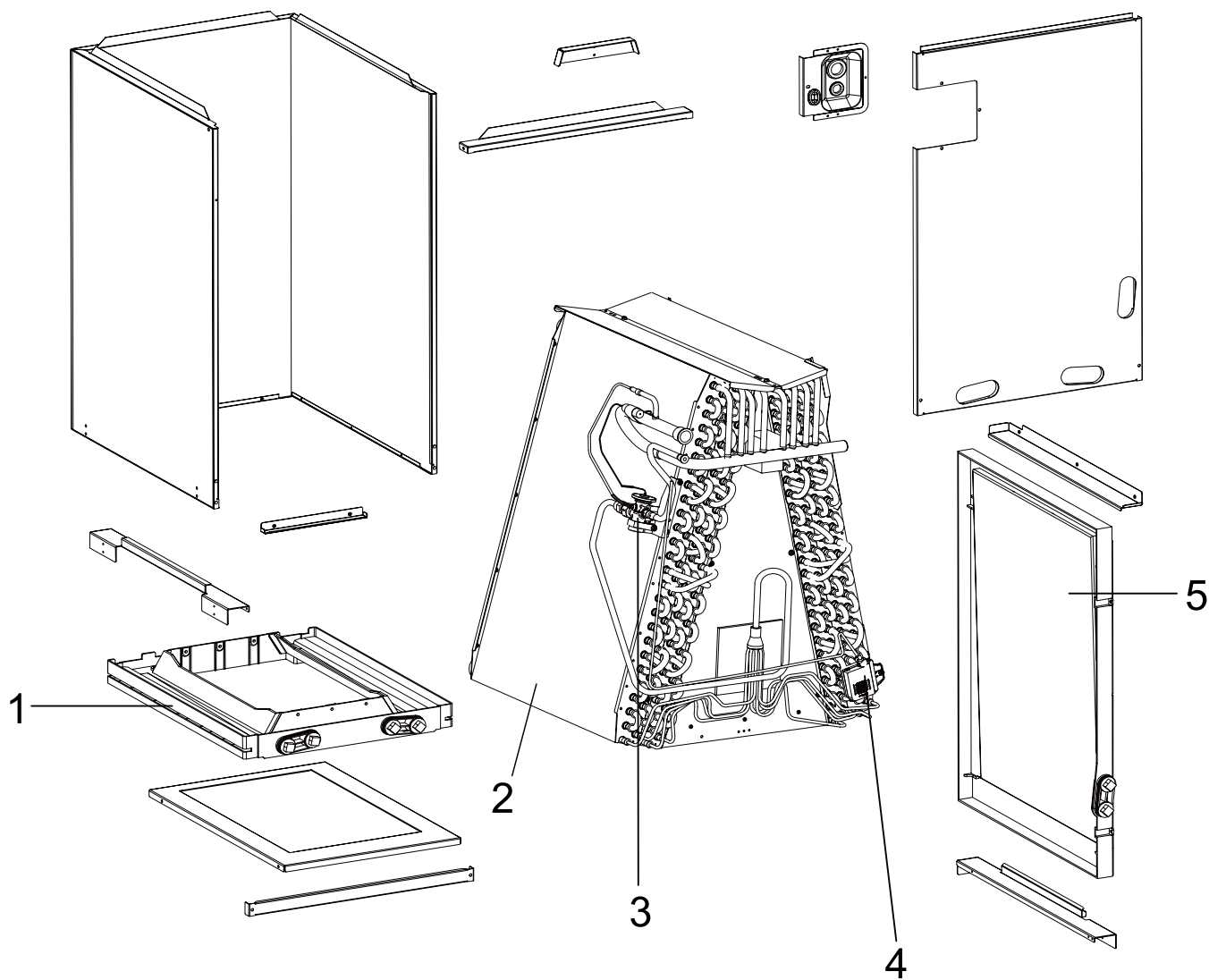
The installation/assembly must be carried out by a professional who is authorized to do the work, and with due regard to the relevant regulations.





# Bosch Multi-Position Cased Coils BMAC Series

## BMAC4860DBTA



The installation/assembly must be carried out by a professional who is authorized to do the work, and with due regard to the relevant regulations.



**BOSCH**

