

AIR CONDITIONER OPTIONAL PARTS

OPERATING MANUAL
IR receiver kit (for cassette)

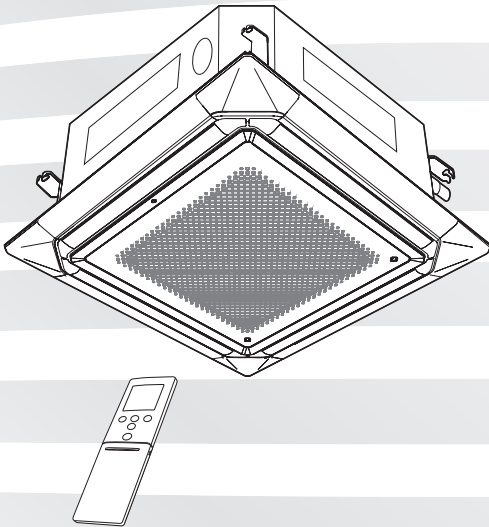
English

MODE D'EMPLOI
Kit Récepteur IR (pour cassette)

Français

MANUAL DE FUNCIONAMIENTO
Juego receptor de infrarrojos (para cassette)

Español



KEEP THIS MANUAL FOR FUTURE REFERENCE
CONSERVEZ CE MANUEL POUR RÉFÉRENCE
ULTÉRIEURE
CONSERVE ESTE MANUAL PARA FUTURA
REFERENCIA



PART No. 9378787131

OPERATING MANUAL

PART No. 9378787131

IR receiver kit (for cassette)

CONTENTS

SAFETY PRECAUTIONS.....	1
NAME OF PARTS.....	2
FEATURES AND FUNCTIONS.....	3
PREPARATION.....	3
OPERATION.....	4
TIMER FUNCTIONS.....	5
ON/OFF TIMER.....	5
PROGRAM TIMER.....	5
SLEEP TIMER.....	5
ADJUSTING THE AIR CIRCULATION.....	6
ECONOMY OPERATION.....	7
MIN. (MINIMUM) HEAT OPERATION.....	7
FAN CONTROL FOR ENERGY SAVING.....	7
OTHER SETTINGS AND OPERATION.....	8
CLEANING AND CARE.....	8
TROUBLESHOOTING.....	9

SAFETY PRECAUTIONS

To prevent personal injury, or property damage, read this section carefully before you use this product, and be sure to comply with the following safety precautions.

Incorrect operation due to failure to follow the instructions may cause harm or damage, the seriousness of which is classified as follows:



WARNING

This mark warns of death or serious injury.



CAUTION

This mark warns of injury or damage to property.



This mark denotes an action that is PROHIBITED.



This mark denotes an action that is COMPULSORY.



WARNING



- This product contains no user-serviceable parts. Always consult authorized service personnel for repairing, installation, and relocation of this product. Improper installation or handling will cause leakage, electric shock, or fire.
- In the event of a malfunction such as burning smell, immediately stop operation of the air conditioner, and disconnect all the power supply by turning off the electrical breaker or disconnecting the power plug. Then consult authorized service personnel.
- Take care not to damage the power supply cable. If the supply cord is damaged, it must be replaced by the manufacturer, its service agent or similarly qualified persons in order to avoid a hazard.
- In the event of refrigerant leakage, be sure to keep away from fire or any flammables, and consult authorized service personnel.
- In the event of a thunder storm or any prior sign of a lightning strike, turn off the air conditioner via the remote controller, and refrain from touching the product or the power source to prevent any electrical hazards.



- This appliance is not intended for use by persons (including children) with reduced physical, sensory or mental capabilities, or lack of experience and knowledge, unless they have been given supervision or instruction concerning use of the appliance by a person responsible for their safety. Children should be supervised to ensure that they do not play with the appliance.
- Dispose of the packing materials safely. Tear and dispose of the plastic packing bags so that children cannot play with them. There is the danger of suffocation if children play with the original plastic bags.



- Do not start or stop the operation of this product by turning on or off the circuit breaker.
- Do not use inflammable gases near this product.
- Do not expose yourself directly to the cooling airflow for many hours.
- Do not insert your fingers or any other objects into outlet port or inlet port.
- Do not operate with wet hands.



CAUTION



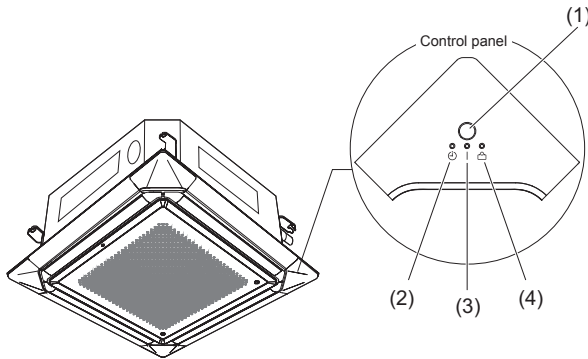
- Provide occasional ventilation during use.
- Always operate this product with air filters installed.
- Ensure that any electronic equipment is at least 1 meter away from this product.
- Turn off power source when not using this product for extended periods.
- After a long period of use, ensure to get the mounting of the indoor unit checked to prevent this product from falling down.
- The airflow direction and the room temperature should be carefully considered when you use this product in a room with infants, children, elderly or sick persons.
- Keep the surroundings of the outdoor unit clean and tidy, and do not place items around it. Any objects blocking or entering from the outlet ports may cause product malfunction.



- Do not direct the airflow at fireplaces or heating apparatus.
- Do not block or cover the inlet port and the outlet port.
- Do not apply any heavy pressure to radiator fins.
- Do not climb on, place objects on, or hang objects from this product.
- Do not place any other electrical products or household belongings under this product. Dripping condensation from this product might get them wet, and may cause damage or malfunction of your property.
- Do not expose this product directly to water.
- Do not use this product for preservation of food, plants, animals, precision equipment, art work, or other objects. This may cause quality deterioration of those items.
- Do not expose animals or plants to the direct airflow.
- Do not drink the drainage from the air conditioner.
- Do not pull the power supply cable.
- Do not touch the aluminum fins of heat exchanger built-in this product to avoid personal injury when you install or maintain the unit.
- Do not stand on unstable steps when operating or cleaning this product. It may overturn and can cause injury.

NAME OF PARTS

Indoor unit



Control panel

(1) Remote control signal receiver and Manual Auto button

- When the Manual Auto button is pressed in for more than 10 seconds, the Forced Cooling operation will start.
- The Forced Cooling operation is used at the time of installation. Only for authorized service personnel's use.
- When the Forced Cooling operation starts by any chance, press the Start/Stop button to stop the operation.
- Please press the button at Filter Reset.

(2) Timer indicator lamp (orange)

Timer indicator lamp turns on when the timer is set from wireless remote controller.

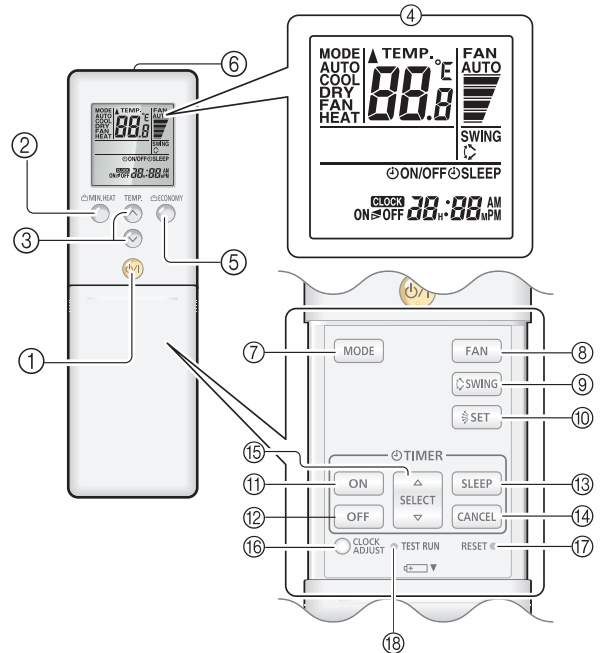
(3) Operation indicator lamp (green)

(4) Economy indicator lamp (green)

Economy indicator lamp turns on in following operations:

- Economy operation
- MIN. HEAT operation (controlled by wireless remote controller)

Parts and buttons



- ① Start/Stop button
- ② "MIN. (MINIMUM) HEAT" button
- ③ "TEMP. (Δ V)" button
- ④ Remote controller display
- ⑤ "ECONOMY" button
- ⑥ Signal transmitter
- ⑦ "MODE" button
- ⑧ "FAN" button
- ⑨ "SWING" button
- ⑩ "SET (Vertical airflow)" button
- ⑪ "ON" timer button
- ⑫ "OFF" timer button
- ⑬ "SLEEP" button
- ⑭ "CANCEL" button
- ⑮ "SELECT (Δ▽)" button
- ⑯ "CLOCK ADJUST" button
- ⑰ "RESET" button*
- ⑱ "TEST RUN" button*

*: Press the "RESET" button or "TEST RUN" button gently by using the tip of a ballpoint pen or other small objects in the correct direction as shown in this figure.



FEATURES AND FUNCTIONS

Instructions relating to heating (*) are applicable only to Heating and Cooling model (Reverse Cycle).

VERTICAL AIRFLOW

Comfortable airflow spread to every corner of the room by the wide vertical airflow.

ECONOMY OPERATION

During Economy operation, the room temperature will be little higher than the set-temp under Cooling mode and lower than set-temp under Heating* mode. Therefore, the Economy operation is able to save more energy than other normal operations.

AUTO (AUTO CHANGEOVER)

The operation mode (Cooling, Heating*) is switched automatically to maintain the set temperature, and the temperature is kept constant at all times.

FAN CONTROL FOR ENERGY SAVING

When the set temperature is reached during Cooling mode, the fan operates intermittently and power is saved.

MIN. HEAT OPERATION*

The room temperature can be maintained at 50°F (10.0°C) so as to prevent the room temperature from falling too far.

FINE TEMPERATURE ADJUSTMENTS

The temperature can be set in 1°F (0.5°C) increments.

PROGRAM TIMER

The program timer allows you to integrate Off timer and On timer functions in a single sequence. The sequence can involve 1 transition from Off timer to On timer, or from On timer to Off timer, within a 24 hour period.

SLEEP TIMER

● COOLING MODEL

When the "SLEEP" button is pressed during Cooling or Dry mode, the thermostat setting is gradually raised during the period of operation. When the set time is reached, the unit automatically turns off.

● HEATING AND COOLING MODEL (REVERSE CYCLE)

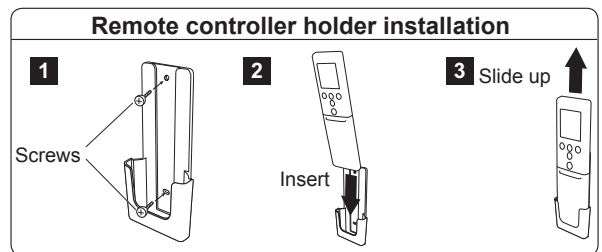
When the "SLEEP" button is pressed during Heating mode, the air conditioner's thermostat setting is gradually lowered during the period of operation; during Cooling or Dry mode, the thermostat setting is gradually raised during the period of operation. When the set time is reached, the unit automatically turns off.

WIRED REMOTE CONTROLLER

You can use both wireless and wired remote controller simultaneously, however, the following functions will be restricted.

- On/Off timer (depending on the remote controller type)
- Sleep timer (depending on the remote controller type)
- MIN. HEAT operation

PREPARATION



WARNING



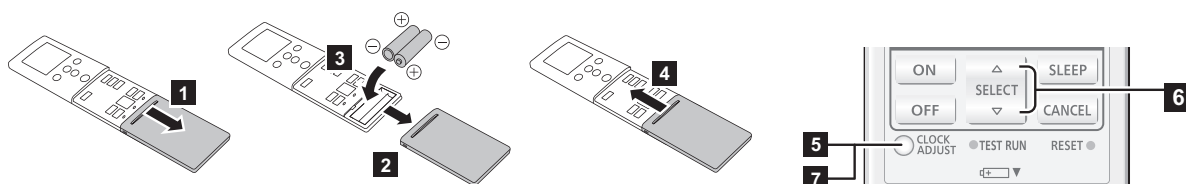
Take care to prevent infants and young children from accidentally swallowing the batteries.

CAUTION



- Do not attempt to recharge dry batteries.
- Do not use dry batteries that has been recharged.
- When not using the remote controller for an extended period, remove the batteries to avoid possible leakage and damage to the unit.
- If leaking battery fluid comes in contact with your skin, eyes, or mouth, immediately wash with copious amounts of water, and consult your physician.
- Exhausted batteries should be removed immediately and disposed of properly, either in a battery collection receptacle or to the appropriate authority.

Battery (R03/LR03/AAA × 2) loading and remote controller preparation



- 5 Press "CLOCK ADJUST" button to start clock setting.
- 6 Set the time by pressing "SELECT ($\Delta \nabla$)" buttons. *By pressing the "TEMP. ($\wedge \vee$)" buttons, the time indicator can be changed from a 12-hour to a 24-hour clock. Pressing Δ or ∇ changes the value by the minute. Pressing down on Δ or ∇ changes the value by 10 minutes.
- 7 To complete, press the "CLOCK ADJUST" button again.

NOTES:

- Use specified type of batteries only.
- Do not mix different types or new and used batteries together.
- Batteries can be used about 1 year in ordinary use.
- If the remote control range noticeably shortens, or the display is pale or difficult to see, replace the batteries, and press the "RESET" button as shown in page 2.

Temperature display

To change the temperature unit

- 1 Press the Start/Stop button until only the clock is displayed.
- 2 Press down on the "TEMP. (\wedge)" button for at least 5 seconds to display the current temperature unit. (Factory setting: °F)
- 3 Press the "TEMP. ($\wedge \vee$)" buttons to switch the temperature unit. (°F \leftrightarrow °C)
- 4 By either of pressing the Start/Stop button or no additional button operation for 30 seconds in step 2, the temperature unit currently selected will be set.



To set the operation mode

• Operation mode setting

Press the "MODE" button to set the operation mode. Switches operation mode in following order.

→ AUTO → COOL → DRY → FAN → HEAT*

• Room temperature setting

Press the "TEMP. ($\wedge \vee$)" buttons to set the room temperature.

The temperature can be set in 1°F (0.5°C) increments.

Temperature setting range

Auto.....	64 - 88°F (18.0 - 30.0°C)
Cool/Dry.....	64 - 88°F (18.0 - 30.0°C)
Heat*.....	60 - 88°F (16.0 - 30.0°C)

• Fan speed setting

Press the "FAN" button to set the fan speed.



OPERATION

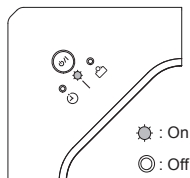
Instructions relating to heating (*) are applicable only to Heating and Cooling model (Reverse Cycle).

To start/stop operation

Press the Start/Stop button.

Operation indicator lamp

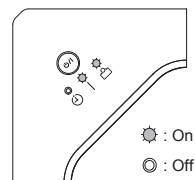
Air conditioner On: Turns on
Air conditioner Off: Turns off



Economy operation

Press the "ECONOMY" button to start or stop Economy operation.

For details on this operation, refer to page 7.



TIMER FUNCTIONS

Off timer

Use this timer function to stop air conditioner operation. The timer operates and air conditioner operation stops when the set time comes.

On timer

Use this timer function to start air conditioner operation. The timer operates and air conditioner operation starts when the set time comes.

Program timer

You can set an integrated On→Off or Off→On timer. Either timer whose configured starting time is closer to the current time works first, and the order of timer function is displayed as follows:

Timer indicator on remote controller display

ON→OFF

ON←OFF

NOTES:

- Time setting for each combination should be within a span of 24 hours.

Sleep timer

To help you to fall asleep comfortably and prevent excessive warming or cooling in sleep, the Sleep timer controls the temperature setting automatically before turning off the air conditioner completely.

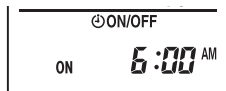
ON/OFF TIMER

To set On/Off timer

- Press the "ON" timer button or "OFF" timer button. Timer indicator lamp on the indoor unit will turn on.

- Press the "SELECT (Δ▽)" buttons to set the time. When the set time comes, the air conditioner will automatically turn on/off.

Set range
12:00 AM - 11:55 PM
(5 minute increments)



Example:
On timer set for 6:00 AM

● To cancel

- Press the "CANCEL" button to cancel the timer function.
- The timer can also be cancelled by changing to other timer function by pressing the "SLEEP" button.

PROGRAM TIMER

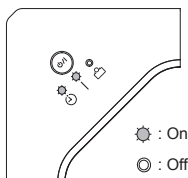
To set Program timer

- Set the desired times for On timer and Off timer. (See "To set the On/Off timer".)



Example: Off→On timer

Operation indicator lamp and Timer indicator lamp on the indoor unit will turn on.



- After both On and Off timers are set, the remote controller will automatically indicate the Program timer setting. (ON → OFF, ON ← OFF will display)

● To cancel

- Press the "CANCEL" button to cancel the timer function.
- The timer can also be cancelled by changing to other timer function by pressing the "SLEEP" button.

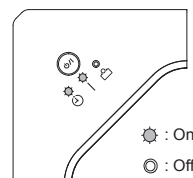
SLEEP TIMER

Instructions relating to heating (*) are applicable only to Heating and Cooling model (Reverse Cycle).

To set Sleep timer

- Press the "SLEEP" button to activate the Sleep timer.

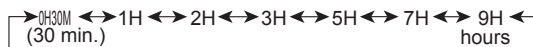
Operation indicator lamp and Timer indicator lamp on the indoor unit will turn on.



- Adjust the time by pressing the "SELECT (Δ▽)" buttons.

(About 5 seconds later, the remote controller display returns to standby screen.)

Each time you press the button, the time changes as follows:

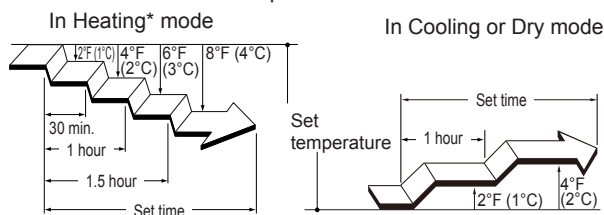


To repeat the timer, press the "SLEEP" button when the SLEEP indicator is not displayed on the remote controller display.

● To cancel

- Press the "CANCEL" button to cancel the timer function.
- The timer can also be cancelled by changing to other timer functions by pressing the "ON" or "OFF" timer buttons.

To help you to fall asleep comfortably and prevent excessive warming or cooling in sleep, the Sleep timer controls the temperature setting automatically in accordance with the set time shown as follows. The air conditioner completely turns off after the set time has elapsed.

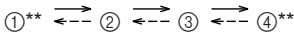


ADJUSTING THE AIR CIRCULATION

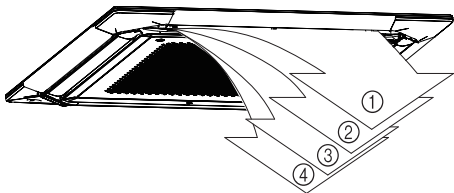
Instructions relating to heating (*) are applicable only to Heating and Cooling model (Reverse Cycle).
Start air conditioner operation before performing this procedure.

Vertical air direction adjustment

- To set the operation mode**
Press the "SET (Vertical airflow)" button to adjust the direction of the vertical airflow.
Each time the button is pressed, the air direction range will change as follows (**Double beeping sound to notify setting):



The remote controller display does not change.
Recommended airflow direction setting:
①, ②, ③, ④ : During Cooling/Heating*/Dry/Fan mode



- The vertical airflow direction is set automatically as shown, in accordance with the operation mode.
During Cooling/Dry/Fan mode:
Horizontal flow ②
During Heating mode*:
Downward flow ④ (18, 24, 30, 36 type), ③ (42, 48 type)
- During Auto mode, for the first minute after beginning operation, airflow will be horizontal ②; the air direction cannot be adjusted during this period.
Even if the flow direction is set, it may operate at a different position at the start of Heating* mode, during defrost, or when Auto is selected.

Horizontal air direction adjustment

This function cannot be used.

Swing operation

Begin air conditioner operation before performing this procedure.

To use Swing operation

Press the "SWING" button.
The SWING indicator will display on the remote controller display.
In this operation, the airflow direction louvers will swing automatically to direct the airflow both up and down.

To stop Swing operation

Press the "SWING" button once again.
The SWING indicator will go out.
Airflow direction will return to the setting before swing was begun.

About Swing operation

The type of operation mode	Range of swing
Cooling/Heating*/Dry/Fan	① to ④

Swing operation may stop temporarily when the air conditioner's fan is not operating, or when operating at very low speeds

NOTES

- Attempting to move up/down air direction flaps manually could result in improper operation; in this case, stop operation and restart. The louvers should begin to operate properly again.
- When used in a room with infants, children, elderly or sick persons, the air direction and room temperature should be considered carefully when making settings.
- The position of the louver which is set for Individual VT (vertical) hold function, cannot be changed.
When all louvers are set for Individual VT hold function, you cannot change the position with this operation.

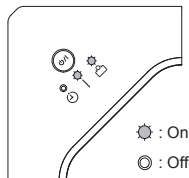
ECONOMY OPERATION

Instructions relating to heating (*) are applicable only to Heating and Cooling model (Reverse Cycle).

Begin air conditioner operation before performing this procedure.

To use Economy operation

Press the "ECONOMY" button.
The Economy indicator lamp will turn on.
Economy operation begins.



To stop Economy operation

Press the "ECONOMY" button again.
The Economy indicator lamp will turn off.
Normal operation begins.

i NOTES

About Economy operation

- During the monitor period in the Auto mode, Economy operation will not start even if Economy operation is selected by pressing the "ECONOMY" button. Economy operation will start automatically after the monitor period is over.
- During Economy operation, the room temperature will be a little higher than the set-temp under Cooling mode and lower than the set-temp under Heating* mode. Therefore, the Economy operation is able to save more energy than other normal operations.

MIN. (MINIMUM) HEAT OPERATION

Instructions relating to heating (*) are applicable only to Heating and Cooling model (Reverse Cycle).

NOTES: In group control, where 2 or more units or remote controllers are in a system, this operation cannot be used.

To use MIN. HEAT operation*

Press the "MIN. HEAT" button.

The Operation indicator lamp will turn off, and the Economy indicator lamp will turn on.



While MIN. HEAT operation is in progress, only the following operation can be used.

- SET

To stop MIN. HEAT operation*

Press the Start/Stop button.

Then the operation stops and the Economy indicator lamp will turn off.

i NOTES

About MIN. HEAT operation*

- The Heating mode will not operate if the room temperature is high enough.
- The room temperature can be maintained at 50°F (10°C) by pressing the "MIN. HEAT" button so as to prevent the room temperature from falling too far.
- In case of multi-type air conditioner, if other indoor unit is used for heating, the temperature of the room where MIN. HEAT operation is applied will rise. When using MIN. HEAT operation, we recommend all indoor units should be run under MIN. HEAT operation.
- You cannot use this operation with the wired remote controller.

FAN CONTROL FOR ENERGY SAVING

To use Fan Control for Energy Saving

- Press the Start/Stop button until only the clock is displayed.
- Press the "FAN" button for at least 5 seconds until the current Fan Control "FC" status is displayed.
- Press the "TEMP. (^ v)" buttons to switch between on or off.
- Press the Start/Stop button to send the setting to the indoor unit. After the status is sent, the display will automatically return to the original screen.



- Factory setting of this function is off.
- If no buttons are pressed within 30 seconds after the "FC" status is displayed, the system returns to the original clock display. In this case, start again from step 1.

OTHER SETTINGS AND OPERATION

Remote controller custom code

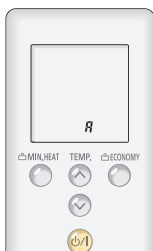
When two or more air conditioners are installed in a room and the remote controller is operating an air conditioner other than the one you wish to set, change the custom code of the remote controller to operate only the air conditioner you wish to set (4 selections possible).

When two or more air conditioners are installed in a room, please contact your retailer to set the individual air conditioner custom codes.

Selecting the remote controller custom code

Use the following steps to select the custom code of the remote controller. (Note that the air conditioner cannot receive a signal if it has not been set for the matching custom code.)

- 1 Press the Start/Stop button until only the clock is displayed on the remote controller display.
- 2 Press the "MODE" button for at least 5 seconds to display the current custom code (initially set to A).
- 3 Press the "TEMP. (▲ ▼)" buttons to change the custom code between A↔B↔C↔D. Match the code on the display to the air conditioner custom code.
- 4 Press the "MODE" button again to return to the clock display. The custom code will be changed.



- If no buttons are pressed within 30 seconds after the custom code is displayed, the system returns to the original clock display. In this case, start again from step 1.
- The air conditioner custom code is set to "A" prior to shipment. Contact your retailer to change the custom code.
- If you do not know the air conditioner custom code setting, try each of the custom codes (A→B→C→D) until you find the code which operates the air conditioner.

Manual Auto operation

Use Manual Auto operation in the event the remote controller is lost or otherwise unavailable.

How to use the main unit controls

Press the Manual Auto button more than 3 seconds and less than 10 seconds on the main unit control panel. (See page 2)

To stop operation, press the Manual Auto button for 3 seconds.

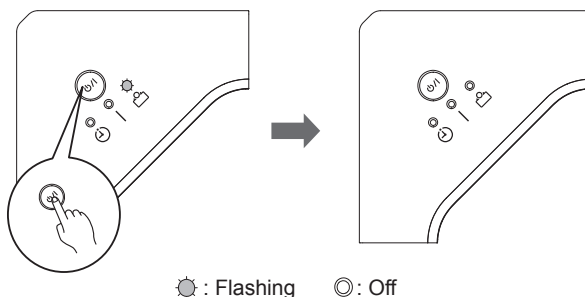
- When the air conditioner is operated with the controls on the main unit, it will operate under the same mode as the Auto mode selected on the remote controller (see page 4).
- The fan speed selected will be AUTO and the temperature setting will be standard. (76 °F (24 °C))

CLEANING AND CARE

Filter Reset

- This function can be used if set correctly during installation. Please consult authorized service personnel when using this function.
- The Economy indicator lamp turns on when it is time to clean the air filter.

After turning the power on, press the Manual Auto button for 2 seconds or less on the indoor unit.



TROUBLESHOOTING

Instructions relating to heating (*) are applicable only to Heating and Cooling model (Reverse Cycle).



WARNING



In the event of a malfunction (burning smell, etc.), immediately stop operation, turn off the electrical breaker, and consult authorized service personnel. Merely turning off the unit's power switch will not completely disconnect the unit from the power source. Always be sure to turn off the electrical breaker to ensure that power is completely off.

Before requesting service, perform the following checks:

NORMAL FUNCTION

Does not operate immediately

- If the unit is stopped and then immediately started again, the compressor will not operate for about 3 minutes, in order to prevent fuse blowouts.
- Whenever the electrical breaker is turned off then on again, the protection circuit will operate for about 3 minutes, preventing unit operation during that period.

Noise is heard

- During operation and immediately after stopping the unit, the sound of water flowing in the air conditioner's piping may be heard. Also, noise may be particularly noticeable for about 2 to 3 minutes after starting operation (sound of coolant flowing).
- During operation, a slight squeaking sound may be heard. This is the result of minute expansion and contraction of the front cover due to temperature changes.

- * ● During Heating mode, a sizzling sound may be heard occasionally. This sound is produced by the Automatic Defrosting operation.

<<See the operating manual of the indoor unit.>>

Smells

- Some smell may be emitted from the indoor unit. This smell is the result of room smells (furniture, tobacco, etc.) which have been taken into the air conditioner.

Mist or steam are emitted

- During Cooling or Dry mode, a thin mist may be seen emitted from the indoor unit. This results from the sudden cooling of room air by the air emitted from the air conditioner, resulting in condensation and misting.

- * ● During Heating mode, the outdoor unit's fan may stop, and steam may be seen rising from the unit. This is due to the Automatic Defrosting operation.

<<See the operating manual of the indoor unit.>>

Airflow is weak or stops

- Indoor unit fan may start later than the outdoor unit fan, or it may stop when the outdoor unit fan is not operating. This is due to the Fan Control for Energy Saving operation.
- To disable this operation, refer to page 7. (This operation cannot be disabled in AUTO fan mode.)

- * ● When Heating mode is started, fan speed is temporarily very low, to allow internal parts to warm up.

- * ● During Heating mode, if the room temperature rises above the thermostat setting, the outdoor unit will stop, and the indoor unit will operate at very low fan speed. If you wish to warm the room further, set the thermostat to a higher setting.

- * ● During Heating mode, the unit will temporarily stop operation (maximum of 15 minutes) as the Automatic Defrosting operation. During the Automatic Defrosting operation, the Operation indicator lamp will flash.

- The fan may operate at very low speed during Dry mode or when the unit is monitoring the room's temperature.

- During Quiet operation, the fan will operate at very low speed.

- In the monitor Auto operation, the fan will operate at very low speed.

Auto off operation does not operate even if there is no one in the room

- The sensor may incorrectly detect people even if there is no one in the room.

The flow direction does not change according to the setting or does not change at all

- * ● Even if the flow direction is set, it may operate temporarily at a different position at the start of Heating mode, during defrost, or when Auto is selected.

Water is produced from the outdoor unit

- * ● During Heating mode, water may be produced from the outdoor unit due to the Automatic Defrosting operation.
<<See the operating manual of the indoor unit.>>

Humidity does not drop

In the case of Dry mode.

- In some conditions of the room, the humidity does not drop.
- In order to lower the humidity, set a lower room temperature.

CHECK ONCE MORE

Does not operate at all

- Has the circuit breaker been turned off?
- Has there been a power failure?
- Has a fuse blown out, or a circuit breaker been tripped?
- Is the timer operating?

Poor cooling (or heating*) performance

- Is the air filter dirty?
- Are the air conditioner's intake grille or outlet port blocked?
- Did you adjust the room temperature settings (thermostat) correctly?
- Is there a window or door open?
- In the case of Cooling operation, is a window allowing bright sunlight to enter? (Close the curtains.)
- In the case of Cooling mode, are there heating apparatus and computers inside the room, or are there too many people in the room?
- Is the unit set for Quiet operation?
- Is the air conditioner in Economy operation?
- Is the unit controlled by the Demand response operation? (Applicable only if this operation is available.)

If the problem persists after performing these checks, or if you notice burning smells, stop operation immediately, disconnect the power supply, and consult with authorized service personnel.