

AUTO LOUVER GRILLE
for SLIM DUCT TYPE

SERVICE MANUAL

UTD-GXSA-W

UTD-GXSB-W

UTD-GXSC-W

UTD-GXTA-W

UTD-GXTB-W

UTD-GXTC-W

CONTENTS

SPECIFICATIONS . . . 1

DIMENSIONS 2

PARTS 3

ACCESSORIES 6

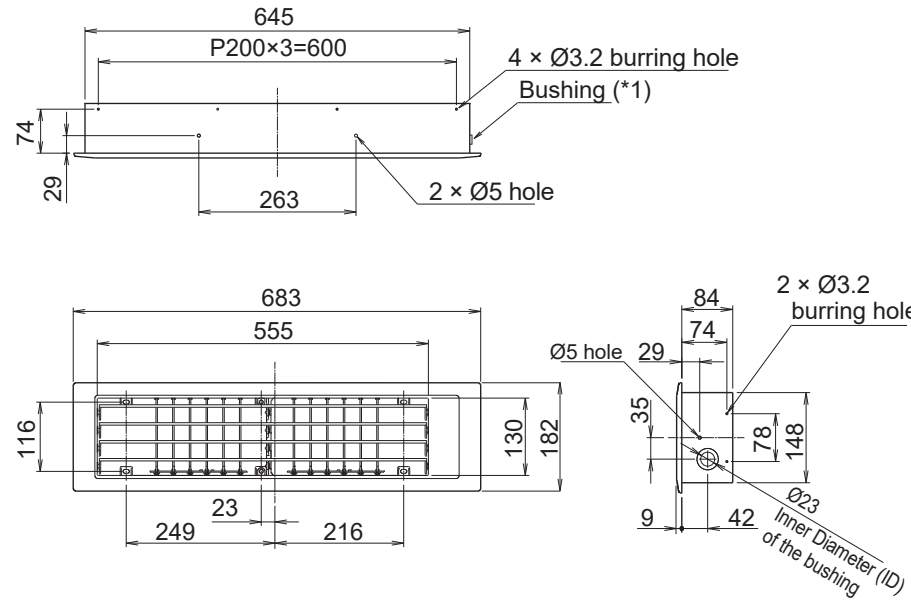
SPECIFICATIONS

Model name			UTD-GXSA-W UTD-GXTA-W	UTD-GXSB-W UTD-GXTB-W	UTD-GXSC-W UTD-GXTC-W
Power supply			Connecting with Control box of indoor unit		
Fixing of Auto louver grille			Screw fixing to flange or rectangular duct		
Extension square duct limit			1.0 m (Max. duct length between indoor unit and grille)		
Dimensions (D × W × H)	Net	mm	182 × 683 × (84+9)	182 × 883 × (84+9)	182 × 1,083 × (84+9)
Weight	Net	kg	2.0	2.5	3.0
	Gross		3.0	3.5	4.0
Color			White		
Louver motor			Stepping motor		
Material			Flame retardant ABS		
Accessories			Fitting flame, etc.		
Operation range	Cooling	°C	18 to 32		
		%RH	80 % or less		
	Heating	°C	16 to 30		

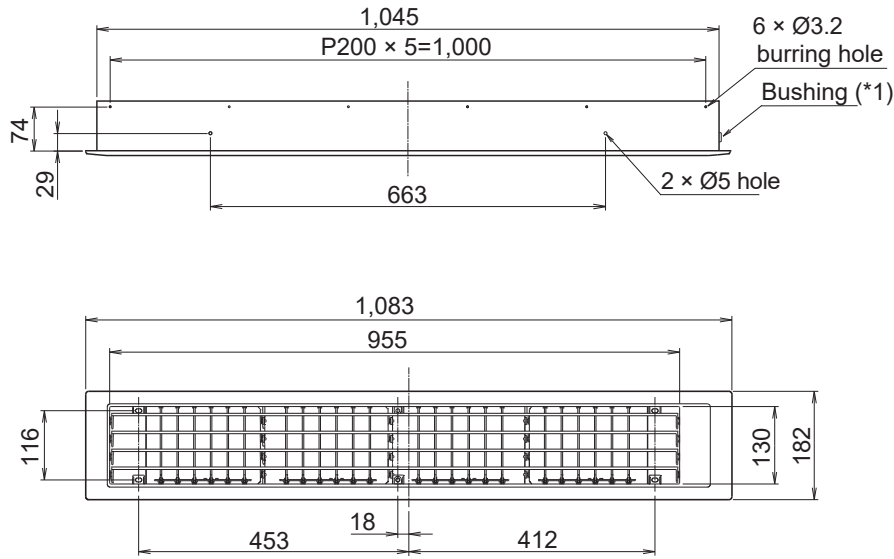
DIMENSIONS

unit : mm

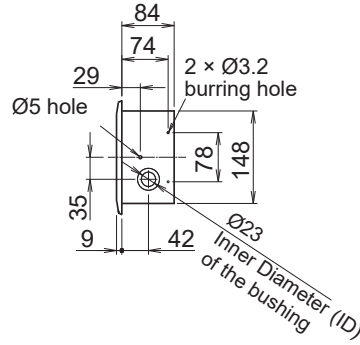
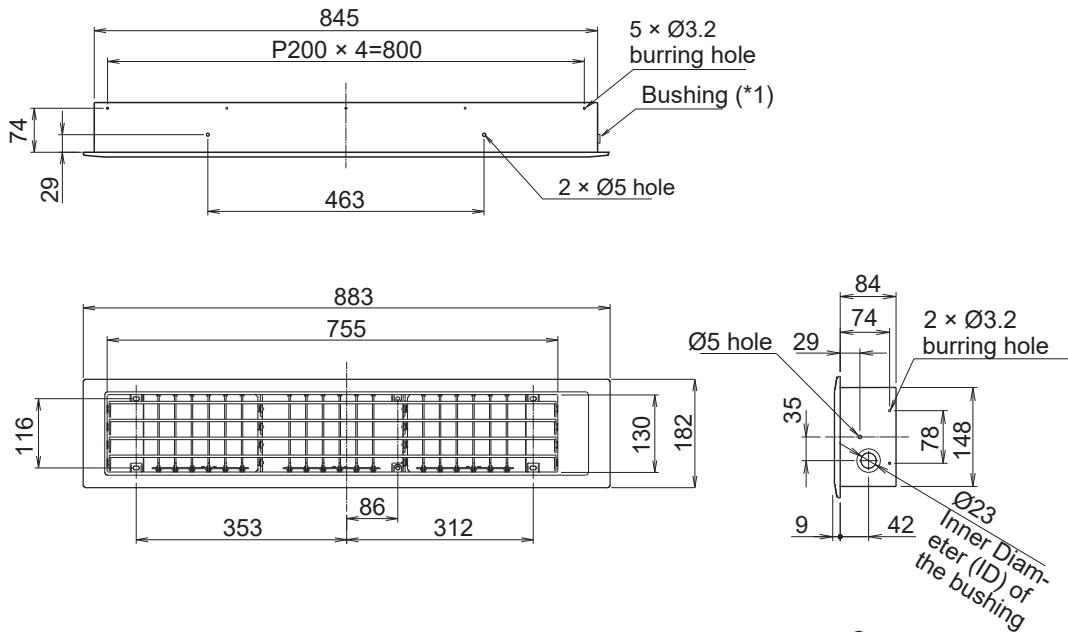
UTD-GXSA-W
UTD-GXTA-W



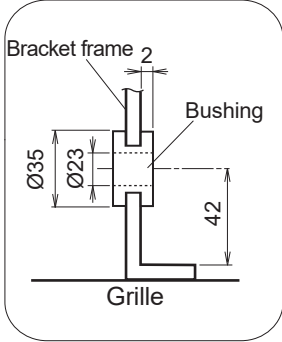
UTD-GXSC-W
UTD-GXTC-W

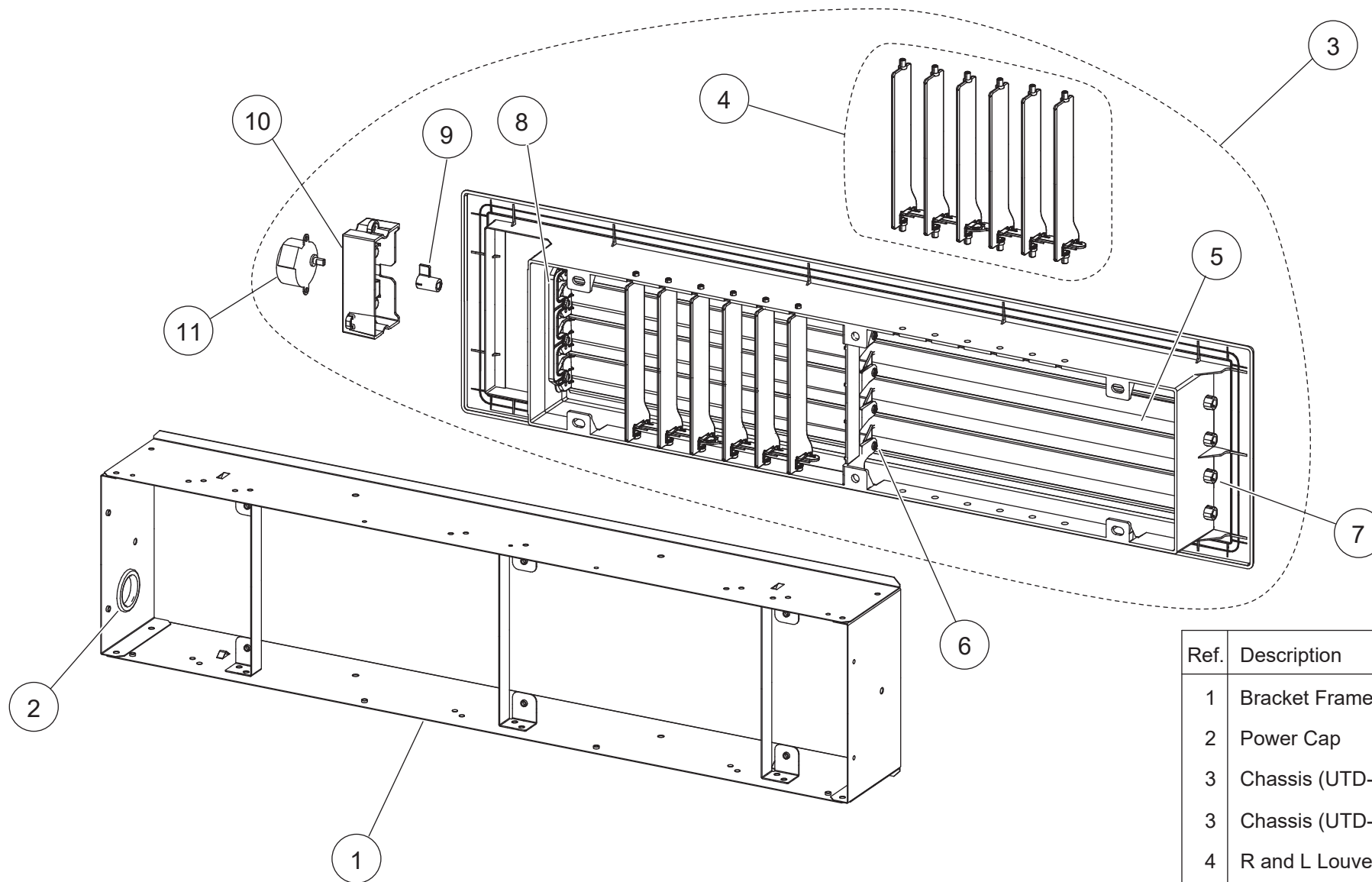


UTD-GXSB-W
UTD-GXTB-W



*1) Detailed drawing of bushing

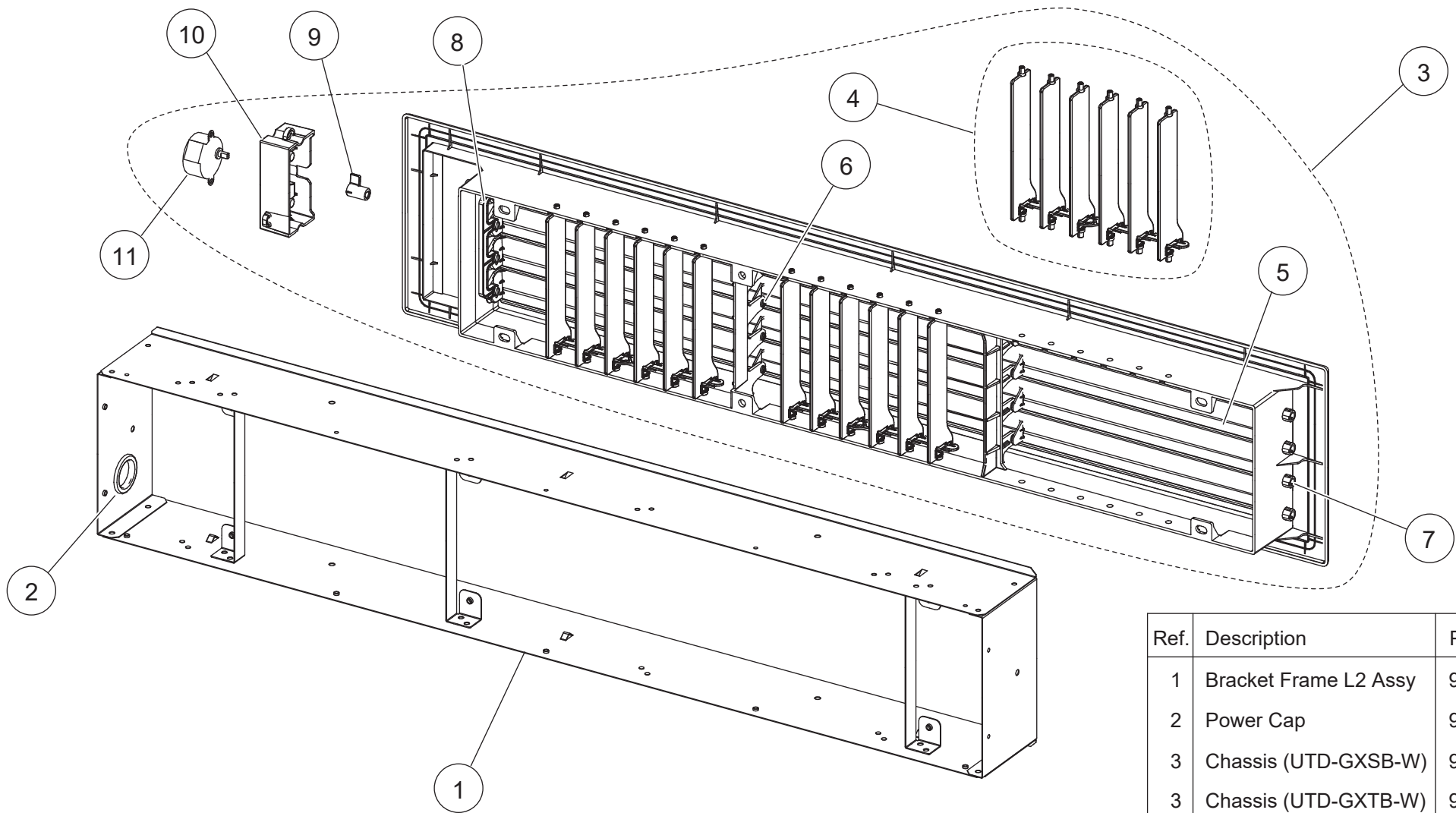




PARTS

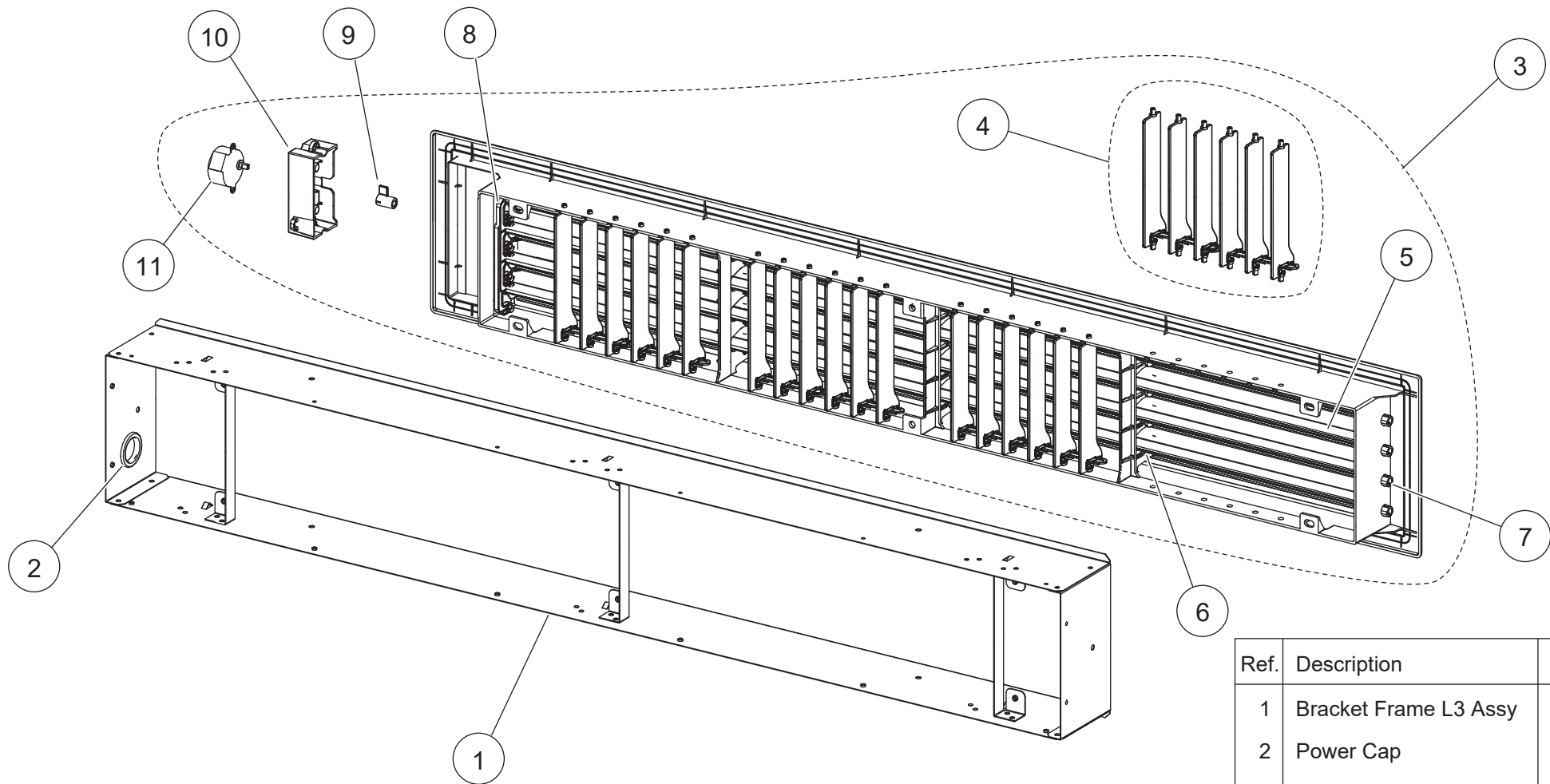
UTD-GXSA-W
UTD-GXTA-W

Ref.	Description	Part number	
1	Bracket Frame L1 Assy	9380197003	
2	Power Cap	9352173011	
3	Chassis (UTD-GXSA-W)	9380264033	
3	Chassis (UTD-GXTA-W)	9380264095	
4	R and L Louver Assy	9380287001	
5	U and D Louver Sub Assy	9380286004	
6	Bush C	9380502005	
7	Bush B	9312156023	
8	Joint UD	9380207016	
9	Louver Shaft	9380369011	
10	Motor Case	9380210009	
11	Stepping Motor	9900637019	




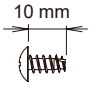

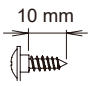
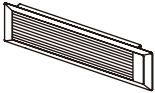

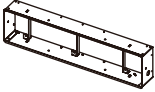


UTD-GXSB-W
UTD-GXTB-W

Ref.	Description	Part number	
1	Bracket Frame L2 Assy	9380197010	
2	Power Cap	9352173011	
3	Chassis (UTD-GXSB-W)	9380264040	
3	Chassis (UTD-GXTB-W)	9380264101	
4	R and L Louver Assy	9380287001	
5	U and D Louver Sub Assy	9380286011	
6	Bush C	9380502005	
7	Bush B	9312156023	
8	Joint UD	9380207016	
9	Louver Shaft	9380369011	
10	Motor Case	9380210009	
11	Stepping Motor	9900637019	



Ref.	Description	Part number	
1	Bracket Frame L3 Assy	9380197027	
2	Power Cap	9352173011	
3	Chassis (UTD-GXSC-W)	9380264057	
3	Chassis (UTD-GXTC-W)	9380264118	
4	R and L Louver Assy	9380287001	
5	U and D Louver Sub Assy	9380286028	
6	Bush C	9380502005	
7	Bush B	9312156023	
8	Joint UD	9380207016	
9	Louver Shaft	9380369011	
10	Motor Case	9380210009	
11	Stepping Motor	9900637019	

ACCESSORIES

Part name	Exterior	Q'ty	Part name	Exterior	Q'ty
Installation manual		1	Screw A		16
Operating manual		1	Screw B		6
Grille		1	Cable clip		2
Bracket frame		1	Cable tie		3
Bushing		1			

