

Inverter Driven Heat Pump

18,000 BTU Single Zone Floor/Ceiling Mounted

Job Name _____
 Location _____
 Engineer _____
 Submitted To _____
 Submitted By _____
 Reference _____

Date _____
 Approval _____
 Construction _____
 Unit No _____
 Drawing No _____

PRODUCT FEATURES

Auto Changeover
 24 Hr. Timer
 Floor/Ceiling Mount
 Accepts Fresh Air (Field Supplied)
 Auto Restart
 OF Low Ambient Cooling
 Auto Louver
 Auto Fan Mode



MODEL NUMBERS

Indoor Unit	ABU18RULX
Outdoor Unit	AOU18RLX
System	18RULX

EFFICIENCIES

SEER	16
EER	10.90
HSPF	8.50

OUTDOOR TEMPERATURE OPERATION RANGE

Cooling	*F(*C)	0 to 115 (-18 to 46)
Heating		14 to 75 (-10 to 24)

CAPACITIES

Cooling	Rated	BTU/hW	17,800
	Max.		5000-21500
Heating	Rated		21,500
	Max.		5000-25600

LINESET REQUIREMENTS

Connection Method			Flare
Liquid	in (mm)		Ø1/4 (6.35)
Gas			Ø1/2 (12.70)
Pre-Charge Length	ft (m)		49 (15)
Minimum Length			16 (5)
Maximum Length			164(50)
Max. Height Diff.			66 (20)

INDOOR DIMENSIONS & WEIGHT

Net (H x W x D)	in	7 - 27/32 x 38 - 31/32 x 25 - 25/32
	mm	199 x 990 x 655
Gross (H x W x D)	in	12 - 19/32 x 45 - 9/32 x 31 - 3/3
	mm	320 x 1150 x 790
Net Weight	lb (kg)	75 (34)
Gross Weight		97 (44)

OUTDOOR DIMENSIONS & WEIGHT

Net (H x W x D)	in	32- 11/16 x 35- 7/16 x 13
	mm	830 x 900 x 330
Gross (H x W x D)	in	38- 3/16 x 41- 11/32 x 17- 17/32
	mm	970 x 1050 x 445
Net Weight	lb (kg)	141(64)
Gross Weight		154(70)

Warranty Information



6 Year Compressor, 2 Year Parts out-of-the-box Warranty

ACCESSORIES

FJ-IR-WIFI-1NA	Intesis IR WiFi module
FJ-RC-WIFI-1NA	Intesis Wired WiFi module
UTY-RNBYU	Wired Remote



Indoor Unit ETL#: 3170288
 Outdoor Unit ETL#: 91987

Due to continuous product improvements, specifications are subject to change without notice. Please log in to the Fujitsu Portal for the most up-to-date documentation
<https://portal.fujitsugeneral.com>

Effective Date: 11/2/2018

Version 18RULX -2018A

Fujitsu General America, Inc. • 353 Route 46 West Fairfield, NJ 07004 • Toll Free: (888) 888-3424 • www.fujitsugeneral.com

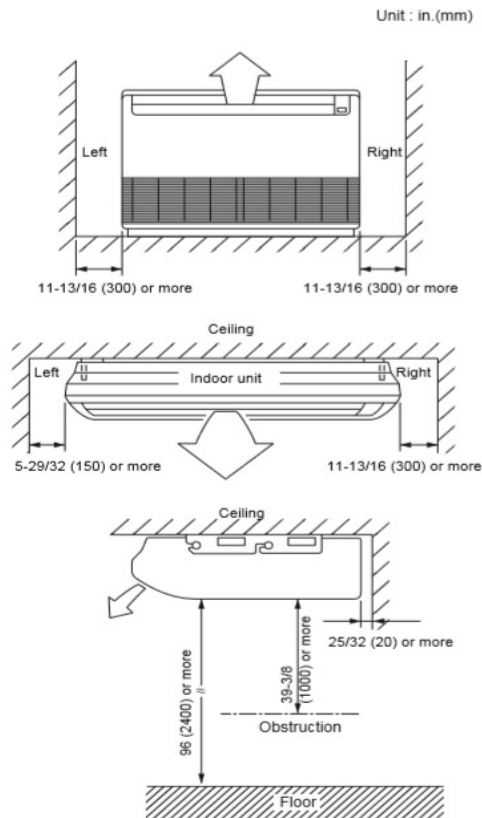
Inverter Driven Heat Pump

18,000 BTU Single Zone Floor/Ceiling Mounted

FAN DATA				
Indoor Unit Airflow Rate	Cooling	High	CFM (m3/h)	459(780)
		Medium		383(650)
		Low		324(550)
	Heating	High		459(780)
		Medium		383(650)
		Low		324(550)
Outdoor Unit Airflow Rate	Cooling		1942(3300)	
	Heating		1942(3300)	
SOUND PRESSURE				
Indoor Unit	Cooling	High	dB (A)	43
		Medium		39
		Low		35
	Heating	High		43
		Medium		39
		Low		35
Outdoor Unit	Cooling		51	
	Heating		51	
REFRIGERANT				
Type			R410A	
Charge	lb oz	4lb. 3-1/32oz.		
	kg	1,900		
Oil Type	POE (RB68)			

ELECTRICAL SPECIFICATIONS				
Voltage/Frequency/Phase			208 / 230V	
Voltage Range			187 - 253V ~ 60Hz	
Current	Cooling	Rated	A	7.0
	Heating	Rated		8.9
Maximum Operating Current		Cooling		12.5
		Heating		12.5
Starting Current				9.1
Maximum Circuit Breaker				
Input Power	Cooling	Rated	kW	1.61
		Max		2.88
	Heating	Rated		2.05
		Max		2.88
OTHER				
Moisture Removal		pints/h (L/h)		2.5(5.3)
Energy Star				No
Drain hose		Material		ABS
Size	in (mm)	Ø31/32(Ø29) (I.D.), Ø1-5/32(Ø25) (O.D.)		
Operation Range	Cooling	°F (°C)	0 to 115 (-18 to 46)	
	Heating	°F (°C)	14 to 75 (-10 to 24)	

Mounting Postion:



The Fujitsu logo is a worldwide trademark of Fujitsu General Limited. The Halcyon logo and name is a worldwide trademark of Fujitsu General Limited and is a registered trademark in Japan, the USA and other countries or areas. Copyright 2018 Fujitsu General America, Inc. Fujitsu's products are subject to continuous improvements. Fujitsu reserves the right to modify product design, specifications and information in this brochure without notice and without incurring any obligations.

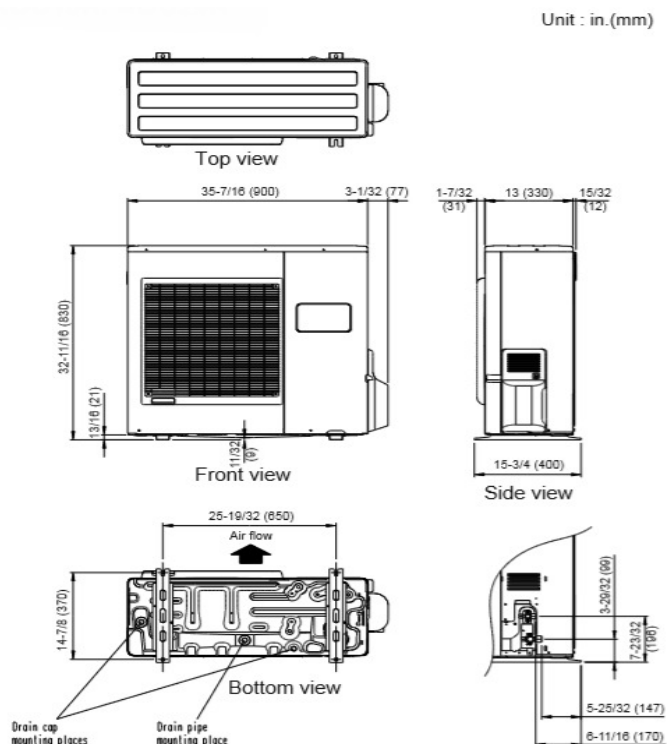
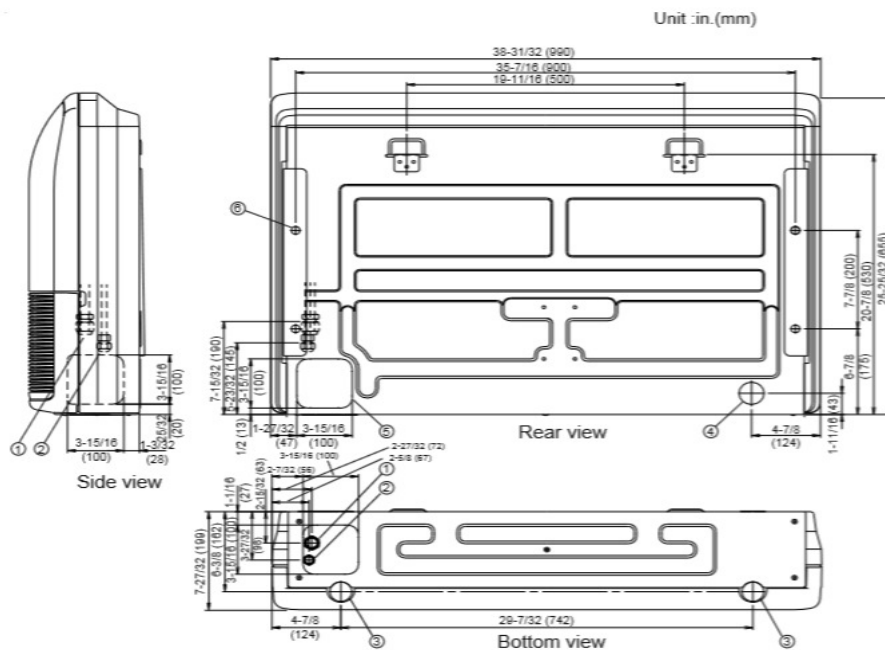
Note: Specifications are based on the following conditions:
Cooling: Indoor temperature of 80°F (26.7°C) DB/67°F (19.4°C) WB, and outdoor temperature of 95°F (35°C) DB/75°F (23.9°C) WB. Heating: Indoor temperature of 70°F (21.1°C) DB/60°F (15.6°C) WB, and outdoor temperature of 47°F (8.3°C) DB/43°F (6.1°C) WB. Pipe length: 25ft. (7.5m), Height difference: 0ft. (0m) (Outdoor unit - indoor unit).

Inverter Driven Heat Pump

18,000 BTU Single Zone Floor/Ceiling Mounted

DIMENSIONS

Units: In. (mm)



The Fujitsu logo is a worldwide trademark of Fujitsu General Limited. The Halcyon logo and name is a worldwide trademark of Fujitsu General Limited and is a registered trademark in Japan, the USA and other countries or areas. Copyright 2018 Fujitsu General America, Inc. Fujitsu's products are subject to continuous improvements. Fujitsu reserves the right to modify product design, specifications and information in this brochure without notice and without incurring any obligations.

Note: Specifications are based on the following conditions:
Cooling: Indoor temperature of 80°F (26.7°C) DB/67°F (19.4°C) WB, and outdoor temperature of 95°F (35°C) DB/75°F (23.9°C) WB. Heating: Indoor temperature of 70°F (21.1°C) DB/60°F (15.6°C) WB, and outdoor temperature of 47°F (8.3°C) DB/43°F (6.1°C) WB. Pipe length: 25ft. (7.5m), Height difference: 0ft. (0m) (Outdoor unit – indoor unit).