

Inverter Driven Heat Pump

24,000 BTU Single Zone Wall Mounted System

Job Name \_\_\_\_\_  
 Location \_\_\_\_\_  
 Engineer \_\_\_\_\_  
 Submitted To \_\_\_\_\_  
 Submitted By \_\_\_\_\_  
 Reference \_\_\_\_\_

Date \_\_\_\_\_  
 Approval \_\_\_\_\_  
 Construction \_\_\_\_\_  
 Unit No \_\_\_\_\_  
 Drawing No \_\_\_\_\_

PRODUCT FEATURES

- Auto Changeover
- 24 hr. Timer
- Auto Louver: 4 way
- Minimum Heat Mode
- Wireless Remote control
- Auto Restart
- Economy Mode
- Auto Fan Mode



MODEL NUMBERS			
Indoor Unit		ASU24RLF	
Outdoor Unit		AOU24RLXFW1	
System		24RLXFW1	
EFFICIENCIES			
SEER		19.5	
EER		12.5	
HSPF		10.6	
COP	kW/kW	3.40	
	Btu/hW	11.6	
OUTDOOR TEMPERATURE OPERATION RANGE			
Cooling	°F(°C)	-5 to 115 (-20 to 46)	
Heating		-5 to 75 (-20 to 24)	
CAPACITIES			
Cooling	Rated	BTU/hW	22,000
	Min.–Max.		9900–27300
Heating	Rated		25,200
	Min.–Max.		7500–36200
LINESET REQUIREMENTS			
Connection Method		Flare	
Liquid	in (mm)	Ø 3/8 (Ø 9.52)	
Gas		Ø 5/8 (Ø 15.88)	
Pre-Charge Length	ft (m)	66 (20)	
Minimum Length		16 (5)	
Maximum Length		164 (50)	
Max. Height Diff.		98 (30)	
INDOOR DIMENSIONS & WEIGHT			
Net (H x W x D)	in	12-5/8 x 39-5/16 x 9	
	mm	320 x 998 x 228	
Gross (H x W x D)	in	12-3/5 x 42-15/16 x 16-7/8	
	mm	319 x 1090 x 429	
Net Weight	lb (kg)	31 (14)	
Gross Weight		40 (18)	
OUTDOOR DIMENSIONS & WEIGHT			
Net (H x W x D)	in	32-11/16 x 35-7/16 x 13	
	mm	830 x 900 x 330	
Gross (H x W x D)	in	39-3/8 x 41-5/16 x 17-1/2	
	mm	1,000 x 1,050 x 445	
Net Weight	lb (kg)	135 (61)	
Gross Weight		152 (69)	

Warranty Information



7 Year Compressor, 5 Year Parts out-of-the-box Warranty



10 Year Compressor, 10 Year Parts Warranty when registered within 60 days of installation in a residence



12 Year Compressor, 12 Year Parts Warranty when registered within 60 days of installation in a residence, and installed by a Fujitsu Elite contractor

ACCESSORIES

UTY-TTRX	3rd Party Thermostat Converter
UTY-RNNUM	Wired Remote
UTY-RVNUM	Wired Remote w/backlight
UTY-RSNUM	Simple Remote
UTY-XWZX	Dry Contact Wire Kit
FJ-RC-WIFI-1NA	Intesis Wired WiFi Module
FJ-IR-WIFI-1NA	Intesis IR WiFi Module
UTY-TFNXZ2	WiFi Interface Module



This system combination is Energy Star qualified



Indoor Unit ETL#: 3170288  
 Outdoor Unit ETL#: 91987

Due to continuous product improvements, specifications are subject to change without notice. Please log in to the Fujitsu Portal for the most up-to-date documentation  
<https://portal.fujitsugeneral.com>

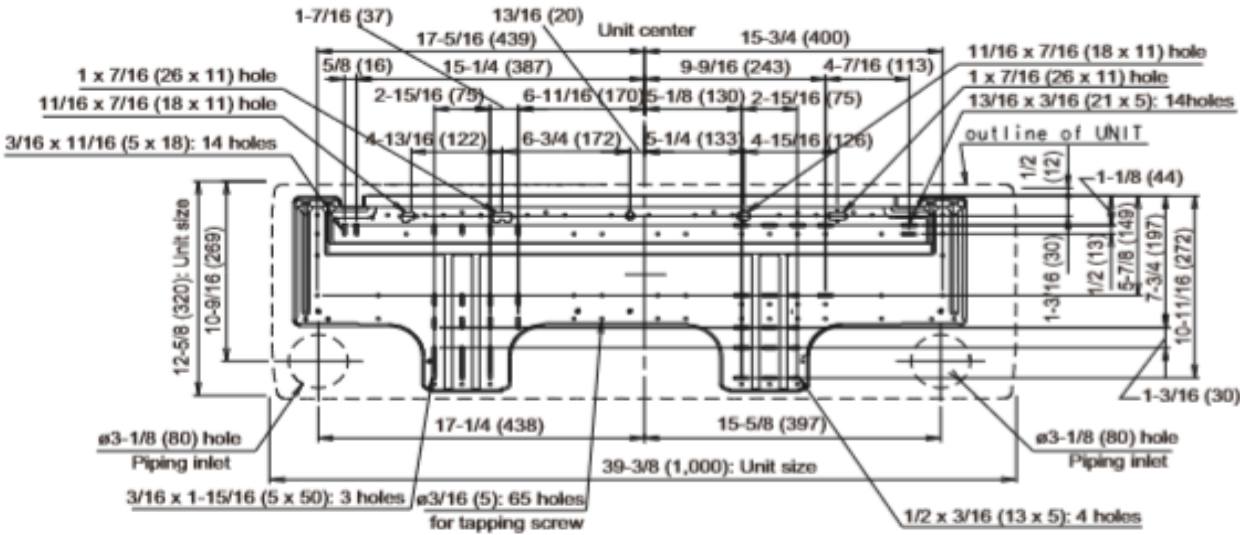
Inverter Driven Heat Pump

24,000 BTU Single Zone Wall Mounted System

FAN DATA				
Indoor Unit Airflow Rate	Cooling	High	CFM (m3/h)	659 (1120)
		Medium		530 (900)
		Low		435 (740)
		Quiet		365 (620)
	Heating	High		677 (1150)
		Medium		530 (900)
		Low		435 (740)
		Quiet		365 (620)
Outdoor Unit Airflow Rate	Cooling			2,001 (3,400)
	Heating			2,119 (3,600)
SOUND PRESSURE				
Indoor Unit	Cooling	High	dB (A)	49
		Medium		42
		Low		37
		Quiet		33
	Heating	High		49
		Medium		42
		Low		37
		Quiet		33
Outdoor Unit	Cooling			54
	Heating			55
REFRIGERANT				
Type				R410A
Charge	lb oz		4 lb 10.1 oz	
	kg		2,100	
Oil Type				POE (RB68)

ELECTRICAL SPECIFICATIONS				
Voltage/Frequency/Phase				208/230V~60HZ
Voltage Range				187-253V~60HZ
Current	Cooling	Rated	A	7.9
	Heating	Rated		10.5
Maximum Operating Current		Cooling		15
		Heating		15.5
Starting Current				10.5
MCA				18
Maximum Circuit Breaker				30
Input Power	Cooling	Rated	kW	1.76
		Min.—Max.		0.58—3.42
	Heating	Rated		2.38
		Min.—Max.		0.50—3.53
Power Factor	Cooling		%	97
	Heating			98.1
OTHER				
Moisture Removal		pints/h (L/h)		3(6.3)
Energy Star				YES
Drain hose	Material			PVC
Size	in (mm)	Ø 15/32 (Ø 12) (I.D.), Ø 5/8 (Ø 16) (O.D.)		
Operation Range	Cooling	°F (°C)	64 to 90 (18 to 32)	
		%RH	80 or less	
	Heating	°F (°C)	88 (30) or less	

Wall Bracket Data:



The Fujitsu logo is a worldwide trademark of Fujitsu General Limited. The Halcyon logo and name is a worldwide trademark of Fujitsu General Limited and is a registered trademark in Japan, the USA and other countries or areas. Copyright 2018 Fujitsu General America, Inc. Fujitsu's products are subject to continuous improvements. Fujitsu reserves the right to modify product design, specifications and information in this brochure without notice and without incurring any obligations.

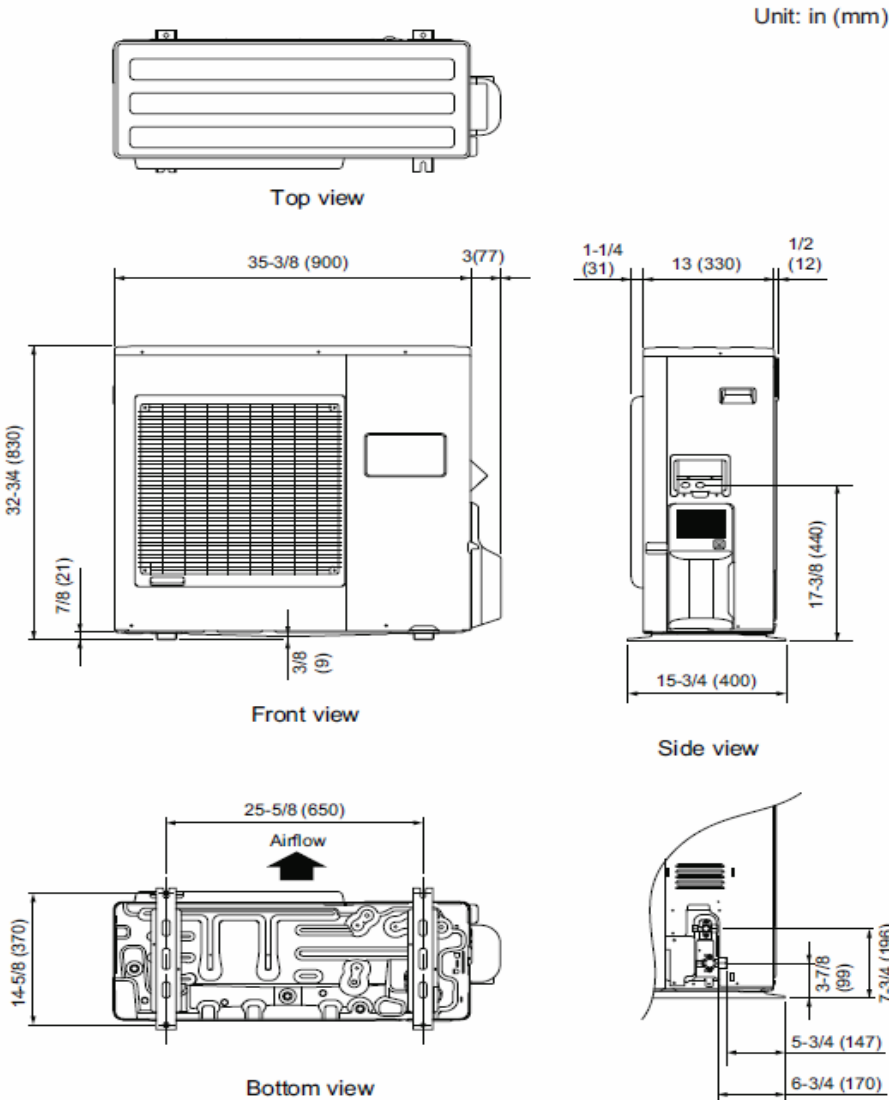
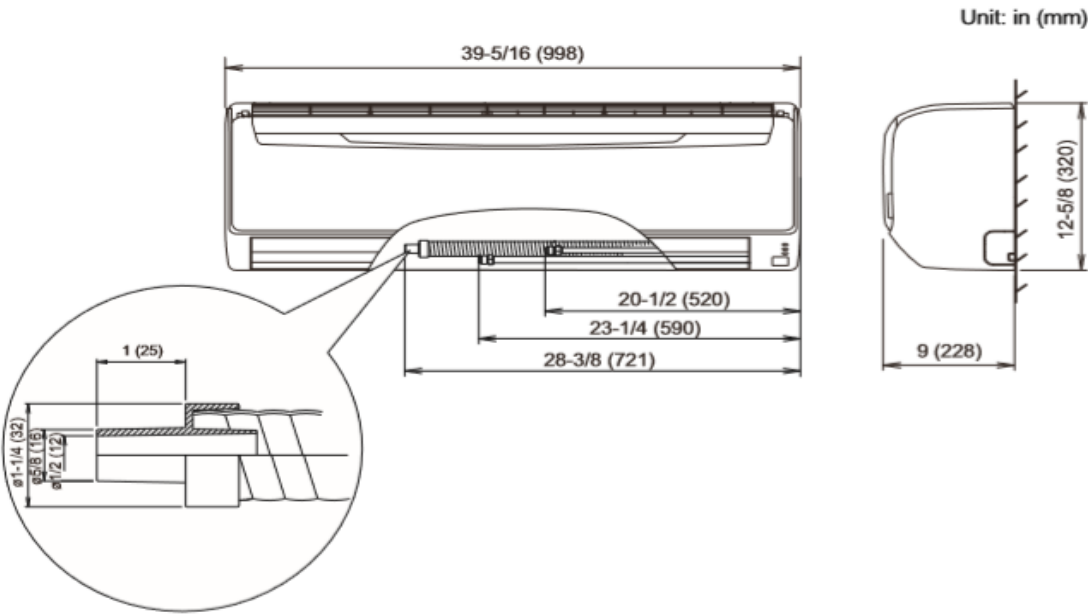
Note: Specifications are based on the following conditions:  
Cooling: Indoor temperature of 80°F (26.7°C) DB/67°F (19.4°C) WB, and outdoor temperature of 95°F (35°C) DB/75°F (23.9°C) WB. Heating: Indoor temperature of 70°F (21.1°C) DB/60°F (15.6°C) WB, and outdoor temperature of 47°F (8.3°C) DB/43°F (6.1°C) WB. Pipe length: 25ft. (7.5m), Height difference: 0ft. (0m) (Outdoor unit – indoor unit).

Inverter Driven Heat Pump

24,000 BTU Single Zone Wall Mounted System

DIMENSIONS

Units: In. (mm)



The Fujitsu logo is a worldwide trademark of Fujitsu General Limited. The Halcyon logo and name is a worldwide trademark of Fujitsu General Limited and is a registered trademark in Japan, the USA and other countries or areas. Copyright 2018 Fujitsu General America, Inc. Fujitsu's products are subject to continuous improvements. Fujitsu reserves the right to modify product design, specifications and information in this brochure without notice and without incurring any obligations.

Note: Specifications are based on the following conditions:  
Cooling: Indoor temperature of 80°F (26.7°C) DB/67°F (19.4°C) WB, and outdoor temperature of 95°F (35°C) DB/75°F (23.9°C) WB. Heating: Indoor temperature of 70°F (21.1°C) DB/60°F (15.6°C) WB, and outdoor temperature of 47°F (8.3°C) DB/43°F (6.1°C) WB. Pipe length: 25ft. (7.5m), Height difference: 0ft. (0m) (Outdoor unit - indoor unit).