

Inverter Driven Heat Pump

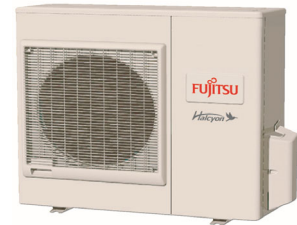
36K BTU Single Zone Wall Mounted System

Job Name _____
 Location _____
 Engineer _____
 Submitted To _____
 Submitted By _____
 Reference _____

Date _____
 Approval _____
 Construction _____
 Unit No _____
 Drawing No _____

PRODUCT FEATURES

Auto Changeover
 24 Hour Timer
 Auto Louver: 4 way
 Minimum Heat Mode
 Quiet Mode
 Auto Restart
 Economy Mode
 Auto Fan



MODEL NUMBERS

Indoor Unit	ASU36RLXB
Outdoor Unit	AOU36RLXB
System	36RLXB

EFFICIENCIES

SEER	15.5
EER	8.5
HSPF	9
COP	2.94
kW/kW	10.0
Btu/hW	

OUTDOOR TEMPERATURE OPERATION RANGE

Cooling	*F(°C)	14 to 115 (-10 to 46)
Heating		5 to 75 (-15 to 24)

CAPACITIES

Cooling	Rated	BTU/hW	33,000
	Min.-Max.		9900-34100
Heating	Rated		34,000
	Min.-Max.		10200-35000

LINESET REQUIREMENTS

Connection Method		Flare
Liquid	in (mm)	Ø 3/8 (Ø 9.52)
Gas		Ø 5/8 (Ø 15.88)
Pre-Charge Length	ft (m)	66 (20)
Minimum Length		16 (5)
Maximum Length		165 (50)
Max. Height Diff.		98 (30)

INDOOR DIMENSIONS & WEIGHT

Net (H x W x D)	in	12-10/16 x 39-5/16 x 9
	mm	320 x 998 x 228
Gross (H x W x D)	in	12-9/16 x 42-15/16 x 16-14/16
	mm	319 x 1090 x 429
Net Weight	lb (kg)	31 (14)
Gross Weight		40 (18)

OUTDOOR DIMENSIONS & WEIGHT

Net (H x W x D)	in	32-11/16 x 35-7/16 x 13
	mm	830 x 900 x 330
Gross (H x W x D)	in	38-3/16 x 41-5/16 x 17-8/16
	mm	970 x 1050 x 445
Net Weight	lb (kg)	134 (61)
Gross Weight		150 (68)



Indoor Unit ETL#: 3170288
 Outdoor Unit ETL#: 91987

Warranty Information



7 Year Compressor, 5 Year Parts out-of-the-box Warranty



10 Year Compressor, 10 Year Parts Warranty when registered within 60 days of installation in a residence



12 Year Compressor, 12 Year Parts Warranty when registered within 60 days of installation in a residence, and installed by a Fujitsu Elite contractor

ACCESSORIES

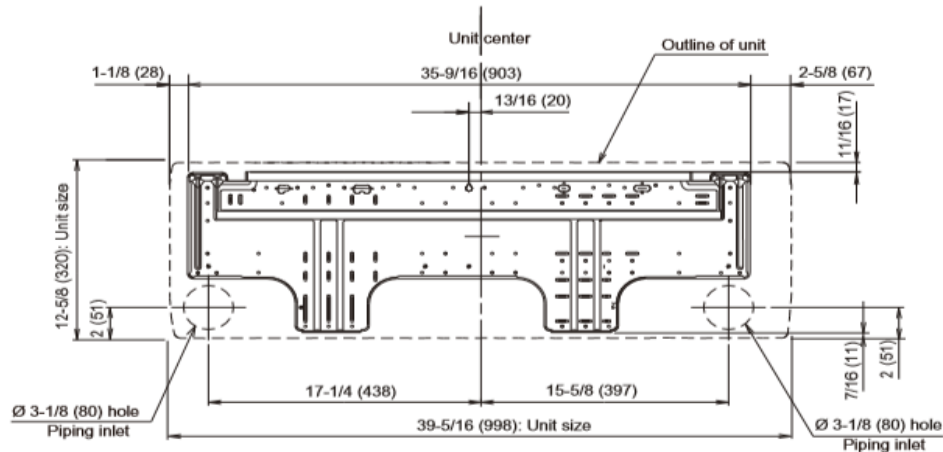
UTY-TTRX	3rd Party Thermostat Converter
FJ-IR-WIFI-1NA	Intesis WiFi IR Module
FJ-RC-WIFI-1NA	Intesis WiFi Wired Module
UTY-TFNXZ2	WiFi Interface Module
UTY-RNNUM	Wired Remote
UTY-RVNUM	Wired Remote w/backlight
UTY-RSNUM	Simple Remote
UTY-XWZX	Dry Contact Wire Kit

36K BTU Single Zone Wall

36K BTU Single Zone Wall Mounted System

FAN DATA					ELECTRICAL SPECIFICATIONS					
Indoor Unit Airflow Rate	Cooling	High	CFM (m3/h)	694 (1180)	Voltage/Frequency/Phase				208/230V ~ 60Hz	
		Medium		530 (900)	Voltage Range				187-253V	
		Low		435 (740)	Current	Cooling	Rated	A	17	
		Quiet		365 (620)		Heating	Rated		14.8	
	Heating	High		694 (1180)	Maximum Operating Current		Cooling		18	
		Medium		530 (900)			Heating		18.8	
		Low		435 (740)	Starting Current		17			
		Quiet		365 (620)	MCA				23.3	
Outdoor Unit Airflow Rate		Cooling	Maximum Circuit Breaker			30				
Heating										
SOUND PRESSURE										
Indoor Unit	Cooling	High	dB (A)	50	Input Power	Cooling	Rated	kW	3.88	
		Medium		42		Heating	Min.—Max.		4.01	
		Low		37			Rated		3.39	
		Quiet		32			Min.—Max.		3.5	
	Heating	High		50	Power Factor	Cooling		%	99	
		Medium		42		Heating		99		
		Low		37	OTHER					
		Quiet		33	Moisture Removal		pints/h (L/h)		4.8(10.1)	
Outdoor Unit		Cooling		Energy Star			NO			
		Heating		52	Drain hose	Material		PVC		
				55		Size	in (mm)	Ø 15/32 (12) (I.D.), 5/8(16)		
REFRIGERANT										
Type		R410A			Operation Range	Cooling	°F (°C)	64 to 90 (18 to 32)		
Charge	lb oz	4lbs. 10.1oz.					%RH	80 or less		
	kg	2				Heating	°F (°C)	88 (30) or less		
Oil Type		POE (RB68)								

Wall Bracket Data:



The Fujitsu logo is a worldwide trademark of Fujitsu General Limited. The Halcyon logo and name is a worldwide trademark of Fujitsu General Limited and is a registered trademark in Japan, the USA and other countries or areas. Copyright 2018 Fujitsu General America, Inc. Fujitsu's products are subject to continuous improvements. Fujitsu reserves the right to modify product design, specifications and information in this brochure without notice and without incurring any obligations.

Note: Specifications are based on the following conditions:

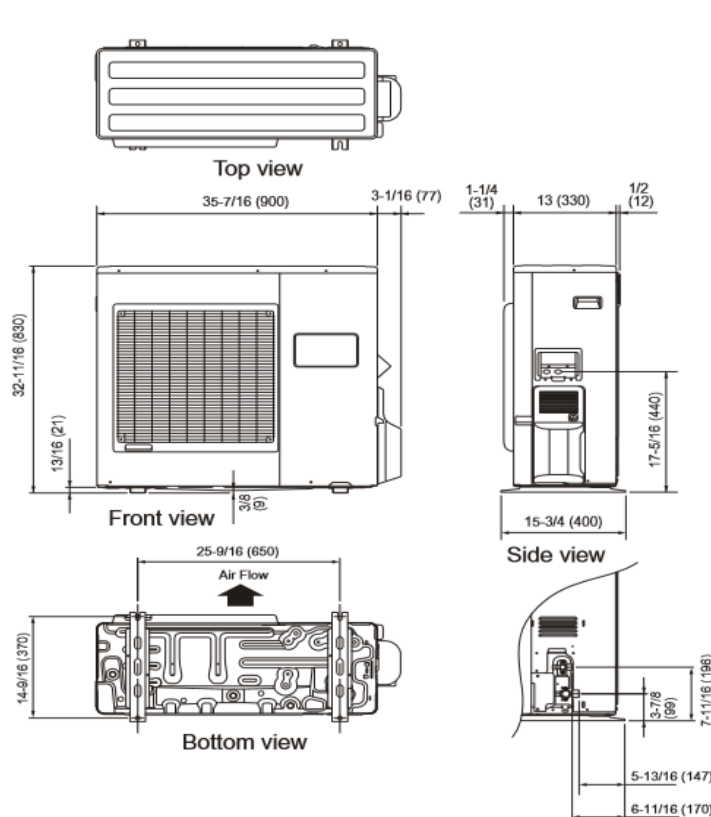
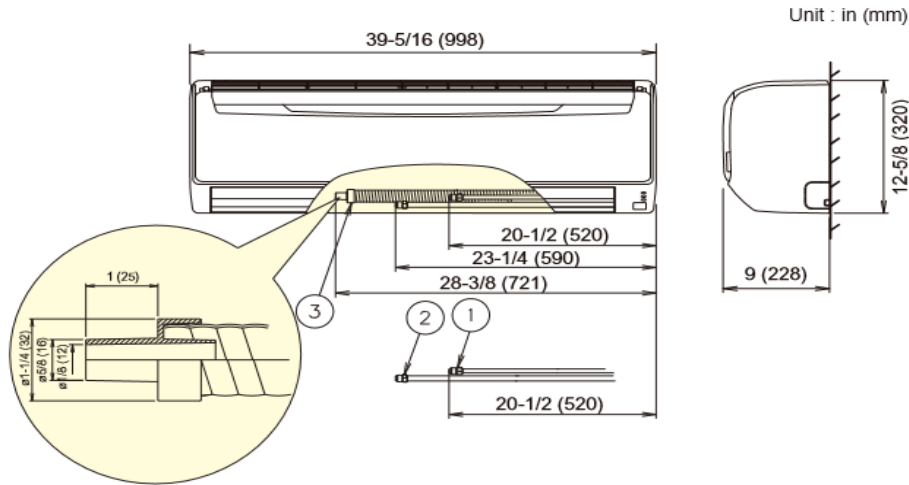
Cooling: Indoor temperature of 80°F (26.7°C) DB/67°F (19.4°C) WB, and outdoor temperature of 95°F (35°C) DB/75°F (23.9°C) WB. Heating: Indoor temperature of 70°F (21.1°C) DB/60°F (15.6°C) WB, and outdoor temperature of 47°F (8.3°C) DB/43°F (6.1°C) WB. Pipe length: 25ft. (7.5m), Height difference: 0ft. (0m) (Outdoor unit – indoor unit).

36K BTU Single Zone Wall

36K BTU Single Zone Wall Mounted System

DIMENSIONS

Units: In. (mm)



The Fujitsu logo is a worldwide trademark of Fujitsu General Limited. The Halcyon logo and name is a worldwide trademark of Fujitsu General Limited and is a registered trademark in Japan, the USA and other countries or areas. Copyright 2018 Fujitsu General America, Inc. Fujitsu's products are subject to continuous improvements. Fujitsu reserves the right to modify product design, specifications and information in this brochure without notice and without incurring any obligations.

Note: Specifications are based on the following conditions:
Cooling: Indoor temperature of 80°F (26.7°C) DB/67°F (19.4°C) WB, and outdoor temperature of 95°F (35°C) DB/75°F (23.9°C) WB. Heating: Indoor temperature of 70°F (21.1°C) DB/60°F (15.6°C) WB, and outdoor temperature of 47°F (8.3°C) DB/43°F (6.1°C) WB. Pipe length: 25ft. (7.5m), Height difference: 0ft. (0m) (Outdoor unit - indoor unit).