

SUBMITTAL - 24KPAS1

Job Name: _____

Date: _____

Location: _____

R32

Indoor Unit: **ASUH24KPAS**

Outdoor Unit: **AOUH24KPAS1**



FEATURES

INDOOR UNIT:

- Compact wall-mounted indoor unit delivering superior comfort and energy-efficient performance
- Indoor unit with ProCore™ (High Corrosion Resistant Copper) coils for long-lasting protection against corrosion
- Whisper-quiet operation with sound levels as low as 31dB
- Multiple fan speed options; Auto, High, Med-High, Med, Med-Low, Low, and Quiet.
- Special Operation modes available:
 - Economy Mode / Energy Saving Mode / Powerful Mode / Minimum Heat Mode / Automatic defrosting operation / Auto-restart function
- Enhanced controls platform for seamless, intuitive operation:
 - Backlit wireless remote controller with luminous buttons for easy visibility, included with the indoor unit
 - Wi-Fi connectivity with Airstage Mobile App monitoring via compatible USB WLAN adapter
 - Extended connectivity with support for third-party interface options
 - Compatible with BACnet and Modbus protocols for seamless integration with building management and Home Automation Systems
- Advanced scheduling and timer options offer greater control over unit operation:
 - Weekly Timer / 24-hr Timer / Sleep Function
- Dual-action Filtration: Apple-Catechin Filter & Ion Deodorizing Filter
- Additional premium features include, but are not limited to:
 - Built-in external input and output for interlocking systems with 3rd party devices (Ex: Fire Alarm, Door Switch, Humidifier, Aux. Heat & more)
 - Multiple Auxiliary Heat logic for optimized heating performance
 - Service monitoring functionality via compatible accessories (UTY-RVRU & UTY-RNRUZ-series)

OUTDOOR UNIT:

- Low GWP R-32 systems for reduced environmental impact
- INVERTER-driven compressor that offers superior performance, comfort, and energy savings
- Special Cooling Operation extends cooling operation down to -4°F (-20°C)
- Compact outdoor unit with extended line set lengths up to 98ft (30m)
- Low-noise outdoor unit operation mode
- Hydro Fin-coated heat exchanger for improved corrosion resistance and coil durability



7 Year Compressor, 5 Year Parts out-of-the-box Warranty.



10 Year Compressor, 10 Year Parts Warranty when registered within 60 days of installation in a residence.



12 Year Compressor, 12 Year Parts Warranty when registered within 60 days of installation in a residence and installed by a Fujitsu Elite contractor.



Due to continuous product improvements, specifications are subject to change without notice. Please log in to the Fujitsu Portal for the most up-to-date documentation <https://connect.fujitsugeneral.com>

Version: 20250106A

-1 of 6-

SUBMITTAL - 24KPAS1

SPECIFICATIONS:

Indoor Unit					ASUH24KPAS		
Outdoor Unit					AOUH24KPAS1		
System Name					24KPAS1		
AHRI Number					215441047		
SEER2		Cooling			Btu/hW	21.5	
EER2						11.7	
HSPF2		Heating			kW/kW	10	
COP2						3.8	
Outdoor Operation Range		Cooling			°F (°C)	14 to 122* ⁸ (-10 to 50* ⁸)	
		Heating				5 to 75 (-15 to 24)	
Indoor Capacity		Cooling		Rated	Btu/h	22000	
				Min.—Max.		4,000—24,400	
		Heating		Rated		24000	
				Min.—Max.		4,150—29,000	
				Rated		14800	
				Max.		24300	
		5°FDB (Outdoor temp.) ²		Rated		20000	
		Max.					
Outdoor Connection pipe	Size	Liquid			in (mm)	Ø1/4 (Ø6.35)	
		Gas				Ø1/2 (Ø12.70)	
	Method					FLARE	
	Pre-charge length					49 (15)	
	Min. length					10 (3)	
	Max. length					98 (30)	
	Max. height difference					82 (25)	
Indoor Dimensions (H × W × D)		Net			in (mm)	11 × 38-9/16 × 9-7/16 (280 × 980 × 240)	
		Gross				12-11/16 × 42-7/16 × 13-5/8 (322 × 1,078 × 346)	
Indoor Weight		Net			lb (kg)	28 (12.5)	
		Gross				36 (16.5)	
Outdoor Dimensions (H × W × D)		Net			in (mm)	24-7/8 × 31-7/16 × 11-7/16 (632 × 799 × 290)	
		Gross				27-1/4 × 37 × 14-3/4 (692 × 940 × 375)	
Outdoor Weight		Net			lb (kg)	86 (39)	
		Gross				93 (42)	
Indoor Fan	Airflow rate	Cooling		High	CFM (m³/h)	689 (1,170)	
				Med—High		583 (990)	
				Med		483 (820)	
				Med—Low		430 (730)	
				Low		377 (640)	
				Quiet		312 (530)	
		Heating		High		600 (1,020)	
				Med—High		553 (940)	
				Med		506 (860)	
				Med—Low		441 (750)	
				Low		377 (640)	
				Quiet		318 (540)	
	Type × Qty					CROSSFLOW FAN × 1	
	Motor output					59	
	Outdoor Fan	Airflow rate	Cooling			CFM (m³/h)	1,719 (2,920)
			Heating				1,560 (2,650)
Type × Qty					PROPELLER FAN × 1		
Motor output					W	49	
Indoor Sound Pressure Level ⁴		Cooling		High	dB (A)	51	
				Med—High		48	
				Med		43	
				Med—Low		40	
				Low		37	
				Quiet		31	
		Heating		High		47	
				Med—High		45	
				Med		43	
				Med—Low		40	
				Low		36	
				Quiet		32	
Outdoor Sound Pressure Level ⁴		Cooling			55		
		Heating			54		

SUBMITTAL - 24KPAS1

SPECIFICATIONS:

Outdoor Refrigerant		Type		R32	
		Charge	lb oz	2 lb 10 oz	
Additional Charge Calculation			g	1200	
			oz/ft	0.22	
			g/m	20	
Outdoor Refrigerant Oil		Type		RMM68AF	
		Amount		in ³ (cm ³) 24.4 (400)	
Indoor Moisture removal			pints/h (L/h)	6.3 (3.0)	
Indoor Drain hose		Material		POLYPROPYLENE + HIGH-DENSITY POLYETHYLENE	
		Tip Diameter		Ø17/32 (Ø13.8) (I.D.), Ø19/32 to 21/32 (Ø15 to 16.8) (O.D.)	
Indoor Operation range		Cooling	°F (°C)	64 to 90 (18 to 32)	
			%RH	80 or less	
		Heating	°F (°C)	60 to 86 (16 to 30)	
Power Supply				208/230 V ~ 60 Hz	
Available Voltage Range				187—253	
System power supply		Voltage		V	
		Frequency		Hz	
		Available voltage range		V	
Indoor Current	Cooling		A	8.2	
	Heating			8.1	
Maximum Operating Current ^{*3}				Cooling	14.4
				Heating	13.9
Outdoor Starting Current				5.6	
MCA ^{*5}				14.4	
Wiring spec. ^{*6}		MAX. CKT. BKR ^{*7}		20	
Indoor Input Power	Cooling		Rated	kW	1.88
			Min.—Max.		0.20—3.20
	Heating	Rated	1.85		
		Min.—Max.	0.21—3.10		
		Rated	1.43		
		Max.	2.85		
5°FDB (Outdoor temp.) ^{*1}		Rated	2.75		
		Max.			
Indoor Power Factor		Cooling		%	99.2
		Heating			98.9
Energy Star ⁹					ES, ESCE, ESME

NOTES

- Cooling: Indoor temperature of 80°F (26.6°C)/67°FWB (19.44°CWB), and outdoor temperature of 95°FDB (35°CDB)/75°FWB (23.9°CWB).
- Heating: Indoor temperature of 70°FDB (21.11°CDB)/60°FWB (15.56°CWB), and outdoor temperature of 47°FDB (8.33°CDB)/43°FWB (6.11°CWB).
- 17°FDB (Outdoor temp.), —*1: Heating (17°F): Indoor temperature of 70°FDB (21.11°CDB)/60°FWB (15.56°CWB), and outdoor temperature of 17°FDB (-8.33°CDB)/15°FWB (-9.44°CWB).
- 5°FDB (Outdoor temp.), —*2: Heating (5°F): Indoor temperature of 70°FDB (21.11°CDB)/60°FWB (15.56°CWB), and outdoor temperature of 5°FDB (-15.0°CDB)/4°FWB (-15.56°CWB).
- Test conditions are based on AHR 210/240 2023.
- *4: Indoor Sound Pressure Level, —Measured values in manufacturer's anechoic chamber.
- Outdoor Sound Pressure Level, —Because of the surrounding sound environment, the sound levels measured in actual installation conditions might be higher than the specified values here.
- *3: Maximum Operating Current, —Maximum current is maximum value when operated within the operation range.
- The total current of indoor unit and outdoor unit.
- MCA—*5: Minimum Circuit Ampacity (Calculation based on UL60335-2-40)
- Wiring spec., —*6: Selected sample based on Japan Electrotechnical Standards and Codes Committee E0005.
- As the regulations of wire size and circuit breaker differ in each country or region, select appropriate devices complied to the regional standard.
- MAX. CKT. BKR^{*7}: Maximum Circuit Breaker
- Operation Range^{*8}: Suction temperature of the outdoor unit.
- *9: System continues to operate below rated outdoor operation temperature range, subject to varying conditions. System has no low temperature cut out. Capacity is not tested outside of the rated temperature range.

SUBMITTAL - 24KPAS1

ACCESSORIES:

Model Number	Description
UTY-RVRU ^{*1}	KAGAMI - Touch Panel Wired Controller
UTY-RNRUZ5 ^{*1}	Touch Panel Wired Remote Controller
UTY-RHRY ^{*1}	Simple Wired Remote (Without Mode Function) - Hospitality
UTY-RSRY ^{*1}	Simple Wired Remote (With Mode Function)
UTY-TWRXZ2	Communication Kit - Wall Mount
UTY-TFSXH4	Wi-Fi Adapter (WiFi Interface Module USB Type)
FJ-AC-WIFI-1	Intesis Wi-Fi Device: Wired Module
FJ-IR-WIFI-1NA	Intesis IR Wireless AC Cloud Control Interface (Intesis Home app)
BM101WA	Cielo - Breez Max IR Controller w/ WiFi (Black)
BM102WA	Cielo - Breez Max IR Controller w/ WiFi (White)
UTY-VMSX	Modbus Converter
UTY-VTGX ^{*1}	Network Converter - Convert H-Series Comm. Protocol to V/J-Series Comm.
FJ-AC-485-1	Intesis - BACnet MSTP & Modbus RTU Gateway
UTY-TERX ^{*1}	External Switch Controller
UTY-TTRXZ1 ^{*1, 2}	24V Thermostat Interface
TTRXZ1-KIT ^{*1, 2}	24V Thermostat Interface Kit (UTY-TTRXZ1, UTY-WIFI Plug & 24V Transformer)
UTY-XCSXZ2	External input and output PCB
UTY-XWZX	External Wire Kit
UTY-XWZXZ5	External Connect Kit
UTY-DSGYZ2 ^{*3}	Airstage Edge Controller
UTZ-DUHGG3A	Hail Guard
UTZ-DUSHG3A	Snowhood
UTZ-DUWBG3A	Wind Baffle

NOTES:

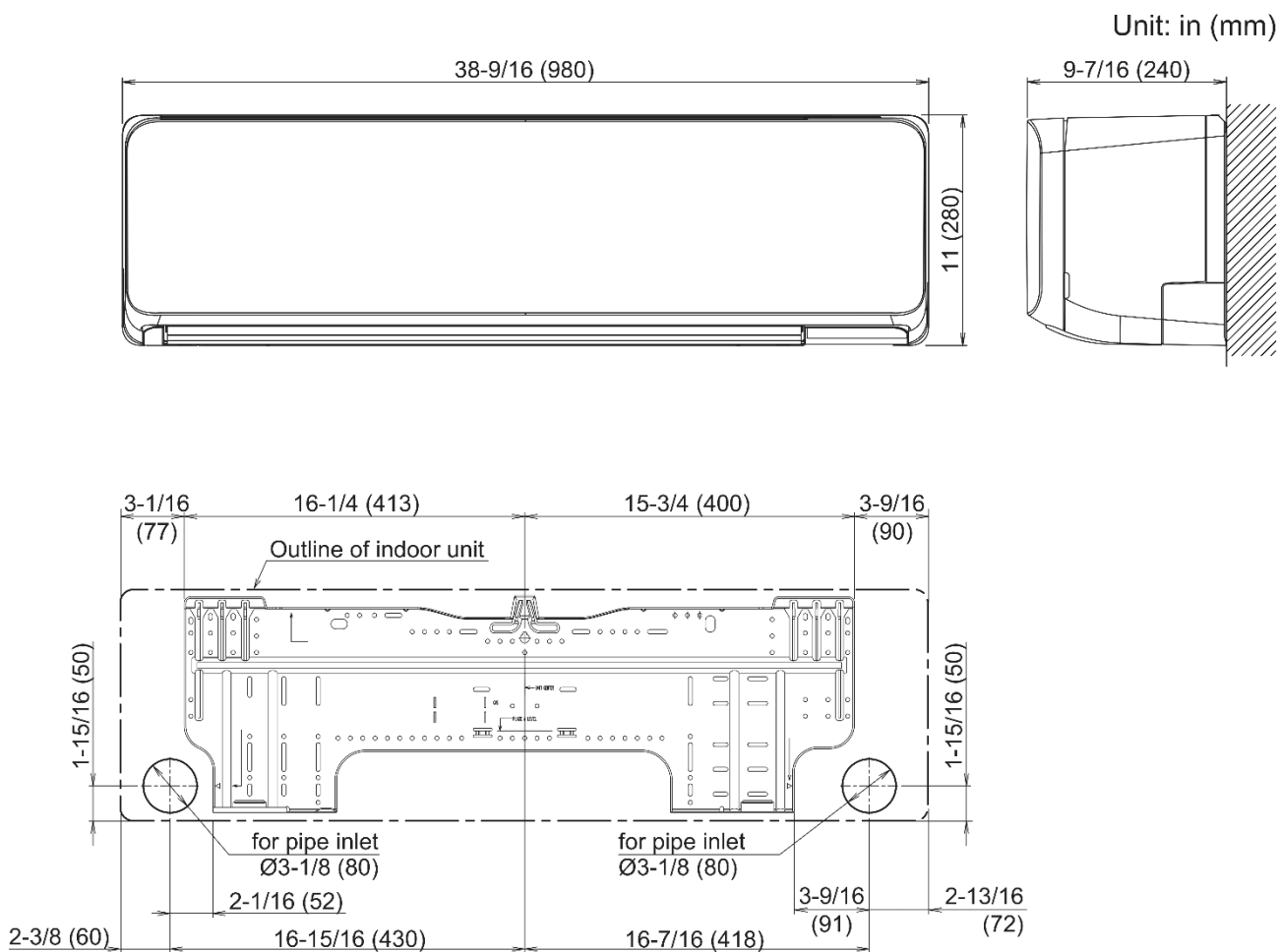
*1 -Requires Communication kit UTY-TWRXZ2 to connect this device to IDU.

*2 -This device may not be used with any other type of controls (central controller, wire/wireless RC, WiFi adapter, BMS interface).

*3 -Connection to AIRSTAGE Cloud requires a compatible AIRSTAGE Mobile adapter connected to the IDU.

SUBMITTAL - 24KPAS1

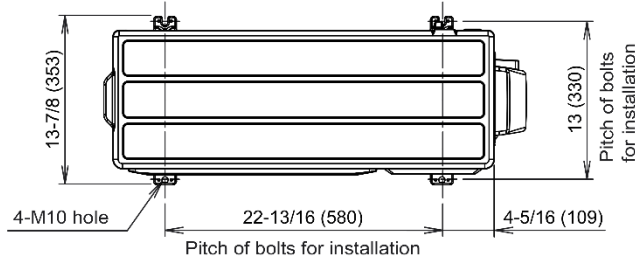
INDOOR UNIT DIMENSIONS:



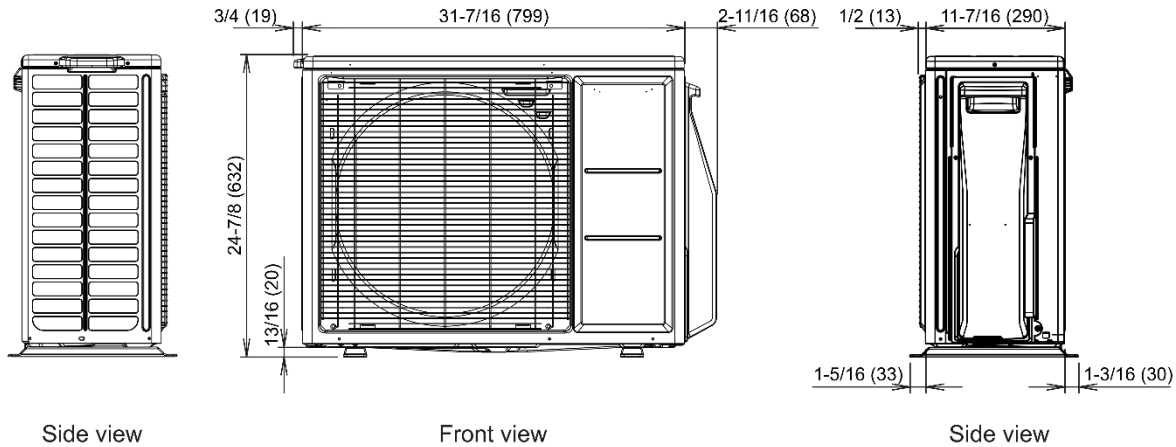
SUBMITTAL - 24KPAS1

OUTDOOR UNIT DIMENSIONS:

Unit: in (mm)



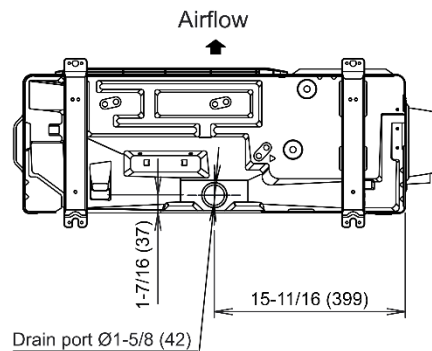
Top view



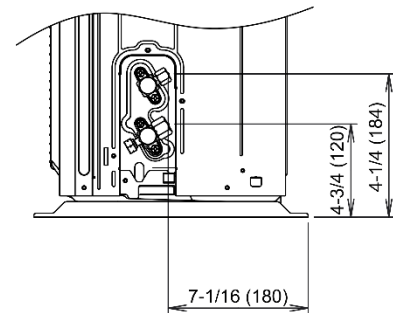
Side view

Front view

Side view



Bottom view



Side view (Valve part)