

SUBMITTAL - 48KUAS1U

Job Name: _____

Date: _____

Location: _____

R32

Indoor Unit: **AUUh48KUAS**

Outdoor Unit: **AOUH48KUAS1**



FEATURES

INDOOR UNIT:

- Circular-Flow cassette indoor unit delivering superior comfort and energy-efficient performance
- Indoor unit with ProCore™ (High Corrosion Resistant Copper) coils for long-lasting protection against corrosion
- Whisper-quiet operation with sound levels as low as 36dB
- Multiple fan speed options; Auto, High, Med, Low, and Quiet
- Special Operation modes available:
 - Economy Mode/ Energy Saving Mode / Powerful Mode / Minimum Heat Mode / Automatic defrosting operation / Auto-restart function
- Enhanced controls platform for seamless, intuitive operation:
 - Seamless control using the optional IR Receiver and Wireless Remote Controller kit
 - Optional Wi-Fi connectivity enables remote monitoring through the Airstage Mobile App
 - Extended connectivity with support for third-party interface options
 - Compatible with BACnet and Modbus protocols for seamless integration with Building Management and Home Automation Systems
- Advanced scheduling and timer options offer greater control over unit operation:
 - Weekly Timer / 24-hr Timer / Sleep Function
- Built-in drain pump for efficient water removal making installation and maintenance easier
- Optional fresh air kit, designed to boost indoor air quality and comfort
- Additional premium features include, but are not limited to:
 - Built-in external input and output for interlocking systems with 3rd party devices (Ex: Fire Alarm, Door Switch, Humidifier, Aux. Heat & more)
 - Multiple Auxiliary Heat logic for optimized heating performance
 - Service monitoring functionality via compatible accessories (UTY-RVRU & UTY-RNRUZ-series)
 - Optional human sensor detects room occupancy to enhance energy savings.
 - Offers group control, allowing seamless management of multiple units simultaneously.
 - Cassette Grille option available in sleek white and bold black colors to perfectly complement any space

OUTDOOR UNIT:

- Low GWP R-32 systems for reduced environmental impact
- INVERTER-driven compressor that offers superior performance, comfort, and energy savings
- Compact outdoor unit with extended line set lengths up to 246ft (75m)
- Blue Fin-coated heat exchanger for improved corrosion resistance and coil durability



7 Year Compressor, 5 Year Parts out-of-the-box Warranty.



10 Year Compressor, 10 Year Parts Warranty when registered within 60 days of installation in a residence.



12 Year Compressor, 12 Year Parts Warranty when registered within 60 days of installation in a residence and installed by a Fujitsu Elite contractor.



Due to continuous product improvements, specifications are subject to change without notice. Please log in to the Fujitsu Portal for the most up-to-date documentation <https://connect.fujitsugeneral.com>

Version: 20250106A

SUBMITTAL - 48KUAS1U

SPECIFICATIONS:

Indoor Unit					AUUH48KUAS	
Outdoor Unit					AOUH48KUAS1	
System Name					48KUAS1U	
AHRI Number					215812201	
SEER2		Cooling		Btu/hW	18.2	
EER2					10.1	
HSPF2		Heating		kW/kW	10.2	
COP2					3.46	
Outdoor Operation Range		Cooling		°F (°C)	-5 to 122*8 (-21 to 50*8)	
		Heating			-5 to 75 (-21 to 24)	
Indoor Capacity		Cooling		Rated Min.—Max.	Btu/h	46000
						Heating
		17°FDB (Outdoor temp.) ¹	Rated Max.	51000		
				5°FDB (Outdoor temp.) ²		
				43200		
				38500		
		Outdoor Connection pipe	Size	Liquid		in (mm)
Gas				Ø5/8 (Ø15.88)		
Method				FLARE		
Pre-charge length			ft (m)	98 (30)		
Min. length				16 (5)		
Max. length				246 (75)		
Max. height difference				98 (30)		
Indoor Dimensions (H × W × D)		Net		in (mm)	11-5/16 × 33-1/16 × 33-1/16 (288 × 840 × 840)	
		Gross			13-3/8 × 37-3/8 × 38-3/16 (340 × 950 × 970)	
Indoor Weight		Net		lb (kg)	64 (29)	
		Gross			73 (33)	
Outdoor Dimensions (H × W × D)		Net		in (mm)	39-5/16 × 37 × 12-5/8 (998 × 940 × 320)	
		Gross			46-5/16 × 40-7/16 × 17-1/2 (1,176 × 1,027 × 445)	
Outdoor Weight		Net		lb (kg)	157 (71)	
		Gross			176 (80)	
Indoor Fan	Airflow rate	Cooling	High	CFM (m³/h)	1,236 (2,100)	
			Med		1,048 (1,780)	
			Low		942 (1,600)	
			Quiet		765 (1,300)	
		Heating	High		1,236 (2,100)	
			Med		1,048 (1,780)	
			Low		942 (1,600)	
			Quiet		765 (1,300)	
	Type × Qty				TURBO FAN × 1	
	Motor output			W	81	
Outdoor Fan	Airflow rate	Cooling		CFM (m³/h)	2,619 (4,450)	
		Heating				
	Type × Qty			PROPELLER FAN × 1		
	Motor output			W	120	
Indoor Sound Pressure Level ⁴		Cooling	High	dB (A)	48	
			Med		44	
			Low		41	
			Quiet		36	
		Heating	High		48	
			Med		44	
			Low		41	
			Quiet		36	
Outdoor Sound Pressure Level ⁴		Cooling			57	
		Heating			59	

SUBMITTAL - 48KUAS1U

SPECIFICATIONS:

Outdoor Refrigerant		Type		R32	
		Charge	lb oz	5 lb 15 oz	
			g	2700	
Additional Charge Calculation			oz/ft	0.44	
			g/m	40	
Outdoor Refrigerant Oil		Type		RMM68AF	
		Amount	in ³ (cm ³)	70.2 (1,150)	
Indoor Moisture removal			pints/h (L/h)	10.6 (5.0)	
Indoor Drain hose		Material		POLYVINYL CHLORIDE	
		Tip Diameter		in (mm) Ø13/16 (Ø20.7) (I.D.), Ø1-1/16 (Ø26.6) (O.D.)	
Indoor Operation range		Cooling	°F (°C)	64 to 90 (18 to 32)	
			%RH	80 or less	
		Heating	°F (°C)	60 to 86 (16 to 30)	
Power Supply				208/230 V ~ 60 Hz	
Available Voltage Range				187—253	
System power supply		Voltage		V	
		Frequency		Hz	
		Available voltage range		V	
Indoor Current	Cooling		A	20	
	Heating			19	
Maximum Operating Current ^{*3}		Cooling		25	
		Heating			
Outdoor Starting Current				20	
MCA ^{*5}				25	
Wiring spec. ^{*6}		MAX. CKT. BKR ^{*7}		30	
Indoor Input Power	Cooling			Rated	4.55
			Min.—Max.	0.63—4.83	
	Heating	Rated	4.32		
		Min.—Max.	0.67—4.67		
		Rated	3.57		
		Max.			
		Rated			
	Max.	4.83			
Indoor Power Factor	Cooling		%	98.9	
	Heating				
Energy Star ^{*9}				ESCC, ESME	

NOTES:

- Cooling: Indoor temperature of 80°F (26.67°CDB)/67°FWB (19.44°CWB), and outdoor temperature of 95°FDB (35°CDB)/75°FWB (23.9°CWB).
- Heating: Indoor temperature of 70°FDB (21.11°CDB)/60°FWB (15.56°CWB), and outdoor temperature of 47°FDB (8.33°CDB)/43°FWB (6.11°CWB).
- 17°FDB (Outdoor temp.), – *1: Heating (17°F): Indoor temperature of 70°FDB (21.11°CDB)/60°FWB (15.56°CWB), and outdoor temperature of 17°FDB (-8.33°CDB)/15°FWB (-9.44°CWB).
- 5°FDB (Outdoor temp.) – *2: Heating (5°F): Indoor temperature of 70°FDB (21.11°CDB)/60°FWB (15.56°CWB), and outdoor temperature of 5°FDB (-15.0°CDB)/4°FWB (-15.56°CWB).
- Test conditions are based on AHRI 210/240 2023.

- *4: Indoor Sound Pressure Level, – Measured values in manufacturer's anechoic chamber.
- Outdoor Sound Pressure Level – Because of the surrounding sound environment, the sound levels measured in actual installation conditions might be higher than the specified values here.
- *3:

- Maximum Operating Current – Maximum current is maximum value when operated within the operation range.
- The total current of indoor unit and outdoor unit.

MCA – *5: Minimum Circuit Ampacity (Calculation based on UL60335-2-40)

Wiring spec. – *6: Selected sample based on Japan Electrotechnical Standards and Codes Committee E0005.

As the regulations of wire size and circuit breaker differ in each country or region, select appropriate devices complied to the regional standard.

MAX. CKT. BKR – *7: Maximum Circuit Breaker

Operation Range – *8: Suction temperature of the outdoor unit.

Energy Star – *9: ES = Energy Star, ESCC = Energy Star Cold Climate, ESME= Energy Star Most Efficient.

System continues to operate below rated outdoor operation temperature range, subject to varying conditions. System has no low temperature cut out. Capacity is not tested outside of the rated temperature range.

SUBMITTAL - 48KUAS1U

ACCESSORIES:

Model Number	Description
UTY-RVRU	KAGAMI - Touch Panel Wired Controller
UTY-RNRUZ5	Touch Panel Wired Remote Controller
UTY-RHRY	Simple Wired Remote (Without Mode Function) - Hospitality
UTY-RSRY	Simple Wired Remote (With Mode Function)
UTY-LBTUC	IR Receiver Kit w/ Wireless Remote Controller (Circular Flow Cassettes)
UTY-TFSXJ4	Wi-Fi adapter (WiFi Interface Module UART Type)
FJ-AC-WIFI-1	Intesis Wi-Fi Device: Wired Module
FJ-IR-WIFI-1NA ^{*1}	Intesis IR Wireless AC Cloud Control Interface (Intesis Home app)
BM101WA ^{*1}	Cielo - Breez Max IR Controller w/ WiFi (Black)
BM102WA ^{*1}	Cielo - Breez Max IR Controller w/ WiFi (White)
UTY-VMSX	Modbus Converter
UTY-VTGX	Network Converter - Convert H-Series Comm. Protocol to V/J-Series Comm.
FJ-AC-485-1	Intesis - BACnet MSTP & Modbus RTU Gateway
UTY-TERX	External Switch Controller
UTY-TTRXZ1 ^{*2}	24V Thermostat Interface
TTRXZ1-KIT ^{*2}	24V Thermostat Interface Kit (UTY-TTRXZ1, UTY-WIFI Plug & 24V Transformer)
UTY-SHZXC	Human Sensor Kit
UTY-XCSX	External input and output PCB
UTY-XWZXZG	External Connect Kit
UTZ-GXRA	External input and output PCB box
UTZ-KXRA	High Humidity Insulation Kit
UTZ-VXRA	Fresh Air Intake Kit
UTR-YDZK	Air outlet shutter plate
UTD-LFNB	Long Life Filter (18/24/30k units)
UTD-LFNC	Long Life Filter (12k units)
UTY-DSGYZ2 ^{*3}	Airstage Edge Controller
UTG-LCGVCW	Cassette Grille (White)
UTG-LCGVCB	Cassette Grille (Black)

NOTES:

*1 -Requires IR receiver kit UTY-LBTUC to connect this device to IDU.

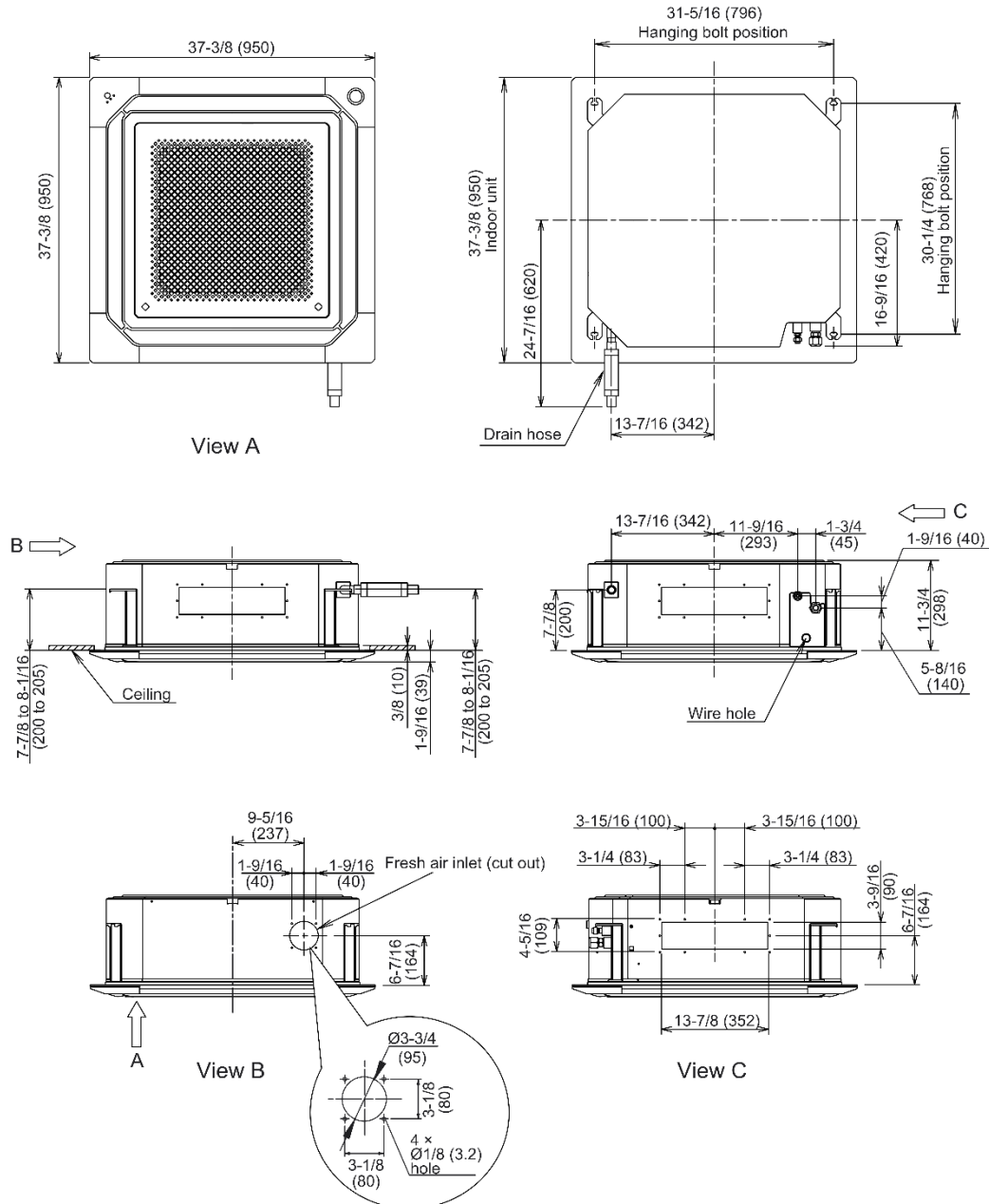
*2 -This device may not be used with any other type of controls (central controller, wire/wireless RC, WiFi adapter, BMS interface).

*3 -Connection to AIRSTAGE Cloud requires a compatible AIRSTAGE Mobile adapter connected to the IDU.

SUBMITTAL - 48KUAS1U

INDOOR UNIT DIMENSIONS:

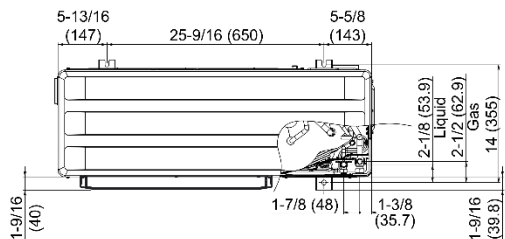
Unit: in (mm)



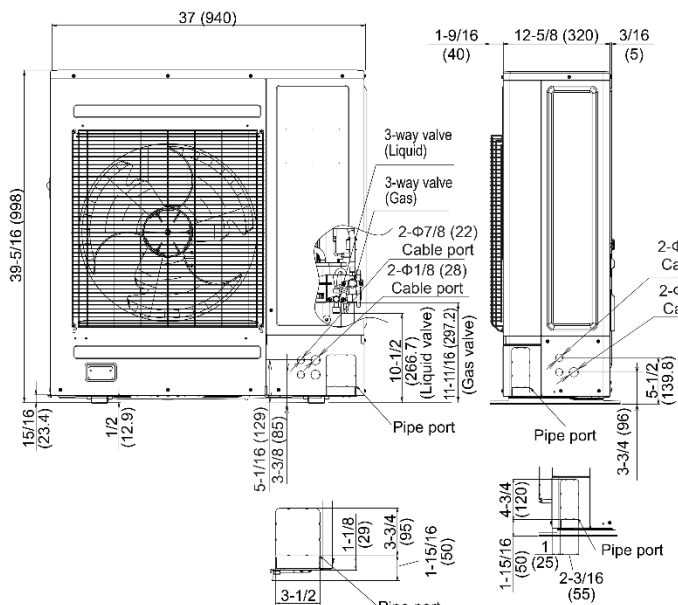
SUBMITTAL - 48KUAS1U

OUTDOOR UNIT DIMENSIONS:

Unit: in (mm)

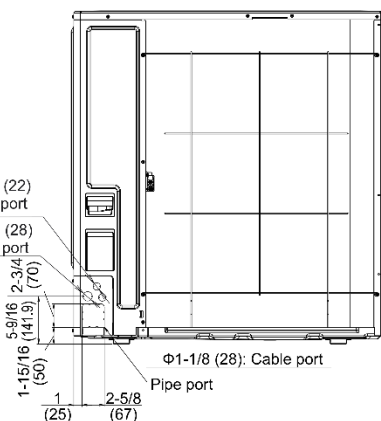


Top view

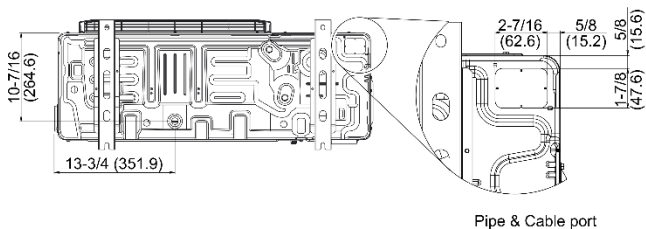


Front view

Side view



Rear view



Bottom view

Pipe & Cable port