

## SUBMITTAL - 18KZAH1

Job Name: \_\_\_\_\_

Date: \_\_\_\_\_

Location: \_\_\_\_\_

**R32**

Indoor Unit: **ASUH18KZAS**

Outdoor Unit: **AOUH18KZAH1**



**XLTH**

### FEATURES

#### INDOOR UNIT:

- Compact wall-mounted indoor unit providing superior comfort.
- Indoor unit with ProCore™ (High Corrosion Resistant Copper) coils for long-lasting protection against corrosion
- Whisper-quiet operation with sound levels as low as 30dB
- Multiple fan speed options: Auto, High, Med-High, Med, Med-Low, Low, and Quiet.
- Special Operation modes available:
  - Economy Mode / Energy Saving Mode / Powerful Mode / Minimum Heat Mode / Automatic defrosting operation / Auto-restart function
- Enhanced controls platform for seamless, intuitive operation:
  - Backlit wireless remote controller included with the indoor unit
  - Built-in Wi-Fi connectivity for remote monitoring & control via the Airstage Mobile App
  - Occupancy sensor for enhanced energy savings
  - Extended connectivity with support for third-party interface options
  - Compatible with BACnet and Modbus protocols for seamless integration with building management and Home Automation Systems
- Advanced scheduling and timer options offer greater control over unit operation:
  - Weekly Timer / 24-hr Timer / Sleep Function
- Dual-action Filtration: Apple-Catechin Filter & Ion Deodorizing Filter
- Additional premium features include, but are not limited to:
  - Built-in external input and output for interlocking systems with 3<sup>rd</sup> party devices (Ex: Fire Alarm, Door Switch, Humidifier, Aux. Heat & more)
  - Multiple Auxiliary Heat logic for optimized heating performance
  - Service monitoring functionality via compatible accessories (UTY-RVRU & UTY-RNRUZ-series)

#### OUTDOOR UNIT:

- Low GWP R-32 systems for reduced environmental impact
- INVERTER-driven compressor that offers superior performance, comfort, and energy savings
- Base pan heater designed for the extreme cold climate region
- Compact outdoor unit with extended line set lengths up to 98ft (30m)
- Up to 20% higher rated heating capacity than nominal capacity
  - 21600 Btu/h Rated Heating Capacity for 18000 Btu/h system
  - Up to 27% higher heating capacity @ -5°F
- Low-noise outdoor unit operation mode
- Hydro Fin-coated heat exchanger for improved corrosion resistance and coil durability



7 Year Compressor, 5 Year Parts out-of-the-box Warranty.



10 Year Compressor, 10 Year Parts Warranty when registered within 60 days of installation in a residence.



12 Year Compressor, 12 Year Parts Warranty when registered within 60 days of installation in a residence and installed by a Fujitsu Elite contractor.



Due to continuous product improvements, specifications are subject to change without notice. Please log in to the Fujitsu Portal for the most up-to-date documentation <https://connect.fujitsugeneral.com>

Version: 20250116A

-1 of 6-

# SUBMITTAL - 18KZAH1

## SPECIFICATIONS:

Indoor Unit					ASUH18KZAS				
Outdoor Unit					AOUH18KZAH1				
System Name					18KZAH1				
AHRI Number					215647921				
SEER2		Cooling		Btu/hW	25.5				
EER2					14				
HSPF2					12.5				
COP2		Heating		kW/kW	4.36				
Outdoor Operation Range		Cooling		°F (°C)	14 to 122 (-10 to 50)				
		Heating			-15 to 75 (-26 to 24)				
Indoor Capacity		Cooling		Rated	Btu/h	18000			
				Min.—Max.		7,000—26,200			
		Heating	47°FDB (Outdoor temp.)	Rated		21600			
				Min.—Max.		8,000—31,800			
			17°FDB (Outdoor temp.) <sup>1</sup>	Rated		13600			
						Max.	27200		
				5°FDB (Outdoor temp.) <sup>2</sup>		Rated	24800		
							Max.	25400	
Outdoor Connection pipe	Size	Liquid		in (mm)	Ø3/8 (Ø9.52)				
		Gas			Ø5/8 (Ø15.88)				
	Method				FLARE				
	Pre-charge length			ft (m)	66 (20)				
	Min. length				16 (5)				
	Max. length				164 (50)				
	Max. height difference				98 (30)				
Indoor Dimensions (H × W × D)		Net		in (mm)	13-3/8 × 45-1/4 × 11 (340 × 1,150 × 280)				
		Gross			15-15/16 × 50 × 17-11/16 (405 × 1,270 × 450)				
Indoor Weight		Net		lb (kg)	36 (16.5)				
		Gross			49 (22.0)				
Outdoor Dimensions (H × W × D)		Net		in (mm)	31 × 37 × 12-5/8 (788 × 940 × 320)				
		Gross			38-1/16 × 40-7/16 × 17-1/2 (966 × 1,027 × 445)				
Outdoor Weight		Net		lb (kg)	117 (53)				
		Gross			134 (61)				
Indoor Fan	Airflow rate	Cooling	High	CFM (m³/h)	624 (1,060)				
			Med—High		571 (970)				
			Med		518 (880)				
			Med—Low		471 (800)				
			Low		430 (730)				
			Quiet		371 (630)				
		Heating	High		677 (1,150)				
			Med—High		583 (990)				
			Med		518 (880)				
			Med—Low		471 (800)				
			Low		430 (730)				
			Quiet		371 (630)				
		Type × Qty				CROSSFLOW FAN × 1			
		Outdoor Fan	Airflow rate		Cooling		CFM (m³/h)	78	
					Heating			1,666 (2,830)	
			Type × Qty				1,725 (2,930)		
	Motor output			W	PROPELLER FAN × 1				
Indoor Sound Pressure Level <sup>14</sup>		Cooling	High	dB (A)	100				
			Med—High		44				
			Med		42				
			Med—Low		39				
			Low		36				
			Quiet		33				
		Heating	High		30				
			Med—High		46				
			Med		42				
			Med—Low		38				
			Low		36				
			Quiet		34				
Outdoor Sound Pressure Level <sup>14</sup>	Cooling				30				
	Heating				47				
						50			

## SUBMITTAL - 18KZAH1

### SPECIFICATIONS:

Outdoor Refrigerant		Type		R32	
		Charge	lb oz	3 lb 12 oz	
g	1700				
Additional Charge Calculation			oz/ft	0.43	
			g/m	40	
Outdoor Refrigerant Oil		Type		RMM68AF	
		Amount	in³ (cm³)	48.8 (800)	
Indoor Moisture removal			pints/h (L/h)	7.6 (3.6)	
Indoor Drain hose		Material		POLYPROPYLENE + HIGH-DENSITY POLYETHYLENE	
		Tip Diameter	in (mm)	Ø17/32 (Ø13.8) (I.D.), Ø19/32 to 21/32 (Ø15.0 to 16.8) (O.D.)	
Indoor Operation range		Cooling	°F (°C)	64 to 90 (18 to 32)	
			%RH	80 or less	
		Heating	°F (°C)	86 or less (30 or less)	
Power Supply				208/230 V~ 60 Hz	
Available Voltage Range				187—253	
System power supply		Voltage		V	
		Frequency		Hz	
		Available voltage range		V	
Indoor Current	Cooling		A	5.9	
	Heating			6.5	
Maximum Operating Current* <sup>3</sup>		Cooling		15.4	
		Heating		15.9	
Outdoor Starting Current				6.5	
MCA* <sup>5</sup>				19.4	
Wiring spec.* <sup>6</sup>		MAX. CKT. BKR* <sup>7</sup>		20	
Indoor Input Power	Cooling			Rated	1.29
			Min.—Max.	0.40—2.45	
	Heating	Rated	1.45		
		Min.—Max.	0.43—2.90		
		Rated	1.2		
		Max.	3.47		
5°FDB (Outdoor temp.)* <sup>1</sup>	Rated	3.5			
	Max.	3.69			
Indoor Power Factor		Cooling		95.1	
		Heating		97	
Energy Star				ES, ESCC, ESME	

NOTES:

- Cooling: Indoor temperature of 80°F (26.67°CDB)/67°F WB (19.44°CWB), and outdoor temperature of 95°F DB (35°CDB)/75°F WB (23.9°CWB).
- Heating: Indoor temperature of 70°F DB (21.11°CDB)/60°F WB (15.56°CWB), and outdoor temperature of 47°F DB (8.33°CDB)/43°F WB (6.11°CWB).
- \*1: Heating (17°F): Indoor temperature of 70°F DB (21.11°CDB)/60°F WB (15.56°CWB), and outdoor temperature of 17°F DB (–8.33°CDB)/15°F WB (–9.44°CWB).
- \*2: Heating (5°F): Indoor temperature of 70°F DB (21.11°CDB)/60°F WB (15.56°CWB), and outdoor temperature of 5°F DB (–15.0°CDB)/4°F WB (–15.56°CWB).
- Test conditions are based on AHRI 210/240 2023.
- \*4: Indoor Sound Pressure Level
- Measured values in manufacturer's anechoic chamber.
- \*5: Outdoor Sound Pressure Level
- Because of the surrounding sound environment, the sound levels measured in actual installation conditions might be higher than the specified values here.
- \*3: Maximum Operating Current
- Maximum current is maximum value when operated within the operation range.
- The total current of indoor unit and outdoor unit.
- MCA – \*5: Minimum Circuit Ampacity (Calculation based on UL60335-2-40)
- Wiring spec. – \*6: Selected sample based on Japan Electrotechnical Standards and Codes Committee E0005.
- As the regulations of wire size and circuit breaker differ in each country or region, select appropriate devices complied to the regional standard.
- MAX. CKT. BKR – \*7: Maximum Circuit Breaker

System continues to operate below rated outdoor operation temperature range, subject to varying conditions. System has no low temperature cut out. Capacity is not tested outside of the rated temperature range.

## SUBMITTAL - 18KZAH1

### ACCESSORIES:

Model Number	Description
UTY-RVRU <sup>*1</sup>	KAGAMI - Touch Panel Wired Controller
UTY-RNRUZ5 <sup>*1</sup>	Touch Panel Wired Remote Controller
UTY-RHRY <sup>*1</sup>	Simple Wired Remote (Without Mode Function) - Hospitality
UTY-RSRY <sup>*1</sup>	Simple Wired Remote (With Mode Function)
UTY-TWRXZ2	Communication Kit - Wall Mount
FJ-AC-WIFI-1	Intesis Wi-Fi Device: Wired Module
FJ-IR-WIFI-1NA	Intesis IR Wireless AC Cloud Control Interface (Intesis Home app)
BM101WA	Cielo Breez MAX IR Controller w/ WiFi (Black)
BM102WA	Cielo Breez MAX IR Controller w/ WiFi (White)
UTY-VMSX	Modbus Converter
UTY-VTGX <sup>*1</sup>	Network Converter - Convert H-Series Comm. Protocol to V/J-Series Comm.
FJ-AC-485-1	Intesis - BACnet MSTP & Modbus RTU Gateway
UTY-TERX <sup>*1</sup>	External Switch Controller
UTY-TTRXZ1 <sup>*1, 2</sup>	24V Thermostat Interface
TTRXZ1-KIT <sup>*1, 2</sup>	24V Thermostat Interface Kit (UTY-TTRXZ1, UTY-WiFi Plug & 24V Transformer)
UTY-XCSXZ2	External input and output PCB
UTY-XWZX	External Wire Kit
UTY-XWZXZ5	External Connect Kit
UTY-DSGYZ2 <sup>*3</sup>	Airstage Edge Controller

NOTES:

\*1 -Requires Communication kit UTY-TWRXZ2 to connect this device to IDU.

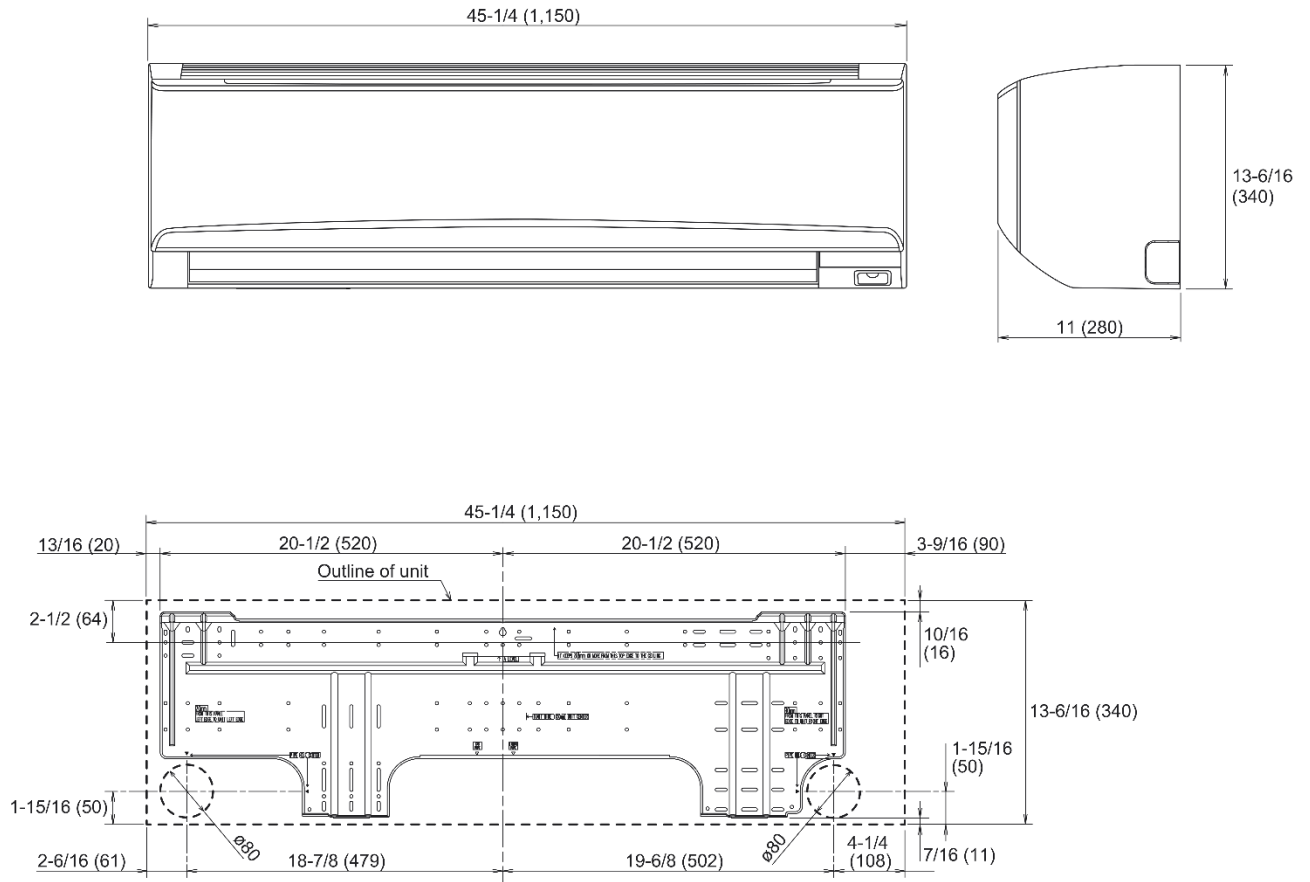
\*2 -This device may not be used with any other type of controls (central controller, wire/wireless RC, WiFi adapter, BMS interface).

\*3 -Connection to AIRSTAGE Cloud requires a compatible AIRSTAGE Mobile adapter connected to the IDU.

# SUBMITTAL - 18KZA1

## INDOOR UNIT DIMENSIONS:

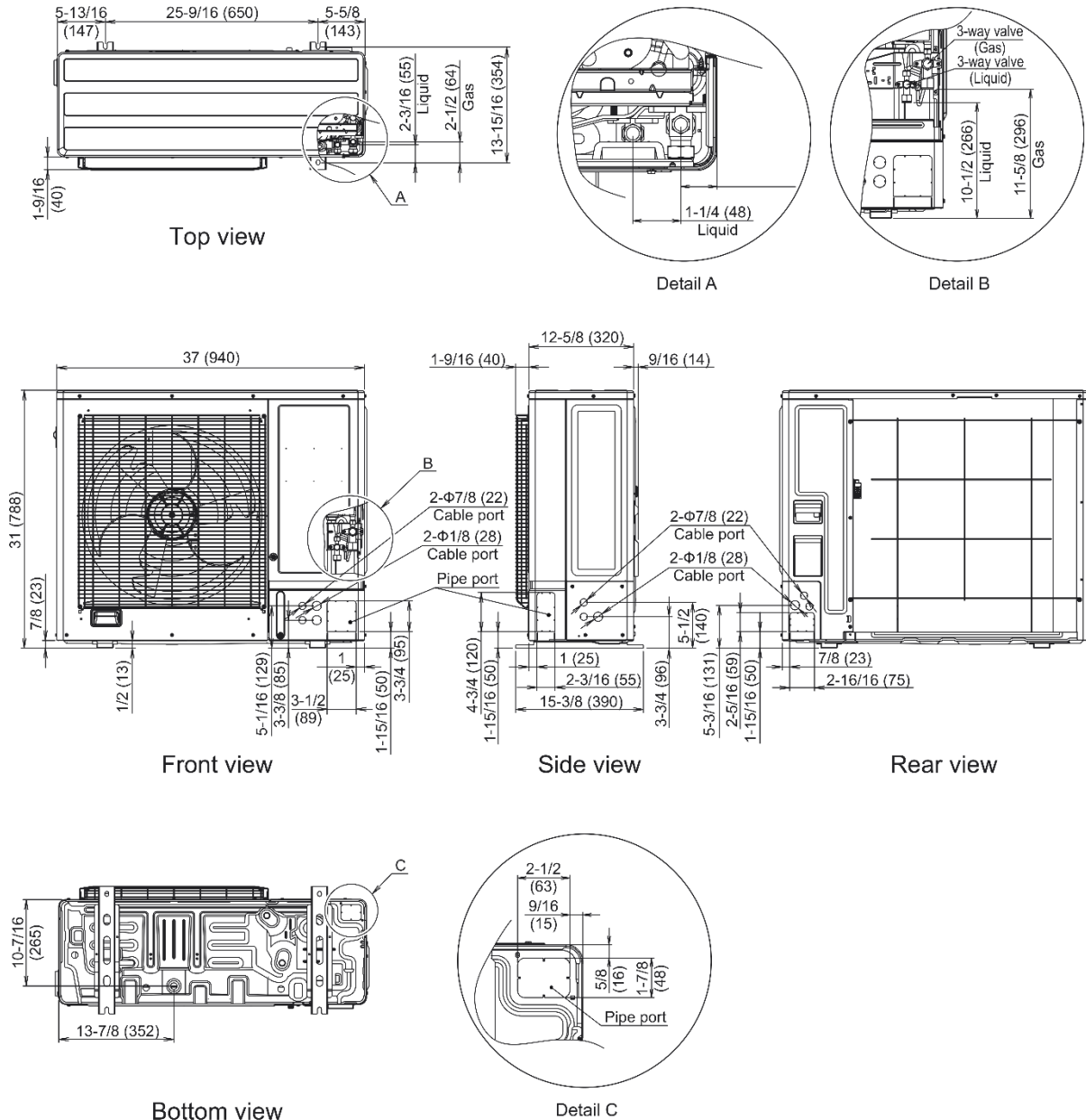
Unit: in (mm)



# SUBMITTAL - 18KZA1

## OUTDOOR UNIT DIMENSIONS:

Unit: in (mm)



The Fujitsu logo is a worldwide trademark of Fujitsu General Limited. The Airstage logo and name is a worldwide trademark of Fujitsu General Limited and is a registered trademark in Japan, the USA and other countries or areas. Copyright 2024 Fujitsu General America, Inc. Fujitsu's products are subject to continuous improvements. Fujitsu reserves the right to modify product design, specifications and information in this brochure without notice and without incurring any obligations.