

## Inverter Driven Heat Pump

30,000 BTU Single Zone Circular Flow Cassette

Job Name \_\_\_\_\_  
Location \_\_\_\_\_  
Engineer \_\_\_\_\_  
Submitted To \_\_\_\_\_  
Submitted By \_\_\_\_\_  
Reference \_\_\_\_\_

Date \_\_\_\_\_  
Approval \_\_\_\_\_  
Construction \_\_\_\_\_  
Unit No \_\_\_\_\_  
Drawing No \_\_\_\_\_

## PRODUCT FEATURES

- 360° Circular flow distributes air more evenly around the room
- Seamless Airflow Louver
- Optional human sensor detects room occupancy for energy savings
- Quiet Operation (as low as 33 db)
- Lineset Length up to 164ft
- Grille available in White (UTG-GCGF) or Black (UTG-LCGVCB), sold separately



## MODEL NUMBERS

Indoor Unit	AUUH30LUAS
Outdoor Unit	AOUH30LUAS1
System	30LUAS1U

## EFFICIENCIES

SEER			--
SEER 2			21.5
EER			--
EER 2			11.7
HSPF			--
HSPF 2 (IV) / HSPF 2 (V)			10.6/8.7
COP	kW/kW		--
COP	Btu/hW		--
COP2	kW/kW		3.98
COP2	Btu/hW		13.6

## OUTDOOR TEMPERATURE OPERATION RANGE

Cooling	*F(°C)	-5 to 115 (-21 to 46)
Heating*		*-5 to 75 (-21 to 24)

## CAPACITIES

Cooling	Rated	Btu/h	30000
	Min.—Max.		9,600—35,000
Heating	Rated	Btu/h	32000
	Min.—Max.		9,200—38,000

## LINESET REQUIREMENTS

Connection Method		Flare
Liquid	in (mm)	Ø3/8 (Ø9.52)
Gas		Ø5/8 (Ø15.88)
Pre-charge length	ft (m)	66 (20)
Minimum Length		16 (5)
Max. length		164 (50)
Max. height difference		98 (30)

## INDOOR DIMENSIONS &amp; WEIGHT

Net (H x W x D)	in (mm)	11-5/16 x 33-1/16 x 33-1/16 (288 x 840 x 840)
Gross (H x W x D)		13-3/8 x 37-3/8 x 38-3/16 (340 x 950 x 970)
Net Weight	lb (kg)	57 (26)
Gross Weight		68 (31)

## OUTDOOR DIMENSIONS &amp; WEIGHT

Net (H x W x D)	in (mm)	39-5/16 x 37 x 12-5/8 (998 x 940 x 320)
Gross (H x W x D)		46-5/16 x 40-7/16 x 17-1/2 (1,176 x 1,027 x 445)
Net Weight	lb (kg)	139 (63)
Gross Weight		159 (72)

\* System continues to operate below rated outdoor operation temperature range, subject to varying conditions. System has no low temperature cut out. Capacity is not tested outside of the rated temperature range.

## Warranty Information



7 Year Compressor, 5 Year Parts out-of-the-box Warranty



10 Year Compressor, 10 Year Parts Warranty when registered within 60 days of installation in a residence



12 Year Compressor, 12 Year Parts Warranty when registered within 60 days of installation in a residence, and installed by a Fujitsu Elite contractor

## ACCESSORIES

UTY-RNRUZ-Series	Wired Remote Controller
UTY-RSRY	Simple Remote Controller
UTY-RHRY	Simple Remote Controller
UTY-LBTUC	IR Receiver Kit with Wireless Remote Controller
UTG-GCGF	Cassette Grille
UTG-LCGVCB	Cassette Grille
UTY-TFSXJ4	WLAN Adapter
UTY-VMSX	Modbus Converter
UTY-VKSX	KNX Converter
UTY-TTRXZ1	Thermostat Converter
UTY-VTGX	Network Converter
UTY-TERX	External Switch Controller
UTY-SHZXC	Human Sensor Kit
UTY-XWZXZG	External Connect Kit
UTR-YDZK	Air Outlet Shutter Plate
UTG-AKXA-W	Wide Panel
UTG-BKXA-W	Panel Spacer
UTZ-VXRA	Fresh Air Intake Kit
UTZ-KXRA	Insulation Kit for High Humidity
UTY-XCSX	External Input and Output PCB
UTZ-GXRA	External Input and Output PCB Box

Due to continuous product improvements, specifications are subject to change without notice. Please log in to the Fujitsu Portal for the most up-to-date documentation  
<https://connect.fujitsugeneral.com>

Effective Date: 5/7/2024

Fujitsu General America, Inc. • 342 Changebridge Rd, Pine Brook, NJ 07058 • Toll Free: (888) 888-3424 • [www.fujitsugeneral.com](http://www.fujitsugeneral.com)

## Inverter Driven Heat Pump

## 30,000 BTU Single Zone Circular Flow Cassette

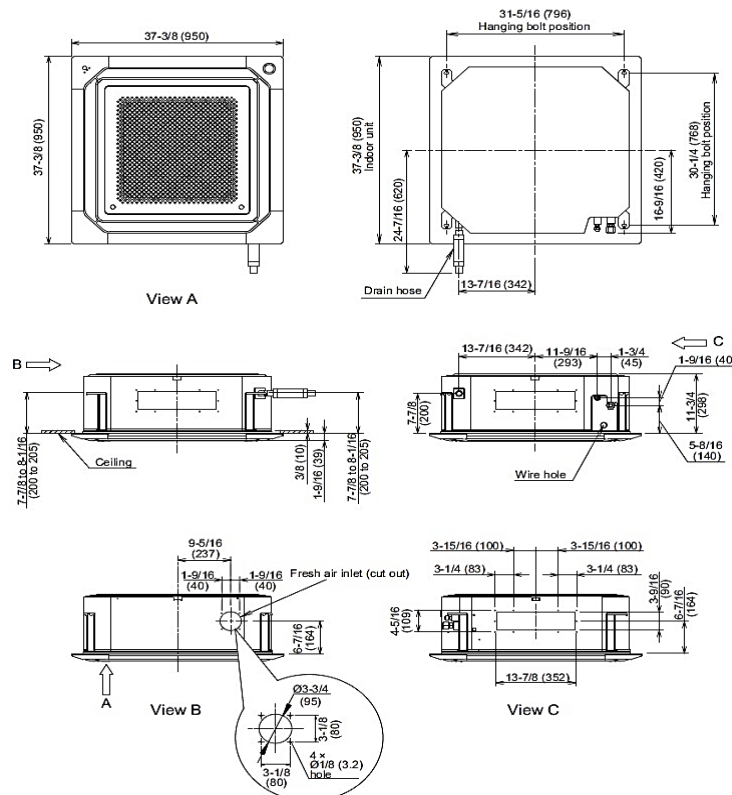
FAN DATA				
Indoor Unit Airflow rate	Cooling	HIGH	CFM (m3/h)	942 (1,600)
		MED		848 (1,440)
		LOW		771 (1,310)
		QUIET		677 (1,150)
	Heating	HIGH		942 (1,600)
		MED		848 (1,440)
		LOW		771 (1,310)
		QUIET		677 (1,150)
Outdoor Unit Airflow rate	Cooling			2,301 (3,910)
	Heating			2,219 (3,770)
SOUND PRESSURE				
Indoor Unit	Cooling	HIGH	dB (A)	40
		MED		38
		LOW		36
		QUIET		33
	Heating	HIGH		40
		MED		38
		LOW		36
		QUIET		33
Outdoor Unit	Cooling			53
	Heating			55
REFRIGERANT				
Type				R410A
Charge	lb oz			5 lb 8 oz
	g			2500
Oil Type				POE (RB68)

ELECTRICAL SPECIFICATIONS				
Voltage/Frequency/Phase		208/230 V~ 60 Hz		
Available Voltage Range		187–253 V		
Current	Cooling	Rated	A	11.3
	Heating	Rated		10.4
Maximum Operating Current		Cooling		18.3
		Heating		18.3
Starting current				13.4
MCA				22.2
Maximum Circuit Breaker				25
Input Power	Cooling	Rated	kW	2.56
		Min.–Max.		0.38–3.69
	Heating	Rated		2.36
		Min.–Max.		0.59–3.61
Power Factor	Cooling		%	98.5
	Heating			98.7
OTHER				
Moisture Removal		pints/h (L/h)	6.3 (3.0)	
Energy Star			No	
Drain hose	Material		PVC	
	Tip diameter	in (mm)	Ø1/2 (Ø13.0) (I.D.) Ø5/8 to Ø11/16 (Ø16.0 to Ø16.7)	
Operation Range	Cooling	°F (°C)	64 to 90 (18 to 32)	
		%RH	80 or less	
	Heating	°F (°C)	60 to 86 (16 to 30)	

## DIMENSIONS:

Indoor Unit

Units: In. (mm)



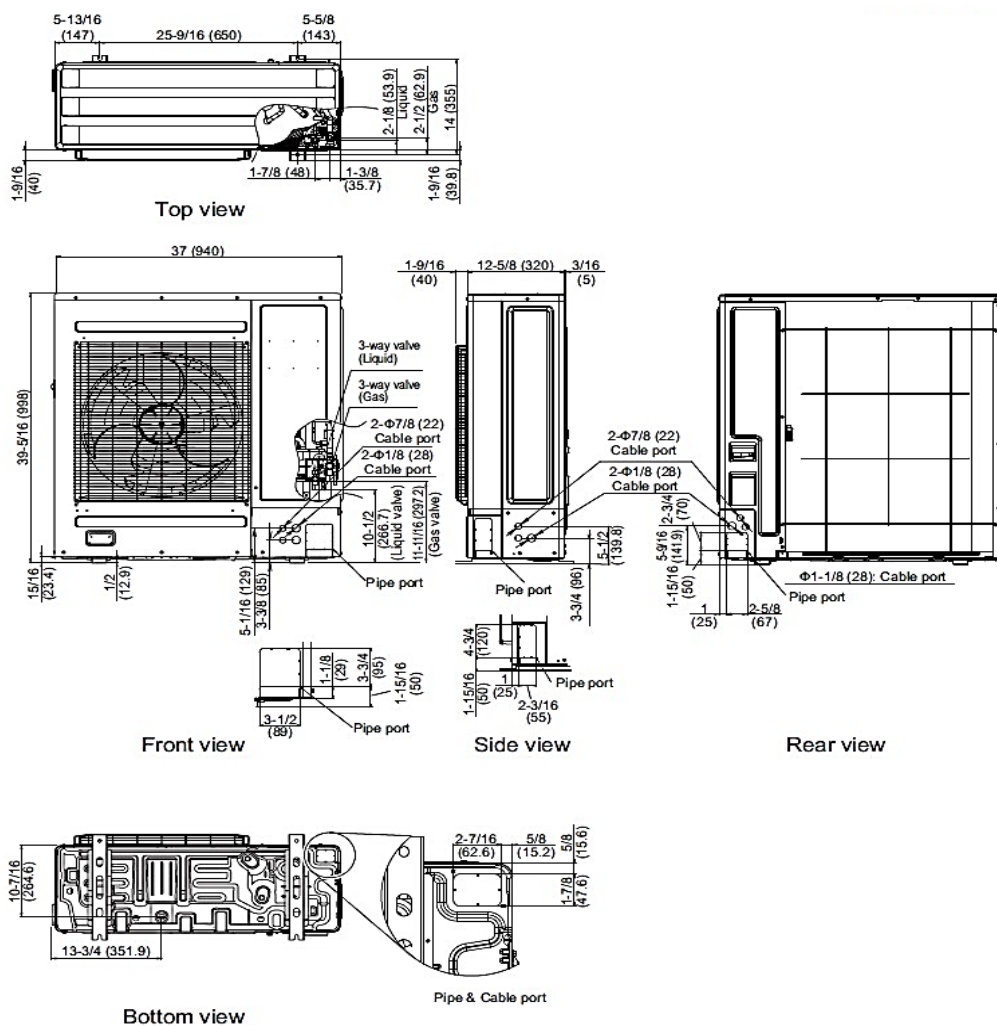
## Inverter Driven Heat Pump

## 30,000 BTU Single Zone Circular Flow Cassette

## DIMENSIONS

Units: In. (mm)

## Outdoor Unit



The Fujitsu logo is a worldwide trademark of Fujitsu General Limited. The Airstage logo and name is a worldwide trademark of Fujitsu General Limited and is a registered trademark in Japan, the USA and other countries or areas. Copyright 2024 Fujitsu General America, Inc. Fujitsu's products are subject to continuous improvements. Fujitsu reserves the right to modify product design, specifications and information in this brochure without notice and without incurring any obligations.

Note: Specifications are based on the following conditions:  
Cooling: Indoor temperature of 80°F (26.7°C) DB/67°F (19.4°C) WB, and outdoor temperature of 95°F (35°C) DB/75°F (23.9°C) WB. Heating: Indoor temperature of 70°F (21.1°C) DB/60°F (15.6°C) WB, and outdoor temperature of 47°F (8.3°C) DB/43°F (6.1°C) WB. Pipe length: 25ft. (7.5m), Height difference: 0ft. (0m) (Outdoor unit – indoor unit).