

Inverter Driven Heat Pump

30,000 BTU Single Zone Mid Static Duct System

Job Name _____
 Location _____
 Engineer _____
 Submitted To _____
 Submitted By _____
 Reference _____

Date _____
 Approval _____
 Construction _____
 Unit No _____
 Drawing No _____

PRODUCT FEATURES

- Up To 0.8" WC
- Quiet Operation (as low as 29 db)
- Automatic Static Pressure Detection
- Heating Operation Rated Down to -5 °F
- Built-in Drain Pump
- Lineset Length up to 164ft
- Controls Sold Separately



MODEL NUMBERS			
Indoor Unit		ARUH30LUAS	
Outdoor Unit		AOUH30LUAS1	
System		30LUAS1R	
EFFICIENCIES			
SEER		--	
SEER 2		18.5	
EER		--	
EER 2		10.4	
HSPF		--	
HSPF 2 (IV) / HSPF 2 (V)		10/8.1	
COP	kW/kW		--
COP	Btu/hW		--
COP2	kW/kW		3.74
COP2	Btu/hW		12.8
OUTDOOR TEMPERATURE OPERATION RANGE			
Cooling	*F(°C)	-5 to 115 (-21 to 46)	
Heating*		*5 to 75 (-21 to 24)	
CAPACITIES			
Cooling	Rated	Btu/h	30000
	Min.—Max.		9,600—35,000
Heating	Rated		32000
	Min.—Max.		9,200—38,000
LINESET REQUIREMENTS			
Connection Method		Flare	
Liquid	in (mm)		Ø3/8 (Ø9.52)
Gas			Ø5/8 (Ø15.88)
Pre-charge length	ft (m)		66 (20)
Minimum Length			16 (5)
Max. length			164 (50)
Max. height difference			98 (30)
INDOOR DIMENSIONS & WEIGHT			
Net (H × W × D)	in (mm)	11-13/16 × 39-3/8 × 27-9/16 (300 × 1,000 × 700)	
Gross (H × W × D)		15-3/4 × 48-3/4 × 34-7/16 (400 × 1,238 × 875)	
Net Weight	lb (kg)	93 (42)	
Gross Weight		110 (50)	
OUTDOOR DIMENSIONS & WEIGHT			
Net (H × W × D)	in (mm)	39-5/16 × 37 × 12-5/8 (998 × 940 × 320)	
Gross (H × W × D)		46-5/16 × 40-7/16 × 17-1/2 (1,176 × 1,027 × 445)	
Net Weight	lb (kg)	139 (63)	
Gross Weight		159 (72)	

* System continues to operate below rated outdoor operation temperature range, subject to varying conditions. System has no low temperature cut out. Capacity is not tested outside of the rated temperature range.

Warranty Information



7 Year Compressor, 5 Year Parts out-of-the-box Warranty



10 Year Compressor, 10 Year Parts Warranty when registered within 60 days of installation in a residence



12 Year Compressor, 12 Year Parts Warranty when registered within 60 days of installation in a residence, and installed by a Fujitsu Elite contractor

ACCESSORIES

UTY-RNRUZ- Series	Wired Remote Controller
UTY-RSRY	Simple Remote Controller
UTY-RHRY	Simple Remote Controller
UTY-LBTUM	IR Receiver Kit with Wireless Remote Controller
UTY-XSZXZ1	Remote Sensor Unit
UTD-LFNB	Long-life Filter
UTY-XWZXZG	External Connect Kit
UTY-XCSX	External Input and Output PCB
UTZ-GXNA	External Input and Output PCB Bracket
UTY-TFSXJ4	WLAN Adapter
UTY-VMSX	Modbus Converter
UTY-VKSX	KNX Converter
UTY-TTRXZ1	Thermostat Converter
UTY-VTGX	Network Converter
UTY-VTGXV	Network Converter (AC power supply)
UTY-TERX	External Switch Controller

Due to continuous product improvements, specifications are subject to change without notice. Please log in to the Fujitsu Portal for the most up-to-date documentation
<https://connect.fujitsugeneral.com>

Effective Date: 05/07/2024

Fujitsu General America, Inc. • 342 Changebridge Rd, Pine Brook, NJ 07058 • Toll Free: (888) 888-3424 • www.fujitsugeneral.com

Inverter Driven Heat Pump

30,000 BTU Single Zone Mid Static Duct System

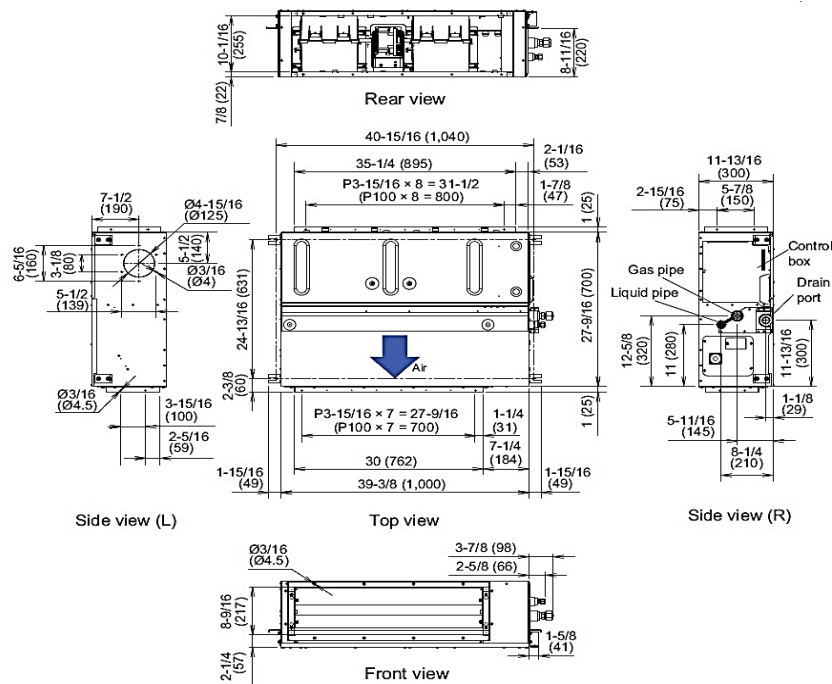
FAN DATA				
Indoor Unit Airflow rate	Cooling	HIGH	CFM (m3/h)	1,001 (1,700)
		MED		800 (1,360)
		LOW		700 (1,190)
		QUIET		630 (1,070)
	Heating	HIGH		1,001 (1,700)
		MED		800 (1,360)
		LOW		700 (1,190)
		QUIET		630 (1,070)
Outdoor Unit Airflow rate	Cooling			2,301 (3,910)
	Heating			2,219 (3,770)
SOUND PRESSURE				
Indoor Unit	Cooling	HIGH	dB (A)	38
		MED		34
		LOW		30
		QUIET		29
	Heating	HIGH		38
		MED		34
		LOW		30
		QUIET		29
Outdoor Unit	Cooling			53
	Heating			55
REFRIGERANT				
Type				R410A
Charge	lb oz			5 lb 8 oz
	g			2500
Oil Type				POE (RB68)

ELECTRICAL SPECIFICATIONS				
Voltage/Frequency		208/230 V~ 60 Hz		
Available Voltage Range		187–253 V		
Current	Cooling	Rated	A	12.8
	Heating	Rated		11.1
Maximum Operating Current		Cooling		18.3
		Heating		18.3
Starting current		13.4		
MCA		22.2		
Maximum Circuit Breaker		25		
Input Power	Cooling	Rated	kW	2.88
		Min.–Max.		0.46–3.67
	Heating	Rated		2.51
		Min.–Max.		0.68–3.81
Power Factor	Cooling	%		97.8
	Heating			98.3
OTHER				
Moisture Removal		pints/h (L/h)	6.3 (3.0)	
Energy Star		No		
Drain hose	Material	PVC		
	Tip diameter	in (mm)	Ø1/2 (Ø13.0) (I.D.) Ø5/8 to Ø11/16 (Ø16.0 to Ø16.7)	
Operation Range	Cooling	°F (°C)	64 to 90 (18 to 32)	
		%RH	80 or less	
	Heating	°F (°C)	60 to 86 (16 to 30)	
Static Pressure Range		inWG (Pa)	0.12 to 0.80 (30 to 200)	

DIMENSIONS:

Indoor Unit

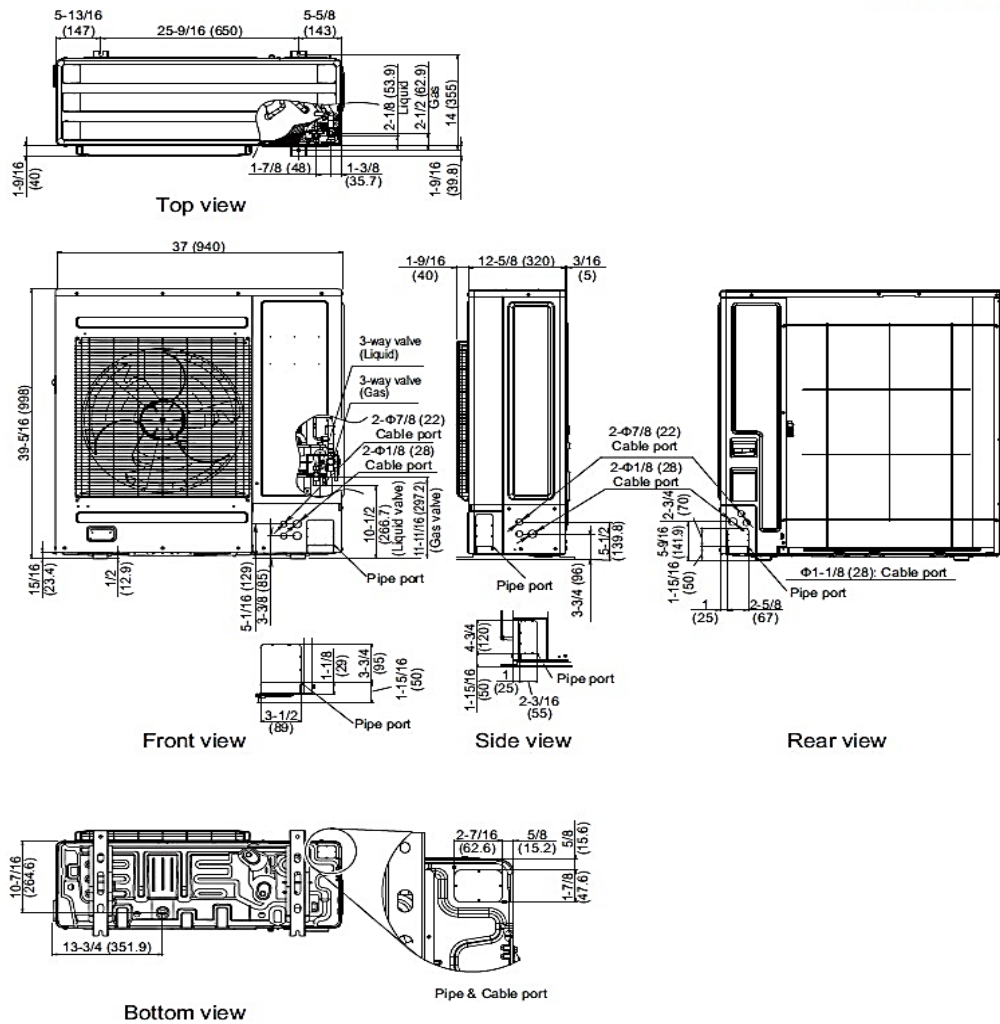
Units: In. (mm)



DIMENSIONS

Units: In. (mm)

Outdoor Unit



The Fujitsu logo is a worldwide trademark of Fujitsu General Limited. The Airstage logo and name is a worldwide trademark of Fujitsu General Limited and is a registered trademark in Japan, the USA and other countries or areas. Copyright 2024 Fujitsu General America, Inc. Fujitsu's products are subject to continuous improvements. Fujitsu reserves the right to modify product design, specifications and information in this brochure without notice and without incurring any obligations.

Note: Specifications are based on the following conditions:
Cooling: Indoor temperature of 80°F (26.7°C) DB/67°F (19.4°C) WB, and outdoor temperature of 95°F (35°C) DB/75°F (23.9°C) WB. Heating: Indoor temperature of 70°F (21.1°C) DB/60°F (15.6°C) WB, and outdoor temperature of 47°F (8.3°C) DB/43°F (6.1°C) WB. Pipe length: 25ft. (7.5m), Height difference: 0ft. (0m) (Outdoor unit – indoor unit).