

Inverter Driven Heat Pump

36,000 BTU Single Zone Mid Static Duct System

Job Name _____
Location _____
Engineer _____
Submitted To _____
Submitted By _____
Reference _____

Date _____
Approval _____
Construction _____
Unit No _____
Drawing No _____

PRODUCT FEATURES

- Up To 0.8" WC
- Quiet Operation (as low as 26 db)
- Automatic Static Pressure Detection
- Heating Operation Rated Down to -5 °F
- Built-in Drain Pump
- Lineset Length up to 164ft
- Controls Sold Separately



MODEL NUMBERS

Indoor Unit	ARUH36LUAS
Outdoor Unit	AOUH36LUAS1
System	36LUAS1R

EFFICIENCIES

SEER			--
SEER 2			18
EER			--
EER 2			9.6
HSPF			--
HSPF 2 (IV) / HSPF 2 (V)			9.8/7.9
COP	kW/kW		--
COP	Btu/hW		--
COP2	kW/kW		3.44
COP2	Btu/hW		11.7

OUTDOOR TEMPERATURE OPERATION RANGE

Cooling	*F(°C)	-5 to 115 (-21 to 46)
Heating*		*-5 to 75 (-21 to 24)

CAPACITIES

Cooling	Rated	Btu/h	36000
	Min.—Max.		9,600—39,000
Heating	Rated	Btu/h	38000
	Min.—Max.		9,200—43,000

LINESET REQUIREMENTS

Connection Method		Flare
Liquid	in (mm)	Ø3/8 (Ø9.52)
Gas		Ø5/8 (Ø15.88)
Pre-charge length		66 (20)
Minimum Length	ft (m)	16 (5)
Max. length		164 (50)
Max. height difference		98 (30)

INDOOR DIMENSIONS & WEIGHT

Net (H x W x D)	in (mm)	11-13/16 x 55-1/8 x 27-9/16 (300 x 1,400 x 700)
Gross (H x W x D)		15-3/4 x 64-1/2 x 34-7/16 (400 x 1,638 x 875)
Net Weight	lb (kg)	121 (55)
Gross Weight		141 (64)

OUTDOOR DIMENSIONS & WEIGHT

Net (H x W x D)	in (mm)	39-5/16 x 37 x 12-5/8 (998 x 940 x 320)
Gross (H x W x D)		46-5/16 x 40-7/16 x 17-1/2 (1,176 x 1,027 x 445)
Net Weight	lb (kg)	139 (63)
Gross Weight		159 (72)

* System continues to operate below rated outdoor operation temperature range, subject to varying conditions. System has no low temperature cut out. Capacity is not tested outside of the rated temperature range.

Warranty Information



7 Year Compressor, 5 Year Parts out-of-the-box Warranty



10 Year Compressor, 10 Year Parts Warranty when registered within 60 days of installation in a residence



12 Year Compressor, 12 Year Parts Warranty when registered within 60 days of installation in a residence, and installed by a Fujitsu Elite contractor

ACCESSORIES

UTY-RNRUZ- Series	Wired Remote Controller
UTY-RSRY	Simple Remote Controller
UTY-RHRY	Simple Remote Controller
UTY-LBTUM	IR Receiver Kit with Wireless Remote Controller
UTY-XSZXZ1	Remote Sensor Unit
UTD-LFNA	Long-life Filter
UTY-XWZXZG	External Connect Kit
UTY-XCSX	External Input and Output PCB
UTZ-GXNA	External Input and Output PCB Bracket
UTY-TFSXJ4	WLAN Adapter
UTY-VMSX	Modbus Converter
UTY-VKSX	KNX Convertor
UTY-TTRXZ1	Thermostat Converter
UTY-VTGX	Network Converter
UTY-VTGXV	Network Converter (AC power supply)
UTY-TERX	External Switch Controller

Effective Date: 05/07/2024

Due to continuous product improvements, specifications are subject to change without notice. Please log in to the Fujitsu Portal for the most up-to-date documentation
<https://connect.fujitsugeneral.com>

Fujitsu General America, Inc. • 342 Changebridge Rd, Pine Brook, NJ 07058 • Toll Free: (888) 888-3424 • www.fujitsugeneral.com

Inverter Driven Heat Pump

36,000 BTU Single Zone Mid Static Duct System

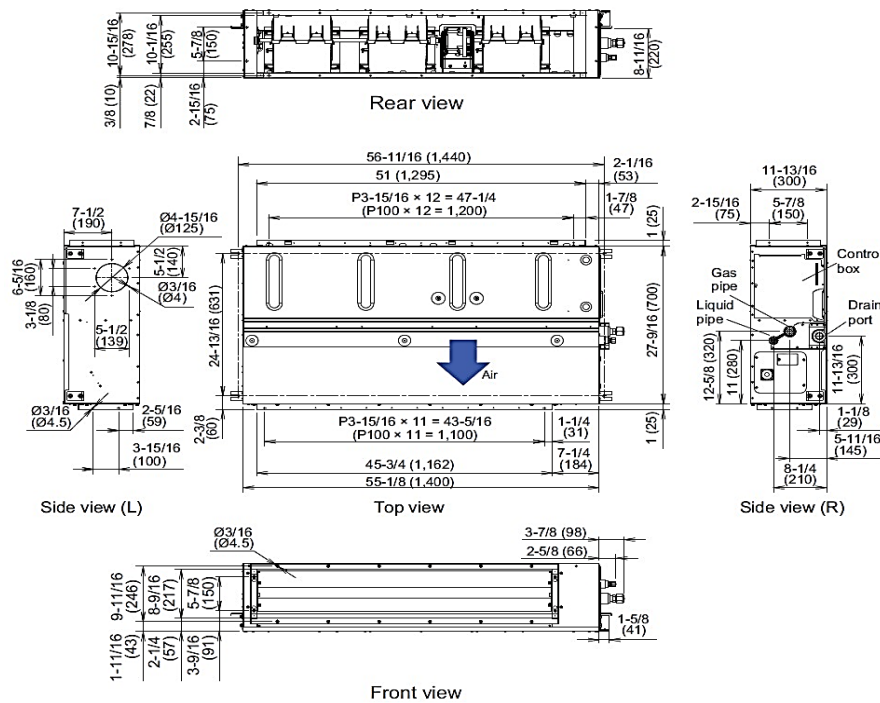
FAN DATA				
Indoor Unit Airflow rate	Cooling	HIGH	CFM (m3/h)	1,207 (2,050)
		MED		965 (1,640)
		LOW		783 (1,330)
		QUIET		630 (1,070)
	Heating	HIGH		1,089 (1,850)
		MED		965 (1,640)
		LOW		783 (1,330)
		QUIET		630 (1,070)
Outdoor Unit Airflow rate	Cooling		2,502 (4,250)	
	Heating		2,431 (4,130)	
SOUND PRESSURE				
Indoor Unit	Cooling	HIGH	dB (A)	37
		MED		33
		LOW		30
		QUIET		26
	Heating	HIGH		35
		MED		33
		LOW		30
		QUIET		26
Outdoor Unit	Cooling		54	
	Heating		56	
REFRIGERANT				
Type				R410A
Charge	lb oz	5 lb 8 oz		
	g	2500		
Oil Type				POE (RB68)

ELECTRICAL SPECIFICATIONS				
Voltage/Frequency		208/230 V~ 60 Hz		
Available Voltage Range		187–253 V		
Current	Cooling	Rated	A	16.5
	Heating	Rated		14.2
Maximum Operating Current		Cooling		19.8
		Heating		19.8
Starting current				16.5
MCA				22.2
Maximum Circuit Breaker				25
Input Power	Cooling	Rated	kW	3.75
		Min.–Max.		0.44–4.27
	Heating	Rated		3.24
		Min.–Max.		0.65–4.12
Power Factor	Cooling		%	98.8
	Heating			99.2
OTHER				
Moisture Removal		pints/h (L/h)	7.6 (3.6)	
Energy Star			No	
Drain hose	Material		PVC	
	Tip diameter	in (mm)	Ø1/2 (Ø13.0) (I.D.) Ø5/8 to Ø11/16 (Ø16.0 to Ø16.7)	
Operation Range	Cooling	°F (°C)	64 to 90 (18 to 32)	
		%RH	80 or less	
	Heating	°F (°C)	60 to 86 (16 to 30)	
		inWG (Pa)	0.12 to 0.80 (30 to 200)	

DIMENSIONS:

Indoor Unit

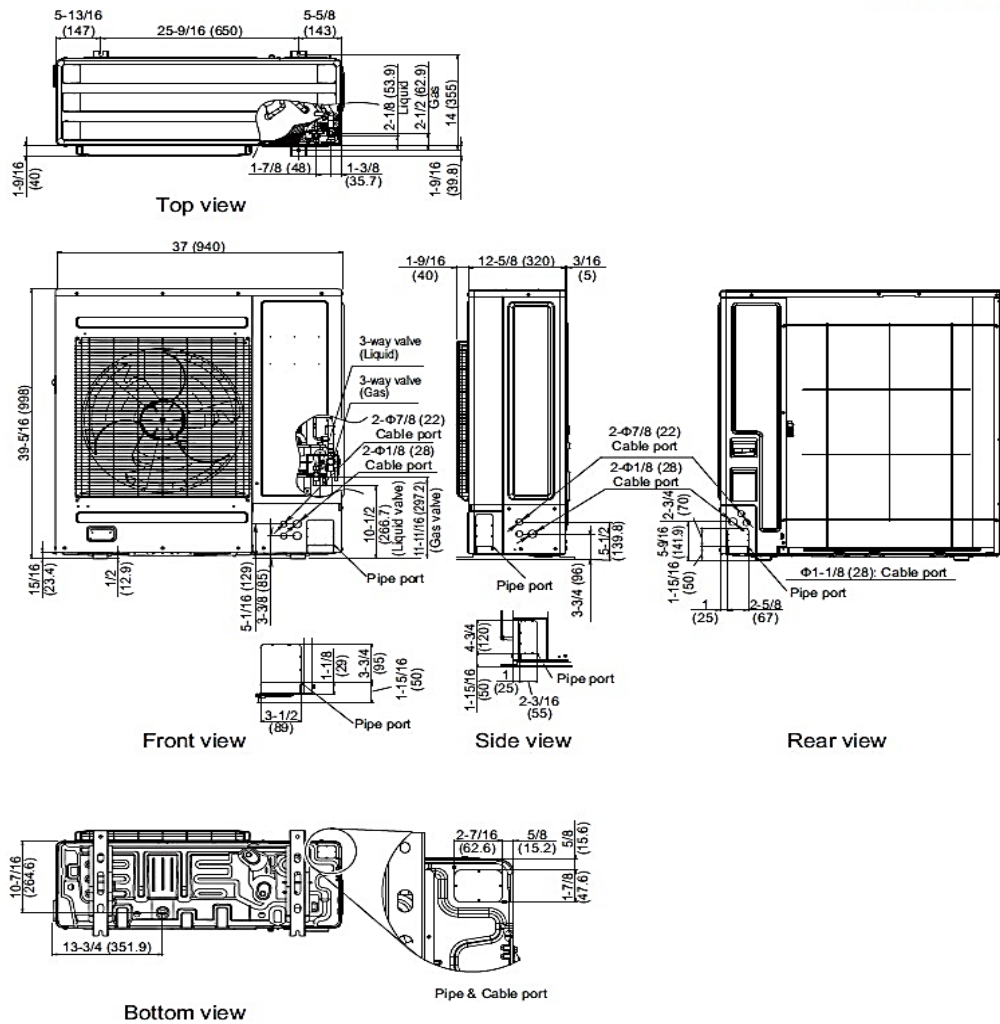
Units: In. (mm)



DIMENSIONS

Units: In. (mm)

Outdoor Unit



The Fujitsu logo is a worldwide trademark of Fujitsu General Limited. The Airstage logo and name is a worldwide trademark of Fujitsu General Limited and is a registered trademark in Japan, the USA and other countries or areas. Copyright 2024 Fujitsu General America, Inc. Fujitsu's products are subject to continuous improvements. Fujitsu reserves the right to modify product design, specifications and information in this brochure without notice and without incurring any obligations.

Note: Specifications are based on the following conditions:
Cooling: Indoor temperature of 80°F (26.7°C) DB/67°F (19.4°C) WB, and outdoor temperature of 95°F (35°C) DB/75°F (23.9°C) WB. Heating: Indoor temperature of 70°F (21.1°C) DB/60°F (15.6°C) WB, and outdoor temperature of 47°F (8.3°C) DB/43°F (6.1°C) WB. Pipe length: 25ft. (7.5m), Height difference: 0ft. (0m) (Outdoor unit – indoor unit).